

Rohn State LD04-62-1HN

TVD
2":100'

Company: Noble Energy Inc
Well Name: Rohn State LD04-62-1HN
UWI or LSD: 05-123-37460
Rig Id: H&P 273
State: Colorado
County/Parish: Weld
Country: USA
Survey Company: Ensign Directional
Job number:
Dir. Driller Days Kody Wood
Dir. Driller Nights Mike David
MWD/LWD Days Nathan McClain
MWD/LWD Nights Ryan Prue

Log measurements:
Depth measured from:
Maximum temperature:

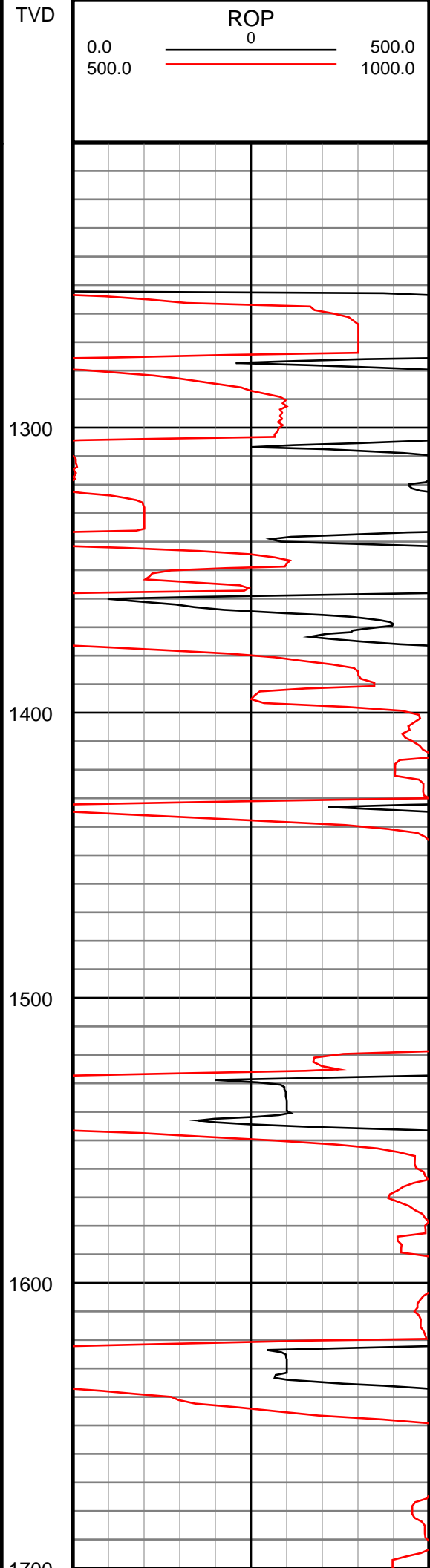
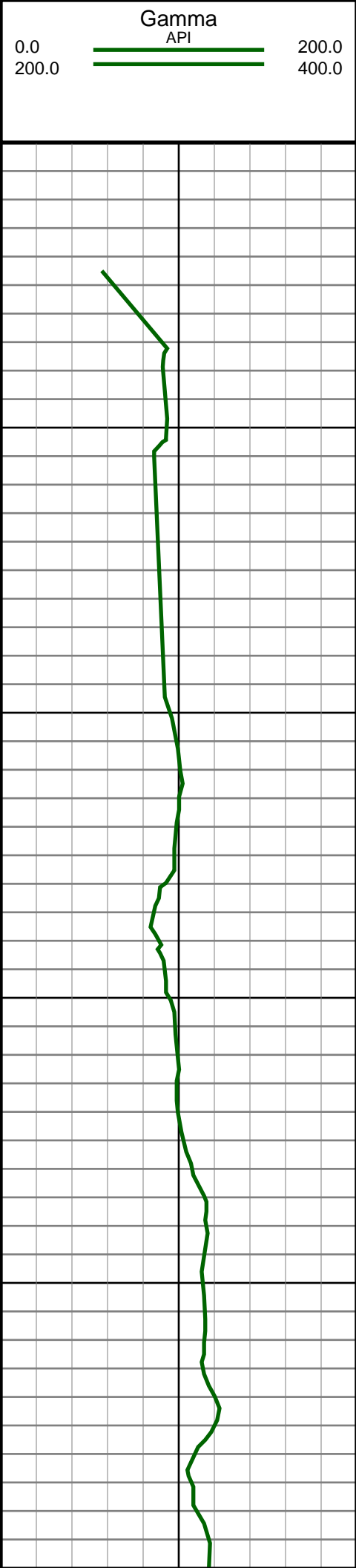
Depth **Date**
Start: 1245 ft 9/16/2013
End: 9541 ft 9/20/2013

Casing Depth Size
Surface: 1212 9.625
Intermediate: 6056 7.0

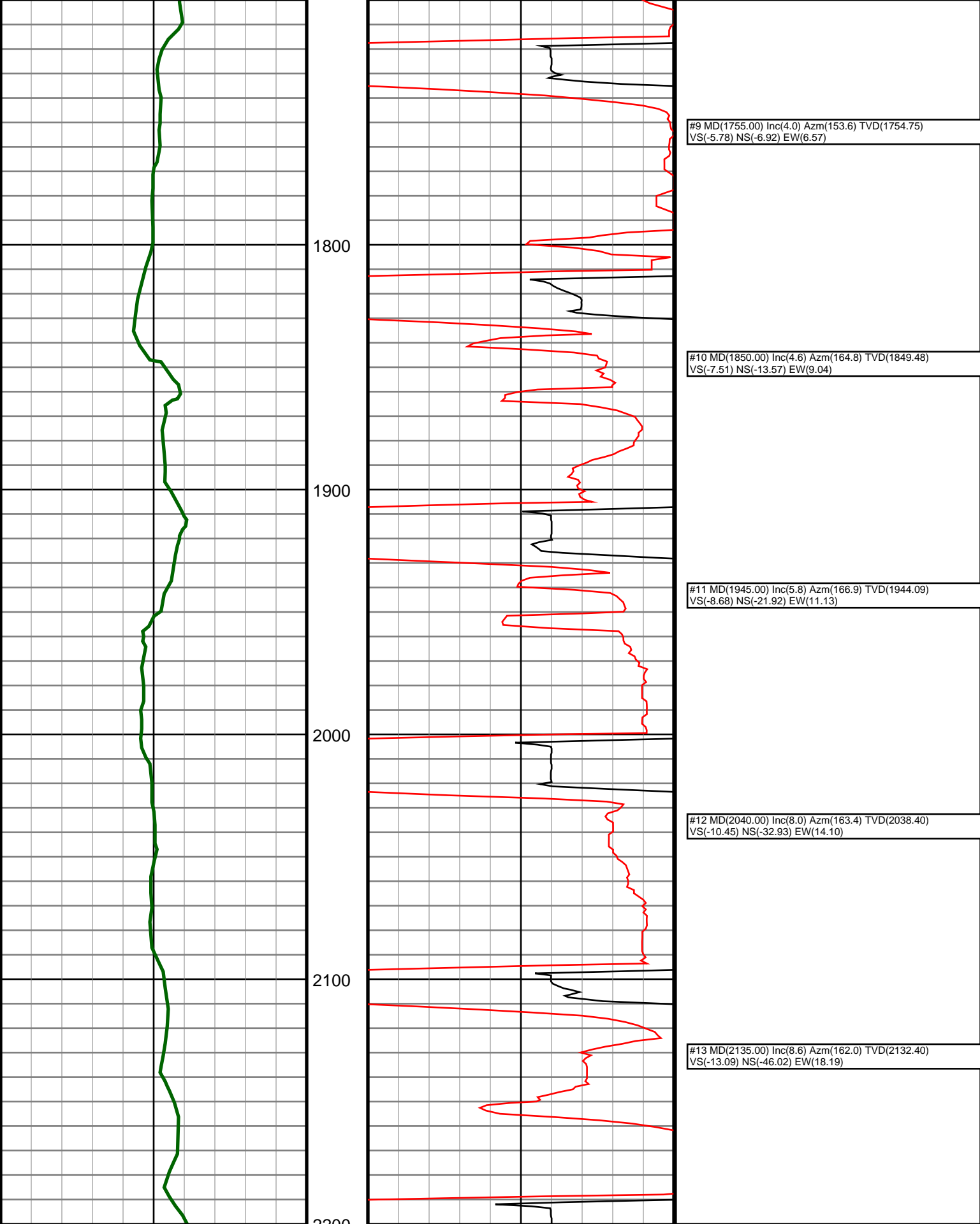
Mud Type:
Density:
Viscosity:
Rm: **Rmf:** **Rmc:**

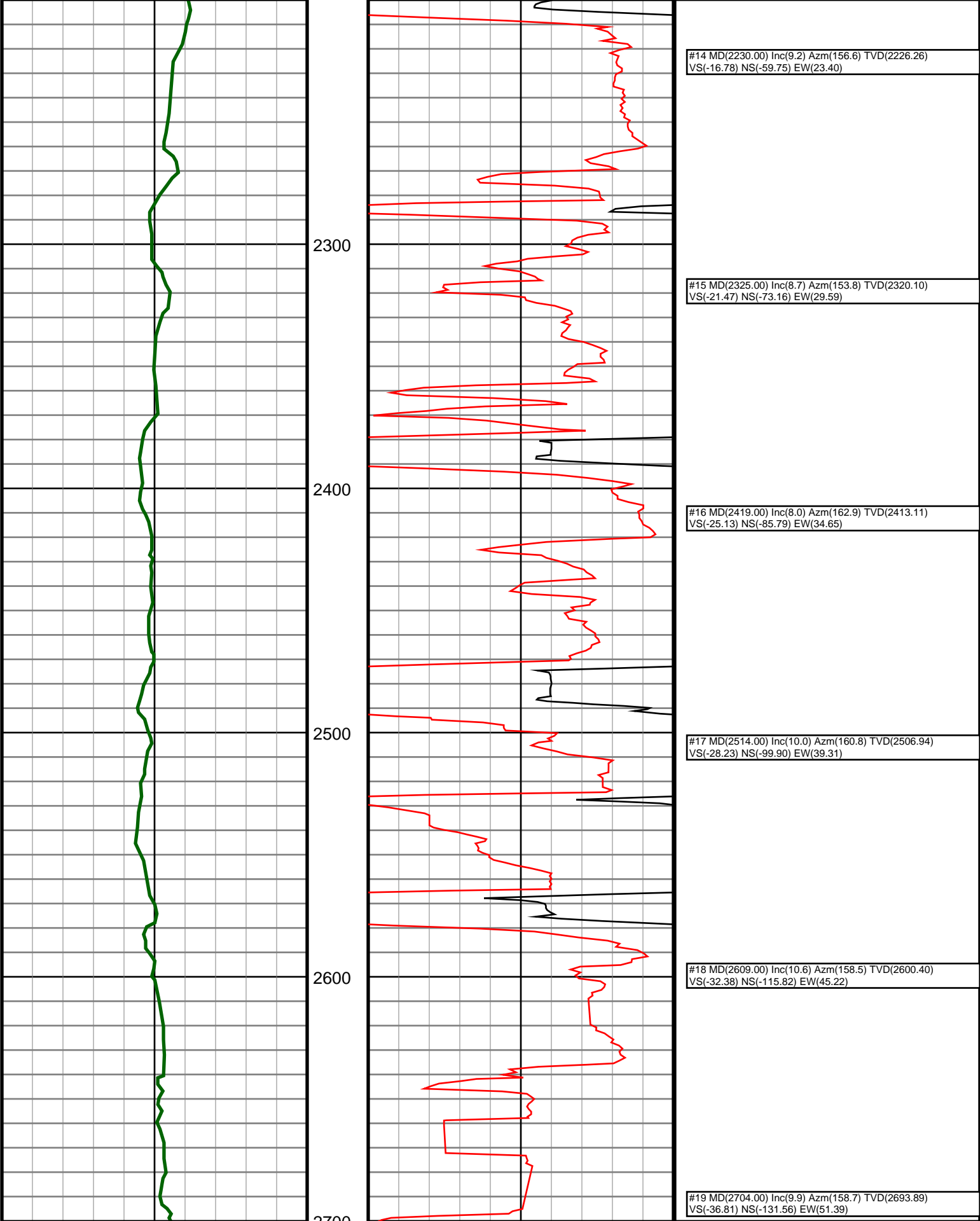
Elevations
KB: 4736
GL: 4712
DF: 4736

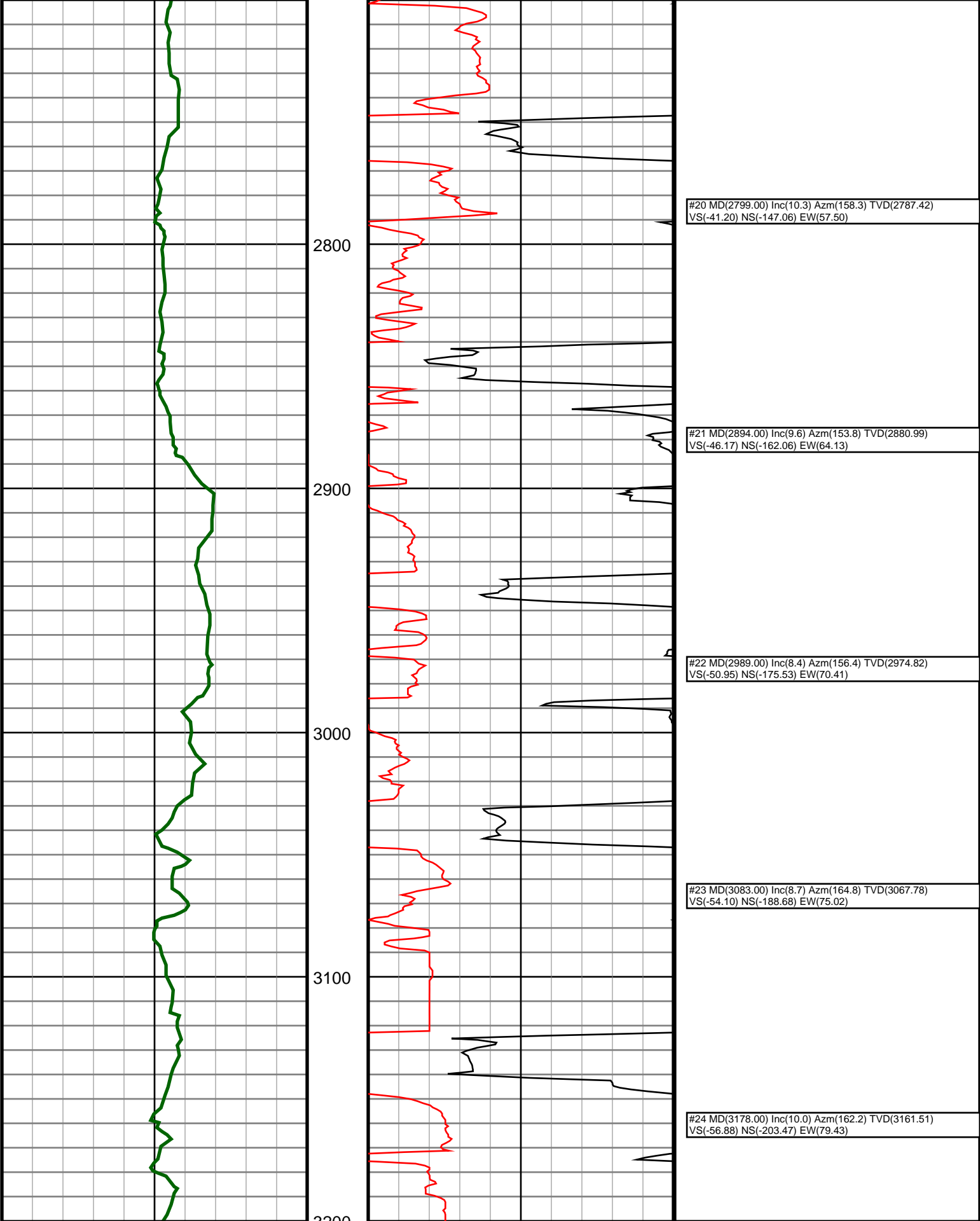
Run	Bit Size	Offsets Gamma Survey	Start	Depths End	Start	Dates End
1	8.75	57.41	52.41	1212	4940	9/16/2013 9/16/2013
2	8.75	61.77	56.77	4940	6067	9/17/2013 9/17/2013
3	6.125	75.30	70.30	6067	9541	9/18/2013 9/20/2013
4						
5						
6						
7						
8						
9						
10						

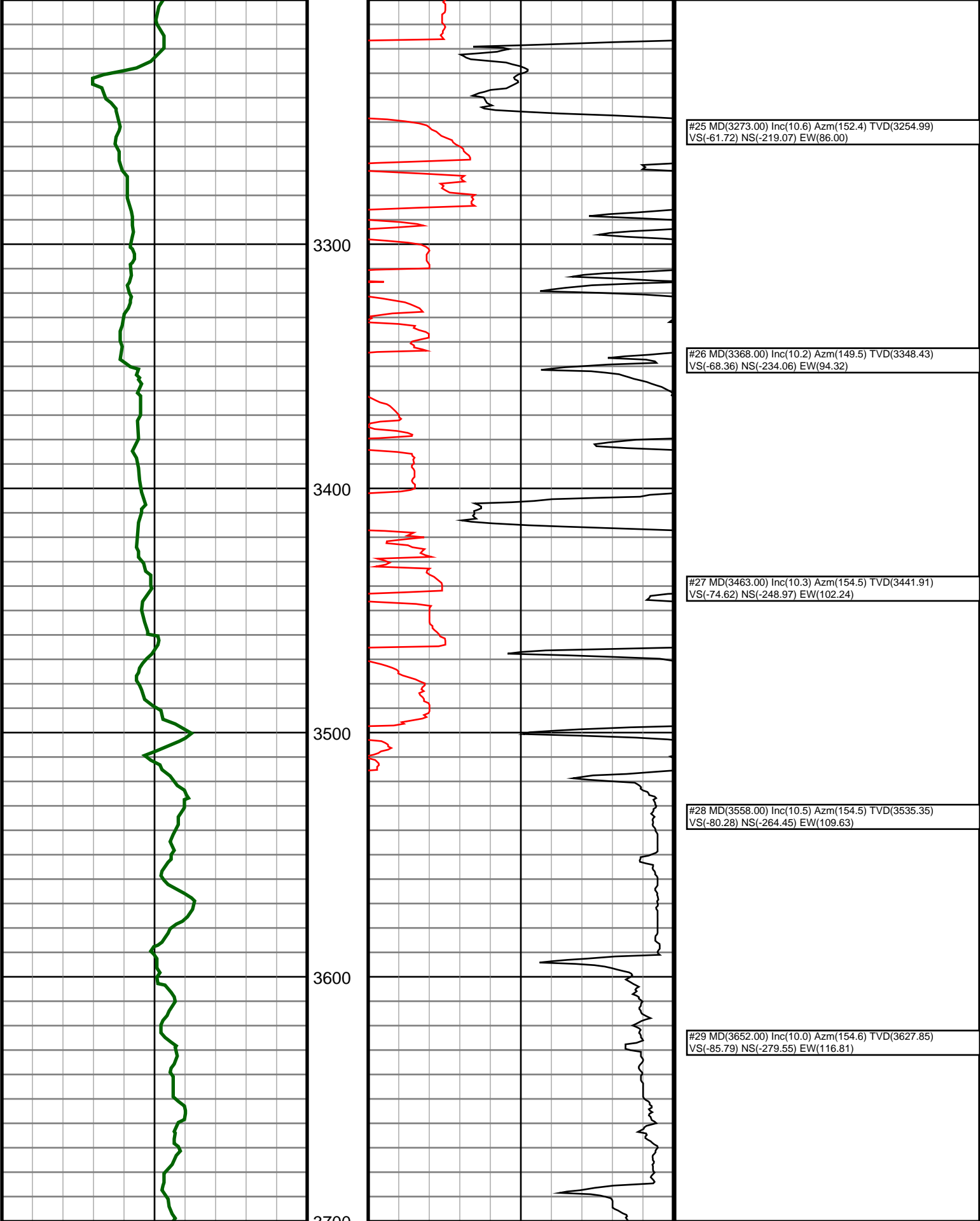


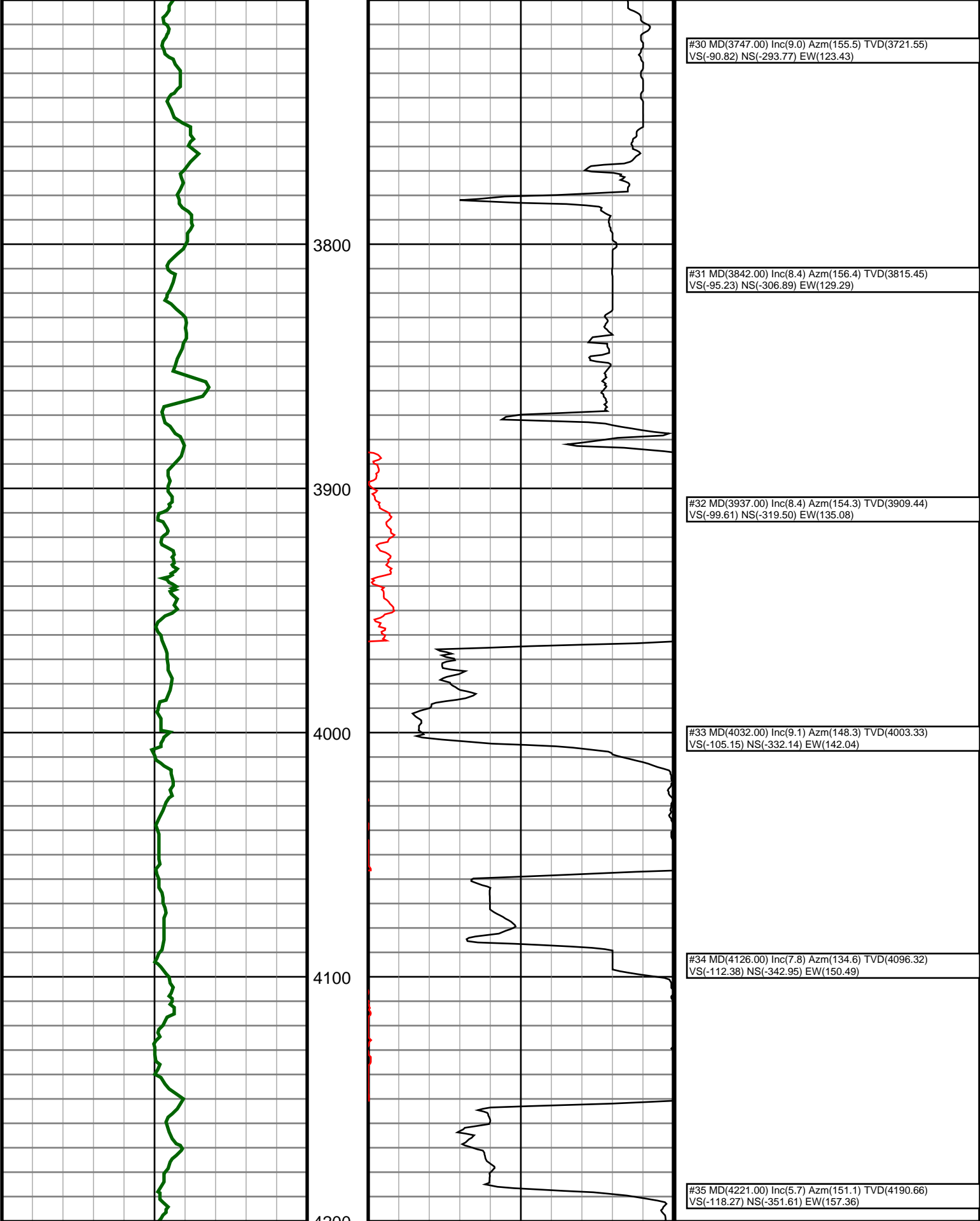
#4 MD(1283.00) Inc(1.3) Azm(53.2) TVD(1282.99) VS(0.77) NS(-1.93) EW(-0.56)
#5 MD(1376.00) Inc(1.1) Azm(49.5) TVD(1375.97) VS(-0.88) NS(-0.71) EW(0.96)
#6 MD(1471.00) Inc(1.0) Azm(29.0) TVD(1470.95) VS(-2.11) NS(0.60) EW(2.06)
#7 MD(1566.00) Inc(1.3) Azm(149.2) TVD(1565.94) VS(-3.04) NS(0.40) EW(3.01)
#8 MD(1661.00) Inc(2.3) Azm(155.9) TVD(1660.89) VS(-4.07) NS(-2.26) EW(4.34)

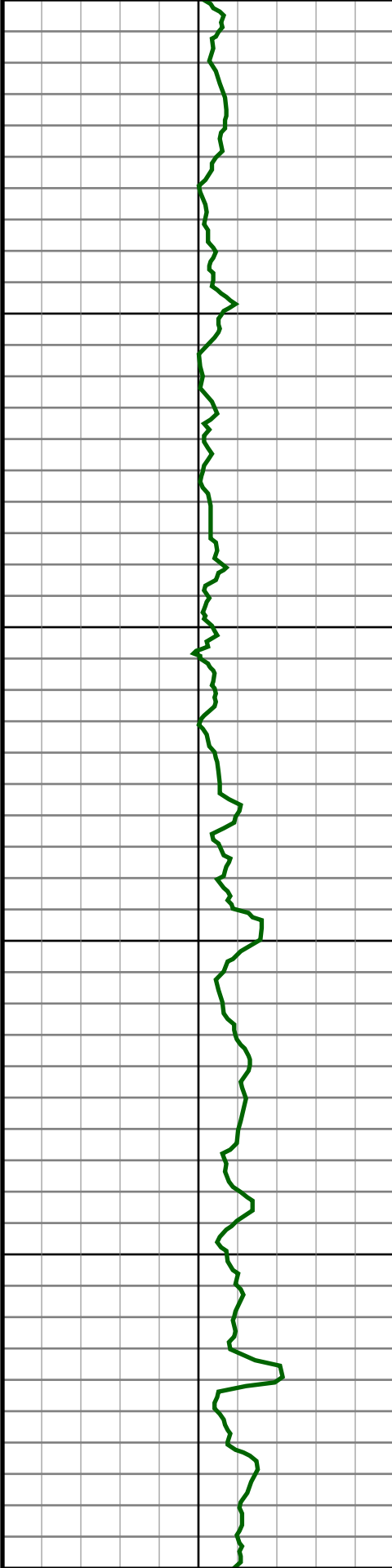












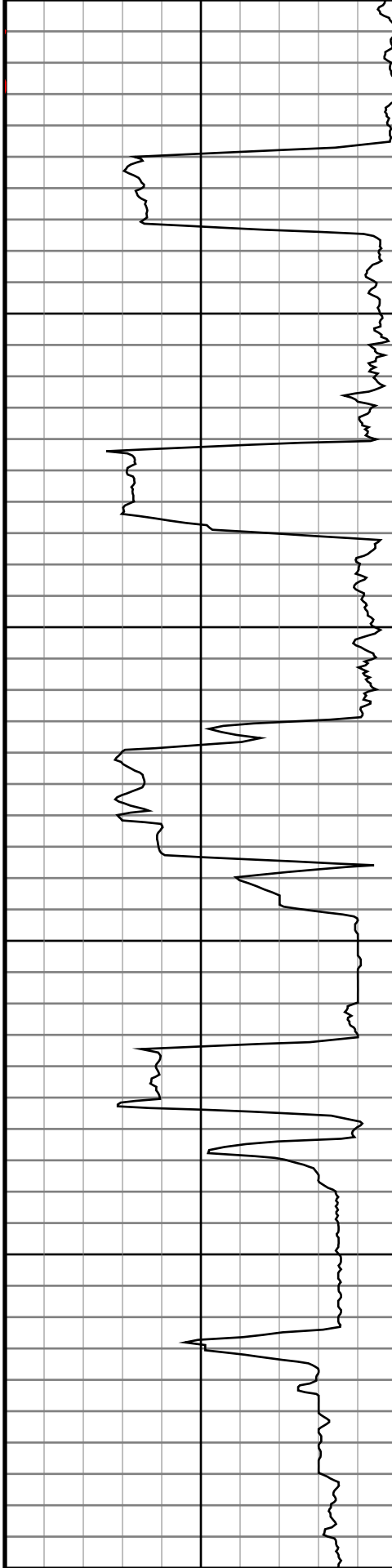
4300

4400

4500

4600

4700



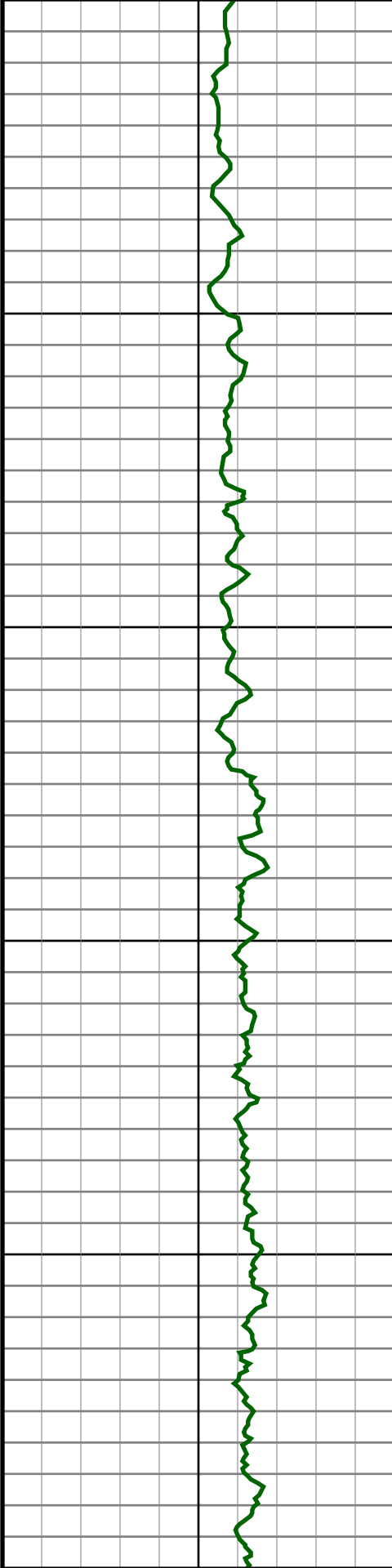
#36 MD(4316.00) Inc(4.7) Azm(159.7) TVD(4285.27)
VS(-121.04) NS(-359.39) EW(160.99)

#37 MD(4411.00) Inc(3.3) Azm(194.7) TVD(4380.05)
VS(-121.01) NS(-365.68) EW(161.64)

#38 MD(4506.00) Inc(2.2) Azm(243.6) TVD(4474.95)
VS(-118.32) NS(-369.14) EW(159.32)

#39 MD(4601.00) Inc(1.6) Azm(277.7) TVD(4569.90)
VS(-115.32) NS(-369.77) EW(156.37)

#40 MD(4695.00) Inc(1.1) Azm(265.6) TVD(4663.88)
VS(-113.14) NS(-369.66) EW(154.17)



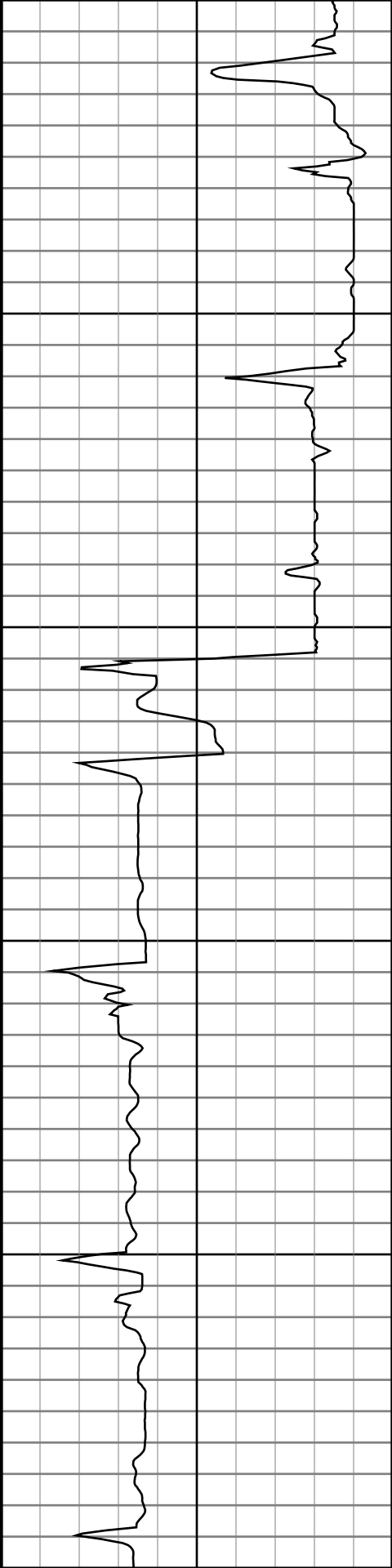
4800

4900

5000

5100

5200



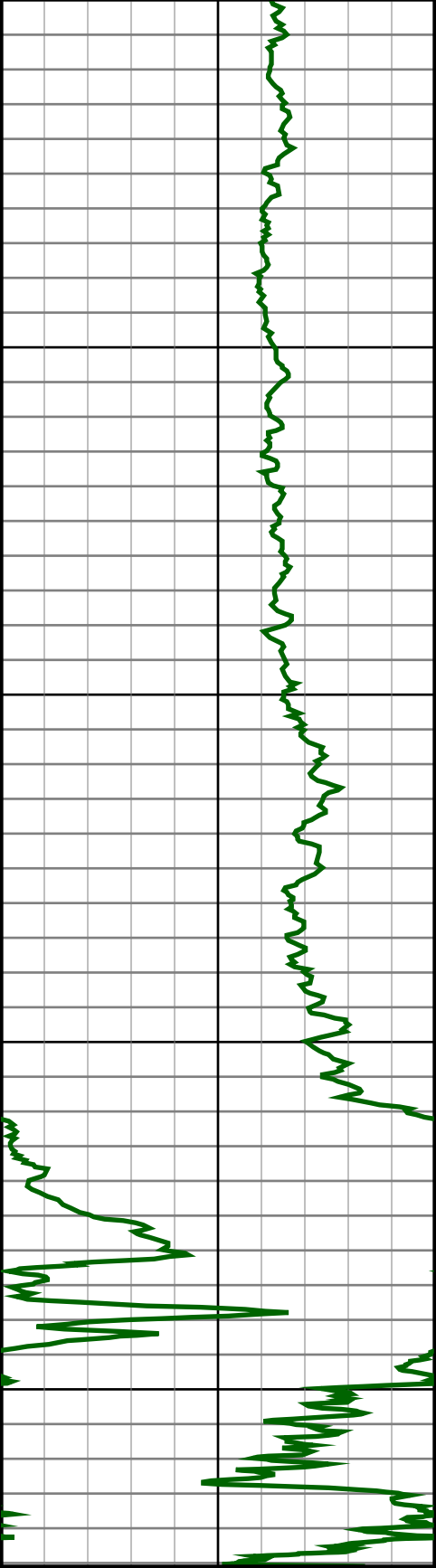
#41 MD(4790.00) Inc(0.4) Azm(247.6) TVD(4758.87)
VS(-111.91) NS(-369.86) EW(152.95)

#42 MD(4885.00) Inc(0.3) Azm(239.2) TVD(4853.87)
VS(-111.37) NS(-370.11) EW(152.43)

#43 MD(4980.00) Inc(2.2) Azm(259.8) TVD(4948.84)
VS(-109.32) NS(-370.57) EW(150.42)

#44 MD(5074.00) Inc(12.5) Azm(264.3) TVD(5041.94)
VS(-97.32) NS(-371.90) EW(138.49)

#45 MD(5169.00) Inc(21.5) Azm(273.5) TVD(5132.71)
VS(-69.82) NS(-371.86) EW(110.83)

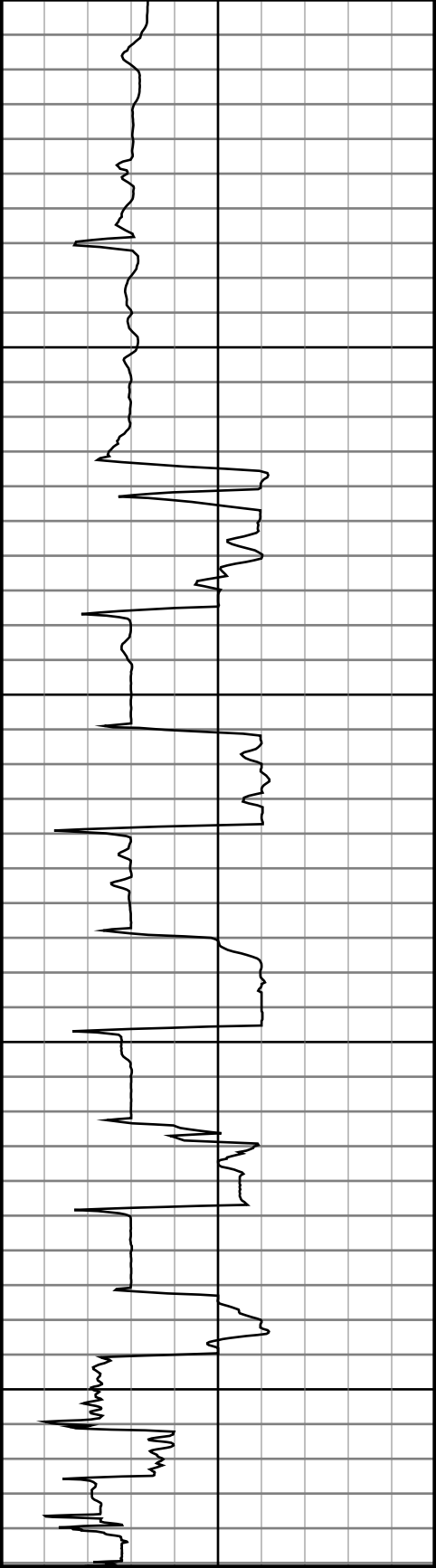


5300

5400

5500

5600



#46 MD(5264.00) Inc(30.2) Azm(272.6) TVD(5218.13)
VS(-28.97) NS(-369.71) EW(69.50)

#47 MD(5359.00) Inc(40.1) Azm(265.2) TVD(5295.74)
VS(25.39) NS(-371.19) EW(14.98)

#48 MD(5453.00) Inc(44.2) Azm(262.7) TVD(5365.42)
VS(88.44) NS(-377.89) EW(-47.72)

#49 MD(5548.00) Inc(49.2) Azm(264.5) TVD(5430.56)
VS(157.55) NS(-385.55) EW(-116.40)

#50 MD(5643.00) Inc(54.6) Azm(265.6) TVD(5489.15)
VS(232.26) NS(-391.97) EW(-190.85)

#51 MD(5738.00) Inc(58.0) Azm(267.1) TVD(5541.86)
VS(311.20) NS(-396.98) EW(-269.72)

#52 MD(5833.00) Inc(64.5) Azm(268.2) TVD(5587.53)
VS(394.25) NS(-400.37) EW(-352.89)

6030.0:Data logged through 7" casing from 6012 to 6056

9520.0:Projection @ bit (9541) Inc: 90.0 Azm: 269.7
TVD: 5633.27 VS: 4070.13

0.0 200.0
Gamma API 200.0 400.0

0.0 500.0
ROP 0 500.0 1000.0