



LOG created using L PLOT VH Version 3.0, September 09, 2013, Copyright (C) 1999-2009 Pason Systems Corp.

OPERATOR: NOBLE ENERGY INC
WELL: ROHN STATE LD04-62HN
LOCATION: SEC 4 T9N R58W
COUNTY: WELD
STATE: COLORADO
SPOT: 737' FSL; 480' FEL
ELEVATION: 4711' GL; 4735' KB
FIELD: WILDCAT
SPUD DATE: 09/07/2013
TD DATE:
DATES LOGGED: 09/08/2013 -
DEPTHS LOGGED: 1200' - ____' MD
LOGGERS: LAURA KELLOGG; CONOR PESICKA
DRILLING FLUID: LSND
DRILLING RIG: H&P 273
API: 05-123-37461
LOG TYPE: VERTICAL
SCALE: 1:240 (5 inches per 100 feet)
REMARKS: WELLSITE GEOLOGICAL SERVICES
PROVIDED BY COLUMBINE LOGGING INC.

LITHOLOGIES



Sandstone



Shaly Sandstone



Silty Shale

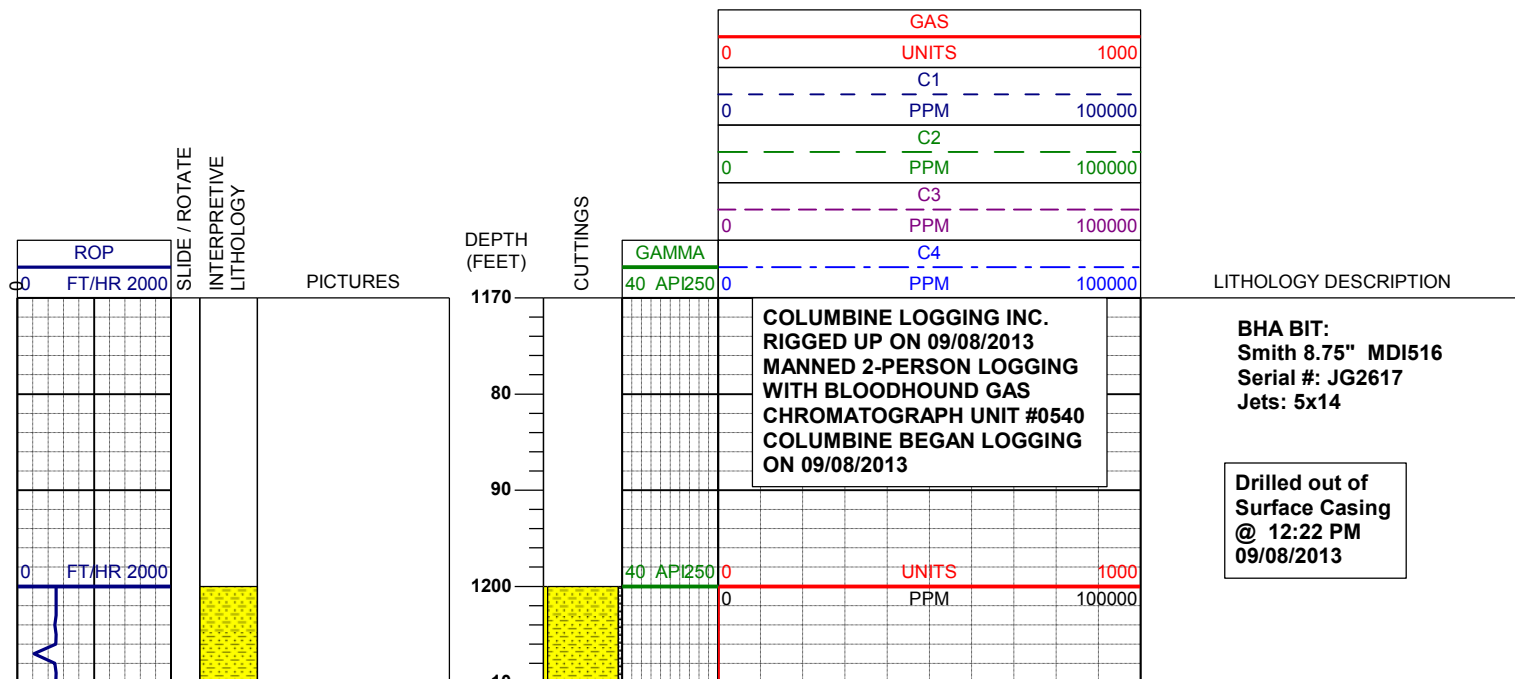
ENGINEERING SYMBOLS

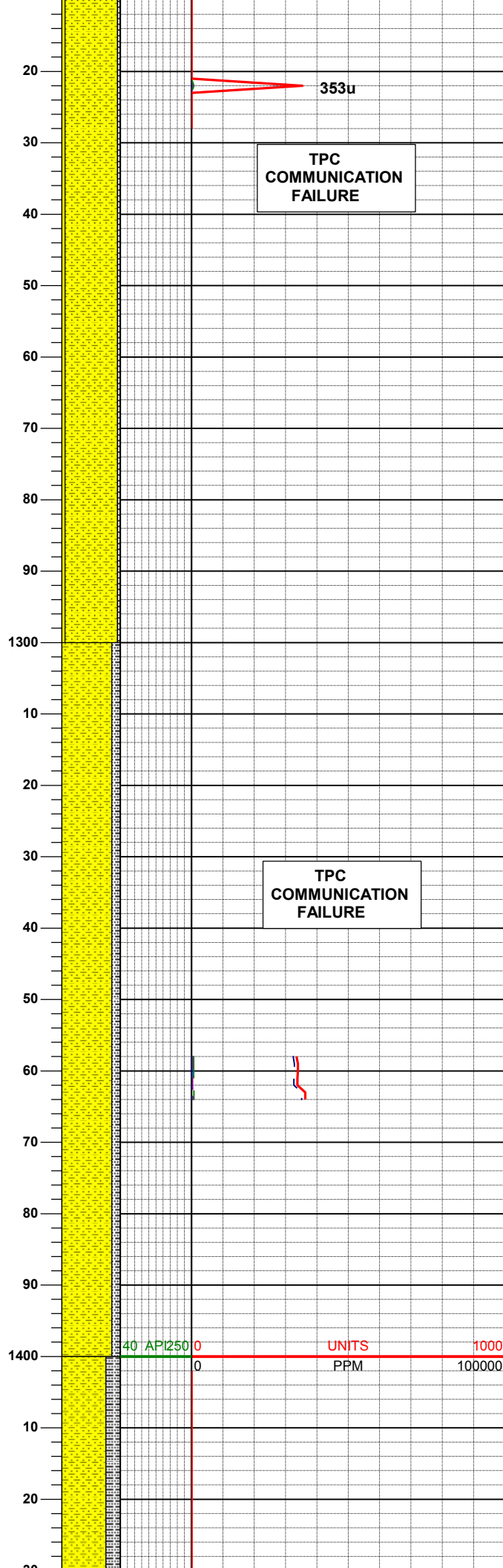
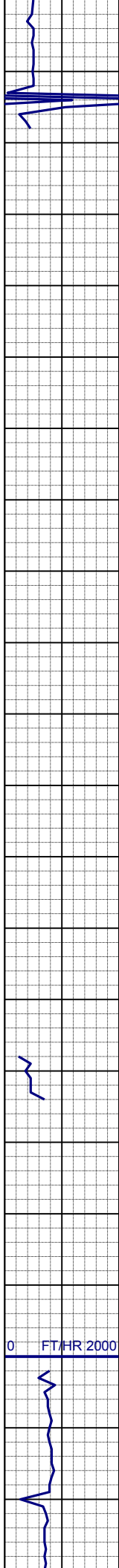


Connection



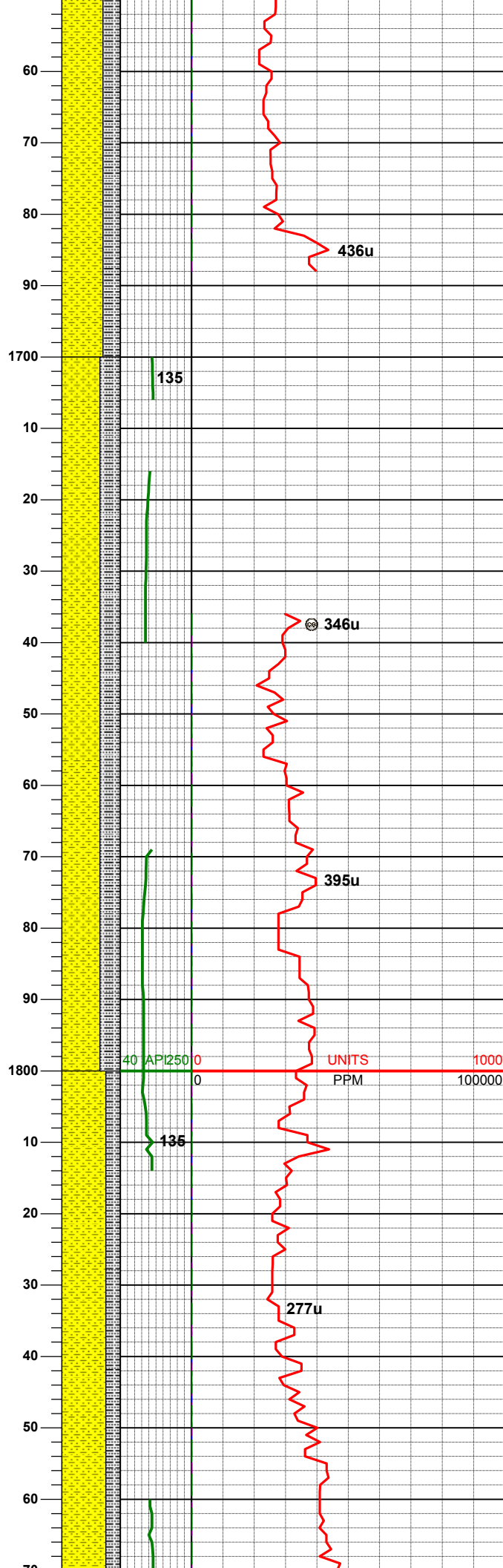
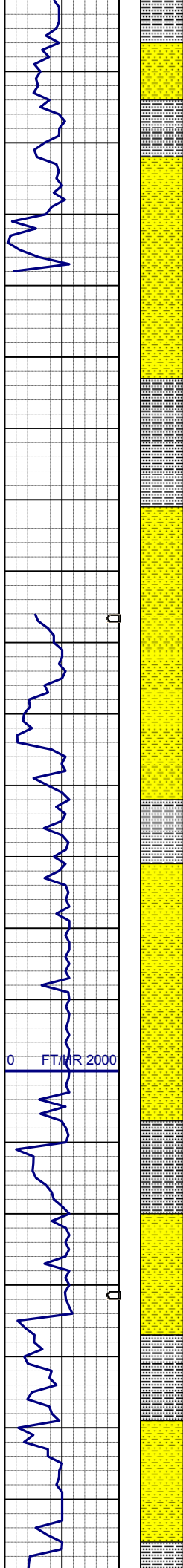
Connection Gas





SHYSS: ltgy-gy, s&p ip, sbang, v fri, vfgr, psrt, wrndd, abnt cly, arg cmt
SS: ltgy-gy-trnsl, sbang-ang, fgr, psrt, wrndd, arg cmt, tr lit frag
SLTYSH: ltgy-gy, sbblky-sbply, sft, gt-sdy tex, arg cmt

SHYSS: ltgy-gy, s&p ip, sbang, v fri, vfgr, psrt, wrndd, abnt cly, arg cmt
SLTYSH: ltgy-gy, sbblky-sbply, sft, gt-sdy tex, arg cmt

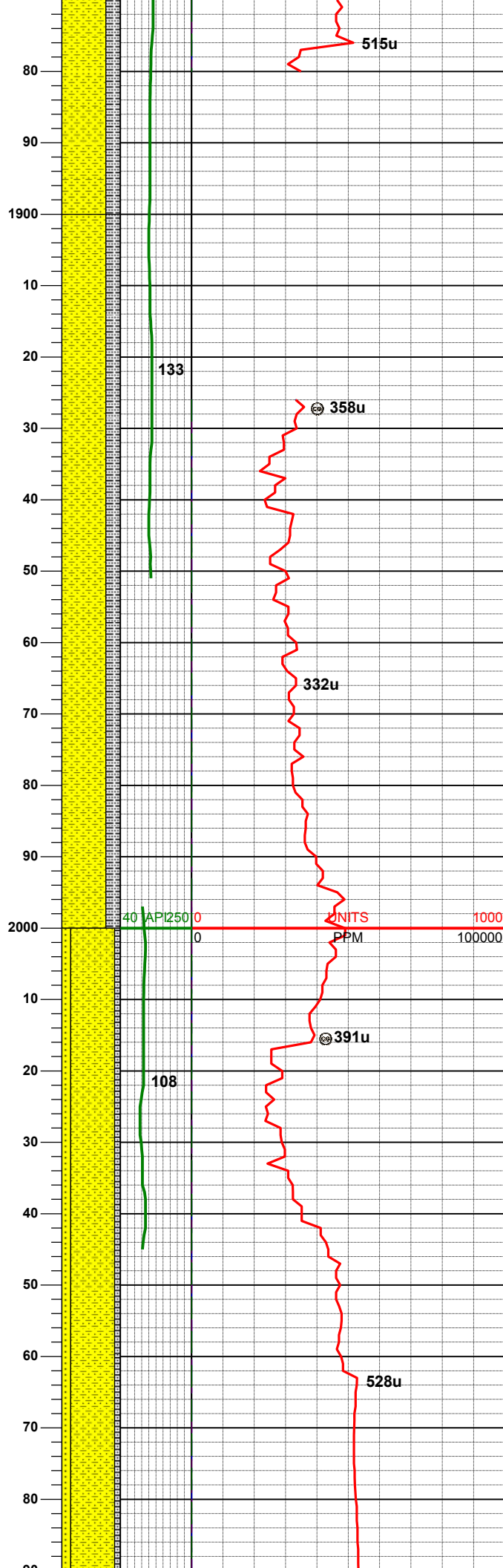
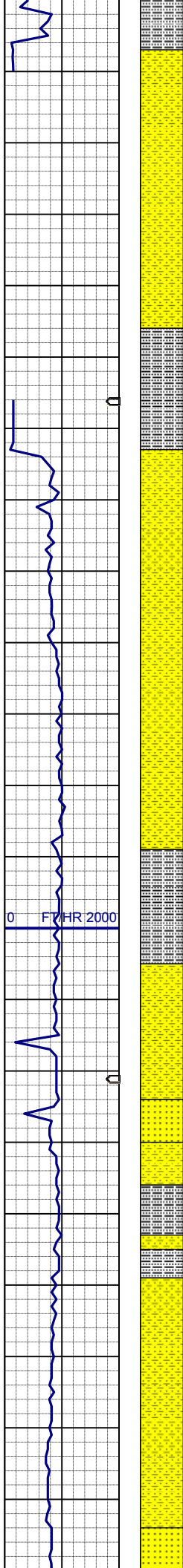


SLTYSH: ltgy-gy, sbblky-sbply, sft, gt
-sdy tex, arg cmt

SHYSS: ltgy-gy, s&p ip, sbang, v fri,
vfgr, psrt, wrnnd, abnt cly, arg cmt
SLTYSH: ltgy-gy, sbblky-sbply, sft, gt
-sdy tex, arg cmt

SHYSS: ltgy-gy, s&p ip, sbang, v fri,
vfgr, psrt, wrnnd, abnt cly, arg cmt
SLTYSH: ltgy-gy, sbblky-sbply, sft, gt
-sdy tex, arg cmt

MD	1865'
INC	1.1°
AZM	328.7°

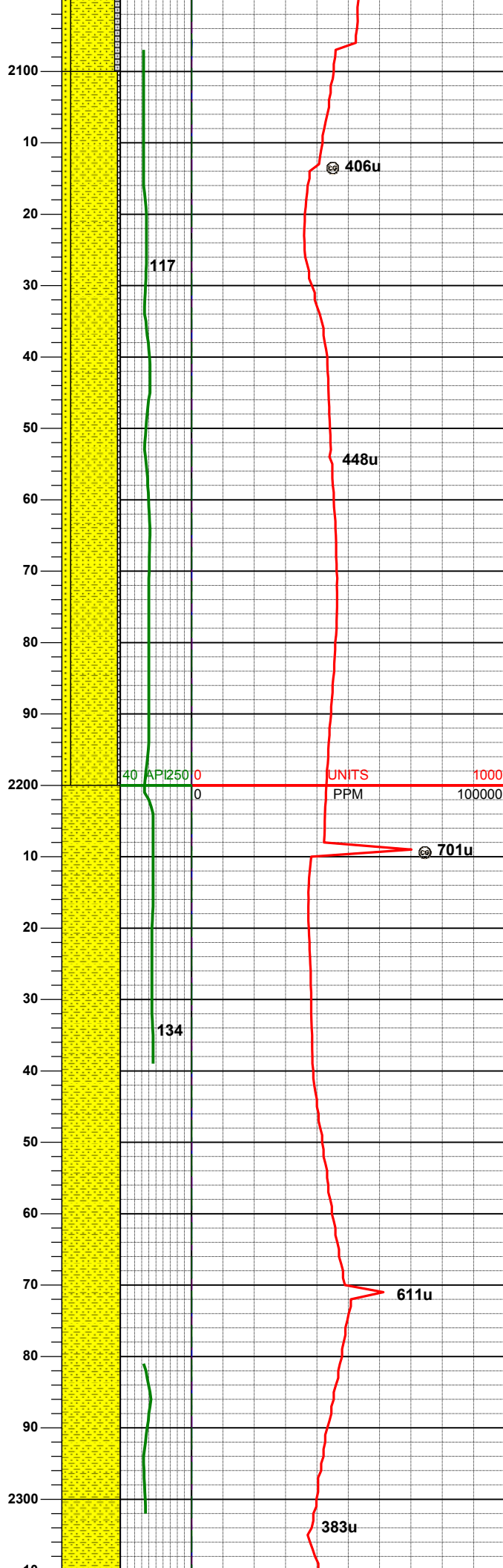
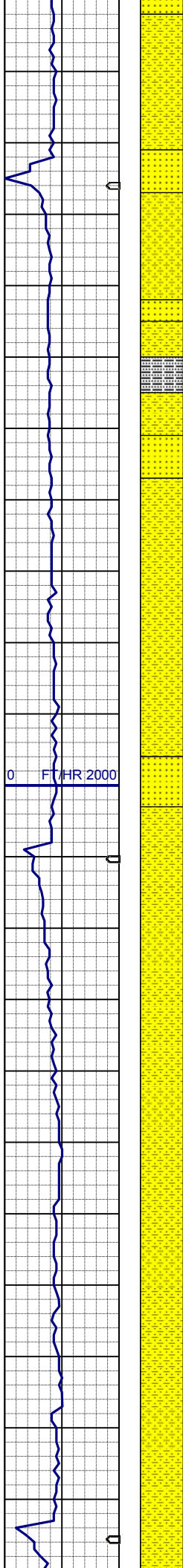


TVD 1864.87'

WT IN 8.50/ OUT 8.70
VIS IN 28/ OUT 28

SHYSS: ltgy-gy, s&p ip, sbang, v fri,
vfgr, psrt, wrndd, abnt cly, arg cmt
SLTYSH: ltgy-gy, sbblky-sbply, sft, gt
-sdy tex, arg cmt

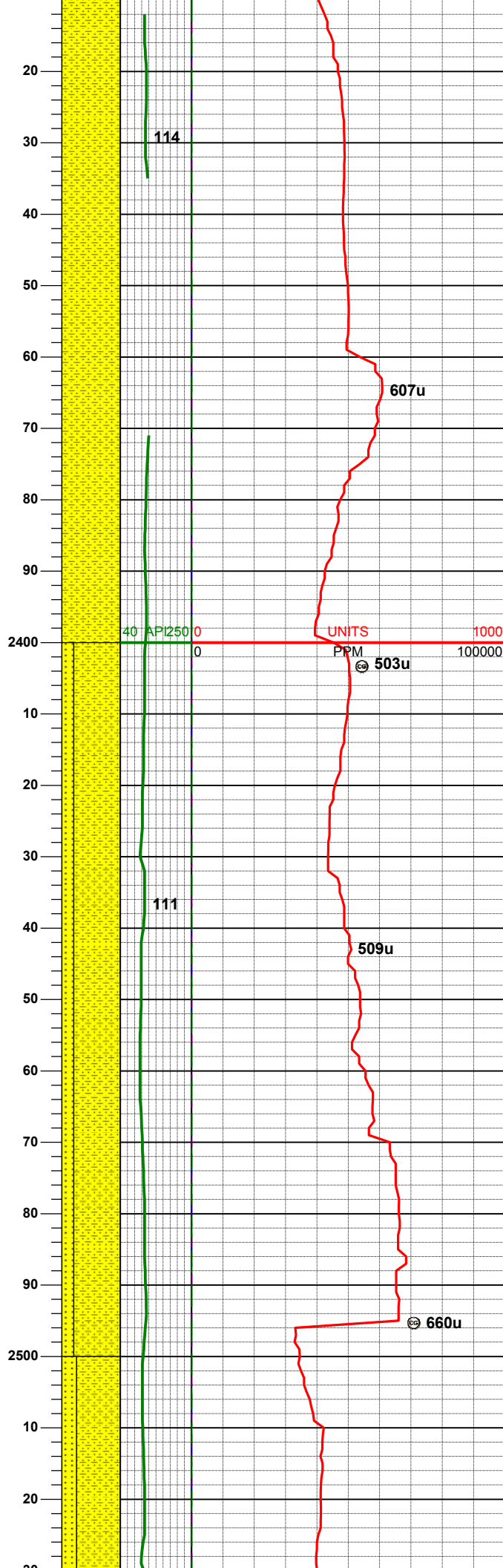
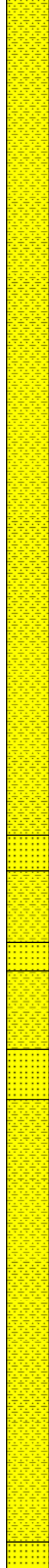
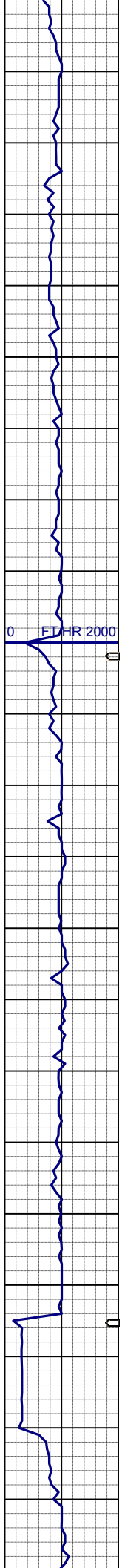
SHYSS: ltgy-gy, s&p ip, sbang, v fri,
vfgr, psrt, wrndd, abnt cly, arg cmt
SS: ltgy-gy-trnsl, sbang-ang, fgr, psrt,
wrndd, arg cmt, tr lit frag
SLTYSH: ltgy-gy, sbblky-sbply, sft, gt
-sdy tex, arg cmt



MD	2149'
INC	0.8°
AZM	241.0°
TVD	2148.85'

SHYSS: ltgy-gy, s&p ip, sbang, v fri, vfgr, psrt, wrndd, abnt cly, arg cmt
SS: ltgy-gy-trnsl, sbang-ang, fgr, psrt, wrndd, arg cmt, tr lit frag
SLTYSH: ltgy-gy, sbblky-sbply, sft, gt-sdy tex, arg cmt

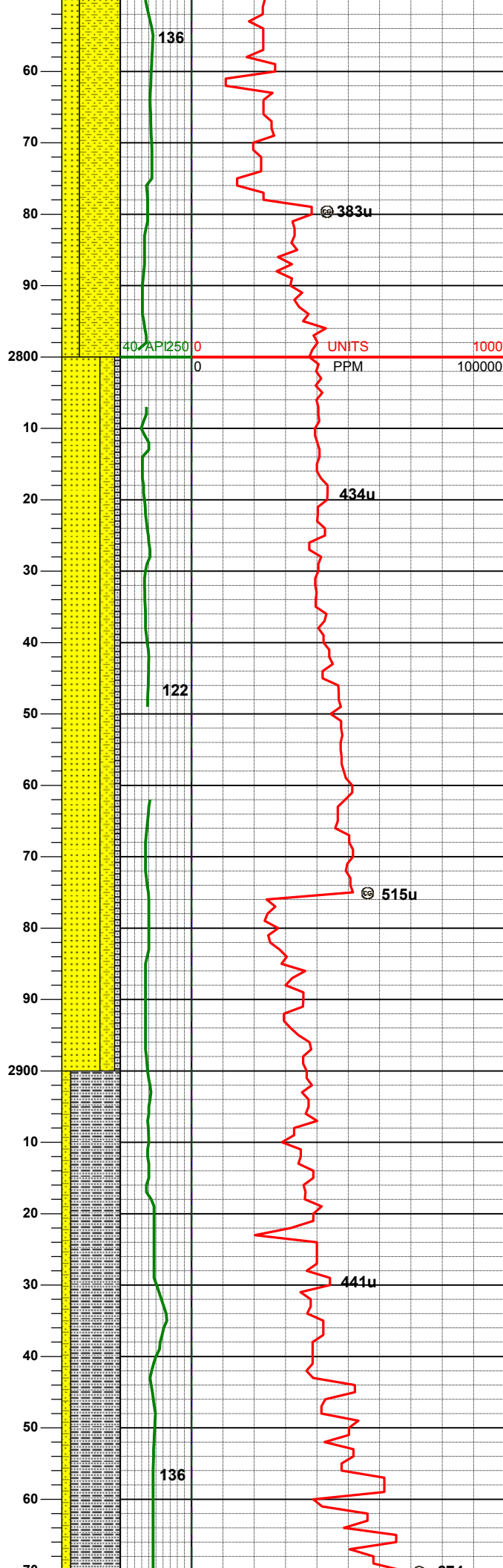
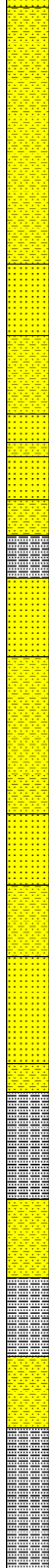
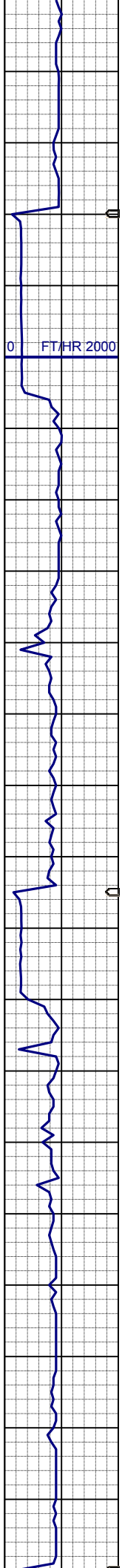
SHYSS: ltgy-gy, s&p ip, sbang, v fri, vfgr, psrt, wrndd, abnt cly, arg cmt



SHYSS: ltgy-gy, s&p ip, sbang, v fri,
vfgr, psrt, wrndd, abnt cly, arg cmt

MD	2434'
INC	0.7°
AZM	244.3°
TVD	2433.82'

SHYSS: ltgy-gy, s&p ip, sbang, v fri,
vfgr, psrt, wrndd, abnt cly, arg cmt
SS: ltgy-gy-trnsl, sbang-ang, fgr, psrt,
wrndd, arg cmt, tr lit frag, tr glau



SS: ltgy-gy-trnsl, sbang-ang, fgr, psrt, wrnnd, arg cmt, tr lit frag, tr glau

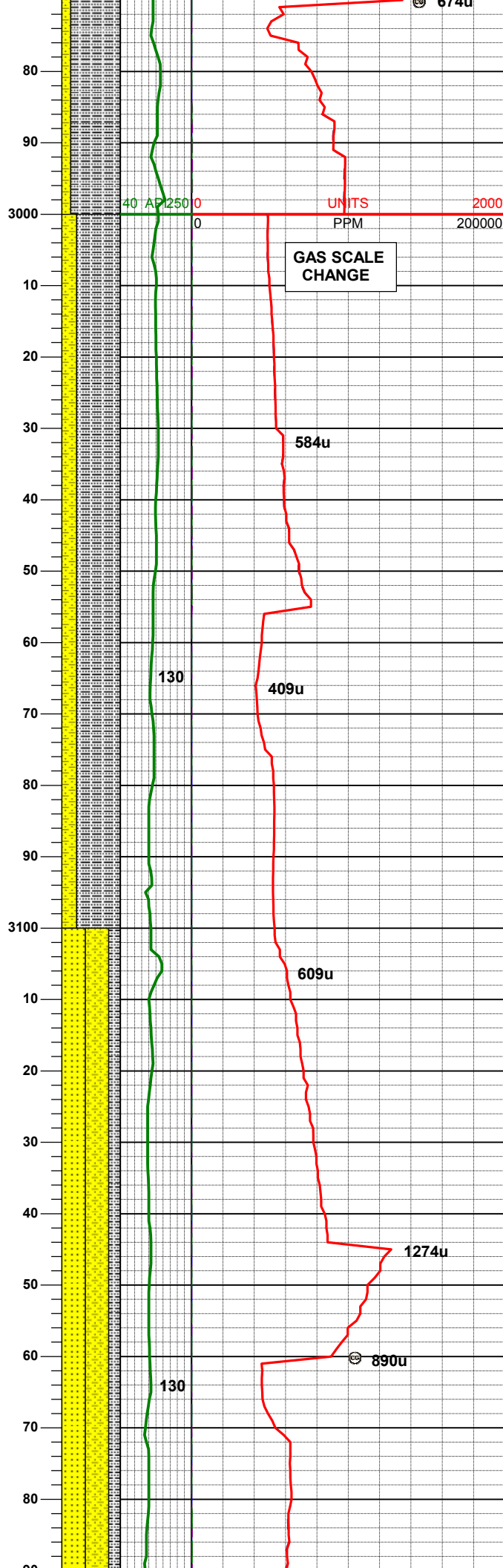
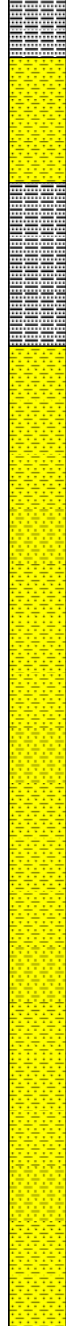
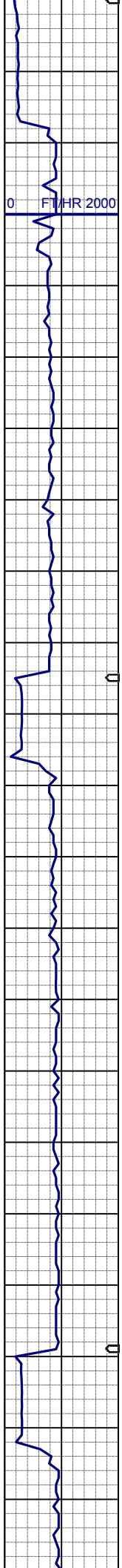
WT IN 8.90/ OUT 9.00
VIS IN 29/ OUT 29

MD 2813'
INC 4.8°
AZM 120.4°
TVD 2812.13'

SS: ltgy-gy-trnsl, sbang-ang, fgr, psrt, wrnnd, arg cmt, tr lit frag, tr glau
SHYSS: ltgy-gy, s&p ip, sbang, v fri, vfgr, psrt, wrnnd, abnt cly, arg cmt
SLTYSH: ltgy-gy, sbblky-sbply, sft, arg cmt

MD 2908'
INC 5.2°
AZM 127.8°
TVD 2906.77'

SLTYSH: ltgy-gy, sbblky-sbply, sft, arg cmt
SHYSS: ltgy-gy, s&p ip, sbang, v fri, vfgr, psrt, wrnnd, abnt cly, arg cmt



MD 3003'
INC 6.2°
AZM 139.1°
TVD 3001.30'

SLTYSH: ltgy-gy, sbbiky-sbply, sft, arg cmt
SHYSS: ltgy-gy, s&p ip, sbang, v fri, vfgr, psrt, wrndd, abnt cly, arg cmt

MD 3098'
INC 5.9°
AZM 127.5°
TVD 3095.78'

WT IN 9.00/ OUT 9.00
VIS IN 28/ OUT 28

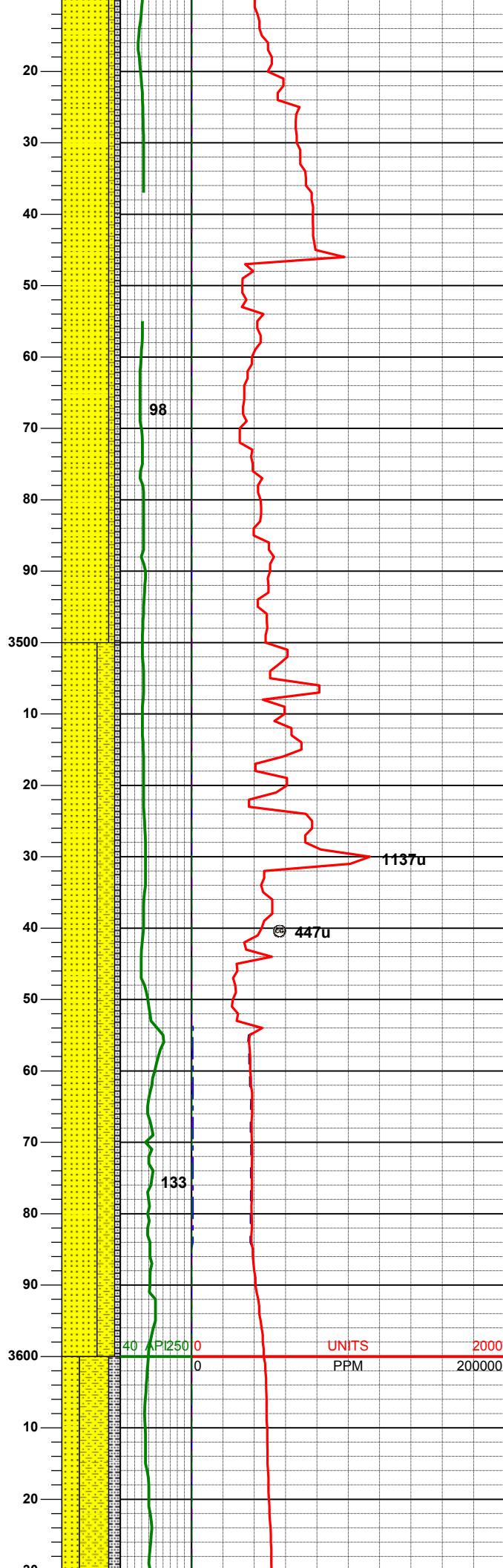
SS: wh-gy-trnsl, sbang-ang, fgr, psrt, wrndd, arg cmt, tr lit frag, tr glau
SHYSS: ltgy-gy, s&p ip, sbang, v fri, vfgr, psrt, wrndd, abnt cly, arg cmt
SLTYSH: ltgy-gy, sbbiky-sbply, sft, arg cmt

MD 3193'

The image displays a stratigraphic column plot with depth on the vertical axis (0 to 100 feet) and various parameters on the horizontal axis. The leftmost column is a yellow patterned bar. The next column is a green line labeled '40 API 250' at the top and bottom. The third column is a red line labeled 'UNITS' at the top and bottom, with 'PPM' below it. The rightmost column is a red line labeled '2000' at the top and bottom, with '200000' below it. The plot includes labels for '95', '976u', '641u', and '98'.

MD	3288'
INC	7.9°
AZM	127.3°
TVD	3284.41'

MD	3382'
INC	8.0°
AZM	125.2°
TVD	3377.56'



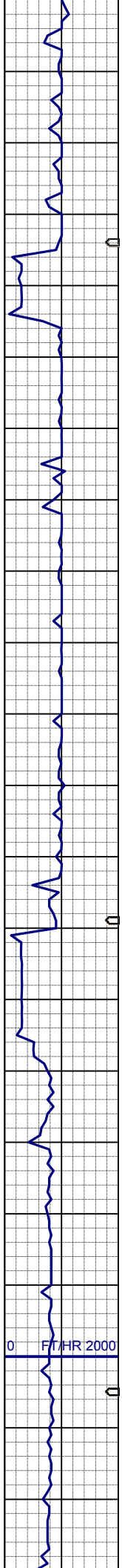
WT IN 8.80+ / OUT 9.30+
VIS IN 29 / OUT 30

SS: wh-gy-trnsl, sbang-ang, fgr, psrt, wrnld, sme uncons, arg cmt, tr lit frag, tr glau
SLTYSH: ltgy-gy, sbblky-sbplty, sft, arg cmt
SHYSS: ltgy-gy, s&p ip, sbang, v fri, vfgr, psrt, wrnld, abnt cly, arg cmt

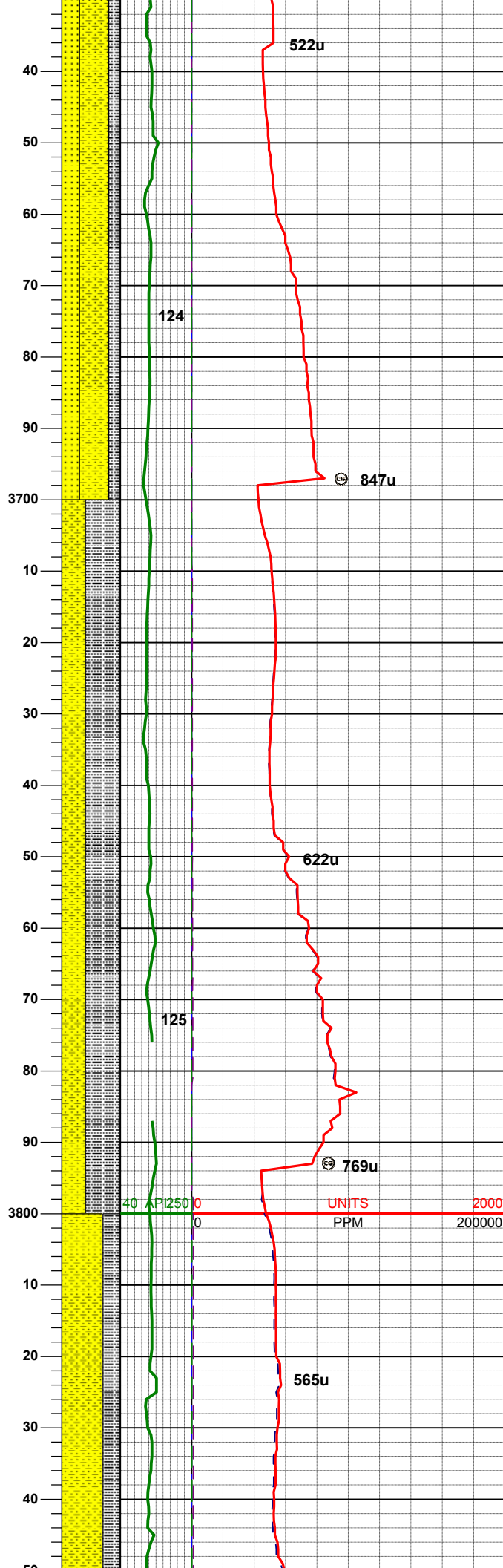
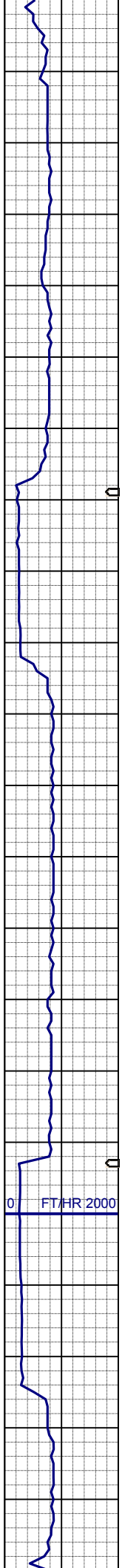
MD	3477'
INC	7.0°
AZM	128.2°
TVD	3471.70'

SS: wh-gy-trnsl, sbang-ang, fgr, psrt, wrnld, sme uncons, arg cmt, tr lit frag, tr glau
SHYSS: ltgy-gy, s&p ip, sbang, v fri, vfgr, psrt, wrnld, abnt cly, arg cmt
SLTYSH: ltgy-gy, sbblky-sbplty, sft, arg cmt

MD	3572'
INC	6.4°
AZM	140.3°
TVD	3566.05'



MD	3628'
----	-------



MD 3633'
INC 5.7°
AZM 129.4°
TVD 3631.69'

SHYSS: ltgy-gy, s&p ip, sbang, v fri,
vfgr, psrt, wrnnd, abnt cly, arg cmt,
abnt glau
SS: wh-gy-trnsl, sbang-ang, fgr, psrt,
wrnnd, sme uncon, arg cmt, tr lit
frag, abnt glau
SLTYSH: ltgy-gy, sbblky-sbplty, sft, gt
-slty tex, arg cmt

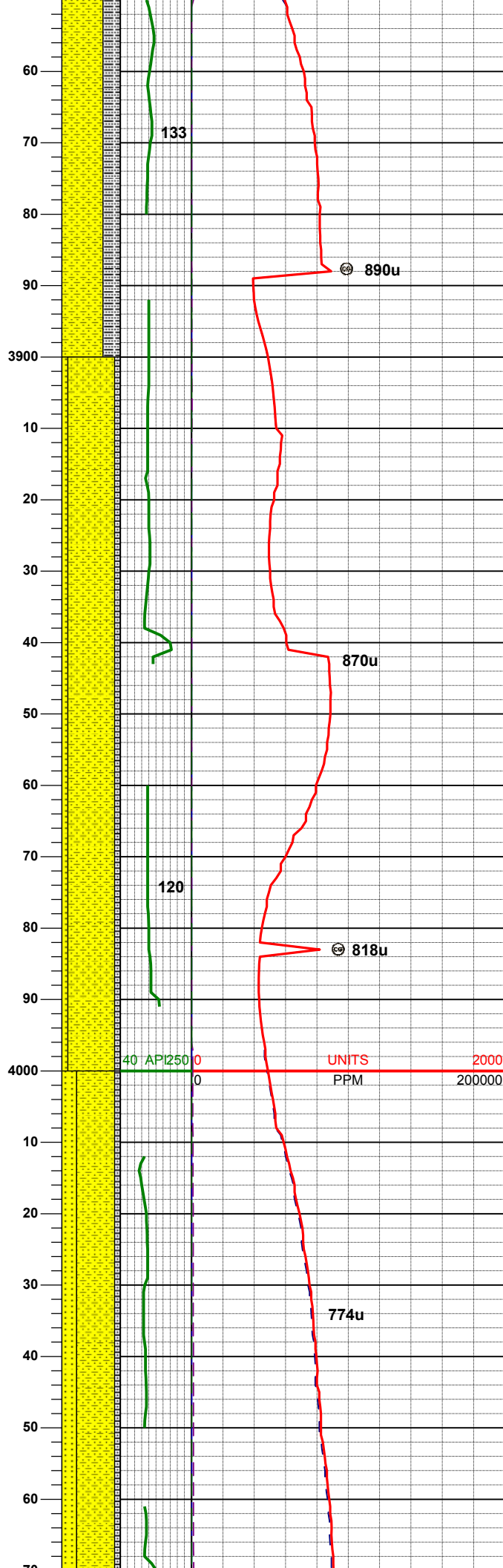
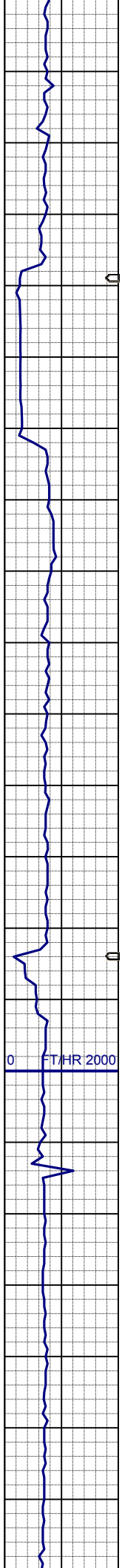
MD 3733'
INC 3.4°
AZM 132.4°
TVD 3726.38'

SHYSS: ltgy-gy, s&p ip, sbang, v fri,
vfgr, psrt, wrnnd, abnt cly, arg cmt,
sme glau
SLTYSH: ltgy-gy, sbblky-sbplty, sft, gt
-slty tex, arg cmt

WT IN 8.90/ OUT 8.90
VIS IN 28/ OUT 28

MD 3827'
INC 3.3°
AZM 98.6°
TVD 3820.23'

SLTYSH: ltgy-gy, sbblky-sbplty, sft, gt
-slty tex, arg cmt



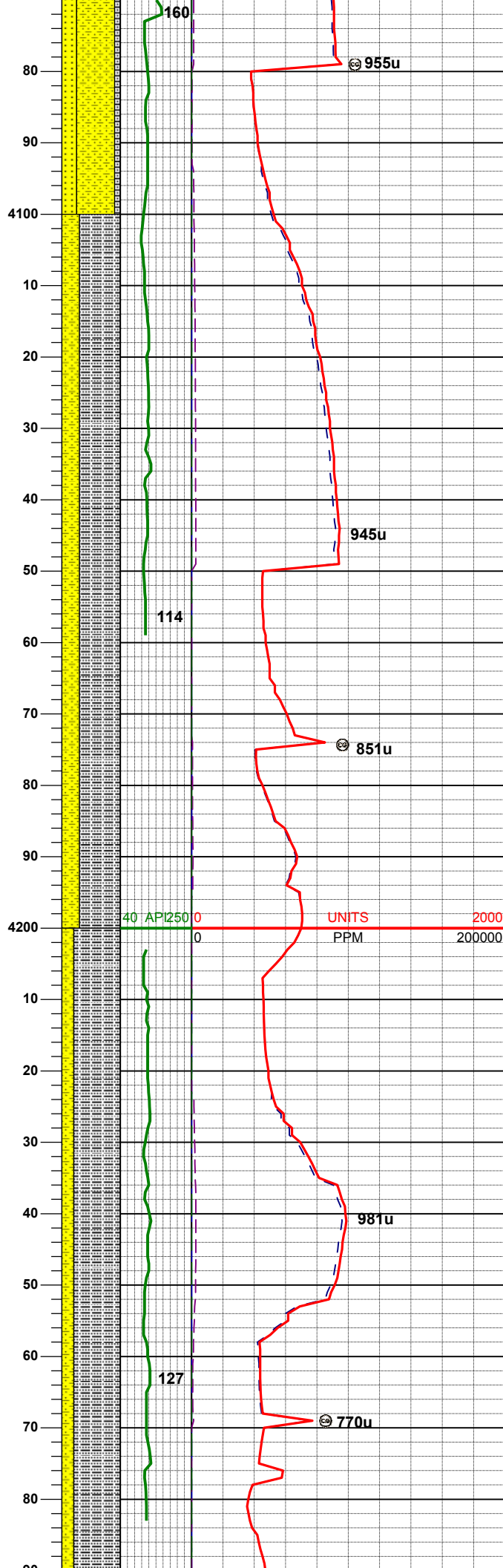
SHYSS: ltgy-gy, s&p ip, sbang, v fri,
vfgr, psrt, wrnnd, abnt cly, arg cmt,
sme glau

MD 3922'
INC 1.3°
AZM 92.5°
TVD 3915.15'

SHYSS: ltgy-gy, s&p ip, sbang, v fri,
vfgr, psrt, wrnnd, abnt cly, arg cmt,
sme glau
SLTYSH: ltgy-gy, sbblky-sbply, sft, gt
-slty tex, arg cmt
SS: wh-ltgy-trnsl, sbang-ang, fri, vfgr,
psrt, wrnnd, arg cmt

MD 4017'
INC 1.1°
AZM 105.1°
TVD 4010.13'

SHYSS: ltgy-gy, s&p ip, sbang, v fri,
vfgr, psrt, wrnnd, abnt cly, arg cmt,
sme glau
SS: wh-ltgy-trnsl, sbang-ang, fri, vfgr,
psrt, wrnnd, arg cmt
SLTYSH: ltgy-gy, sbblky-sbply, sft, gt
-slty tex, arg cmt



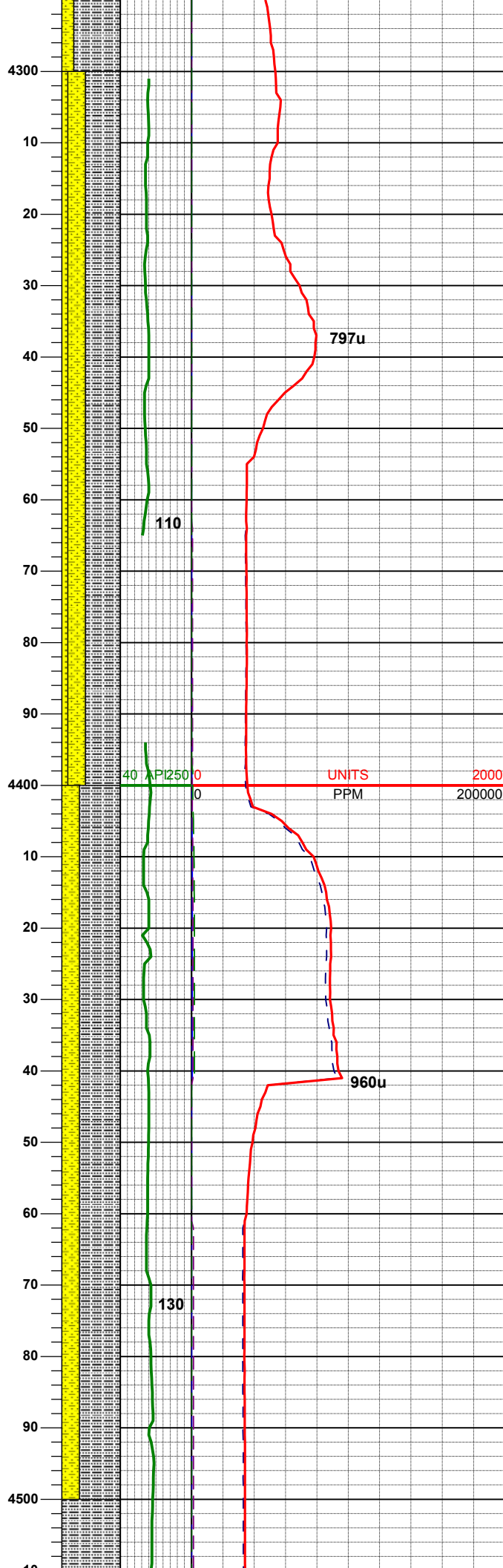
MD 4112'
INC 1.8°
AZM 130.6°
TVD 4105.10'

SLTYSH: ltgy-gy, sbbiky-sbply, sft, gt
-sly tex, arg cmt
SHYSS: ltgy-gy, s&p ip, sbang, v fri,
vfgr, psrt, wrdd, abnt cly, arg cmt, tr
glau

MD 4207'
INC 1.5°
AZM 54.9°
TVD 4200.07'

SLTYSH: ltgy-gy, sbbiky-sbply, sft, gt
-sly tex, arg cmt
SHYSS: ltgy-gy, s&p ip, sbang, v fri,
vfgr, psrt, wrdd, abnt cly, arg cmt, tr
glau

WT IN 9.20/ OUT 9.20
VIS IN 33/ OUT 33



MD	4301'
INC	1.3°
AZM	99.1°
TVD	4294.04'

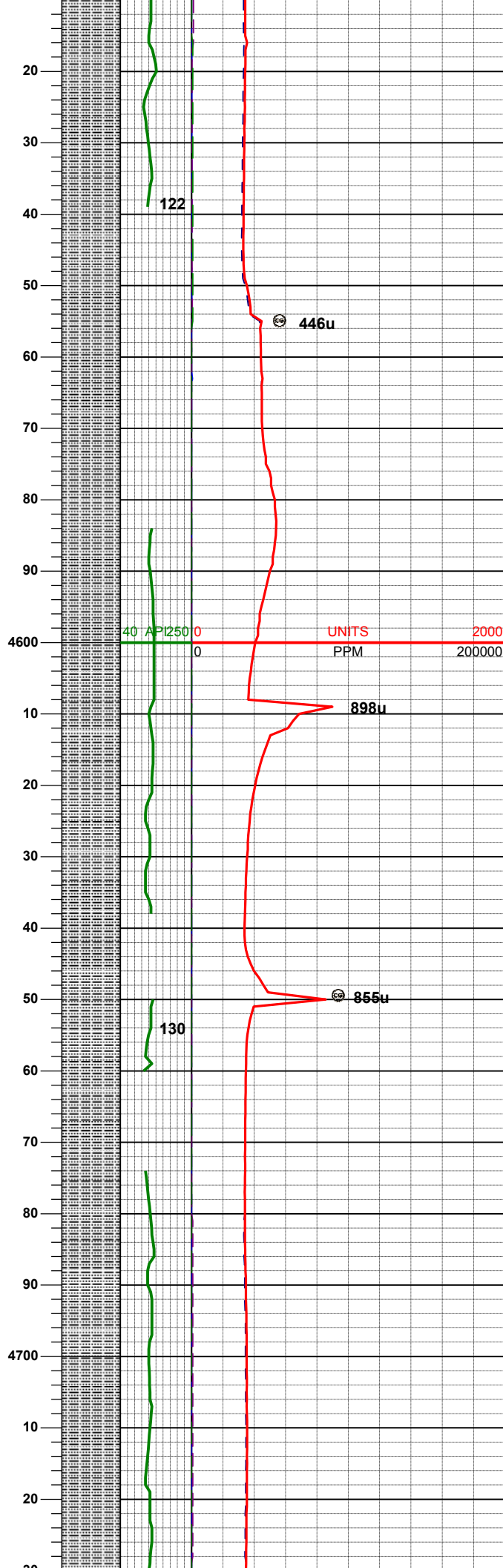
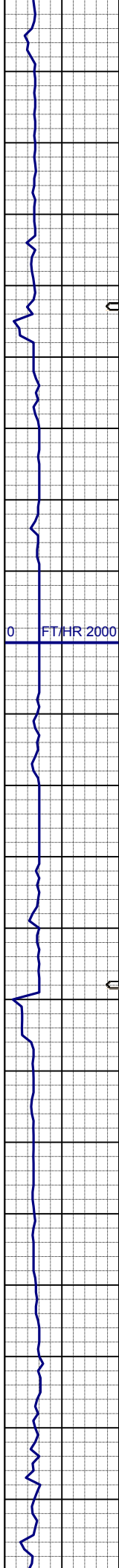
WT IN 9.30/ OUT 9.30
VIS IN 37/ OUT 37

SLTYSH: ltgy-gy, sbblky-sbplty, sft, gt
-slty tex, arg cmt
SHYSS: ltgy-gy, s&p ip, sbang, v fri,
vfgr, psrt, wrnnd, abnt cly, arg cmt, tr
glau
SS: wh-ltgy, sbang-ang, fri, fgr, psrt,
mod mdd, arg cmt

MD	4396'
INC	0.6°
AZM	124.8°
TVD	4389.03'

SLTYSH: ltgy-gy, sbblky-sbplty, sft, gt
-slty tex, arg cmt
SHYSS: ltgy-gy, s&p ip, sbang, v fri,
vfgr, psrt, wrnnd, abnt cly, arg cmt, tr
glau

MD	4491'
INC	1.1°
AZM	167.6°
TVD	4484.02'

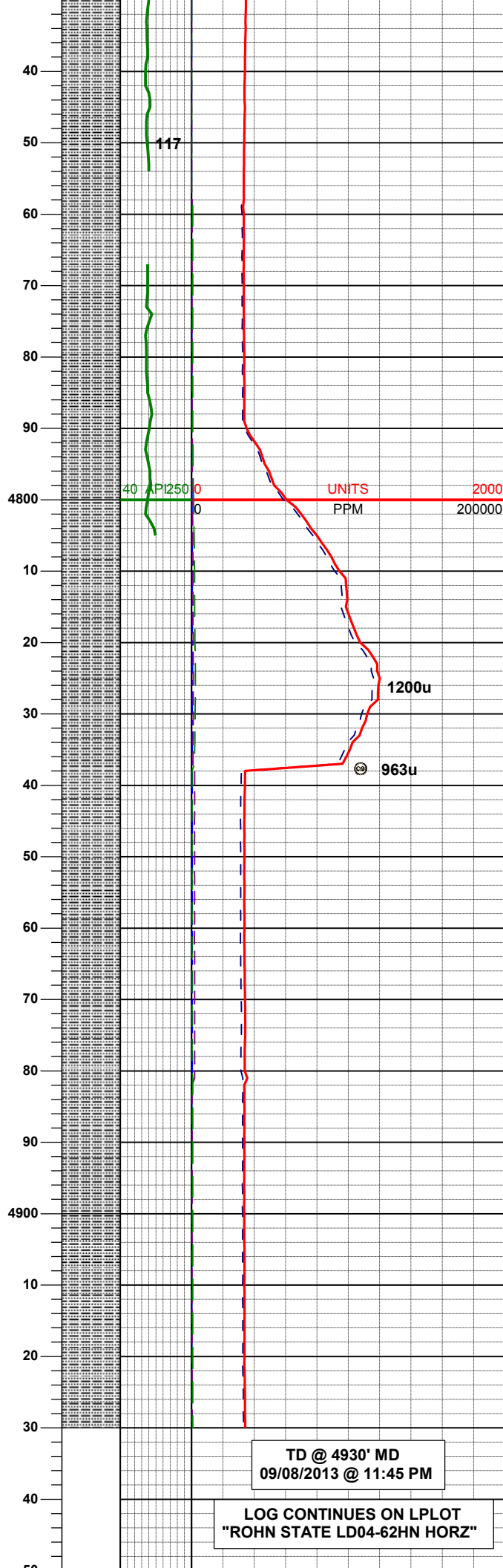


SLTYSH: Itgy-gy, sbblky-sbplty, sft, gt
-slyt tex, arg cmt

MD	4586'
INC	1.4°
AZM	151.5°
TVD	4579.00'

SLTYSH: Itgy-gy, sbblky-sbplty, sft, gt
-slyt tex, arg cmt

MD	4681'
INC	1.0°
AZM	144.7°
TVD	4673.97'



SLTYSH: Itgy-gy, sbblky-sbplty, sft, gt
-slty tex, arg cmt

MD 4776'
INC 1.1°
AZM 137.8°
TVD 4768.96'

SLTYSH: Itgy-gy, sbblky-sbplty, sft, gt
-slty tex, arg cmt

MD 4871'
INC 1.2°
AZM 156.1°
TVD 4863.94'

SLTYSH: Itgy-gy, sbblky-sbplty, sft, gt
-slty tex, arg cmt

WT IN 9.30/ OUT 9.30
VIS IN 37/ OUT 37

TD @ 4930' MD
09/08/2013 @ 11:45 PM

LOG CONTINUES ON L PLOT
"ROHN STATE LD04-62HN HORZ"

