

**RADIAL CEMENT BOND  
GAMMA RAY  
CCL**

Company KERR McGEE OIL AND GAS  
Well SHAW FLOYD C UNIT 1  
Field WATTENBERG  
County WELD State CO

Company KERR McGEE OIL AND GAS  
Well SHAW FLOYD C UNIT 1  
Field WATTENBERG  
County WELD  
State CO

Location: API # : 05-123-07741  
SW/SW  
990 FSL 1140 FWL  
Permanent Datum GL  
Log Measured From KB 10'  
Drilling Measured From KB  
SEC 1 TWP 2N RGE 67W  
Elevation 4831  
Other Services  
GR/JB  
CIBP  
CEMENT  
Elevation  
KB. 4841  
D.F. 4840  
G.L. 4831

Date 11-6-13

Run Number 4  
Depth Driller 7964  
Depth Logger 7630  
Bottom Logged Interval 7627  
Top Log Interval 372  
Open Hole Size 7.875  
Type Fluid WATER  
Density / Viscosity 1.0  
Max. Recorded Temp. 218  
Estimated Cement Top 546  
Time Well Ready N/A  
Time Logger on Bottom N/A  
Equipment Number 4310  
Location GREELEY  
Recorded By N. BREHMER  
Witnessed By LARRY WEBB

Borehole Record  
Run Number Bit From To Size Weight From To  
ONE  
TWO

Casing Record  
Surface String 8.63 Wgt/Ft 24# Top 10' Bottom 632  
Prot. String  
Production String 4.5 11.6 10' 7958  
Liner

<<< Fold Here >>>

All interpretations are opinions based on inferences from electrical or other measurements and we cannot and do not guarantee the accuracy or correctness of any interpretation, and we shall not, except in the case of gross or willful negligence on our part, be liable or responsible for any loss, costs, damages, or expenses incurred or sustained by anyone resulting from any interpretation made by any of our officers, agents or employees. These interpretations are also subject to our general terms and conditions set out in our current Price Schedule.

Comments

TIED INTO CODELL WITH GAMMA RAY  
RAN CBL TO VERIFY CEMENT BOND

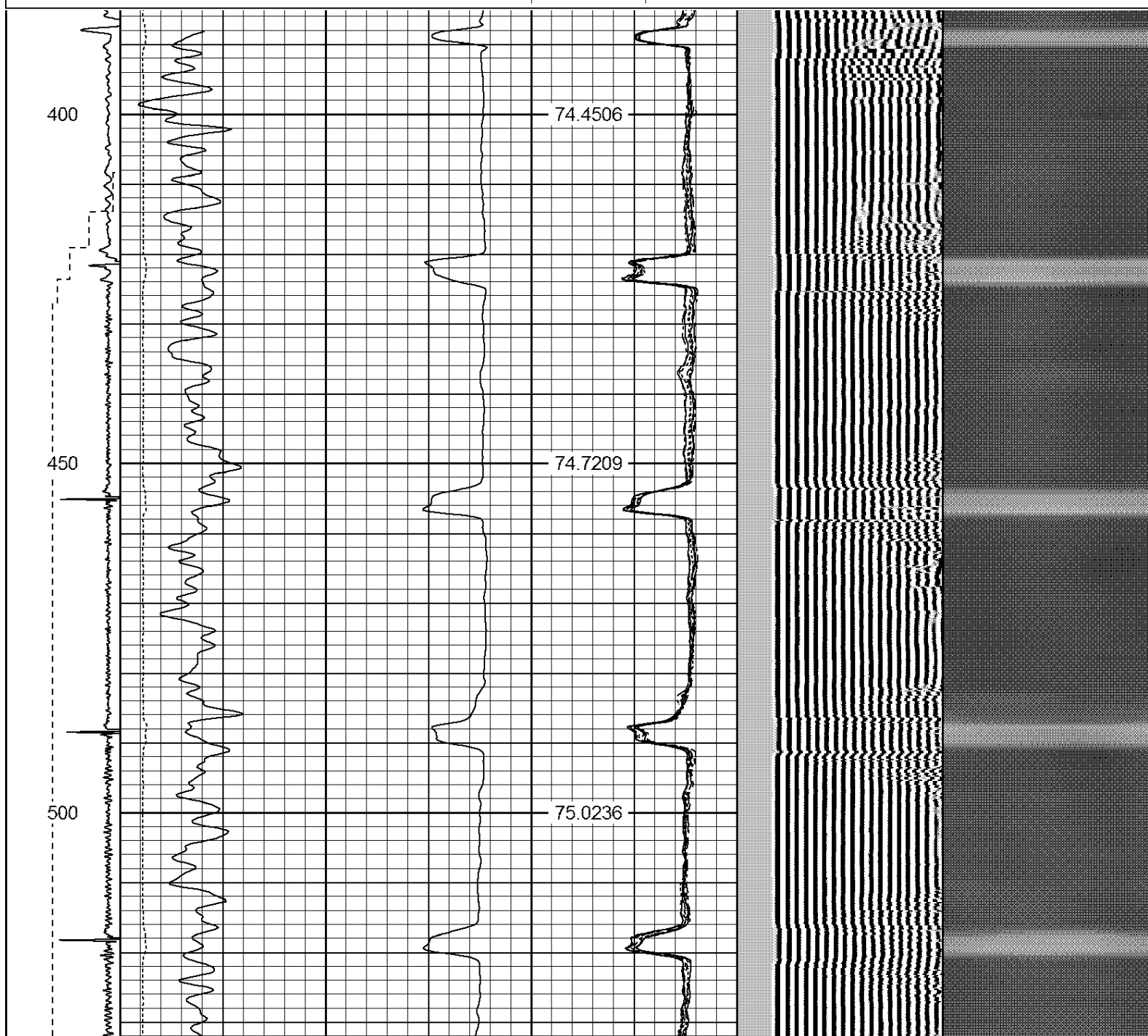
THANK YOU FOR USING WARRIOR !!!!!!!

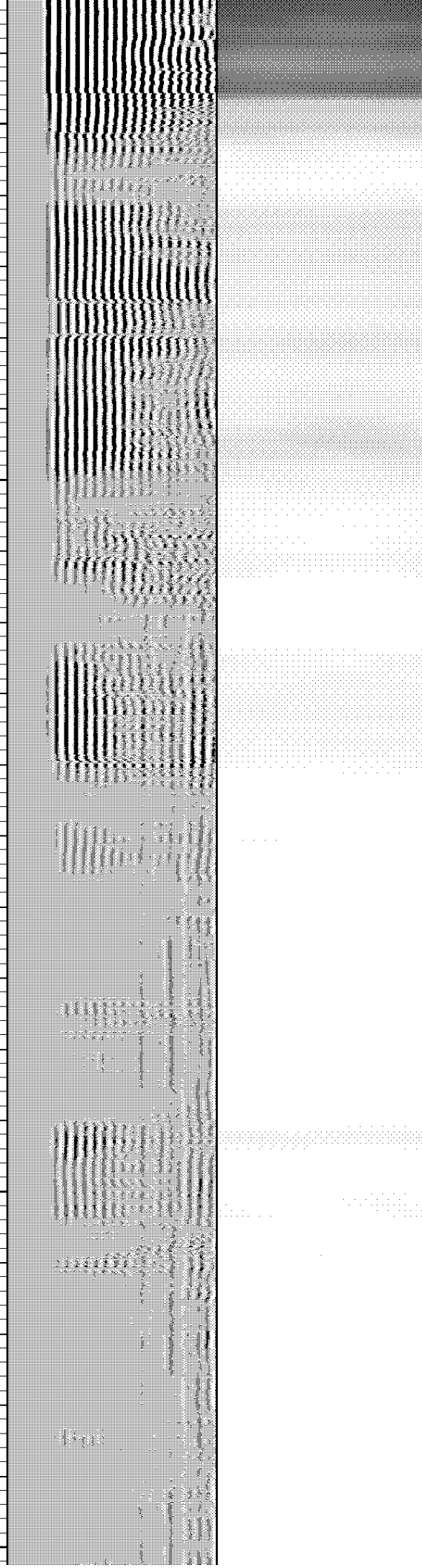
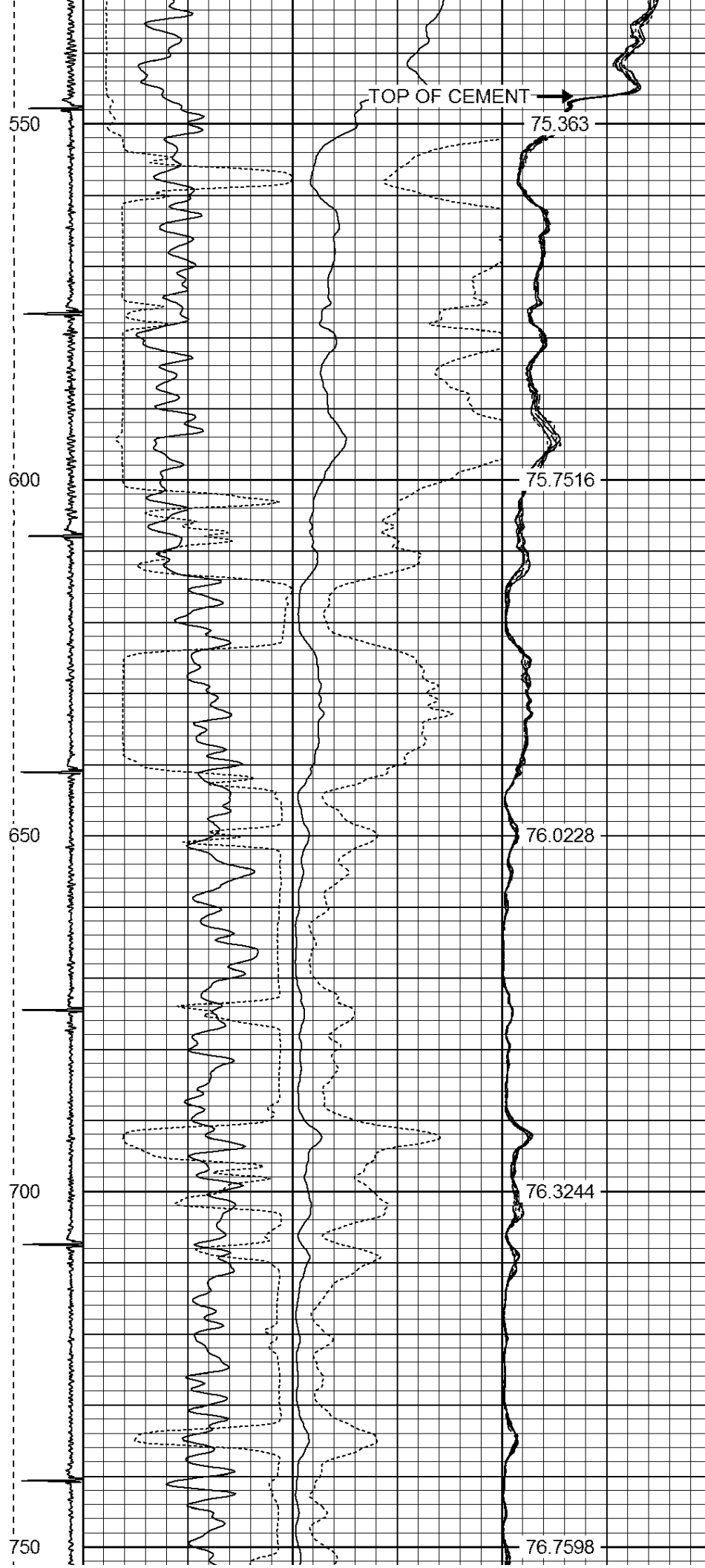
Sensor	Offset (ft)	Schematic	Description	Len (ft)	OD (in)	Wt (lb)

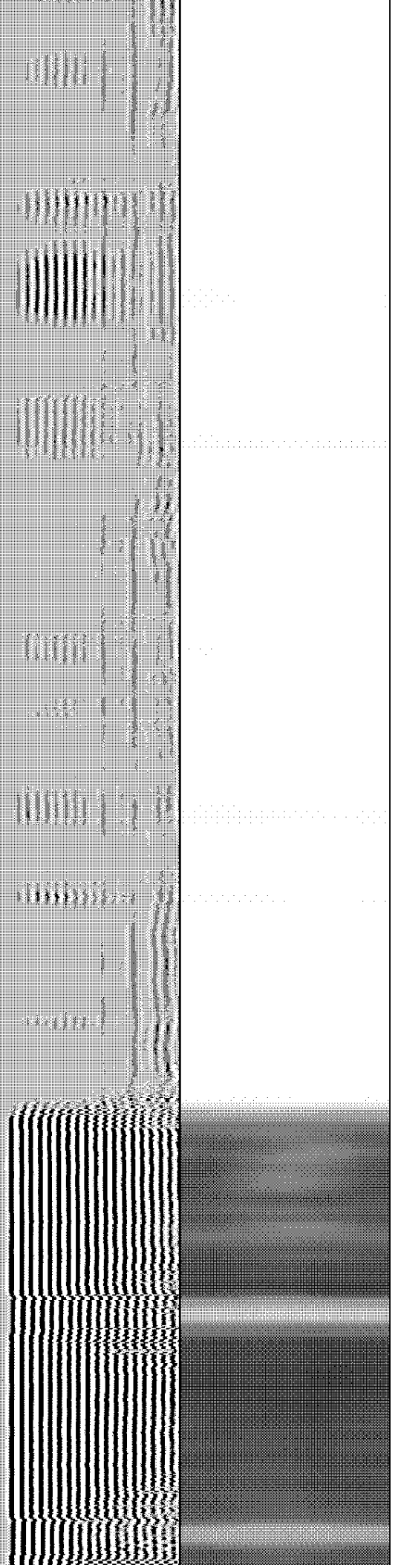
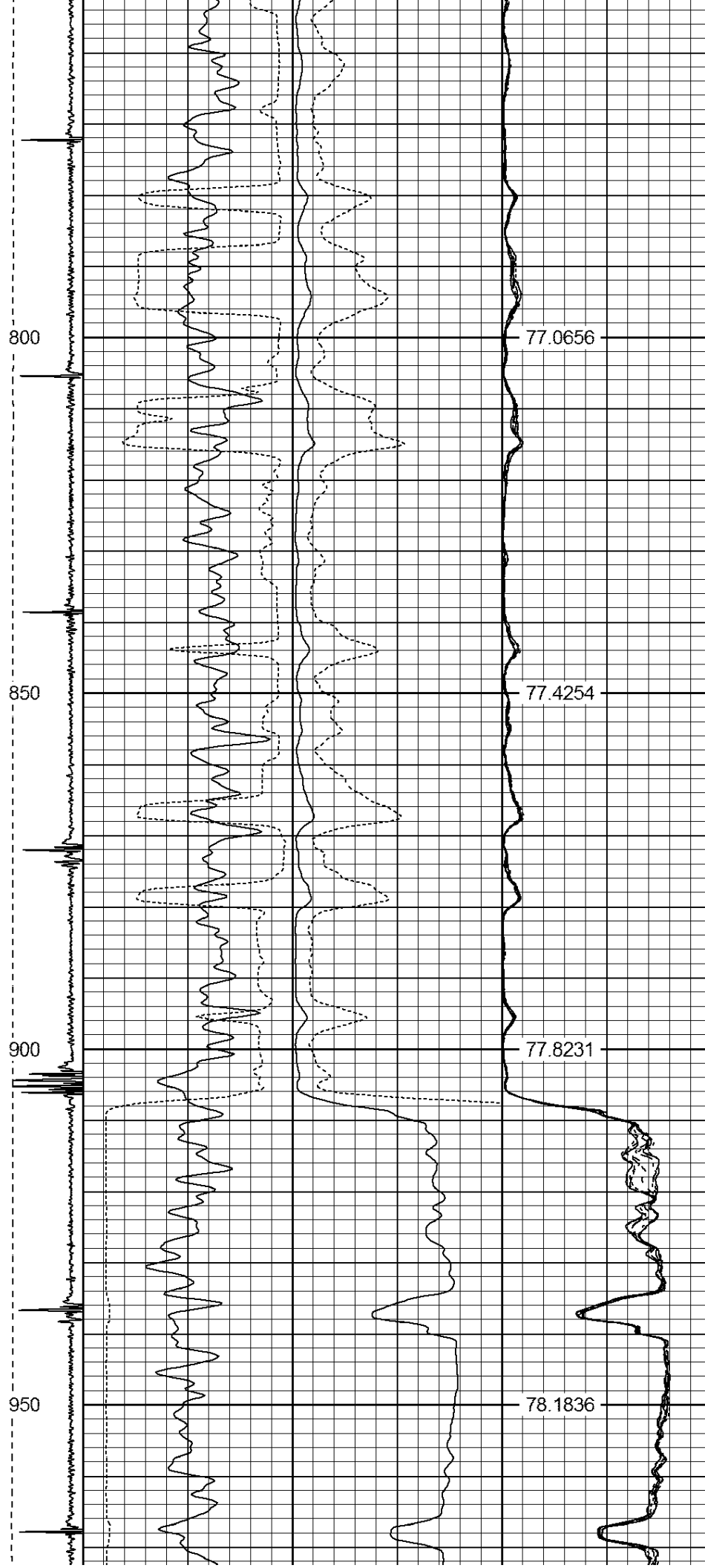


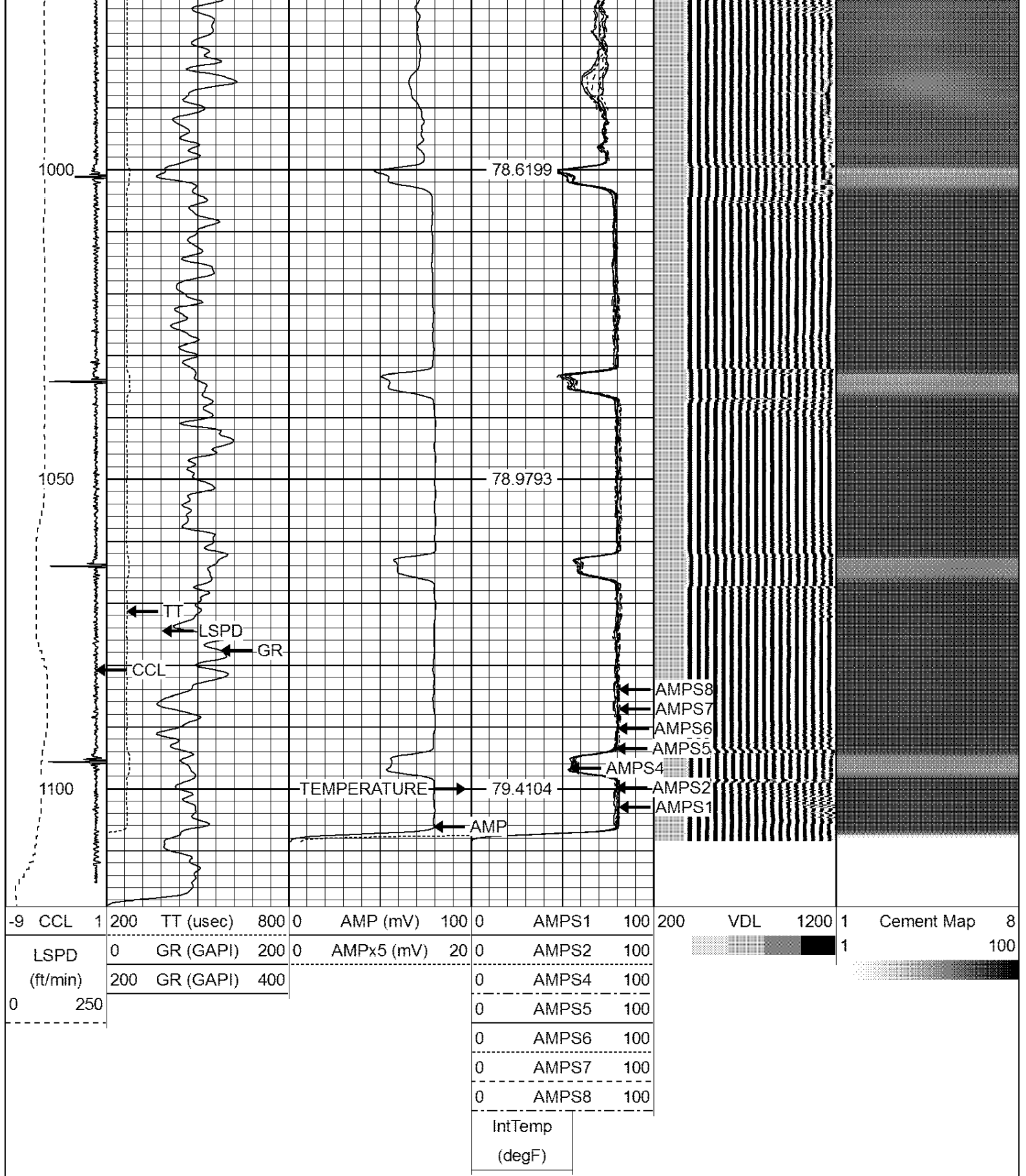
Database File: shaw floyd c unit 1.db  
 Dataset Pathname: pass17  
 Presentation Format: ips\_rbt  
 Dataset Creation: Wed Nov 06 12:46:42 2013 by Log 7.0 B1  
 Charted by: Depth in Feet scaled 1:240

-9	CCL	1	200	TT (usec)	800	0	AMP (mV)	100	0	AMPS1	100	200	VDL	1200	1	Cement Map	8
LSPD			0	GR (GAPI)	200	0	AMPx5 (mV)	20	0	AMPS2	100				1		100
(ft/min)			200	GR (GAPI)	400				0	AMPS4	100						
0		250							0	AMPS5	100						
									0	AMPS6	100						
									0	AMPS7	100						
									0	AMPS8	100						
										IntTemp							
										(degF)							





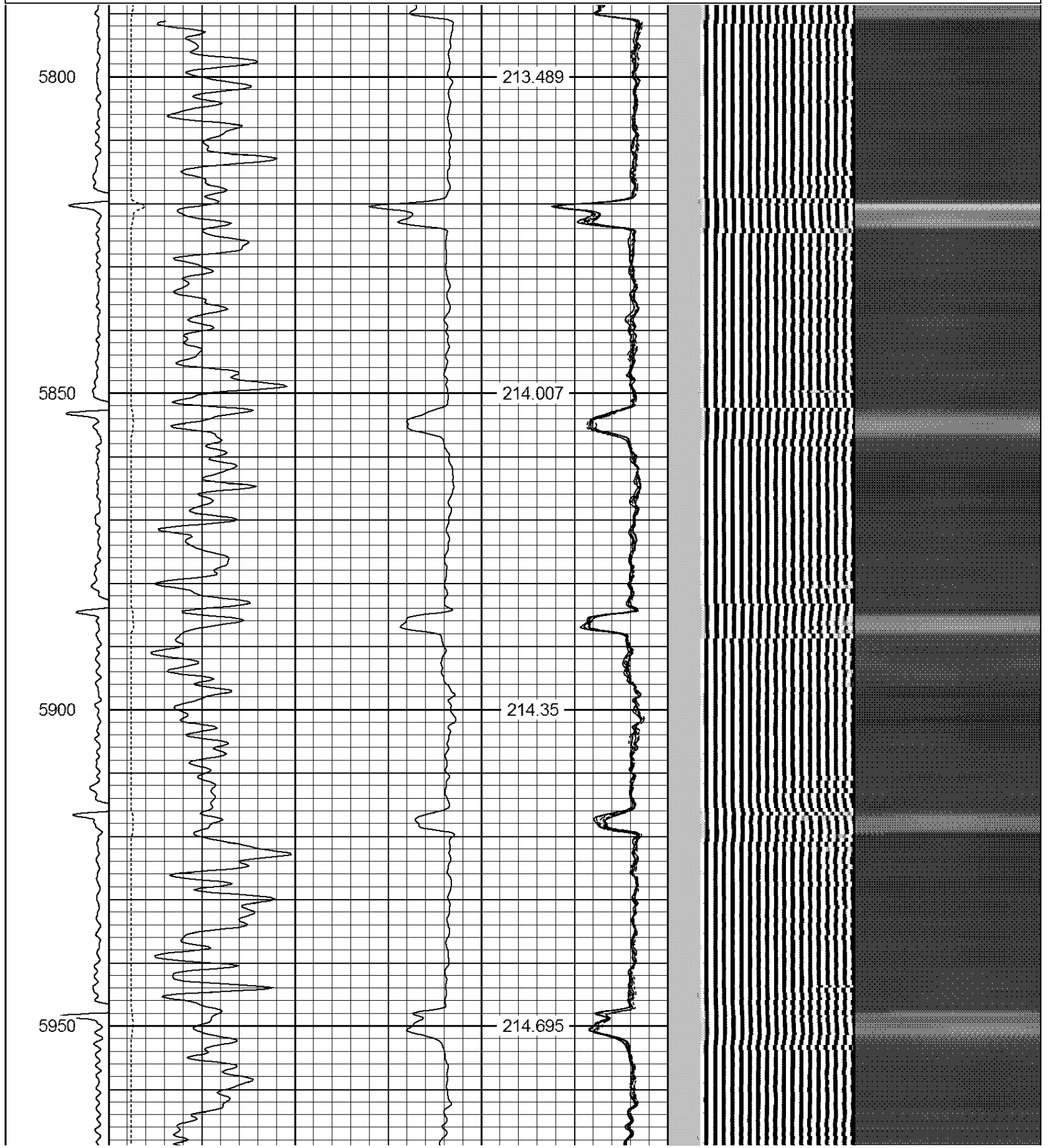




Database File: shaw floyd c unit 1.db  
Dataset Pathname: pass10  
Presentation Format: ips\_rbt  
Dataset Creation: Wed Nov 06 11:10:28 2013 by Log 7.0 B1  
Charted by: Depth in Feet scaled 1:240



LSPD (ft/min)	0	GR (GAPI)	200	0	AMPx5 (mV)	20	0	AMPS2	100
	200	GR (GAPI)	400				0	AMPS4	100
0250				0			0	AMPS5	100
							0	AMPS6	100
							0	AMPS7	100
							0	AMPS8	100
							IntTemp		
							(degF)		





6000

215.155

6050

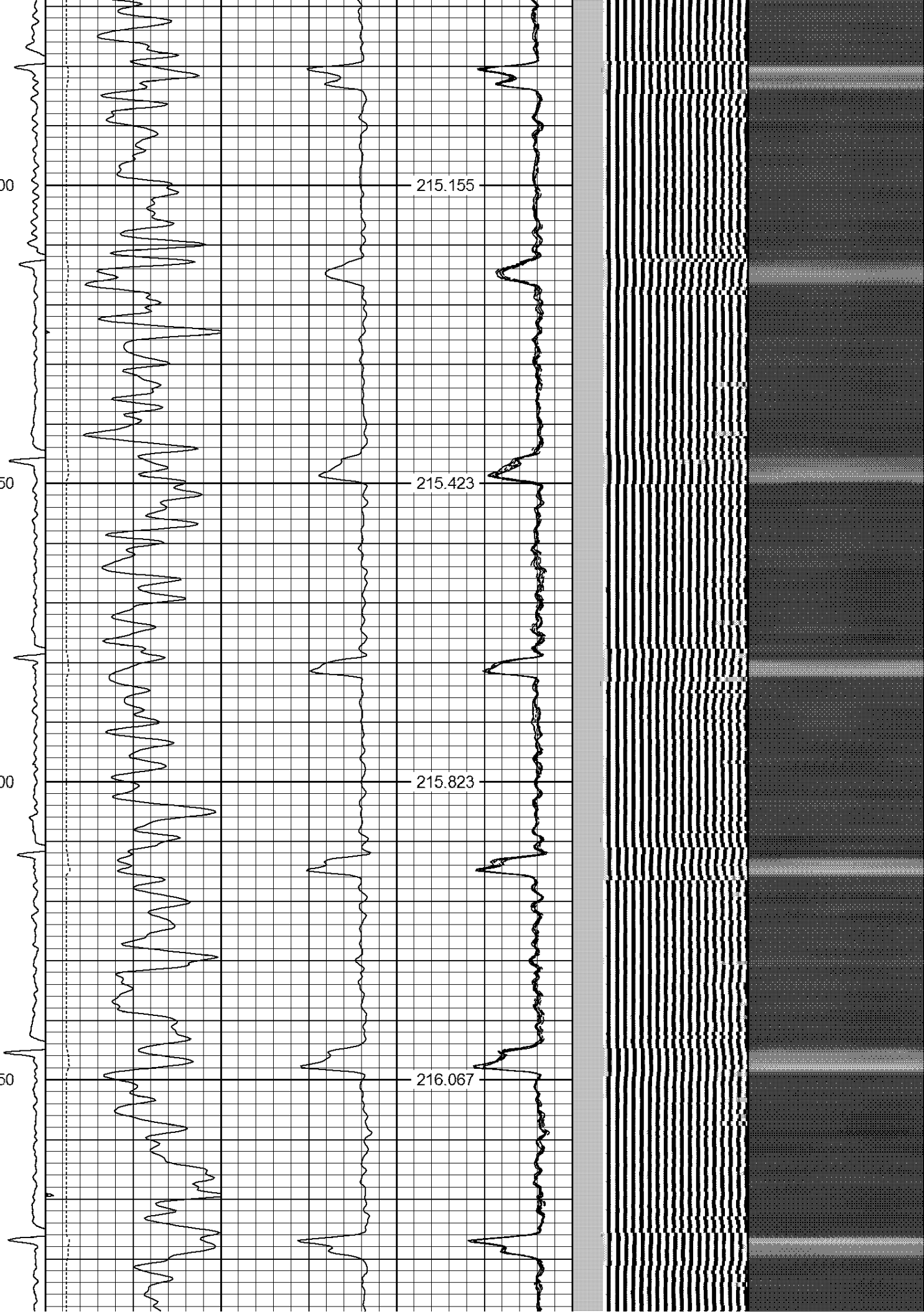
215.423

6100

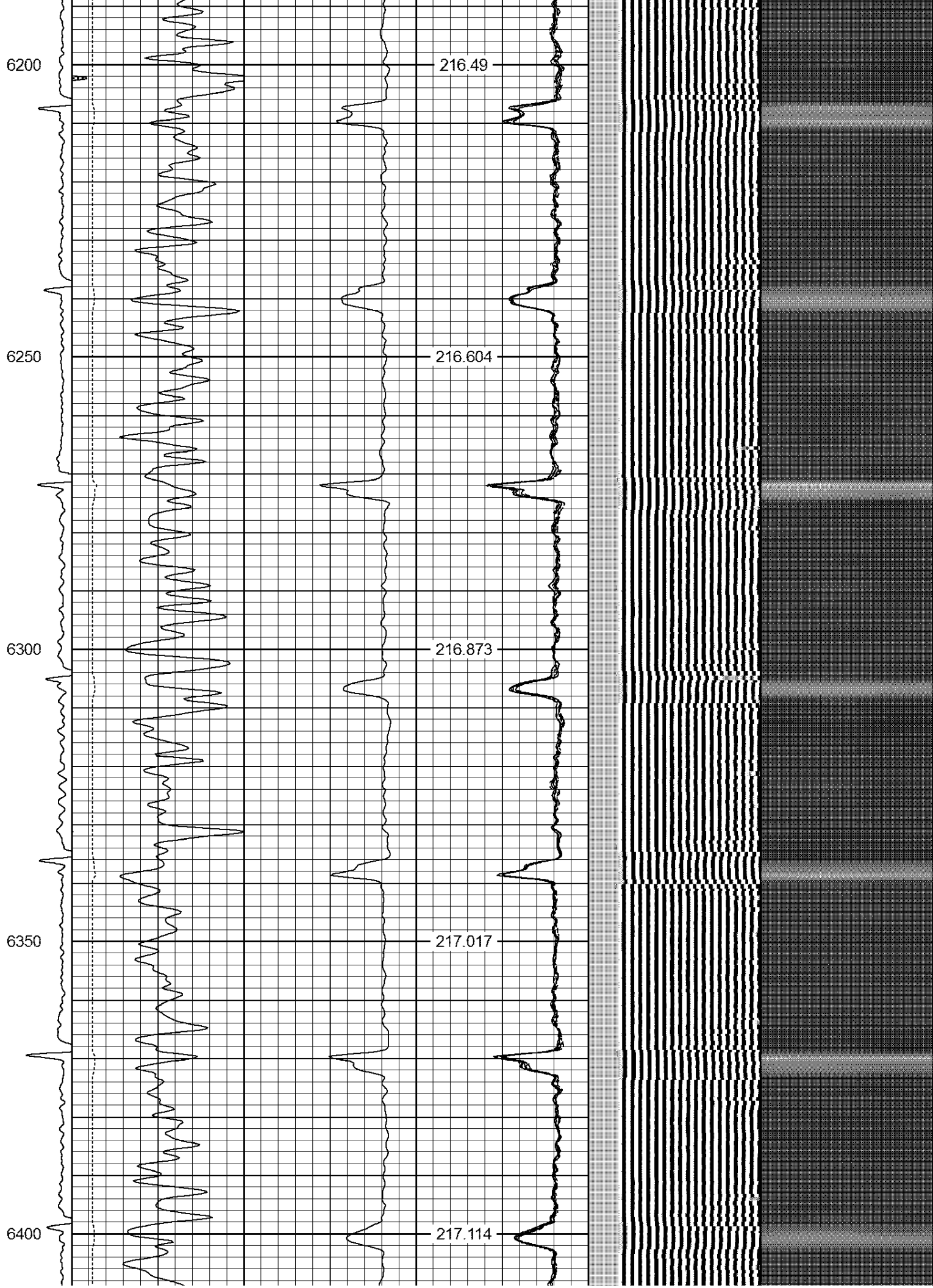
215.823

6150

216.067







6450

217.455

6500

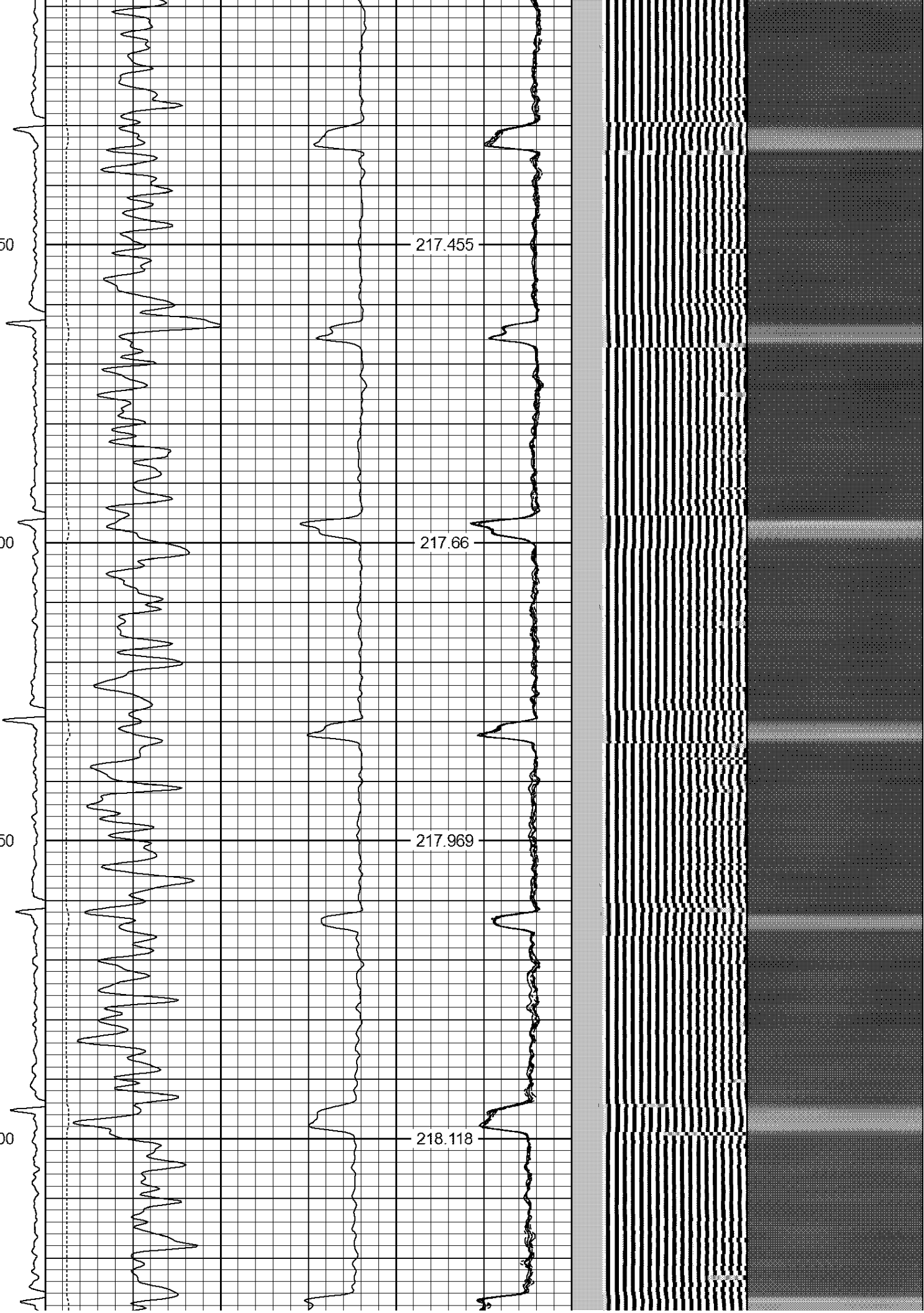
217.66

6550

217.969

6600

218.118



6650

218.269

6700

218.441

6750

218.622

6800

218.711



6850

6900

6950

7000

7050

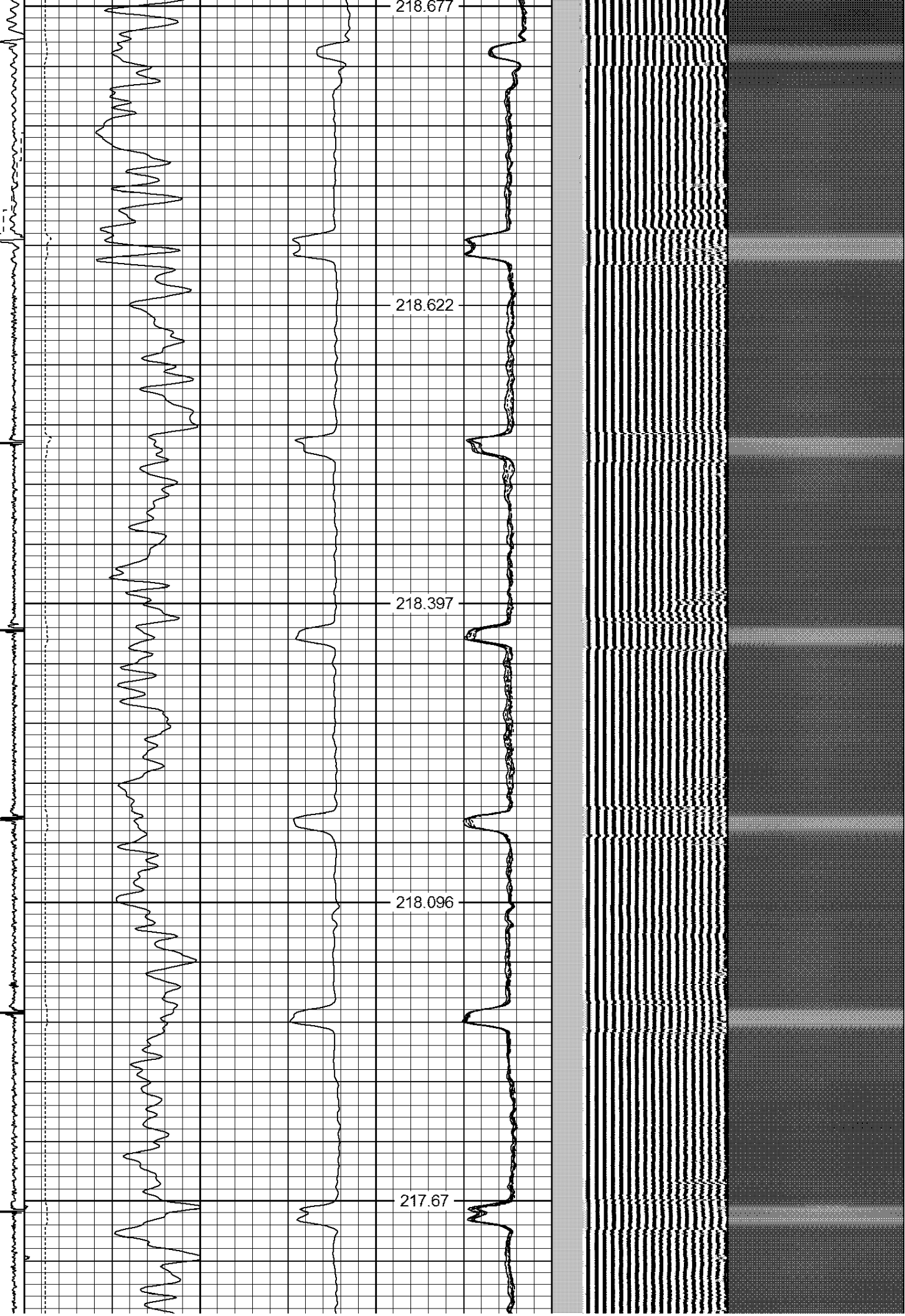
218.677

218.622

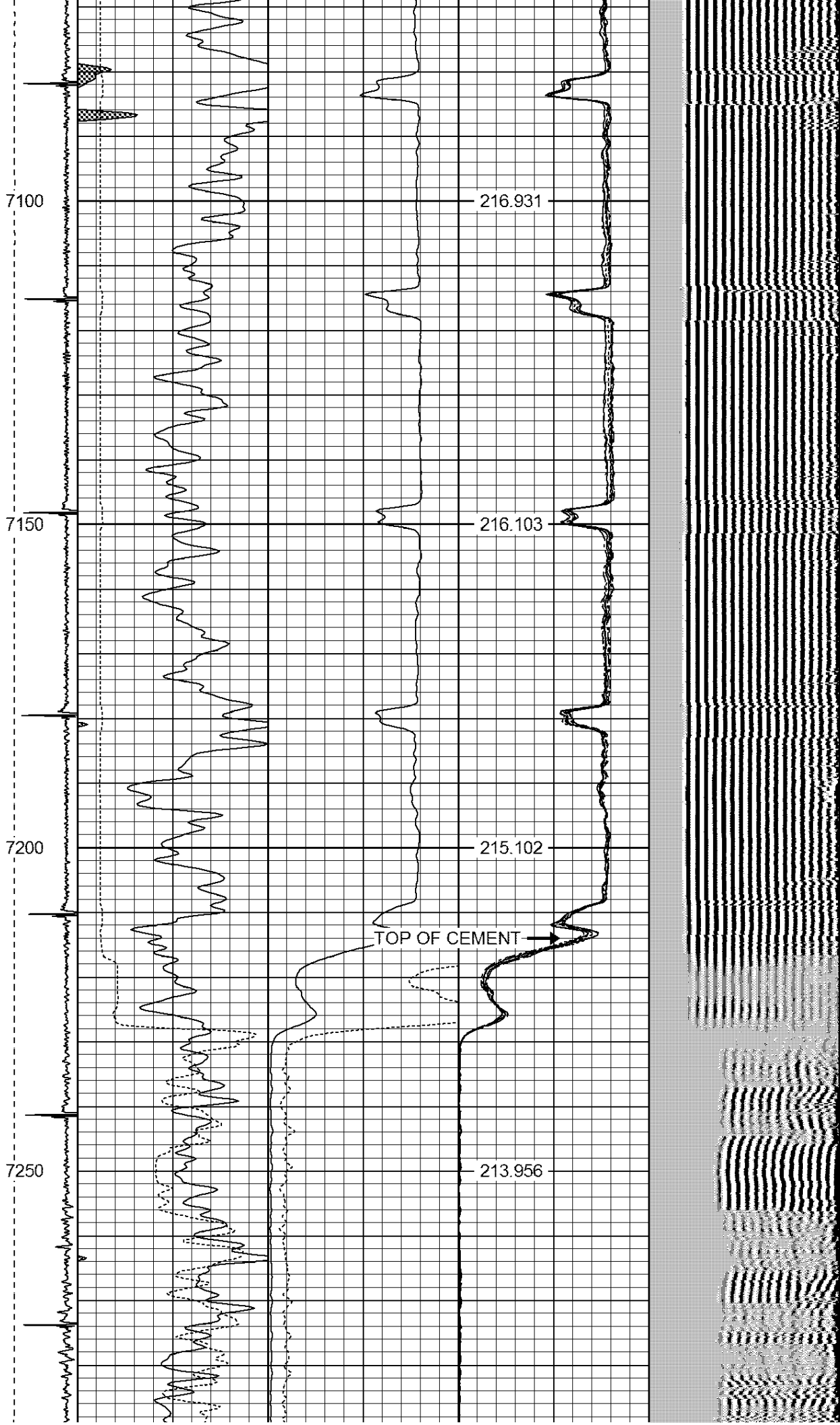
218.397

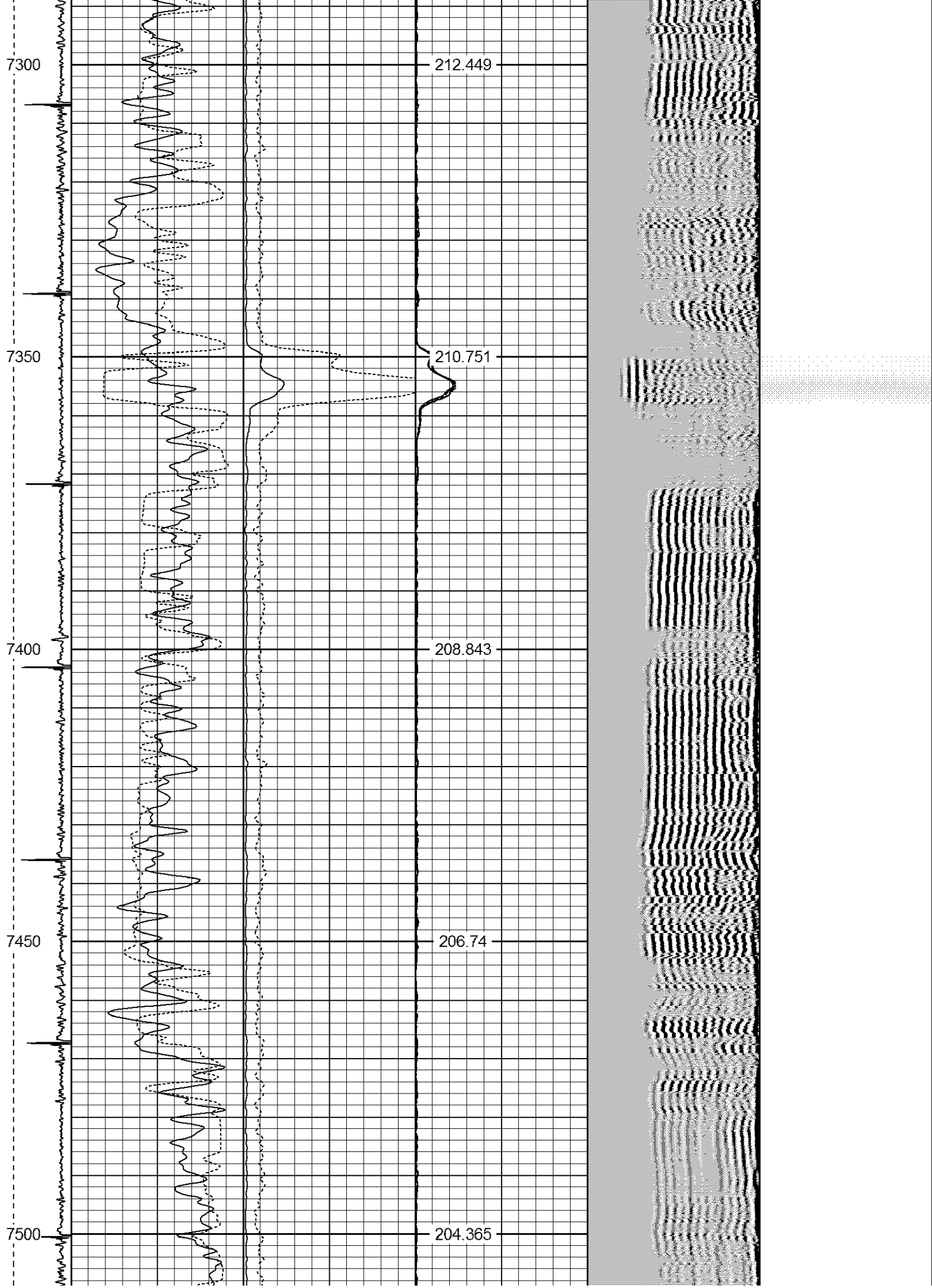
218.096

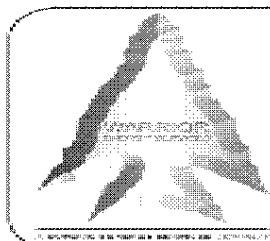
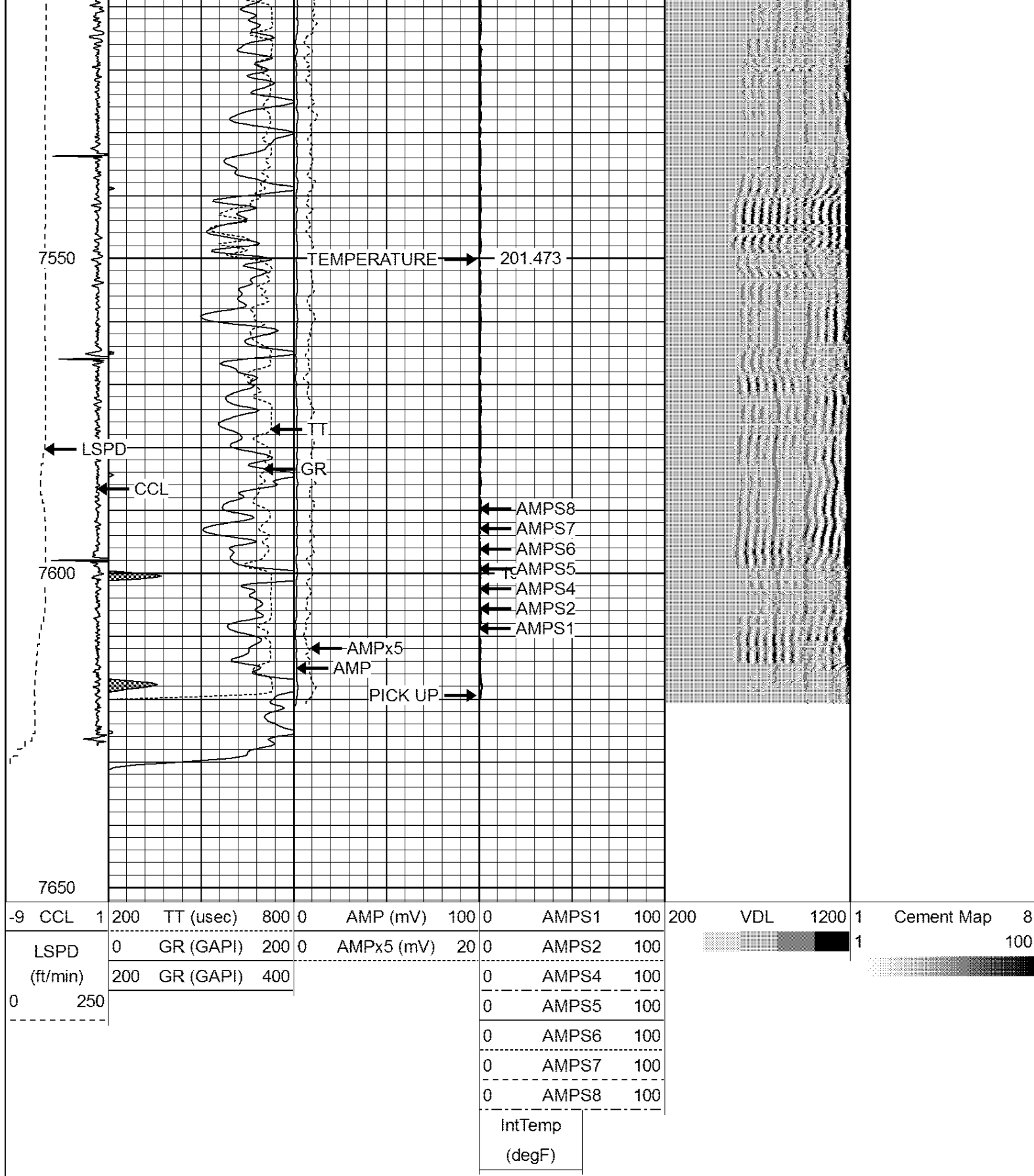
217.67











**WARRIOR**  
ENERGY SERVICES

Company KERR McGEE OIL AND GAS

Well SHAW FLOYD C UNIT 1

Field WATTENBERG

County WELD

State CO



[illegible]