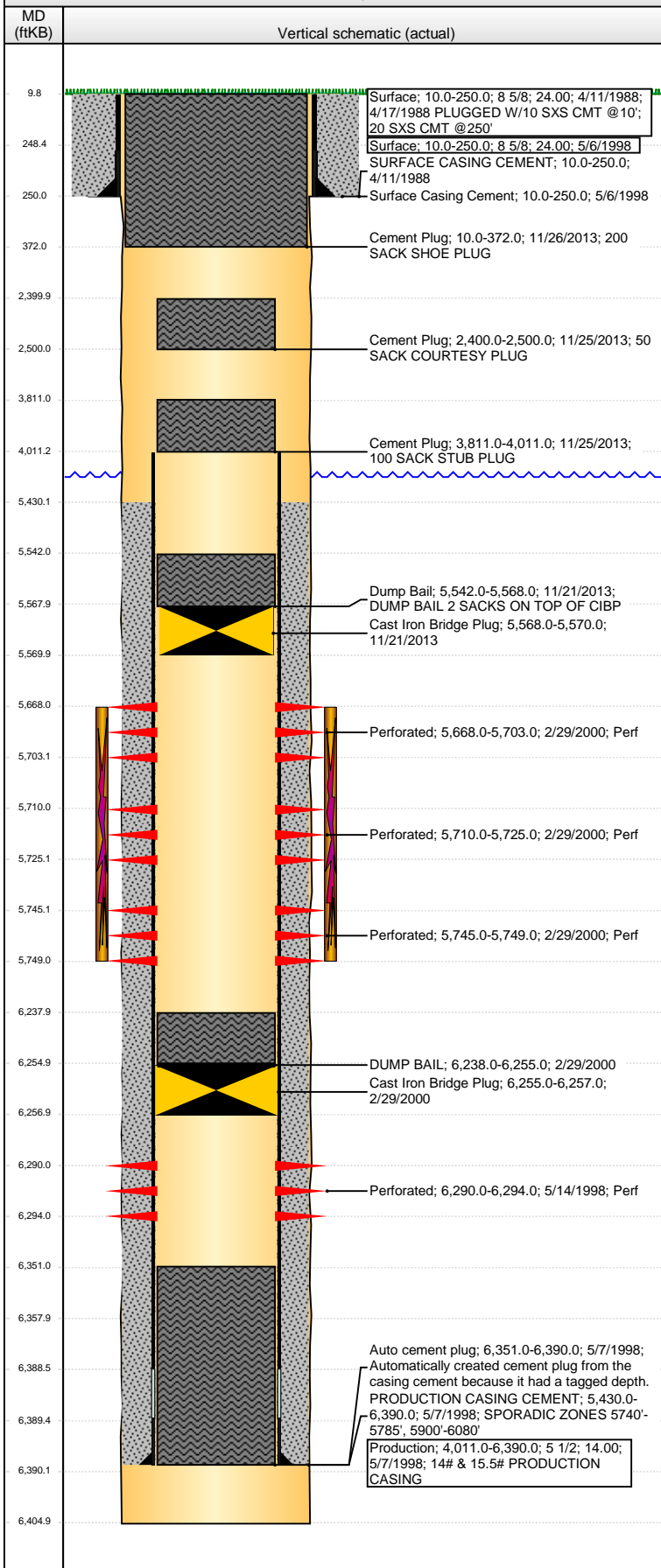


Wellbore Schematic Input Report

Well Name: STATE OF COLORADO 14-36

VERTICAL - ORIGINAL HOLE, 1/4/2014 11:50:31 AM



Well Header

API	Business Unit	District	Well Config
05-123-13918	WATTENBERG	25	VERTICAL
Original KB Elevation (ft)	KB - GL / MSL (ftKB)	Spud Date	P & A Date
4,702.00	10.00	4/11/1988	11/26/2013

Comment

14# & 15.5# PRODUCTION CASING

Directions To Well

WCR 127 & 98, EAST 2.1 MILES, NORTH 0.1 MILE AND WEST INTO.

Congressional Location

Quarter 1	Quarter 2	Quarter 3	Quarter 4	Section	Township	Twnshp N...	Range	Rng E/W Dir
		SE	SW	36	9	N	58	W

Bottom Hole Location

North-South Distance (ft)	From N or S Line	East-West Distance (ft)	From E or W Line

Plug Back Total Depths

Date	Depth (ftKB)	Method	Com
4/17/1988	10.0	TAG	P&A - CUT PIPE AND WELDED CAP ON TOP
5/12/1998	6,351.0	CASED HOLE LOG	DEPTH LOGGER ON CBL
2/29/2000	6,255.0	TAG	2 SXS CMT ON TOP CIBP @6255

Wellbore Sections

Section Des	Size (in)	Act Top, MD (ftKB)	Act Btm, MD (ftKB)
SURFACE	12 1/4	10.0	250.0
SURFACE	10 3/4	10.0	250.0
OPENHOLE	7 7/8	250.0	6,358.0
PRODUCTION	7 7/8	250.0	6,405.0

Zone Statuses

Zone Name	Status Date	Status	Job
J SAND	8/1/1998	PR	RECOMPLETION, 5/5/1998 00:00
J SAND	2/29/2000	AB	RECOMPLETION, 2/29/2000 00:00
NIOBRARA	7/1/2000	PR	RECOMPLETION, 2/29/2000 00:00
NIOBRARA	11/21/2013	P&A	ABANDON WELL, 11/22/2013 06:00

Casing Strings

Surface, 250.0ftKB

Casing Description	Run Date	OD (in)	Wt/Len (l...)	Grade	Top, MD (ft...)	MD (ftKB)
Surface	4/11/1988	8 5/8	24.00		10.0	250.0

Surface, 250.0ftKB

Casing Description	Run Date	OD (in)	Wt/Len (l...)	Grade	Top, MD (ft...)	MD (ftKB)
Surface	5/6/1998	8 5/8	24.00		10.0	250.0

Production, 6,390.0ftKB

Casing Description	Run Date	OD (in)	Wt/Len (l...)	Grade	Top, MD (ft...)	MD (ftKB)
Production	5/7/1998	5 1/2			10.0	6,390.0

Cement

Description	Top Depth (ftKB)	Bottom Depth (ftKB)
SURFACE CASING CEMENT	10.0	250.0
Surface Casing Cement	10.0	250.0
PRODUCTION CASING CEMENT	5,430.0	6,390.0
DUMP BAIL	6,238.0	6,255.0
Dump Bail	5,542.0	5,568.0
Cement Plug	3,811.0	4,011.0
Cement Plug	2,400.0	2,500.0
Cement Plug	10.0	372.0

Tubing Components

Item Des	OD (in)	Wt (lb/ft)	Grade	Jts	Len (ft)	Btm (ftKB)	Btm (TVD) (ftKB)

Perforation Data

Zone	Bnch/St g	Entered Shot Total	Top (ftKB)	Btm (ftKB)	Date
NIOBRARA, ORIGINAL HOLE		70	5,668.00	5,703.00	2/29/2000
NIOBRARA, ORIGINAL HOLE		30	5,710.00	5,725.00	2/29/2000
NIOBRARA, ORIGINAL HOLE		16	5,745.00	5,749.00	2/29/2000
J SAND, ORIGINAL HOLE		10	6,290.00	6,294.00	5/14/1998

Well Name: STATE OF COLORADO 14-36

VERTICAL - ORIGINAL HOLE, 1/4/2014 11:50:34 AM

Stimulations & Treatments

Date 2/29/2000	Zone NIOBRARA, ORIGINAL HOLE	Primary Job Type RECOMPLETION
Technical Result	Tech Result Details	Tech Result Note

Comment

BROKE PERFS WITH 100 BBLS OF LEASE CRUDE

Other In Hole

Run Date	Des	OD (in)	Top (ftKB)	Btm (ftKB)
2/29/2000	Cast Iron Bridge Plug	5 1/4	6,255.0	6,257.0
11/21/2013	Cast Iron Bridge Plug	4.9	5,568.0	5,570.0

Logs

Date	Type	Top, MD (ftKB)	Btm, MD (ftKB)
4/16/1988	COMPENSATED DENSITY	5,350.0	6,355.0
4/16/1988	FIELD ANALYSIS	5,410.0	6,350.0
4/16/1988	INDUCTION	250.0	6,355.0
4/16/1988	MINILOG-GR	5,350.0	6,355.0
5/12/1998	CEMENT BOND	5,302.0	6,345.0
9/6/2000	GAMMA RAY	5,500.0	5,750.0

