

# BONANZA CREEK ENERGY OPERATING

Well Name: **Antelope 24-21-20HC**

Surface Location: Antelope J-20 Pad Sec.20-T5N-R62W  
North American Datum 1983 , US State Plane 1983 , Colorado Northern Zone

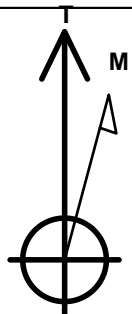
Ground Elevation: 4665.0

+N/-S	+E/-W	Northing	Easting	Latitude	Longitude	Slot
0.0	0.0	1382952.90	3319945.73	40.378920	-104.351550	

RKB - 13' WELL @ 4678.0ft (RKB - 13')

## WELLBORE TARGET DETAILS

Name	TVD	+N/-S	+E/-W	Shape
SHL 390'FSL & 1435'FWL	1.0	0.0	0.0	Point
BHL 470'FNL & 1576'FWL	6539.0	4393.6	172.7	Point
T1 531'FSL & 1600'FWL	6539.0	142.1	167.2	Point



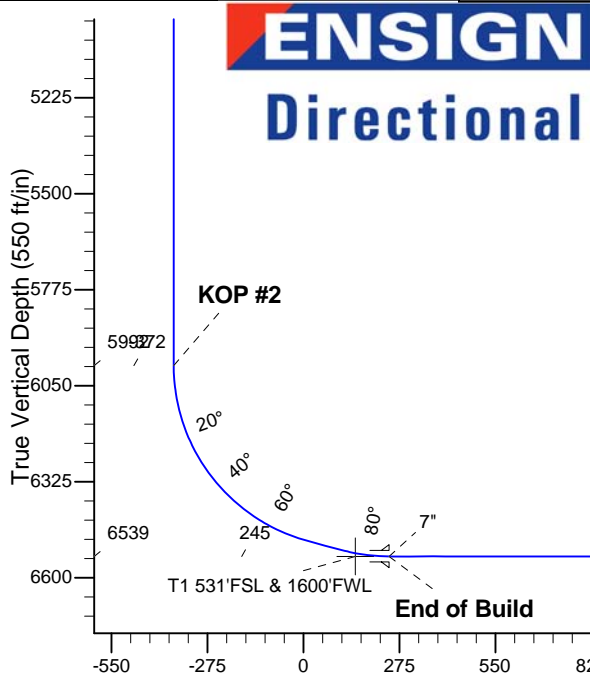
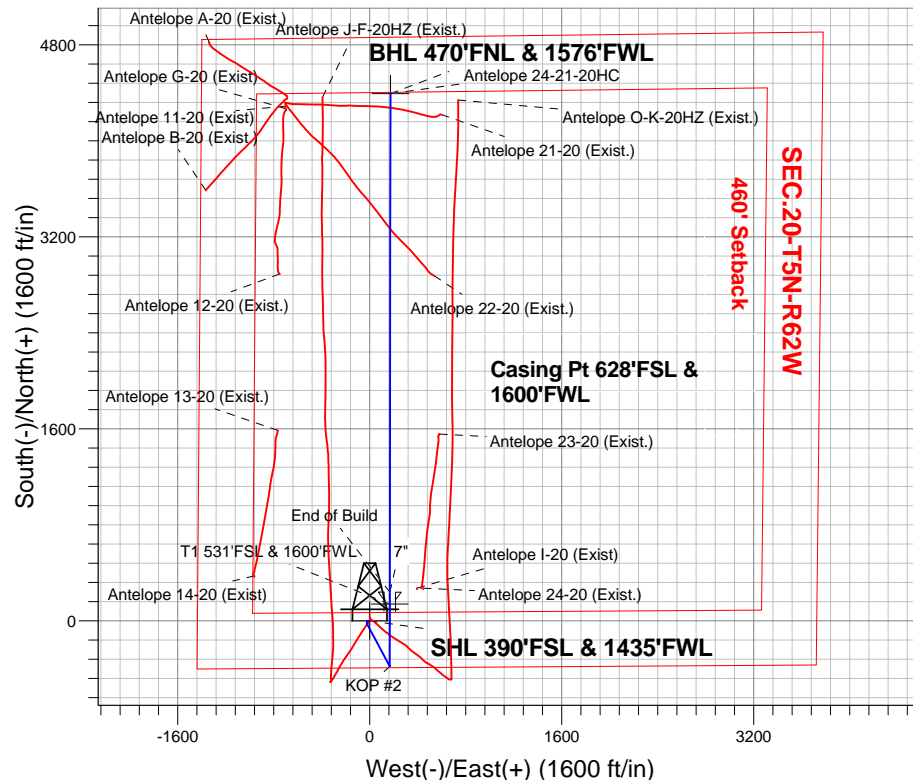
Azimuths to True North  
Magnetic North: 8.31°

Magnetic Field  
Strength: 52910.2srT  
Dip Angle: 67.02°  
Date: 11/13/2013  
Model: IGRF2010

Antelope J-20 Pad Sec.20-T5N-R62W  
Antelope 24-21-20HC  
Plan #2 (11-13-13)  
17:09, November 14 2013

## ANNOTATIONS

TVD	MD	Annotation
200.0	200.0	KOP #1
5992.2	6021.1	KOP #2
6539.0	6939.3	End of Build



## SECTION DETAILS

Sec	MD	Inc	Azi	TVD	+N/-S	+E/-W	DLeg	TFace	VSec	Target
1	0.0	0.00	0.00	0.0	0.0	0.0	0.00	0.00	0.0	
2	200.0	0.00	0.00	200.0	0.0	0.0	0.00	0.00	0.0	
3	450.0	5.00	270.00	449.7	0.0	-10.9	2.00	270.00	-0.4	
4	1011.0	7.97	151.86	1008.7	-34.4	-17.0	2.00	-141.09	-35.0	
5	3630.6	7.97	151.86	3603.0	-354.5	154.2	0.00	0.00	-348.2	
6	4028.9	0.00	0.00	4000.0	-378.9	167.2	2.00	180.00	-372.0	
7	6021.1	0.00	0.00	5992.2	-378.9	167.2	0.00	0.00	-372.0	
8	6702.9	75.00	0.07	6495.4	7.2	167.6	11.00	0.07	13.7	
9	6802.9	75.00	0.07	6521.3	103.8	167.8	0.00	0.00	110.3	
10	6939.3	90.00	0.07	6539.0	238.6	167.9	11.00	0.00	245.0	
11	11094.3	90.00	0.07	6539.0	4393.6	172.7	0.00	0.00	4397.0	BHL 470'FNL & 1576'FWL

BHL 470'FNL & 1576'FWL

Vertical Section at 2.25° (550 ft/in)



# **BONANZA CREEK ENERGY OPERATING**

**SEC.20-T5N-R62W**

**Antelope J-20 Pad Sec.20-T5N-R62W**

**Antelope 24-21-20HC**

**Wellbore #1**

**Plan: Plan #2 (11-13-13)**

## **Standard Planning Report**

**14 November, 2013**



<b>Database:</b>	Landmark	<b>Local Co-ordinate Reference:</b>	Well Antelope 24-21-20HC
<b>Company:</b>	BONANZA CREEK ENERGY OPERATING	<b>TVD Reference:</b>	WELL @ 4678.0ft (RKB - 13')
<b>Project:</b>	SEC.20-T5N-R62W	<b>MD Reference:</b>	WELL @ 4678.0ft (RKB - 13')
<b>Site:</b>	Antelope J-20 Pad Sec.20-T5N-R62W	<b>North Reference:</b>	True
<b>Well:</b>	Antelope 24-21-20HC	<b>Survey Calculation Method:</b>	Minimum Curvature
<b>Wellbore:</b>	Wellbore #1		
<b>Design:</b>	Plan #2 (11-13-13)		

Planned Survey									
Measured Depth (ft)	Inclination (°)	Azimuth (°)	Vertical Depth (ft)	+N/-S (ft)	+E/-W (ft)	Vertical Section (ft)	Dogleg Rate (°/100ft)	Build Rate (°/100ft)	Turn Rate (°/100ft)
0.0	0.00	0.00	0.0	0.0	0.0	0.0	0.00	0.00	0.00
1.0	0.00	0.00	1.0	0.0	0.0	0.0	0.00	0.00	0.00
<b>SHL 390'FSL &amp; 1435'FWL</b>									
100.0	0.00	0.00	100.0	0.0	0.0	0.0	0.00	0.00	0.00
200.0	0.00	0.00	200.0	0.0	0.0	0.0	0.00	0.00	0.00
<b>KOP #1</b>									
300.0	2.00	270.00	300.0	0.0	-1.7	-0.1	2.00	2.00	0.00
400.0	4.00	270.00	399.8	0.0	-7.0	-0.3	2.00	2.00	0.00
450.0	5.00	270.00	449.7	0.0	-10.9	-0.4	2.00	2.00	0.00
500.0	4.27	261.53	499.5	-0.3	-14.9	-0.9	2.00	-1.46	-16.94
600.0	3.26	234.72	599.3	-2.5	-20.9	-3.3	2.00	-1.01	-26.81
700.0	3.33	199.39	699.2	-6.8	-24.2	-7.8	2.00	0.06	-35.34
800.0	4.41	174.06	798.9	-13.4	-24.8	-14.4	2.00	1.09	-25.33
900.0	5.99	160.30	898.5	-22.2	-22.6	-23.0	2.00	1.58	-13.76
1,000.0	7.76	152.51	997.8	-33.1	-17.7	-33.7	2.00	1.77	-7.79
1,011.0	7.97	151.86	1,008.7	-34.4	-17.0	-35.0	2.00	1.83	-5.85
1,100.0	7.97	151.86	1,096.8	-45.3	-11.2	-45.7	0.00	0.00	0.00
1,200.0	7.97	151.86	1,195.9	-57.5	-4.7	-57.6	0.00	0.00	0.00
1,300.0	7.97	151.86	1,294.9	-69.7	1.8	-69.6	0.00	0.00	0.00
1,400.0	7.97	151.86	1,393.9	-81.9	8.4	-81.5	0.00	0.00	0.00
1,500.0	7.97	151.86	1,493.0	-94.1	14.9	-93.5	0.00	0.00	0.00
1,600.0	7.97	151.86	1,592.0	-106.4	21.5	-105.4	0.00	0.00	0.00
1,700.0	7.97	151.86	1,691.0	-118.6	28.0	-117.4	0.00	0.00	0.00
1,800.0	7.97	151.86	1,790.1	-130.8	34.5	-129.4	0.00	0.00	0.00
1,900.0	7.97	151.86	1,889.1	-143.0	41.1	-141.3	0.00	0.00	0.00
2,000.0	7.97	151.86	1,988.2	-155.3	47.6	-153.3	0.00	0.00	0.00
2,100.0	7.97	151.86	2,087.2	-167.5	54.1	-165.2	0.00	0.00	0.00
2,200.0	7.97	151.86	2,186.2	-179.7	60.7	-177.2	0.00	0.00	0.00
2,300.0	7.97	151.86	2,285.3	-191.9	67.2	-189.1	0.00	0.00	0.00
2,400.0	7.97	151.86	2,384.3	-204.1	73.7	-201.1	0.00	0.00	0.00
2,500.0	7.97	151.86	2,483.3	-216.4	80.3	-213.0	0.00	0.00	0.00
2,600.0	7.97	151.86	2,582.4	-228.6	86.8	-225.0	0.00	0.00	0.00
2,700.0	7.97	151.86	2,681.4	-240.8	93.3	-236.9	0.00	0.00	0.00
2,800.0	7.97	151.86	2,780.4	-253.0	99.9	-248.9	0.00	0.00	0.00
2,900.0	7.97	151.86	2,879.5	-265.2	106.4	-260.9	0.00	0.00	0.00
3,000.0	7.97	151.86	2,978.5	-277.5	113.0	-272.8	0.00	0.00	0.00
3,100.0	7.97	151.86	3,077.5	-289.7	119.5	-284.8	0.00	0.00	0.00
3,200.0	7.97	151.86	3,176.6	-301.9	126.0	-296.7	0.00	0.00	0.00
3,300.0	7.97	151.86	3,275.6	-314.1	132.6	-308.7	0.00	0.00	0.00
3,400.0	7.97	151.86	3,374.6	-326.3	139.1	-320.6	0.00	0.00	0.00
3,500.0	7.97	151.86	3,473.7	-338.6	145.6	-332.6	0.00	0.00	0.00
3,600.0	7.97	151.86	3,572.7	-350.8	152.2	-344.5	0.00	0.00	0.00
3,630.6	7.97	151.86	3,603.0	-354.5	154.2	-348.2	0.00	0.00	0.00
3,700.0	6.58	151.86	3,671.9	-362.3	158.3	-355.8	2.00	-2.00	0.00
3,800.0	4.58	151.86	3,771.4	-370.8	162.9	-364.2	2.00	-2.00	0.00
3,900.0	2.58	151.86	3,871.2	-376.3	165.8	-369.5	2.00	-2.00	0.00
4,000.0	0.58	151.86	3,971.1	-378.8	167.1	-371.9	2.00	-2.00	0.00
4,028.9	0.00	0.00	4,000.0	-378.9	167.2	-372.0	2.00	-2.00	0.00
4,100.0	0.00	0.00	4,071.1	-378.9	167.2	-372.0	0.00	0.00	0.00
4,200.0	0.00	0.00	4,171.1	-378.9	167.2	-372.0	0.00	0.00	0.00
4,300.0	0.00	0.00	4,271.1	-378.9	167.2	-372.0	0.00	0.00	0.00
4,400.0	0.00	0.00	4,371.1	-378.9	167.2	-372.0	0.00	0.00	0.00
4,500.0	0.00	0.00	4,471.1	-378.9	167.2	-372.0	0.00	0.00	0.00
4,600.0	0.00	0.00	4,571.1	-378.9	167.2	-372.0	0.00	0.00	0.00

<b>Database:</b>	Landmark	<b>Local Co-ordinate Reference:</b>	Well Antelope 24-21-20HC
<b>Company:</b>	BONANZA CREEK ENERGY OPERATING	<b>TVD Reference:</b>	WELL @ 4678.0ft (RKB - 13')
<b>Project:</b>	SEC.20-T5N-R62W	<b>MD Reference:</b>	WELL @ 4678.0ft (RKB - 13')
<b>Site:</b>	Antelope J-20 Pad Sec.20-T5N-R62W	<b>North Reference:</b>	True
<b>Well:</b>	Antelope 24-21-20HC	<b>Survey Calculation Method:</b>	Minimum Curvature
<b>Wellbore:</b>	Wellbore #1		
<b>Design:</b>	Plan #2 (11-13-13)		

Planned Survey									
Measured Depth (ft)	Inclination (°)	Azimuth (°)	Vertical Depth (ft)	+N/-S (ft)	+E/-W (ft)	Vertical Section (ft)	Dogleg Rate (°/100ft)	Build Rate (°/100ft)	Turn Rate (°/100ft)
4,700.0	0.00	0.00	4,671.1	-378.9	167.2	-372.0	0.00	0.00	0.00
4,800.0	0.00	0.00	4,771.1	-378.9	167.2	-372.0	0.00	0.00	0.00
4,900.0	0.00	0.00	4,871.1	-378.9	167.2	-372.0	0.00	0.00	0.00
5,000.0	0.00	0.00	4,971.1	-378.9	167.2	-372.0	0.00	0.00	0.00
5,100.0	0.00	0.00	5,071.1	-378.9	167.2	-372.0	0.00	0.00	0.00
5,200.0	0.00	0.00	5,171.1	-378.9	167.2	-372.0	0.00	0.00	0.00
5,300.0	0.00	0.00	5,271.1	-378.9	167.2	-372.0	0.00	0.00	0.00
5,400.0	0.00	0.00	5,371.1	-378.9	167.2	-372.0	0.00	0.00	0.00
5,500.0	0.00	0.00	5,471.1	-378.9	167.2	-372.0	0.00	0.00	0.00
5,600.0	0.00	0.00	5,571.1	-378.9	167.2	-372.0	0.00	0.00	0.00
5,700.0	0.00	0.00	5,671.1	-378.9	167.2	-372.0	0.00	0.00	0.00
5,800.0	0.00	0.00	5,771.1	-378.9	167.2	-372.0	0.00	0.00	0.00
5,900.0	0.00	0.00	5,871.1	-378.9	167.2	-372.0	0.00	0.00	0.00
6,000.0	0.00	0.00	5,971.1	-378.9	167.2	-372.0	0.00	0.00	0.00
6,021.1	0.00	0.00	5,992.2	-378.9	167.2	-372.0	0.00	0.00	0.00
<b>KOP #2</b>									
6,100.0	8.68	0.07	6,070.8	-372.9	167.2	-366.1	11.00	11.00	0.00
6,200.0	19.68	0.07	6,167.6	-348.5	167.2	-341.6	11.00	11.00	0.00
6,300.0	30.68	0.07	6,258.0	-306.0	167.3	-299.2	11.00	11.00	0.00
6,400.0	41.68	0.07	6,338.6	-247.1	167.4	-240.3	11.00	11.00	0.00
6,500.0	52.68	0.07	6,406.5	-173.8	167.4	-167.1	11.00	11.00	0.00
6,600.0	63.68	0.07	6,459.1	-89.0	167.5	-82.3	11.00	11.00	0.00
6,700.0	74.68	0.07	6,494.6	4.3	167.6	10.9	11.00	11.00	0.00
6,702.9	75.00	0.07	6,495.4	7.2	167.6	13.7	11.00	11.00	0.00
6,800.0	75.00	0.07	6,520.5	100.9	167.8	107.4	0.00	0.00	0.00
6,802.9	75.00	0.07	6,521.3	103.8	167.8	110.3	0.00	0.00	0.00
6,843.8	79.49	0.07	6,530.3	143.6	167.8	150.0	11.00	11.00	0.00
<b>T1 531'FSL &amp; 1600'FWL</b>									
6,900.0	85.68	0.07	6,537.5	199.3	167.9	205.7	11.00	11.00	0.00
6,939.3	90.00	0.07	6,539.0	238.6	167.9	245.0	11.00	11.00	0.00
<b>End of Build - 7"</b>									
7,000.0	90.00	0.07	6,539.0	299.3	168.0	305.6	0.00	0.00	0.00
7,100.0	90.00	0.07	6,539.0	399.3	168.1	405.6	0.00	0.00	0.00
7,200.0	90.00	0.07	6,539.0	499.3	168.2	505.5	0.00	0.00	0.00
7,300.0	90.00	0.07	6,539.0	599.3	168.3	605.4	0.00	0.00	0.00
7,400.0	90.00	0.07	6,539.0	699.3	168.4	705.3	0.00	0.00	0.00
7,500.0	90.00	0.07	6,539.0	799.3	168.6	805.3	0.00	0.00	0.00
7,600.0	90.00	0.07	6,539.0	899.3	168.7	905.2	0.00	0.00	0.00
7,700.0	90.00	0.07	6,539.0	999.3	168.8	1,005.1	0.00	0.00	0.00
7,800.0	90.00	0.07	6,539.0	1,099.3	168.9	1,105.1	0.00	0.00	0.00
7,900.0	90.00	0.07	6,539.0	1,199.3	169.0	1,205.0	0.00	0.00	0.00
8,000.0	90.00	0.07	6,539.0	1,299.3	169.1	1,304.9	0.00	0.00	0.00
8,100.0	90.00	0.07	6,539.0	1,399.3	169.3	1,404.8	0.00	0.00	0.00
8,200.0	90.00	0.07	6,539.0	1,499.3	169.4	1,504.8	0.00	0.00	0.00
8,300.0	90.00	0.07	6,539.0	1,599.3	169.5	1,604.7	0.00	0.00	0.00
8,400.0	90.00	0.07	6,539.0	1,699.3	169.6	1,704.6	0.00	0.00	0.00
8,500.0	90.00	0.07	6,539.0	1,799.3	169.7	1,804.5	0.00	0.00	0.00
8,600.0	90.00	0.07	6,539.0	1,899.3	169.8	1,904.5	0.00	0.00	0.00
8,700.0	90.00	0.07	6,539.0	1,999.3	169.9	2,004.4	0.00	0.00	0.00
8,800.0	90.00	0.07	6,539.0	2,099.3	170.1	2,104.3	0.00	0.00	0.00
8,900.0	90.00	0.07	6,539.0	2,199.3	170.2	2,204.3	0.00	0.00	0.00
9,000.0	90.00	0.07	6,539.0	2,299.3	170.3	2,304.2	0.00	0.00	0.00
9,100.0	90.00	0.07	6,539.0	2,399.3	170.4	2,404.1	0.00	0.00	0.00

<b>Database:</b>	Landmark	<b>Local Co-ordinate Reference:</b>	Well Antelope 24-21-20HC
<b>Company:</b>	BONANZA CREEK ENERGY OPERATING	<b>TVD Reference:</b>	WELL @ 4678.0ft (RKB - 13')
<b>Project:</b>	SEC.20-T5N-R62W	<b>MD Reference:</b>	WELL @ 4678.0ft (RKB - 13')
<b>Site:</b>	Antelope J-20 Pad Sec.20-T5N-R62W	<b>North Reference:</b>	True
<b>Well:</b>	Antelope 24-21-20HC	<b>Survey Calculation Method:</b>	Minimum Curvature
<b>Wellbore:</b>	Wellbore #1		
<b>Design:</b>	Plan #2 (11-13-13)		

Planned Survey										
Measured Depth (ft)	Inclination (°)	Azimuth (°)	Vertical Depth (ft)	+N/-S (ft)	+E/-W (ft)	Vertical Section (ft)	Dogleg Rate (°/100ft)	Build Rate (°/100ft)	Turn Rate (°/100ft)	
9,200.0	90.00	0.07	6,539.0	2,499.3	170.5	2,504.0	0.00	0.00	0.00	
9,300.0	90.00	0.07	6,539.0	2,599.3	170.6	2,604.0	0.00	0.00	0.00	
9,400.0	90.00	0.07	6,539.0	2,699.3	170.8	2,703.9	0.00	0.00	0.00	
9,500.0	90.00	0.07	6,539.0	2,799.3	170.9	2,803.8	0.00	0.00	0.00	
9,600.0	90.00	0.07	6,539.0	2,899.3	171.0	2,903.7	0.00	0.00	0.00	
9,700.0	90.00	0.07	6,539.0	2,999.3	171.1	3,003.7	0.00	0.00	0.00	
9,800.0	90.00	0.07	6,539.0	3,099.3	171.2	3,103.6	0.00	0.00	0.00	
9,900.0	90.00	0.07	6,539.0	3,199.3	171.3	3,203.5	0.00	0.00	0.00	
10,000.0	90.00	0.07	6,539.0	3,299.3	171.4	3,303.5	0.00	0.00	0.00	
10,100.0	90.00	0.07	6,539.0	3,399.3	171.6	3,403.4	0.00	0.00	0.00	
10,200.0	90.00	0.07	6,539.0	3,499.3	171.7	3,503.3	0.00	0.00	0.00	
10,300.0	90.00	0.07	6,539.0	3,599.3	171.8	3,603.2	0.00	0.00	0.00	
10,400.0	90.00	0.07	6,539.0	3,699.3	171.9	3,703.2	0.00	0.00	0.00	
10,500.0	90.00	0.07	6,539.0	3,799.3	172.0	3,803.1	0.00	0.00	0.00	
10,600.0	90.00	0.07	6,539.0	3,899.3	172.1	3,903.0	0.00	0.00	0.00	
10,700.0	90.00	0.07	6,539.0	3,999.3	172.3	4,002.9	0.00	0.00	0.00	
10,800.0	90.00	0.07	6,539.0	4,099.3	172.4	4,102.9	0.00	0.00	0.00	
10,900.0	90.00	0.07	6,539.0	4,199.3	172.5	4,202.8	0.00	0.00	0.00	
11,000.0	90.00	0.07	6,539.0	4,299.3	172.6	4,302.7	0.00	0.00	0.00	
11,094.3	90.00	0.07	6,539.0	4,393.6	172.7	4,397.0	0.00	0.00	0.00	
BHL 470'FNL & 1576'FWL										

Targets										
Target Name	Dip Angle (°)	Dip Dir. (°)	TVD (ft)	+N/-S (ft)	+E/-W (ft)	Northing (ft)	Easting (ft)	Latitude	Longitude	
BHL 470'FNL & 1576'	0.00	0.00	6,539.0	4,393.6	172.7	1,387,348.18	3,320,061.52	40.390980	-104.350930	
- hit/miss target										
- plan hits target center										
- Point										
SHL 390'FSL & 1435'I	0.00	0.00	1.0	0.0	0.0	1,382,952.91	3,319,945.73	40.378920	-104.351550	
- plan hits target center										
- Point										
T1 531'FSL & 1600'FV	0.00	0.00	6,539.0	142.1	167.2	1,383,097.14	3,320,111.03	40.379310	-104.350950	
- plan misses target center by 8.9ft at 6843.8ft MD (6530.3 TVD, 143.6 N, 167.8 E)										
- Point										

Casing Points						
Measured Depth (ft)	Vertical Depth (ft)	Name	Casing Diameter (")	Hole Diameter (")		
6,939.3	6,539.0	7"	7	7-1/2		

<b>Database:</b>	Landmark	<b>Local Co-ordinate Reference:</b>	Well Antelope 24-21-20HC
<b>Company:</b>	BONANZA CREEK ENERGY OPERATING	<b>TVD Reference:</b>	WELL @ 4678.0ft (RKB - 13')
<b>Project:</b>	SEC.20-T5N-R62W	<b>MD Reference:</b>	WELL @ 4678.0ft (RKB - 13')
<b>Site:</b>	Antelope J-20 Pad Sec.20-T5N-R62W	<b>North Reference:</b>	True
<b>Well:</b>	Antelope 24-21-20HC	<b>Survey Calculation Method:</b>	Minimum Curvature
<b>Wellbore:</b>	Wellbore #1		
<b>Design:</b>	Plan #2 (11-13-13)		

Plan Annotations					
Measured Depth (ft)	Vertical Depth (ft)	Local Coordinates			
		+N/-S (ft)	+E/-W (ft)	Comment	
200.0	200.0	0.0	0.0	KOP #1	
6,021.1	5,992.2	-378.9	167.2	KOP #2	
6,939.3	6,539.0	238.6	167.9	End of Build	



# **BONANZA CREEK ENERGY OPERATING**

**SEC.20-T5N-R62W**

**Antelope J-20 Pad Sec.20-T5N-R62W**

**Antelope 24-21-20HC**

**Wellbore #1**

**Plan #2 (11-13-13)**

## **Anticollision Report**

**14 November, 2013**



<b>Company:</b>	BONANZA CREEK ENERGY OPERATING	<b>Local Co-ordinate Reference:</b>	Well Antelope 24-21-20HC
<b>Project:</b>	SEC.20-T5N-R62W	<b>TVD Reference:</b>	WELL @ 4678.0ft (RKB - 13')
<b>Reference Site:</b>	Antelope J-20 Pad Sec.20-T5N-R62W	<b>MD Reference:</b>	WELL @ 4678.0ft (RKB - 13')
<b>Site Error:</b>	0.0ft	<b>North Reference:</b>	True
<b>Reference Well:</b>	Antelope 24-21-20HC	<b>Survey Calculation Method:</b>	Minimum Curvature
<b>Well Error:</b>	0.0ft	<b>Output errors are at</b>	2.00 sigma
<b>Reference Wellbore</b>	Wellbore #1	<b>Database:</b>	Landmark
<b>Reference Design:</b>	Plan #2 (11-13-13)	<b>Offset TVD Reference:</b>	Offset Datum

<b>Reference</b>	Plan #2 (11-13-13)		
<b>Filter type:</b>	NO GLOBAL FILTER: Using user defined selection & filtering criteria		
<b>Interpolation Method:</b>	MD Interval 100.0ft	<b>Error Model:</b>	ISCWSA
<b>Depth Range:</b>	Unlimited	<b>Scan Method:</b>	Closest Approach 3D
<b>Results Limited by:</b>	Maximum center-center distance of 1,000.0ft	<b>Error Surface:</b>	Elliptical Conic
<b>Warning Levels Evaluated at:</b>	2.00 Sigma		

<b>Survey Tool Program</b>	<b>Date</b>	11/14/2013		
<b>From (ft)</b>	<b>To (ft)</b>	<b>Survey (Wellbore)</b>	<b>Tool Name</b>	<b>Description</b>
0.0	11,094.3	Plan #2 (11-13-13) (Wellbore #1)	MWD	MWD - Standard

Summary						
Site Name	Reference Measured Depth (ft)	Offset Measured Depth (ft)	Distance Between Centres (ft)	Distance Between Ellipses (ft)	Separation Factor	Warning
Antelope J-20 Pad Sec.20-T5N-R62W						
Antelope O34-K31-20HNB - Wellbore #1 - Plan #1 (11-13-13)	200.0	200.0	21.9	21.2	32.417	CC
Antelope O34-K31-20HNB - Wellbore #1 - Plan #1 (11-13-13)	909.3	906.9	24.2	20.4	6.420	ES
Antelope O34-K31-20HNB - Wellbore #1 - Plan #1 (11-13-13)	1,000.0	996.6	25.9	21.7	6.232	SF
Antelope J-F-20HZ (Exist) Pad Sec.20-T5N-R62W						
Antelope 11-20 (Exist) - Wellbore #1 - Wellbore #1	10,987.7	6,513.0	874.6	658.9	4.055	CC
Antelope 11-20 (Exist) - Wellbore #1 - Wellbore #1	11,000.0	6,513.0	874.6	658.7	4.051	ES
Antelope 11-20 (Exist) - Wellbore #1 - Wellbore #1	11,095.3	6,513.0	881.2	663.4	4.047	SF
Antelope 12-20 (Exist.) - Wellbore #1 - Wellbore #1	9,593.6	6,746.2	922.8	836.1	10.649	CC
Antelope 12-20 (Exist.) - Wellbore #1 - Wellbore #1	9,600.0	6,746.1	922.8	836.0	10.635	ES
Antelope 12-20 (Exist.) - Wellbore #1 - Wellbore #1	9,800.0	6,744.7	945.6	855.1	10.448	SF
Antelope 13-20 (Exist.) - Wellbore #1 - Wellbore #1	8,287.6	6,708.4	934.8	874.2	15.425	CC
Antelope 13-20 (Exist.) - Wellbore #1 - Wellbore #1	8,300.0	6,708.4	934.9	874.1	15.372	ES
Antelope 13-20 (Exist.) - Wellbore #1 - Wellbore #1	8,500.0	6,709.1	958.6	894.3	14.895	SF
Antelope 14-20 (Exist) - Wellbore #1 - Wellbore #1						Out of range
Antelope 21-20 (Exist.) - Wellbore #1 - Wellbore #1	10,920.9	6,697.6	425.4	325.3	4.248	CC, ES, SF
Antelope 22-20 (Exist.) - Wellbore #1 - Wellbore #1	9,580.0	6,872.4	362.0	272.1	4.027	CC, ES
Antelope 22-20 (Exist.) - Wellbore #1 - Wellbore #1	9,600.0	6,872.2	362.5	272.3	4.017	SF
Antelope 23-20 (Exist.) - Wellbore #1 - Wellbore #1	8,257.4	6,703.1	411.1	350.0	6.723	CC, ES
Antelope 23-20 (Exist.) - Wellbore #1 - Wellbore #1	8,300.0	6,703.2	413.3	351.4	6.678	SF
Antelope 24-20 (Exist.) - Wellbore #1 - Wellbore #1	6,971.0	6,382.0	317.6	191.1	2.510	CC
Antelope 24-20 (Exist.) - Wellbore #1 - Wellbore #1	7,000.0	6,382.0	317.7	190.6	2.499	ES, SF
Antelope A-20 (Exist.) - Wellbore #1 - Wellbore #1						Out of range
Antelope B-20 (Exist.) - Wellbore #1 - Wellbore #1						Out of range
Antelope G-20 (Exist) - Wellbore #1 - Wellbore #1	10,969.5	6,512.0	871.8	656.4	4.049	CC
Antelope G-20 (Exist) - Wellbore #1 - Wellbore #1	11,000.0	6,512.0	872.3	656.4	4.040	ES, SF
Antelope I-20 (Exist) - Wellbore #1 - Wellbore #1	6,974.3	6,527.0	227.7	81.0	1.552	CC, ES, SF
Antelope J-F-20HZ (Exist.) - Wellbore #1 - Wellbore #1	388.9	389.2	36.9	35.6	27.450	CC
Antelope J-F-20HZ (Exist.) - Wellbore #1 - Wellbore #1	400.0	400.2	36.9	35.5	26.527	ES
Antelope J-F-20HZ (Exist.) - Wellbore #1 - Wellbore #1	11,095.3	11,097.0	587.2	424.8	3.615	SF
Antelope O-K-20HZ (Exist.) - Wellbore #1 - Wellbore #1	307.4	308.8	16.6	15.5	14.864	CC, ES
Antelope O-K-20HZ (Exist.) - Wellbore #1 - Wellbore #1	11,095.3	11,027.0	588.2	425.4	3.614	SF

<b>Company:</b>	BONANZA CREEK ENERGY OPERATING	<b>Local Co-ordinate Reference:</b>	Well Antelope 24-21-20HC
<b>Project:</b>	SEC.20-T5N-R62W	<b>TVD Reference:</b>	WELL @ 4678.0ft (RKB - 13')
<b>Reference Site:</b>	Antelope J-20 Pad Sec.20-T5N-R62W	<b>MD Reference:</b>	WELL @ 4678.0ft (RKB - 13')
<b>Site Error:</b>	0.0ft	<b>North Reference:</b>	True
<b>Reference Well:</b>	Antelope 24-21-20HC	<b>Survey Calculation Method:</b>	Minimum Curvature
<b>Well Error:</b>	0.0ft	<b>Output errors are at</b>	2.00 sigma
<b>Reference Wellbore</b>	Wellbore #1	<b>Database:</b>	Landmark
<b>Reference Design:</b>	Plan #2 (11-13-13)	<b>Offset TVD Reference:</b>	Offset Datum

Offset Design Antelope J-20 Pad Sec.20-T5N-R62W - Antelope O34-K31-20HNB - Wellbore #1 - Plan #1 (11-13-13)														Offset Site Error:	0.0 ft
Survey Program: 0-MWID														Offset Well Error:	0.0 ft
Reference	Offset	Semi Major Axis		Distance		Minimum		Separation		Warning					
Measured Depth (ft)	Vertical Depth (ft)	Measured Depth (ft)	Vertical Depth (ft)	Reference (ft)	Offset (ft)	Highside Toolface (°)	Offset Wellbore Centre +N/-S (ft)	+E/-W (ft)	Between Centres (ft)	Between Ellipses (ft)	Minimum Separation (ft)	Separation Factor			
0.0	0.0	0.0	0.0	0.0	0.0	180.00	-21.9	0.0	21.9						
100.0	100.0	100.0	100.0	0.1	0.1	180.00	-21.9	0.0	21.9	21.6	0.22	97.251			
200.0	200.0	200.0	200.0	0.3	0.3	180.00	-21.9	0.0	21.9	21.2	0.67	32.417 CC			
227.7	227.7	227.7	227.7	0.4	0.4	-90.35	-21.9	0.0	21.9	21.1	0.80	27.464			
300.0	300.0	300.0	300.0	0.6	0.6	-94.56	-21.9	0.0	21.9	20.8	1.11	19.687			
400.0	399.8	399.8	399.8	0.8	0.8	-107.67	-21.9	0.0	22.9	21.4	1.56	14.685			
500.0	499.5	499.5	499.5	1.0	1.0	-116.12	-21.9	0.0	26.2	24.2	2.02	13.019			
600.0	599.3	599.3	599.3	1.2	1.2	-101.88	-21.9	0.0	28.5	26.1	2.44	11.700			
700.0	699.2	699.2	699.2	1.4	1.5	-77.61	-21.9	0.0	28.5	25.6	2.87	9.922			
800.0	798.9	798.9	798.9	1.7	1.7	-65.29	-21.9	0.0	26.2	22.9	3.31	7.911			
900.0	898.5	897.7	897.7	1.9	1.9	-69.73	-22.4	1.6	24.2	20.5	3.73	6.493			
909.3	907.7	906.9	906.9	1.9	1.9	-70.75	-22.5	1.9	24.2	20.4	3.77	6.420 ES			
1,000.0	997.8	996.6	996.4	2.1	2.1	-82.96	-23.9	6.4	25.9	21.7	4.16	6.232 SF			
1,100.0	1,096.8	1,095.4	1,094.9	2.4	2.3	-97.54	-26.4	14.5	32.0	27.4	4.62	6.928			
1,200.0	1,195.9	1,194.2	1,193.0	2.7	2.5	-103.25	-29.9	25.8	41.2	36.1	5.12	8.055			
1,300.0	1,294.9	1,292.8	1,290.3	3.0	2.8	-103.52	-34.5	40.4	52.4	46.7	5.67	9.235			
1,400.0	1,393.9	1,390.8	1,386.7	3.3	3.1	-101.13	-40.0	57.9	65.3	59.1	6.28	10.406			
1,500.0	1,493.0	1,488.2	1,481.6	3.6	3.5	-97.55	-46.4	78.5	80.3	73.4	6.93	11.599			
1,600.0	1,592.0	1,584.6	1,574.8	3.9	3.9	-93.61	-53.7	101.9	97.7	90.1	7.60	12.849			
1,700.0	1,691.0	1,682.0	1,668.4	4.3	4.4	-89.96	-61.8	127.7	117.0	108.7	8.29	14.112			
1,800.0	1,790.1	1,779.8	1,762.4	4.6	4.9	-87.30	-69.9	153.7	136.7	127.7	8.98	15.222			
1,900.0	1,889.1	1,877.7	1,856.4	4.9	5.4	-85.32	-78.0	179.7	156.6	147.0	9.67	16.193			
2,000.0	1,988.2	1,975.6	1,950.4	5.3	6.0	-83.78	-86.2	205.8	176.7	166.3	10.37	17.044			
2,100.0	2,087.2	2,073.4	2,044.3	5.6	6.5	-82.55	-94.3	231.8	196.8	185.8	11.06	17.793			
2,200.0	2,186.2	2,171.3	2,138.3	6.0	7.0	-81.56	-102.4	257.8	217.1	205.3	11.76	18.455			
2,300.0	2,285.3	2,269.2	2,232.3	6.3	7.6	-80.73	-110.5	283.8	237.4	224.9	12.46	19.044			
2,400.0	2,384.3	2,367.0	2,326.3	6.6	8.2	-80.04	-118.7	309.8	257.7	244.5	13.17	19.571			
2,500.0	2,483.3	2,464.9	2,420.3	7.0	8.7	-79.44	-126.8	335.8	278.0	264.2	13.87	20.044			
2,600.0	2,582.4	2,562.8	2,514.3	7.3	9.3	-78.93	-134.9	361.9	298.4	283.8	14.58	20.471			
2,700.0	2,681.4	2,660.6	2,608.3	7.7	9.9	-78.48	-143.1	387.9	318.8	303.5	15.29	20.858			
2,800.0	2,780.4	2,758.5	2,702.3	8.0	10.4	-78.09	-151.2	413.9	339.2	323.2	15.99	21.210			
2,900.0	2,879.5	2,856.4	2,796.3	8.4	11.0	-77.74	-159.3	439.9	359.7	343.0	16.70	21.532			
3,000.0	2,978.5	2,954.3	2,890.3	8.7	11.6	-77.43	-167.4	465.9	380.1	362.7	17.41	21.827			
3,100.0	3,077.5	3,052.1	2,984.3	9.1	12.2	-77.15	-175.6	492.0	400.6	382.4	18.13	22.098			
3,200.0	3,176.6	3,150.0	3,078.3	9.4	12.7	-76.89	-183.7	518.0	421.0	402.2	18.84	22.348			
3,300.0	3,275.6	3,247.9	3,172.3	9.8	13.3	-76.66	-191.8	544.0	441.5	421.9	19.55	22.580			
3,400.0	3,374.6	3,345.7	3,266.3	10.1	13.9	-76.46	-200.0	570.0	462.0	441.7	20.27	22.795			
3,500.0	3,473.7	3,443.6	3,360.3	10.5	14.5	-76.26	-208.1	596.0	482.4	461.4	20.98	22.995			
3,600.0	3,572.7	3,541.5	3,454.3	10.8	15.1	-76.09	-216.2	622.0	502.9	481.2	21.69	23.182			
3,700.0	3,671.9	3,639.3	3,548.2	11.1	15.6	-76.12	-224.4	648.0	523.6	501.2	22.38	23.393			
3,800.0	3,771.4	3,736.8	3,641.9	11.3	16.2	-75.97	-232.5	674.0	545.1	522.1	22.95	23.753			
3,900.0	3,871.2	3,833.9	3,735.1	11.5	16.8	-75.53	-240.5	699.8	567.5	544.1	23.44	24.207			
4,000.0	3,971.1	3,930.4	3,827.9	11.7	17.4	-74.85	-248.5	725.5	590.9	567.1	23.87	24.760			
4,100.0	4,071.1	4,026.5	3,920.1	11.8	17.9	-78.16	-256.5	751.0	615.3	591.1	24.23	25.398			
4,200.0	4,171.1	4,122.5	4,012.4	11.9	18.5	-79.37	-264.5	776.5	640.0	615.4	24.55	26.072			
4,300.0	4,271.1	4,218.6	4,104.6	12.1	19.1	-80.48	-272.5	802.1	664.9	640.0	24.87	26.734			
4,400.0	4,371.1	4,314.6	4,196.9	12.2	19.7	-81.52	-280.5	827.6	690.1	664.9	25.20	27.381			
4,500.0	4,471.1	4,410.7	4,289.1	12.4	20.2	-82.49	-288.4	853.1	715.4	689.9	25.54	28.012			
4,600.0	4,571.1	4,506.7	4,381.3	12.5	20.8	-83.39	-296.4	878.7	740.9	715.1	25.88	28.628			
4,700.0	4,671.1	4,602.8	4,473.6	12.7	21.4	-84.23	-304.4	904.2	766.6	740.4	26.23	29.227			
4,800.0	4,771.1	4,698.8	4,565.8	12.8	21.9	-85.01	-312.4	929.7	792.5	765.9	26.58	29.809			
4,900.0	4,871.1	4,794.8	4,658.1	13.0	22.5	-85.75	-320.3	955.3	818.4	791.5	26.94	30.375			

CC - Min centre to center distance or convergent point, SF - min separation factor, ES - min ellipse separation

<b>Company:</b>	BONANZA CREEK ENERGY OPERATING	<b>Local Co-ordinate Reference:</b>	Well Antelope 24-21-20HC
<b>Project:</b>	SEC.20-T5N-R62W	<b>TVD Reference:</b>	WELL @ 4678.0ft (RKB - 13')
<b>Reference Site:</b>	Antelope J-20 Pad Sec.20-T5N-R62W	<b>MD Reference:</b>	WELL @ 4678.0ft (RKB - 13')
<b>Site Error:</b>	0.0ft	<b>North Reference:</b>	True
<b>Reference Well:</b>	Antelope 24-21-20HC	<b>Survey Calculation Method:</b>	Minimum Curvature
<b>Well Error:</b>	0.0ft	<b>Output errors are at</b>	2.00 sigma
<b>Reference Wellbore</b>	Wellbore #1	<b>Database:</b>	Landmark
<b>Reference Design:</b>	Plan #2 (11-13-13)	<b>Offset TVD Reference:</b>	Offset Datum

Offset Design												Offset Site Error:	0.0 ft
Survey Program: 0-MWD												Offset Well Error:	0.0 ft
Reference		Offset		Semi Major Axis			Distance						
Measured Depth (ft)	Vertical Depth (ft)	Measured Depth (ft)	Vertical Depth (ft)	Reference (ft)	Offset (ft)	Highside Toolface (°)	Offset Wellbore Centre +N/-S (ft)	+E/-W (ft)	Between Centres (ft)	Between Ellipses (ft)	Minimum Separation (ft)	Separation Factor	Warning
5,000.0	4,971.1	4,890.9	4,750.3	13.1	23.1	86.44	-328.3	980.8	844.5	817.2	27.31	30.924	
5,100.0	5,071.1	4,986.9	4,842.6	13.3	23.7	87.09	-336.3	1,006.3	870.7	843.1	27.68	31.456	
5,200.0	5,171.1	5,097.3	4,948.7	13.4	24.3	87.79	-345.4	1,035.3	896.8	868.7	28.07	31.946	
5,300.0	5,271.1	5,236.1	5,083.4	13.6	24.8	88.49	-355.2	1,066.9	919.4	890.9	28.45	32.313	
5,400.0	5,371.1	5,377.9	5,222.6	13.8	25.3	89.04	-363.3	1,092.8	937.5	908.7	28.84	32.506	
5,500.0	5,471.1	5,522.1	5,365.4	13.9	25.7	89.42	-369.4	1,112.3	951.0	921.8	29.23	32.534	
5,600.0	5,571.1	5,668.1	5,510.7	14.1	26.0	89.67	-373.4	1,125.0	959.7	930.1	29.62	32.405	
5,700.0	5,671.1	5,815.0	5,657.5	14.3	26.2	89.78	-375.2	1,130.7	963.6	933.6	30.00	32.122	
5,800.0	5,771.1	5,928.7	5,771.1	14.4	26.3	89.78	-375.3	1,131.0	963.8	933.5	30.34	31.769	
5,853.1	5,824.2	5,981.7	5,824.2	14.5	26.4	89.78	-375.3	1,131.0	963.8	933.3	30.51	31.590	
5,900.0	5,871.1	6,027.9	5,870.4	14.6	26.4	89.74	-374.4	1,131.0	963.8	933.2	30.66	31.435	
6,000.0	5,971.1	6,123.2	5,964.5	14.8	26.4	88.90	-360.5	1,131.1	964.1	933.1	31.04	31.064	
6,100.0	6,070.8	6,212.6	6,049.1	14.9	26.4	87.34	-332.0	1,131.4	965.3	933.9	31.40	30.745	
6,200.0	6,167.6	6,300.0	6,126.0	14.9	26.4	85.87	-290.6	1,131.8	967.2	935.6	31.56	30.648	
6,300.0	6,258.0	6,381.9	6,190.7	14.8	26.3	84.58	-240.6	1,132.3	969.5	938.0	31.52	30.761	
6,400.0	6,338.6	6,463.1	6,246.5	14.7	26.2	83.44	-181.7	1,132.8	972.0	940.7	31.36	31.000	
6,500.0	6,406.5	6,542.8	6,291.6	14.6	26.1	82.51	-116.1	1,133.4	974.5	943.3	31.19	31.243	
6,600.0	6,459.1	6,621.4	6,325.8	14.6	26.1	81.80	-45.4	1,134.1	976.7	945.5	31.17	31.330	
6,700.0	6,494.6	6,704.5	6,350.6	14.6	26.0	81.36	33.9	1,134.8	978.3	946.8	31.46	31.096	
6,800.0	6,520.5	6,800.0	6,374.9	15.0	26.0	81.34	126.2	1,135.7	979.1	946.9	32.24	30.372	
6,900.0	6,537.5	6,876.7	6,386.4	15.6	26.0	81.14	202.0	1,136.4	980.2	946.9	33.30	29.432	
7,000.0	6,539.0	6,965.0	6,388.0	16.4	26.2	81.14	290.3	1,137.2	980.9	946.2	34.78	28.204	
7,100.0	6,539.0	7,065.0	6,388.0	17.4	26.4	81.15	390.2	1,138.1	981.8	945.1	36.64	26.797	
7,200.0	6,539.0	7,165.0	6,388.0	18.5	26.8	81.16	490.2	1,139.1	982.6	943.8	38.77	25.342	
7,300.0	6,539.0	7,265.0	6,388.0	19.8	27.4	81.17	590.2	1,140.0	983.4	942.2	41.15	23.898	
7,400.0	6,539.0	7,365.0	6,388.0	21.1	28.1	81.17	690.2	1,140.9	984.2	940.4	43.73	22.507	
7,500.0	6,539.0	7,465.0	6,388.0	22.6	29.0	81.18	790.2	1,141.8	985.0	938.5	46.47	21.194	
7,600.0	6,539.0	7,565.0	6,388.0	24.1	30.0	81.19	890.2	1,142.8	985.8	936.4	49.36	19.971	
7,700.0	6,539.0	7,665.0	6,388.0	25.6	31.2	81.20	990.2	1,143.7	986.6	934.2	52.36	18.842	
7,800.0	6,539.0	7,765.0	6,388.0	27.2	32.4	81.20	1,090.2	1,144.6	987.4	931.9	55.46	17.803	
7,900.0	6,539.0	7,865.0	6,388.0	28.9	33.7	81.21	1,190.2	1,145.6	988.2	929.5	58.65	16.850	
8,000.0	6,539.0	7,965.0	6,388.0	30.5	35.1	81.22	1,290.2	1,146.5	989.0	927.1	61.90	15.978	
8,100.0	6,539.0	8,065.0	6,388.0	32.2	36.6	81.22	1,390.2	1,147.4	989.8	924.6	65.21	15.179	
8,200.0	6,539.0	8,165.0	6,388.0	34.0	38.1	81.23	1,490.2	1,148.4	990.6	922.0	68.57	14.446	
8,300.0	6,539.0	8,265.0	6,388.0	35.7	39.6	81.24	1,590.2	1,149.3	991.4	919.4	71.98	13.774	
8,400.0	6,539.0	8,365.0	6,388.0	37.5	41.2	81.25	1,690.1	1,150.2	992.2	916.8	75.42	13.155	
8,500.0	6,539.0	8,465.0	6,388.0	39.2	42.8	81.25	1,790.1	1,151.2	993.0	914.1	78.90	12.586	
8,600.0	6,539.0	8,565.0	6,388.0	41.0	44.5	81.26	1,890.1	1,152.1	993.8	911.4	82.41	12.060	
8,700.0	6,539.0	8,665.0	6,388.0	42.8	46.1	81.27	1,990.1	1,153.0	994.6	908.7	85.94	11.574	
8,800.0	6,539.0	8,765.0	6,388.0	44.6	47.8	81.27	2,090.1	1,153.9	995.4	906.0	89.49	11.123	
8,900.0	6,539.0	8,865.0	6,388.0	46.5	49.5	81.28	2,190.1	1,154.9	996.3	903.2	93.06	10.705	
9,000.0	6,539.0	8,965.0	6,388.0	48.3	51.2	81.29	2,290.1	1,155.8	997.1	900.4	96.65	10.316	
9,100.0	6,539.0	9,065.0	6,388.0	50.1	52.9	81.30	2,390.1	1,156.7	997.9	897.6	100.26	9.953	
9,200.0	6,539.0	9,165.0	6,388.0	52.0	54.7	81.30	2,490.1	1,157.7	998.7	894.8	103.88	9.614	
9,300.0	6,539.0	9,264.9	6,388.0	53.8	56.4	81.31	2,590.1	1,158.6	999.5	892.0	107.51	9.296	

<b>Company:</b>	BONANZA CREEK ENERGY OPERATING	<b>Local Co-ordinate Reference:</b>	Well Antelope 24-21-20HC
<b>Project:</b>	SEC.20-T5N-R62W	<b>TVD Reference:</b>	WELL @ 4678.0ft (RKB - 13')
<b>Reference Site:</b>	Antelope J-20 Pad Sec.20-T5N-R62W	<b>MD Reference:</b>	WELL @ 4678.0ft (RKB - 13')
<b>Site Error:</b>	0.0ft	<b>North Reference:</b>	True
<b>Reference Well:</b>	Antelope 24-21-20HC	<b>Survey Calculation Method:</b>	Minimum Curvature
<b>Well Error:</b>	0.0ft	<b>Output errors are at</b>	2.00 sigma
<b>Reference Wellbore</b>	Wellbore #1	<b>Database:</b>	Landmark
<b>Reference Design:</b>	Plan #2 (11-13-13)	<b>Offset TVD Reference:</b>	Offset Datum

<b>Offset Design</b>												<b>Offset Site Error:</b>	0.0 ft
Antelope J-F-20HZ (Exist) Pad Sec.20-T5N-R62W - Antelope 11-20 (Exist) - Wellbore #1 - Wellbore #1												<b>Offset Well Error:</b>	0.0 ft
Survey Program: 7500-UNKNOWN													
Reference		Offset		Semi Major Axis			Distance						
Measured Depth (ft)	Vertical Depth (ft)	Measured Depth (ft)	Vertical Depth (ft)	Reference (ft)	Offset (ft)	Highside Toolface (°)	Offset Wellbore Centre +N/-S (ft)	+E/-W (ft)	Between Centres (ft)	Between Ellipses (ft)	Minimum Separation (ft)	Separation Factor	Warning
10,600.0	6,539.0	6,513.0	6,513.0	78.1	130.3	-90.00	4,288.0	-702.0	956.6	748.3	208.35	4.591	
10,700.0	6,539.0	6,513.0	6,513.0	80.0	130.3	-90.00	4,288.0	-702.0	920.7	710.4	210.24	4.379	
10,800.0	6,539.0	6,513.0	6,513.0	81.9	130.3	-90.00	4,288.0	-702.0	894.5	682.3	212.13	4.217	
10,900.0	6,539.0	6,513.0	6,513.0	83.8	130.3	-90.00	4,288.0	-702.0	878.9	664.9	214.02	4.107	
10,987.7	6,539.0	6,513.0	6,513.0	85.4	130.3	-90.00	4,288.0	-702.0	874.6	658.9	215.68	4.055 CC	
11,000.0	6,539.0	6,513.0	6,513.0	85.7	130.3	-90.00	4,288.0	-702.0	874.6	658.7	215.91	4.051 ES	
11,095.3	6,539.0	6,513.0	6,513.0	87.5	130.3	-90.00	4,288.0	-702.0	881.2	663.4	217.71	4.047 SF	

<b>Company:</b>	BONANZA CREEK ENERGY OPERATING	<b>Local Co-ordinate Reference:</b>	Well Antelope 24-21-20HC
<b>Project:</b>	SEC.20-T5N-R62W	<b>TVD Reference:</b>	WELL @ 4678.0ft (RKB - 13')
<b>Reference Site:</b>	Antelope J-20 Pad Sec.20-T5N-R62W	<b>MD Reference:</b>	WELL @ 4678.0ft (RKB - 13')
<b>Site Error:</b>	0.0ft	<b>North Reference:</b>	True
<b>Reference Well:</b>	Antelope 24-21-20HC	<b>Survey Calculation Method:</b>	Minimum Curvature
<b>Well Error:</b>	0.0ft	<b>Output errors are at</b>	2.00 sigma
<b>Reference Wellbore</b>	Wellbore #1	<b>Database:</b>	Landmark
<b>Reference Design:</b>	Plan #2 (11-13-13)	<b>Offset TVD Reference:</b>	Offset Datum

<b>Offset Design</b>												<b>Offset Site Error:</b>	0.0 ft
Antelope J-F-20HZ (Exist) Pad Sec.20-T5N-R62W - Antelope 12-20 (Exist.) - Wellbore #1 - Wellbore #1												<b>Offset Well Error:</b>	0.0 ft
Survey Program: 493-MWD													
Reference		Offset		Semi Major Axis			Distance						
Measured Depth (ft)	Vertical Depth (ft)	Measured Depth (ft)	Vertical Depth (ft)	Reference (ft)	Offset (ft)	Highside Toolface (°)	Offset Wellbore Centre +N/-S (ft)	+E/-W (ft)	Between Centres (ft)	Between Ellipses (ft)	Minimum Separation (ft)	Separation Factor	Warning
9,300.0	6,539.0	6,748.3	6,555.2	53.8	27.5	-91.13	2,893.9	-751.6	968.3	887.1	81.20	11.925	
9,400.0	6,539.0	6,747.6	6,554.4	55.6	27.5	-91.08	2,893.9	-751.6	942.9	859.8	83.06	11.352	
9,500.0	6,539.0	6,746.8	6,553.7	57.5	27.5	-91.04	2,893.9	-751.6	927.5	842.6	84.91	10.923	
9,593.6	6,539.0	6,746.2	6,553.0	59.2	27.5	-91.00	2,893.9	-751.7	922.8	836.1	86.65	10.649 CC	
9,600.0	6,539.0	6,746.1	6,553.0	59.4	27.5	-90.99	2,893.9	-751.7	922.8	836.0	86.77	10.635 ES	
9,700.0	6,539.0	6,745.4	6,552.3	61.2	27.5	-90.95	2,893.9	-751.7	928.9	840.3	88.63	10.480	
9,800.0	6,539.0	6,744.7	6,551.6	63.1	27.5	-90.90	2,893.9	-751.7	945.6	855.1	90.50	10.448 SF	
9,900.0	6,539.0	6,744.0	6,550.8	65.0	27.5	-90.86	2,893.9	-751.7	972.3	879.9	92.37	10.526	

<b>Company:</b>	BONANZA CREEK ENERGY OPERATING	<b>Local Co-ordinate Reference:</b>	Well Antelope 24-21-20HC
<b>Project:</b>	SEC.20-T5N-R62W	<b>TVD Reference:</b>	WELL @ 4678.0ft (RKB - 13')
<b>Reference Site:</b>	Antelope J-20 Pad Sec.20-T5N-R62W	<b>MD Reference:</b>	WELL @ 4678.0ft (RKB - 13')
<b>Site Error:</b>	0.0ft	<b>North Reference:</b>	True
<b>Reference Well:</b>	Antelope 24-21-20HC	<b>Survey Calculation Method:</b>	Minimum Curvature
<b>Well Error:</b>	0.0ft	<b>Output errors are at</b>	2.00 sigma
<b>Reference Wellbore</b>	Wellbore #1	<b>Database:</b>	Landmark
<b>Reference Design:</b>	Plan #2 (11-13-13)	<b>Offset TVD Reference:</b>	Offset Datum

<b>Offset Design</b>												<b>Offset Site Error:</b>	0.0 ft
Antelope J-F-20HZ (Exist) Pad Sec.20-T5N-R62W - Antelope 13-20 (Exist.) - Wellbore #1 - Wellbore #1												<b>Offset Well Error:</b>	0.0 ft
Survey Program: 499-MWD													
Reference		Offset		Semi Major Axis			Distance						
Measured Depth (ft)	Vertical Depth (ft)	Measured Depth (ft)	Vertical Depth (ft)	Reference (ft)	Offset (ft)	Highside Toolface (°)	Offset Wellbore Centre +N/-S (ft)	+E/-W (ft)	Between Centres (ft)	Between Ellipses (ft)	Minimum Separation (ft)	Separation Factor	Warning
8,000.0	6,539.0	6,707.4	6,552.7	30.5	25.4	-90.23	1,588.0	-765.3	978.1	922.4	55.64	17.577	
8,100.0	6,539.0	6,707.8	6,553.0	32.2	25.4	-90.25	1,588.0	-765.3	953.4	896.1	57.35	16.626	
8,200.0	6,539.0	6,708.1	6,553.3	34.0	25.4	-90.27	1,588.0	-765.3	938.9	879.8	59.07	15.894	
8,287.6	6,539.0	6,708.4	6,553.6	35.5	25.4	-90.28	1,588.0	-765.3	934.8	874.2	60.60	15.425 CC	
8,300.0	6,539.0	6,708.4	6,553.7	35.7	25.4	-90.29	1,588.0	-765.3	934.9	874.1	60.82	15.372 ES	
8,400.0	6,539.0	6,708.7	6,554.0	37.5	25.4	-90.31	1,588.0	-765.3	941.5	879.0	62.58	15.045	
8,500.0	6,539.0	6,709.1	6,554.3	39.2	25.4	-90.33	1,588.0	-765.3	958.6	894.3	64.36	14.895 SF	
8,600.0	6,539.0	6,709.4	6,554.6	41.0	25.4	-90.35	1,588.0	-765.3	985.6	919.5	66.15	14.900	

<b>Company:</b>	BONANZA CREEK ENERGY OPERATING	<b>Local Co-ordinate Reference:</b>	Well Antelope 24-21-20HC
<b>Project:</b>	SEC.20-T5N-R62W	<b>TVD Reference:</b>	WELL @ 4678.0ft (RKB - 13')
<b>Reference Site:</b>	Antelope J-20 Pad Sec.20-T5N-R62W	<b>MD Reference:</b>	WELL @ 4678.0ft (RKB - 13')
<b>Site Error:</b>	0.0ft	<b>North Reference:</b>	True
<b>Reference Well:</b>	Antelope 24-21-20HC	<b>Survey Calculation Method:</b>	Minimum Curvature
<b>Well Error:</b>	0.0ft	<b>Output errors are at</b>	2.00 sigma
<b>Reference Wellbore</b>	Wellbore #1	<b>Database:</b>	Landmark
<b>Reference Design:</b>	Plan #2 (11-13-13)	<b>Offset TVD Reference:</b>	Offset Datum

<b>Offset Design</b>												<b>Offset Site Error:</b>	0.0 ft
Antelope J-F-20HZ (Exist) Pad Sec.20-T5N-R62W - Antelope 21-20 (Exist.) - Wellbore #1 - Wellbore #1												<b>Offset Well Error:</b>	0.0 ft
Survey Program: 530-MWD													
Reference		Offset		Semi Major Axis			Distance						
Measured Depth (ft)	Vertical Depth (ft)	Measured Depth (ft)	Vertical Depth (ft)	Reference (ft)	Offset (ft)	Highside Toolface (°)	Offset Wellbore Centre +N/-S (ft)	+E/-W (ft)	Between Centres (ft)	Between Ellipses (ft)	Minimum Separation (ft)	Separation Factor	Warning
10,100.0	6,539.0	6,698.5	6,518.3	68.7	27.8	89.50	4,219.7	597.9	924.6	840.0	84.67	10.921	
10,200.0	6,539.0	6,698.4	6,518.2	70.6	27.8	89.49	4,219.7	597.9	837.1	750.6	86.55	9.672	
10,300.0	6,539.0	6,698.3	6,518.1	72.5	27.8	89.47	4,219.7	597.9	752.7	664.3	88.43	8.512	
10,400.0	6,539.0	6,698.2	6,518.0	74.4	27.8	89.46	4,219.7	597.9	672.6	582.3	90.31	7.447	
10,500.0	6,539.0	6,698.1	6,517.9	76.2	27.8	89.44	4,219.7	597.9	598.5	506.3	92.20	6.491	
10,600.0	6,539.0	6,698.0	6,517.8	78.1	27.8	89.43	4,219.7	597.9	532.9	438.8	94.08	5.664	
10,700.0	6,539.0	6,697.9	6,517.7	80.0	27.8	89.42	4,219.7	597.9	479.4	383.4	95.97	4.995	
10,800.0	6,539.0	6,697.8	6,517.5	81.9	27.8	89.40	4,219.7	597.9	442.3	344.4	97.86	4.520	
10,900.0	6,539.0	6,697.7	6,517.4	83.8	27.8	89.39	4,219.7	597.9	426.0	326.2	99.75	4.270	
10,920.9	6,539.0	6,697.6	6,517.4	84.2	27.8	89.38	4,219.7	597.9	425.4	325.3	100.15	4.248	CC, ES, SF
11,000.0	6,539.0	6,697.6	6,517.3	85.7	27.8	89.37	4,219.7	597.9	432.7	331.1	101.65	4.257	
11,095.3	6,539.0	6,697.4	6,517.2	87.5	27.8	89.36	4,219.7	597.9	459.8	356.3	103.45	4.445	

<b>Company:</b>	BONANZA CREEK ENERGY OPERATING	<b>Local Co-ordinate Reference:</b>	Well Antelope 24-21-20HC
<b>Project:</b>	SEC.20-T5N-R62W	<b>TVD Reference:</b>	WELL @ 4678.0ft (RKB - 13')
<b>Reference Site:</b>	Antelope J-20 Pad Sec.20-T5N-R62W	<b>MD Reference:</b>	WELL @ 4678.0ft (RKB - 13')
<b>Site Error:</b>	0.0ft	<b>North Reference:</b>	True
<b>Reference Well:</b>	Antelope 24-21-20HC	<b>Survey Calculation Method:</b>	Minimum Curvature
<b>Well Error:</b>	0.0ft	<b>Output errors are at</b>	2.00 sigma
<b>Reference Wellbore</b>	Wellbore #1	<b>Database:</b>	Landmark
<b>Reference Design:</b>	Plan #2 (11-13-13)	<b>Offset TVD Reference:</b>	Offset Datum

Offset Design		Antelope J-F-20HZ (Exist) Pad Sec.20-T5N-R62W - Antelope 22-20 (Exist.) - Wellbore #1 - Wellbore #1										Offset Site Error:		0.0 ft			
Survey Program: 530-MWD														Offset Well Error:		0.0 ft	
Reference		Offset		Semi Major Axis			Distance							Warning			
Measured Depth (ft)	Vertical Depth (ft)	Measured Depth (ft)	Vertical Depth (ft)	Reference (ft)	Offset (ft)	Highside Toolface (°)	Offset Wellbore Centre +N/-S (ft)	+E/-W (ft)	Between Centres (ft)	Between Ellipses (ft)	Minimum Separation (ft)	Separation Factor					
8,700.0	6,539.0	6,880.7	6,522.6	42.8	37.7	90.10	2,878.8	533.0	951.5	877.8	73.68	12.915					
8,800.0	6,539.0	6,879.8	6,521.7	44.6	37.7	89.96	2,878.8	533.0	859.9	784.4	75.49	11.390					
8,900.0	6,539.0	6,878.9	6,520.8	46.5	37.7	89.82	2,878.8	533.0	770.3	693.0	77.32	9.963					
9,000.0	6,539.0	6,878.0	6,519.9	48.3	37.7	89.67	2,878.8	533.0	683.7	604.5	79.15	8.637					
9,100.0	6,539.0	6,877.1	6,519.0	50.1	37.7	89.52	2,878.8	533.0	601.2	520.2	80.99	7.423					
9,200.0	6,539.0	6,876.1	6,518.0	52.0	37.7	89.37	2,878.8	533.0	524.8	442.0	82.84	6.335					
9,300.0	6,539.0	6,875.2	6,517.1	53.8	37.7	89.22	2,878.8	532.9	457.6	373.0	84.69	5.404					
9,400.0	6,539.0	6,874.2	6,516.1	55.6	37.7	89.07	2,878.8	532.9	404.3	317.7	86.54	4.671					
9,500.0	6,539.0	6,873.2	6,515.1	57.5	37.7	88.91	2,878.8	532.9	370.7	282.3	88.40	4.194					
9,580.0	6,539.0	6,872.4	6,514.3	59.0	37.7	88.79	2,878.9	532.9	362.0	272.1	89.89	4.027 CC, ES					
9,600.0	6,539.0	6,872.2	6,514.1	59.4	37.7	88.75	2,878.9	532.9	362.5	272.3	90.26	4.017 SF					
9,700.0	6,539.0	6,871.2	6,513.1	61.2	37.7	88.59	2,878.9	532.9	381.4	289.2	92.13	4.139					
9,800.0	6,539.0	6,870.2	6,512.1	63.1	37.7	88.43	2,878.9	532.8	423.6	329.6	94.00	4.506					
9,900.0	6,539.0	6,869.1	6,511.0	65.0	37.7	88.26	2,878.9	532.8	483.1	387.3	95.87	5.040					
10,000.0	6,539.0	6,868.0	6,510.0	66.8	37.7	88.09	2,878.9	532.8	554.5	456.7	97.74	5.673					
10,100.0	6,539.0	6,866.9	6,508.9	68.7	37.7	87.92	2,878.9	532.8	633.6	534.0	99.61	6.360					
10,200.0	6,539.0	6,865.8	6,507.8	70.6	37.7	87.75	2,878.9	532.7	717.9	616.4	101.49	7.074					
10,300.0	6,539.0	6,864.7	6,506.7	72.5	37.7	87.57	2,878.9	532.7	805.8	702.5	103.36	7.796					
10,400.0	6,539.0	6,863.6	6,505.5	74.4	37.7	87.39	2,878.9	532.7	896.3	791.1	105.24	8.517					
10,500.0	6,539.0	6,862.4	6,504.4	76.2	37.7	87.21	2,879.0	532.7	988.6	881.5	107.12	9.229					



Antelope J-F-20HZ (Exist) Pad Sec.20-T5N-R62W - Antelope 23-20 (Exist.) - Wellbore #1 - Wellbore #1												Offset Site Error:	0.0 ft
Survey Program: 499-MWD												Offset Well Error:	0.0 ft
Reference		Offset		Semi Major Axis			Distance						Warning
Measured Depth	Vertical Depth	Measured Depth	Vertical Depth	Reference	Offset	Highside Toolface	Offset Wellbore Centre		Between Centres	Between Ellipses	Minimum Separation	Separation Factor	
(ft)	(ft)	(ft)	(ft)	(ft)	(ft)	(°)	+N/-S (ft)	+E/-W (ft)	(ft)	(ft)	(ft)		
0.0	0.0	0.0	0.0	0.0	0.0	57.51	273.2	429.1	508.7				
100.0	100.0	93.7	93.7	0.1	0.1	57.51	273.3	429.1	508.8	508.6	0.22	2,331.294	
200.0	200.0	192.3	192.3	0.3	0.2	57.50	273.6	429.5	509.2	508.6	0.55	918.730	
300.0	300.0	290.8	290.8	0.6	0.3	147.58	274.0	430.0	511.3	510.4	0.88	579.130	
400.0	399.8	389.3	389.2	0.8	0.4	147.81	274.6	430.7	516.7	515.5	1.22	423.064	
500.0	499.5	487.4	487.4	1.0	0.5	156.71	275.3	431.6	524.8	523.2	1.56	336.842	
600.0	599.3	579.2	579.2	1.2	0.7	-176.40	277.4	432.5	533.1	531.1	1.94	274.789	
700.0	699.2	665.0	664.7	1.4	0.9	-141.57	282.8	433.2	542.2	539.9	2.34	232.220	
800.0	798.9	745.7	745.0	1.7	1.2	-117.24	291.6	434.3	553.3	550.6	2.75	201.535	
900.0	898.5	825.5	823.7	1.9	1.4	-104.91	304.0	436.0	567.0	563.9	3.19	177.766	
1,000.0	997.8	901.2	898.0	2.1	1.7	-98.86	319.1	437.9	583.6	579.9	3.67	159.126	
1,100.0	1,096.8	969.0	963.7	2.4	2.0	-100.17	335.4	440.7	604.6	600.5	4.16	145.216	
1,200.0	1,195.9	1,053.2	1,044.3	2.7	2.4	-102.75	359.2	444.0	629.7	624.9	4.75	132.469	
1,300.0	1,294.9	1,143.0	1,129.8	3.0	2.8	-105.54	386.8	446.5	657.1	651.8	5.35	122.906	
1,400.0	1,393.9	1,238.9	1,221.2	3.3	3.3	-108.23	415.7	449.4	685.7	679.8	5.93	115.674	
1,500.0	1,493.0	1,338.4	1,316.3	3.6	3.8	-110.75	444.4	452.2	714.7	708.2	6.51	109.823	
1,600.0	1,592.0	1,415.5	1,390.1	3.9	4.2	-112.59	467.1	454.4	745.0	738.0	7.04	105.772	
1,700.0	1,691.0	1,506.6	1,476.6	4.3	4.7	-114.68	495.3	456.9	777.6	770.0	7.62	102.055	
1,800.0	1,790.1	1,608.3	1,573.6	4.6	5.3	-116.84	526.0	459.0	810.2	802.0	8.20	98.803	
1,900.0	1,889.1	1,700.0	1,661.2	4.9	5.8	-118.62	553.0	460.6	842.7	834.0	8.74	96.396	
2,000.0	1,988.2	1,804.7	1,761.5	5.3	6.3	-120.45	583.0	462.9	875.6	866.3	9.31	94.091	
2,100.0	2,087.2	1,883.8	1,837.4	5.6	6.8	-121.73	605.3	464.7	908.6	898.8	9.80	92.682	
2,200.0	2,186.2	1,985.3	1,934.6	6.0	7.3	-123.21	634.3	468.0	943.0	932.7	10.35	91.144	
2,300.0	2,285.3	2,062.2	2,008.4	6.3	7.7	-124.26	655.8	470.3	977.2	966.4	10.83	90.207	
7,400.0	6,539.0	6,699.6	6,527.7	21.1	26.3	89.12	1,556.2	580.5	950.9	903.6	47.31	20.097	
7,500.0	6,539.0	6,700.0	6,528.1	22.6	26.3	89.18	1,556.2	580.5	861.8	813.1	48.75	17.679	
7,600.0	6,539.0	6,700.4	6,528.5	24.1	26.4	89.24	1,556.2	580.5	775.4	725.1	50.25	15.432	
7,700.0	6,539.0	6,700.9	6,528.9	25.6	26.4	89.29	1,556.2	580.5	692.6	640.8	51.80	13.371	
7,800.0	6,539.0	6,701.3	6,529.3	27.2	26.4	89.35	1,556.2	580.5	615.0	561.6	53.40	11.516	
7,900.0	6,539.0	6,701.7	6,529.7	28.9	26.4	89.40	1,556.2	580.5	544.8	489.7	55.05	9.897	
8,000.0	6,539.0	6,702.1	6,530.1	30.5	26.4	89.46	1,556.2	580.5	485.1	428.3	56.72	8.552	
8,100.0	6,539.0	6,702.4	6,530.5	32.2	26.4	89.51	1,556.2	580.5	440.2	381.8	58.42	7.535	
8,200.0	6,539.0	6,702.8	6,530.9	34.0	26.4	89.57	1,556.2	580.5	415.1	355.0	60.15	6.902	
8,257.4	6,539.0	6,703.1	6,531.1	35.0	26.4	89.60	1,556.2	580.5	411.1	350.0	61.15	6.723 CC, ES	
8,300.0	6,539.0	6,703.2	6,531.3	35.7	26.4	89.62	1,556.2	580.5	413.3	351.4	61.89	6.678 SF	
8,400.0	6,539.0	6,703.6	6,531.7	37.5	26.4	89.67	1,556.2	580.5	435.1	371.5	63.65	6.836	
8,500.0	6,539.0	6,704.0	6,532.0	39.2	26.4	89.73	1,556.2	580.5	477.4	411.9	65.43	7.295	
8,600.0	6,539.0	6,704.3	6,532.4	41.0	26.4	89.78	1,556.2	580.6	535.1	467.9	67.22	7.961	
8,700.0	6,539.0	6,704.7	6,532.8	42.8	26.4	89.83	1,556.2	580.6	604.1	535.0	69.02	8.752	
8,800.0	6,539.0	6,705.1	6,533.1	44.6	26.4	89.88	1,556.2	580.6	680.7	609.9	70.83	9.610	
8,900.0	6,539.0	6,705.4	6,533.5	46.5	26.4	89.93	1,556.2	580.6	762.8	690.2	72.65	10.500	
9,000.0	6,539.0	6,705.8	6,533.9	48.3	26.4	89.98	1,556.2	580.6	848.8	774.3	74.48	11.396	
9,100.0	6,539.0	6,706.2	6,534.2	50.1	26.4	90.03	1,556.2	580.6	937.5	861.2	76.32	12.285	

<b>Company:</b>	BONANZA CREEK ENERGY OPERATING	<b>Local Co-ordinate Reference:</b>	Well Antelope 24-21-20HC
<b>Project:</b>	SEC.20-T5N-R62W	<b>TVD Reference:</b>	WELL @ 4678.0ft (RKB - 13')
<b>Reference Site:</b>	Antelope J-20 Pad Sec.20-T5N-R62W	<b>MD Reference:</b>	WELL @ 4678.0ft (RKB - 13')
<b>Site Error:</b>	0.0ft	<b>North Reference:</b>	True
<b>Reference Well:</b>	Antelope 24-21-20HC	<b>Survey Calculation Method:</b>	Minimum Curvature
<b>Well Error:</b>	0.0ft	<b>Output errors are at</b>	2.00 sigma
<b>Reference Wellbore</b>	Wellbore #1	<b>Database:</b>	Landmark
<b>Reference Design:</b>	Plan #2 (11-13-13)	<b>Offset TVD Reference:</b>	Offset Datum

Offset Design													Offset Site Error:	0.0 ft
Survey Program: 6382-UNKNOWN													Offset Well Error:	0.0 ft
Reference		Offset		Semi Major Axis			Distance							Warning
Measured Depth (ft)	Vertical Depth (ft)	Measured Depth (ft)	Vertical Depth (ft)	Reference (ft)	Offset (ft)	Highside Toolface (°)	Offset Wellbore Centre +N/-S (ft)	+E/-W (ft)	Between Centres (ft)	Between Ellipses (ft)	Minimum Separation (ft)	Separation Factor		
0.0	0.0	0.0	0.0	0.0	0.0	58.49	273.2	445.8	522.9					
100.0	100.0	95.0	95.0	0.1	1.9	58.49	273.2	445.8	522.8	520.8	2.01	259.789		
200.0	200.0	195.0	195.0	0.3	3.9	58.49	273.2	445.8	522.8	518.6	4.24	123.390		
300.0	300.0	295.0	295.0	0.6	5.9	148.58	273.2	445.8	524.3	517.9	6.45	81.297		
400.0	399.8	394.8	394.8	0.8	7.9	148.83	273.2	445.8	528.8	520.2	8.65	61.123		
500.0	499.5	494.5	494.5	1.0	9.9	157.72	273.2	445.8	535.8	524.9	10.85	49.368		
600.0	599.3	594.3	594.3	1.2	11.9	-175.29	273.2	445.8	542.0	529.0	13.05	41.540		
700.0	699.2	694.2	694.2	1.4	13.9	-140.13	273.2	445.8	547.1	531.9	15.25	35.874		
800.0	798.9	793.9	793.9	1.7	15.9	-115.34	273.2	445.8	551.0	533.5	17.46	31.560		
900.0	898.5	893.5	893.5	1.9	17.9	-102.47	273.2	445.8	553.8	534.1	19.67	28.146		
1,000.0	997.8	992.8	992.8	2.1	19.9	-95.91	273.2	445.8	555.6	533.7	21.91	25.362		
1,100.0	1,096.8	1,091.8	1,091.8	2.4	21.8	-96.67	273.2	445.8	557.0	532.9	24.15	23.062		
1,200.0	1,195.9	1,190.9	1,190.9	2.7	23.8	-98.07	273.2	445.8	558.8	532.4	26.42	21.154		
1,300.0	1,294.9	1,289.9	1,289.9	3.0	25.8	-99.46	273.2	445.8	561.0	532.3	28.69	19.552		
1,400.0	1,393.9	1,388.9	1,388.9	3.3	27.8	-100.84	273.2	445.8	563.4	532.5	30.97	18.192		
1,500.0	1,493.0	1,488.0	1,488.0	3.6	29.8	-102.20	273.2	445.8	566.2	533.0	33.25	17.027		
1,600.0	1,592.0	1,587.0	1,587.0	3.9	31.7	-103.55	273.2	445.8	569.3	533.8	35.54	16.019		
1,700.0	1,691.0	1,686.0	1,686.0	4.3	33.7	-104.89	273.2	445.8	572.8	534.9	37.83	15.141		
1,800.0	1,790.1	1,785.1	1,785.1	4.6	35.7	-106.21	273.2	445.8	576.5	536.4	40.12	14.371		
1,900.0	1,889.1	1,884.1	1,884.1	4.9	37.7	-107.51	273.2	445.8	580.6	538.2	42.40	13.691		
2,000.0	1,988.2	1,983.2	1,983.2	5.3	39.7	-108.79	273.2	445.8	584.9	540.2	44.69	13.089		
2,100.0	2,087.2	2,082.2	2,082.2	5.6	41.6	-110.06	273.2	445.8	589.6	542.6	46.97	12.552		
2,200.0	2,186.2	2,181.2	2,181.2	6.0	43.6	-111.30	273.2	445.8	594.5	545.3	49.25	12.070		
2,300.0	2,285.3	2,280.3	2,280.3	6.3	45.6	-112.53	273.2	445.8	599.7	548.2	51.53	11.638		
2,400.0	2,384.3	2,379.3	2,379.3	6.6	47.6	-113.73	273.2	445.8	605.2	551.4	53.81	11.248		
2,500.0	2,483.3	2,478.3	2,478.3	7.0	49.6	-114.91	273.2	445.8	611.0	554.9	56.08	10.895		
2,600.0	2,582.4	2,577.4	2,577.4	7.3	51.5	-116.07	273.2	445.8	617.0	558.6	58.35	10.574		
2,700.0	2,681.4	2,676.4	2,676.4	7.7	53.5	-117.20	273.2	445.8	623.2	562.6	60.61	10.282		
2,800.0	2,780.4	2,775.4	2,775.4	8.0	55.5	-118.32	273.2	445.8	629.7	566.9	62.88	10.016		
2,900.0	2,879.5	2,874.5	2,874.5	8.4	57.5	-119.41	273.2	445.8	636.5	571.4	65.14	9.772		
3,000.0	2,978.5	2,973.5	2,973.5	8.7	59.5	-120.47	273.2	445.8	643.5	576.1	67.39	9.548		
3,100.0	3,077.5	3,072.5	3,072.5	9.1	61.5	-121.52	273.2	445.8	650.6	581.0	69.65	9.342		
3,200.0	3,176.6	3,171.6	3,171.6	9.4	63.4	-122.54	273.2	445.8	658.0	586.2	71.89	9.153		
3,300.0	3,275.6	3,270.6	3,270.6	9.8	65.4	-123.54	273.2	445.8	665.7	591.5	74.14	8.978		
3,400.0	3,374.6	3,369.6	3,369.6	10.1	67.4	-124.51	273.2	445.8	673.5	597.1	76.38	8.817		
3,500.0	3,473.7	3,468.7	3,468.7	10.5	69.4	-125.47	273.2	445.8	681.5	602.8	78.63	8.667		
3,600.0	3,572.7	3,567.7	3,567.7	10.8	71.4	-126.40	273.2	445.8	689.6	608.8	80.86	8.529		
3,700.0	3,671.9	3,666.9	3,666.9	11.1	73.3	-127.34	273.2	445.8	697.5	614.4	83.15	8.389		
3,800.0	3,771.4	3,766.4	3,766.4	11.3	75.3	-128.06	273.2	445.8	703.5	618.1	85.40	8.238		
3,900.0	3,871.2	3,866.2	3,866.2	11.5	77.3	-128.52	273.2	445.8	707.3	619.7	87.61	8.073		
4,000.0	3,971.1	3,966.1	3,966.1	11.7	79.3	-128.72	273.2	445.8	709.1	619.3	89.79	7.897		
4,100.0	4,071.1	4,066.1	4,066.1	11.8	81.3	23.13	273.2	445.8	709.1	617.2	91.95	7.712		
4,200.0	4,171.1	4,166.1	4,166.1	11.9	83.3	23.13	273.2	445.8	709.1	615.0	94.10	7.536		
4,300.0	4,271.1	4,266.1	4,266.1	12.1	85.3	23.13	273.2	445.8	709.1	612.9	96.26	7.367		
4,400.0	4,371.1	4,366.1	4,366.1	12.2	87.3	23.13	273.2	445.8	709.1	610.7	98.42	7.205		
4,500.0	4,471.1	4,466.1	4,466.1	12.4	89.3	23.13	273.2	445.8	709.1	608.6	100.58	7.050		
4,600.0	4,571.1	4,566.1	4,566.1	12.5	91.3	23.13	273.2	445.8	709.1	606.4	102.75	6.902		
4,700.0	4,671.1	4,666.1	4,666.1	12.7	93.3	23.13	273.2	445.8	709.1	604.2	104.91	6.759		
4,800.0	4,771.1	4,766.1	4,766.1	12.8	95.3	23.13	273.2	445.8	709.1	602.1	107.08	6.623		
4,900.0	4,871.1	4,866.1	4,866.1	13.0	97.3	23.13	273.2	445.8	709.1	599.9	109.25	6.491		
5,000.0	4,971.1	4,966.1	4,966.1	13.1	99.3	23.13	273.2	445.8	709.1	597.7	111.42	6.365		
5,100.0	5,071.1	5,066.1	5,066.1	13.3	101.3	23.13	273.2	445.8	709.1	595.6	113.59	6.243		

CC - Min centre to center distance or convergent point, SF - min separation factor, ES - min ellipse separation

Antelope J-F20HZ (Exist) Pad Sec.20-T5N-R62W - Antelope 24-20 (Exist.) - Wellbore #1 - Wellbore #1													Offset Site Error:	0.0 ft
Survey Program: 6382-UNKNOWN													Offset Well Error:	0.0 ft
Reference		Offset		Semi Major Axis			Distance							
Measured Depth	Vertical Depth	Measured Depth	Vertical Depth	Reference	Offset	Highside Toolface	Offset Wellbore Centre		Between Centres	Between Ellipses	Minimum Separation	Separation Factor	Warning	
(ft)	(ft)	(ft)	(ft)	(ft)	(ft)	(°)	+N/-S (ft)	+E/-W (ft)	(ft)	(ft)	(ft)			
5,200.0	5,171.1	5,166.1	5,166.1	13.4	103.3	23.13	273.2	445.8	709.1	593.4	115.77	6.126		
5,300.0	5,271.1	5,266.1	5,266.1	13.6	105.3	23.13	273.2	445.8	709.1	591.2	117.94	6.013		
5,400.0	5,371.1	5,366.1	5,366.1	13.8	107.3	23.13	273.2	445.8	709.1	589.0	120.12	5.904		
5,500.0	5,471.1	5,466.1	5,466.1	13.9	109.3	23.13	273.2	445.8	709.1	586.8	122.30	5.798		
5,600.0	5,571.1	5,566.1	5,566.1	14.1	111.3	23.13	273.2	445.8	709.1	584.7	124.48	5.697		
5,700.0	5,671.1	5,666.1	5,666.1	14.3	113.3	23.13	273.2	445.8	709.1	582.5	126.66	5.599		
5,800.0	5,771.1	5,766.1	5,766.1	14.4	115.3	23.13	273.2	445.8	709.1	580.3	128.85	5.504		
5,900.0	5,871.1	5,866.1	5,866.1	14.6	117.3	23.13	273.2	445.8	709.1	578.1	131.03	5.412		
6,000.0	5,971.1	5,966.1	5,966.1	14.8	119.3	23.13	273.2	445.8	709.1	575.9	133.22	5.323		
6,100.0	6,070.8	6,065.8	6,065.8	14.9	121.3	23.49	273.2	445.8	703.7	569.6	134.06	5.249		
6,200.0	6,167.6	6,162.6	6,162.6	14.9	123.3	25.38	273.2	445.8	681.3	550.3	131.01	5.200		
6,300.0	6,258.0	6,253.0	6,253.0	14.8	125.1	29.13	273.2	445.8	642.7	517.7	125.05	5.140		
6,400.0	6,338.6	6,333.6	6,333.6	14.7	126.7	35.54	273.2	445.8	590.1	470.9	119.19	4.951		
6,500.0	6,406.5	6,382.0	6,382.0	14.6	127.6	44.10	273.2	445.8	527.0	409.7	117.34	4.491		
6,600.0	6,459.1	6,382.0	6,382.0	14.6	127.6	50.95	273.2	445.8	462.4	344.4	118.04	3.918		
6,700.0	6,494.6	6,382.0	6,382.0	14.6	127.6	57.80	273.2	445.8	401.6	278.8	122.73	3.272		
6,800.0	6,520.5	6,382.0	6,382.0	15.0	127.6	58.00	273.2	445.8	353.3	230.0	123.26	2.866		
6,900.0	6,537.5	6,382.0	6,382.0	15.6	127.6	60.73	273.2	445.8	324.6	198.8	125.81	2.580		
6,971.0	6,541.0	6,382.0	6,382.0	16.2	127.6	61.00	273.2	445.8	317.6	191.1	126.55	2.510 CC		
7,000.0	6,539.0	6,382.0	6,382.0	16.4	127.6	61.32	273.2	445.8	317.7	190.6	127.13	2.499 ES, SF		
7,100.0	6,539.0	6,382.0	6,382.0	17.4	127.6	61.32	273.2	445.8	340.7	212.7	128.02	2.661		
7,200.0	6,539.0	6,382.0	6,382.0	18.5	127.6	61.32	273.2	445.8	388.9	259.8	129.04	3.014		
7,300.0	6,539.0	6,382.0	6,382.0	19.8	127.6	61.32	273.2	445.8	454.3	324.1	130.16	3.490		
7,400.0	6,539.0	6,382.0	6,382.0	21.1	127.6	61.32	273.2	445.8	530.6	399.2	131.37	4.039		
7,500.0	6,539.0	6,382.0	6,382.0	22.6	127.6	61.32	273.2	445.8	613.7	481.1	132.66	4.626		
7,600.0	6,539.0	6,382.0	6,382.0	24.1	127.6	61.32	273.2	445.8	701.3	567.3	134.00	5.234		
7,700.0	6,539.0	6,382.0	6,382.0	25.6	127.6	61.32	273.2	445.8	791.8	656.4	135.39	5.848		
7,800.0	6,539.0	6,382.0	6,382.0	27.2	127.6	61.32	273.2	445.8	884.4	747.5	136.83	6.463		
7,900.0	6,539.0	6,382.0	6,382.0	28.9	127.6	61.32	273.2	445.8	978.4	840.1	138.29	7.075		

<b>Company:</b>	BONANZA CREEK ENERGY OPERATING	<b>Local Co-ordinate Reference:</b>	Well Antelope 24-21-20HC
<b>Project:</b>	SEC.20-T5N-R62W	<b>TVD Reference:</b>	WELL @ 4678.0ft (RKB - 13')
<b>Reference Site:</b>	Antelope J-20 Pad Sec.20-T5N-R62W	<b>MD Reference:</b>	WELL @ 4678.0ft (RKB - 13')
<b>Site Error:</b>	0.0ft	<b>North Reference:</b>	True
<b>Reference Well:</b>	Antelope 24-21-20HC	<b>Survey Calculation Method:</b>	Minimum Curvature
<b>Well Error:</b>	0.0ft	<b>Output errors are at</b>	2.00 sigma
<b>Reference Wellbore</b>	Wellbore #1	<b>Database:</b>	Landmark
<b>Reference Design:</b>	Plan #2 (11-13-13)	<b>Offset TVD Reference:</b>	Offset Datum

<b>Offset Design</b>												<b>Offset Site Error:</b>	0.0 ft
Antelope J-F-20HZ (Exist) Pad Sec.20-T5N-R62W - Antelope G-20 (Exist) - Wellbore #1 - Wellbore #1												<b>Offset Well Error:</b>	0.0 ft
Survey Program: 7500-UNKNOWN													
Reference		Offset		Semi Major Axis			Distance						
Measured Depth (ft)	Vertical Depth (ft)	Measured Depth (ft)	Vertical Depth (ft)	Reference (ft)	Offset (ft)	Highside Toolface (°)	Offset Wellbore Centre +N/-S (ft)	+E/-W (ft)	Between Centres (ft)	Between Ellipses (ft)	Minimum Separation (ft)	Separation Factor	Warning
10,500.0	6,539.0	6,512.0	6,512.0	76.2	130.2	-90.00	4,269.7	-699.2	990.1	783.7	206.45	4.796	
10,600.0	6,539.0	6,512.0	6,512.0	78.1	130.2	-90.00	4,269.7	-699.2	946.8	738.5	208.33	4.545	
10,700.0	6,539.0	6,512.0	6,512.0	80.0	130.2	-90.00	4,269.7	-699.2	912.4	702.2	210.22	4.340	
10,800.0	6,539.0	6,512.0	6,512.0	81.9	130.2	-90.00	4,269.7	-699.2	888.1	676.0	212.11	4.187	
10,900.0	6,539.0	6,512.0	6,512.0	83.8	130.2	-90.00	4,269.7	-699.2	874.5	660.5	214.00	4.086	
10,969.5	6,539.0	6,512.0	6,512.0	85.1	130.2	-90.00	4,269.7	-699.2	871.8	656.4	215.32	4.049 CC	
11,000.0	6,539.0	6,512.0	6,512.0	85.7	130.2	-90.00	4,269.7	-699.2	872.3	656.4	215.89	4.040 ES, SF	
11,095.3	6,539.0	6,512.0	6,512.0	87.5	130.2	-90.00	4,269.7	-699.2	880.8	663.1	217.69	4.046	

<b>Company:</b>	BONANZA CREEK ENERGY OPERATING	<b>Local Co-ordinate Reference:</b>	Well Antelope 24-21-20HC
<b>Project:</b>	SEC.20-T5N-R62W	<b>TVD Reference:</b>	WELL @ 4678.0ft (RKB - 13')
<b>Reference Site:</b>	Antelope J-20 Pad Sec.20-T5N-R62W	<b>MD Reference:</b>	WELL @ 4678.0ft (RKB - 13')
<b>Site Error:</b>	0.0ft	<b>North Reference:</b>	True
<b>Reference Well:</b>	Antelope 24-21-20HC	<b>Survey Calculation Method:</b>	Minimum Curvature
<b>Well Error:</b>	0.0ft	<b>Output errors are at</b>	2.00 sigma
<b>Reference Wellbore</b>	Wellbore #1	<b>Database:</b>	Landmark
<b>Reference Design:</b>	Plan #2 (11-13-13)	<b>Offset TVD Reference:</b>	Offset Datum

Offset Design													Offset Site Error:	0.0 ft
Survey Program: 7500-UNKNOWN													Offset Well Error:	0.0 ft
Reference		Offset		Semi Major Axis			Distance							Warning
Measured Depth (ft)	Vertical Depth (ft)	Measured Depth (ft)	Vertical Depth (ft)	Reference (ft)	Offset (ft)	Highside Toolface (°)	Offset Wellbore Centre +N/-S (ft)	+E/-W (ft)	Between Centres (ft)	Between Ellipses (ft)	Minimum Separation (ft)	Separation Factor		
0.0	0.0	0.0	0.0	0.0	0.0	55.37	273.2	395.6	481.0					
100.0	100.0	86.0	86.0	0.1	1.7	55.37	273.2	395.6	480.8	479.0	1.83	262.365		
200.0	200.0	186.0	186.0	0.3	3.7	55.37	273.2	395.6	480.8	476.7	4.06	118.502		
300.0	300.0	286.0	286.0	0.6	5.7	145.47	273.2	395.6	482.2	476.0	6.27	76.915		
400.0	399.8	385.8	385.8	0.8	7.7	145.77	273.2	395.6	486.6	478.1	8.47	57.424		
500.0	499.5	485.5	485.5	1.0	9.7	154.74	273.2	395.6	493.3	482.6	10.68	46.210		
600.0	599.3	585.3	585.3	1.2	11.7	-178.22	273.2	395.6	499.5	486.7	12.87	38.810		
700.0	699.2	685.2	685.2	1.4	13.7	-143.05	273.2	395.6	504.7	489.6	15.07	33.486		
800.0	798.9	784.9	784.9	1.7	15.7	-118.27	273.2	395.6	508.8	491.5	17.28	29.452		
900.0	898.5	884.5	884.5	1.9	17.7	-105.45	273.2	395.6	512.0	492.5	19.49	26.272		
1,000.0	997.8	983.8	983.8	2.1	19.7	-98.96	273.2	395.6	514.5	492.8	21.72	23.688		
1,100.0	1,096.8	1,082.8	1,082.8	2.4	21.7	-99.83	273.2	395.6	516.7	492.7	23.96	21.562		
1,200.0	1,195.9	1,181.9	1,181.9	2.7	23.6	-101.32	273.2	395.6	519.3	493.0	26.22	19.803		
1,300.0	1,294.9	1,280.9	1,280.9	3.0	25.6	-102.80	273.2	395.6	522.2	493.7	28.49	18.329		
1,400.0	1,393.9	1,379.9	1,379.9	3.3	27.6	-104.26	273.2	395.6	525.4	494.7	30.76	17.080		
1,500.0	1,493.0	1,479.0	1,479.0	3.6	29.6	-105.70	273.2	395.6	529.1	496.0	33.04	16.011		
1,600.0	1,592.0	1,578.0	1,578.0	3.9	31.6	-107.12	273.2	395.6	533.0	497.7	35.32	15.089		
1,700.0	1,691.0	1,677.0	1,677.0	4.3	33.5	-108.52	273.2	395.6	537.3	499.7	37.60	14.288		
1,800.0	1,790.1	1,776.1	1,776.1	4.6	35.5	-109.90	273.2	395.6	541.9	502.0	39.89	13.586		
1,900.0	1,889.1	1,875.1	1,875.1	4.9	37.5	-111.25	273.2	395.6	546.8	504.6	42.16	12.968		
2,000.0	1,988.2	1,974.2	1,974.2	5.3	39.5	-112.58	273.2	395.6	552.0	507.6	44.44	12.421		
2,100.0	2,087.2	2,073.2	2,073.2	5.6	41.5	-113.89	273.2	395.6	557.5	510.8	46.72	11.934		
2,200.0	2,186.2	2,172.2	2,172.2	6.0	43.4	-115.16	273.2	395.6	563.3	514.3	48.99	11.499		
2,300.0	2,285.3	2,271.3	2,271.3	6.3	45.4	-116.42	273.2	395.6	569.4	518.1	51.26	11.109		
2,400.0	2,384.3	2,370.3	2,370.3	6.6	47.4	-117.64	273.2	395.6	575.8	522.2	53.52	10.757		
2,500.0	2,483.3	2,469.3	2,469.3	7.0	49.4	-118.84	273.2	395.6	582.4	526.6	55.79	10.439		
2,600.0	2,582.4	2,568.4	2,568.4	7.3	51.4	-120.01	273.2	395.6	589.2	531.2	58.04	10.151		
2,700.0	2,681.4	2,667.4	2,667.4	7.7	53.3	-121.16	273.2	395.6	596.3	536.0	60.30	9.889		
2,800.0	2,780.4	2,766.4	2,766.4	8.0	55.3	-122.28	273.2	395.6	603.7	541.1	62.55	9.650		
2,900.0	2,879.5	2,865.5	2,865.5	8.4	57.3	-123.37	273.2	395.6	611.2	546.4	64.80	9.432		
3,000.0	2,978.5	2,964.5	2,964.5	8.7	59.3	-124.43	273.2	395.6	619.0	552.0	67.05	9.232		
3,100.0	3,077.5	3,063.5	3,063.5	9.1	61.3	-125.47	273.2	395.6	627.0	557.7	69.29	9.049		
3,200.0	3,176.6	3,162.6	3,162.6	9.4	63.3	-126.48	273.2	395.6	635.2	563.7	71.53	8.880		
3,300.0	3,275.6	3,261.6	3,261.6	9.8	65.2	-127.47	273.2	395.6	643.6	569.8	73.77	8.724		
3,400.0	3,374.6	3,360.6	3,360.6	10.1	67.2	-128.43	273.2	395.6	652.2	576.1	76.01	8.580		
3,500.0	3,473.7	3,459.7	3,459.7	10.5	69.2	-129.36	273.2	395.6	660.9	582.7	78.24	8.447		
3,600.0	3,572.7	3,558.7	3,558.7	10.8	71.2	-130.28	273.2	395.6	669.8	589.4	80.47	8.324		
3,700.0	3,671.9	3,657.9	3,657.9	11.1	73.2	-131.20	273.2	395.6	678.4	595.6	82.76	8.197		
3,800.0	3,771.4	3,757.4	3,757.4	11.3	75.1	-131.91	273.2	395.6	684.8	599.8	85.02	8.055		
3,900.0	3,871.2	3,857.2	3,857.2	11.5	77.1	-132.35	273.2	395.6	689.0	601.8	87.25	7.897		
4,000.0	3,971.1	3,957.1	3,957.1	11.7	79.1	-132.55	273.2	395.6	690.9	601.5	89.43	7.725		
4,100.0	4,071.1	4,057.1	4,057.1	11.8	81.1	19.30	273.2	395.6	691.0	599.4	91.59	7.544		
4,200.0	4,171.1	4,157.1	4,157.1	11.9	83.1	19.30	273.2	395.6	691.0	597.2	93.75	7.371		
4,300.0	4,271.1	4,257.1	4,257.1	12.1	85.1	19.30	273.2	395.6	691.0	595.1	95.91	7.205		
4,400.0	4,371.1	4,357.1	4,357.1	12.2	87.1	19.30	273.2	395.6	691.0	592.9	98.07	7.046		
4,500.0	4,471.1	4,457.1	4,457.1	12.4	89.1	19.30	273.2	395.6	691.0	590.7	100.24	6.894		
4,600.0	4,571.1	4,557.1	4,557.1	12.5	91.1	19.30	273.2	395.6	691.0	588.6	102.40	6.748		
4,700.0	4,671.1	4,657.1	4,657.1	12.7	93.1	19.30	273.2	395.6	691.0	586.4	104.57	6.608		
4,800.0	4,771.1	4,757.1	4,757.1	12.8	95.1	19.30	273.2	395.6	691.0	584.2	106.74	6.474		
4,900.0	4,871.1	4,857.1	4,857.1	13.0	97.1	19.30	273.2	395.6	691.0	582.1	108.91	6.344		
5,000.0	4,971.1	4,957.1	4,957.1	13.1	99.1	19.30	273.2	395.6	691.0	579.9	111.09	6.220		
5,100.0	5,071.1	5,057.1	5,057.1	13.3	101.1	19.30	273.2	395.6	691.0	577.7	113.26	6.101		

CC - Min centre to center distance or convergent point, SF - min separation factor, ES - min ellipse separation

<b>Company:</b>	BONANZA CREEK ENERGY OPERATING	<b>Local Co-ordinate Reference:</b>	Well Antelope 24-21-20HC
<b>Project:</b>	SEC.20-T5N-R62W	<b>TVD Reference:</b>	WELL @ 4678.0ft (RKB - 13')
<b>Reference Site:</b>	Antelope J-20 Pad Sec.20-T5N-R62W	<b>MD Reference:</b>	WELL @ 4678.0ft (RKB - 13')
<b>Site Error:</b>	0.0ft	<b>North Reference:</b>	True
<b>Reference Well:</b>	Antelope 24-21-20HC	<b>Survey Calculation Method:</b>	Minimum Curvature
<b>Well Error:</b>	0.0ft	<b>Output errors are at</b>	2.00 sigma
<b>Reference Wellbore</b>	Wellbore #1	<b>Database:</b>	Landmark
<b>Reference Design:</b>	Plan #2 (11-13-13)	<b>Offset TVD Reference:</b>	Offset Datum

Offset Design										Antelope J-F-20HZ (Exist) Pad Sec.20-T5N-R62W - Antelope I-20 (Exist) - Wellbore #1 - Wellbore #1				Offset Site Error:	0.0 ft
Survey Program: 7500-UNKNOWN														Offset Well Error:	0.0 ft
Reference		Offset		Semi Major Axis			Distance							Warning	
Measured Depth	Vertical Depth	Measured Depth	Vertical Depth	Reference	Offset	Highside Toolface	Offset Wellbore Centre +N/-S	Offset Wellbore Centre +E/-W	Between Centres	Between Ellipses	Minimum Separation	Separation Factor			
(ft)	(ft)	(ft)	(ft)	(ft)	(ft)	(°)	(ft)	(ft)	(ft)	(ft)	(ft)				
5,200.0	5,171.1	5,157.1	5,157.1	13.4	103.1	19.30	273.2	395.6	691.0	575.5	115.44	5.986			
5,300.0	5,271.1	5,257.1	5,257.1	13.6	105.1	19.30	273.2	395.6	691.0	573.4	117.62	5.875			
5,400.0	5,371.1	5,357.1	5,357.1	13.8	107.1	19.30	273.2	395.6	691.0	571.2	119.80	5.768			
5,500.0	5,471.1	5,457.1	5,457.1	13.9	109.1	19.30	273.2	395.6	691.0	569.0	121.98	5.665			
5,600.0	5,571.1	5,557.1	5,557.1	14.1	111.1	19.30	273.2	395.6	691.0	566.8	124.16	5.565			
5,700.0	5,671.1	5,657.1	5,657.1	14.3	113.1	19.30	273.2	395.6	691.0	564.6	126.34	5.469			
5,800.0	5,771.1	5,757.1	5,757.1	14.4	115.1	19.30	273.2	395.6	691.0	562.5	128.53	5.376			
5,900.0	5,871.1	5,857.1	5,857.1	14.6	117.1	19.30	273.2	395.6	691.0	560.3	130.72	5.286			
6,000.0	5,971.1	5,957.1	5,957.1	14.8	119.1	19.30	273.2	395.6	691.0	558.1	132.90	5.199			
6,100.0	6,070.8	6,056.8	6,056.8	14.9	121.1	19.61	273.2	395.6	685.4	551.7	133.67	5.127			
6,200.0	6,167.6	6,153.6	6,153.6	14.9	123.1	21.24	273.2	395.6	662.3	532.1	130.28	5.084			
6,300.0	6,258.0	6,244.0	6,244.0	14.8	124.9	24.55	273.2	395.6	622.6	499.2	123.47	5.043			
6,400.0	6,338.6	6,324.6	6,324.6	14.7	126.5	30.35	273.2	395.6	568.2	452.3	115.90	4.902			
6,500.0	6,406.5	6,392.5	6,392.5	14.6	127.8	40.01	273.2	395.6	501.9	388.3	113.62	4.418			
6,600.0	6,459.1	6,445.1	6,445.1	14.6	128.9	54.78	273.2	395.6	428.1	304.7	123.37	3.470			
6,700.0	6,494.6	6,480.6	6,480.6	14.6	129.6	72.65	273.2	395.6	352.5	214.2	138.38	2.548			
6,800.0	6,520.5	6,506.5	6,506.5	15.0	130.1	78.90	273.2	395.6	285.7	143.0	142.73	2.002			
6,900.0	6,537.5	6,523.5	6,523.5	15.6	130.5	88.59	273.2	395.6	239.5	93.4	146.02	1.640			
6,974.3	6,541.0	6,527.0	6,527.0	16.2	130.5	90.00	273.2	395.6	227.7	81.0	146.72	1.552	CC, ES, SF		
7,000.0	6,539.0	6,525.0	6,525.0	16.4	130.5	90.00	273.2	395.6	229.1	82.2	146.88	1.560			
7,100.0	6,539.0	6,525.0	6,525.0	17.4	130.5	90.00	273.2	395.6	260.1	112.2	147.85	1.759			
7,200.0	6,539.0	6,525.0	6,525.0	18.5	130.5	90.00	273.2	395.6	320.6	171.7	148.98	2.152			
7,300.0	6,539.0	6,525.0	6,525.0	19.8	130.5	90.00	273.2	395.6	397.4	247.2	150.22	2.646			
7,400.0	6,539.0	6,525.0	6,525.0	21.1	130.5	90.00	273.2	395.6	482.8	331.2	151.57	3.185			
7,500.0	6,539.0	6,525.0	6,525.0	22.6	130.5	90.00	273.2	395.6	572.9	419.9	153.00	3.745			
7,600.0	6,539.0	6,525.0	6,525.0	24.1	130.5	90.00	273.2	395.6	665.9	511.4	154.50	4.310			
7,700.0	6,539.0	6,525.0	6,525.0	25.6	130.5	90.00	273.2	395.6	760.6	604.6	156.06	4.874			
7,800.0	6,539.0	6,525.0	6,525.0	27.2	130.5	90.00	273.2	395.6	856.6	698.9	157.66	5.433			
7,900.0	6,539.0	6,525.0	6,525.0	28.9	130.5	90.00	273.2	395.6	953.4	794.1	159.30	5.985			

<b>Company:</b>	BONANZA CREEK ENERGY OPERATING	<b>Local Co-ordinate Reference:</b>	Well Antelope 24-21-20HC
<b>Project:</b>	SEC.20-T5N-R62W	<b>TVD Reference:</b>	WELL @ 4678.0ft (RKB - 13')
<b>Reference Site:</b>	Antelope J-20 Pad Sec.20-T5N-R62W	<b>MD Reference:</b>	WELL @ 4678.0ft (RKB - 13')
<b>Site Error:</b>	0.0ft	<b>North Reference:</b>	True
<b>Reference Well:</b>	Antelope 24-21-20HC	<b>Survey Calculation Method:</b>	Minimum Curvature
<b>Well Error:</b>	0.0ft	<b>Output errors are at</b>	2.00 sigma
<b>Reference Wellbore</b>	Wellbore #1	<b>Database:</b>	Landmark
<b>Reference Design:</b>	Plan #2 (11-13-13)	<b>Offset TVD Reference:</b>	Offset Datum

Offset Design													Offset Site Error:	0.0 ft
Survey Program: 221-MWD													Offset Well Error:	0.0 ft
Reference		Offset		Semi Major Axis			Distance							Warning
Measured Depth (ft)	Vertical Depth (ft)	Measured Depth (ft)	Vertical Depth (ft)	Reference (ft)	Offset (ft)	Highside Toolface (°)	Offset Wellbore Centre +N/-S (ft)	+E/-W (ft)	Between Centres (ft)	Between Ellipses (ft)	Minimum Separation (ft)	Separation Factor		
0.0	0.0	0.0	0.0	0.0	0.0	0.00	40.1	0.0	40.1					
100.0	100.0	100.3	100.3	0.1	0.1	-0.05	39.7	0.0	39.7	39.5	0.23	175.563		
200.0	200.0	200.5	200.5	0.3	0.2	-0.20	38.8	-0.1	38.8	38.2	0.56	68.681		
300.0	300.0	300.5	300.5	0.6	0.4	92.33	37.5	-0.2	37.5	36.5	0.96	38.888		
388.9	388.8	389.2	389.2	0.8	0.6	99.39	36.4	-0.2	36.9	35.6	1.35	27.450 CC		
400.0	399.8	400.2	400.2	0.8	0.6	100.58	36.3	-0.2	36.9	35.5	1.39	26.527 ES		
500.0	499.5	500.0	500.0	1.0	0.8	121.24	35.1	-0.1	38.3	36.5	1.84	20.890		
600.0	599.3	599.8	599.8	1.2	1.0	155.42	33.7	0.1	41.8	39.6	2.25	18.587		
700.0	699.2	699.7	699.7	1.4	1.3	-167.23	32.2	0.3	46.1	43.5	2.66	17.346		
800.0	798.9	799.6	799.6	1.7	1.5	-143.87	30.6	0.8	50.8	47.8	3.07	16.538		
900.0	898.5	899.5	899.4	1.9	1.7	-135.00	28.7	1.3	56.2	52.7	3.50	16.074		
1,000.0	997.8	999.0	998.9	2.1	1.9	-134.21	26.7	1.8	62.9	59.0	3.92	16.028		
1,100.0	1,096.8	1,098.4	1,098.3	2.4	2.1	-140.75	24.7	2.3	71.2	66.9	4.35	16.359		
1,200.0	1,195.9	1,198.3	1,198.1	2.7	2.4	-146.31	22.1	2.9	80.0	75.2	4.79	16.691		
1,300.0	1,294.9	1,297.7	1,297.5	3.0	2.6	-150.82	19.2	3.3	89.0	83.7	5.23	17.002		
1,400.0	1,393.9	1,397.4	1,397.2	3.3	2.8	-154.83	16.1	3.1	98.2	92.6	5.67	17.313		
1,500.0	1,493.0	1,497.3	1,497.0	3.6	3.0	-158.58	12.5	2.2	107.5	101.4	6.12	17.565		
1,600.0	1,592.0	1,597.3	1,596.9	3.9	3.3	-162.11	8.3	0.6	116.6	110.0	6.57	17.742		
1,700.0	1,691.0	1,697.2	1,696.6	4.3	3.5	-165.40	3.4	-1.5	125.6	118.6	7.03	17.867		
1,800.0	1,790.1	1,796.5	1,795.7	4.6	3.7	-168.72	-1.9	-4.6	134.8	127.3	7.49	17.993		
1,900.0	1,889.1	1,897.5	1,896.5	4.9	4.0	-172.07	-8.1	-8.6	144.0	136.0	7.97	18.068		
2,000.0	1,988.2	1,997.7	1,996.3	5.3	4.2	-175.32	-15.7	-13.0	152.4	143.9	8.46	18.021		
2,100.0	2,087.2	2,097.8	2,095.8	5.6	4.5	-179.22	-24.7	-19.8	161.0	152.0	8.97	17.946		
2,200.0	2,186.2	2,198.8	2,195.8	6.0	4.8	176.48	-35.8	-28.1	169.4	159.8	9.53	17.769		
2,300.0	2,285.3	2,299.8	2,295.6	6.3	5.1	172.20	-48.5	-36.7	177.4	167.3	10.13	17.515		
2,400.0	2,384.3	2,398.9	2,393.3	6.6	5.4	167.88	-62.5	-46.1	185.7	175.0	10.77	17.243		
2,500.0	2,483.3	2,498.8	2,491.4	7.0	5.7	163.38	-78.0	-56.6	194.8	183.3	11.46	16.995		
2,600.0	2,582.4	2,598.6	2,589.4	7.3	6.1	159.22	-94.3	-66.7	204.1	191.9	12.17	16.773		
2,700.0	2,681.4	2,697.4	2,686.2	7.7	6.4	155.45	-110.7	-76.5	213.9	201.1	12.88	16.606		
2,800.0	2,780.4	2,794.1	2,780.8	8.0	6.8	151.65	-128.0	-87.3	225.1	211.5	13.63	16.517		
2,900.0	2,879.5	2,892.7	2,877.2	8.4	7.1	148.13	-145.4	-98.8	237.6	223.2	14.37	16.531		
3,000.0	2,978.5	2,991.9	2,974.5	8.7	7.5	145.38	-161.5	-109.1	250.5	235.5	15.06	16.636		
3,100.0	3,077.5	3,092.2	3,073.3	9.1	7.8	143.27	-176.4	-118.3	263.5	247.8	15.73	16.750		
3,200.0	3,176.6	3,192.5	3,172.1	9.4	8.1	141.39	-191.4	-126.8	276.0	259.6	16.42	16.813		
3,300.0	3,275.6	3,290.3	3,268.3	9.8	8.5	139.59	-206.6	-135.4	288.8	271.7	17.12	16.867		
3,400.0	3,374.6	3,386.4	3,362.7	10.1	8.8	137.89	-221.8	-144.5	302.5	284.7	17.82	16.976		
3,500.0	3,473.7	3,481.1	3,455.7	10.5	9.2	136.28	-236.8	-154.5	317.4	298.9	18.52	17.136		
3,600.0	3,572.7	3,575.5	3,547.8	10.8	9.6	134.41	-253.5	-166.3	333.9	314.7	19.26	17.336		
3,700.0	3,671.9	3,670.9	3,640.4	11.1	10.0	132.35	-272.7	-179.7	351.1	331.1	20.03	17.530		
3,800.0	3,771.4	3,770.9	3,737.1	11.3	10.4	129.95	-293.5	-193.9	366.7	346.0	20.73	17.692		
3,900.0	3,871.2	3,870.9	3,834.2	11.5	10.8	127.46	-313.6	-207.2	380.1	358.8	21.34	17.811		
4,000.0	3,971.1	3,971.1	3,931.7	11.7	11.2	124.89	-332.6	-219.8	391.6	369.7	21.90	17.881		
4,100.0	4,071.1	4,072.4	4,030.5	11.8	11.6	-86.08	-351.5	-231.7	401.9	379.5	22.44	17.912		
4,200.0	4,171.1	4,177.1	4,133.2	11.9	12.0	-88.61	-369.0	-242.5	411.6	388.6	22.93	17.947		
4,300.0	4,271.1	4,278.6	4,233.0	12.1	12.4	-90.87	-385.3	-251.7	420.7	397.3	23.40	17.982		
4,400.0	4,371.1	4,376.4	4,329.1	12.2	12.8	-93.03	-401.5	-260.2	430.1	406.3	23.84	18.040		
4,500.0	4,471.1	4,476.3	4,427.2	12.4	13.1	-95.08	-417.6	-269.0	440.1	415.8	24.26	18.138		
4,600.0	4,571.1	4,576.1	4,525.6	12.5	13.5	-96.84	-432.2	-277.3	450.0	425.3	24.67	18.238		
4,700.0	4,671.1	4,672.1	4,620.1	12.7	13.8	-98.48	-446.4	-285.6	460.6	435.6	25.07	18.375		
4,800.0	4,771.1	4,771.6	4,718.1	12.8	14.2	-100.12	-461.3	-294.3	471.8	446.3	25.47	18.525		
4,900.0	4,871.1	4,868.2	4,813.4	13.0	14.5	-101.61	-475.5	-302.9	483.3	457.5	25.85	18.696		
5,000.0	4,971.1	4,976.4	4,920.1	13.1	14.9	-103.11	-490.6	-312.4	495.0	468.8	26.24	18.862		

CC - Min centre to center distance or convergent point, SF - min separation factor, ES - min ellipse separation



<b>Company:</b>	BONANZA CREEK ENERGY OPERATING	<b>Local Co-ordinate Reference:</b>	Well Antelope 24-21-20HC
<b>Project:</b>	SEC.20-T5N-R62W	<b>TVD Reference:</b>	WELL @ 4678.0ft (RKB - 13')
<b>Reference Site:</b>	Antelope J-20 Pad Sec.20-T5N-R62W	<b>MD Reference:</b>	WELL @ 4678.0ft (RKB - 13')
<b>Site Error:</b>	0.0ft	<b>North Reference:</b>	True
<b>Reference Well:</b>	Antelope 24-21-20HC	<b>Survey Calculation Method:</b>	Minimum Curvature
<b>Well Error:</b>	0.0ft	<b>Output errors are at</b>	2.00 sigma
<b>Reference Wellbore</b>	Wellbore #1	<b>Database:</b>	Landmark
<b>Reference Design:</b>	Plan #2 (11-13-13)	<b>Offset TVD Reference:</b>	Offset Datum

Offset Design		Antelope J-F-20HZ (Exist) Pad Sec.20-T5N-R62W - Antelope J-F-20HZ (Exist.) - Wellbore #1 - Wellbor										Offset Site Error:		0.0 ft		
Survey Program: 221-MWD														Offset Well Error:		0.0 ft
Reference		Offset		Semi Major Axis			Distance							Warning		
Measured Depth	Vertical Depth	Measured Depth	Vertical Depth	Reference	Offset	Highside Toolface	Offset Wellbore Centre		Between Centres	Between Ellipses	Minimum Separation	Separation Factor				
(ft)	(ft)	(ft)	(ft)	(ft)	(ft)	(°)	+N/-S (ft)	+E/-W (ft)	(ft)	(ft)	(ft)					
5,100.0	5,071.1	5,097.7	5,040.6	13.3	15.2	-104.09	-501.2	-320.1	503.3	476.7	26.64	18.892				
5,200.0	5,171.1	5,214.8	5,157.6	13.4	15.5	-104.46	-505.5	-323.9	507.3	480.3	27.00	18.788				
5,300.0	5,271.1	5,322.2	5,265.0	13.6	15.7	-104.50	-506.4	-325.6	509.1	481.8	27.34	18.620				
5,400.0	5,371.1	5,424.6	5,367.4	13.8	15.8	-104.47	-506.3	-326.7	510.1	482.4	27.67	18.436				
5,500.0	5,471.1	5,527.2	5,469.9	13.9	16.0	-104.43	-506.2	-327.2	510.6	482.6	28.00	18.236				
5,600.0	5,571.1	5,630.5	5,573.3	14.1	16.1	-104.43	-506.1	-327.2	510.5	482.1	28.34	18.015				
5,700.0	5,671.1	5,734.4	5,677.1	14.3	16.3	-104.47	-506.3	-326.3	509.7	481.0	28.68	17.773				
5,800.0	5,771.1	5,838.0	5,780.8	14.4	16.4	-104.51	-506.2	-324.6	508.1	479.1	29.02	17.509				
5,900.0	5,871.1	5,936.1	5,878.8	14.6	16.5	-104.30	-503.9	-323.3	506.3	476.9	29.35	17.252				
6,000.0	5,971.1	6,058.0	5,998.9	14.8	16.5	-102.11	-484.2	-323.9	503.0	473.4	29.64	16.969				
6,100.0	6,070.8	6,179.5	6,112.9	14.9	16.3	-98.81	-442.8	-322.5	496.5	466.8	29.73	16.700				
6,200.0	6,167.6	6,337.0	6,238.9	14.9	15.7	-93.16	-350.7	-314.6	487.1	457.7	29.40	16.570				
6,300.0	6,258.0	6,407.9	6,281.0	14.8	15.4	-90.22	-293.9	-309.8	477.8	448.8	29.06	16.445				
6,400.0	6,338.6	6,493.2	6,325.6	14.7	15.0	-86.68	-221.4	-305.1	473.3	444.7	28.61	16.543				
6,418.8	6,352.4	6,504.7	6,330.8	14.7	14.9	-86.22	-211.2	-304.8	473.2	444.7	28.56	16.572				
6,500.0	6,406.5	6,560.0	6,352.7	14.6	14.7	-83.89	-160.4	-304.7	475.4	447.1	28.28	16.807				
6,600.0	6,459.1	6,650.1	6,381.2	14.6	14.4	-80.92	-75.0	-306.2	480.3	452.3	28.04	17.130				
6,700.0	6,494.6	6,725.6	6,397.6	14.6	14.3	-79.07	-1.4	-308.1	485.5	457.4	28.15	17.249				
6,800.0	6,520.5	6,796.5	6,402.7	15.0	14.4	-77.62	69.2	-312.8	495.8	467.2	28.60	17.335				
6,900.0	6,537.5	6,890.0	6,402.3	15.6	14.8	-74.86	162.4	-320.0	507.6	478.3	29.33	17.308				
7,000.0	6,539.0	6,995.5	6,400.8	16.4	15.5	-74.37	267.7	-326.0	513.9	483.4	30.53	16.832				
7,100.0	6,539.0	7,098.6	6,400.2	17.4	16.2	-74.49	370.6	-331.8	519.6	487.6	32.05	16.211				
7,200.0	6,539.0	7,190.5	6,399.8	18.5	17.0	-74.61	462.3	-337.4	525.7	491.7	33.94	15.489				
7,300.0	6,539.0	7,303.5	6,396.9	19.8	18.2	-74.49	575.1	-343.8	532.1	495.8	36.23	14.684				
7,400.0	6,539.0	7,419.9	6,393.1	21.1	19.5	-74.20	691.4	-347.0	535.8	497.0	38.81	13.807				
7,500.0	6,539.0	7,552.6	6,392.0	22.6	21.0	-73.98	824.0	-343.3	533.1	491.4	41.68	12.789				
7,600.0	6,539.0	7,642.0	6,391.3	24.1	22.2	-73.79	913.3	-339.2	529.1	484.8	44.30	11.943				
7,700.0	6,539.0	7,730.0	6,391.2	25.6	23.3	-73.76	1,001.3	-338.5	528.4	481.5	46.93	11.261				
7,707.4	6,539.0	7,736.0	6,391.2	25.7	23.4	-73.76	1,007.3	-338.5	528.4	481.3	47.12	11.214				
7,800.0	6,539.0	7,825.6	6,391.1	27.2	24.6	-73.78	1,096.9	-339.5	529.5	479.7	49.76	10.641				
7,900.0	6,539.0	7,919.7	6,390.6	28.9	26.0	-73.75	1,190.9	-340.4	530.7	478.0	52.70	10.070				
8,000.0	6,539.0	8,018.0	6,389.7	30.5	27.4	-73.74	1,289.2	-342.7	533.3	477.5	55.72	9.571				
8,100.0	6,539.0	8,101.5	6,389.5	32.2	28.7	-73.82	1,372.7	-345.8	536.9	478.3	58.59	9.163				
8,200.0	6,539.0	8,182.7	6,389.5	34.0	30.0	-74.00	1,453.6	-352.0	544.3	482.8	61.53	8.846				
8,300.0	6,539.0	8,264.2	6,389.7	35.7	31.3	-74.29	1,534.6	-361.1	554.9	490.4	64.53	8.599				
8,400.0	6,539.0	8,438.2	6,387.8	37.5	34.1	-74.42	1,708.1	-372.5	562.8	493.8	69.01	8.155				
8,500.0	6,539.0	8,545.9	6,389.6	39.2	35.8	-74.54	1,815.7	-370.3	560.6	488.1	72.46	7.737				
8,600.0	6,539.0	8,635.6	6,390.3	41.0	37.3	-74.56	1,905.4	-368.6	558.6	483.0	75.64	7.385				
8,700.0	6,539.0	8,740.0	6,391.3	42.8	38.9	-74.63	2,009.8	-367.4	557.4	478.4	79.03	7.053				
8,742.3	6,539.0	8,772.4	6,391.9	43.6	39.4	-74.68	2,042.2	-367.2	557.0	476.7	80.31	6.936				
8,800.0	6,539.0	8,818.9	6,391.7	44.6	40.2	-74.69	2,088.7	-367.8	557.7	475.6	82.11	6.793				
8,900.0	6,539.0	8,913.0	6,391.2	46.5	41.8	-74.67	2,182.8	-368.9	559.2	473.8	85.39	6.549				
9,000.0	6,539.0	8,995.1	6,391.6	48.3	43.2	-74.81	2,264.8	-372.5	563.5	474.9	88.56	6.363				
9,100.0	6,539.0	9,082.5	6,392.0	50.1	44.7	-75.02	2,351.9	-379.0	570.7	478.9	91.85	6.214				
9,200.0	6,539.0	9,211.0	6,388.6	52.0	46.9	-74.90	2,480.1	-386.7	577.4	481.7	95.77	6.029				
9,300.0	6,539.0	9,323.7	6,386.6	53.8	48.8	-74.75	2,592.8	-388.5	579.6	480.2	99.34	5.835				
9,400.0	6,539.0	9,408.4	6,387.0	55.6	50.2	-74.84	2,677.5	-390.4	581.8	479.2	102.56	5.673				
9,500.0	6,539.0	9,501.0	6,386.6	57.5	51.8	-74.91	2,769.9	-394.4	586.1	480.2	105.98	5.531				
9,600.0	6,539.0	9,633.0	6,385.2	59.4	54.1	-74.83	2,901.9	-396.0	587.5	477.5	109.96	5.343				
9,700.0	6,539.0	9,742.0	6,385.7	61.2	55.9	-74.85	3,010.9	-395.1	586.7	473.1	113.58	5.165				
9,783.3	6,539.0	9,814.3	6,386.2	62.8	57.2	-74.89	3,083.2	-394.6	586.0	469.7	116.35	5.037				
9,800.0	6,539.0	9,829.0	6,386.3	63.1	57.5	-74.89	3,097.9	-394.6	586.1	469.1	116.90	5.013				

CC - Min centre to center distance or convergent point, SF - min separation factor, ES - min ellipse separation



<b>Company:</b>	BONANZA CREEK ENERGY OPERATING	<b>Local Co-ordinate Reference:</b>	Well Antelope 24-21-20HC
<b>Project:</b>	SEC.20-T5N-R62W	<b>TVD Reference:</b>	WELL @ 4678.0ft (RKB - 13')
<b>Reference Site:</b>	Antelope J-20 Pad Sec.20-T5N-R62W	<b>MD Reference:</b>	WELL @ 4678.0ft (RKB - 13')
<b>Site Error:</b>	0.0ft	<b>North Reference:</b>	True
<b>Reference Well:</b>	Antelope 24-21-20HC	<b>Survey Calculation Method:</b>	Minimum Curvature
<b>Well Error:</b>	0.0ft	<b>Output errors are at</b>	2.00 sigma
<b>Reference Wellbore</b>	Wellbore #1	<b>Database:</b>	Landmark
<b>Reference Design:</b>	Plan #2 (11-13-13)	<b>Offset TVD Reference:</b>	Offset Datum

<b>Offset Design</b>												<b>Offset Site Error:</b>	0.0 ft
Antelope J-F-20HZ (Exist) Pad Sec.20-T5N-R62W - Antelope J-F-20HZ (Exist.) - Wellbore #1 - Wellbor												<b>Offset Well Error:</b>	0.0 ft
Survey Program: 221-MWD													
Reference		Offset		Semi Major Axis			Distance						
Measured Depth (ft)	Vertical Depth (ft)	Measured Depth (ft)	Vertical Depth (ft)	Reference (ft)	Offset (ft)	Highside Toolface (°)	Offset Wellbore Centre +N/-S (ft)	+E/-W (ft)	Between Centres (ft)	Between Ellipses (ft)	Minimum Separation (ft)	Separation Factor	Warning
9,900.0	6,539.0	9,921.5	6,386.2	65.0	59.1	-74.92	3,190.4	-395.6	587.2	466.9	120.30	4.881	
10,000.0	6,539.0	10,019.9	6,386.0	66.8	60.8	-74.95	3,288.8	-397.5	589.3	465.5	123.82	4.759	
10,100.0	6,539.0	10,140.3	6,384.2	68.7	62.9	-74.82	3,409.1	-399.1	591.4	463.7	127.64	4.633	
10,200.0	6,539.0	10,241.1	6,384.5	70.6	64.6	-74.81	3,509.9	-397.5	589.9	458.8	131.13	4.499	
10,300.0	6,539.0	10,340.3	6,385.7	72.5	66.4	-74.89	3,609.1	-395.9	588.2	453.5	134.67	4.367	
10,383.6	6,539.0	10,413.6	6,385.8	74.0	67.6	-74.88	3,682.3	-395.0	587.2	449.8	137.45	4.272	
10,400.0	6,539.0	10,428.9	6,385.8	74.4	67.9	-74.87	3,697.7	-395.0	587.3	449.3	138.01	4.255	
10,500.0	6,539.0	10,521.3	6,385.5	76.2	69.5	-74.87	3,790.1	-395.7	588.2	446.8	141.41	4.159	
10,600.0	6,539.0	10,643.7	6,383.9	78.1	71.7	-74.71	3,912.5	-395.0	588.2	442.9	145.24	4.049	
10,700.0	6,539.0	10,758.6	6,386.5	80.0	73.6	-74.88	4,027.2	-392.1	585.3	436.2	149.07	3.926	
10,800.0	6,539.0	10,840.7	6,389.1	81.9	75.1	-75.09	4,109.3	-390.7	582.7	430.3	152.43	3.823	
10,873.8	6,539.0	10,905.4	6,390.7	83.3	76.2	-75.23	4,174.0	-390.2	581.8	426.9	154.99	3.754	
10,900.0	6,539.0	10,923.2	6,390.9	83.8	76.5	-75.26	4,191.8	-390.3	582.0	426.2	155.79	3.736	
11,000.0	6,539.0	11,016.8	6,390.6	85.7	78.2	-75.29	4,285.4	-392.7	584.6	425.3	159.29	3.670	
11,095.3	6,539.0	11,097.0	6,389.4	87.5	79.7	-75.22	4,365.5	-394.3	587.2	424.8	162.42	3.615 SF	

<b>Company:</b>	BONANZA CREEK ENERGY OPERATING	<b>Local Co-ordinate Reference:</b>	Well Antelope 24-21-20HC
<b>Project:</b>	SEC.20-T5N-R62W	<b>TVD Reference:</b>	WELL @ 4678.0ft (RKB - 13')
<b>Reference Site:</b>	Antelope J-20 Pad Sec.20-T5N-R62W	<b>MD Reference:</b>	WELL @ 4678.0ft (RKB - 13')
<b>Site Error:</b>	0.0ft	<b>North Reference:</b>	True
<b>Reference Well:</b>	Antelope 24-21-20HC	<b>Survey Calculation Method:</b>	Minimum Curvature
<b>Well Error:</b>	0.0ft	<b>Output errors are at</b>	2.00 sigma
<b>Reference Wellbore</b>	Wellbore #1	<b>Database:</b>	Landmark
<b>Reference Design:</b>	Plan #2 (11-13-13)	<b>Offset TVD Reference:</b>	Offset Datum

Offset Design													Offset Site Error:	0.0 ft
Survey Program: 122-MWD													Offset Well Error:	0.0 ft
Reference	Offset	Semi Major Axis		Distance		Minimum		Separation		Warning				
Measured Depth (ft)	Vertical Depth (ft)	Measured Depth (ft)	Vertical Depth (ft)	Reference (ft)	Offset (ft)	Highside Toolface (°)	Offset Wellbore Centre +N/-S (ft)	+E/-W (ft)	Between Centres (ft)	Between Ellipses (ft)	Minimum Separation (ft)	Separation Factor		
0.0	0.0	1.0	1.0	0.0	0.0	7.26	21.9	2.8	22.0	22.0	0.00	N/A		
100.0	100.0	101.3	101.3	0.1	0.1	6.25	21.1	2.3	21.2	21.0	0.23	92.850		
200.0	200.0	201.6	201.5	0.3	0.3	6.67	18.9	2.2	19.0	18.3	0.65	29.114		
300.0	300.0	301.5	301.3	0.6	0.5	114.36	15.2	5.1	16.7	15.6	1.09	15.343		
307.4	307.4	308.8	308.7	0.6	0.6	116.68	14.9	5.5	16.6	15.5	1.12	14.864 CC, ES		
400.0	399.8	400.4	400.0	0.8	0.8	149.33	10.6	11.1	20.9	19.4	1.58	13.269		
500.0	499.5	498.6	497.6	1.0	1.1	179.53	5.2	19.8	35.3	33.2	2.06	17.135		
600.0	599.3	596.8	595.1	1.2	1.3	-145.63	-1.5	29.3	50.5	48.1	2.48	20.372		
700.0	699.2	694.4	691.7	1.4	1.7	-105.72	-10.5	40.3	65.1	62.2	2.94	22.147		
800.0	798.9	791.7	787.4	1.7	2.0	-77.11	-22.0	53.3	79.6	76.1	3.44	23.148		
900.0	898.5	889.1	882.8	1.9	2.5	-61.30	-35.2	68.1	93.2	89.2	3.97	23.508		
1,000.0	997.8	987.0	978.2	2.1	2.9	-52.27	-49.7	84.3	105.5	100.9	4.53	23.294		
1,100.0	1,096.8	1,084.2	1,072.5	2.4	3.4	-50.72	-65.3	101.7	117.5	112.4	5.12	22.928		
1,200.0	1,195.9	1,180.9	1,166.0	2.7	3.9	-49.84	-81.5	120.8	131.4	125.7	5.73	22.936		
1,300.0	1,294.9	1,277.5	1,258.9	3.0	4.4	-49.11	-98.0	141.3	147.0	140.6	6.34	23.190		
1,400.0	1,393.9	1,373.9	1,351.3	3.3	5.0	-48.54	-114.7	163.1	164.1	157.1	6.95	23.595		
1,500.0	1,493.0	1,472.5	1,445.7	3.6	5.5	-48.23	-131.4	186.1	181.7	174.2	7.56	24.054		
1,600.0	1,592.0	1,573.7	1,543.0	3.9	6.0	-48.33	-147.2	209.5	198.8	190.7	8.15	24.397		
1,700.0	1,691.0	1,679.9	1,645.7	4.3	6.5	-48.94	-161.5	232.1	213.7	204.9	8.76	24.397		
1,800.0	1,790.1	1,785.2	1,748.6	4.6	6.9	-49.87	-173.2	251.0	224.6	215.3	9.38	23.960		
1,900.0	1,889.1	1,886.2	1,847.5	4.9	7.3	-50.78	-183.9	268.0	234.5	224.5	9.98	23.489		
2,000.0	1,988.2	1,987.8	1,947.4	5.3	7.7	-51.79	-193.8	284.5	243.6	233.0	10.61	22.966		
2,100.0	2,087.2	2,089.7	2,047.5	5.6	8.0	-52.58	-204.3	300.0	251.9	240.6	11.24	22.415		
2,200.0	2,186.2	2,193.6	2,149.8	6.0	8.4	-53.06	-216.0	314.3	258.9	247.1	11.86	21.825		
2,300.0	2,285.3	2,299.9	2,254.7	6.3	8.8	-53.58	-227.4	326.9	264.0	251.5	12.50	21.126		
2,400.0	2,384.3	2,400.8	2,354.5	6.6	9.1	-54.11	-237.7	336.9	267.1	253.9	13.12	20.351		
2,500.0	2,483.3	2,496.3	2,448.9	7.0	9.4	-54.54	-247.9	347.5	271.4	257.6	13.74	19.756		
2,600.0	2,582.4	2,592.9	2,544.3	7.3	9.8	-55.14	-257.5	359.5	277.0	262.7	14.37	19.277		
2,700.0	2,681.4	2,687.5	2,637.5	7.7	10.1	-55.80	-266.5	372.8	284.2	269.2	15.01	18.934		
2,800.0	2,780.4	2,784.7	2,733.0	8.0	10.5	-56.33	-276.6	387.8	292.9	277.2	15.66	18.700		
2,900.0	2,879.5	2,885.5	2,831.9	8.4	10.9	-56.54	-288.6	403.5	301.9	285.6	16.31	18.513		
3,000.0	2,978.5	2,989.8	2,934.4	8.7	11.3	-56.82	-300.5	418.5	309.7	292.8	16.96	18.257		
3,100.0	3,077.5	3,094.4	3,037.4	9.1	11.7	-57.00	-312.8	432.0	316.0	298.4	17.61	17.949		
3,200.0	3,176.6	3,197.9	3,139.4	9.4	12.1	-57.16	-325.0	443.9	321.0	302.8	18.24	17.594		
3,300.0	3,275.6	3,295.8	3,236.2	9.8	12.4	-57.47	-335.5	454.9	325.6	306.7	18.88	17.247		
3,400.0	3,374.6	3,390.0	3,329.2	10.1	12.7	-57.95	-344.7	466.6	331.3	311.8	19.51	16.978		
3,500.0	3,473.7	3,482.0	3,419.9	10.5	13.1	-58.60	-352.5	480.1	339.2	319.0	20.16	16.823		
3,600.0	3,572.7	3,575.7	3,511.9	10.8	13.5	-59.23	-360.6	495.6	349.1	328.3	20.83	16.763		
3,700.0	3,671.9	3,673.1	3,607.2	11.1	13.9	-59.60	-370.8	512.9	360.7	339.2	21.45	16.812		
3,800.0	3,771.4	3,773.2	3,704.8	11.3	14.3	-59.16	-384.1	530.6	374.1	352.2	21.91	17.071		
3,900.0	3,871.2	3,873.7	3,802.9	11.5	14.8	-58.32	-397.5	547.8	388.7	366.5	22.30	17.434		
4,000.0	3,971.1	3,971.2	3,898.0	11.7	15.2	-57.09	-411.4	564.3	405.4	382.8	22.59	17.946		
4,100.0	4,071.1	4,074.9	3,999.2	11.8	15.6	96.50	-426.1	581.3	423.1	400.2	22.85	18.516		
4,200.0	4,171.1	4,180.2	4,102.4	11.9	16.1	98.05	-439.7	597.0	439.6	416.6	23.09	19.040		
4,300.0	4,271.1	4,281.6	4,202.3	12.1	16.5	99.22	-451.0	611.1	455.1	431.7	23.36	19.485		
4,400.0	4,371.1	4,384.1	4,303.2	12.2	16.8	100.23	-461.5	625.0	470.3	446.6	23.63	19.899		
4,500.0	4,471.1	4,494.8	4,412.7	12.4	17.2	101.09	-471.3	638.5	484.0	460.0	23.94	20.216		
4,600.0	4,571.1	4,613.0	4,530.2	12.5	17.5	101.73	-479.0	649.3	494.2	469.9	24.27	20.360		
4,700.0	4,671.1	4,722.7	4,639.5	12.7	17.8	102.10	-483.8	656.7	501.7	477.1	24.60	20.392		
4,800.0	4,771.1	4,829.0	4,745.6	12.8	18.0	102.31	-486.9	662.4	507.5	482.6	24.93	20.356		
4,900.0	4,871.1	4,937.5	4,854.0	13.0	18.2	102.40	-488.8	666.9	511.9	486.7	25.27	20.256		
5,000.0	4,971.1	5,043.2	4,959.7	13.1	18.4	102.38	-489.3	669.9	514.8	489.2	25.62	20.097		

CC - Min centre to center distance or convergent point, SF - min separation factor, ES - min ellipse separation

<b>Company:</b>	BONANZA CREEK ENERGY OPERATING	<b>Local Co-ordinate Reference:</b>	Well Antelope 24-21-20HC
<b>Project:</b>	SEC.20-T5N-R62W	<b>TVD Reference:</b>	WELL @ 4678.0ft (RKB - 13')
<b>Reference Site:</b>	Antelope J-20 Pad Sec.20-T5N-R62W	<b>MD Reference:</b>	WELL @ 4678.0ft (RKB - 13')
<b>Site Error:</b>	0.0ft	<b>North Reference:</b>	True
<b>Reference Well:</b>	Antelope 24-21-20HC	<b>Survey Calculation Method:</b>	Minimum Curvature
<b>Well Error:</b>	0.0ft	<b>Output errors are at</b>	2.00 sigma
<b>Reference Wellbore</b>	Wellbore #1	<b>Database:</b>	Landmark
<b>Reference Design:</b>	Plan #2 (11-13-13)	<b>Offset TVD Reference:</b>	Offset Datum

Offset Design		Antelope J-F-20HZ (Exist) Pad Sec.20-T5N-R62W - Antelope O-K-20HZ (Exist.) - Wellbore #1 - Wellbo										Offset Site Error:		0.0 ft		
Survey Program: 122-MWD														Offset Well Error:		0.0 ft
Reference		Offset		Semi Major Axis			Distance							Warning		
Measured Depth	Vertical Depth	Measured Depth	Vertical Depth	Reference	Offset	Highside Toolface	Offset Wellbore Centre		Between Centres	Between Ellipses	Minimum Separation	Separation Factor				
(ft)	(ft)	(ft)	(ft)	(ft)	(ft)	(°)	+N/-S (ft)	+E/-W (ft)	(ft)	(ft)	(ft)					
5,100.0	5,071.1	5,146.0	5,062.4	13.3	18.5	102.33	-489.3	672.1	516.9	491.0	25.96	19.912				
5,200.0	5,171.1	5,246.4	5,162.8	13.4	18.6	102.29	-489.3	673.9	518.7	492.4	26.30	19.723				
5,300.0	5,271.1	5,345.2	5,261.6	13.6	18.8	102.26	-489.4	675.9	520.6	494.0	26.64	19.547				
5,400.0	5,371.1	5,448.5	5,364.9	13.8	18.9	102.20	-489.2	677.7	522.4	495.4	26.98	19.358				
5,500.0	5,471.1	5,548.5	5,464.9	13.9	19.1	102.09	-488.5	679.2	523.7	496.4	27.33	19.160				
5,600.0	5,571.1	5,650.1	5,566.4	14.1	19.2	101.95	-487.6	680.8	525.0	497.3	27.69	18.961				
5,700.0	5,671.1	5,751.9	5,668.2	14.3	19.3	101.84	-486.8	681.9	525.9	497.8	28.04	18.752				
5,800.0	5,771.1	5,856.5	5,772.8	14.4	19.5	101.72	-485.9	682.8	526.5	498.1	28.41	18.536				
5,900.0	5,871.1	5,981.5	5,896.6	14.6	19.5	100.11	-470.6	681.1	522.6	493.8	28.87	18.100				
6,000.0	5,971.1	6,094.2	6,003.3	14.8	19.4	96.22	-434.9	681.1	517.9	488.5	29.43	17.597				
6,100.0	6,070.8	6,190.2	6,088.1	14.9	19.2	92.10	-390.1	680.0	513.4	483.5	29.84	17.207				
6,200.0	6,167.6	6,285.7	6,165.2	14.9	18.9	88.26	-333.8	678.7	511.7	481.6	30.02	17.045				
6,236.7	6,201.7	6,319.3	6,190.3	14.9	18.8	86.97	-311.5	678.3	511.7	481.7	30.02	17.046				
6,300.0	6,258.0	6,383.6	6,235.0	14.8	18.7	84.65	-265.4	676.7	511.6	481.7	29.97	17.070				
6,303.9	6,261.4	6,386.9	6,237.2	14.8	18.6	84.53	-262.8	676.6	511.6	481.7	29.97	17.073				
6,400.0	6,338.6	6,461.3	6,279.9	14.7	18.4	81.73	-202.1	674.7	512.9	483.1	29.77	17.229				
6,500.0	6,406.5	6,556.2	6,320.9	14.6	18.1	78.38	-116.7	672.5	515.6	486.1	29.49	17.485				
6,600.0	6,459.1	6,643.9	6,350.0	14.6	17.9	76.17	-34.0	668.7	516.1	486.8	29.32	17.603				
6,700.0	6,494.6	6,741.1	6,374.2	14.6	17.8	75.09	59.8	663.3	513.3	483.7	29.57	17.357				
6,800.0	6,520.5	6,820.0	6,381.9	15.0	17.9	73.56	138.1	657.8	510.9	480.6	30.21	16.912				
6,900.0	6,537.5	6,907.8	6,382.6	15.6	18.1	71.98	225.7	652.2	509.5	478.3	31.22	16.321				
7,000.0	6,539.0	6,995.0	6,382.7	16.4	18.5	71.88	312.9	648.6	505.9	473.3	32.56	15.537				
7,100.0	6,539.0	7,092.4	6,383.5	17.4	19.2	71.93	410.3	647.8	504.7	470.5	34.22	14.748				
7,200.0	6,539.0	7,181.0	6,384.6	18.5	20.0	72.02	498.8	647.0	503.4	467.2	36.12	13.936				
7,200.1	6,539.0	7,181.0	6,384.6	18.5	20.0	72.02	498.8	647.0	503.4	467.2	36.12	13.936				
7,300.0	6,539.0	7,260.3	6,386.6	19.8	20.7	72.34	578.0	650.0	506.0	467.9	38.13	13.272				
7,400.0	6,539.0	7,355.0	6,387.0	21.1	21.8	72.58	672.5	655.8	511.5	471.1	40.46	12.643				
7,500.0	6,539.0	7,457.9	6,387.0	22.6	23.0	72.74	775.3	661.1	516.3	473.3	43.02	12.002				
7,600.0	6,539.0	7,556.0	6,386.9	24.1	24.2	72.89	873.3	666.0	521.0	475.3	45.71	11.399				
7,700.0	6,539.0	7,661.3	6,385.6	25.6	25.6	72.91	978.5	671.0	525.8	477.3	48.49	10.844				
7,800.0	6,539.0	7,750.9	6,385.1	27.2	26.7	72.99	1,068.0	675.2	530.4	479.2	51.16	10.366				
7,900.0	6,539.0	7,858.2	6,385.9	28.9	28.2	73.24	1,175.1	680.7	534.9	480.7	54.22	9.865				
8,000.0	6,539.0	7,956.6	6,386.6	30.5	29.6	73.43	1,273.4	684.6	538.4	481.1	57.22	9.408				
8,100.0	6,539.0	8,081.9	6,387.0	32.2	31.4	73.60	1,398.7	689.1	541.9	481.2	60.69	8.928				
8,200.0	6,539.0	8,170.9	6,388.2	34.0	32.7	73.75	1,487.6	690.2	542.6	478.9	63.74	8.512				
8,300.0	6,539.0	8,289.7	6,388.3	35.7	34.5	73.78	1,606.4	691.0	543.2	476.0	67.25	8.078				
8,400.0	6,539.0	8,398.9	6,388.1	37.5	36.2	73.71	1,715.6	689.5	541.9	471.2	70.64	7.671				
8,500.0	6,539.0	8,486.9	6,388.8	39.2	37.6	73.72	1,803.5	687.5	539.4	465.7	73.73	7.316				
8,600.0	6,539.0	8,589.6	6,388.0	41.0	39.2	73.58	1,906.2	685.7	537.8	460.7	77.06	6.979				
8,700.0	6,539.0	8,686.7	6,387.6	42.8	40.7	73.51	2,003.4	684.6	536.7	456.4	80.32	6.683				
8,761.8	6,539.0	8,743.9	6,388.0	43.9	41.6	73.53	2,060.5	684.3	536.2	453.9	82.31	6.515				
8,800.0	6,539.0	8,773.7	6,388.6	44.6	42.1	73.60	2,090.3	684.7	536.6	453.1	83.46	6.429				
8,900.0	6,539.0	8,869.9	6,389.7	46.5	43.7	73.77	2,186.5	686.5	537.9	451.1	86.83	6.195				
9,000.0	6,539.0	8,976.6	6,390.4	48.3	45.4	73.89	2,293.1	688.2	539.2	448.8	90.35	5.968				
9,100.0	6,539.0	9,075.5	6,390.5	50.1	47.1	73.93	2,392.0	689.5	540.2	446.5	93.77	5.762				
9,200.0	6,539.0	9,180.4	6,389.3	52.0	48.8	73.83	2,496.9	690.4	541.3	444.1	97.22	5.568				
9,300.0	6,539.0	9,278.5	6,390.3	53.8	50.4	73.95	2,595.1	691.0	541.5	440.9	100.63	5.381				
9,400.0	6,539.0	9,392.0	6,390.2	55.6	52.3	73.93	2,708.5	690.7	541.2	436.9	104.32	5.188				
9,499.2	6,539.0	9,481.4	6,388.9	57.5	53.8	73.77	2,797.9	689.7	540.4	432.9	107.53	5.025				
9,500.0	6,539.0	9,482.0	6,388.9	57.5	53.9	73.77	2,798.5	689.7	540.4	432.8	107.56	5.024				
9,600.0	6,539.0	9,570.9	6,387.1	59.4	55.4	73.61	2,887.4	690.7	541.9	431.2	110.76	4.893				
9,700.0	6,539.0	9,679.3	6,389.0	61.2	57.2	73.84	2,995.7	692.5	542.9	428.4	114.42	4.745				

CC - Min centre to center distance or convergent point, SF - min separation factor, ES - min ellipse separation

<b>Company:</b>	BONANZA CREEK ENERGY OPERATING	<b>Local Co-ordinate Reference:</b>	Well Antelope 24-21-20HC
<b>Project:</b>	SEC.20-T5N-R62W	<b>TVD Reference:</b>	WELL @ 4678.0ft (RKB - 13')
<b>Reference Site:</b>	Antelope J-20 Pad Sec.20-T5N-R62W	<b>MD Reference:</b>	WELL @ 4678.0ft (RKB - 13')
<b>Site Error:</b>	0.0ft	<b>North Reference:</b>	True
<b>Reference Well:</b>	Antelope 24-21-20HC	<b>Survey Calculation Method:</b>	Minimum Curvature
<b>Well Error:</b>	0.0ft	<b>Output errors are at</b>	2.00 sigma
<b>Reference Wellbore</b>	Wellbore #1	<b>Database:</b>	Landmark
<b>Reference Design:</b>	Plan #2 (11-13-13)	<b>Offset TVD Reference:</b>	Offset Datum

Offset Design		Antelope J-F-20HZ (Exist) Pad Sec.20-T5N-R62W - Antelope O-K-20HZ (Exist.) - Wellbore #1 - Wellbo										Offset Site Error:		0.0 ft			
Survey Program: 122-MWD														Offset Well Error:		0.0 ft	
Reference		Offset		Semi Major Axis			Distance							Warning			
Measured Depth	Vertical Depth	Measured Depth	Vertical Depth	Reference	Offset	Highside Toolface	Offset Wellbore Centre		Between Centres	Between Ellipses	Minimum Separation	Separation Factor					
(ft)	(ft)	(ft)	(ft)	(ft)	(ft)	(°)	+N/-S (ft)	+E/-W (ft)	(ft)	(ft)	(ft)						
9,800.0	6,539.0	9,776.7	6,390.1	63.1	58.8	73.99	3,093.1	693.8	543.7	425.8	117.93	4.611					
9,900.0	6,539.0	9,866.3	6,389.2	65.0	60.4	73.95	3,182.7	695.5	545.7	424.4	121.25	4.500					
10,000.0	6,539.0	9,966.4	6,388.7	66.8	62.1	74.00	3,282.7	699.2	549.3	424.6	124.71	4.404					
10,100.0	6,539.0	10,069.1	6,389.1	68.7	63.8	74.14	3,385.4	702.7	552.3	424.0	128.29	4.305					
10,200.0	6,539.0	10,148.8	6,387.9	70.6	65.2	74.10	3,465.0	705.7	556.3	424.9	131.43	4.233					
10,300.0	6,539.0	10,244.3	6,386.5	72.5	66.8	74.11	3,560.3	710.8	561.8	427.0	134.82	4.167					
10,400.0	6,539.0	10,352.8	6,386.0	74.4	68.6	74.26	3,668.6	718.0	568.2	429.7	138.50	4.103					
10,500.0	6,539.0	10,460.7	6,386.6	76.2	70.5	74.46	3,776.3	723.6	572.9	430.7	142.21	4.029					
10,600.0	6,539.0	10,553.0	6,387.3	78.1	72.1	74.65	3,868.5	728.2	577.4	431.8	145.67	3.964					
10,700.0	6,539.0	10,657.8	6,387.0	80.0	73.9	74.78	3,973.1	734.5	583.3	434.0	149.31	3.907					
10,800.0	6,539.0	10,784.0	6,387.8	81.9	76.0	74.92	4,099.3	737.2	585.0	431.6	153.34	3.815					
10,882.2	6,539.0	10,865.6	6,387.7	83.5	77.5	74.90	4,180.8	737.0	584.7	428.5	156.24	3.742					
10,900.0	6,539.0	10,881.0	6,387.6	83.8	77.7	74.90	4,196.3	737.0	584.8	427.9	156.82	3.729					
11,000.0	6,539.0	10,981.3	6,385.4	85.7	79.5	74.69	4,296.6	737.5	585.7	425.4	160.30	3.654					
11,095.3	6,539.0	11,027.0	6,383.7	87.5	80.3	74.53	4,342.2	737.3	588.2	425.4	162.75	3.614 SF					

<b>Company:</b>	BONANZA CREEK ENERGY OPERATING	<b>Local Co-ordinate Reference:</b>	Well Antelope 24-21-20HC
<b>Project:</b>	SEC.20-T5N-R62W	<b>TVD Reference:</b>	WELL @ 4678.0ft (RKB - 13')
<b>Reference Site:</b>	Antelope J-20 Pad Sec.20-T5N-R62W	<b>MD Reference:</b>	WELL @ 4678.0ft (RKB - 13')
<b>Site Error:</b>	0.0ft	<b>North Reference:</b>	True
<b>Reference Well:</b>	Antelope 24-21-20HC	<b>Survey Calculation Method:</b>	Minimum Curvature
<b>Well Error:</b>	0.0ft	<b>Output errors are at</b>	2.00 sigma
<b>Reference Wellbore</b>	Wellbore #1	<b>Database:</b>	Landmark
<b>Reference Design:</b>	Plan #2 (11-13-13)	<b>Offset TVD Reference:</b>	Offset Datum

Reference Depths are relative to WELL @ 4678.0ft (RKB - 13')

Offset Depths are relative to Offset Datum

Central Meridian is -105.500000 °

Coordinates are relative to: Antelope 24-21-20HC

Coordinate System is US State Plane 1983, Colorado Northern Zone

Grid Convergence at Surface is: 0.74°



Reference Depths are relative to WELL @ 4678.0ft (RKB - 13')	Coordinates are relative to: Antelope 24-21-20HC
Offset Depths are relative to Offset Datum	Coordinate System is US State Plane 1983, Colorado Northern Zone
Central Meridian is -105.500000 °	Grid Convergence at Surface is: 0.74°

