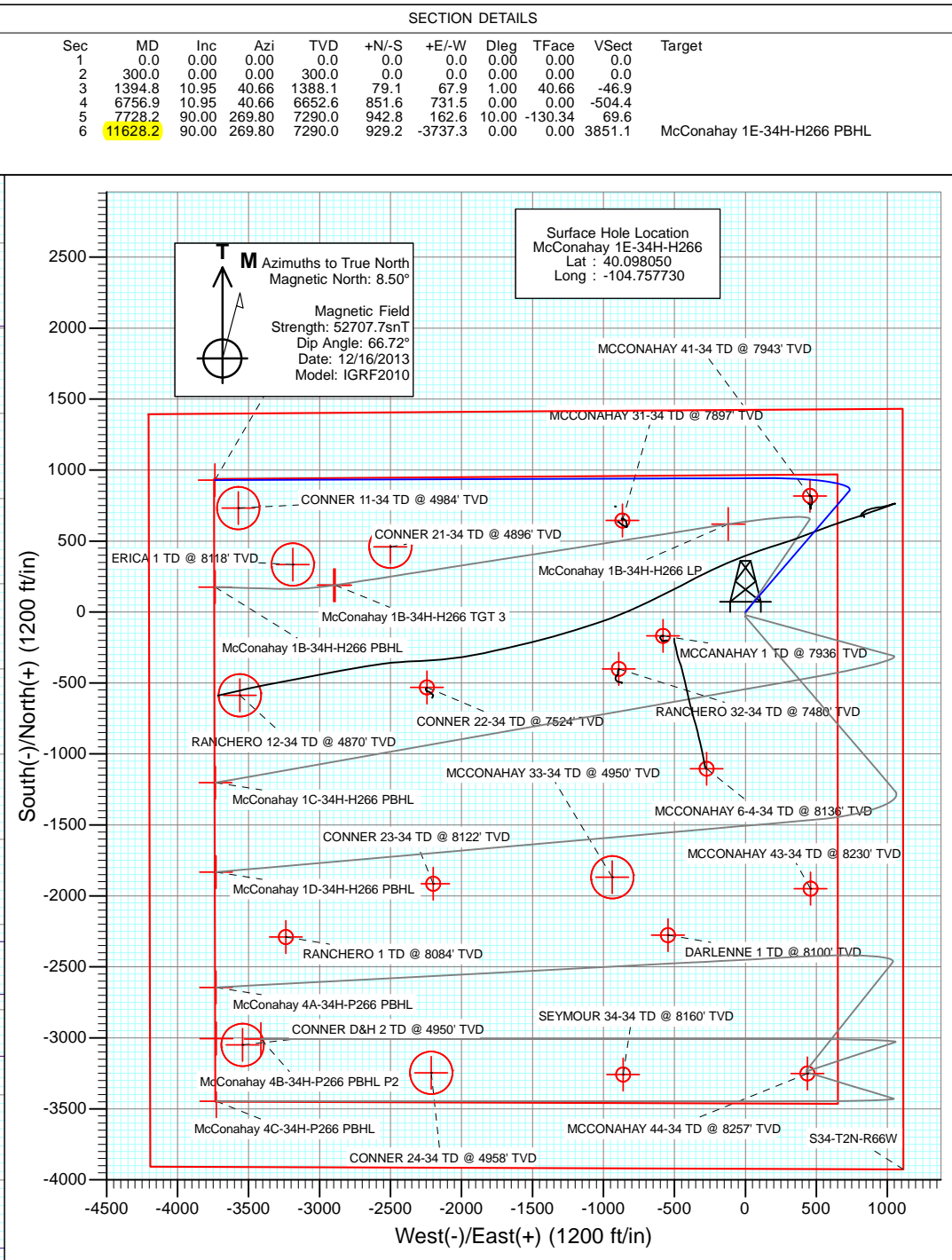
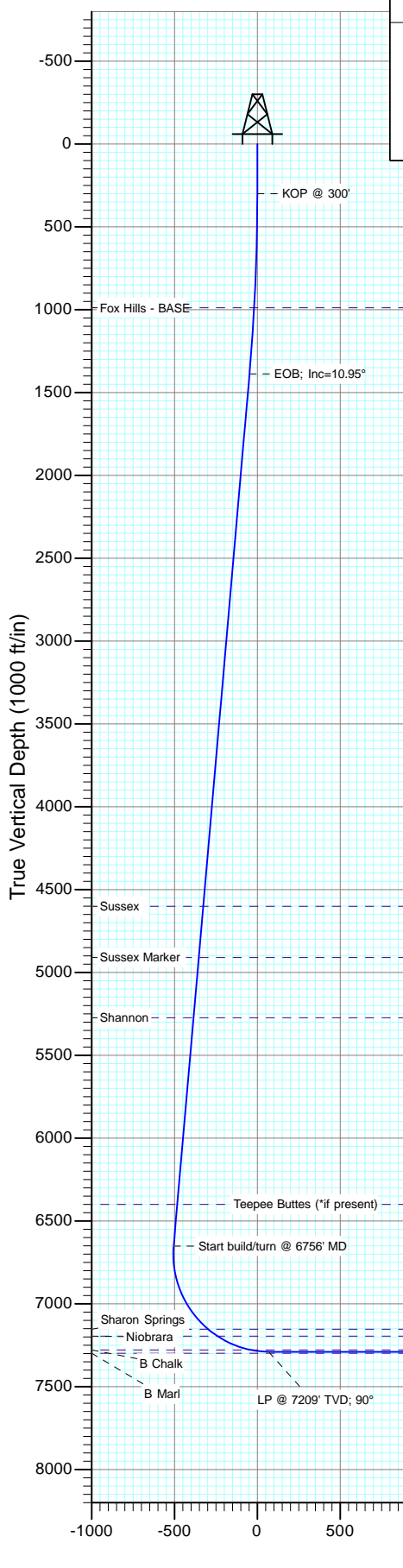




Project: DJ Wattenberg
Site: S34-T2N-R66W (McConahay)
Well: McConahay 1E-34H-H266
Wellbore: Hz
Design: Plan #1



DESIGN TARGET DETAILS

Name	+N/-S	+E/-W	Northing	Easting	Latitude	Longitude
McConahay 1E-34H-H266 PBHL	929.2	-3737.3	1280333.59	3203909.63	40.100600	-104.771090

Plan #1
McConahay 1E-34H-H266
13xxx; LR
WELL @ 5074.0ft (Original Well Elev)
Ground Elevation @ 5061.0
North American Datum 1983
Well McConahay 1E-34H-H266, True North

Planning Report

Database:	USA EDM 5000 Multi Users DB	Local Co-ordinate Reference:	Well McConahay 1E-34H-H266
Company:	EnCana Oil & Gas (USA) Inc	TVD Reference:	WELL @ 5074.0ft (Original Well Elev)
Project:	DJ Wattenberg	MD Reference:	WELL @ 5074.0ft (Original Well Elev)
Site:	S34-T2N-R66W (McConahay)	North Reference:	True
Well:	McConahay 1E-34H-H266	Survey Calculation Method:	Minimum Curvature
Wellbore:	Hz		
Design:	Plan #1		

Project	DJ Wattenberg		
Map System:	US State Plane 1983	System Datum:	Mean Sea Level
Geo Datum:	North American Datum 1983		
Map Zone:	Colorado Northern Zone		

Site		S34-T2N-R66W (McConahay)			
Site Position:		Northing:	1,280,109.37 ft	Latitude:	40.099880
From:	Lat/Long	Easting:	3,208,491.04 ft	Longitude:	-104.754720
Position Uncertainty:	0.0 ft	Slot Radius:	13.200 in	Grid Convergence:	0.48 °

Well	McConahay 1E-34H-H266					
Well Position	+N/-S	0.0 ft	Northing:	1,279,435.71 ft	Latitude:	40.098050
	+E/-W	0.0 ft	Easting:	3,207,654.62 ft	Longitude:	-104.757730
Position Uncertainty		0.0 ft	Wellhead Elevation:	ft	Ground Level:	5,061.0 ft

Wellbore	Hz				
Magnetics	Model Name	Sample Date	Declination (°)	Dip Angle (°)	Field Strength (nT)
	IGRF2010	12/16/2013	8.50	66.72	52,708

Design	Plan #1				
Audit Notes:					
Version:	Phase:	PLAN	Tie On Depth:	0.0	
Vertical Section:	Depth From (TVD) (ft)	+N/-S (ft)	+E/-W (ft)	Direction (°)	
	0.0	0.0	0.0	283.96	

Plan Sections										
Measured Depth (ft)	Inclination (°)	Azimuth (°)	Vertical Depth (ft)	+N/-S (ft)	+E/-W (ft)	Dogleg Rate (°/100ft)	Build Rate (°/100ft)	Turn Rate (°/100ft)	TFO (°)	Target
0.0	0.00	0.00	0.0	0.0	0.0	0.00	0.00	0.00	0.00	
300.0	0.00	0.00	300.0	0.0	0.0	0.00	0.00	0.00	0.00	
1,394.8	10.95	40.66	1,388.1	79.1	67.9	1.00	1.00	0.00	40.66	
6,756.9	10.95	40.66	6,652.6	851.6	731.5	0.00	0.00	0.00	0.00	
7,728.2	90.00	269.80	7,290.0	942.8	162.6	10.00	8.14	-13.47	-130.34	
11,628.2	90.00	269.80	7,290.0	929.2	-3,737.3	0.00	0.00	0.00	0.00	McConahay 1E-34H-H

Planning Report

Database:	USA EDM 5000 Multi Users DB	Local Co-ordinate Reference:	Well McConahay 1E-34H-H266
Company:	EnCana Oil & Gas (USA) Inc	TVD Reference:	WELL @ 5074.0ft (Original Well Elev)
Project:	DJ Wattenberg	MD Reference:	WELL @ 5074.0ft (Original Well Elev)
Site:	S34-T2N-R66W (McConahay)	North Reference:	True
Well:	McConahay 1E-34H-H266	Survey Calculation Method:	Minimum Curvature
Wellbore:	Hz		
Design:	Plan #1		

Planned Survey

Measured Depth (ft)	Inclination (°)	Azimuth (°)	Vertical Depth (ft)	+N/-S (ft)	+E/-W (ft)	Vertical Section (ft)	Dogleg Rate (°/100ft)	Build Rate (°/100ft)	Comments / Formations
0.0	0.00	0.00	0.0	0.0	0.0	0.0	0.00	0.00	
100.0	0.00	0.00	100.0	0.0	0.0	0.0	0.00	0.00	
200.0	0.00	0.00	200.0	0.0	0.0	0.0	0.00	0.00	
300.0	0.00	0.00	300.0	0.0	0.0	0.0	0.00	0.00	KOP @ 300'
400.0	1.00	40.66	400.0	0.7	0.6	-0.4	1.00	1.00	
500.0	2.00	40.66	500.0	2.6	2.3	-1.6	1.00	1.00	
600.0	3.00	40.66	599.9	6.0	5.1	-3.5	1.00	1.00	
700.0	4.00	40.66	699.7	10.6	9.1	-6.3	1.00	1.00	
800.0	5.00	40.66	799.4	16.5	14.2	-9.8	1.00	1.00	
900.0	6.00	40.66	898.9	23.8	20.5	-14.1	1.00	1.00	
990.7	6.91	40.66	989.0	31.5	27.1	-18.7	1.00	1.00	Fox Hills - BASE
1,000.0	7.00	40.66	998.3	32.4	27.8	-19.2	1.00	1.00	
1,100.0	8.00	40.66	1,097.4	42.3	36.3	-25.1	1.00	1.00	
1,200.0	9.00	40.66	1,196.3	53.5	46.0	-31.7	1.00	1.00	
1,300.0	10.00	40.66	1,294.9	66.0	56.7	-39.1	1.00	1.00	
1,394.8	10.95	40.66	1,388.1	79.1	67.9	-46.9	1.00	1.00	EOB; Inc=10.95°
1,400.0	10.95	40.66	1,393.3	79.9	68.6	-47.3	0.00	0.00	
1,500.0	10.95	40.66	1,491.4	94.3	81.0	-55.8	0.00	0.00	
1,600.0	10.95	40.66	1,589.6	108.7	93.3	-64.4	0.00	0.00	
1,700.0	10.95	40.66	1,687.8	123.1	105.7	-72.9	0.00	0.00	
1,800.0	10.95	40.66	1,786.0	137.5	118.1	-81.4	0.00	0.00	
1,900.0	10.95	40.66	1,884.2	151.9	130.5	-90.0	0.00	0.00	
2,000.0	10.95	40.66	1,982.3	166.3	142.8	-98.5	0.00	0.00	
2,100.0	10.95	40.66	2,080.5	180.7	155.2	-107.0	0.00	0.00	
2,200.0	10.95	40.66	2,178.7	195.1	167.6	-115.6	0.00	0.00	
2,300.0	10.95	40.66	2,276.9	209.5	180.0	-124.1	0.00	0.00	
2,400.0	10.95	40.66	2,375.1	223.9	192.3	-132.6	0.00	0.00	
2,500.0	10.95	40.66	2,473.2	238.3	204.7	-141.2	0.00	0.00	
2,600.0	10.95	40.66	2,571.4	252.7	217.1	-149.7	0.00	0.00	
2,700.0	10.95	40.66	2,669.6	267.1	229.5	-158.2	0.00	0.00	
2,800.0	10.95	40.66	2,767.8	281.5	241.8	-166.8	0.00	0.00	
2,900.0	10.95	40.66	2,866.0	295.9	254.2	-175.3	0.00	0.00	
3,000.0	10.95	40.66	2,964.1	310.3	266.6	-183.8	0.00	0.00	
3,100.0	10.95	40.66	3,062.3	324.8	279.0	-192.4	0.00	0.00	
3,200.0	10.95	40.66	3,160.5	339.2	291.3	-200.9	0.00	0.00	
3,300.0	10.95	40.66	3,258.7	353.6	303.7	-209.4	0.00	0.00	
3,400.0	10.95	40.66	3,356.9	368.0	316.1	-218.0	0.00	0.00	
3,500.0	10.95	40.66	3,455.0	382.4	328.5	-226.5	0.00	0.00	
3,600.0	10.95	40.66	3,553.2	396.8	340.8	-235.0	0.00	0.00	
3,700.0	10.95	40.66	3,651.4	411.2	353.2	-243.6	0.00	0.00	
3,800.0	10.95	40.66	3,749.6	425.6	365.6	-252.1	0.00	0.00	
3,900.0	10.95	40.66	3,847.8	440.0	378.0	-260.6	0.00	0.00	
4,000.0	10.95	40.66	3,945.9	454.4	390.3	-269.2	0.00	0.00	
4,100.0	10.95	40.66	4,044.1	468.8	402.7	-277.7	0.00	0.00	
4,200.0	10.95	40.66	4,142.3	483.2	415.1	-286.2	0.00	0.00	
4,300.0	10.95	40.66	4,240.5	497.6	427.5	-294.8	0.00	0.00	
4,400.0	10.95	40.66	4,338.7	512.0	439.8	-303.3	0.00	0.00	
4,500.0	10.95	40.66	4,436.8	526.4	452.2	-311.8	0.00	0.00	
4,600.0	10.95	40.66	4,535.0	540.8	464.6	-320.4	0.00	0.00	
4,667.2	10.95	40.66	4,601.0	550.5	472.9	-326.1	0.00	0.00	Sussex
4,700.0	10.95	40.66	4,633.2	555.2	477.0	-328.9	0.00	0.00	
4,800.0	10.95	40.66	4,731.4	569.7	489.3	-337.4	0.00	0.00	

Planning Report

Database:	USA EDM 5000 Multi Users DB	Local Co-ordinate Reference:	Well McConahay 1E-34H-H266
Company:	EnCana Oil & Gas (USA) Inc	TVD Reference:	WELL @ 5074.0ft (Original Well Elev)
Project:	DJ Wattenberg	MD Reference:	WELL @ 5074.0ft (Original Well Elev)
Site:	S34-T2N-R66W (McConahay)	North Reference:	True
Well:	McConahay 1E-34H-H266	Survey Calculation Method:	Minimum Curvature
Wellbore:	Hz		
Design:	Plan #1		

Planned Survey

Measured Depth (ft)	Inclination (°)	Azimuth (°)	Vertical Depth (ft)	+N/-S (ft)	+E/-W (ft)	Vertical Section (ft)	Dogleg Rate (°/100ft)	Build Rate (°/100ft)	Comments / Formations
4,900.0	10.95	40.66	4,829.6	584.1	501.7	-346.0	0.00	0.00	
4,981.9	10.95	40.66	4,910.0	595.9	511.8	-352.9	0.00	0.00	Sussex Marker
5,000.0	10.95	40.66	4,927.7	598.5	514.1	-354.5	0.00	0.00	
5,100.0	10.95	40.66	5,025.9	612.9	526.4	-363.0	0.00	0.00	
5,200.0	10.95	40.66	5,124.1	627.3	538.8	-371.6	0.00	0.00	
5,300.0	10.95	40.66	5,222.3	641.7	551.2	-380.1	0.00	0.00	
5,352.7	10.95	40.66	5,274.0	649.3	557.7	-384.6	0.00	0.00	Shannon
5,400.0	10.95	40.66	5,320.5	656.1	563.6	-388.6	0.00	0.00	
5,500.0	10.95	40.66	5,418.6	670.5	575.9	-397.2	0.00	0.00	
5,600.0	10.95	40.66	5,516.8	684.9	588.3	-405.7	0.00	0.00	
5,700.0	10.95	40.66	5,615.0	699.3	600.7	-414.2	0.00	0.00	
5,800.0	10.95	40.66	5,713.2	713.7	613.1	-422.8	0.00	0.00	
5,900.0	10.95	40.66	5,811.4	728.1	625.4	-431.3	0.00	0.00	
6,000.0	10.95	40.66	5,909.5	742.5	637.8	-439.8	0.00	0.00	
6,100.0	10.95	40.66	6,007.7	756.9	650.2	-448.4	0.00	0.00	
6,200.0	10.95	40.66	6,105.9	771.3	662.6	-456.9	0.00	0.00	
6,300.0	10.95	40.66	6,204.1	785.7	674.9	-465.4	0.00	0.00	
6,400.0	10.95	40.66	6,302.3	800.1	687.3	-474.0	0.00	0.00	
6,499.5	10.95	40.66	6,400.0	814.5	699.6	-482.4	0.00	0.00	Teepee Buttes (*if present)
6,500.0	10.95	40.66	6,400.4	814.6	699.7	-482.5	0.00	0.00	
6,600.0	10.95	40.66	6,498.6	829.0	712.1	-491.0	0.00	0.00	
6,700.0	10.95	40.66	6,596.8	843.4	724.4	-499.5	0.00	0.00	
6,756.9	10.95	40.66	6,652.6	851.6	731.5	-504.4	0.00	0.00	Start build/turn @ 6756' MD
6,800.0	8.79	18.62	6,695.1	857.8	735.2	-506.5	10.00	-5.01	
6,900.0	10.97	318.78	6,793.9	872.2	731.4	-499.3	10.00	2.19	
7,000.0	19.03	294.89	6,890.5	886.3	710.2	-475.4	10.00	8.06	
7,100.0	28.33	285.55	6,982.0	899.5	672.5	-435.6	10.00	9.30	
7,200.0	37.96	280.61	7,065.6	911.6	619.3	-381.0	10.00	9.64	
7,300.0	47.73	277.44	7,138.9	922.1	552.2	-313.4	10.00	9.77	
7,323.0	49.99	276.85	7,154.0	924.2	535.0	-296.2	10.00	9.81	Sharon Springs
7,391.7	56.75	275.30	7,195.0	930.0	480.2	-241.6	10.00	9.84	Niobrara
7,400.0	57.56	275.13	7,199.5	930.7	473.3	-234.7	10.00	9.85	
7,500.0	67.43	273.29	7,245.6	937.1	384.9	-147.4	10.00	9.87	
7,600.0	77.31	271.69	7,275.9	941.2	289.8	-54.2	10.00	9.88	
7,615.2	78.82	271.46	7,279.0	941.6	275.0	-39.6	10.00	9.89	B Chalk
7,700.0	87.21	270.21	7,289.3	942.8	190.9	42.3	10.00	9.89	
7,728.2	90.00	269.80	7,290.0	942.8	162.6	69.6	10.00	9.89	LP @ 7209' TVD; 90°
7,800.0	90.00	269.80	7,290.0	942.6	90.9	139.2	0.00	0.00	
7,900.0	90.00	269.80	7,290.0	942.2	-9.1	236.2	0.00	0.00	
8,000.0	90.00	269.80	7,290.0	941.9	-109.1	333.1	0.00	0.00	
8,100.0	90.00	269.80	7,290.0	941.5	-209.1	430.1	0.00	0.00	
8,200.0	90.00	269.80	7,290.0	941.2	-309.1	527.1	0.00	0.00	
8,300.0	90.00	269.80	7,290.0	940.8	-409.1	624.0	0.00	0.00	
8,400.0	90.00	269.80	7,290.0	940.5	-509.1	721.0	0.00	0.00	
8,500.0	90.00	269.80	7,290.0	940.1	-609.1	818.0	0.00	0.00	
8,600.0	90.00	269.80	7,290.0	939.8	-709.1	914.9	0.00	0.00	
8,700.0	90.00	269.80	7,290.0	939.4	-809.1	1,011.9	0.00	0.00	
8,800.0	90.00	269.80	7,290.0	939.1	-909.1	1,108.8	0.00	0.00	
8,900.0	90.00	269.80	7,290.0	938.7	-1,009.1	1,205.8	0.00	0.00	
9,000.0	90.00	269.80	7,290.0	938.4	-1,109.1	1,302.8	0.00	0.00	
9,100.0	90.00	269.80	7,290.0	938.0	-1,209.1	1,399.7	0.00	0.00	
9,200.0	90.00	269.80	7,290.0	937.7	-1,309.1	1,496.7	0.00	0.00	

Planning Report

Database:	USA EDM 5000 Multi Users DB	Local Co-ordinate Reference:	Well McConahay 1E-34H-H266
Company:	EnCana Oil & Gas (USA) Inc	TVD Reference:	WELL @ 5074.0ft (Original Well Elev)
Project:	DJ Wattenberg	MD Reference:	WELL @ 5074.0ft (Original Well Elev)
Site:	S34-T2N-R66W (McConahay)	North Reference:	True
Well:	McConahay 1E-34H-H266	Survey Calculation Method:	Minimum Curvature
Wellbore:	Hz		
Design:	Plan #1		

Planned Survey

Measured Depth (ft)	Inclination (°)	Azimuth (°)	Vertical Depth (ft)	+N/-S (ft)	+E/-W (ft)	Vertical Section (ft)	Dogleg Rate (°/100ft)	Build Rate (°/100ft)	Comments / Formations
9,300.0	90.00	269.80	7,290.0	937.3	-1,409.1	1,593.6	0.00	0.00	
9,400.0	90.00	269.80	7,290.0	937.0	-1,509.1	1,690.6	0.00	0.00	
9,500.0	90.00	269.80	7,290.0	936.6	-1,609.1	1,787.6	0.00	0.00	
9,600.0	90.00	269.80	7,290.0	936.3	-1,709.1	1,884.5	0.00	0.00	
9,700.0	90.00	269.80	7,290.0	935.9	-1,809.1	1,981.5	0.00	0.00	
9,800.0	90.00	269.80	7,290.0	935.6	-1,909.1	2,078.4	0.00	0.00	
9,900.0	90.00	269.80	7,290.0	935.2	-2,009.1	2,175.4	0.00	0.00	
10,000.0	90.00	269.80	7,290.0	934.9	-2,109.1	2,272.4	0.00	0.00	
10,100.0	90.00	269.80	7,290.0	934.5	-2,209.1	2,369.3	0.00	0.00	
10,200.0	90.00	269.80	7,290.0	934.2	-2,309.1	2,466.3	0.00	0.00	
10,300.0	90.00	269.80	7,290.0	933.8	-2,409.1	2,563.2	0.00	0.00	
10,400.0	90.00	269.80	7,290.0	933.5	-2,509.1	2,660.2	0.00	0.00	
10,500.0	90.00	269.80	7,290.0	933.1	-2,609.1	2,757.2	0.00	0.00	
10,600.0	90.00	269.80	7,290.0	932.8	-2,709.1	2,854.1	0.00	0.00	
10,700.0	90.00	269.80	7,290.0	932.4	-2,809.1	2,951.1	0.00	0.00	
10,800.0	90.00	269.80	7,290.0	932.1	-2,909.1	3,048.0	0.00	0.00	
10,900.0	90.00	269.80	7,290.0	931.7	-3,009.1	3,145.0	0.00	0.00	
11,000.0	90.00	269.80	7,290.0	931.4	-3,109.1	3,242.0	0.00	0.00	
11,100.0	90.00	269.80	7,290.0	931.0	-3,209.1	3,338.9	0.00	0.00	
11,200.0	90.00	269.80	7,290.0	930.7	-3,309.1	3,435.9	0.00	0.00	
11,300.0	90.00	269.80	7,290.0	930.3	-3,409.1	3,532.9	0.00	0.00	
11,400.0	90.00	269.80	7,290.0	930.0	-3,509.1	3,629.8	0.00	0.00	
11,500.0	90.00	269.80	7,290.0	929.6	-3,609.1	3,726.8	0.00	0.00	
11,600.0	90.00	269.80	7,290.0	929.3	-3,709.1	3,823.7	0.00	0.00	
11,628.2	90.00	269.80	7,290.0	929.2	-3,737.3	3,851.1	0.00	0.00	TD at 11628.2 - McConahay 1E-34H-H266 PBI-

Targets

Target Name	Dip Angle (°)	Dip Dir. (°)	TVD (ft)	+N/-S (ft)	+E/-W (ft)	Northing (ft)	Easting (ft)	Latitude	Longitude
- hit/miss target									
- Shape									
McConahay 1E-34H-H266	0.00	0.00	7,290.0	929.2	-3,737.3	1,280,333.59	3,203,909.63	40.100600	-104.771090
- plan hits target center									
- Point									

Formations

Measured Depth (ft)	Vertical Depth (ft)	Name	Lithology	Dip (°)	Dip Direction (°)
990.7	989.0	Fox Hills - BASE	Vanguard		
4,667.2	4,601.0	Sussex			
4,981.9	4,910.0	Sussex Marker			
5,352.7	5,274.0	Shannon			
6,499.5	6,400.0	Teepee Buttes (*if present)			
7,323.0	7,154.0	Sharon Springs			
7,391.7	7,195.0	Niobrara			
7,615.2	7,279.0	B Chalk			

Planning Report

Database:	USA EDM 5000 Multi Users DB	Local Co-ordinate Reference:	Well McConahay 1E-34H-H266
Company:	EnCana Oil & Gas (USA) Inc	TVD Reference:	WELL @ 5074.0ft (Original Well Elev)
Project:	DJ Wattenberg	MD Reference:	WELL @ 5074.0ft (Original Well Elev)
Site:	S34-T2N-R66W (McConahay)	North Reference:	True
Well:	McConahay 1E-34H-H266	Survey Calculation Method:	Minimum Curvature
Wellbore:	Hz		
Design:	Plan #1		

Plan Annotations

Measured Depth (ft)	Vertical Depth (ft)	Local Coordinates		Comment
		+N/-S (ft)	+E/-W (ft)	
300.0	300.0	0.0	0.0	KOP @ 300'
1,394.8	1,388.1	79.1	67.9	EOB; Inc=10.95°
6,756.9	6,652.6	851.6	731.5	Start build/turn @ 6756' MD
7,728.2	7,290.0	942.8	162.6	LP @ 7209' TVD; 90°
11,628.2	7,290.0	929.2	-3,737.3	TD at 11628.2

EnCana Oil & Gas (USA) Inc

DJ Wattenberg

S34-T2N-R66W (McConahay)

McConahay 1E-34H-H266

Hz

Plan #1

Anticollision Report

16 December, 2013

Anticollision Report

Company:	EnCana Oil & Gas (USA) Inc	Local Co-ordinate Reference:	Well McConahay 1E-34H-H266
Project:	DJ Wattenberg	TVD Reference:	WELL @ 5074.0ft (Original Well Elev)
Reference Site:	S34-T2N-R66W (McConahay)	MD Reference:	WELL @ 5074.0ft (Original Well Elev)
Site Error:	0.0ft	North Reference:	True
Reference Well:	McConahay 1E-34H-H266	Survey Calculation Method:	Minimum Curvature
Well Error:	0.0ft	Output errors are at	2.00 sigma
Reference Wellbore	Hz	Database:	USA EDM 5000 Multi Users DB
Reference Design:	Plan #1	Offset TVD Reference:	Offset Datum

Reference	Plan #1		
Filter type:	NO GLOBAL FILTER: Using user defined selection & filtering criteria		
Interpolation Method:	MD Interval 100.0ft	Error Model:	Systematic Ellipse
Depth Range:	Unlimited	Scan Method:	Closest Approach 3D
Results Limited by:	Maximum center-center distance of 500.0ft	Error Surface:	Elliptical Conic
Warning Levels Evaluated at:	2.00 Sigma		

Survey Tool Program		Date	12/16/2013		
From (ft)	To (ft)	Survey (Wellbore)	Tool Name	Description	
0.0	11,628.2	Plan #1 (Hz)	Geolink MWD	Geolink MWD	

Summary						
Site Name	Reference Measured Depth (ft)	Offset Measured Depth (ft)	Distance Between Centres (ft)	Distance Between Ellipses (ft)	Separation Factor	Warning
Offset Well - Wellbore - Design						
S34-T2N-R66W (McConahay)						
CONNER 11-34 (EXISTING) - MACEY & MERSHON WE						Out of range
CONNER 21-34 (EXISTING) - FOUNDATION WELL - NO						Out of range
CONNER 22-34 (EXISTING) - ENCANA WELL - GYRO						Out of range
CONNER 23-34 (EXISTING) - ENCANA WELL - NO SUR						Out of range
CONNER 24-34 (EXISTING) - FOUNDATION WELL - NO						Out of range
CONNER D&H 2 (EXISTING) - MARINER WELL - NO S						Out of range
DARLENNE 1 (EXISTING) - ENCANA WELL - NO SURV						Out of range
ERICA 1 (EXISTING) - GREAT WESTERN WELL - NO S						Out of range
MCCONAHAY 1 (EXISTING) - ENCANA WELL - GYRO						Out of range
McConahay 1A-34H - Hz - Hz	5,704.3	5,594.5	271.8	246.9	10.927	CC
McConahay 1A-34H - Hz - Hz	7,000.0	7,052.1	277.8	243.5	8.101	ES, SF
McConahay 1B-34H-H266 - Hz - Plan #3	1,249.4	1,262.5	2.6	-2.6	0.501	Level 1, CC, ES, SF
McConahay 1C-34H-H266 - Hz - Plan #1	261.7	274.7	21.9	21.0	25.127	CC
McConahay 1C-34H-H266 - Hz - Plan #1	300.0	313.0	21.9	20.9	21.782	ES
McConahay 1C-34H-H266 - Hz - Plan #1	600.0	612.4	30.2	28.2	14.578	SF
McConahay 1D-34H-H266 - Hz - Plan #1	161.2	175.2	32.8	32.3	62.933	CC
McConahay 1D-34H-H266 - Hz - Plan #1	200.0	213.9	32.8	32.1	49.982	ES
McConahay 1D-34H-H266 - Hz - Plan #1	600.0	611.3	50.2	48.2	24.242	SF
MCCONAHAY 31-34 (EXISTING) - ENCANA WELL - GY	8,760.1	7,296.7	290.6	251.3	7.400	CC, ES
MCCONAHAY 31-34 (EXISTING) - ENCANA WELL - GY	8,800.0	7,296.4	293.3	253.2	7.305	SF
MCCONAHAY 31-34 (EXISTING) MRP - MACHII-ROSS						Out of range
MCCONAHAY 33-34 (EXISTING) - FOUNDATION WELL						Out of range
MCCONAHAY 41-34 (EXISTING) - ENCANA WELL - GY	7,413.7	7,206.7	113.9	93.3	5.522	CC, ES, SF
MCCONAHAY 43-34 (EXISTING) - ENCANA WELL - NO						Out of range
MCCONAHAY 44-34 (EXISTING) - ENCANA WELL - NO						Out of range
McConahay 4A-34H-P266 - Hz - Plan #2						Out of range
McConahay 4B-34H-P266 - Hz - Plan #3						Out of range
McConahay 4C-34H-P266 - Hz - Plan #2						Out of range
MCCONAHAY 6-4-34 (EXISTING) - ENCANA WELL - SU						Out of range
RANCHERO 1 (EXISTING) - ENCANA WELL - NO SUR						Out of range
RANCHERO 12-34 (EXISTING) - MACHII-ROSS WELL						Out of range
RANCHERO 32-34 (EXISTING) - ENCANA WELL - GYR						Out of range
SEYMOUR 34-34 (EXISTING) - ENCANA WELL - NO SU						Out of range

CC - Min centre to center distance or convergent point, SF - min separation factor, ES - min ellipse separation

Anticollision Report

Company:	EnCana Oil & Gas (USA) Inc	Local Co-ordinate Reference:	Well McConahay 1E-34H-H266
Project:	DJ Wattenberg	TVD Reference:	WELL @ 5074.0ft (Original Well Elev)
Reference Site:	S34-T2N-R66W (McConahay)	MD Reference:	WELL @ 5074.0ft (Original Well Elev)
Site Error:	0.0ft	North Reference:	True
Reference Well:	McConahay 1E-34H-H266	Survey Calculation Method:	Minimum Curvature
Well Error:	0.0ft	Output errors are at	2.00 sigma
Reference Wellbore	Hz	Database:	USA EDM 5000 Multi Users DB
Reference Design:	Plan #1	Offset TVD Reference:	Offset Datum

Offset Design S34-T2N-R66W (McConahay) - McConahay 1A-34H - Hz - Hz													Offset Site Error:	0.0 ft
Survey Program: 785-MWD													Offset Well Error:	0.0 ft
Reference		Offset		Semi Major Axis			Distance						Warning	
Measured Depth (ft)	Vertical Depth (ft)	Measured Depth (ft)	Vertical Depth (ft)	Reference (ft)	Offset (ft)	Highside Toolface (°)	Offset Wellbore Centre +N/-S (ft)	+E/-W (ft)	Between Centres (ft)	Between Ellipses (ft)	Total Uncertainty Axis	Separation Factor		
4,100.0	4,044.1	4,051.8	4,051.2	13.1	7.1	21.28	699.7	830.0	485.7	470.5	15.19	31.973		
4,200.0	4,142.3	4,147.5	4,146.8	13.5	7.2	21.99	700.8	830.2	468.7	453.1	15.63	29.981		
4,300.0	4,240.5	4,241.3	4,240.7	13.9	7.4	22.87	701.4	831.8	452.9	436.8	16.10	28.135		
4,400.0	4,338.7	4,339.1	4,338.4	14.3	7.6	23.85	702.3	833.9	437.7	421.1	16.58	26.396		
4,500.0	4,436.8	4,439.8	4,439.1	14.6	7.8	24.85	703.7	835.6	422.5	405.4	17.09	24.728		
4,600.0	4,535.0	4,538.7	4,538.0	15.0	7.9	25.86	705.0	836.7	406.8	389.2	17.60	23.119		
4,700.0	4,633.2	4,637.7	4,637.0	15.4	8.1	27.00	706.3	838.2	391.6	373.5	18.13	21.603		
4,800.0	4,731.4	4,739.5	4,738.7	15.8	8.3	28.33	706.9	839.2	375.8	357.1	18.70	20.096		
4,900.0	4,829.6	4,838.1	4,837.3	16.1	8.4	29.78	706.9	839.8	359.7	340.4	19.30	18.642		
5,000.0	4,927.7	4,936.1	4,935.3	16.5	8.6	31.32	707.3	840.3	343.9	324.0	19.91	17.273		
5,100.0	5,025.9	5,034.1	5,033.3	16.9	8.8	32.95	707.9	840.9	328.5	307.9	20.56	15.980		
5,200.0	5,124.1	5,131.9	5,131.1	17.3	9.0	34.75	708.5	841.6	313.5	292.3	21.24	14.762		
5,300.0	5,222.3	5,229.6	5,228.8	17.6	9.1	36.67	709.4	842.4	299.0	277.1	21.95	13.624		
5,400.0	5,320.5	5,319.0	5,318.2	18.0	9.3	38.48	711.0	844.3	286.3	263.6	22.65	12.642		
5,500.0	5,418.6	5,405.5	5,404.4	18.4	9.5	40.15	714.3	849.7	278.3	254.9	23.33	11.928		
5,600.0	5,516.8	5,498.7	5,497.2	18.8	9.6	42.02	718.2	858.3	273.7	249.6	24.06	11.372		
5,700.0	5,615.0	5,590.6	5,588.4	19.1	9.8	44.10	721.5	869.1	271.8	247.0	24.84	10.941		
5,704.3	5,619.2	5,594.5	5,592.2	19.2	9.8	44.19	721.6	869.6	271.8	246.9	24.87	10.927 CC		
5,800.0	5,713.2	5,682.1	5,678.7	19.5	10.0	46.02	725.7	882.6	273.4	247.8	25.60	10.680		
5,900.0	5,811.4	5,777.6	5,772.8	19.9	10.2	48.04	729.9	898.8	277.6	251.2	26.39	10.518		
6,000.0	5,909.5	5,867.3	5,860.8	20.3	10.4	49.92	733.6	915.6	284.1	256.9	27.16	10.458		
6,100.0	6,007.7	5,959.7	5,950.7	20.6	10.6	51.77	737.2	936.4	294.6	266.7	27.93	10.547		
6,200.0	6,105.9	6,060.3	6,048.7	21.0	10.9	54.01	739.3	959.0	305.7	276.9	28.79	10.618		
6,300.0	6,204.1	6,160.4	6,146.2	21.4	11.1	55.59	744.0	981.5	316.7	287.2	29.55	10.719		
6,400.0	6,302.3	6,257.2	6,240.3	21.8	11.4	56.83	749.6	1,003.4	328.1	297.8	30.26	10.842		
6,500.0	6,400.4	6,359.3	6,339.5	22.2	11.7	57.95	756.1	1,026.5	339.4	308.5	30.97	10.960		
6,600.0	6,498.6	6,492.7	6,470.4	22.5	12.1	59.76	762.9	1,051.4	347.8	316.0	31.85	10.921		
6,700.0	6,596.8	6,669.4	6,646.6	22.9	12.3	64.90	762.6	1,049.2	337.0	303.8	33.22	10.145		
6,800.0	6,695.1	6,811.9	6,784.4	23.2	12.3	94.65	749.7	1,016.8	311.9	277.3	34.59	9.018		
6,900.0	6,793.9	6,954.1	6,912.4	23.4	12.3	164.21	729.9	958.6	289.3	254.2	35.04	8.256		
7,000.0	6,890.5	7,052.1	6,992.4	23.4	12.4	-164.01	711.4	905.4	277.8	243.5	34.29	8.101 ES, SF		
7,009.6	6,899.6	7,060.9	6,999.5	23.4	12.4	-162.00	709.4	900.4	277.7	243.5	34.17	8.127		
7,100.0	6,982.0	7,166.3	7,078.3	23.3	12.6	-144.59	685.2	835.0	282.4	249.5	32.91	8.582		
7,200.0	7,065.6	7,275.7	7,147.4	23.0	13.0	-129.69	658.7	754.5	295.6	264.2	31.42	9.406		
7,300.0	7,138.9	7,372.4	7,199.9	22.7	13.7	-118.47	633.4	677.4	318.8	288.5	30.33	10.513		
7,400.0	7,199.5	7,460.9	7,242.3	22.3	14.5	-110.08	608.7	603.8	349.0	319.2	29.84	11.694		
7,500.0	7,245.6	7,549.4	7,277.5	22.0	15.6	-103.39	580.7	527.7	384.5	354.4	30.13	12.760		
7,600.0	7,275.9	7,638.6	7,303.3	21.7	16.9	-97.99	550.1	448.0	422.2	391.0	31.21	13.529		
7,700.0	7,289.3	7,754.4	7,324.3	21.5	18.8	-94.28	510.4	341.3	458.5	425.1	33.40	13.727		
7,800.0	7,290.0	7,862.4	7,329.5	21.5	20.9	-93.62	477.0	238.9	489.5	453.4	36.03	13.585		

CC - Min centre to center distance or convergent point, SF - min separation factor, ES - min ellipse separation

Anticollision Report

Company:	EnCana Oil & Gas (USA) Inc	Local Co-ordinate Reference:	Well McConahay 1E-34H-H266
Project:	DJ Wattenberg	TVD Reference:	WELL @ 5074.0ft (Original Well Elev)
Reference Site:	S34-T2N-R66W (McConahay)	MD Reference:	WELL @ 5074.0ft (Original Well Elev)
Site Error:	0.0ft	North Reference:	True
Reference Well:	McConahay 1E-34H-H266	Survey Calculation Method:	Minimum Curvature
Well Error:	0.0ft	Output errors are at	2.00 sigma
Reference Wellbore	Hz	Database:	USA EDM 5000 Multi Users DB
Reference Design:	Plan #1	Offset TVD Reference:	Offset Datum

Offset Design S34-T2N-R66W (McConahay) - McConahay 1B-34H-H266 - Hz - Plan #3													Offset Site Error:	0.0 ft
Survey Program: 0-Geolink MWD													Offset Well Error:	0.0 ft
Reference		Offset		Semi Major Axis		Highside Toolface (°)	Distance		Total Uncertainty Axis	Separation Factor	Warning			
Measured Depth (ft)	Vertical Depth (ft)	Measured Depth (ft)	Vertical Depth (ft)	Reference (ft)	Offset (ft)		Offset Wellbore Centre +N/-S (ft)	+E/-W (ft)						
0.0	0.0	13.0	13.0	0.0	0.0	-180.00	-10.9	0.0	10.9					
100.0	100.0	113.0	113.0	0.2	0.2	-180.00	-10.9	0.0	10.9	10.6	0.31	35.780		
200.0	200.0	213.0	213.0	0.3	0.3	179.96	-10.9	0.0	10.9	10.3	0.65	16.676		
300.0	300.0	313.2	313.2	0.5	0.5	176.39	-10.0	0.6	10.0	9.0	1.01	9.974		
400.0	400.0	413.3	413.2	0.7	0.7	127.97	-7.7	2.2	8.5	7.1	1.36	6.250		
500.0	500.0	513.3	513.2	0.9	0.9	117.87	-3.9	4.8	7.0	5.3	1.72	4.065		
600.0	599.9	613.4	613.0	1.0	1.1	103.62	1.4	8.4	5.7	3.5	2.11	2.679		
700.0	699.7	713.4	712.7	1.2	1.3	82.63	8.0	13.0	4.7	2.1	2.53	1.839		
783.9	783.3	797.2	796.1	1.4	1.5	59.39	14.7	17.6	4.3	1.5	2.86	1.515		
800.0	799.4	813.3	812.1	1.4	1.5	54.65	16.1	18.5	4.3	1.4	2.92	1.491 Level 3		
900.0	898.9	913.2	911.4	1.7	1.8	27.36	25.7	25.1	5.0	1.8	3.20	1.557		
1,000.0	998.3	1,013.2	1,010.6	1.9	2.0	9.42	36.0	32.1	5.6	2.2	3.47	1.625		
1,100.0	1,097.4	1,113.2	1,109.8	2.2	2.3	-5.08	46.3	39.2	5.0	1.2	3.79	1.317 Level 3		
1,200.0	1,196.3	1,213.2	1,209.0	2.5	2.6	-34.49	56.7	46.3	3.2	-1.2	4.40	0.725 Level 1		
1,249.4	1,245.1	1,262.5	1,257.9	2.6	2.7	-71.46	61.8	49.8	2.6	-2.6	5.22	0.501 Level 1, CC, ES, SF		
1,300.0	1,294.9	1,313.1	1,308.1	2.8	2.9	-114.56	67.0	53.4	3.5	-2.0	5.51	0.633 Level 1		
1,400.0	1,393.3	1,412.9	1,407.1	3.1	3.1	-148.00	77.3	60.4	8.6	3.2	5.34	1.605		
1,500.0	1,491.4	1,512.7	1,506.1	3.5	3.4	-156.93	87.6	67.5	15.1	9.5	5.55	2.720		
1,600.0	1,589.6	1,612.4	1,605.1	3.9	3.7	-160.45	98.0	74.6	21.7	15.9	5.86	3.711		
1,700.0	1,687.8	1,712.2	1,704.1	4.2	4.0	-162.31	108.3	81.6	28.4	22.2	6.20	4.586		
1,800.0	1,786.0	1,812.0	1,803.0	4.6	4.2	-163.46	118.6	88.7	35.2	28.6	6.56	5.363		
1,900.0	1,884.2	1,911.7	1,902.0	4.9	4.5	-164.24	128.9	95.8	41.9	35.0	6.92	6.056		
2,000.0	1,982.3	2,011.5	2,001.0	5.3	4.8	-164.81	139.2	102.8	48.6	41.3	7.28	6.677		
2,100.0	2,080.5	2,111.3	2,100.0	5.7	5.1	-165.23	149.6	109.9	55.4	47.7	7.65	7.237		
2,200.0	2,178.7	2,211.1	2,199.0	6.0	5.3	-165.57	159.9	117.0	62.1	54.1	8.02	7.745		
2,300.0	2,276.9	2,310.8	2,298.0	6.4	5.6	-165.84	170.2	124.0	68.8	60.5	8.39	8.208		
2,400.0	2,375.1	2,410.6	2,397.0	6.8	5.9	-166.06	180.5	131.1	75.6	66.8	8.76	8.630		
2,500.0	2,473.2	2,510.4	2,495.9	7.2	6.2	-166.25	190.8	138.2	82.3	73.2	9.13	9.018		
2,600.0	2,571.4	2,610.1	2,594.9	7.5	6.4	-166.40	201.1	145.2	89.1	79.6	9.50	9.376		
2,700.0	2,669.6	2,709.9	2,693.9	7.9	6.7	-166.54	211.5	152.3	95.8	85.9	9.87	9.706		
2,800.0	2,767.8	2,809.7	2,792.9	8.3	7.0	-166.66	221.8	159.4	102.6	92.3	10.24	10.011		
2,900.0	2,866.0	2,909.5	2,891.9	8.6	7.3	-166.76	232.1	166.4	109.3	98.7	10.62	10.296		
3,000.0	2,964.1	3,009.2	2,990.9	9.0	7.6	-166.85	242.4	173.5	116.0	105.1	10.99	10.560		
3,100.0	3,062.3	3,109.0	3,089.8	9.4	7.8	-166.93	252.7	180.6	122.8	111.4	11.36	10.807		
3,200.0	3,160.5	3,208.8	3,188.8	9.8	8.1	-167.00	263.1	187.6	129.5	117.8	11.73	11.039		
3,300.0	3,258.7	3,308.6	3,287.8	10.1	8.4	-167.07	273.4	194.7	136.3	124.2	12.11	11.256		
3,400.0	3,356.9	3,408.3	3,386.8	10.5	8.7	-167.13	283.7	201.8	143.0	130.5	12.48	11.460		
3,500.0	3,455.0	3,508.1	3,485.8	10.9	9.0	-167.18	294.0	208.8	149.8	136.9	12.85	11.652		
3,600.0	3,553.2	3,607.9	3,584.8	11.3	9.2	-167.23	304.3	215.9	156.5	143.3	13.23	11.833		
3,700.0	3,651.4	3,707.6	3,683.8	11.6	9.5	-167.27	314.6	223.0	163.3	149.7	13.60	12.004		
3,800.0	3,749.6	3,807.4	3,782.7	12.0	9.8	-167.32	325.0	230.0	170.0	156.0	13.97	12.166		
3,900.0	3,847.8	3,907.2	3,881.7	12.4	10.1	-167.35	335.3	237.1	176.8	162.4	14.35	12.319		
4,000.0	3,945.9	4,007.0	3,980.7	12.8	10.3	-167.39	345.6	244.2	183.5	168.8	14.72	12.465		
4,100.0	4,044.1	4,106.7	4,079.7	13.1	10.6	-167.42	355.9	251.2	190.3	175.2	15.10	12.603		
4,200.0	4,142.3	4,206.5	4,178.7	13.5	10.9	-167.45	366.2	258.3	197.0	181.5	15.47	12.735		
4,300.0	4,240.5	4,306.3	4,277.7	13.9	11.2	-167.48	376.6	265.4	203.7	187.9	15.84	12.860		
4,400.0	4,338.7	4,406.0	4,376.7	14.3	11.5	-167.51	386.9	272.4	210.5	194.3	16.22	12.980		
4,500.0	4,436.8	4,505.8	4,475.6	14.6	11.7	-167.53	397.2	279.5	217.2	200.6	16.59	13.094		
4,600.0	4,535.0	4,605.6	4,574.6	15.0	12.0	-167.56	407.5	286.6	224.0	207.0	16.96	13.203		
4,700.0	4,633.2	4,705.4	4,673.6	15.4	12.3	-167.58	417.8	293.6	230.7	213.4	17.34	13.308		
4,800.0	4,731.4	4,805.1	4,772.6	15.8	12.6	-167.60	428.2	300.7	237.5	219.8	17.71	13.407		
4,900.0	4,829.6	4,904.9	4,871.6	16.1	12.9	-167.62	438.5	307.8	244.2	226.1	18.09	13.503		

CC - Min centre to center distance or convergent point, SF - min separation factor, ES - min ellipse separation

Anticollision Report

Company:	EnCana Oil & Gas (USA) Inc	Local Co-ordinate Reference:	Well McConahay 1E-34H-H266
Project:	DJ Wattenberg	TVD Reference:	WELL @ 5074.0ft (Original Well Elev)
Reference Site:	S34-T2N-R66W (McConahay)	MD Reference:	WELL @ 5074.0ft (Original Well Elev)
Site Error:	0.0ft	North Reference:	True
Reference Well:	McConahay 1E-34H-H266	Survey Calculation Method:	Minimum Curvature
Well Error:	0.0ft	Output errors are at	2.00 sigma
Reference Wellbore	Hz	Database:	USA EDM 5000 Multi Users DB
Reference Design:	Plan #1	Offset TVD Reference:	Offset Datum

Offset Design S34-T2N-R66W (McConahay) - McConahay 1B-34H-H266 - Hz - Plan #3													Offset Site Error:	0.0 ft
Survey Program: 0-Geolink MWD													Offset Well Error:	0.0 ft
Reference		Offset		Semi Major Axis			Distance				Total		Warning	
Measured Depth (ft)	Vertical Depth (ft)	Measured Depth (ft)	Vertical Depth (ft)	Reference (ft)	Offset (ft)	Highside Toolface (°)	Offset Wellbore Centre +N/-S (ft)	+E/-W (ft)	Between Centres (ft)	Between Ellipses (ft)	Uncertainty Axis	Separation Factor		
5,000.0	4,927.7	5,004.7	4,970.6	16.5	13.1	-167.64	448.8	314.8	251.0	232.5	18.46	13.595		
5,100.0	5,025.9	5,104.4	5,069.6	16.9	13.4	-167.66	459.1	321.9	257.7	238.9	18.83	13.683		
5,200.0	5,124.1	5,204.2	5,168.5	17.3	13.7	-167.67	469.4	329.0	264.5	245.3	19.21	13.768		
5,300.0	5,222.3	5,304.0	5,267.5	17.6	14.0	-167.69	479.7	336.0	271.2	251.6	19.58	13.850		
5,400.0	5,320.5	5,403.8	5,366.5	18.0	14.3	-167.71	490.1	343.1	278.0	258.0	19.96	13.928		
5,500.0	5,418.6	5,503.5	5,465.5	18.4	14.5	-167.72	500.4	350.2	284.7	264.4	20.33	14.004		
5,600.0	5,516.8	5,603.3	5,564.5	18.8	14.8	-167.73	510.7	357.2	291.5	270.7	20.70	14.077		
5,700.0	5,615.0	5,703.1	5,663.5	19.1	15.1	-167.75	521.0	364.3	298.2	277.1	21.08	14.147		
5,800.0	5,713.2	5,802.9	5,762.4	19.5	15.4	-167.76	531.3	371.4	304.9	283.5	21.45	14.215		
5,900.0	5,811.4	5,902.6	5,861.4	19.9	15.7	-167.77	541.7	378.4	311.7	289.9	21.83	14.280		
6,000.0	5,909.5	6,002.4	5,960.4	20.3	15.9	-167.78	552.0	385.5	318.4	296.2	22.20	14.343		
6,100.0	6,007.7	6,102.2	6,059.4	20.6	16.2	-167.79	562.3	392.6	325.2	302.6	22.58	14.404		
6,200.0	6,105.9	6,201.9	6,158.4	21.0	16.5	-167.81	572.6	399.6	331.9	309.0	22.95	14.464		
6,300.0	6,204.1	6,301.7	6,257.4	21.4	16.8	-167.82	582.9	406.7	338.7	315.4	23.32	14.521		
6,400.0	6,302.3	6,401.5	6,356.4	21.8	17.1	-167.83	593.2	413.8	345.4	321.7	23.70	14.576		
6,500.0	6,400.4	6,501.3	6,455.3	22.2	17.3	-167.83	603.6	420.8	352.2	328.1	24.07	14.630		
6,600.0	6,498.6	6,601.0	6,554.3	22.5	17.6	-167.84	613.9	427.9	358.9	334.5	24.45	14.682		
6,700.0	6,596.8	6,700.8	6,653.3	22.9	17.9	-167.85	624.2	435.0	365.7	340.9	24.82	14.732		
6,800.0	6,695.1	6,800.6	6,752.3	23.2	18.2	-146.19	634.5	442.0	371.1	345.9	25.20	14.727		
6,900.0	6,793.9	6,899.8	6,850.8	23.4	18.4	-89.00	644.8	449.1	365.2	340.2	24.97	14.621		
7,000.0	6,890.5	6,981.3	6,931.7	23.4	18.7	-69.78	653.1	454.2	347.5	323.2	24.28	14.309		
7,100.0	6,982.0	7,050.0	7,000.0	23.3	18.8	-66.21	659.1	451.6	326.6	302.7	23.83	13.706		
7,200.0	7,065.6	7,109.2	7,058.4	23.0	18.8	-67.77	663.2	442.9	305.3	281.3	24.02	12.711		
7,300.0	7,138.9	7,175.2	7,122.1	22.7	18.7	-72.75	666.5	426.2	286.5	261.3	25.11	11.409		
7,400.0	7,199.5	7,243.2	7,185.4	22.3	18.7	-79.71	668.6	401.6	273.0	246.3	26.69	10.229		
7,490.5	7,241.9	7,307.1	7,241.9	22.0	18.5	-86.98	669.2	371.9	268.5	240.6	27.96	9.604		
7,500.0	7,245.6	7,314.0	7,247.8	22.0	18.5	-87.77	669.2	368.3	268.6	240.5	28.05	9.576		
7,600.0	7,275.9	7,388.6	7,308.7	21.7	18.3	-96.07	668.2	325.3	276.0	247.3	28.68	9.621		
7,700.0	7,289.3	7,468.8	7,367.4	21.5	18.1	-103.97	665.2	270.8	296.1	267.4	28.70	10.316		
7,800.0	7,290.0	7,560.6	7,424.6	21.5	17.9	-113.21	659.5	199.3	326.6	298.1	28.52	11.453		
7,900.0	7,290.0	7,675.8	7,479.0	21.8	17.7	-120.94	648.9	98.5	358.6	330.0	28.62	12.530		
8,000.0	7,290.0	7,812.8	7,516.1	22.3	17.7	-124.50	632.1	-31.9	383.8	354.0	29.84	12.863		
8,100.0	7,290.0	7,940.8	7,523.0	23.3	18.1	-123.81	613.2	-158.1	398.5	366.1	32.43	12.289		
8,200.0	7,290.0	8,039.7	7,523.0	24.6	19.0	-122.65	598.0	-255.8	411.1	375.8	35.27	11.657		
8,300.0	7,290.0	8,138.5	7,523.0	26.2	20.4	-121.56	582.8	-353.5	423.9	385.4	38.43	11.030		
8,400.0	7,290.0	8,237.4	7,523.0	27.9	22.0	-120.53	567.7	-451.2	436.7	394.9	41.86	10.434		
8,500.0	7,290.0	8,336.3	7,523.0	29.8	23.7	-119.56	552.5	-548.9	449.8	404.2	45.51	9.882		
8,600.0	7,290.0	8,435.1	7,523.0	31.7	25.6	-118.65	537.3	-646.6	462.9	413.5	49.35	9.380		
8,700.0	7,290.0	8,534.0	7,523.0	33.8	27.6	-117.79	522.2	-744.3	476.1	422.8	53.34	8.927		
8,800.0	7,290.0	8,632.9	7,523.0	35.9	29.6	-116.97	507.0	-842.0	489.5	432.0	57.45	8.520		

Anticollision Report

Company:	EnCana Oil & Gas (USA) Inc	Local Co-ordinate Reference:	Well McConahay 1E-34H-H266
Project:	DJ Wattenberg	TVD Reference:	WELL @ 5074.0ft (Original Well Elev)
Reference Site:	S34-T2N-R66W (McConahay)	MD Reference:	WELL @ 5074.0ft (Original Well Elev)
Site Error:	0.0ft	North Reference:	True
Reference Well:	McConahay 1E-34H-H266	Survey Calculation Method:	Minimum Curvature
Well Error:	0.0ft	Output errors are at	2.00 sigma
Reference Wellbore	Hz	Database:	USA EDM 5000 Multi Users DB
Reference Design:	Plan #1	Offset TVD Reference:	Offset Datum

Offset Design S34-T2N-R66W (McConahay) - McConahay 1C-34H-H266 - Hz - Plan #1													Offset Site Error:	0.0 ft
Survey Program: 0-Geolink MWD													Offset Well Error:	0.0 ft
Reference		Offset		Semi Major Axis		Highside Toolface (°)	Distance		Total Uncertainty Axis	Separation Factor	Warning			
Measured Depth (ft)	Vertical Depth (ft)	Measured Depth (ft)	Vertical Depth (ft)	Reference (ft)	Offset (ft)		Offset Wellbore Centre +N/-S (ft)	+E/-W (ft)						
0.0	0.0	13.0	13.0	0.0	0.0	180.00	-21.9	0.0	21.9					
100.0	100.0	113.0	113.0	0.2	0.2	180.00	-21.9	0.0	21.9	21.6	0.31	71.560		
200.0	200.0	213.0	213.0	0.3	0.3	180.00	-21.9	0.0	21.9	21.2	0.65	33.395		
261.7	261.7	274.7	274.7	0.4	0.4	180.00	-21.9	0.0	21.9	21.0	0.87	25.127 CC		
300.0	300.0	313.0	313.0	0.5	0.5	179.96	-21.9	0.0	21.9	20.9	1.00	21.782 ES		
400.0	400.0	412.9	412.9	0.7	0.7	138.07	-22.2	1.1	22.8	21.5	1.35	16.856		
500.0	500.0	512.7	512.7	0.9	0.9	135.87	-22.9	3.8	25.6	23.9	1.71	14.979		
600.0	599.9	612.4	612.3	1.0	1.0	133.38	-24.1	8.2	30.2	28.2	2.07	14.578 SF		
700.0	699.7	712.0	711.6	1.2	1.2	131.08	-25.8	14.3	36.8	34.3	2.45	14.976		
800.0	799.4	811.3	810.6	1.4	1.5	129.16	-27.9	22.0	45.2	42.3	2.85	15.820		
900.0	898.9	910.4	909.2	1.7	1.7	127.64	-30.5	31.3	55.4	52.2	3.28	16.906		
1,000.0	998.3	1,009.2	1,007.4	1.9	1.9	126.45	-33.5	42.3	67.6	63.8	3.73	18.110		
1,100.0	1,097.4	1,107.6	1,104.9	2.2	2.2	125.53	-36.9	54.8	81.5	77.3	4.21	19.350		
1,200.0	1,196.3	1,205.6	1,201.8	2.5	2.5	124.79	-40.8	68.8	97.4	92.6	4.73	20.576		
1,300.0	1,294.9	1,303.1	1,298.0	2.8	2.8	124.20	-45.1	84.4	115.0	109.7	5.28	21.759		
1,400.0	1,393.3	1,401.2	1,394.5	3.1	3.1	123.97	-49.7	101.1	134.1	128.2	5.86	22.861		
1,500.0	1,491.4	1,499.2	1,491.1	3.5	3.5	124.16	-54.3	117.7	153.6	147.1	6.46	23.783		
1,600.0	1,589.6	1,597.3	1,587.6	3.9	3.8	124.31	-58.9	134.3	173.1	166.1	7.06	24.524		
1,700.0	1,687.8	1,695.4	1,684.1	4.2	4.1	124.42	-63.4	151.0	192.6	185.0	7.67	25.130		
1,800.0	1,786.0	1,793.5	1,780.7	4.6	4.5	124.51	-68.0	167.6	212.2	203.9	8.28	25.633		
1,900.0	1,884.2	1,891.5	1,877.2	4.9	4.8	124.59	-72.6	184.2	231.7	222.8	8.89	26.057		
2,000.0	1,982.3	1,989.6	1,973.8	5.3	5.1	124.66	-77.2	200.9	251.2	241.7	9.51	26.417		
2,100.0	2,080.5	2,087.7	2,070.3	5.7	5.5	124.71	-81.8	217.5	270.8	260.6	10.13	26.728		
2,200.0	2,178.7	2,185.8	2,166.9	6.0	5.8	124.76	-86.4	234.1	290.3	279.5	10.75	26.998		
2,300.0	2,276.9	2,283.8	2,263.4	6.4	6.2	124.81	-90.9	250.8	309.8	298.4	11.38	27.235		
2,400.0	2,375.1	2,381.9	2,360.0	6.8	6.5	124.84	-95.5	267.4	329.3	317.3	12.00	27.444		
2,500.0	2,473.2	2,480.0	2,456.5	7.2	6.9	124.88	-100.1	284.0	348.9	336.2	12.63	27.630		
2,600.0	2,571.4	2,578.0	2,553.0	7.5	7.2	124.91	-104.7	300.7	368.4	355.1	13.25	27.796		
2,700.0	2,669.6	2,676.1	2,649.6	7.9	7.6	124.93	-109.3	317.3	387.9	374.0	13.88	27.946		
2,800.0	2,767.8	2,774.2	2,746.1	8.3	7.9	124.96	-113.9	333.9	407.5	392.9	14.51	28.081		
2,900.0	2,866.0	2,872.3	2,842.7	8.6	8.2	124.98	-118.4	350.6	427.0	411.8	15.14	28.204		
3,000.0	2,964.1	2,970.3	2,939.2	9.0	8.6	125.00	-123.0	367.2	446.5	430.7	15.77	28.316		
3,100.0	3,062.3	3,068.4	3,035.8	9.4	8.9	125.02	-127.6	383.9	466.0	449.6	16.40	28.418		
3,200.0	3,160.5	3,166.5	3,132.3	9.8	9.3	125.04	-132.2	400.5	485.6	468.5	17.03	28.512		

Anticollision Report

Company:	EnCana Oil & Gas (USA) Inc	Local Co-ordinate Reference:	Well McConahay 1E-34H-H266
Project:	DJ Wattenberg	TVD Reference:	WELL @ 5074.0ft (Original Well Elev)
Reference Site:	S34-T2N-R66W (McConahay)	MD Reference:	WELL @ 5074.0ft (Original Well Elev)
Site Error:	0.0ft	North Reference:	True
Reference Well:	McConahay 1E-34H-H266	Survey Calculation Method:	Minimum Curvature
Well Error:	0.0ft	Output errors are at	2.00 sigma
Reference Wellbore	Hz	Database:	USA EDM 5000 Multi Users DB
Reference Design:	Plan #1	Offset TVD Reference:	Offset Datum

Offset Design S34-T2N-R66W (McConahay) - McConahay 1D-34H-H266 - Hz - Plan #1													Offset Site Error:	0.0 ft
Survey Program: 0-Geolink MWD													Offset Well Error:	0.0 ft
Reference		Offset		Semi Major Axis		Highside Toolface (°)	Distance		Total Uncertainty Axis	Separation Factor	Warning			
Measured Depth (ft)	Vertical Depth (ft)	Measured Depth (ft)	Vertical Depth (ft)	Reference (ft)	Offset (ft)		Offset Wellbore Centre +N/-S (ft)	+E/-W (ft)						
0.0	0.0	14.0	14.0	0.0	0.0	-180.00	-32.8	0.0	32.8					
100.0	100.0	114.0	114.0	0.2	0.2	-180.00	-32.8	0.0	32.8	32.5	0.31	106.730		
161.2	161.2	175.2	175.2	0.3	0.3	-180.00	-32.8	0.0	32.8	32.3	0.52	62.933 CC		
200.0	200.0	213.9	213.9	0.3	0.3	179.98	-32.8	0.0	32.8	32.1	0.66	49.982 ES		
300.0	300.0	313.5	313.5	0.5	0.5	178.75	-33.6	0.7	33.6	32.6	1.00	33.498		
400.0	400.0	413.0	412.9	0.7	0.7	136.16	-35.8	2.6	36.5	35.2	1.36	26.937		
500.0	500.0	512.3	512.1	0.9	0.9	134.80	-39.2	5.5	42.1	40.3	1.71	24.587		
600.0	599.9	611.3	610.9	1.0	1.1	134.03	-44.0	9.6	50.2	48.2	2.07	24.242 SF		
700.0	699.7	709.9	709.2	1.2	1.3	133.71	-50.0	14.8	61.0	58.6	2.44	24.974		
800.0	799.4	808.1	806.9	1.4	1.5	133.66	-57.2	21.0	74.4	71.6	2.83	26.319		
900.0	898.9	905.6	903.9	1.7	1.8	133.76	-65.7	28.3	90.3	87.1	3.22	28.017		
1,000.0	998.3	1,002.6	999.9	1.9	2.0	133.92	-75.4	36.5	108.8	105.2	3.64	29.909		
1,100.0	1,097.4	1,098.7	1,095.0	2.2	2.3	134.11	-86.2	45.8	129.8	125.8	4.07	31.892		
1,200.0	1,196.3	1,194.0	1,189.0	2.5	2.6	134.28	-98.0	56.0	153.4	148.9	4.52	33.898		
1,300.0	1,294.9	1,288.3	1,281.8	2.8	3.0	134.44	-111.0	67.1	179.4	174.4	5.00	35.884		
1,400.0	1,393.3	1,381.7	1,373.3	3.1	3.3	134.59	-124.9	79.1	207.8	202.3	5.50	37.823		
1,500.0	1,491.4	1,474.1	1,463.7	3.5	3.7	134.75	-139.8	91.9	238.1	232.0	6.01	39.607		
1,600.0	1,589.6	1,565.8	1,552.9	3.9	4.1	134.68	-155.7	105.5	269.5	263.0	6.54	41.221		
1,700.0	1,687.8	1,656.7	1,641.1	4.2	4.5	134.45	-172.6	120.0	302.1	295.1	7.08	42.701		
1,800.0	1,786.0	1,746.8	1,728.1	4.6	4.9	134.10	-190.3	135.2	336.0	328.3	7.62	44.073		
1,900.0	1,884.2	1,837.7	1,815.5	4.9	5.4	133.69	-209.1	151.3	370.9	362.7	8.18	45.345		
2,000.0	1,982.3	1,931.3	1,905.4	5.3	5.8	133.31	-228.7	168.2	406.1	397.4	8.75	46.425		
2,100.0	2,080.5	2,024.8	1,995.4	5.7	6.3	132.99	-248.3	185.0	441.3	432.0	9.32	47.361		
2,200.0	2,178.7	2,118.4	2,085.3	6.0	6.8	132.72	-268.0	201.8	476.6	466.7	9.89	48.180		

Anticollision Report

Company:	EnCana Oil & Gas (USA) Inc	Local Co-ordinate Reference:	Well McConahay 1E-34H-H266
Project:	DJ Wattenberg	TVD Reference:	WELL @ 5074.0ft (Original Well Elev)
Reference Site:	S34-T2N-R66W (McConahay)	MD Reference:	WELL @ 5074.0ft (Original Well Elev)
Site Error:	0.0ft	North Reference:	True
Reference Well:	McConahay 1E-34H-H266	Survey Calculation Method:	Minimum Curvature
Well Error:	0.0ft	Output errors are at	2.00 sigma
Reference Wellbore	Hz	Database:	USA EDM 5000 Multi Users DB
Reference Design:	Plan #1	Offset TVD Reference:	Offset Datum

Offset Design S34-T2N-R66W (McConahay) - MCCONAHAY 31-34 (EXISTING) - ENCANA WELL - GYROS												Offset Site Error:	0.0 ft
Survey Program: 100-Gyro												Offset Well Error:	0.0 ft
Reference		Offset		Semi Major Axis		Distance							
Measured Depth (ft)	Vertical Depth (ft)	Measured Depth (ft)	Vertical Depth (ft)	Reference (ft)	Offset (ft)	Highside Toolface (°)	Offset Wellbore Centre +N/-S (ft)	+E/-W (ft)	Between Centres (ft)	Between Ellipses (ft)	Total Uncertainty Axis	Separation Factor	Warning
8,400.0	7,290.0	7,299.8	7,297.4	27.9	6.4	-89.69	648.6	-868.1	462.7	431.1	31.62	14.631	
8,500.0	7,290.0	7,299.0	7,296.6	29.8	6.4	-89.52	648.6	-868.1	390.0	356.3	33.67	11.581	
8,600.0	7,290.0	7,298.1	7,295.7	31.7	6.4	-89.35	648.6	-868.1	331.8	296.0	35.78	9.271	
8,700.0	7,290.0	7,297.2	7,294.9	33.8	6.4	-89.18	648.6	-868.1	296.7	258.8	37.95	7.820	
8,760.1	7,290.0	7,296.7	7,294.4	35.0	6.4	-89.08	648.6	-868.2	290.6	251.3	39.27	7.400 CC, ES	
8,800.0	7,290.0	7,296.4	7,294.0	35.9	6.4	-89.02	648.7	-868.2	293.3	253.2	40.15	7.305 SF	
8,900.0	7,290.0	7,295.5	7,293.2	38.0	6.4	-88.85	648.7	-868.2	322.5	280.1	42.39	7.608	
9,000.0	7,290.0	7,294.7	7,292.3	40.2	6.4	-88.68	648.7	-868.2	376.9	332.2	44.66	8.438	
9,100.0	7,290.0	7,293.8	7,291.4	42.4	6.4	-88.51	648.7	-868.2	447.2	400.3	46.95	9.525	

Anticollision Report

Company:	EnCana Oil & Gas (USA) Inc	Local Co-ordinate Reference:	Well McConahay 1E-34H-H266
Project:	DJ Wattenberg	TVD Reference:	WELL @ 5074.0ft (Original Well Elev)
Reference Site:	S34-T2N-R66W (McConahay)	MD Reference:	WELL @ 5074.0ft (Original Well Elev)
Site Error:	0.0ft	North Reference:	True
Reference Well:	McConahay 1E-34H-H266	Survey Calculation Method:	Minimum Curvature
Well Error:	0.0ft	Output errors are at	2.00 sigma
Reference Wellbore	Hz	Database:	USA EDM 5000 Multi Users DB
Reference Design:	Plan #1	Offset TVD Reference:	Offset Datum

Offset Design S34-T2N-R66W (McConahay) - MCCONAHAY 41-34 (EXISTING) - ENCANA WELL - GYRO													Offset Site Error:	0.0 ft
Survey Program: 200-Gyro													Offset Well Error:	0.0 ft
Reference		Offset		Semi Major Axis			Distance							Warning
Measured Depth (ft)	Vertical Depth (ft)	Measured Depth (ft)	Vertical Depth (ft)	Reference (ft)	Offset (ft)	Highside Toolface (°)	Offset Wellbore Centre +N/-S (ft)	+E/-W (ft)	Between Centres (ft)	Between Ellipses (ft)	Total Uncertainty Axis	Separation Factor		
2,800.0	2,767.8	2,757.2	2,756.6	8.3	2.3	-15.22	731.9	458.1	499.6	492.1	7.52	66.452		
2,900.0	2,866.0	2,857.7	2,857.1	8.6	2.4	-16.01	734.3	457.5	483.2	475.4	7.83	61.695		
3,000.0	2,964.1	2,955.8	2,955.2	9.0	2.5	-16.79	736.1	457.1	466.5	458.3	8.15	57.239		
3,100.0	3,062.3	3,052.0	3,051.4	9.4	2.6	-17.62	738.3	456.8	450.3	441.8	8.47	53.146		
3,200.0	3,160.5	3,150.4	3,149.8	9.8	2.7	-18.48	740.7	457.0	434.4	425.6	8.81	49.337		
3,300.0	3,258.7	3,249.5	3,248.8	10.1	2.8	-19.37	742.8	457.4	418.6	409.4	9.15	45.759		
3,400.0	3,356.9	3,348.0	3,347.3	10.5	2.8	-20.24	744.7	458.3	402.8	393.3	9.49	42.422		
3,500.0	3,455.0	3,445.9	3,445.2	10.9	2.9	-21.13	746.5	459.5	387.1	377.3	9.85	39.302		
3,600.0	3,553.2	3,544.4	3,543.6	11.3	3.0	-22.07	748.5	461.0	371.8	361.6	10.22	36.391		
3,700.0	3,651.4	3,643.0	3,642.2	11.6	3.1	-23.10	750.3	462.4	356.4	345.8	10.60	33.633		
3,800.0	3,749.6	3,740.6	3,739.8	12.0	3.2	-24.31	752.6	463.2	341.4	330.4	11.00	31.034		
3,900.0	3,847.8	3,839.3	3,838.4	12.4	3.3	-25.61	755.0	464.4	326.7	315.3	11.42	28.602		
4,000.0	3,945.9	3,939.0	3,938.1	12.8	3.4	-27.00	757.1	465.7	312.0	300.1	11.87	26.294		
4,100.0	4,044.1	4,038.7	4,037.8	13.1	3.4	-28.45	758.7	467.3	297.0	284.7	12.33	24.095		
4,200.0	4,142.3	4,137.1	4,136.2	13.5	3.5	-29.99	760.1	469.0	282.1	269.3	12.81	22.024		
4,300.0	4,240.5	4,234.8	4,233.8	13.9	3.6	-31.86	761.8	470.0	267.7	254.3	13.34	20.066		
4,400.0	4,338.7	4,332.3	4,331.3	14.3	3.7	-34.13	764.1	470.2	254.0	240.0	13.93	18.231		
4,500.0	4,436.8	4,430.1	4,429.0	14.6	3.8	-36.77	766.7	469.9	241.0	226.5	14.58	16.530		
4,600.0	4,535.0	4,528.1	4,527.0	15.0	3.9	-39.70	769.7	469.6	229.0	213.7	15.29	14.978		
4,700.0	4,633.2	4,626.3	4,625.2	15.4	4.0	-42.99	772.7	469.2	217.7	201.7	16.05	13.561		
4,800.0	4,731.4	4,724.0	4,722.8	15.8	4.0	-46.46	776.0	469.2	207.5	190.7	16.85	12.314		
4,900.0	4,829.6	4,821.5	4,820.3	16.1	4.1	-50.13	780.0	469.6	198.7	181.0	17.68	11.238		
5,000.0	4,927.7	4,919.5	4,918.1	16.5	4.2	-54.07	784.4	470.1	191.3	172.7	18.54	10.317		
5,100.0	5,025.9	5,017.8	5,016.3	16.9	4.3	-58.40	789.1	470.2	185.2	165.8	19.43	9.533		
5,200.0	5,124.1	5,116.6	5,115.0	17.3	4.4	-63.12	793.9	469.9	180.5	160.1	20.33	8.877		
5,300.0	5,222.3	5,216.1	5,214.4	17.6	4.5	-68.24	798.2	469.3	176.8	155.6	21.22	8.332		
5,400.0	5,320.5	5,315.8	5,314.0	18.0	4.6	-73.67	801.9	468.7	174.0	151.9	22.06	7.888		
5,500.0	5,418.6	5,414.8	5,413.0	18.4	4.7	-79.26	805.0	468.2	172.5	149.6	22.81	7.559		
5,574.2	5,491.5	5,488.6	5,486.8	18.7	4.7	-83.48	807.2	467.9	172.1	148.8	23.30	7.387		
5,600.0	5,516.8	5,514.1	5,512.2	18.8	4.7	-84.94	807.9	467.8	172.2	148.7	23.46	7.340		
5,700.0	5,615.0	5,612.1	5,610.2	19.1	4.8	-90.67	810.3	467.2	173.6	149.6	23.97	7.242		
5,800.0	5,713.2	5,710.2	5,708.3	19.5	4.9	-96.45	812.3	466.1	177.1	152.7	24.35	7.272		
5,900.0	5,811.4	5,808.6	5,806.7	19.9	5.0	-102.14	813.9	464.6	182.3	157.7	24.58	7.418		
6,000.0	5,909.5	5,906.9	5,905.0	20.3	5.1	-107.44	815.6	463.3	189.2	164.5	24.69	7.665		
6,100.0	6,007.7	6,004.8	6,002.8	20.6	5.2	-112.29	817.4	461.9	197.8	173.0	24.71	8.003		
6,200.0	6,105.9	6,102.8	6,100.8	21.0	5.3	-116.81	818.9	460.4	207.8	183.1	24.66	8.426		
6,300.0	6,204.1	6,201.9	6,199.9	21.4	5.3	-121.07	819.9	458.8	218.8	194.3	24.55	8.914		
6,400.0	6,302.3	6,301.0	6,299.0	21.8	5.4	-124.98	820.6	457.7	230.6	206.1	24.40	9.448		
6,500.0	6,400.4	6,400.2	6,398.1	22.2	5.5	-128.60	820.9	457.0	242.8	218.6	24.24	10.018		
6,600.0	6,498.6	6,498.2	6,496.2	22.5	5.6	-131.89	820.9	456.4	255.8	231.7	24.07	10.625		
6,700.0	6,596.8	6,595.9	6,593.9	22.9	5.7	-134.81	821.1	455.8	269.6	245.7	23.93	11.266		
6,800.0	6,695.1	6,693.5	6,691.5	23.2	5.8	-115.68	821.4	454.9	282.6	258.9	23.76	11.893		
6,900.0	6,793.9	6,793.3	6,791.2	23.4	5.9	-59.61	821.2	454.2	281.8	258.7	23.14	12.177		
7,000.0	6,890.5	6,888.5	6,886.5	23.4	5.9	-40.66	820.7	453.5	265.0	243.0	21.96	12.068		
7,100.0	6,982.0	6,981.8	6,979.7	23.3	6.0	-38.82	820.2	452.8	233.6	213.4	20.20	11.566		
7,200.0	7,065.6	7,065.2	7,063.1	23.0	6.1	-46.03	819.6	452.5	190.5	172.2	18.31	10.404		
7,300.0	7,138.9	7,138.1	7,136.0	22.7	6.2	-62.85	818.9	452.1	143.8	125.6	18.14	7.928		
7,400.0	7,199.5	7,199.3	7,197.2	22.3	6.2	-86.33	818.3	451.4	114.5	94.1	20.36	5.622		
7,413.7	7,206.7	7,206.7	7,204.6	22.3	6.2	-89.35	818.2	451.3	113.9	93.3	20.63	5.522 CC, ES, SF		
7,500.0	7,245.6	7,246.0	7,243.9	22.0	6.3	-103.33	817.9	451.0	136.3	115.1	21.24	6.416		
7,600.0	7,275.9	7,276.0	7,273.9	21.7	6.3	-106.51	817.6	450.9	203.0	181.9	21.08	9.630		
7,700.0	7,289.3	7,289.0	7,286.9	21.5	6.3	-95.20	817.5	450.8	288.6	267.2	21.38	13.497		

CC - Min centre to center distance or convergent point, SF - min separation factor, ES - min ellipse separation

Anticollision Report

Company:	EnCana Oil & Gas (USA) Inc	Local Co-ordinate Reference:	Well McConahay 1E-34H-H266
Project:	DJ Wattenberg	TVD Reference:	WELL @ 5074.0ft (Original Well Elev)
Reference Site:	S34-T2N-R66W (McConahay)	MD Reference:	WELL @ 5074.0ft (Original Well Elev)
Site Error:	0.0ft	North Reference:	True
Reference Well:	McConahay 1E-34H-H266	Survey Calculation Method:	Minimum Curvature
Well Error:	0.0ft	Output errors are at	2.00 sigma
Reference Wellbore	Hz	Database:	USA EDM 5000 Multi Users DB
Reference Design:	Plan #1	Offset TVD Reference:	Offset Datum

Offset Design											S34-T2N-R66W (McConahay) - MCCONAHAY 41-34 (EXISTING) - ENCANA WELL - GYRO		Offset Site Error:		0.0 ft
Survey Program: 200-Gyro													Offset Well Error:		0.0 ft
Reference		Offset		Semi Major Axis			Distance						Warning		
Measured Depth (ft)	Vertical Depth (ft)	Measured Depth (ft)	Vertical Depth (ft)	Reference (ft)	Offset (ft)	Highside Toolface (°)	Offset Wellbore Centre		Between Centres (ft)	Between Ellipses (ft)	Total Uncertainty Axis	Separation Factor			
							+N/-S (ft)	+E/-W (ft)							
7,800.0	7,290.0	7,289.6	7,287.6	21.5	6.3	-89.35	817.4	450.8	381.1	359.0	22.04	17.287			
7,900.0	7,290.0	7,289.6	7,287.5	21.8	6.3	-89.33	817.4	450.8	476.6	453.5	23.10	20.634			

Anticollision Report

Company:	EnCana Oil & Gas (USA) Inc	Local Co-ordinate Reference:	Well McConahay 1E-34H-H266
Project:	DJ Wattenberg	TVD Reference:	WELL @ 5074.0ft (Original Well Elev)
Reference Site:	S34-T2N-R66W (McConahay)	MD Reference:	WELL @ 5074.0ft (Original Well Elev)
Site Error:	0.0ft	North Reference:	True
Reference Well:	McConahay 1E-34H-H266	Survey Calculation Method:	Minimum Curvature
Well Error:	0.0ft	Output errors are at	2.00 sigma
Reference Wellbore	Hz	Database:	USA EDM 5000 Multi Users DB
Reference Design:	Plan #1	Offset TVD Reference:	Offset Datum

Reference Depths are relative to WELL @ 5074.0ft (Original Well Elev)

Offset Depths are relative to Offset Datum

Central Meridian is -105.500000 °

Coordinates are relative to: McConahay 1E-34H-H266

Coordinate System is US State Plane 1983, Colorado Northern Zone

Grid Convergence at Surface is: 0.48°

