



NABORS

**COMPLETION
& PRODUCTION
SERVICES CO.**

SONIC LOG

Company		MULL DRILLING COMPANY, INC.	
Well		GERWECK #1-4	
Field		CHEYENNE WELLS	
County		CHEYENNE	
State		COLORADO	
Location:		API # : 05-017-07772-00	
Permanent Datum		GROUND LEVEL	
Log Measured From		KELLY BUSHING 11' A.G.L.	
Drilling Measured From		KELLY BUSHING	
SEC 4 TWP 14S RGE 44W		Elevation	
660' FNL & 660' FWL		CDL/CNL/PE DIL/MEL	
4261		K.B. 4272 D.F. 4270 G.L. 4261	
Date	11/23/13		
Run Number	TWO		
Depth Driller	5500		
Depth Logger	5499		
Bottom Logged Interval	5487		
Top Log Interval	1700		
Casing Driller	8 5/8" @ 1733'		
Casing Logger	1728		
Bit Size	7 7/8"		
Type Fluid in Hole	CHEMICAL MUD	CHLORIDES 1,100 PPM	
Density / Viscosity	9.2/64		
pH / Fluid Loss	9.07 / 2		
Source of Sample	FLOWLINE		
Rim @ Meas. Temp	.950 @ 55F		
Rmf @ Meas. Temp	.713 @ 55F		
Rmc @ Meas. Temp	1.14 @ 55F		
Source of Rmf / Rmc	MEASUREMENT		
Rim @ BHT	.402 @ 130F		
Time Circulation Stopped	5.5 HOURS		
Time Logger on Bottom	3:45 A.M.		
Maximum Recorded Temperature	130F		
Equipment Number	4854		
Location	HAYS, KANSAS		
Recorded By	JEFF LUEBBERS		
Witnessed By	PHIL ASKEY		

<<< Fold Here >>>

All interpretations are opinions based on inferences from electrical or other measurements and we cannot and do not guarantee the accuracy or correctness of any interpretation, and we shall not, except in the case of gross or willful negligence on our part, be liable or responsible for any loss, costs, damages, or expenses incurred or sustained by anyone resulting from any interpretation made by any of our officers, agents or employees. These interpretations are also subject to our general terms and conditions set out in our current Price Schedule.

Comments

THANK YOU FOR USING "NABORS" HAYS, KANSAS (785) 628 6395
DIRECTIONS
CHEYENNE WELLS, CO. 3N. ON HWY 385 TO "RD. U", 1/8 E., S. INTO

Database File:

011813pe.db

Dataset Pathname:

pass7.3

Presentation Format:

slt

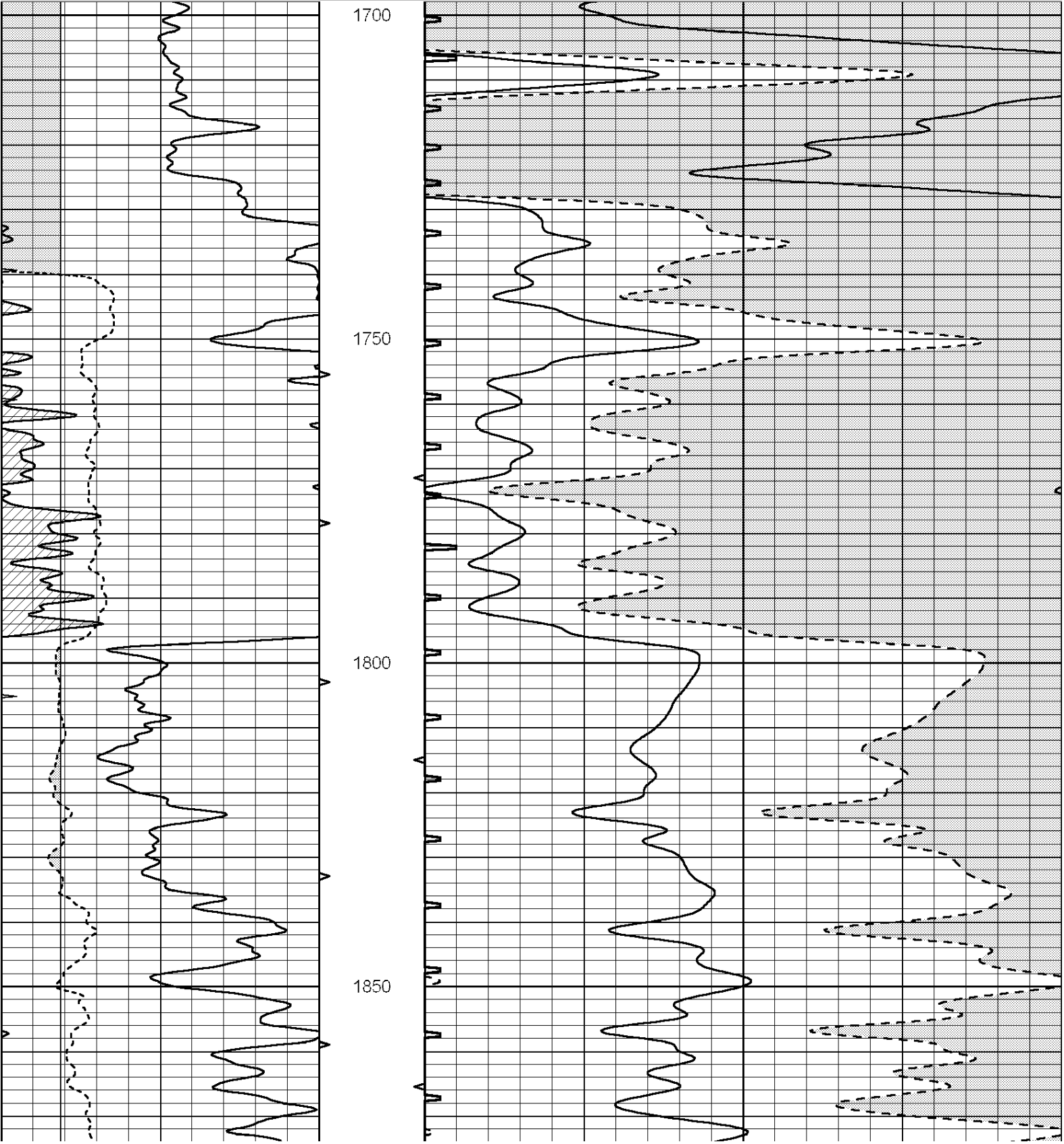
Dataset Creation:

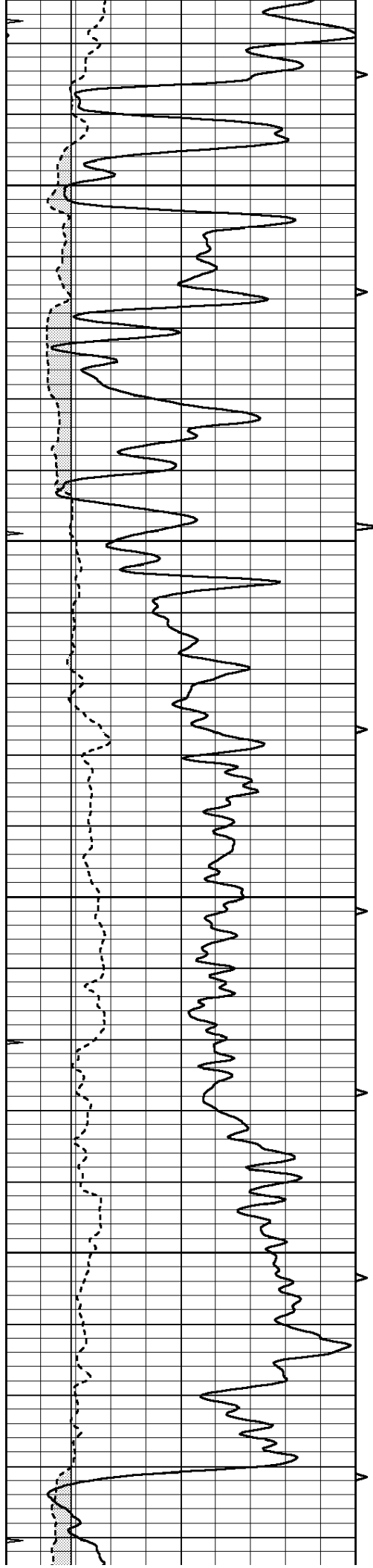
Sat Nov 23 08:31:11 2013

Charted by:

Depth in Feet scaled 1:240

0	GAMMA RAY (GAPI)	150	ABHV	140	DELTA TIME (usec/ft)		40	
6	CALIPER (in)	16	10 (ft3)	0	30	SONIC POROSITY (pu)		-10
-----			-----					
0	MINMK	20	TBHV	0	ITT (msec)	20		
			0 (ft3)	10				



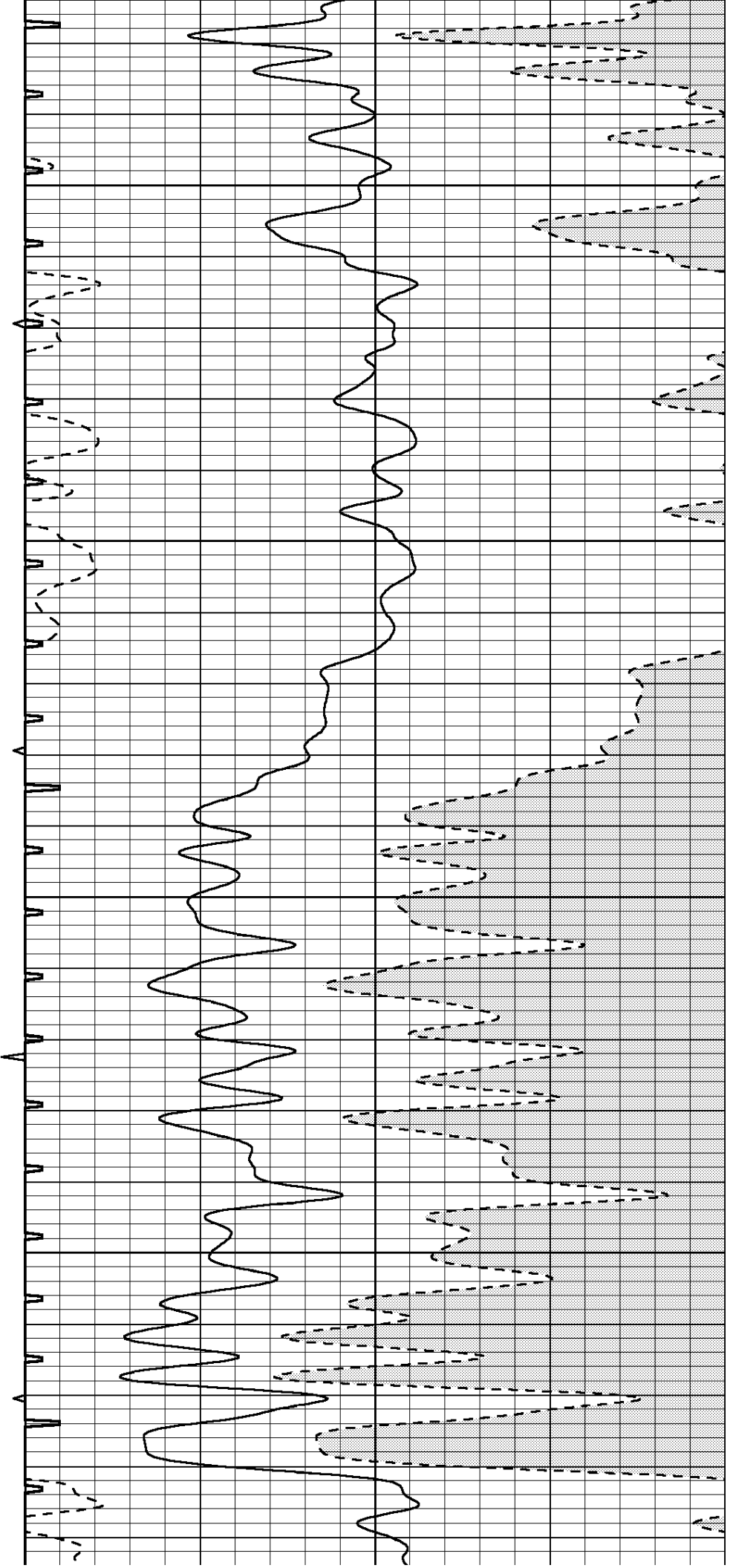


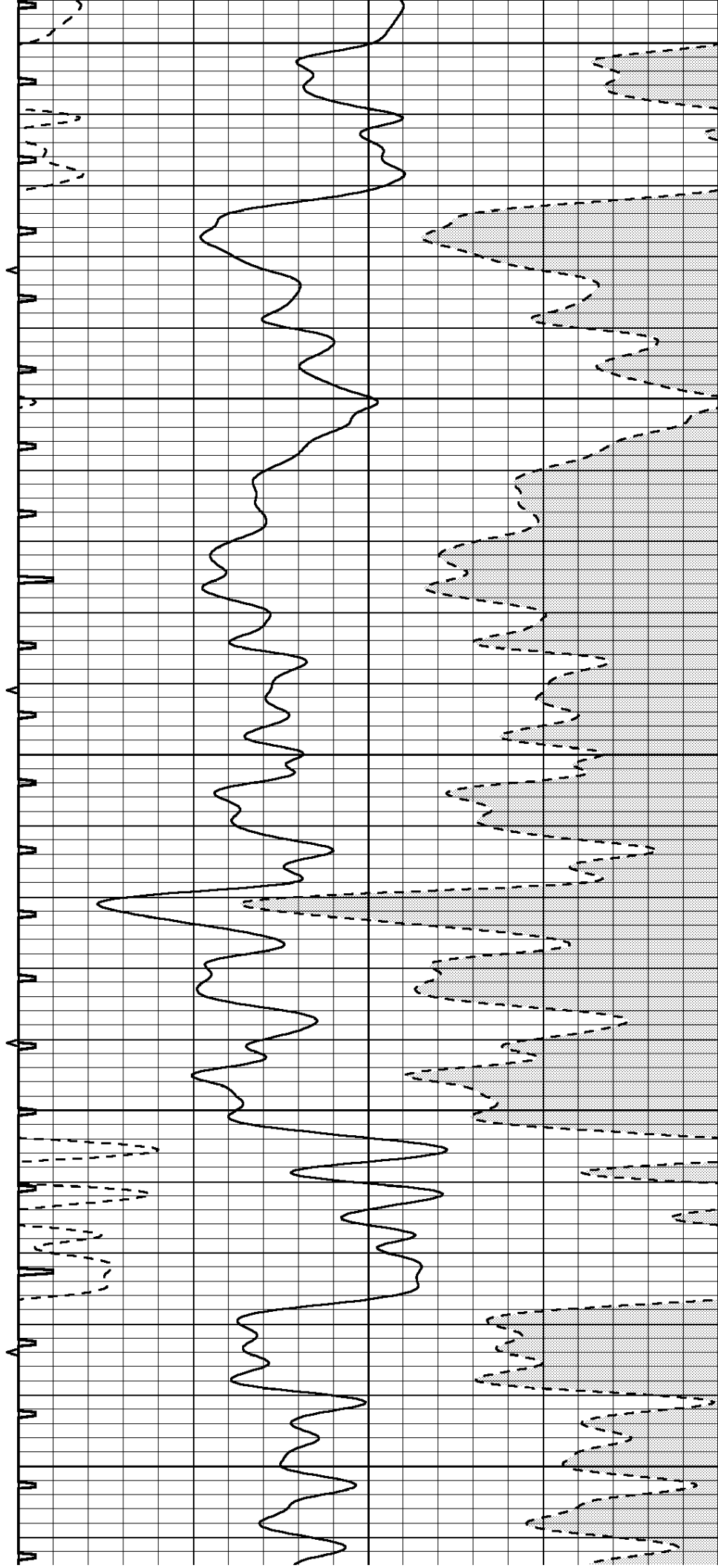
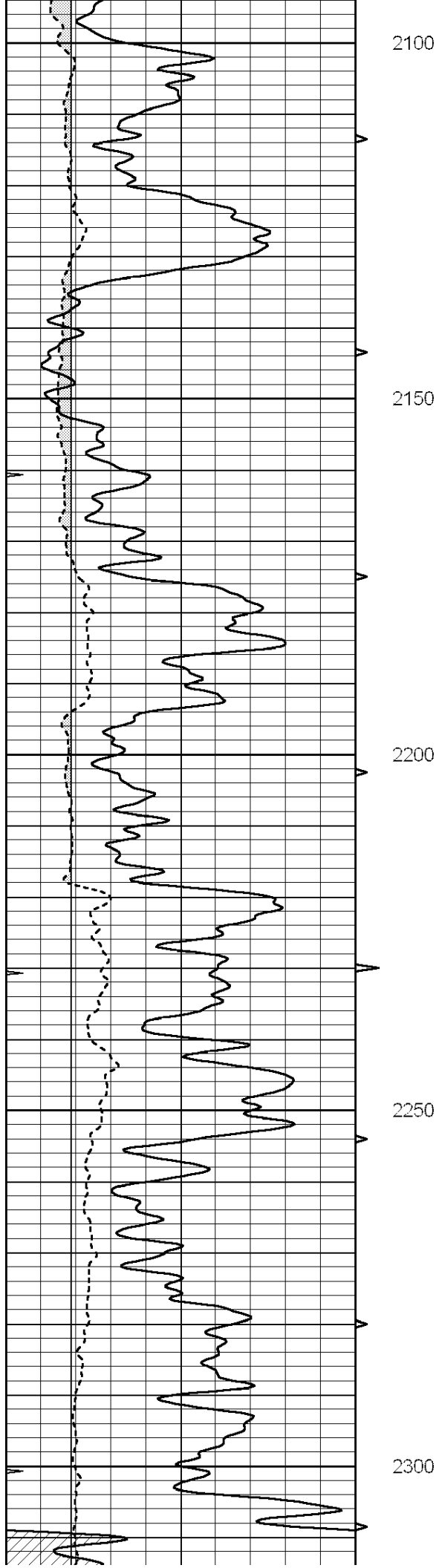
1900

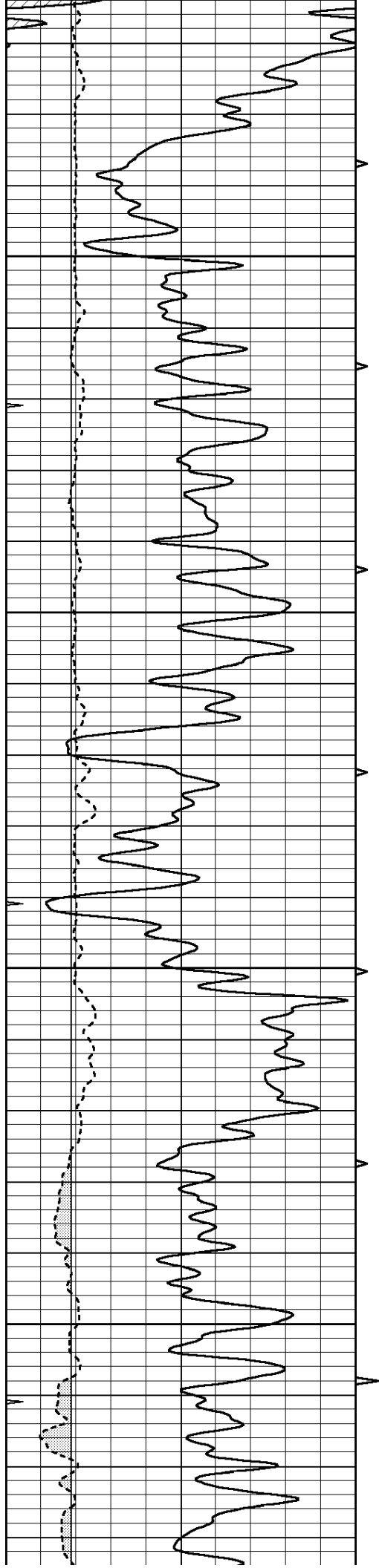
1950

2000

2050





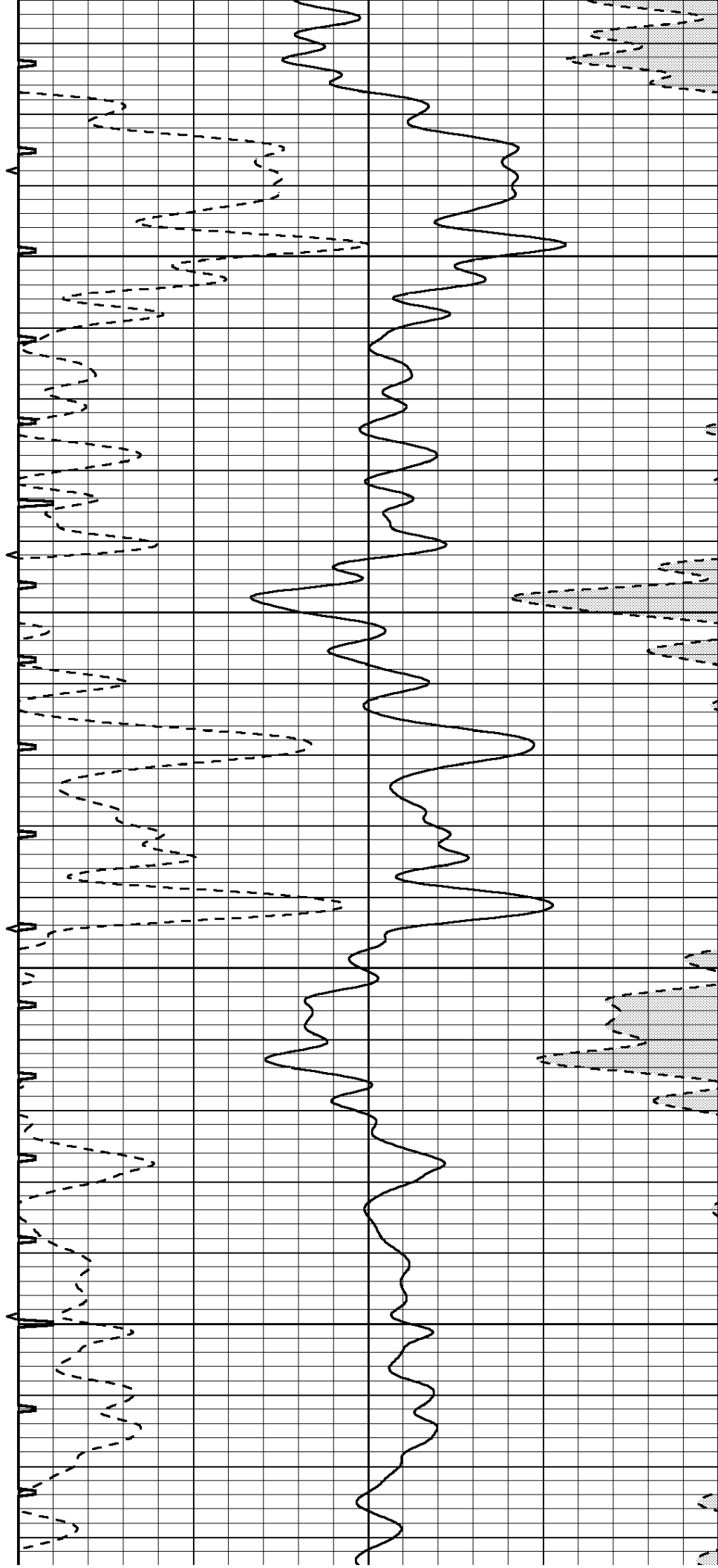


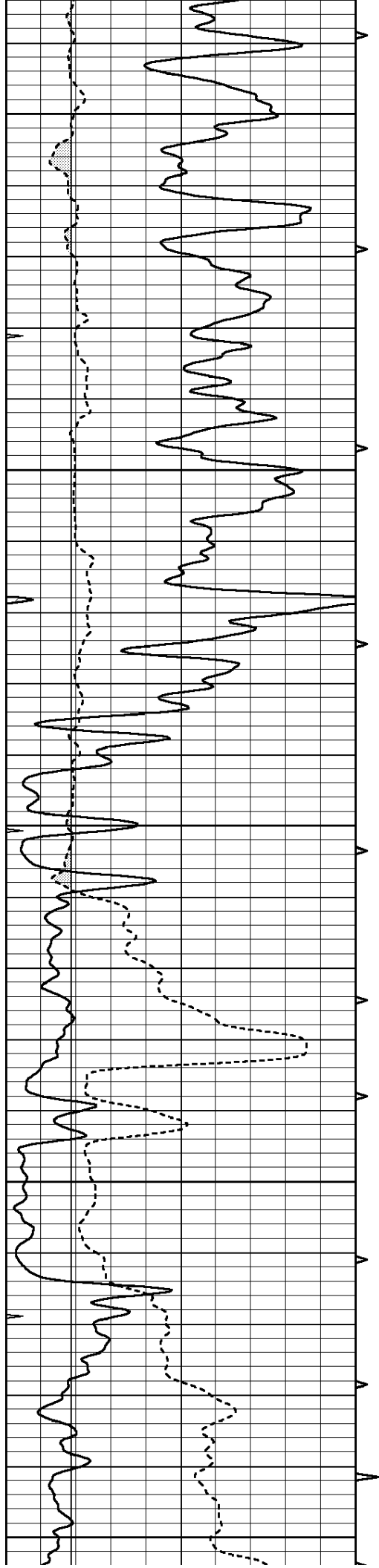
2350

2400

2450

2500





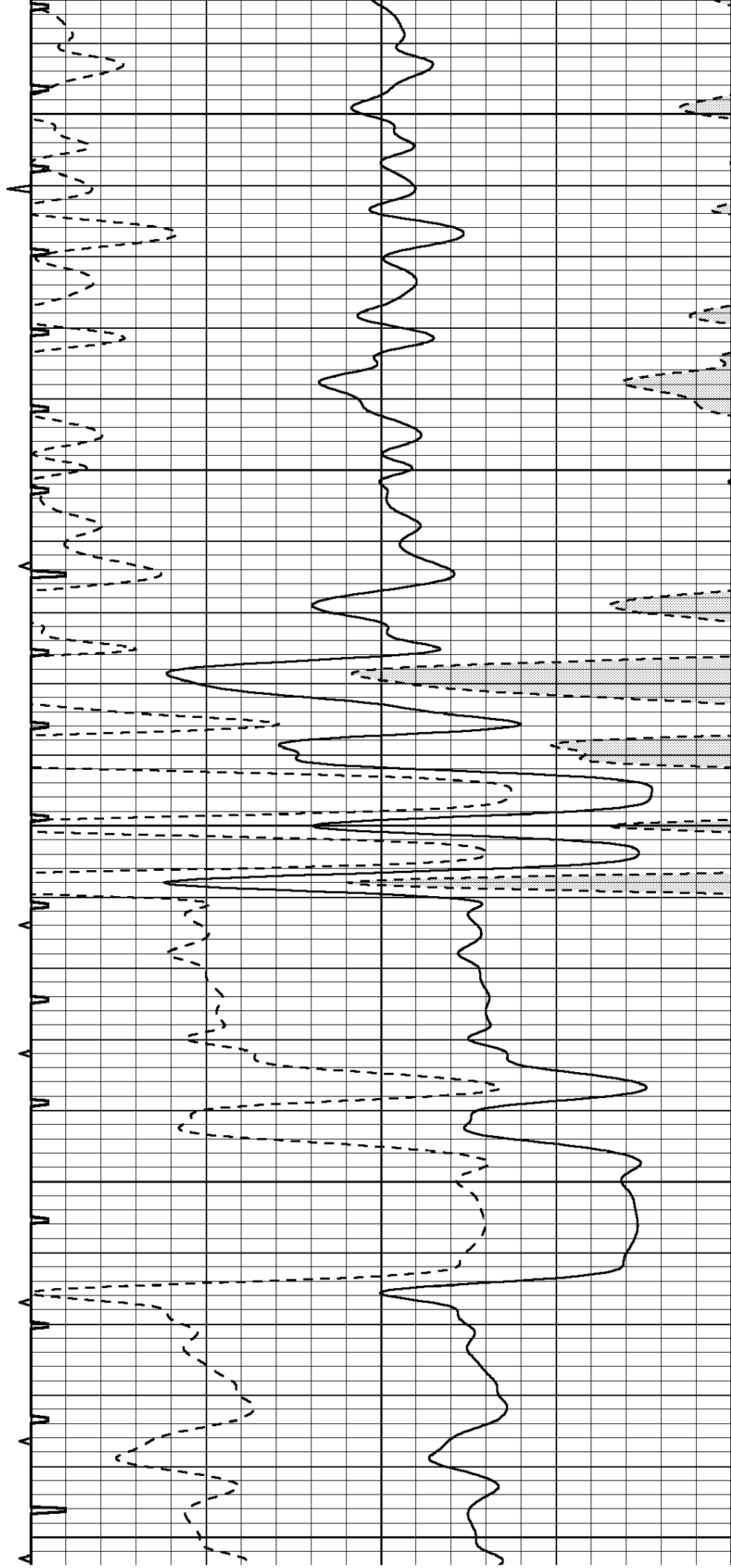
2550

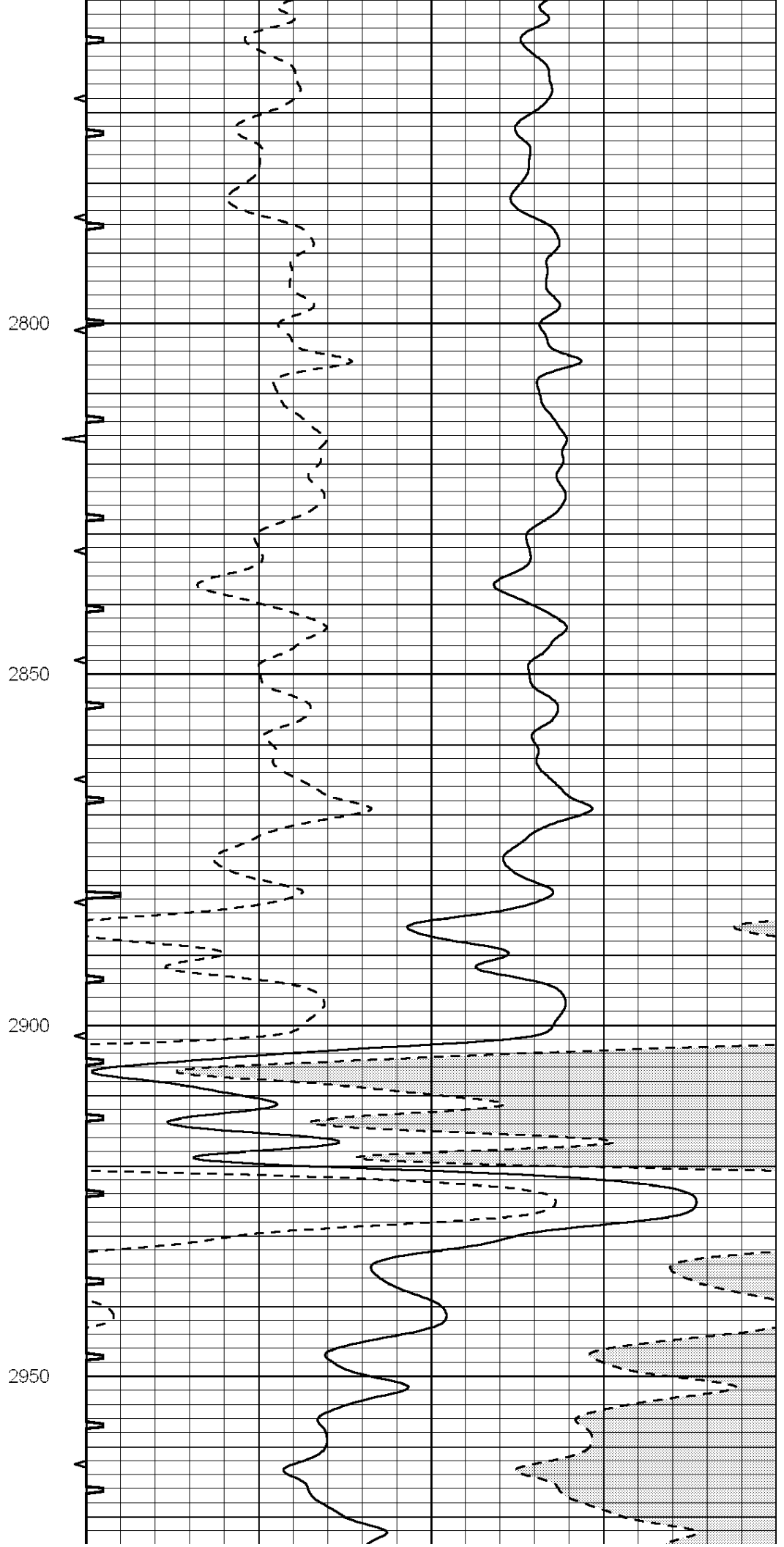
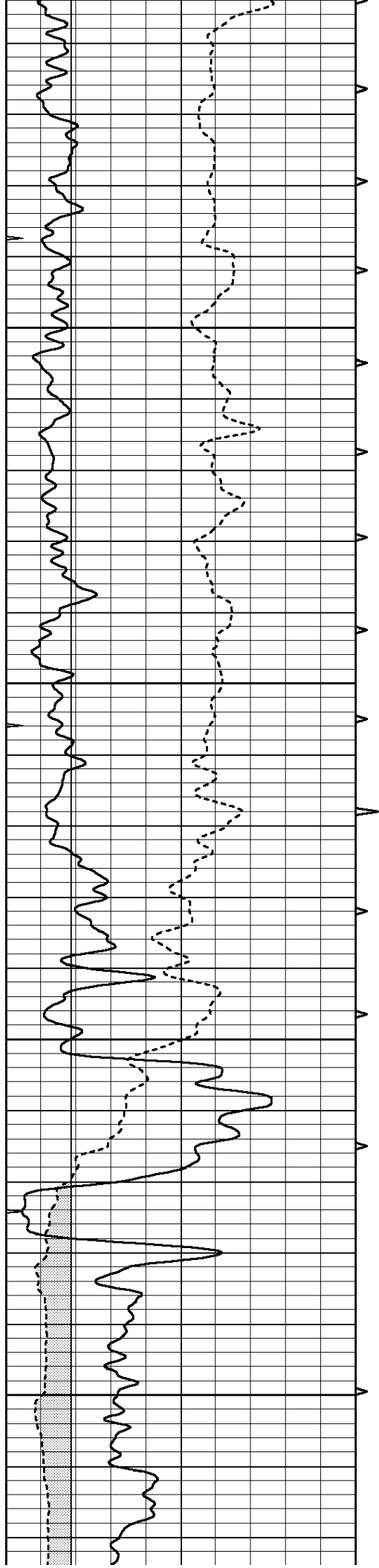
2600

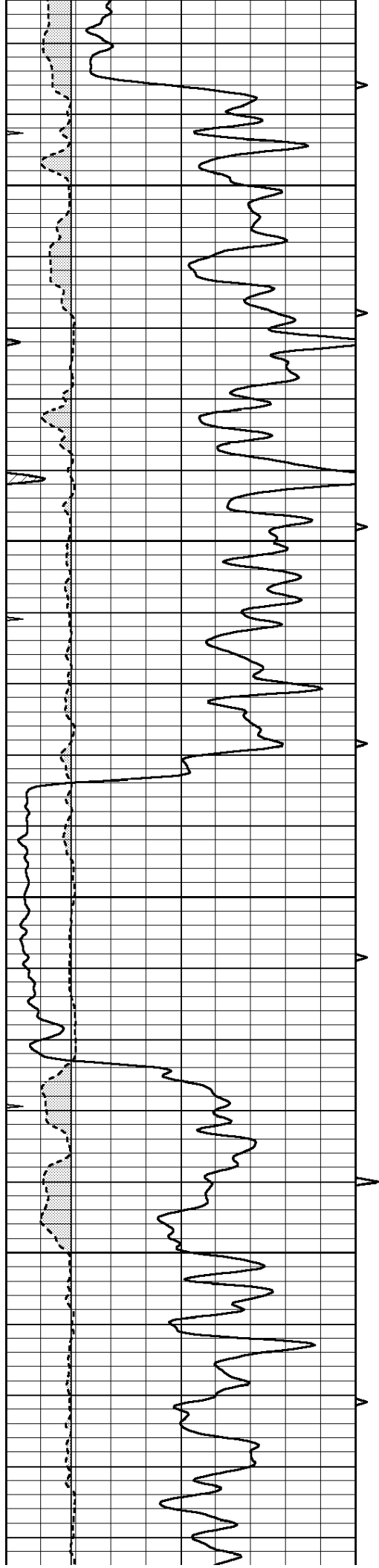
2650

2700

2750





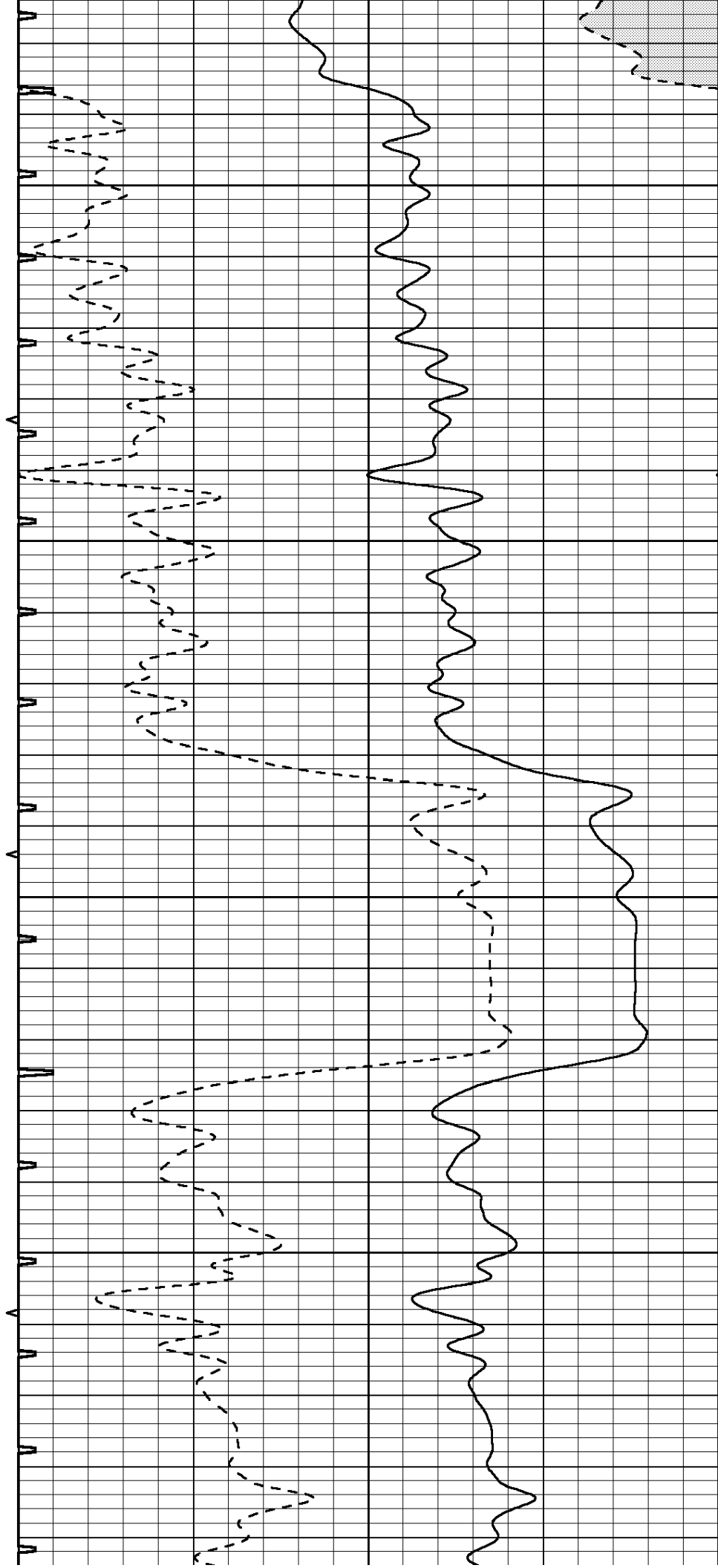


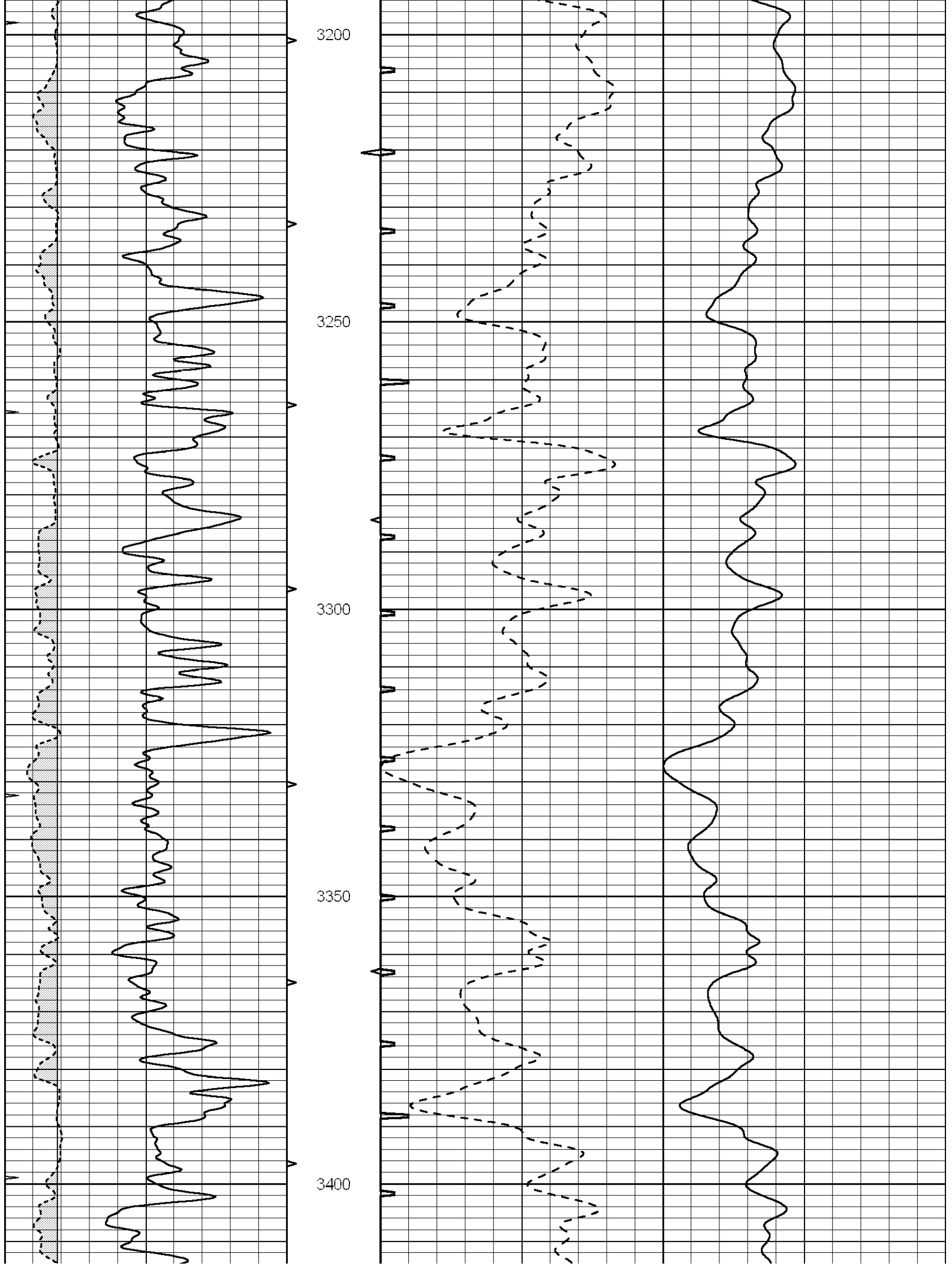
3000

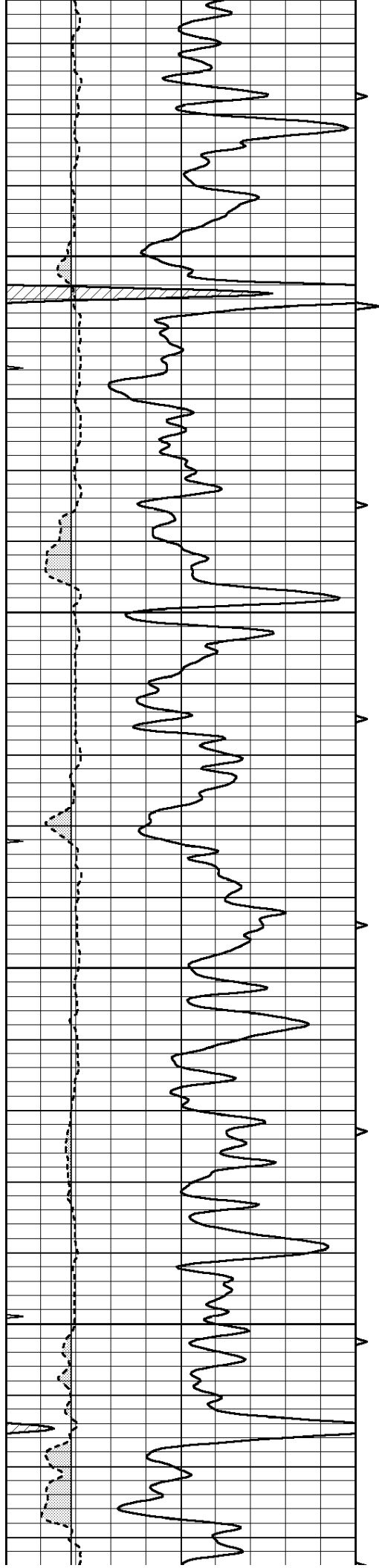
3050

3100

3150





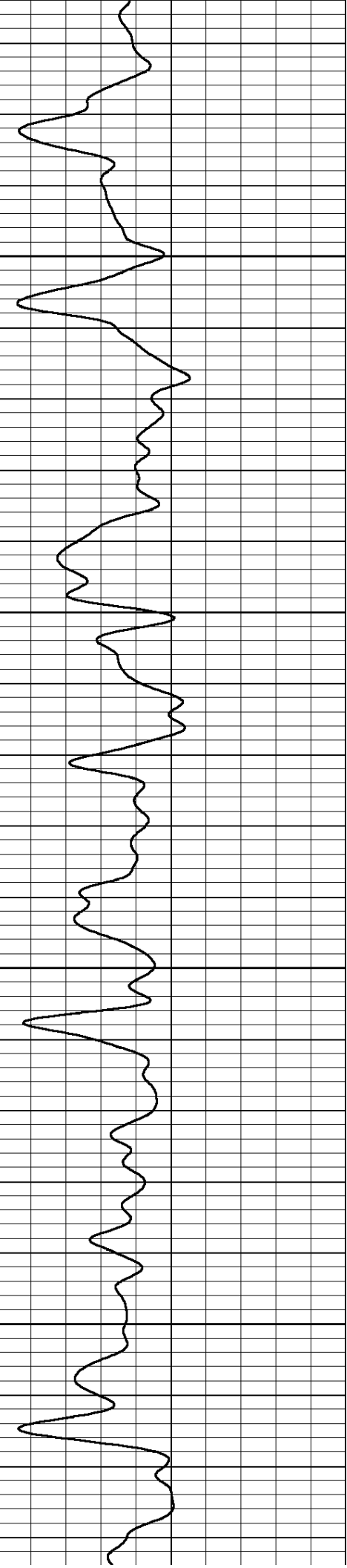
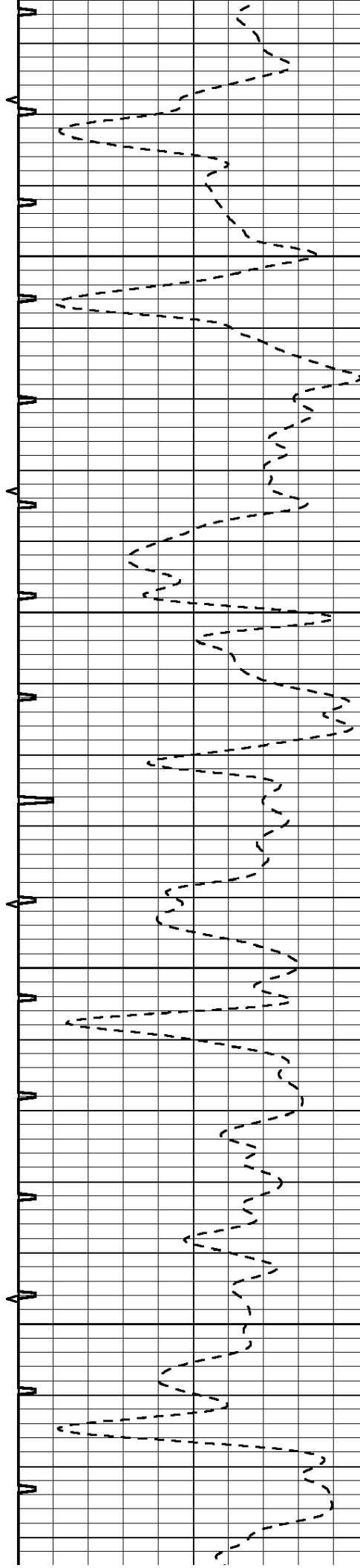


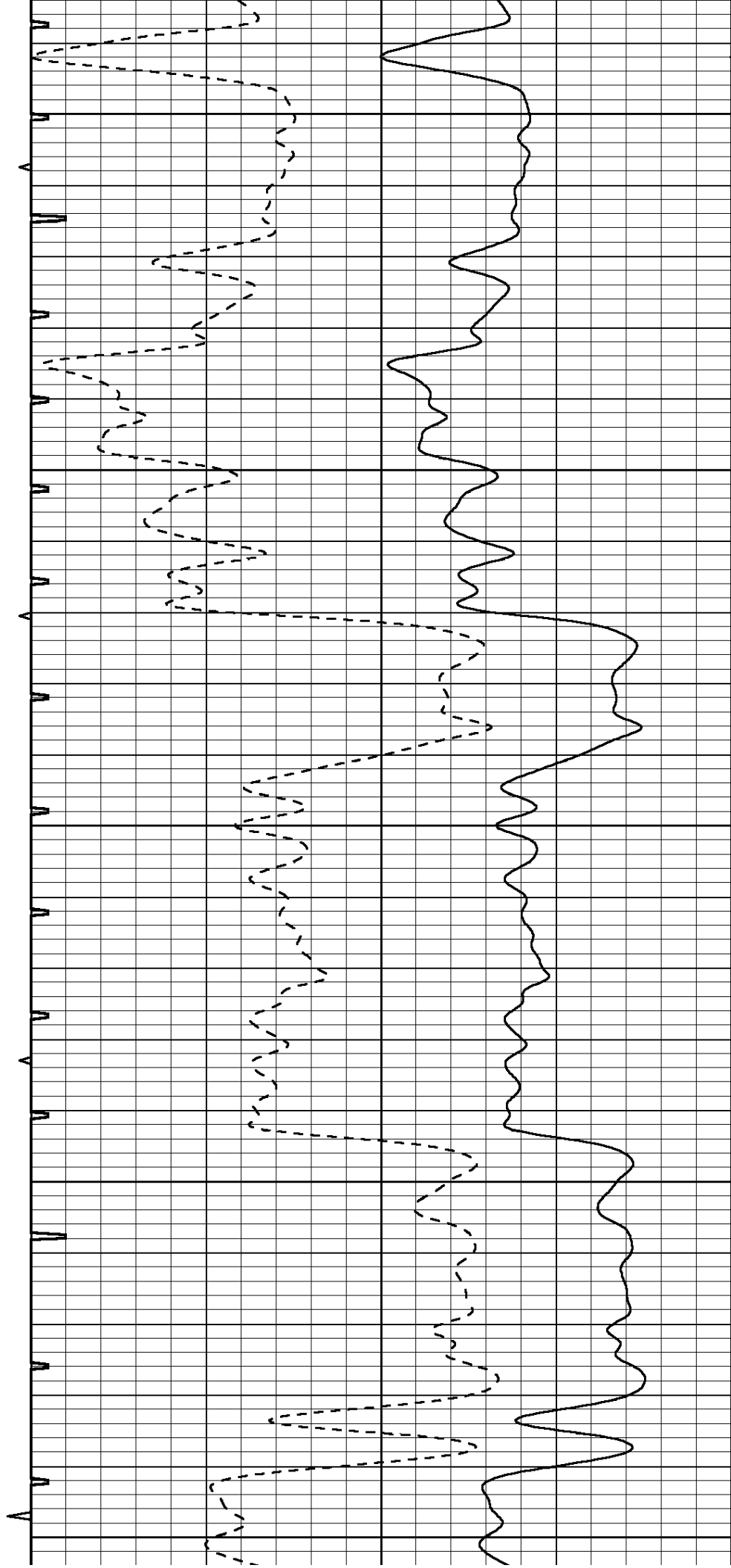
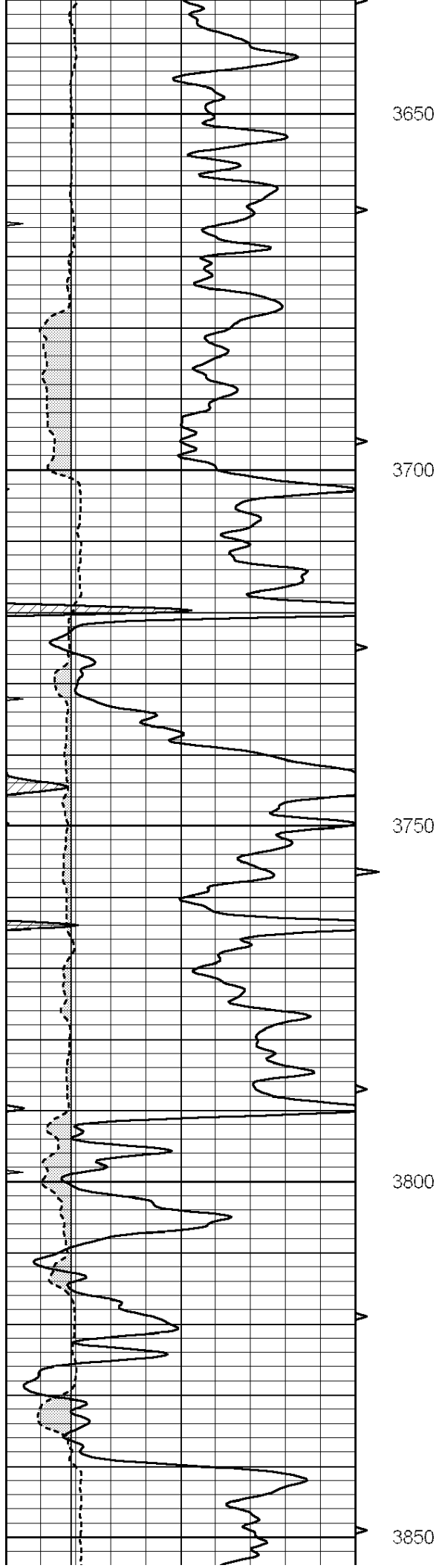
3450

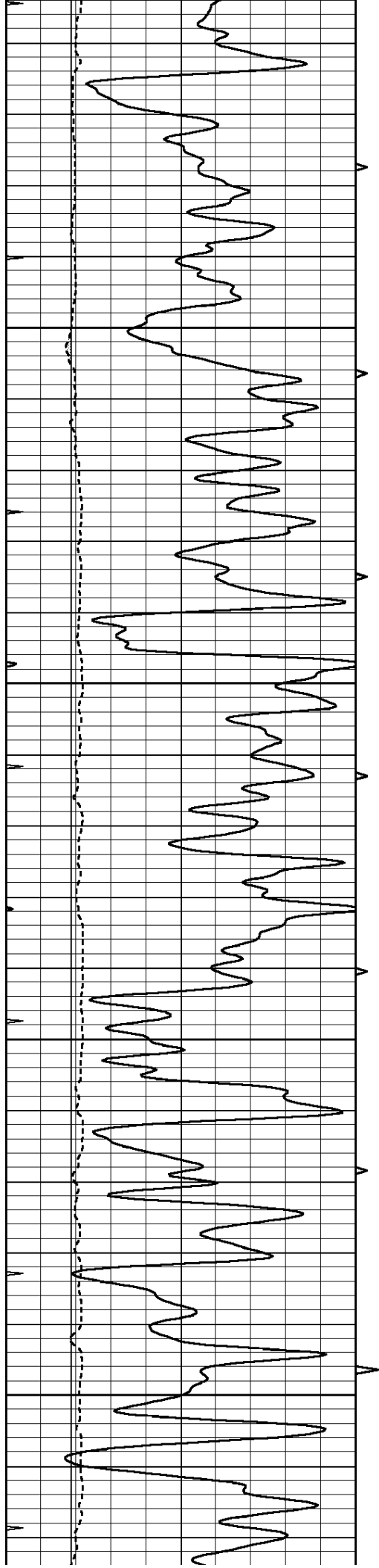
3500

3550

3600





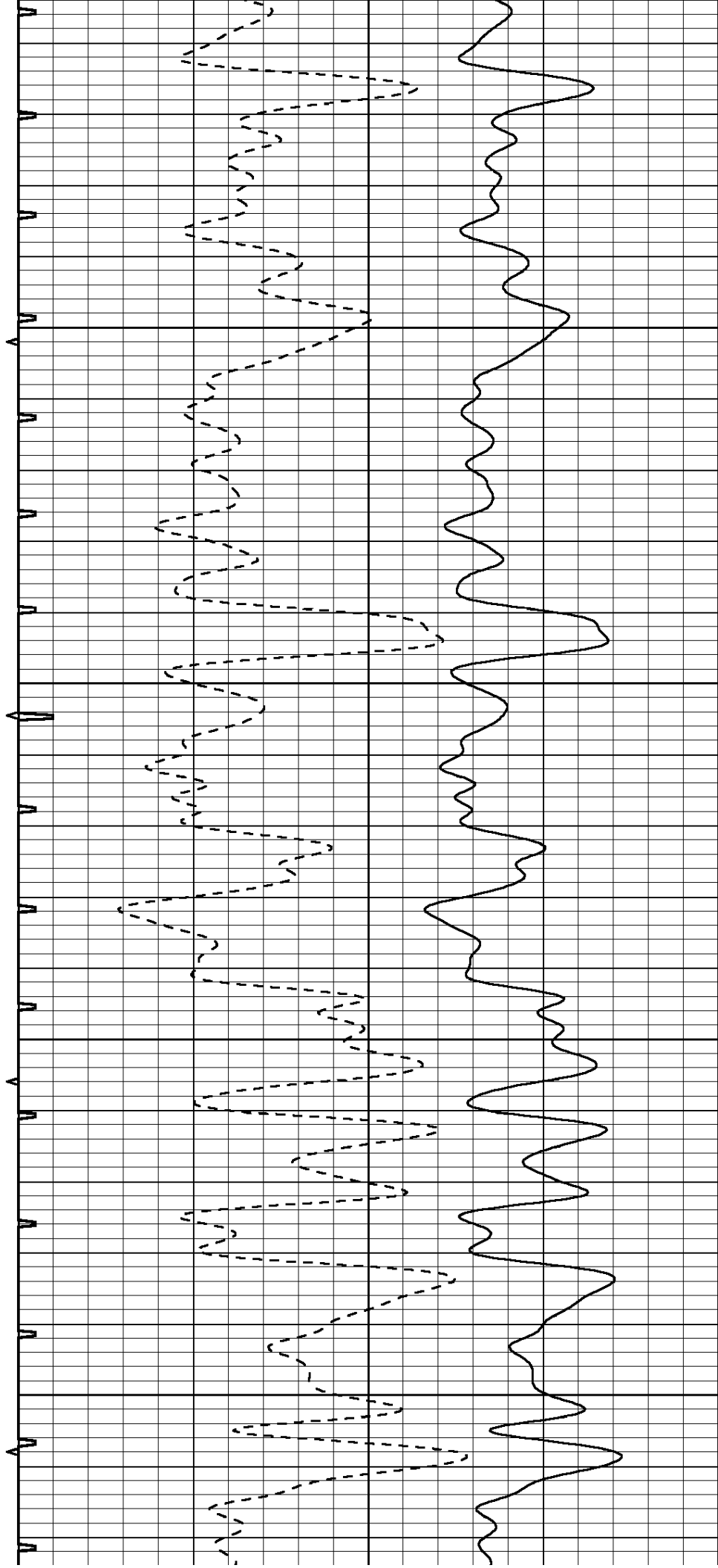


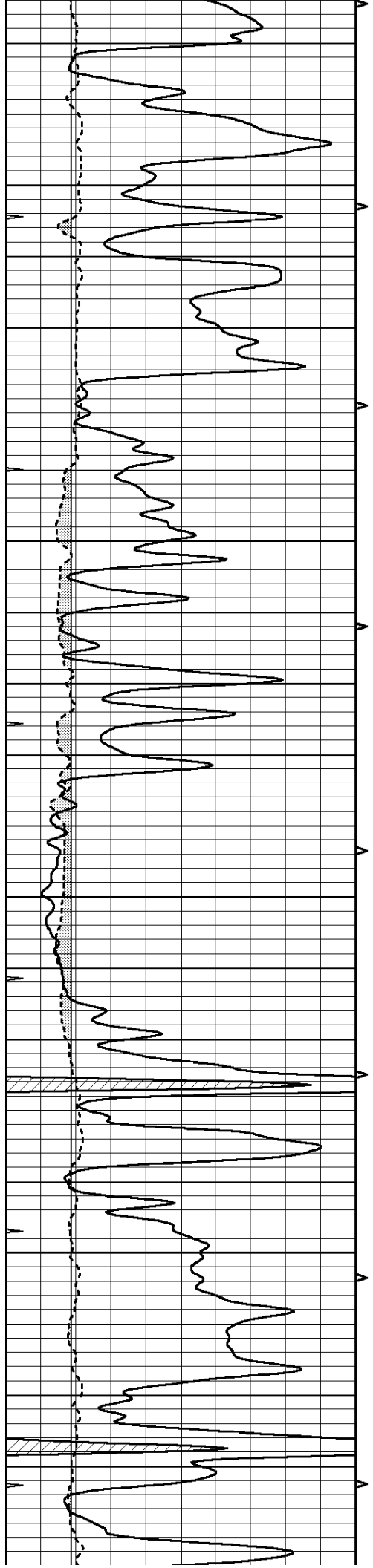
3900

3950

4000

4050



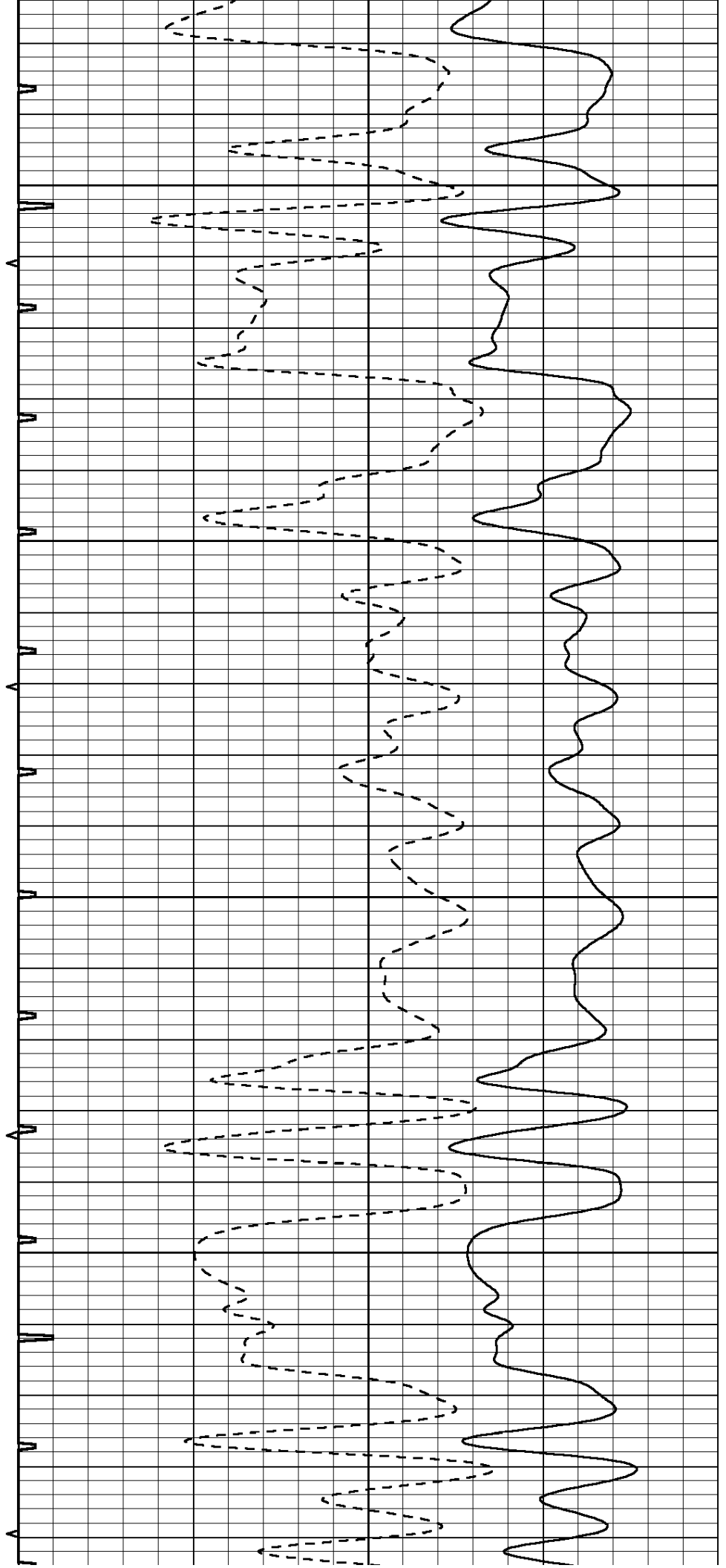


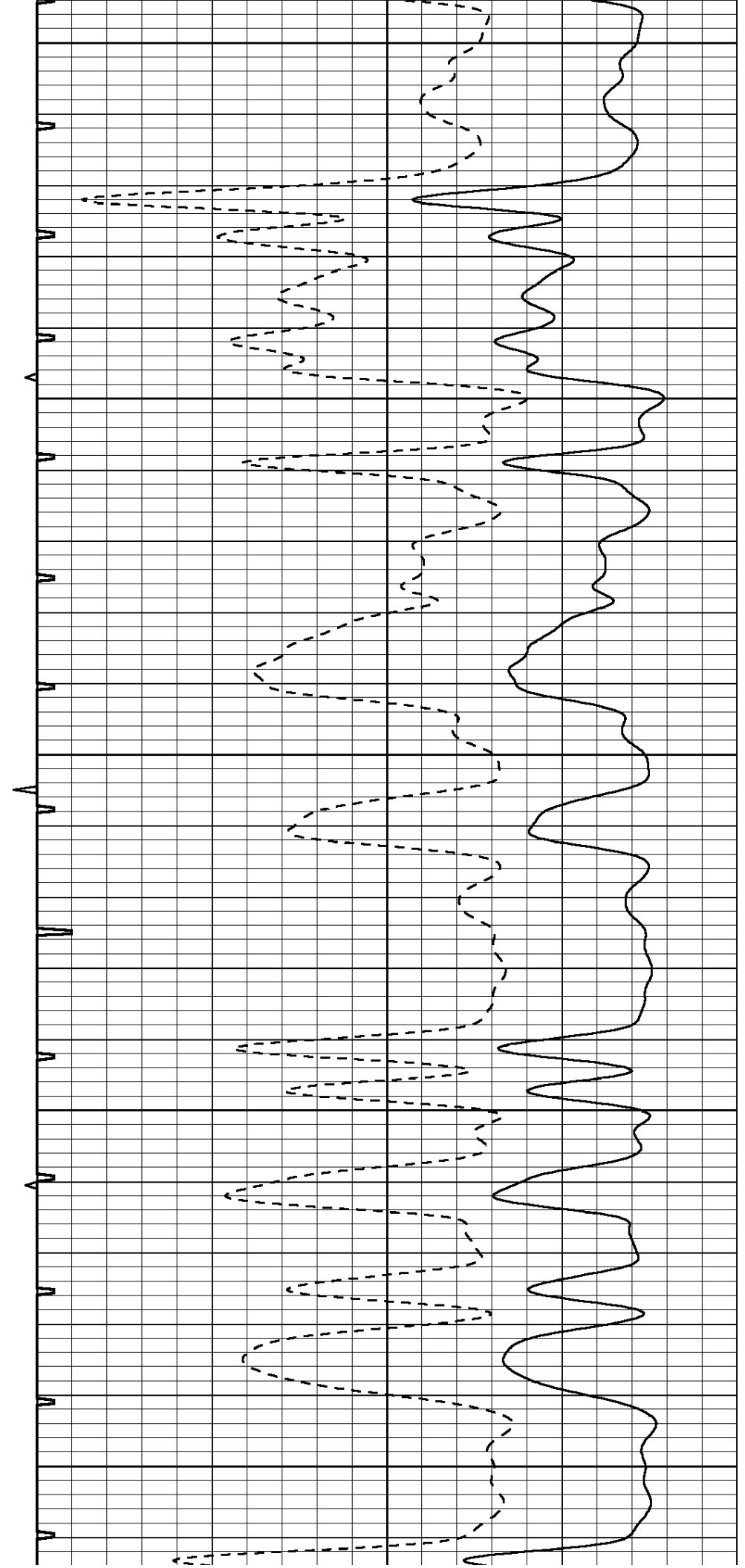
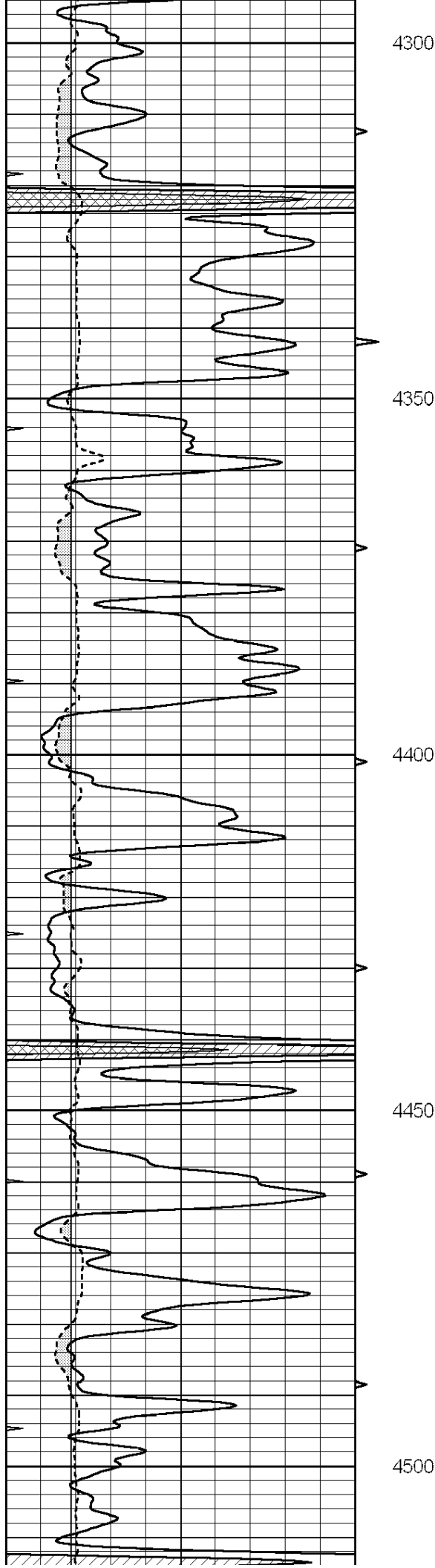
4100

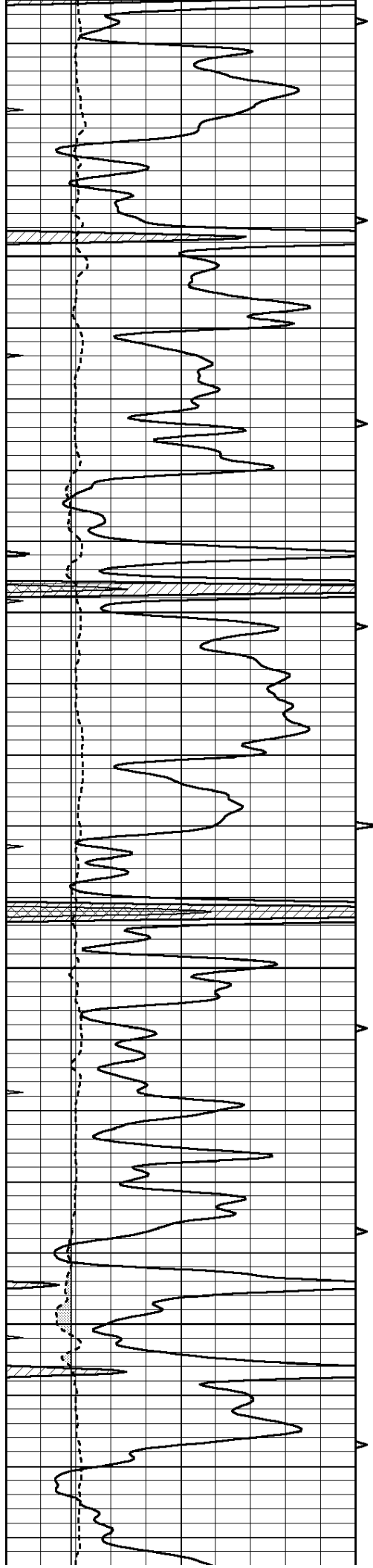
4150

4200

4250





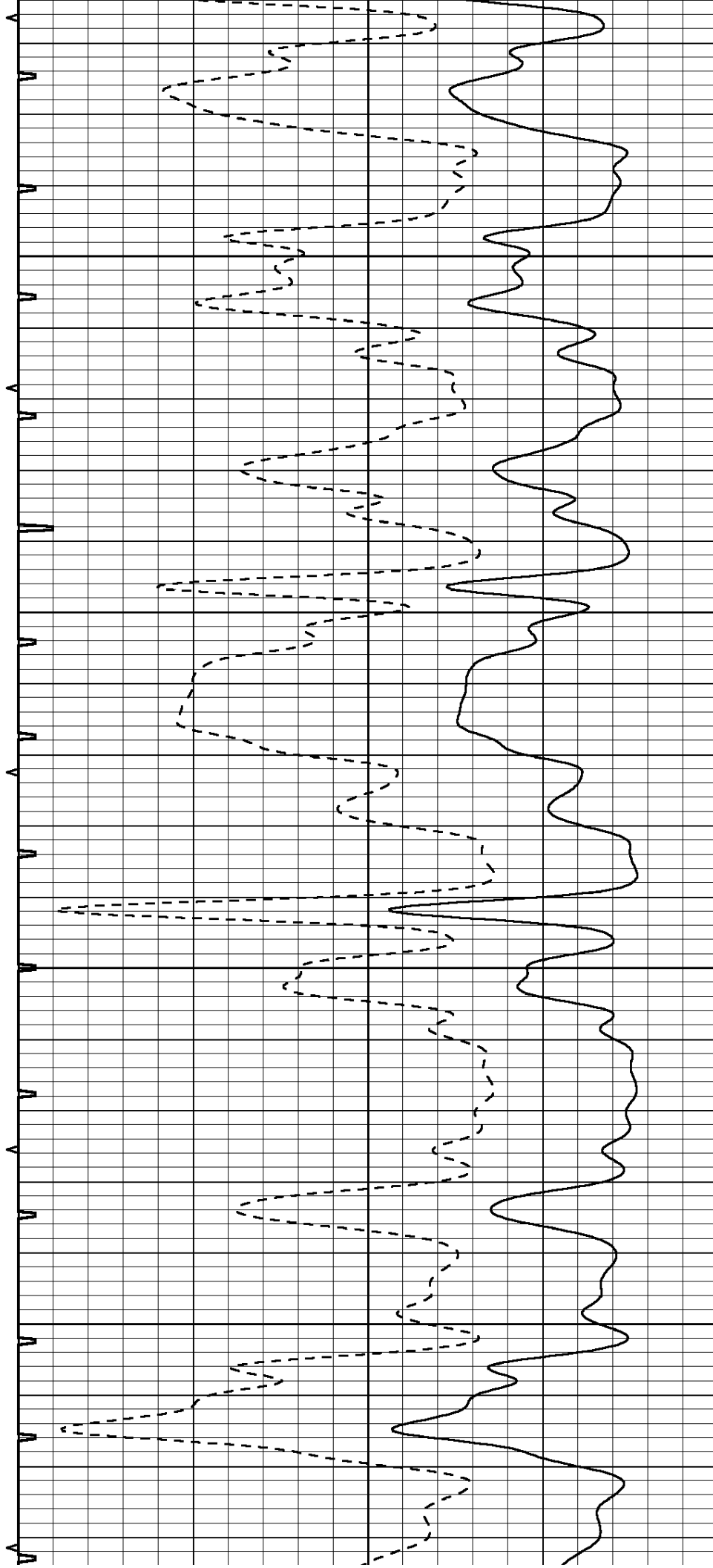


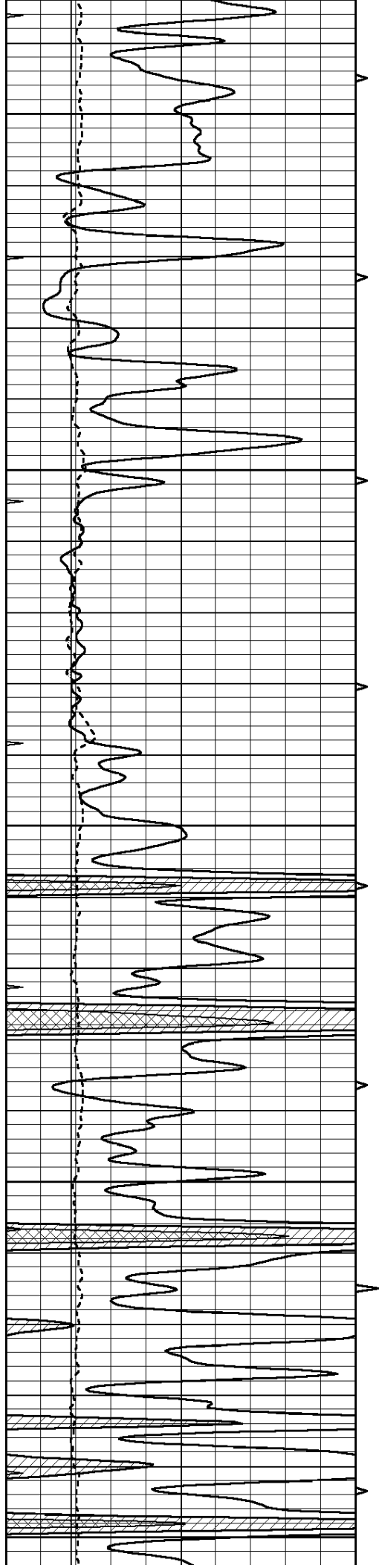
4550

4600

4650

4700





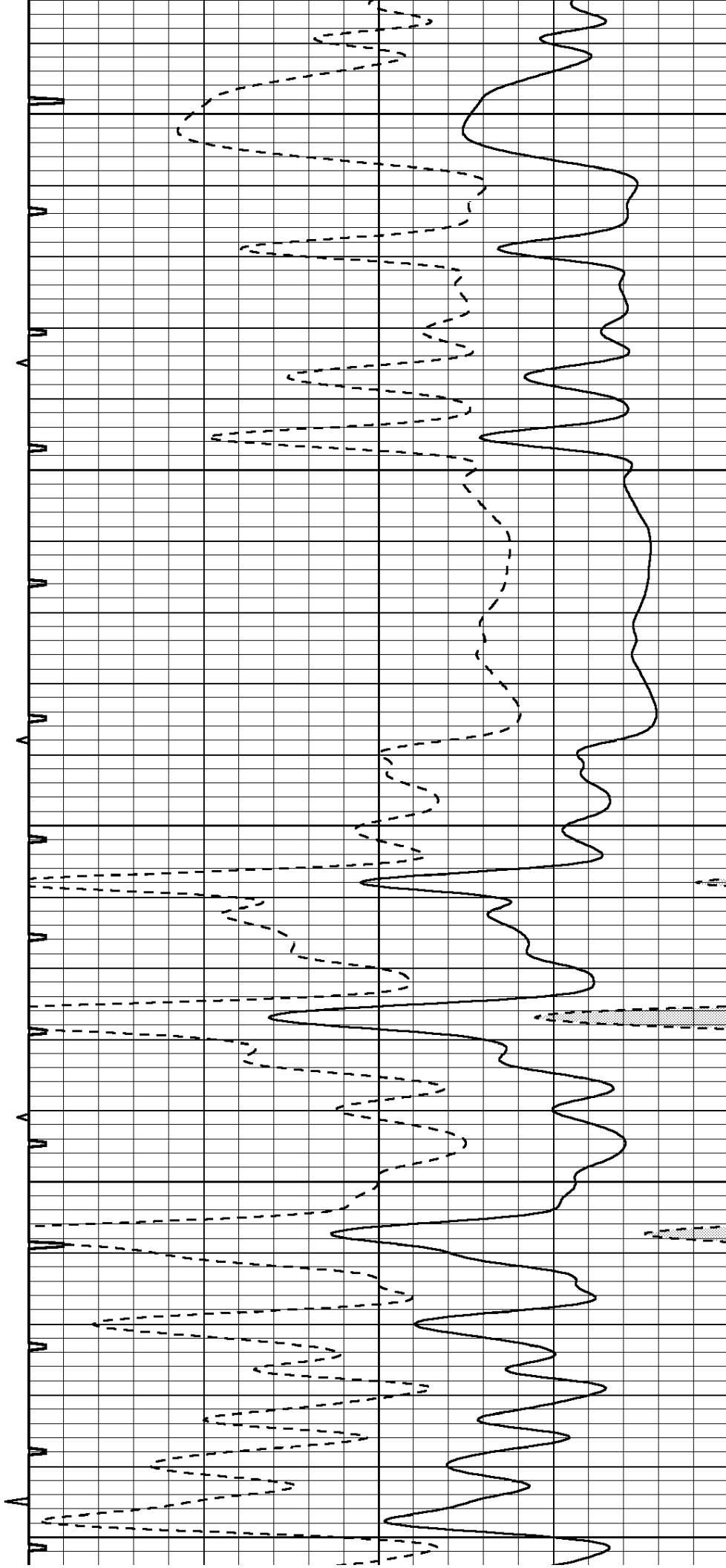
4750

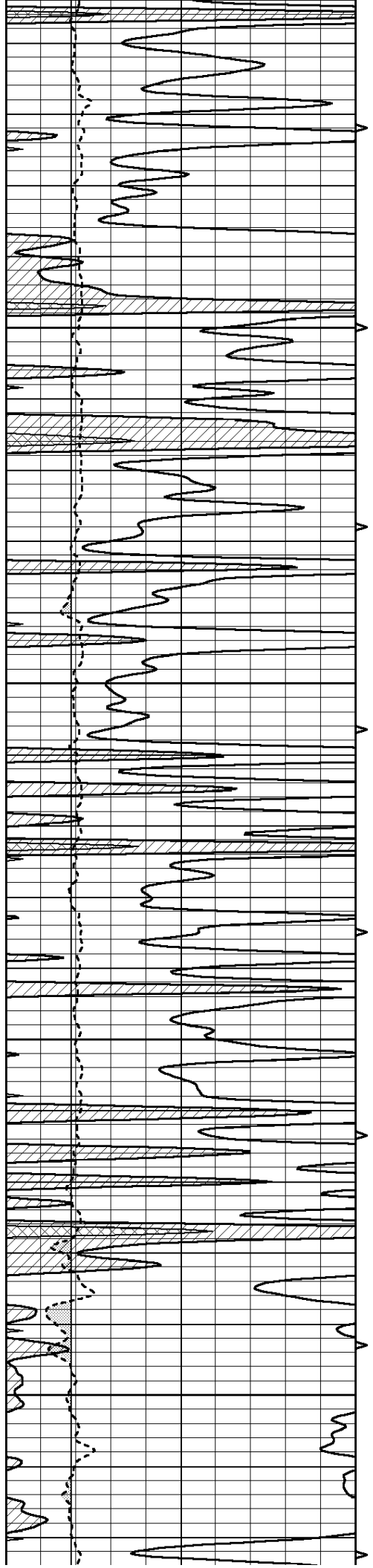
4800

4850

4900

4950



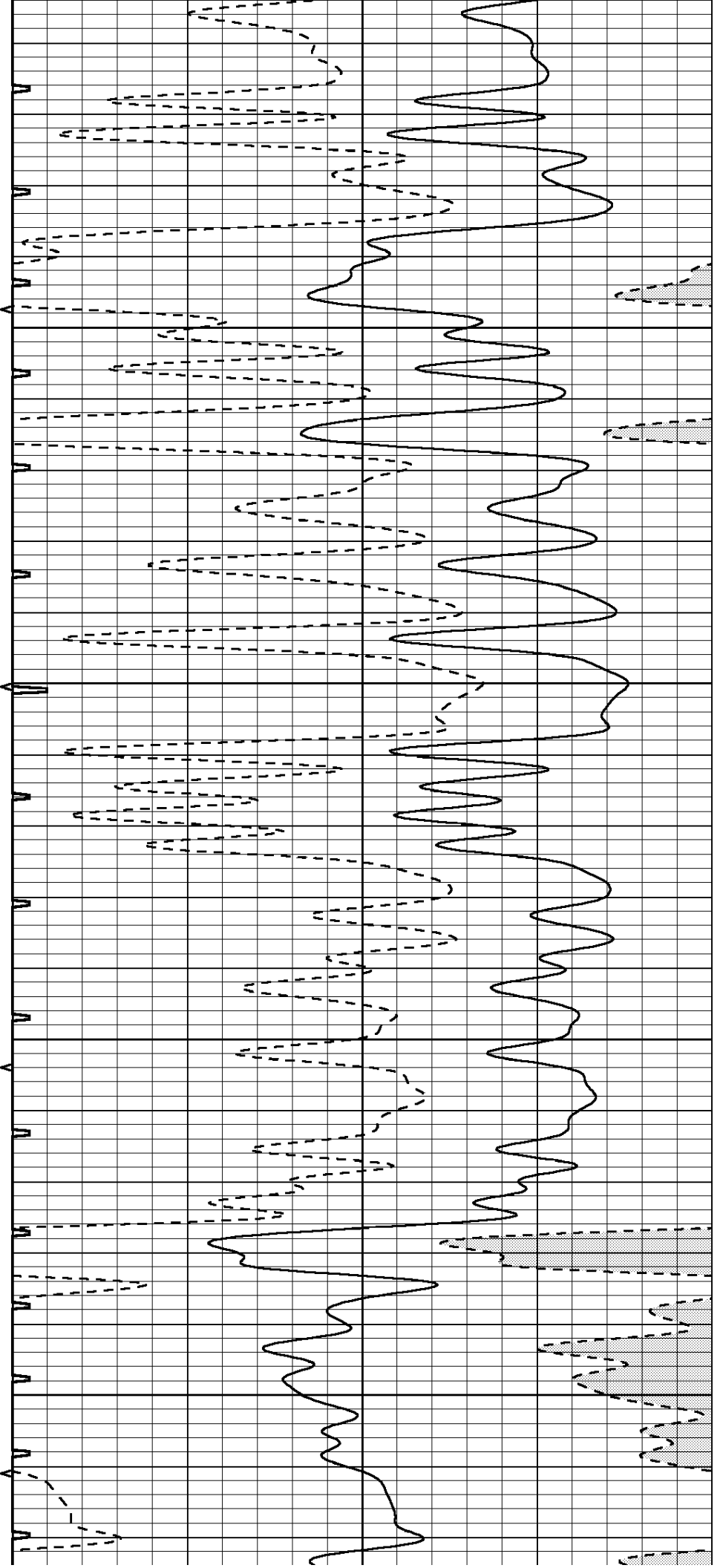


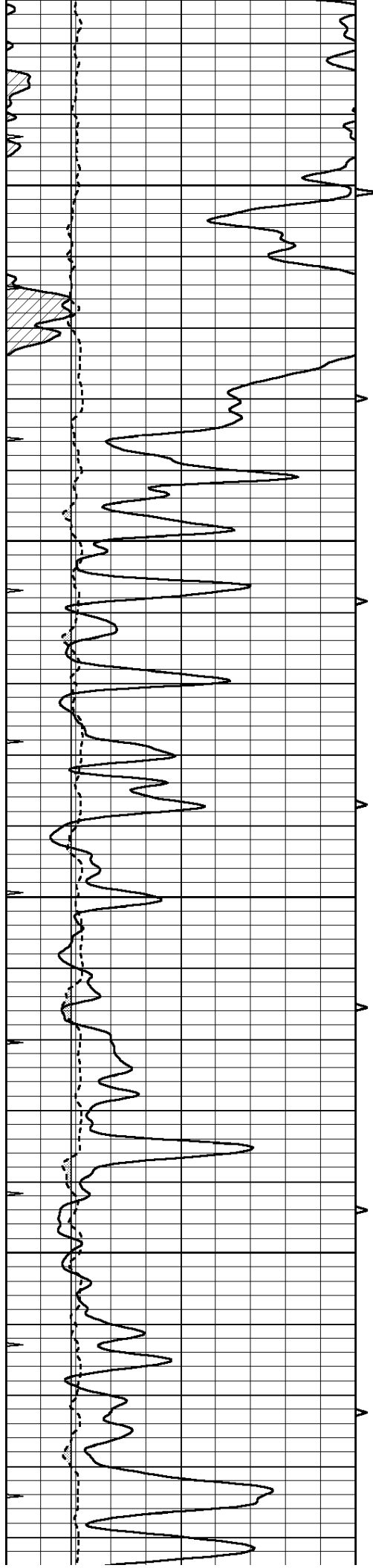
5000

5050

5100

5150



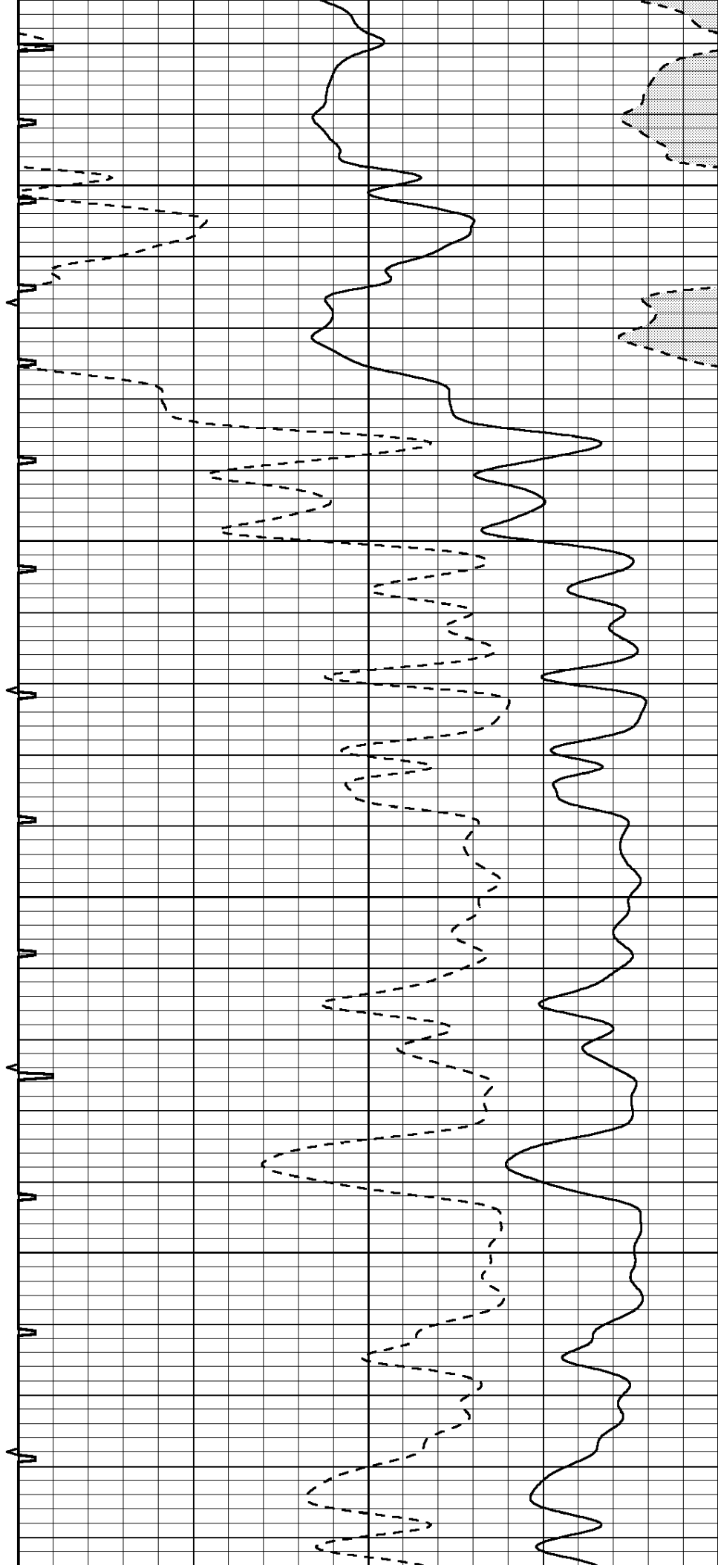


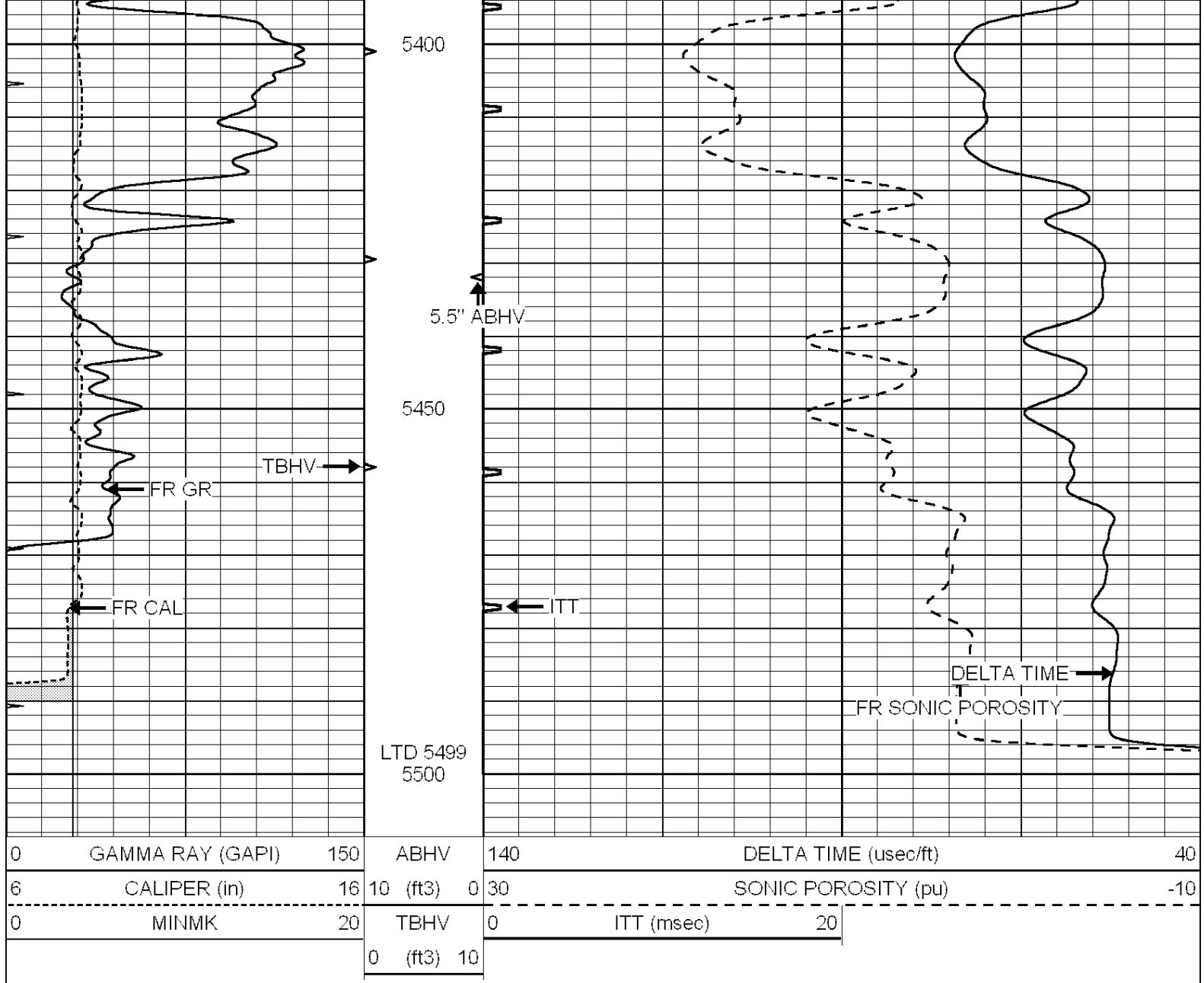
5200

5250

5300

5350





NABORS
**COMPLETION
 & PRODUCTION
 SERVICES CO.**

REPEAT SECTION

Database File: 011813pe.db
 Dataset Pathname: pass6.2
 Presentation Format: slt
 Dataset Creation: Sat Nov 23 08:21:37 2013
 Charted by: Depth in Feet scaled 1:240

