



NABORS

**COMPLETION
& PRODUCTION
SERVICES CO.**

**MICRO
LOG**

MULL DRILLING COMPANY, INC.

GERWECK #1-4

CHEYENNE WELLS

CHEYENNE

COLORADO

Company MULL DRILLING COMPANY, INC.

Well GERWECK #1-4

Field CHEYENNE WELLS

County CHEYENNE State COLORADO

Location: API # : 05-017-07772-00

660' FNL & 660' FWL

SEC 4 TWP 14S RGE 44W

Permanent Datum GROUND LEVEL Elevation 4261

Log Measured From KELLY BUSHING 11' A.G.L.

Drilling Measured From KELLY BUSHING

Elevation

K.B. 4272
D.F. 4270
G.L. 4261

Date 11/23/13

Run Number TWO

Depth Driller 5500

Depth Logger 5499

Bottom Logged Interval 5477

Top Log Interval 4000

Casing Driller 8 5/8" @ 1733'

Casing Logger 1728

Bit Size 7 7/8"

Type Fluid in Hole CHEMICAL MUD

Density / Viscosity 9.2/64

pH / Fluid Loss 9.07 / 2

Source of Sample FLOWLINE

Rim @ Meas. Temp .950 @ 55F

Rmf @ Meas. Temp .713 @ 55F

Rmc @ Meas. Temp 1.14 @ 55F

Source of Rmf / Rmc MEASUREMENT

Rim @ BHT .402 @ 130F

Time Circulation Stopped 5.5 HOURS

Time Logger on Bottom 3:45 A.M.

Maximum Recorded Temperature 130F

Equipment Number 4854

Location HAYS, KANSAS

Recorded By JEFF LUEBBERS

Witnessed By PHIL ASKEY

<<< Fold Here >>>

All interpretations are opinions based on inferences from electrical or other measurements and we cannot and do not guarantee the accuracy or correctness of any interpretation, and we shall not, except in the case of gross or willful negligence on our part, be liable or responsible for any loss, costs, damages, or expenses incurred or sustained by anyone resulting from any interpretation made by any of our officers, agents or employees. These interpretations are also subject to our general terms and conditions set out in our current Price Schedule.

Comments

THANK YOU FOR USING "NABORS" HAYS, KANSAS (785) 628 6395
DIRECTIONS
CHEYENNE WELLS, CO. 3N. ON HWY 385 TO "RD. U", 1/8 E., S. INTO



NABORS

**COMPLETION
& PRODUCTION**

MAIN SECTION

Database File:

011813pe.db

Dataset Pathname:

pass7.3

Presentation Format:

micro

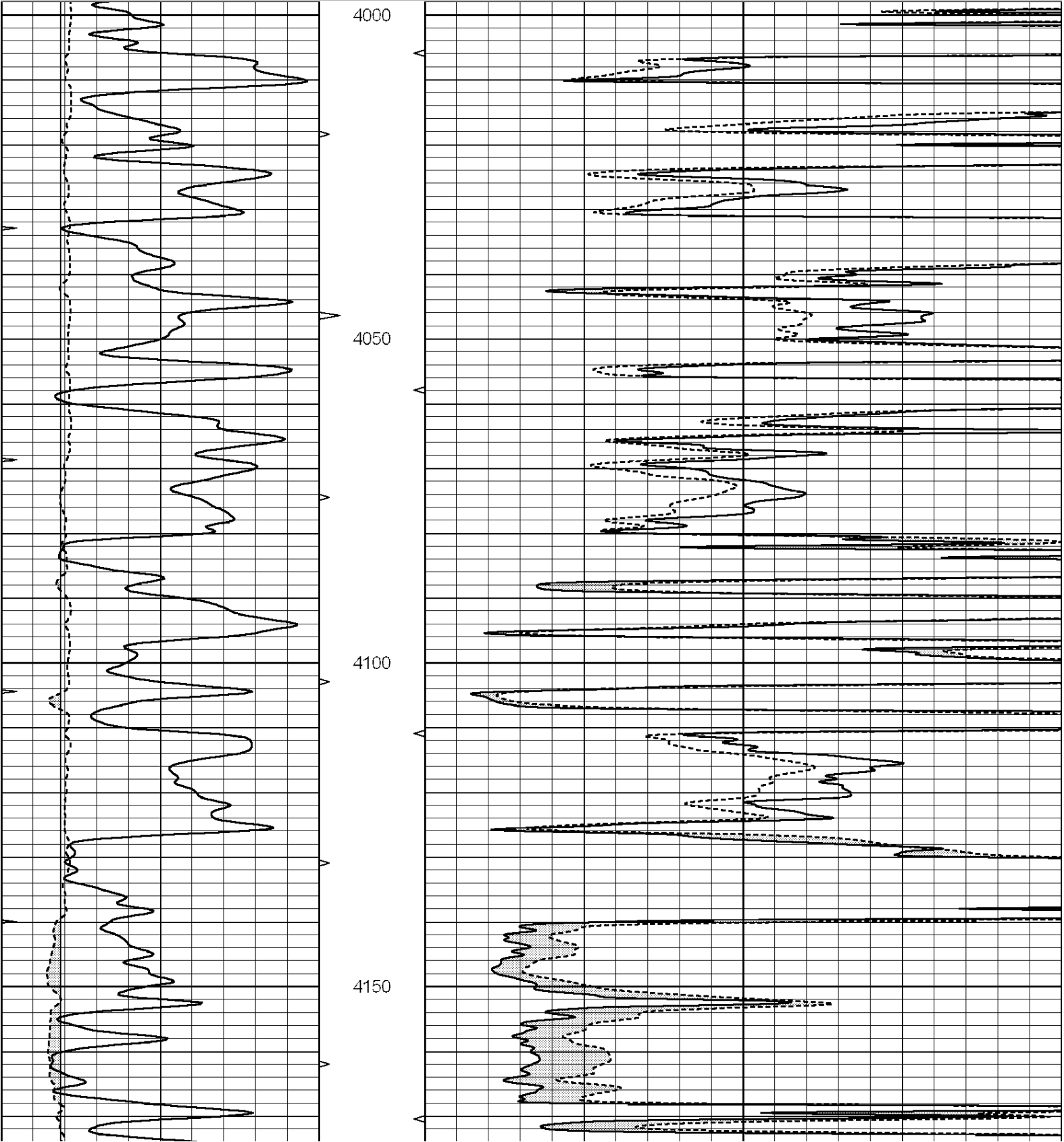
Dataset Creation:

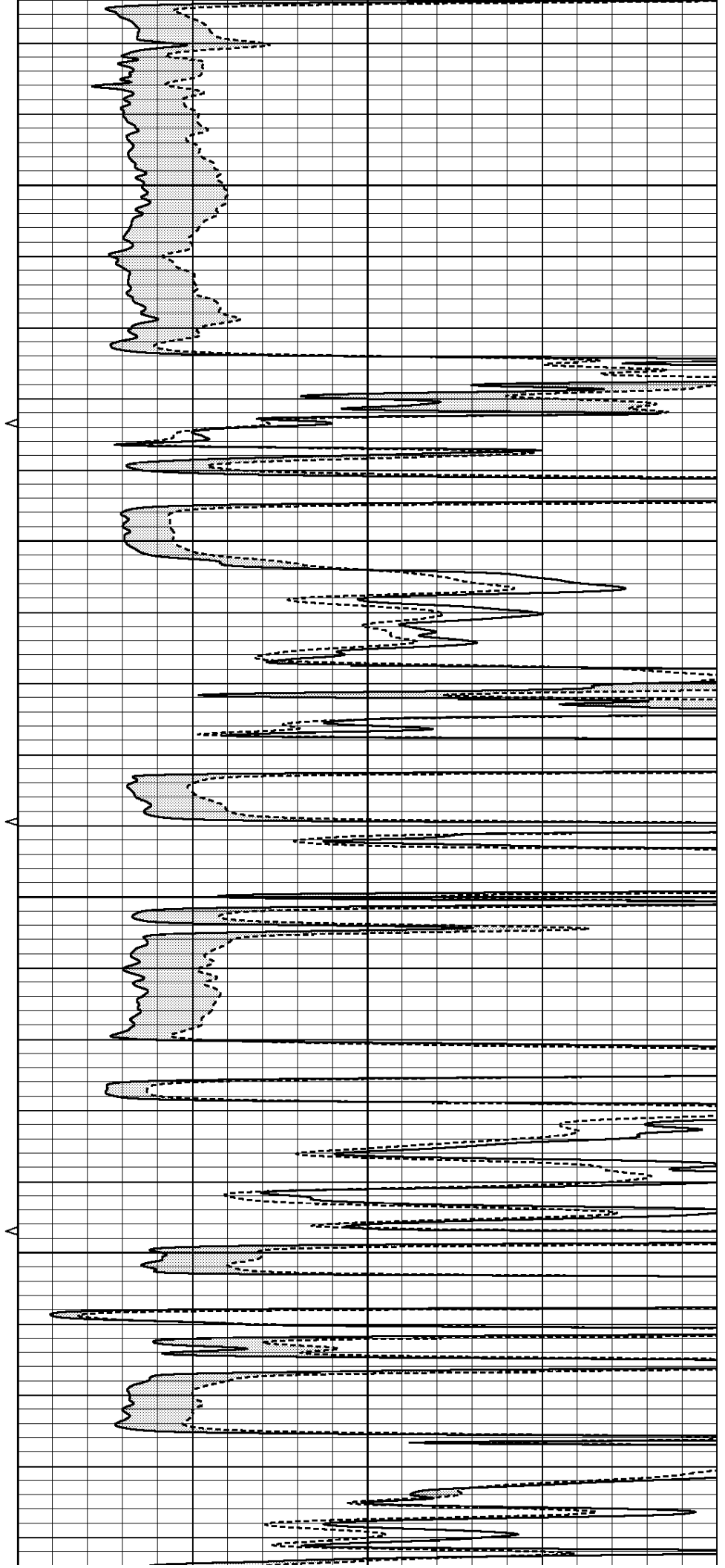
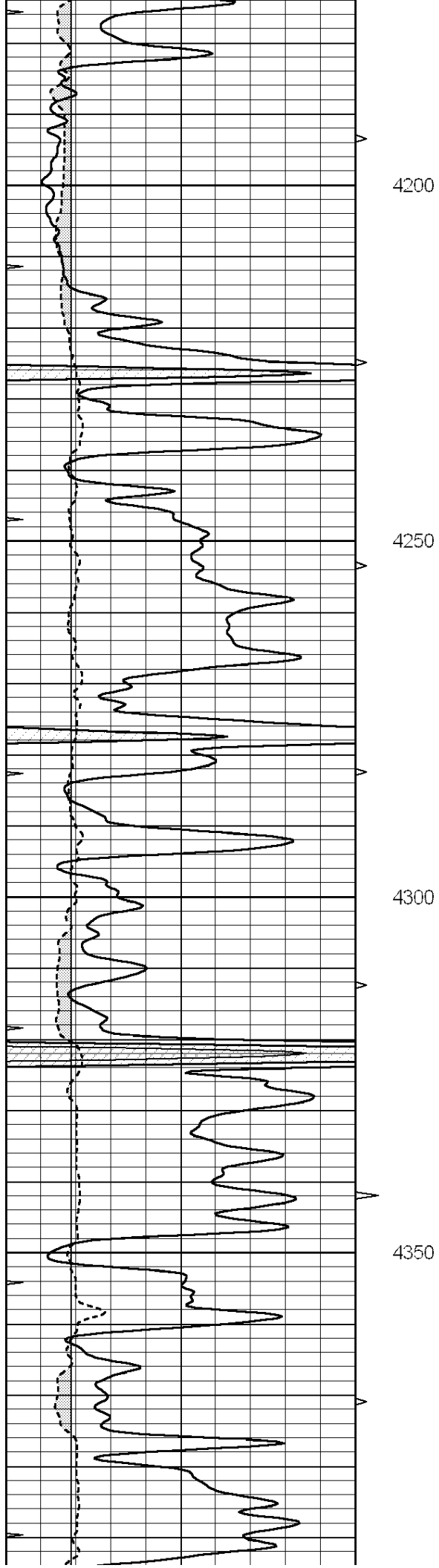
Sat Nov 23 08:31:11 2013

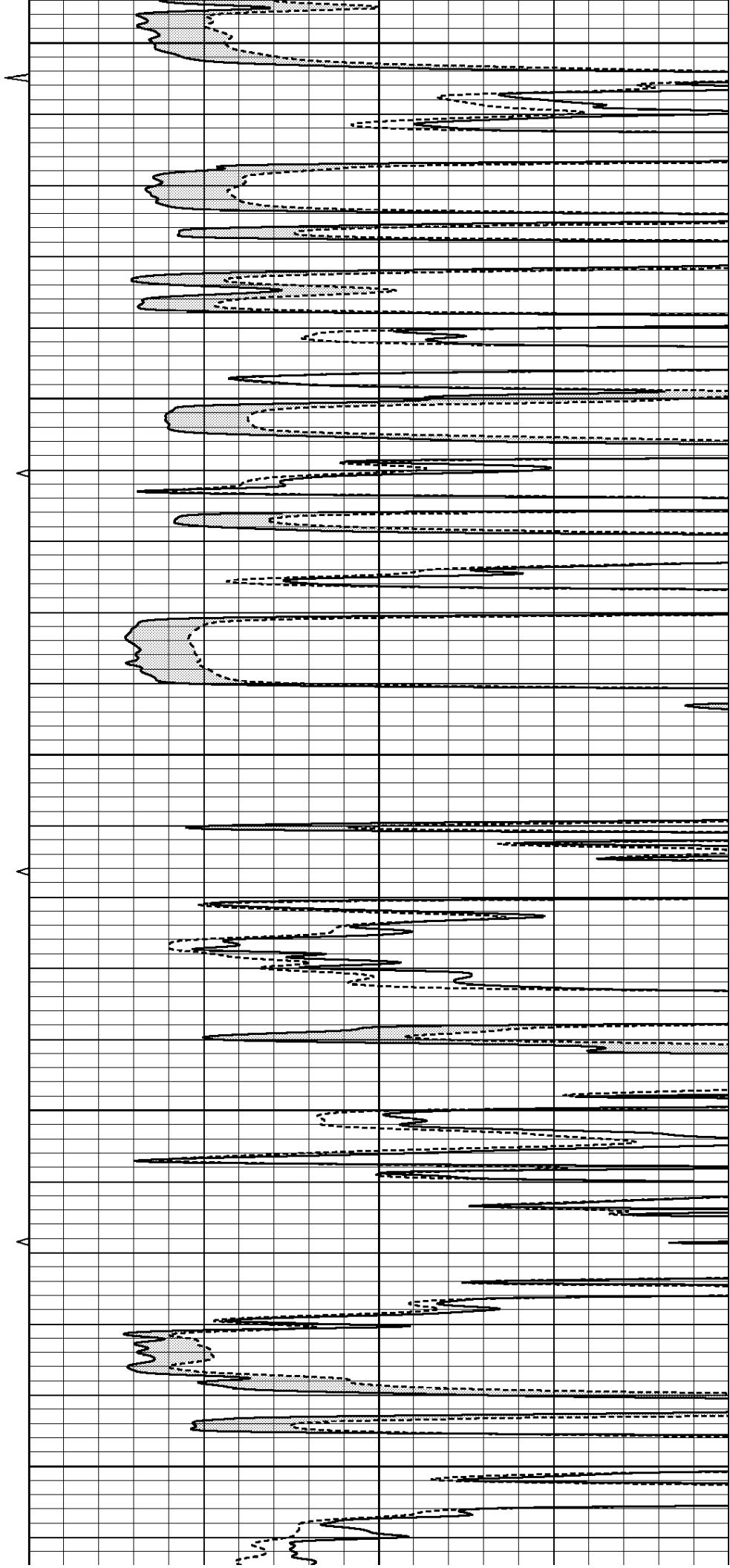
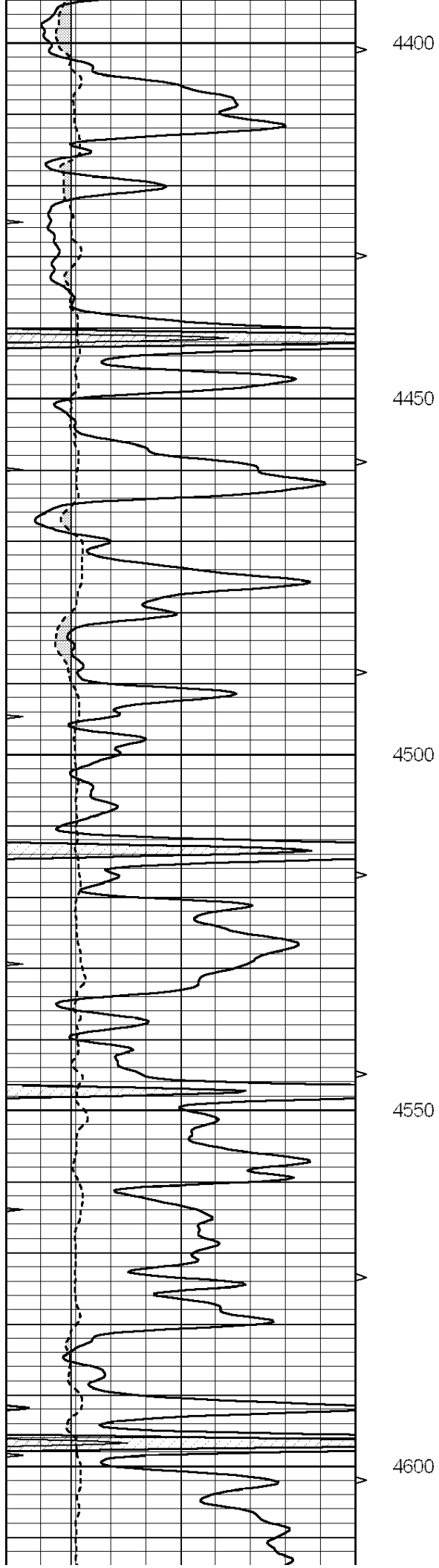
Charted by:

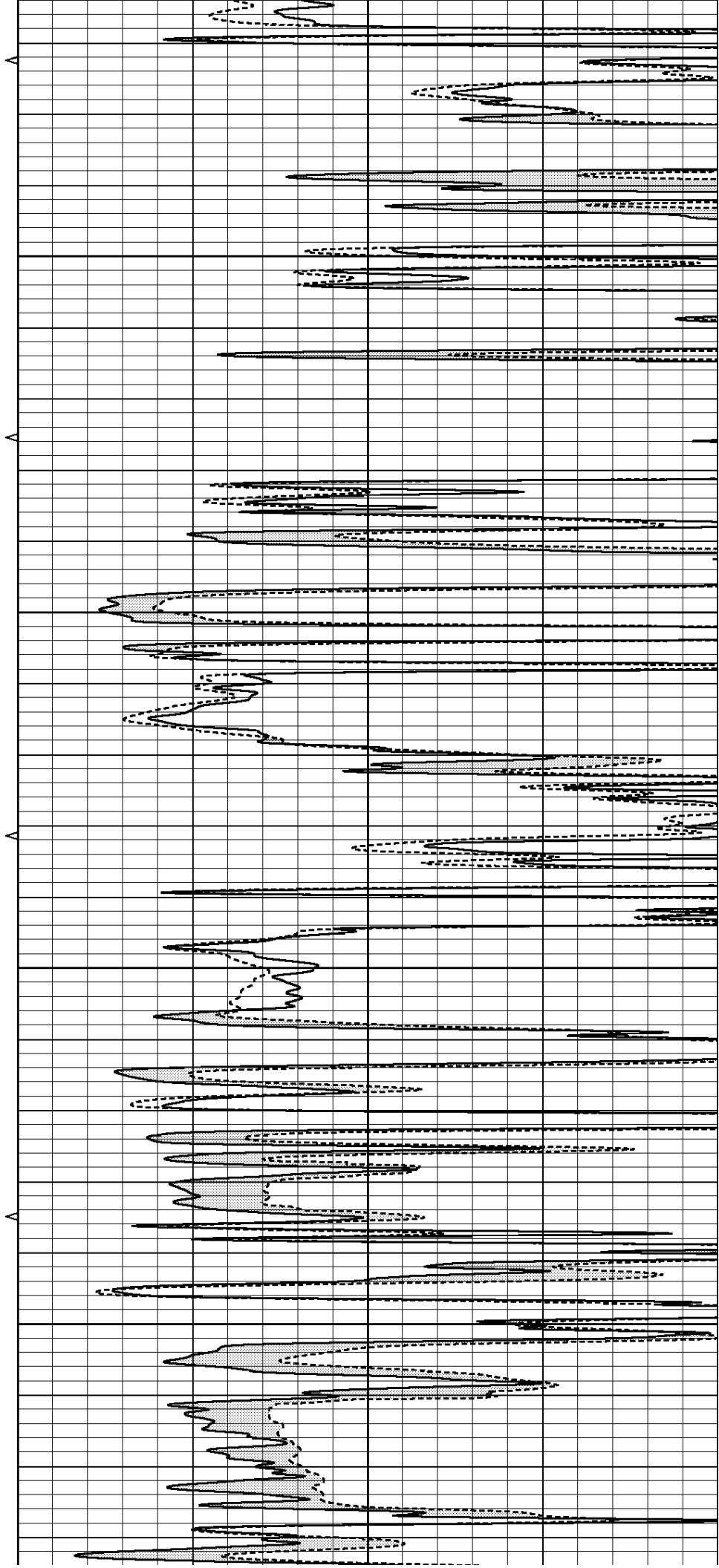
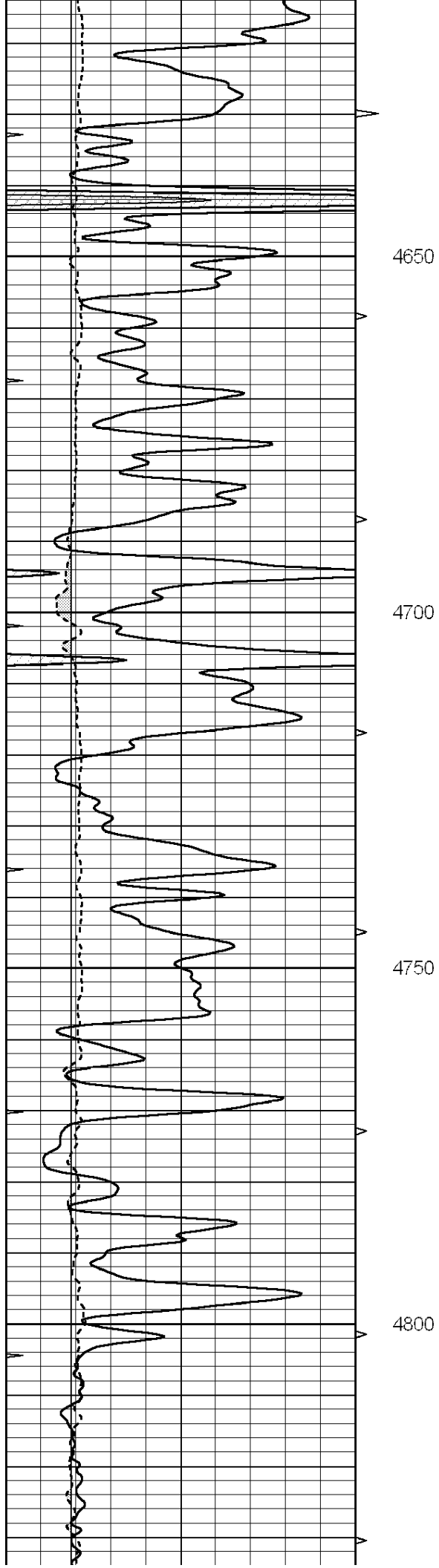
Depth in Feet scaled 1:240

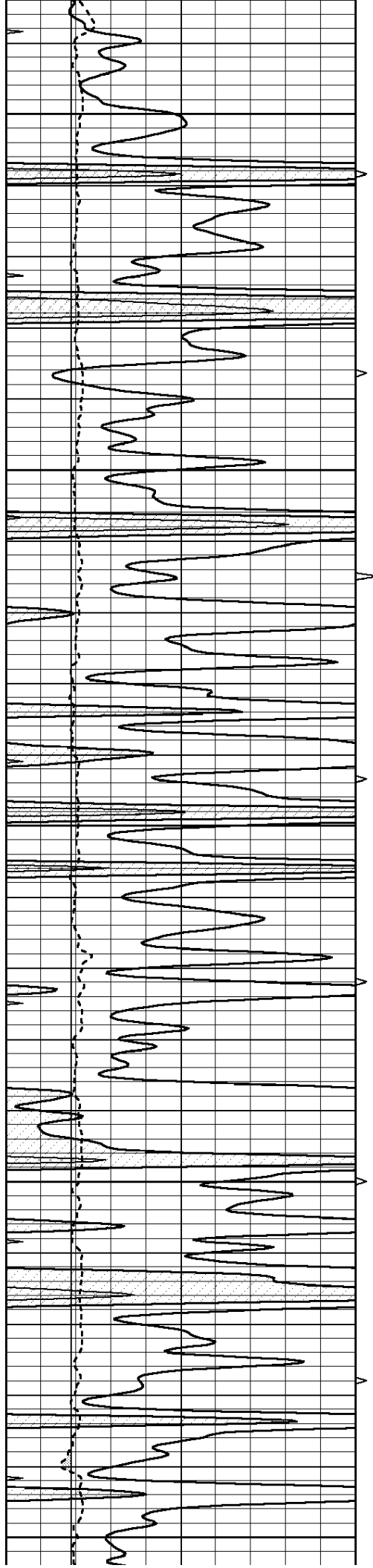
0	GAMMA RAY (GAPI)	150	ABHV	0	MEL1.5 (Ohm-m)	40
6	CALIPER (in)	16	10 (ft3)	0 0	MEL2.0 (Ohm-m)	40
0	MINMK	20	TBHV			
			0 (ft3)	10		











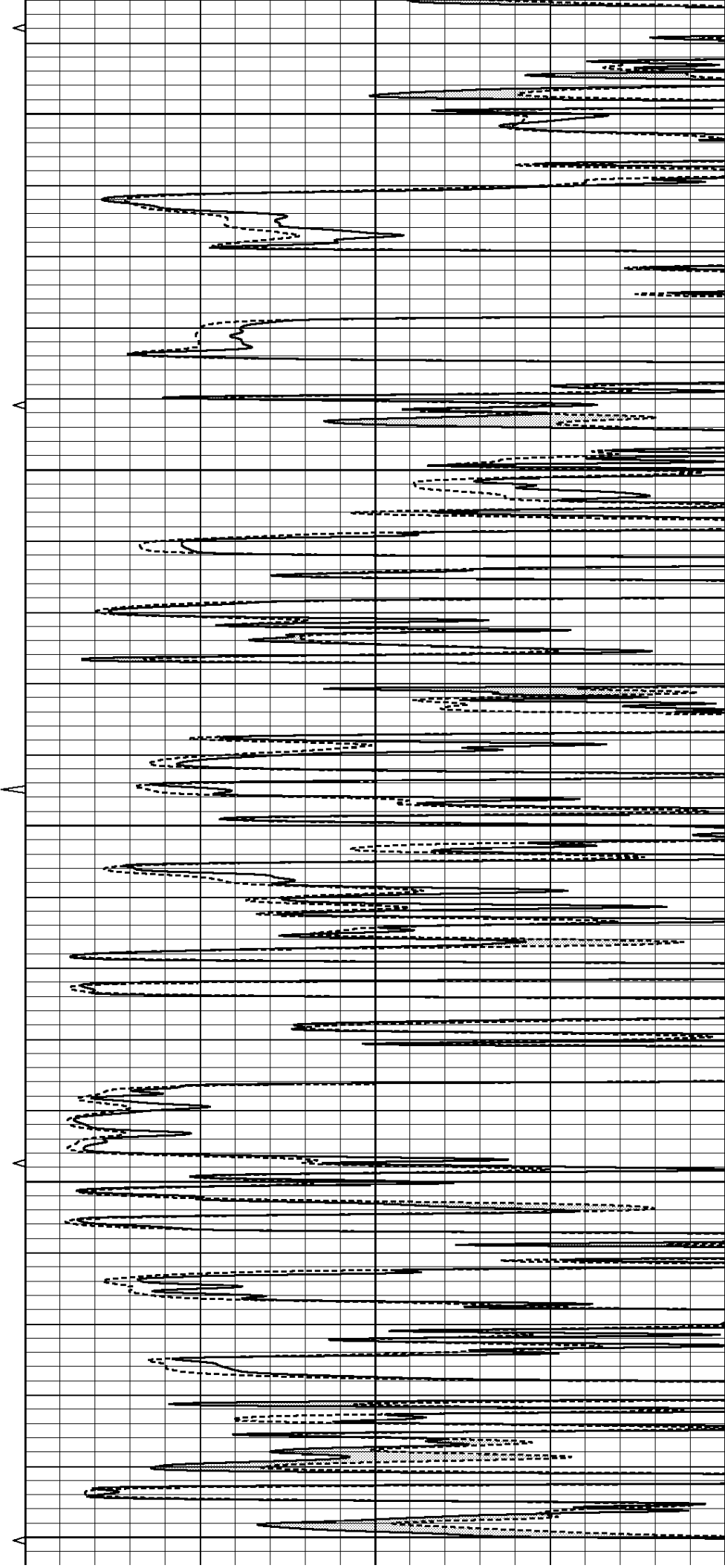
4850

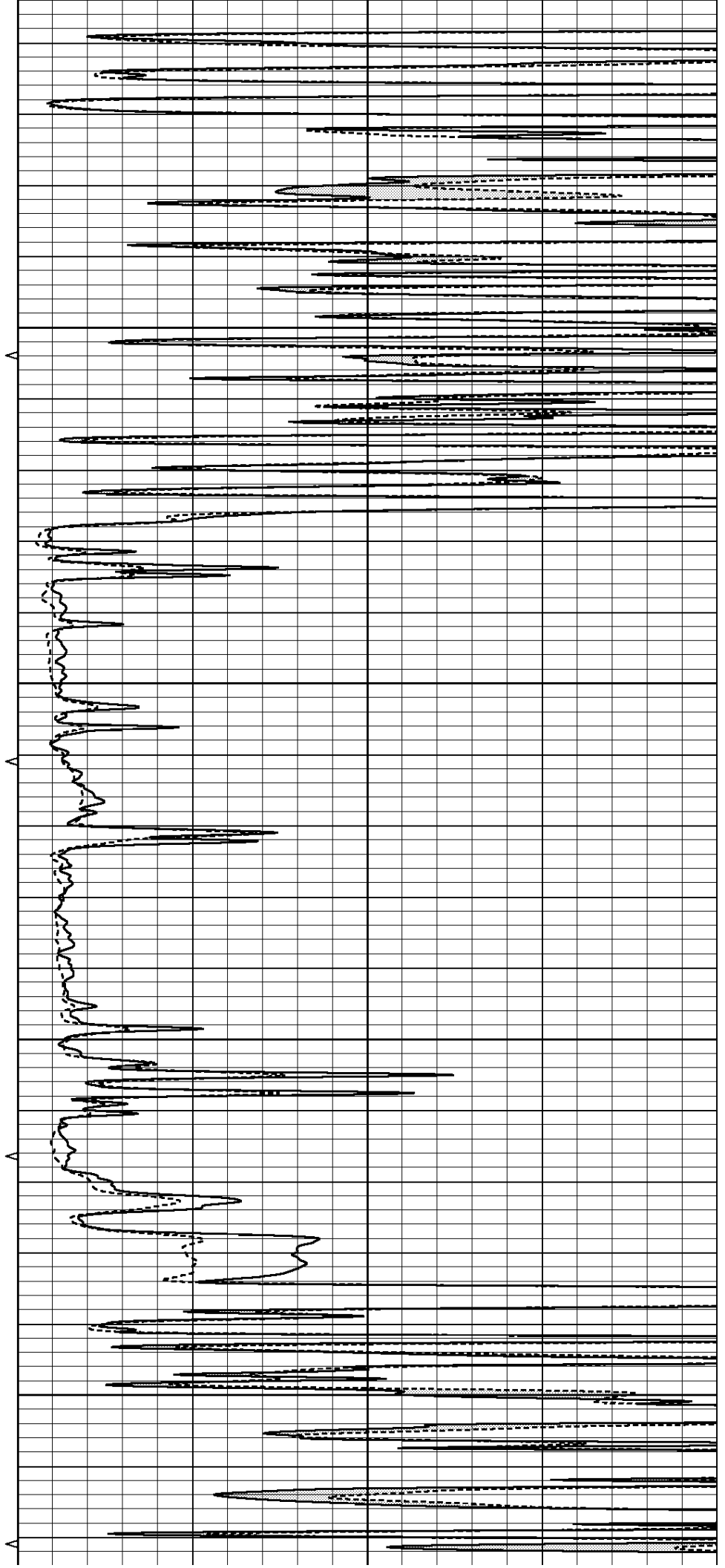
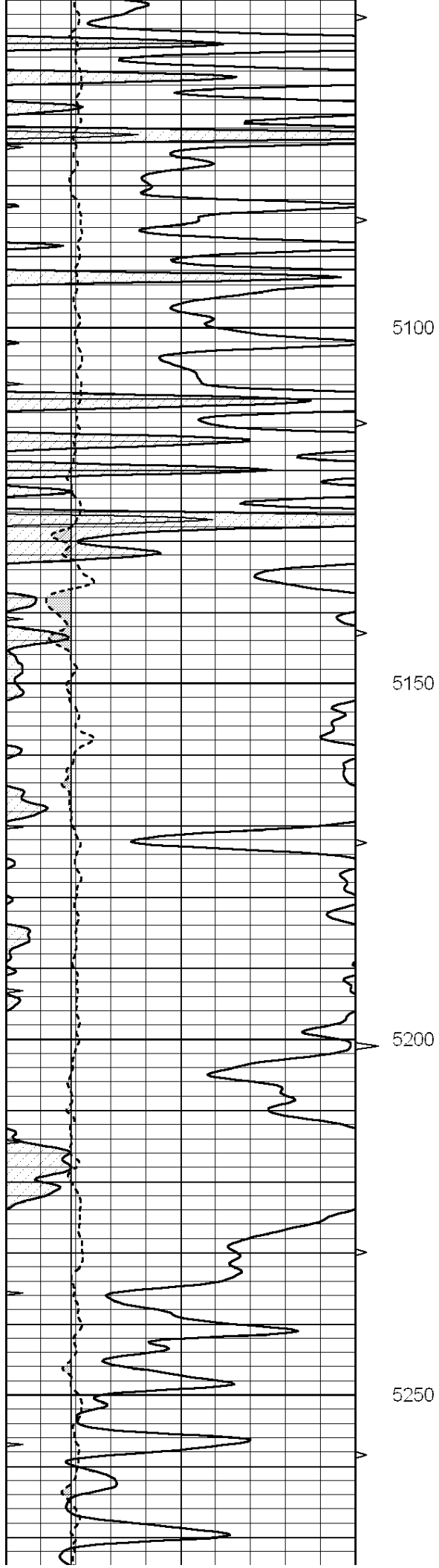
4900

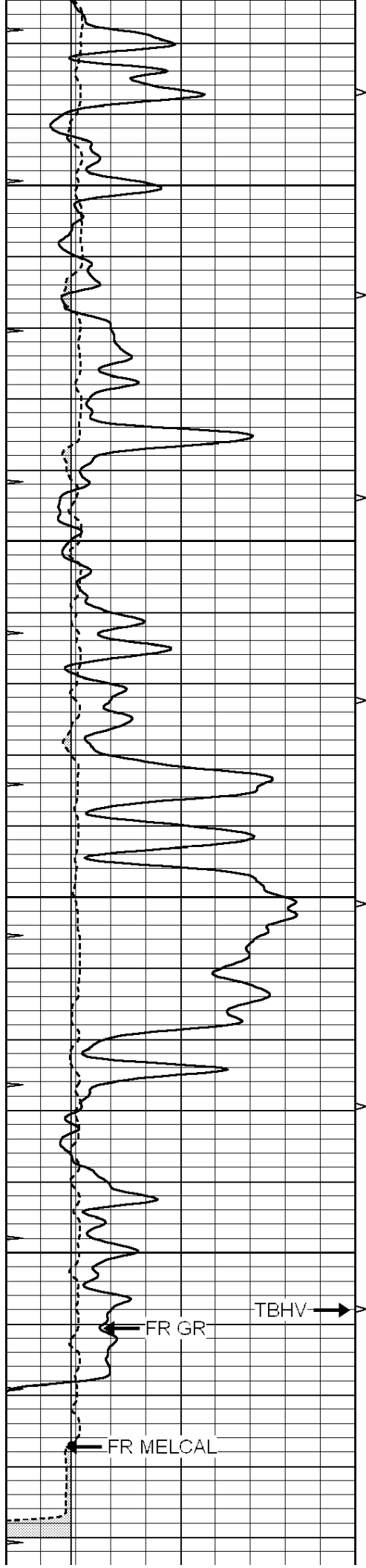
4950

5000

5050







5300

5350

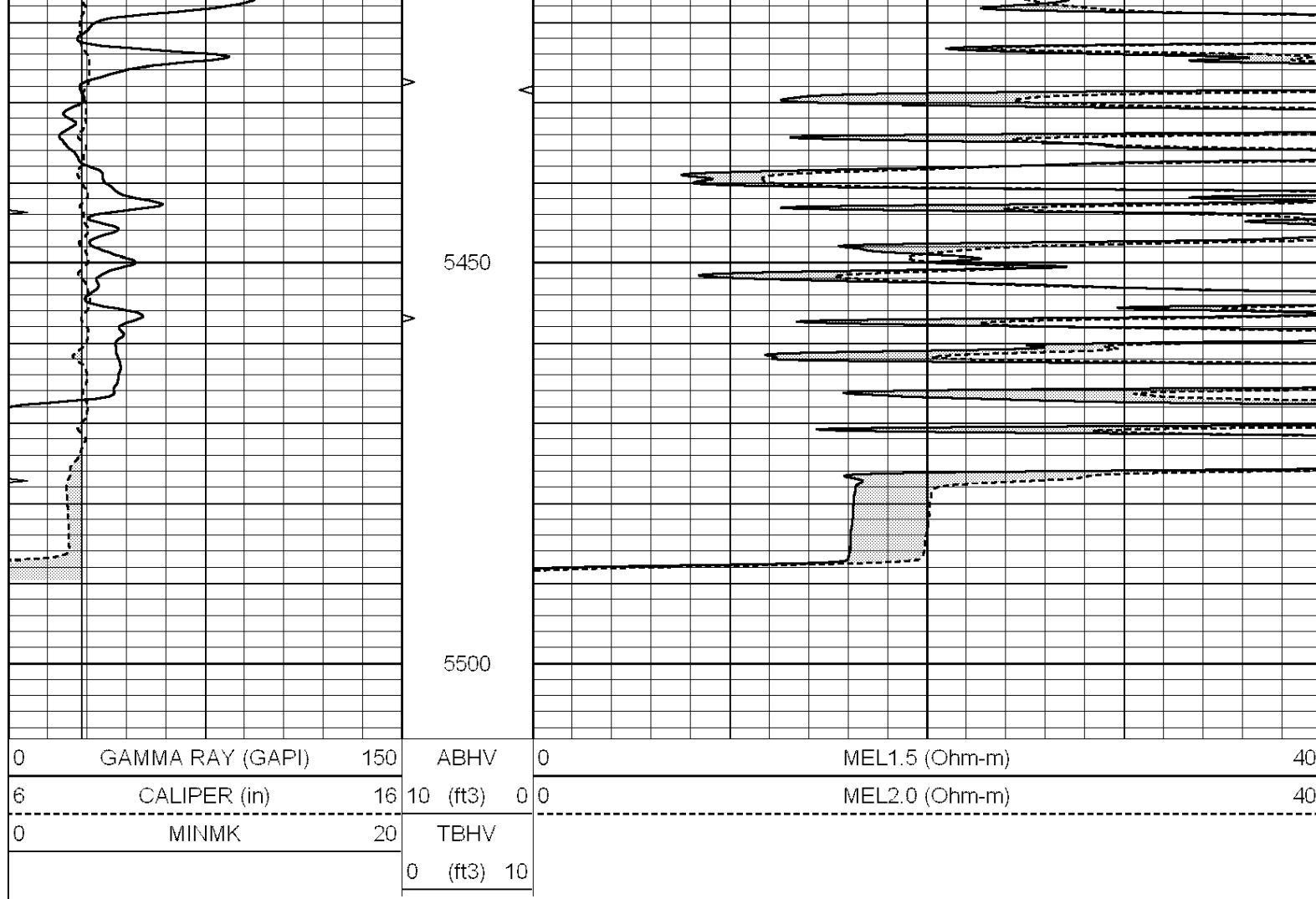
5400

5.5" ABHV

5450

MEL1.5

MEL2.0



Calibration Report			
Database File:	011813pe.db		
Dataset Pathname:	pass7.3		
Dataset Creation:	Sat Nov 23 08:31:11 2013		
MICRO Calibration Report			
Serial Number:	MICRO5		
Tool Model:	PROBE		
Performed:	Tue Nov 19 08:57:12 2013		
Caliper Calibration:	Gain=3.399	Offset=-5.556	
	Low Cal	High Cal	
References	8.400	15.000	
Readings	4.106	6.048	
1.5" Calibration:	Gain=42.000	Offset=-1.000	
	Low Cal	High Cal	
References	0.000	20.000	
Readings	0.015	1.005	
2" Calibration:	Gain=54.000	Offset=-1.300	
	Low Cal	High Cal	
References	0.000	20.000	
Readings	0.009	0.910	
Gamma Ray Calibration Report			
Serial Number:	GR3		

Serial Number:
Tool Model: OPEN
Performed: Tue Nov 19 09:11:23 2013

Calibrator Value: 200.0 GAPI

Background Reading: 3.0 cps
Calibrator Reading: 186.0 cps

Sensitivity: 1.2500 GAPI/cps