



Cathedral Energy Services

135481

5":100' - MD

10/28/2013 6:09:52 AM

Oper. Company: Encana Oil & Gas
Country: US
State / Province: Colorado
County / Parish: WELD
Started: 10/15/2013 06:00 PM

API/UWI: 05-123-37231-00
Field: DJ Basin
Well: DEVORE 1A-34H
Rig: Patterson 272
Ended: 10/25/2013 09:00 AM

Personnel

Day Hand: Richie Moulton
Night Hand: Corey Horkan
Comp. Emp: Cathedral Energy Service

Location

Latitude: 40.188220
Longitude: -104.758710
Elev. GL: 4962
Elev. DF: 4992
Elev. KB: 30

Hole Data

Size	From	To
12.25	0	1047
8.75	1047	7894
6.125	7894	11977

Casing Data

Size	From	To
9 5/8	0	1035
7	0	7881
4 1/2	0	11963

Bit Sizes

Size	From	To
12.25	0	1047
8.75	1047	7894
6.125	7894	11977

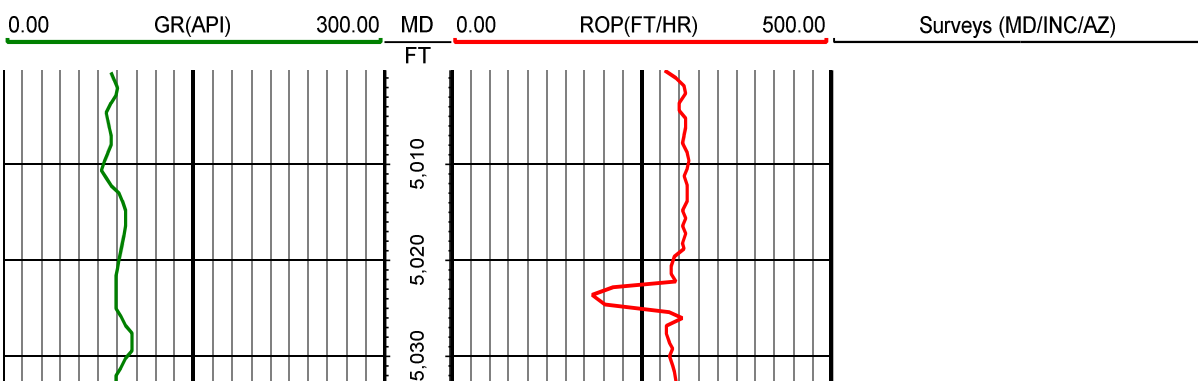
Mud Data

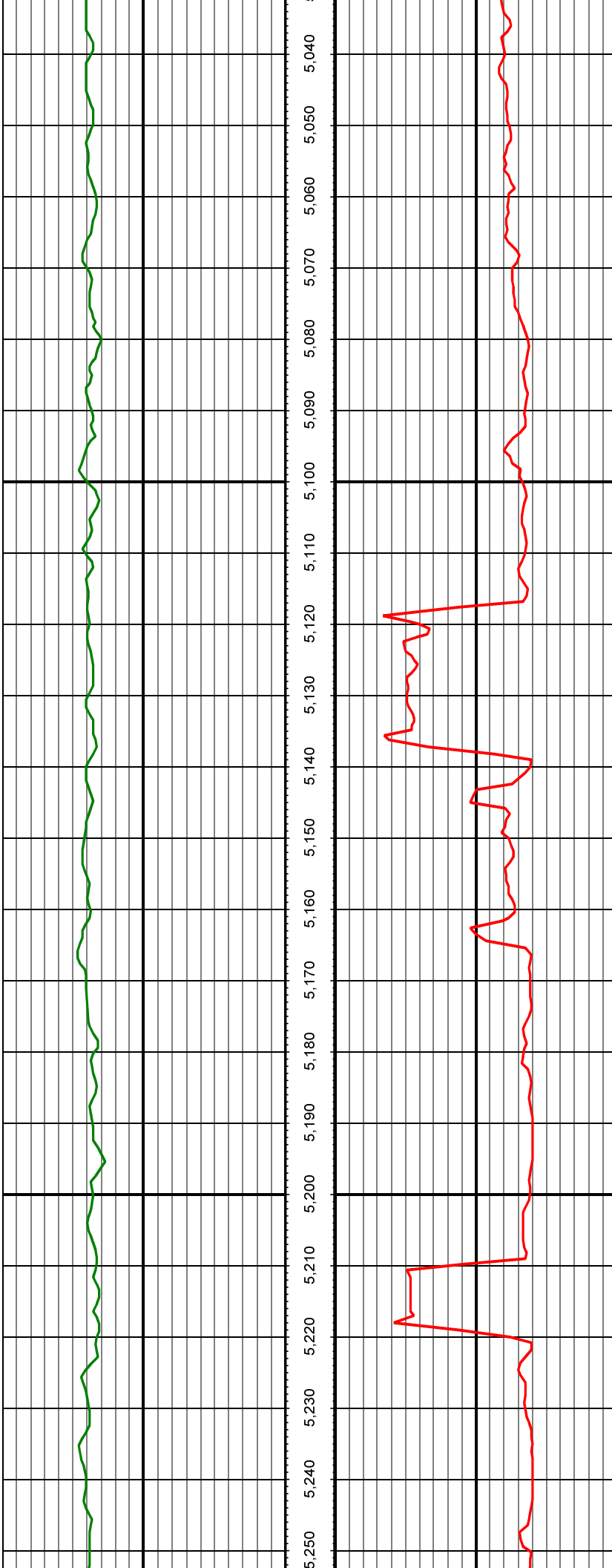
Type	Weight	Density	Viscosity	Rm	Rmf	Rmc	From	To
------	--------	---------	-----------	----	-----	-----	------	----

Tool Run Data

Serial Number	Gamma Offset	Resist. Offset	Start Time	Start Depth	End Time	End Depth
1529	40.6	0	10/15/2013 10:00:24 PM	0	10/16/2013 8:00:24 AM	1047
1529	40.6	0	10/17/2013 10:00:13 AM	1047	10/20/2013 9:00:13 AM	7894
1218	38.16	0	10/22/2013 8:30:34 AM	7894	10/25/2013 11:30:34 PM	11977

All interpretations are opinions based on inferences from electrical or other measurements and we cannot and do not guarantee the accuracy or correctness of any interpretation, and we shall not except in the case of gross or willful negligence on our part, be liable or responsible for any loss, cost damages or expenses incurred or sustained by anyone resulting from an interpretation made by any of our officers, agents, or employees.





MD: 5067.00 INC: 8.90 AZ: 284.20

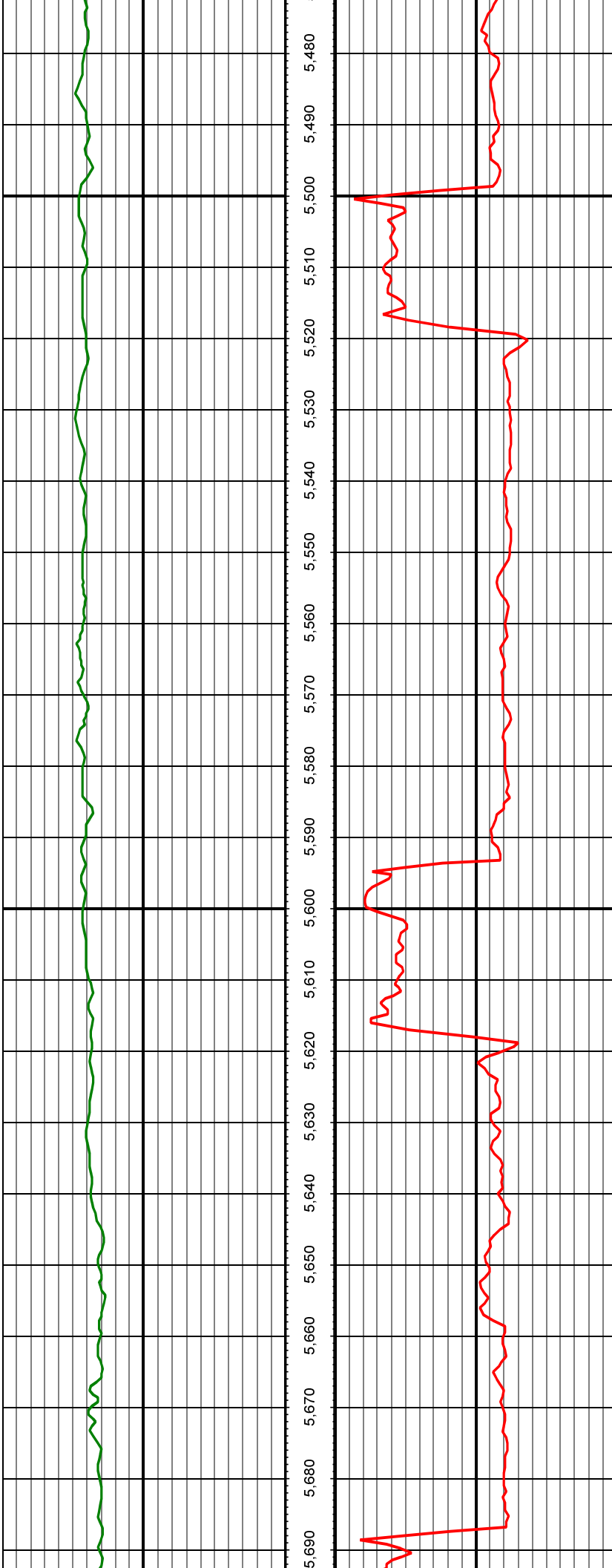
MD: 5161.00 INC: 10.80 AZ: 279.50



MD: 5256.00 INC: 9.90 AZ: 276.10

MD: 5350.00 INC: 10.60 AZ: 277.80

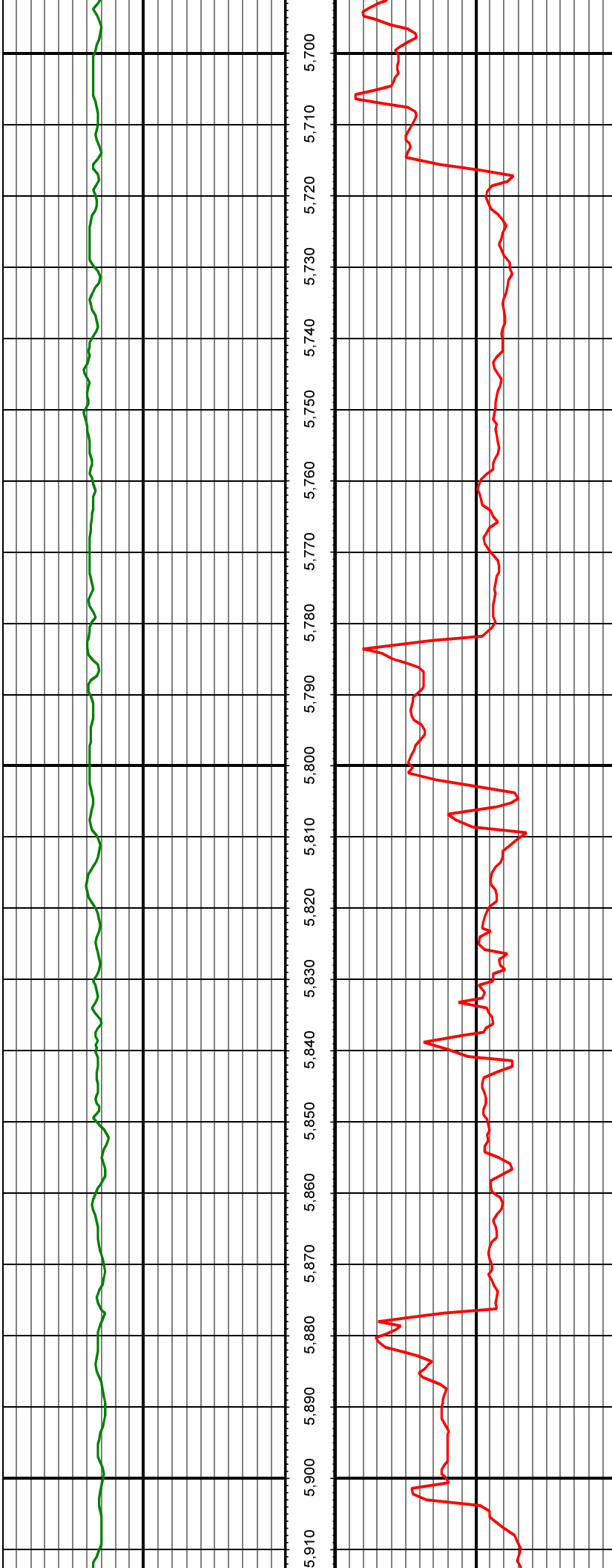
MD: 5444.00 INC: 8.40 AZ: 275.50



5,480 5,490 5,500 5,510 5,520 5,530 5,540 5,550 5,560 5,570 5,580 5,590 5,600 5,610 5,620 5,630 5,640 5,650 5,660 5,670 5,680 5,690

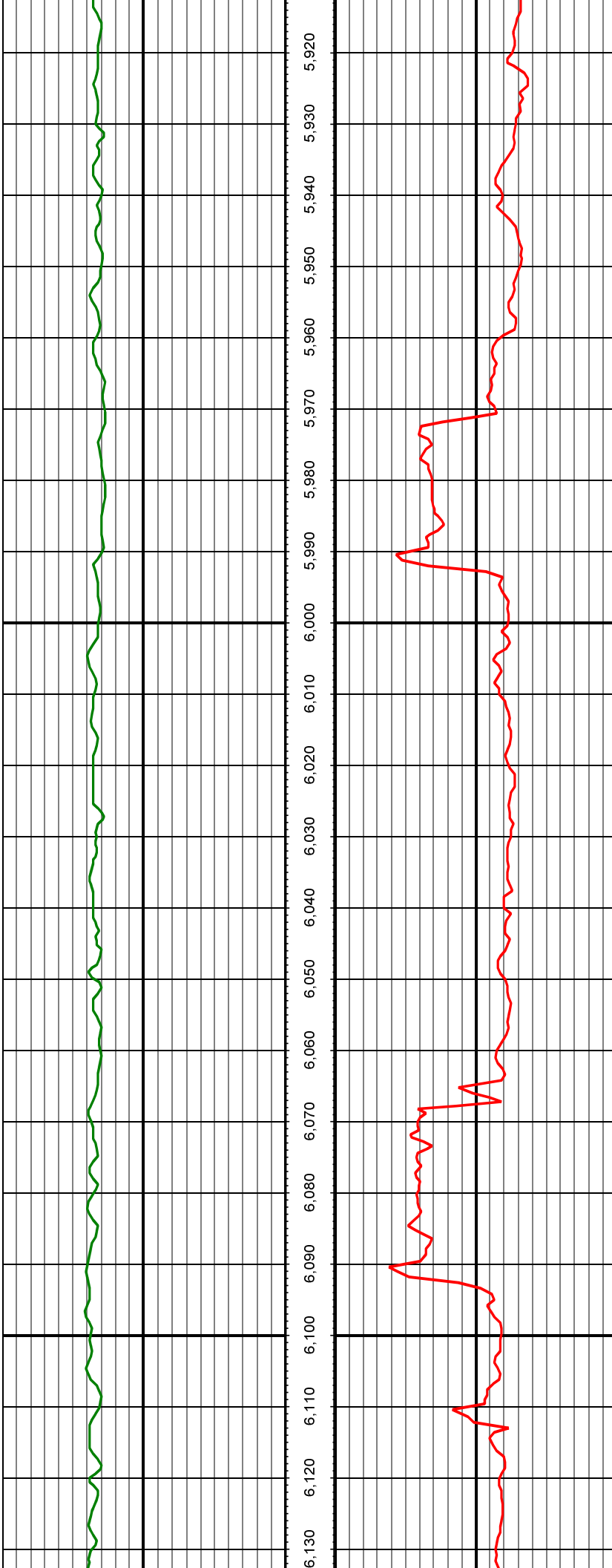
MD: 5539.00 INC: 9.70 AZ: 280.40

MD: 5633.00 INC: 10.40 AZ: 276.40



MD: 5728.00 INC: 9.80 AZ: 272.00

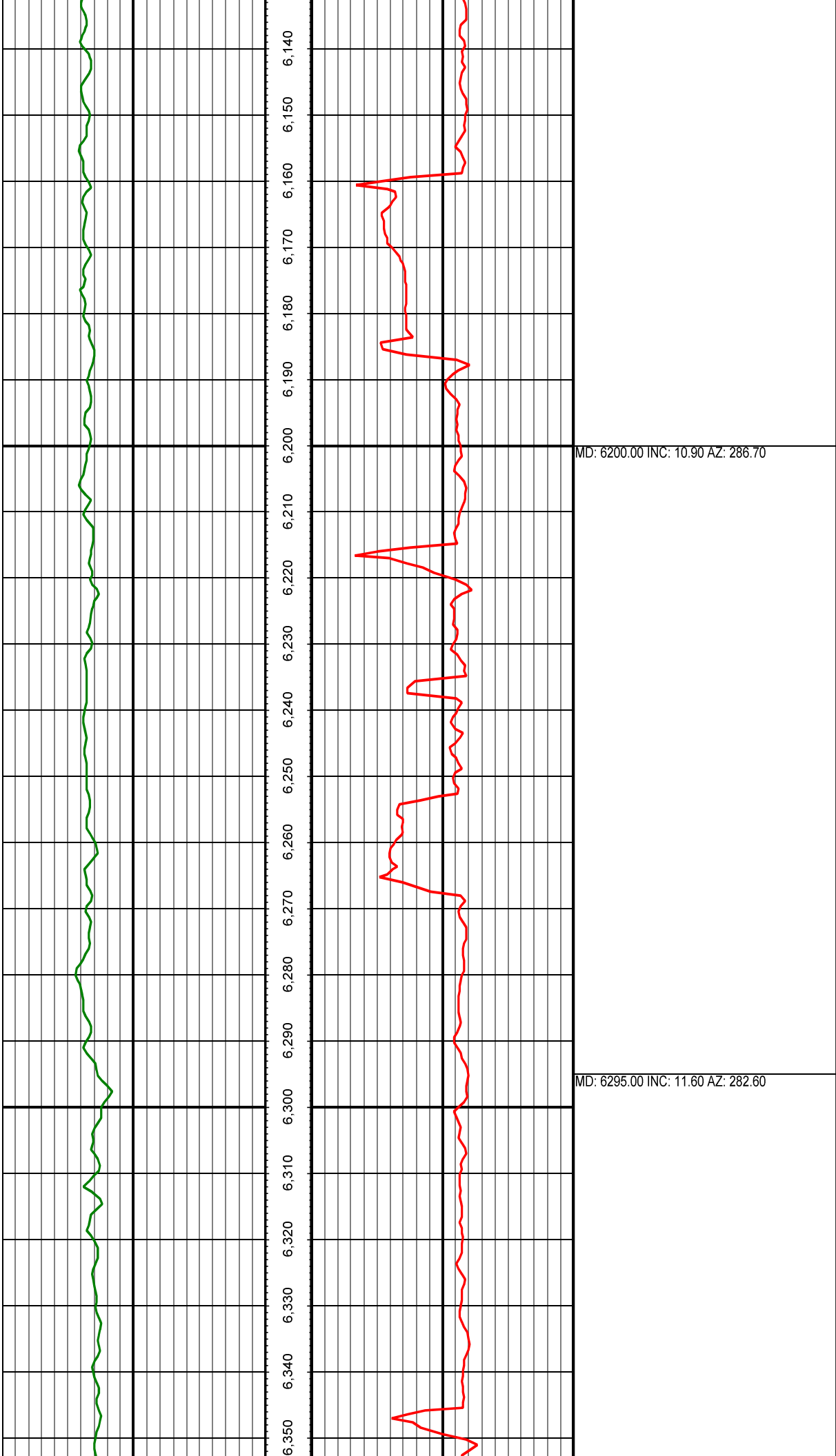
MD: 5822.00 INC: 9.70 AZ: 280.30

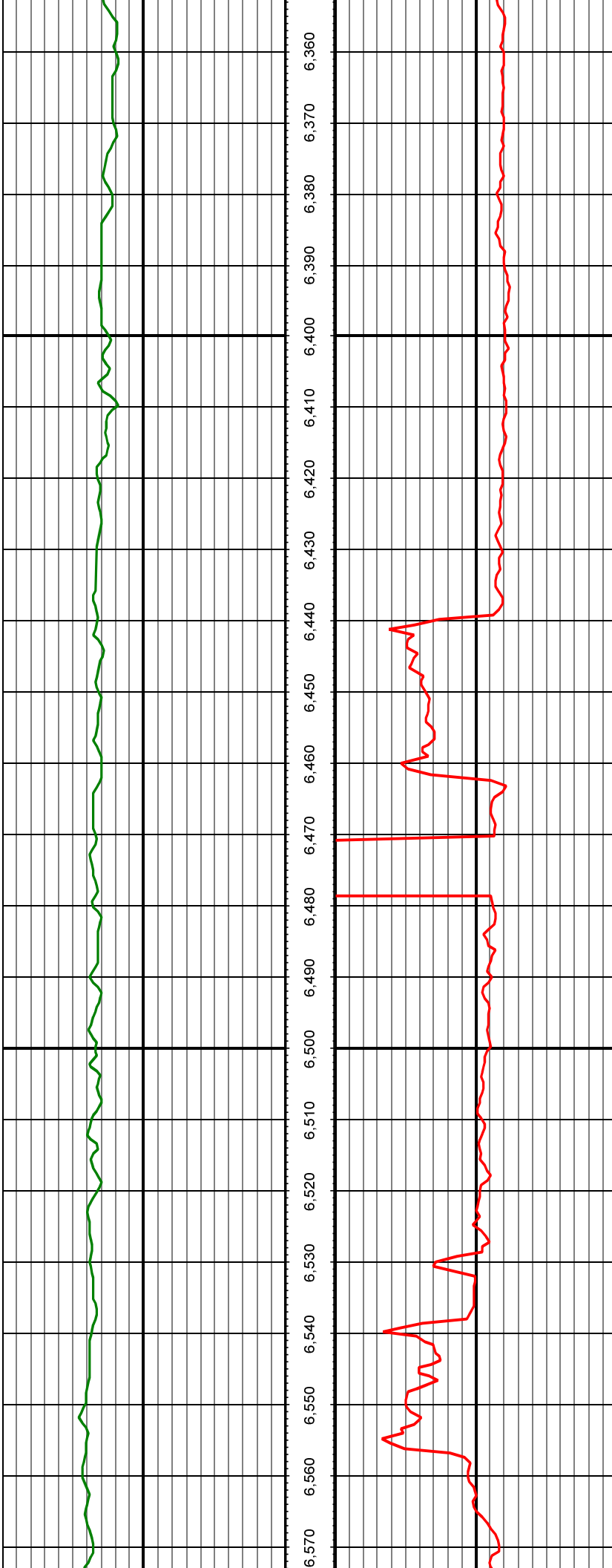


MD: 5916.00 INC: 9.30 AZ: 279.10

MD: 6011.00 INC: 9.20 AZ: 274.70

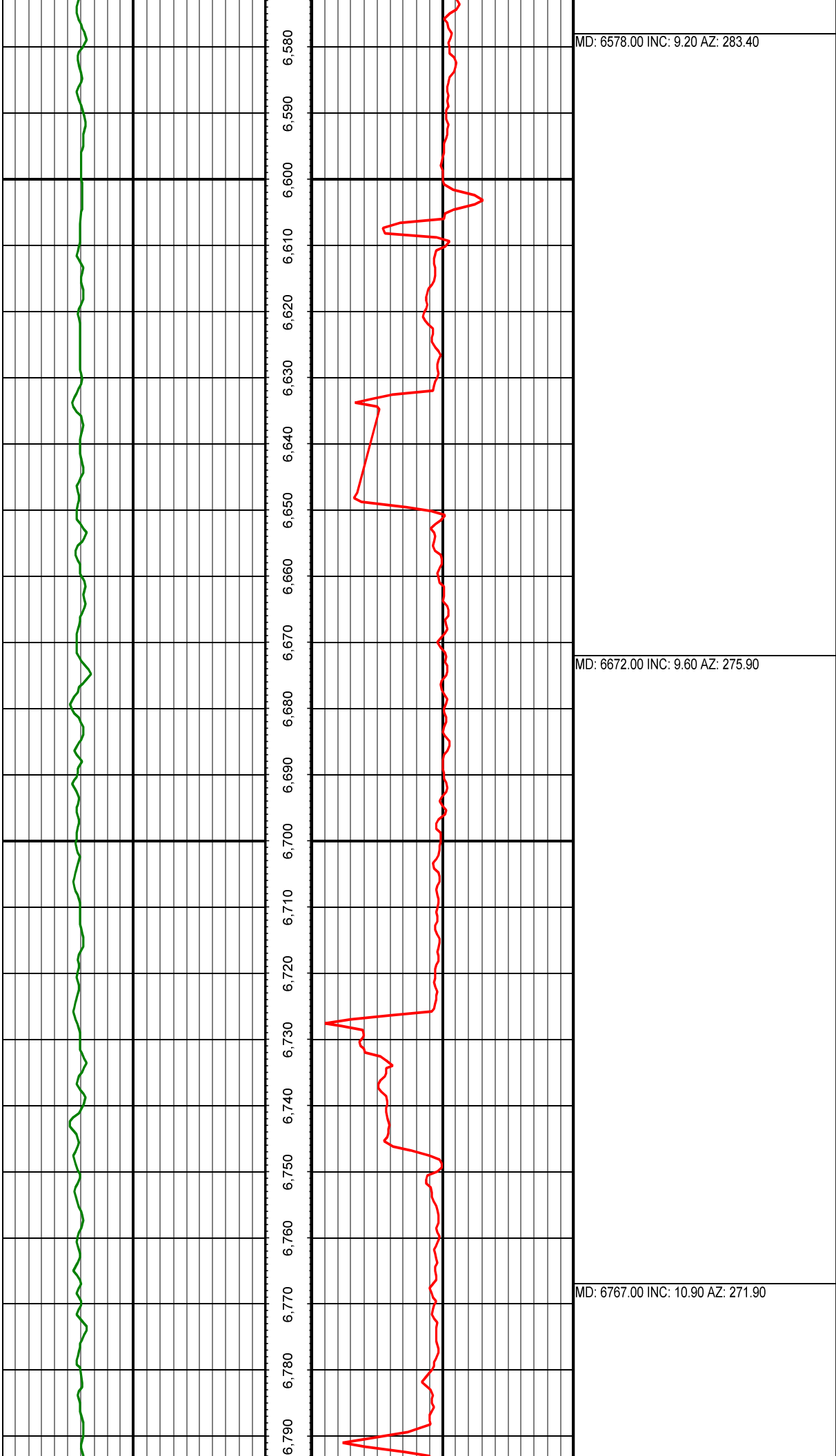
MD: 6105.00 INC: 9.00 AZ: 294.40





MD: 6389.00 INC: 8.80 AZ: 277.80

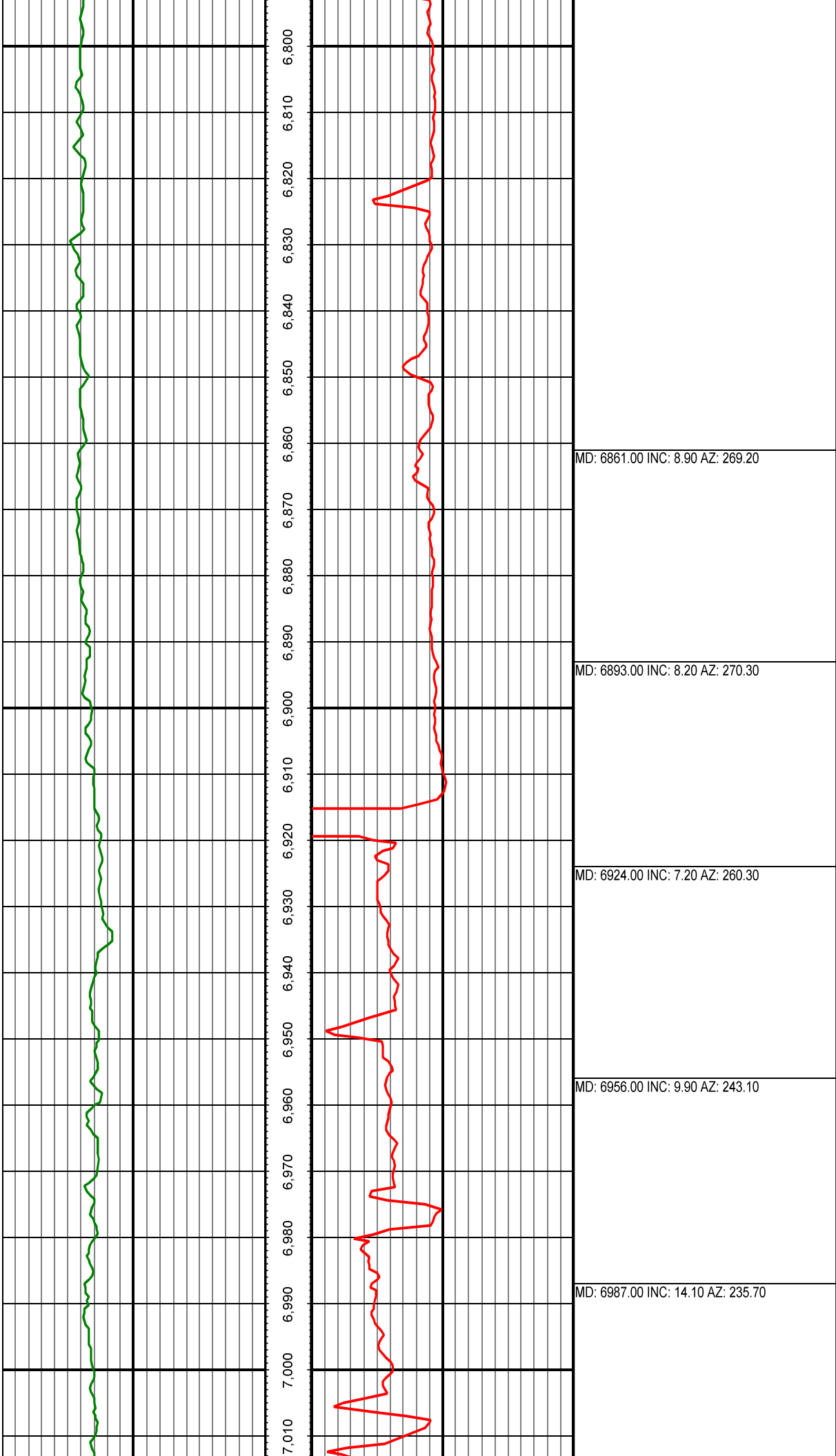
MD: 6484.00 INC: 9.60 AZ: 276.10

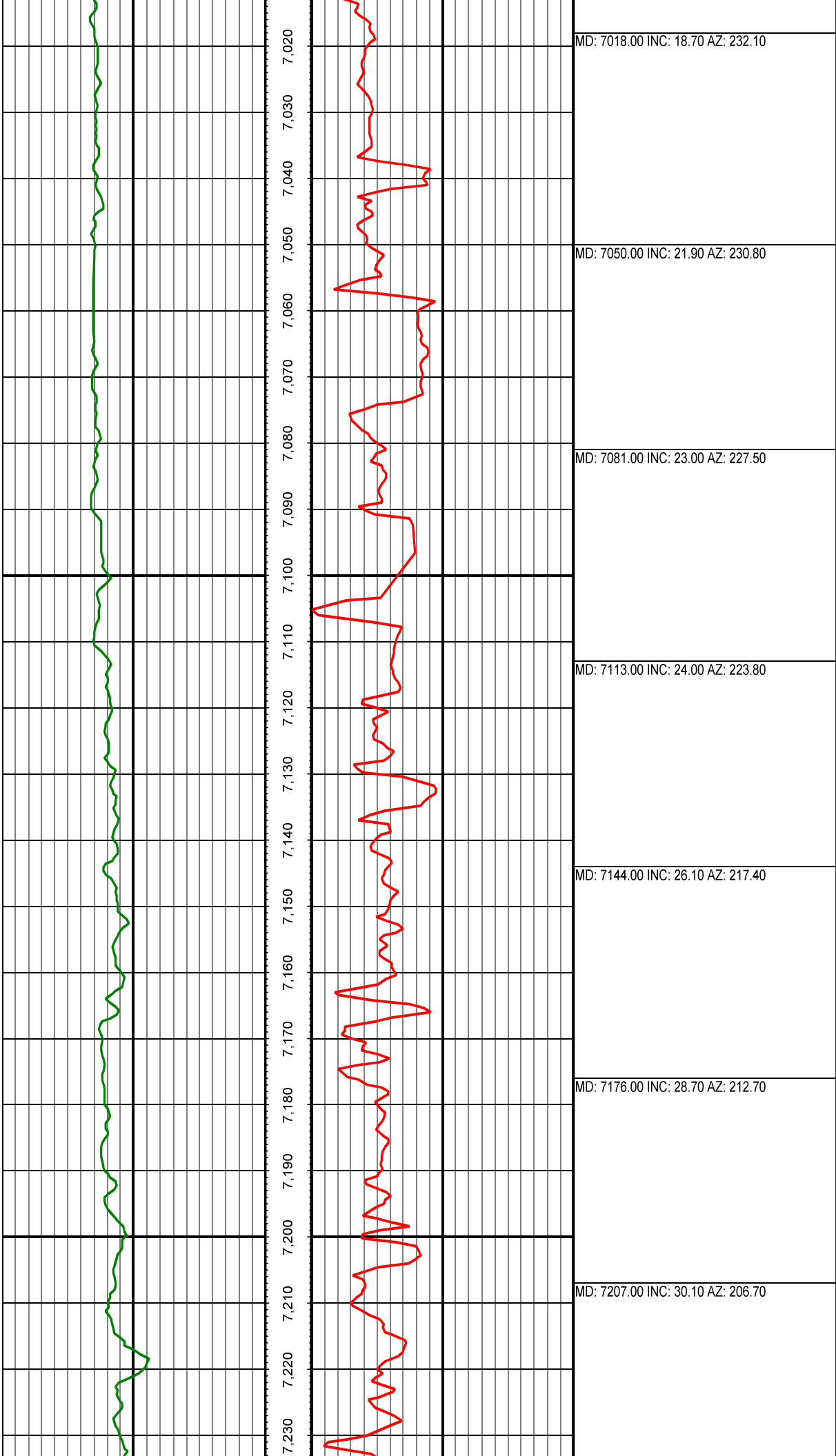


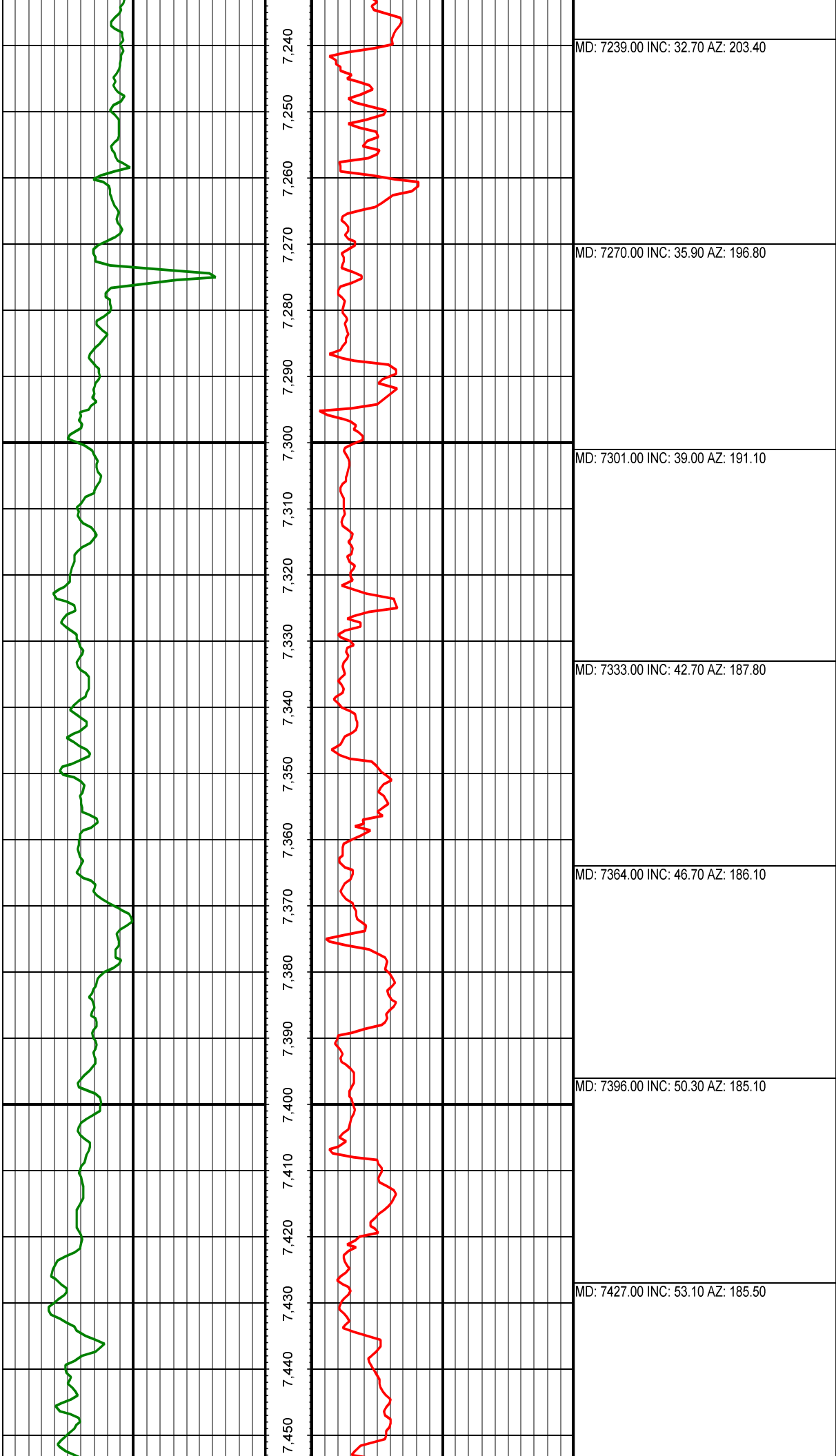
MD: 6578.00 INC: 9.20 AZ: 283.40

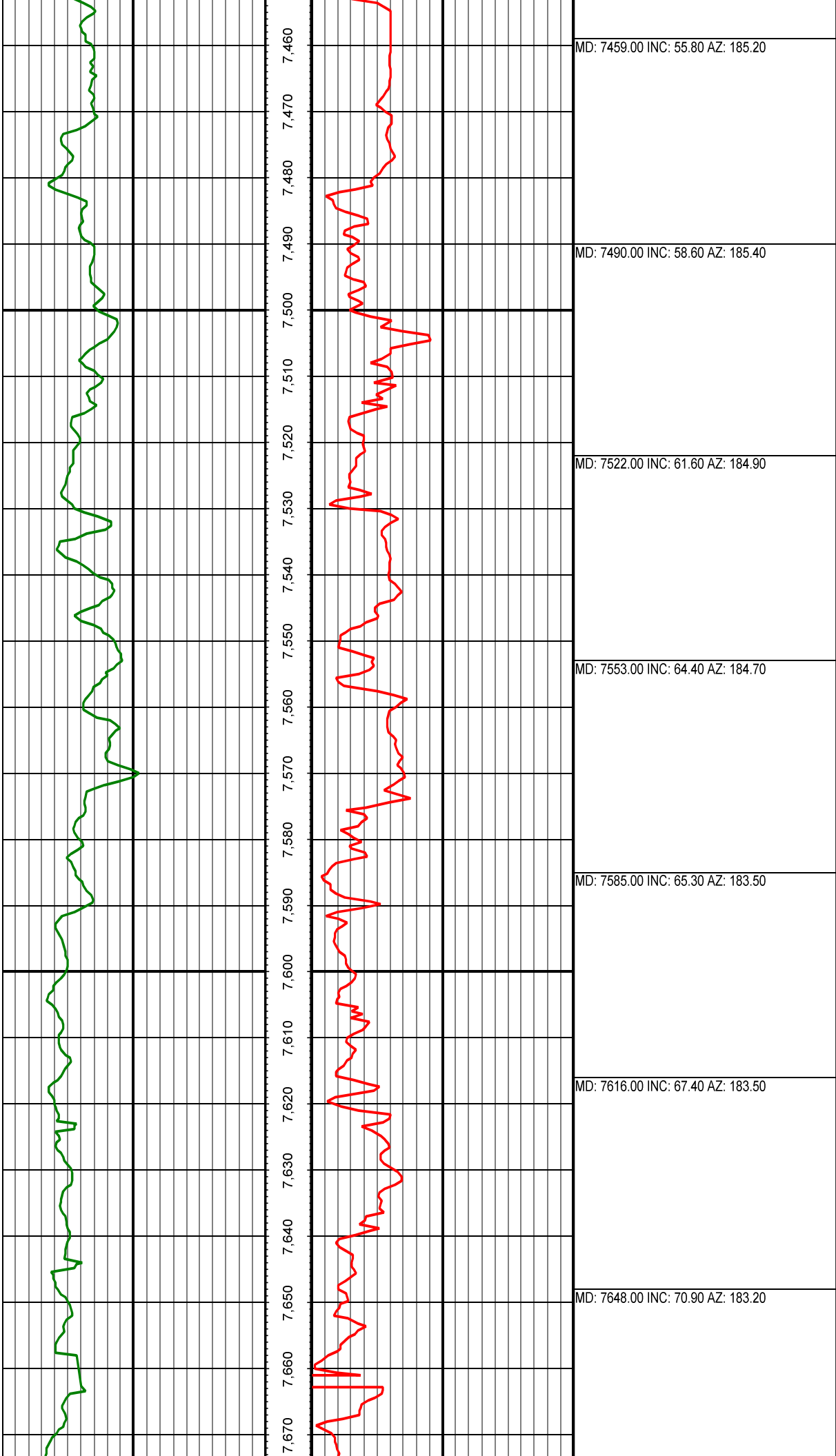
MD: 6672.00 INC: 9.60 AZ: 275.90

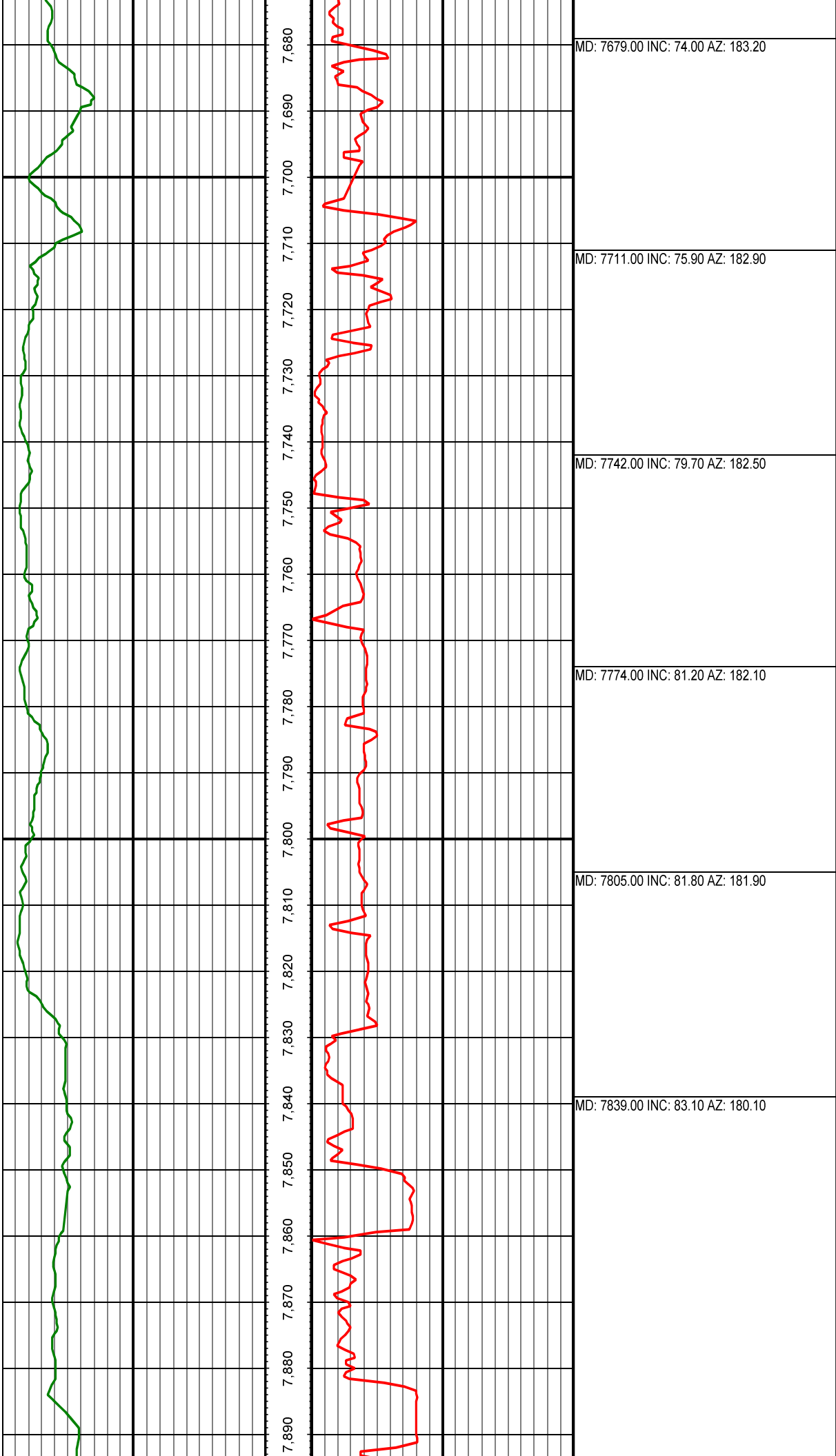
MD: 6767.00 INC: 10.90 AZ: 271.90

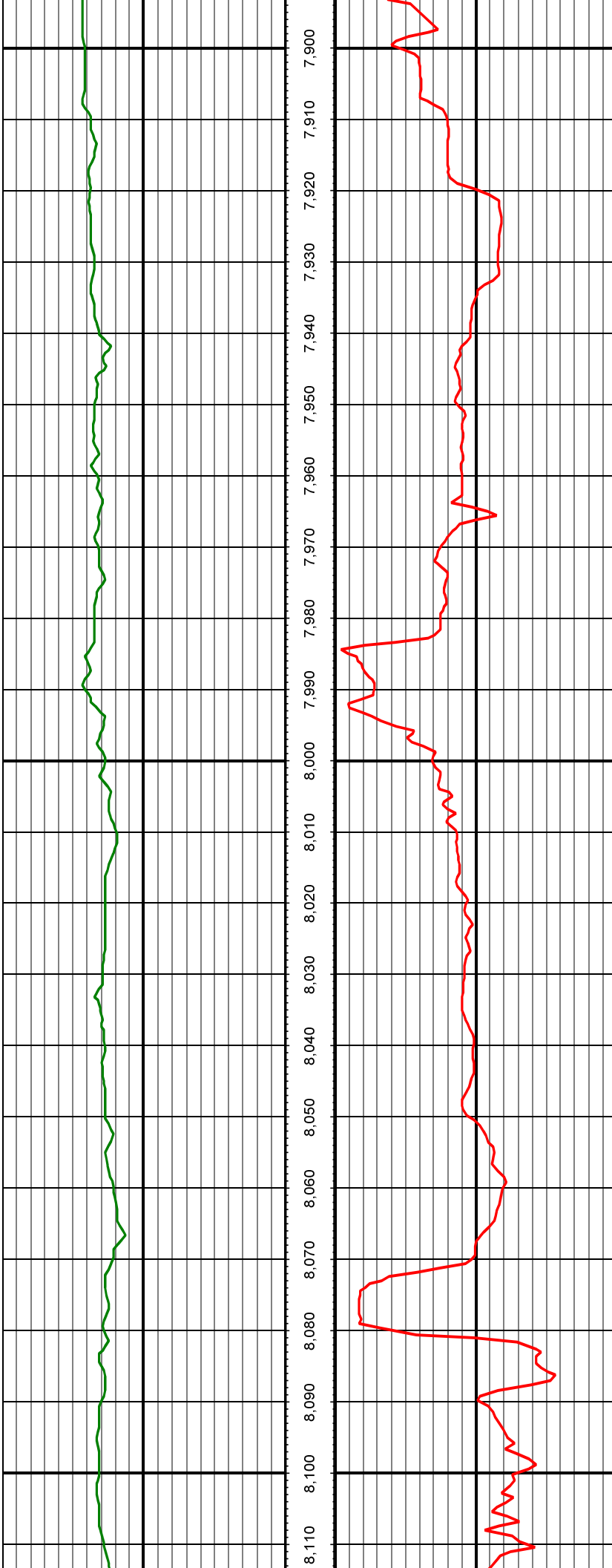






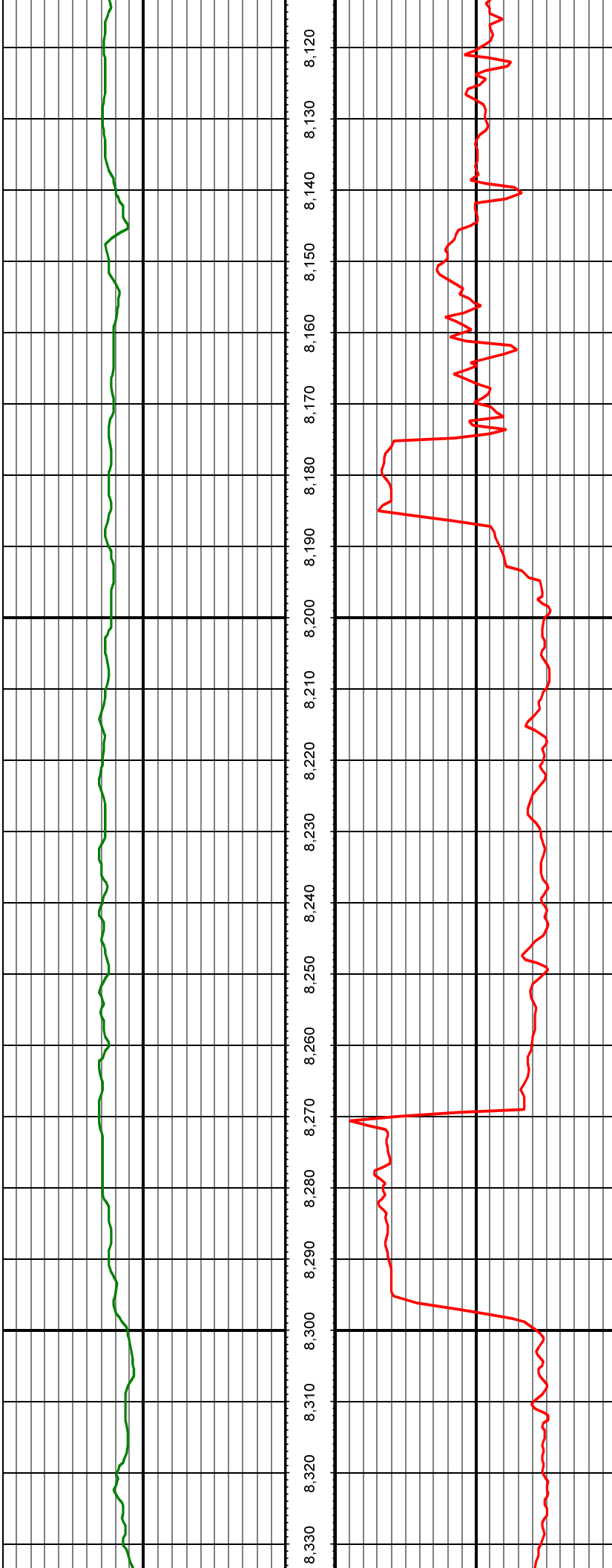






MD: 7930.00 INC: 88.00 AZ: 178.50

MD: 8024.00 INC: 87.10 AZ: 178.50

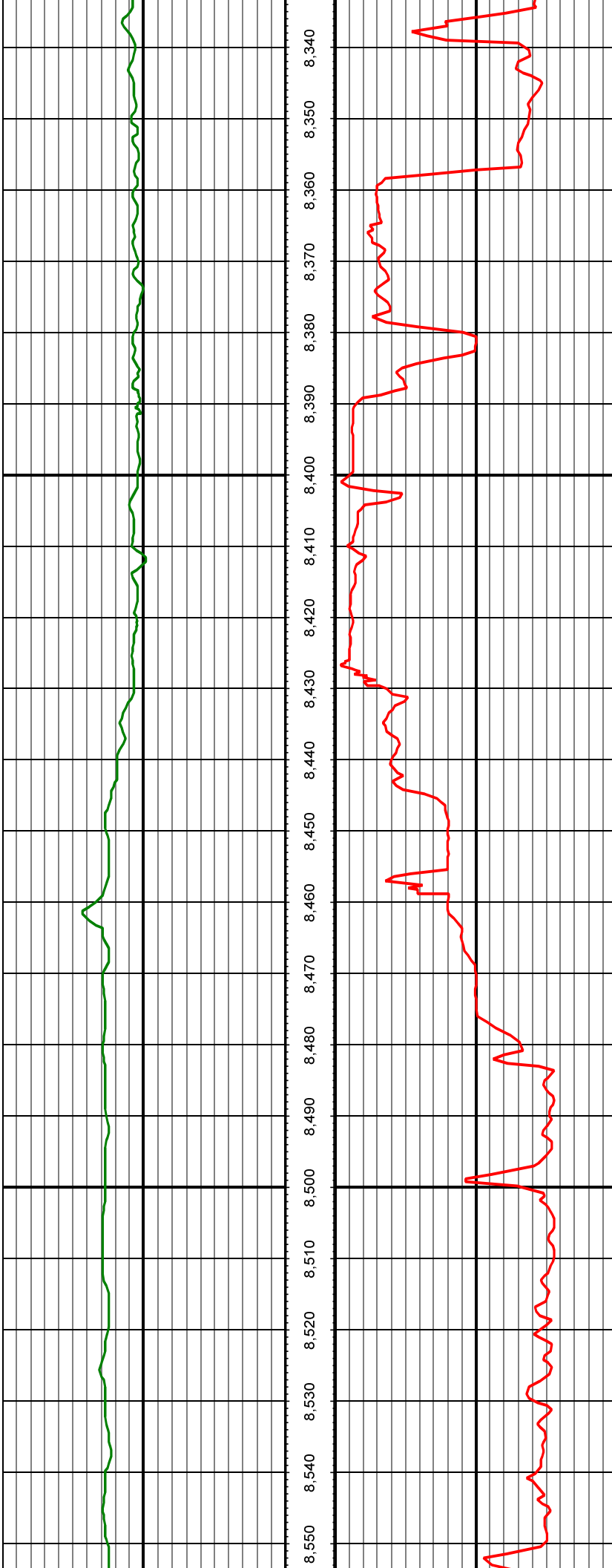


8,120 8,130 8,140 8,150 8,160 8,170 8,180 8,190 8,200 8,210 8,220 8,230 8,240 8,250 8,260 8,270 8,280 8,290 8,300 8,310 8,320 8,330

MD: 8119.00 INC: 87.30 AZ: 179.60

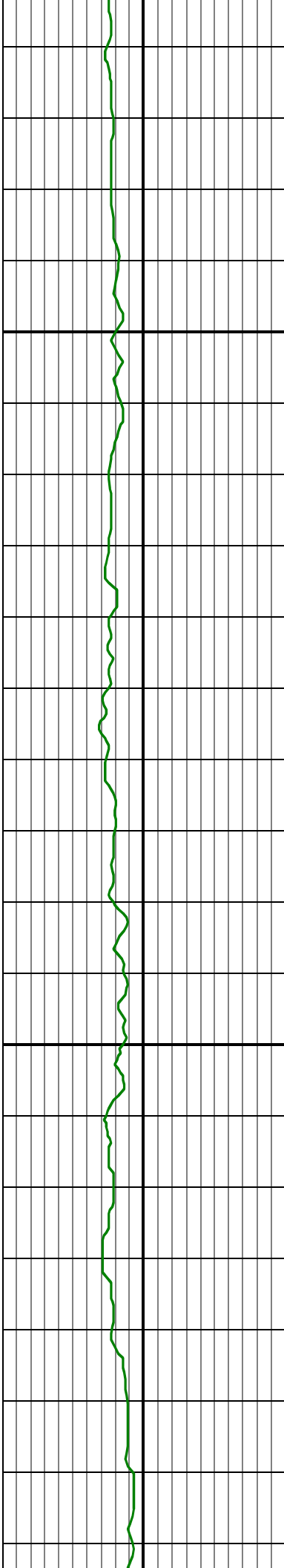
MD: 8213.00 INC: 86.90 AZ: 179.40

MD: 8308.00 INC: 89.10 AZ: 179.90

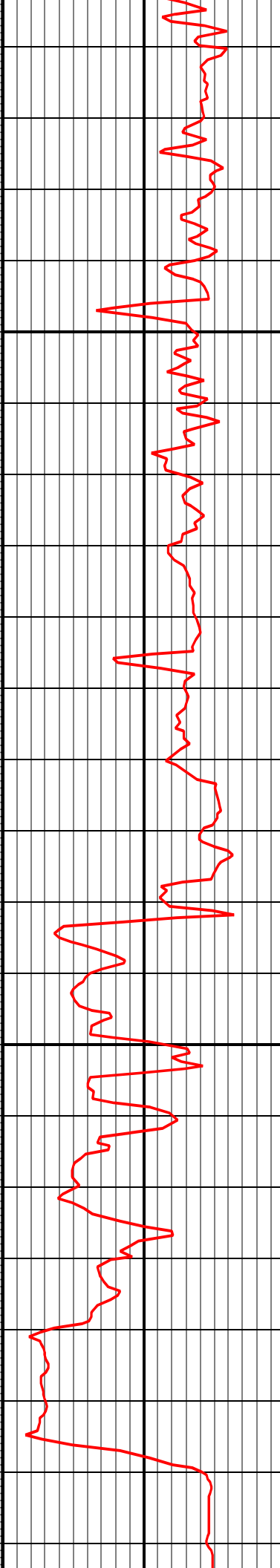


MD: 8402.00 INC: 89.90 AZ: 179.90

MD: 8497.00 INC: 91.00 AZ: 181.20

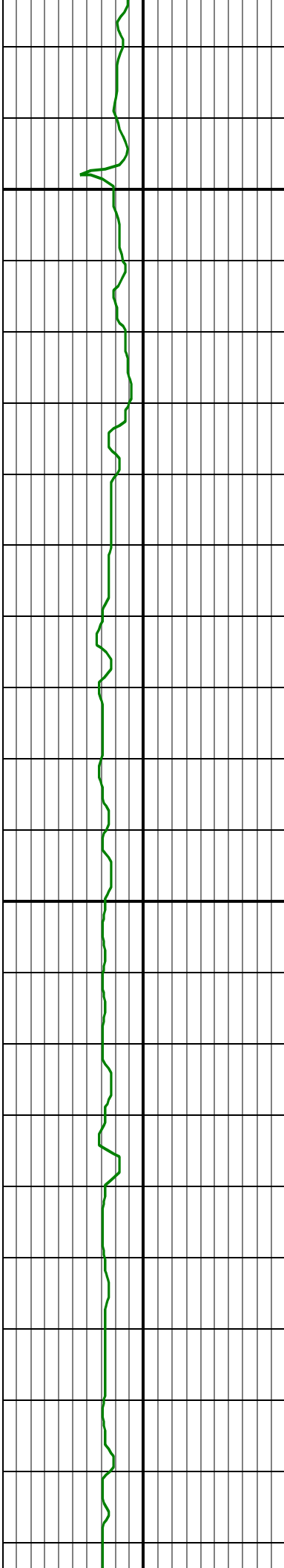


8,560 8,570 8,580 8,590 8,600 8,610 8,620 8,630 8,640 8,650 8,660 8,670 8,680 8,690 8,700 8,710 8,720 8,730 8,740 8,750 8,760 8,770

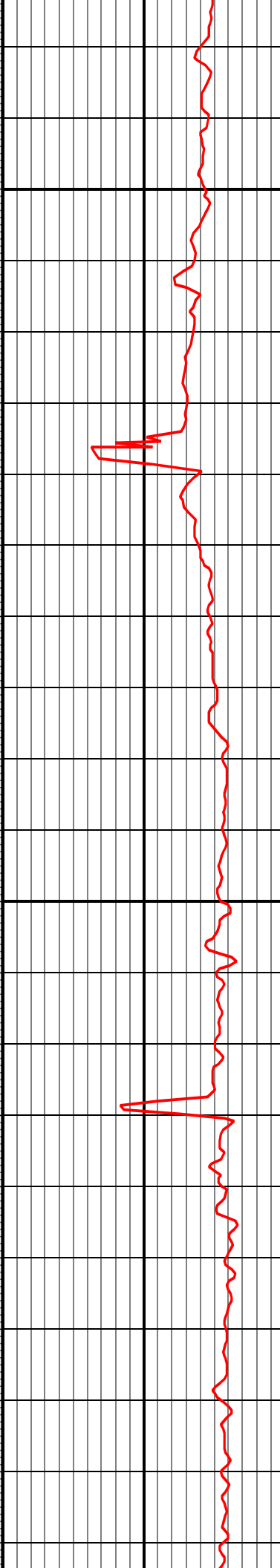


MD: 8591.00 INC: 90.40 AZ: 181.20

MD: 8685.00 INC: 89.40 AZ: 179.40



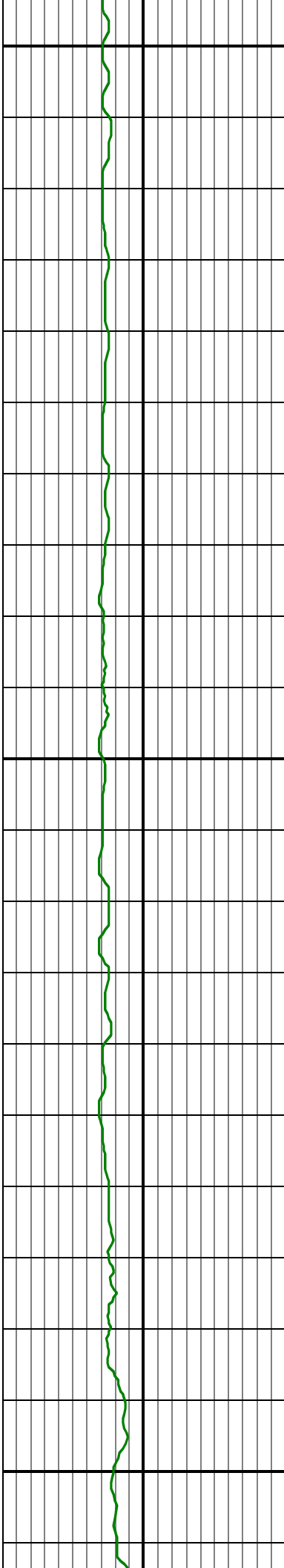
8,780 8,790 8,800 8,810 8,820 8,830 8,840 8,850 8,860 8,870 8,880 8,890 8,900 8,910 8,920 8,930 8,940 8,950 8,960 8,970 8,980 8,990



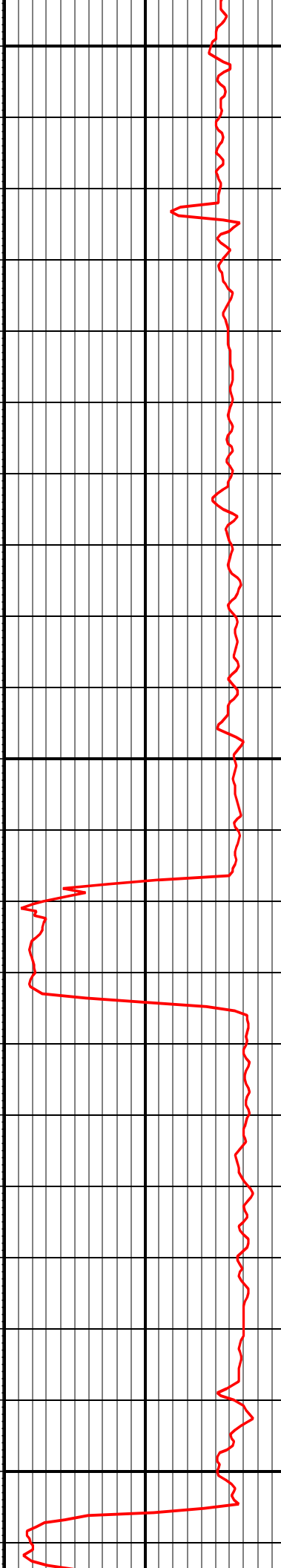
MD: 8780.00 INC: 90.50 AZ: 180.20

MD: 8874.00 INC: 90.50 AZ: 180.70

MD: 8969.00 INC: 90.20 AZ: 181.10

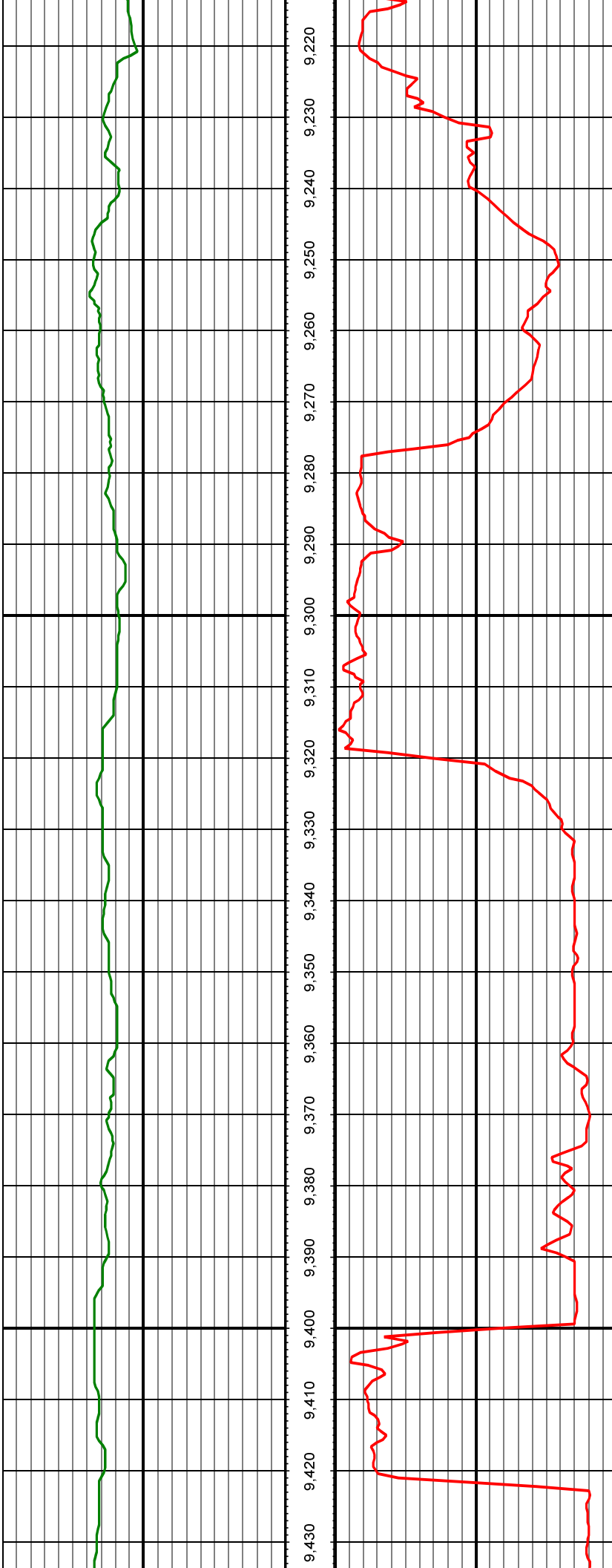


9,000 9,010 9,020 9,030 9,040 9,050 9,060 9,070 9,080 9,090 9,100 9,110 9,120 9,130 9,140 9,150 9,160 9,170 9,180 9,190 9,200 9,210



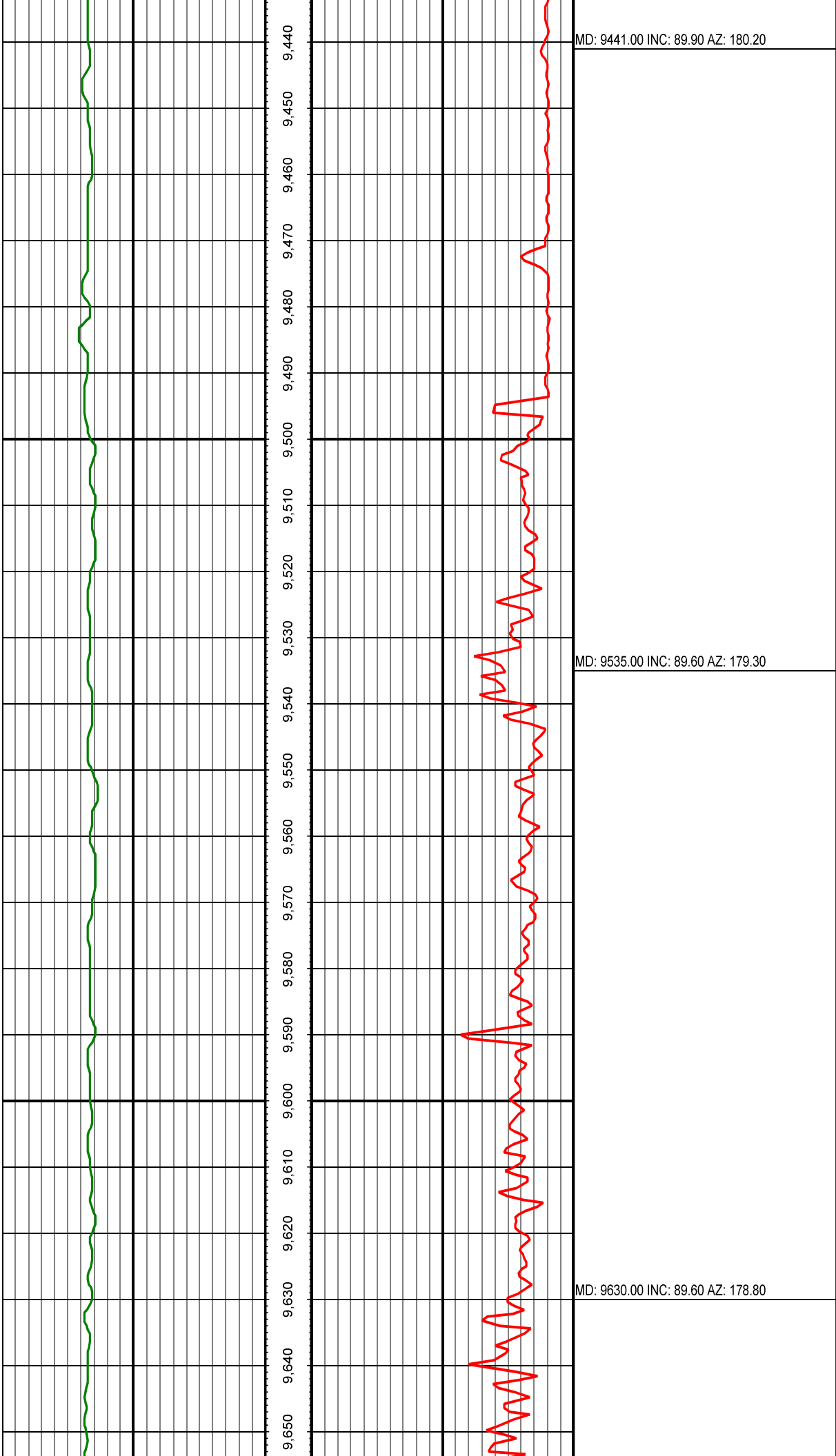
MD: 9064.00 INC: 89.60 AZ: 180.70

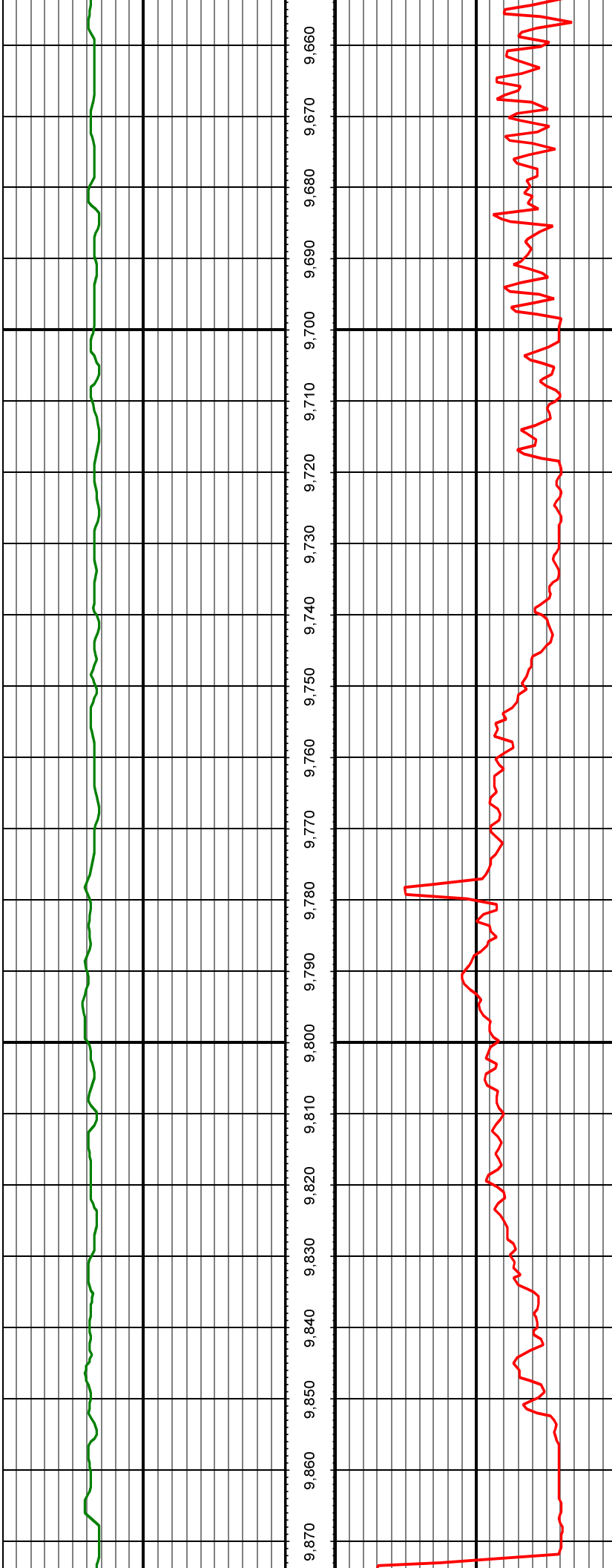
MD: 9158.00 INC: 90.70 AZ: 181.30



MD: 9252.00 INC: 91.30 AZ: 181.80

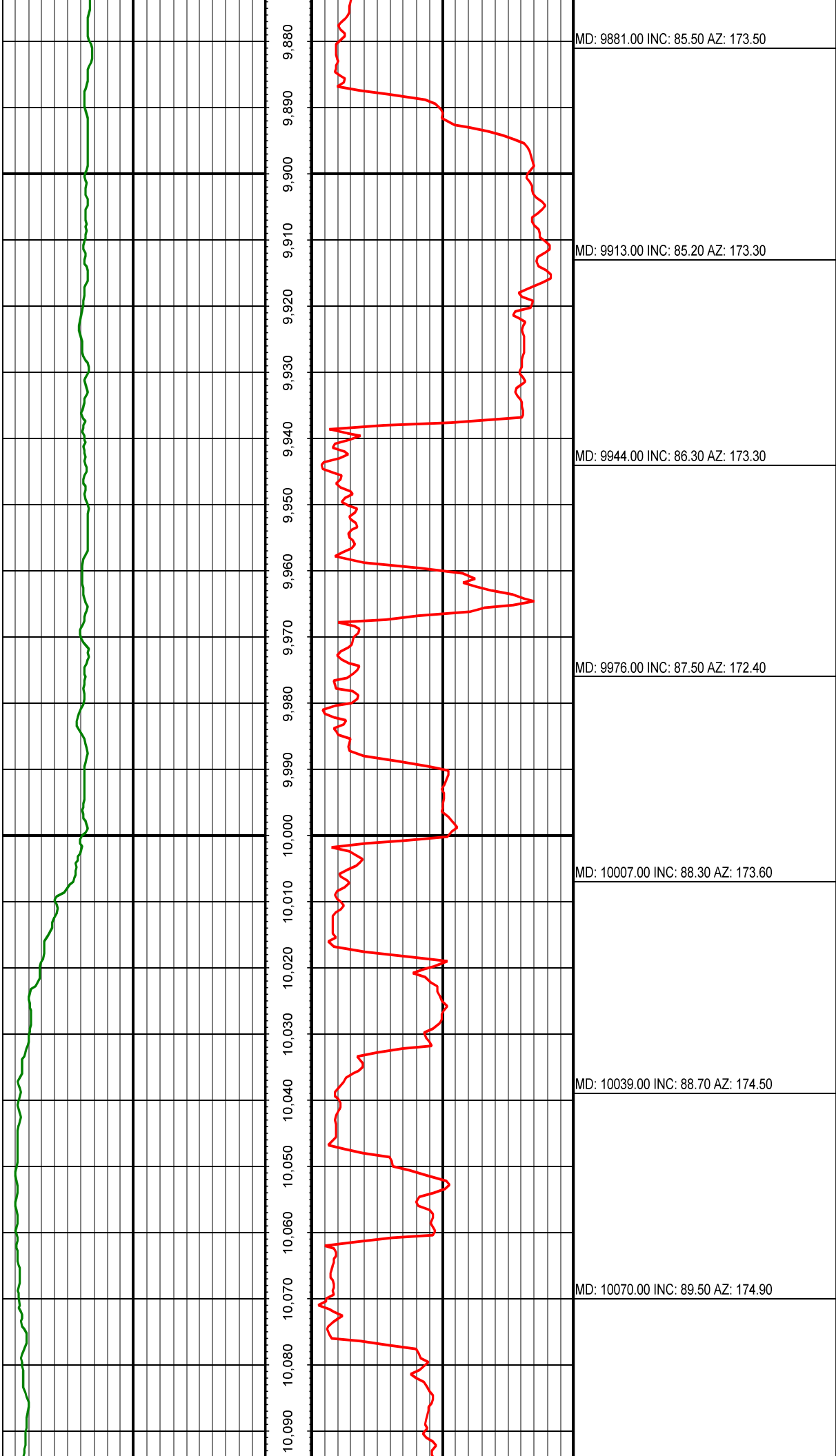
MD: 9347.00 INC: 91.00 AZ: 181.10

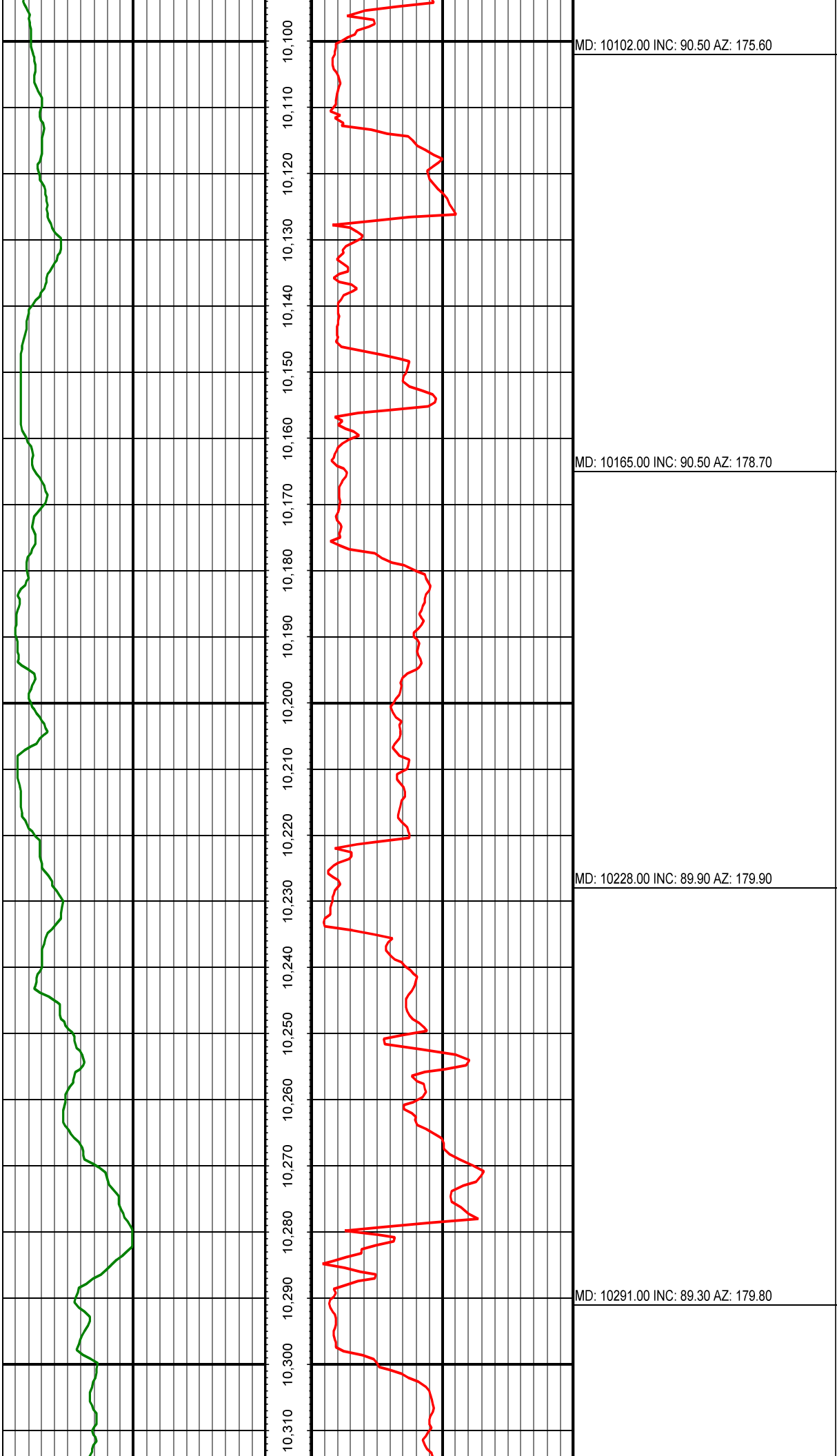




MD: 9724.00 INC: 89.50 AZ: 178.80

MD: 9819.00 INC: 86.50 AZ: 175.30



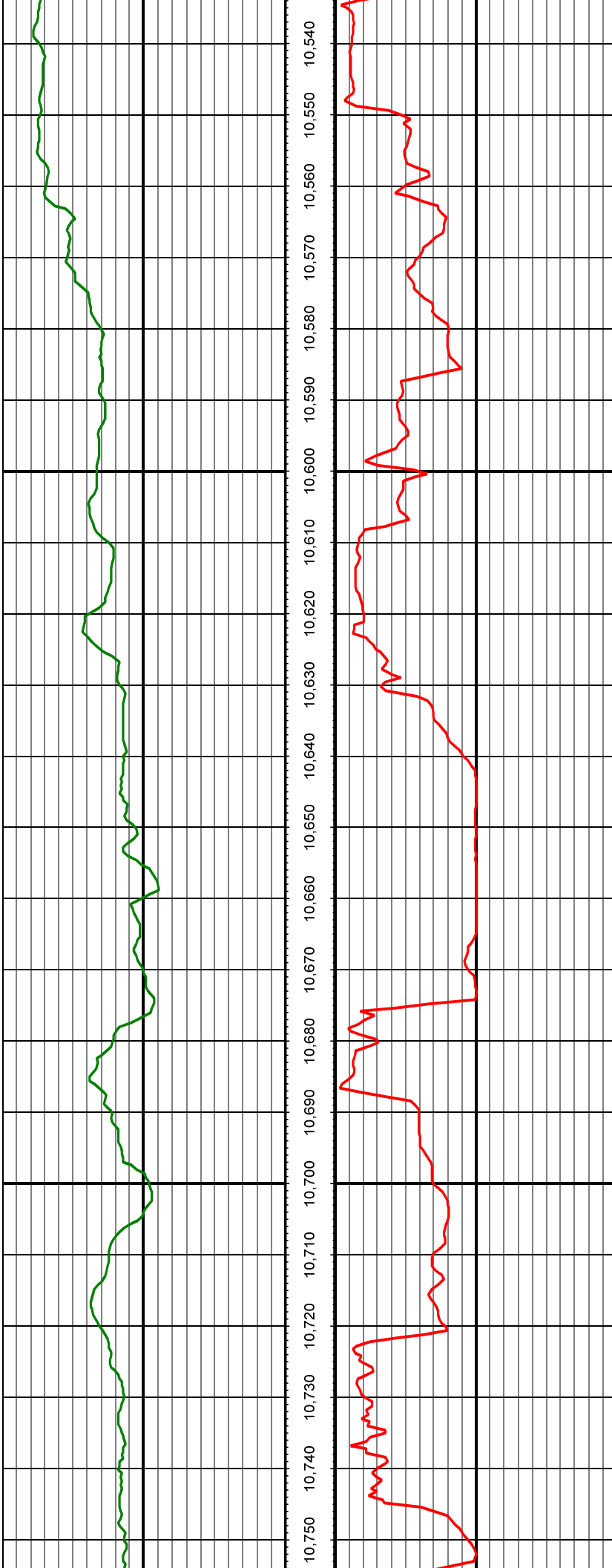




MD: 10354.00 INC: 89.90 AZ: 180.30

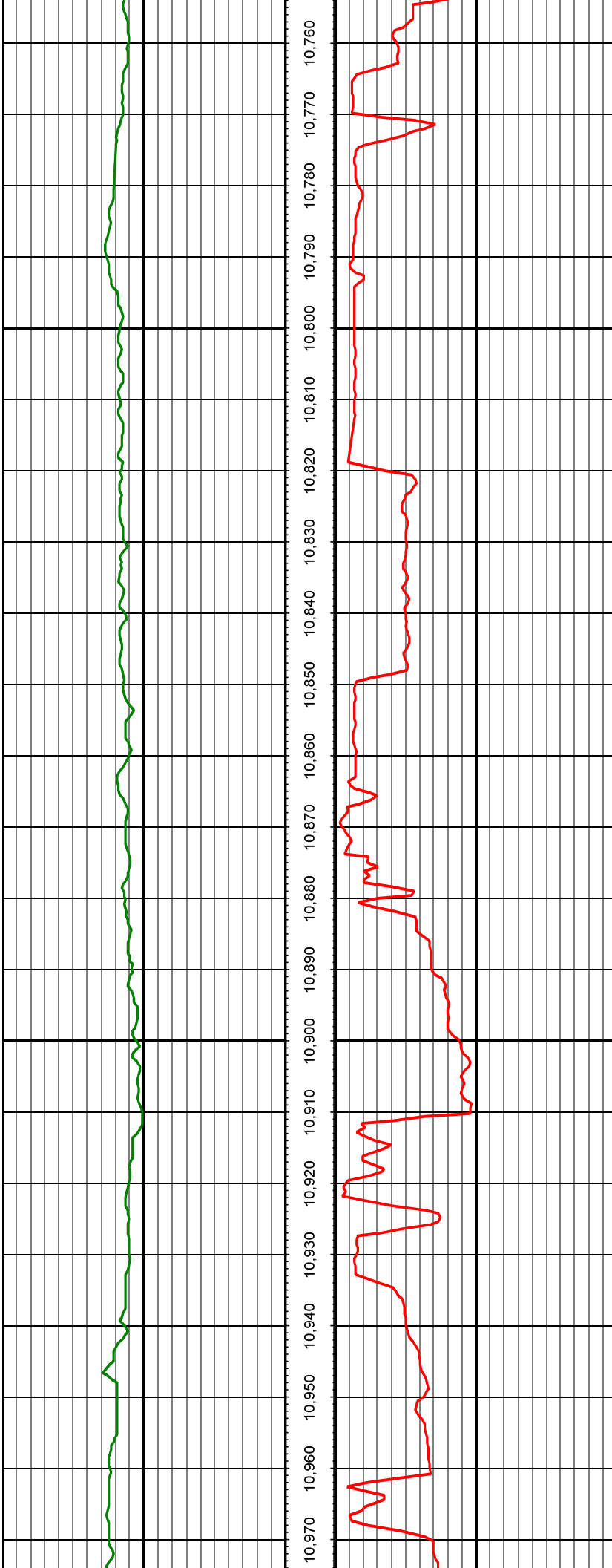
MD: 10416.00 INC: 89.40 AZ: 179.60

MD: 10479.00 INC: 88.90 AZ: 179.80



MD: 10574.00 INC: 89.50 AZ: 180.80

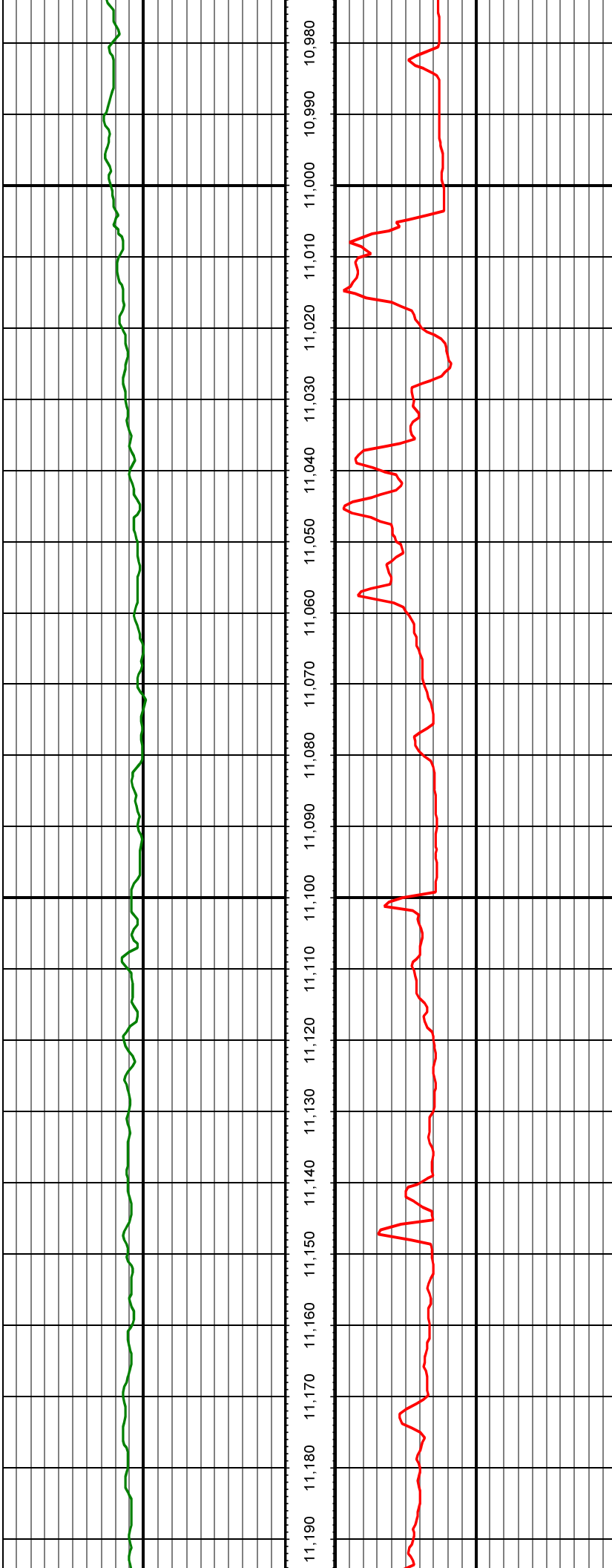
MD: 10669.00 INC: 92.00 AZ: 181.20



MD: 10763.00 INC: 91.10 AZ: 182.00

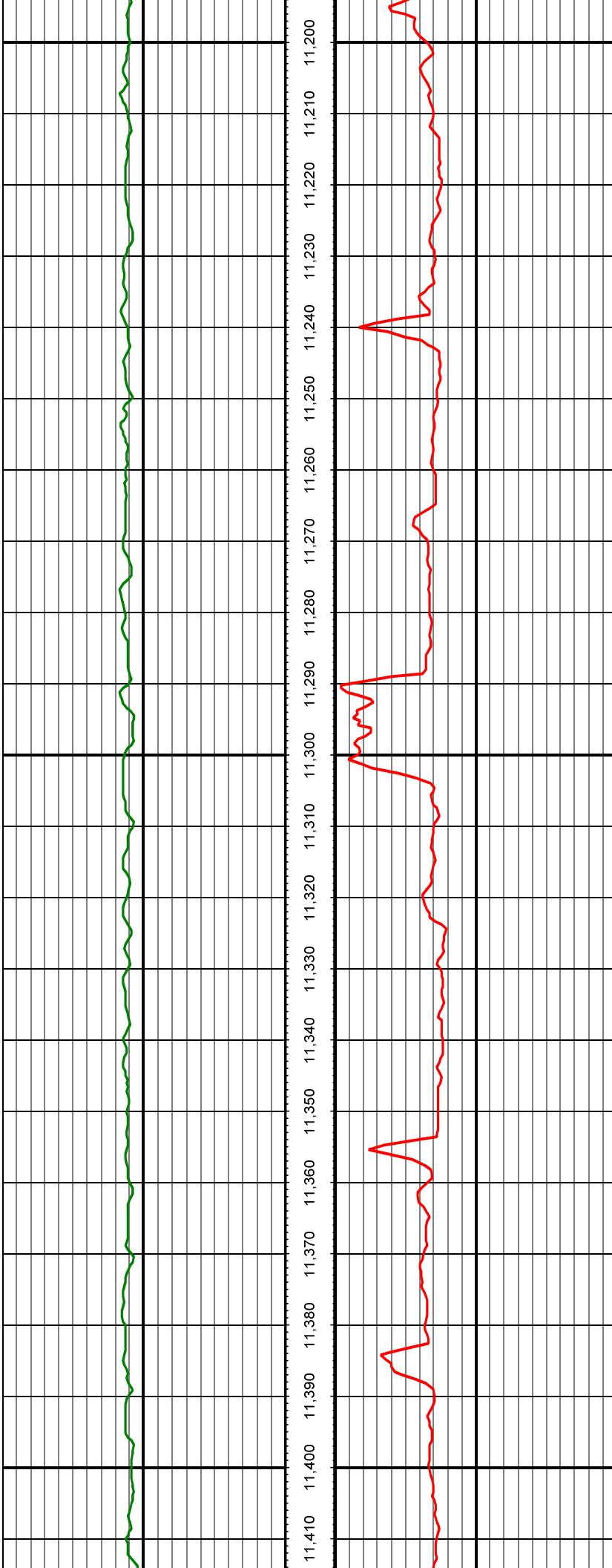
MD: 10858.00 INC: 91.90 AZ: 182.60

MD: 10952.00 INC: 90.70 AZ: 183.30



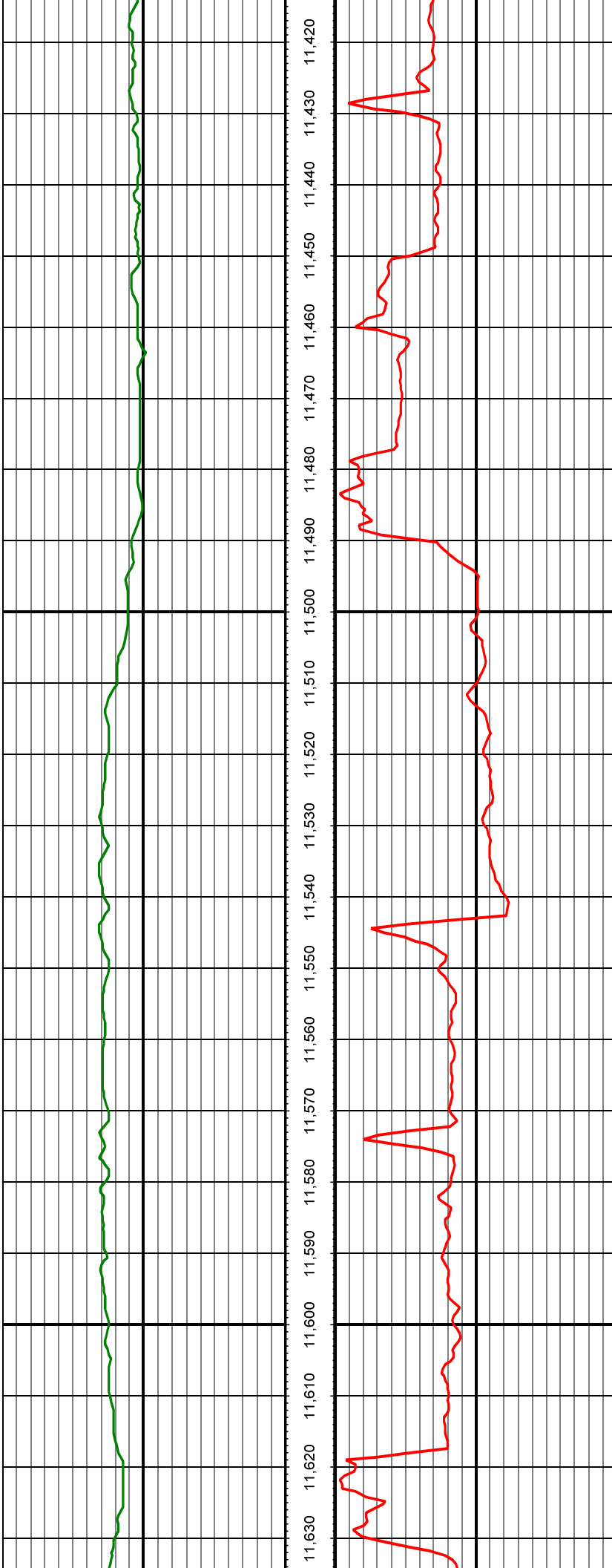
MD: 11047.00 INC: 89.90 AZ: 182.60

MD: 11141.00 INC: 90.00 AZ: 182.50



MD: 11235.00 INC: 89.90 AZ: 182.40

MD: 11330.00 INC: 90.40 AZ: 182.70



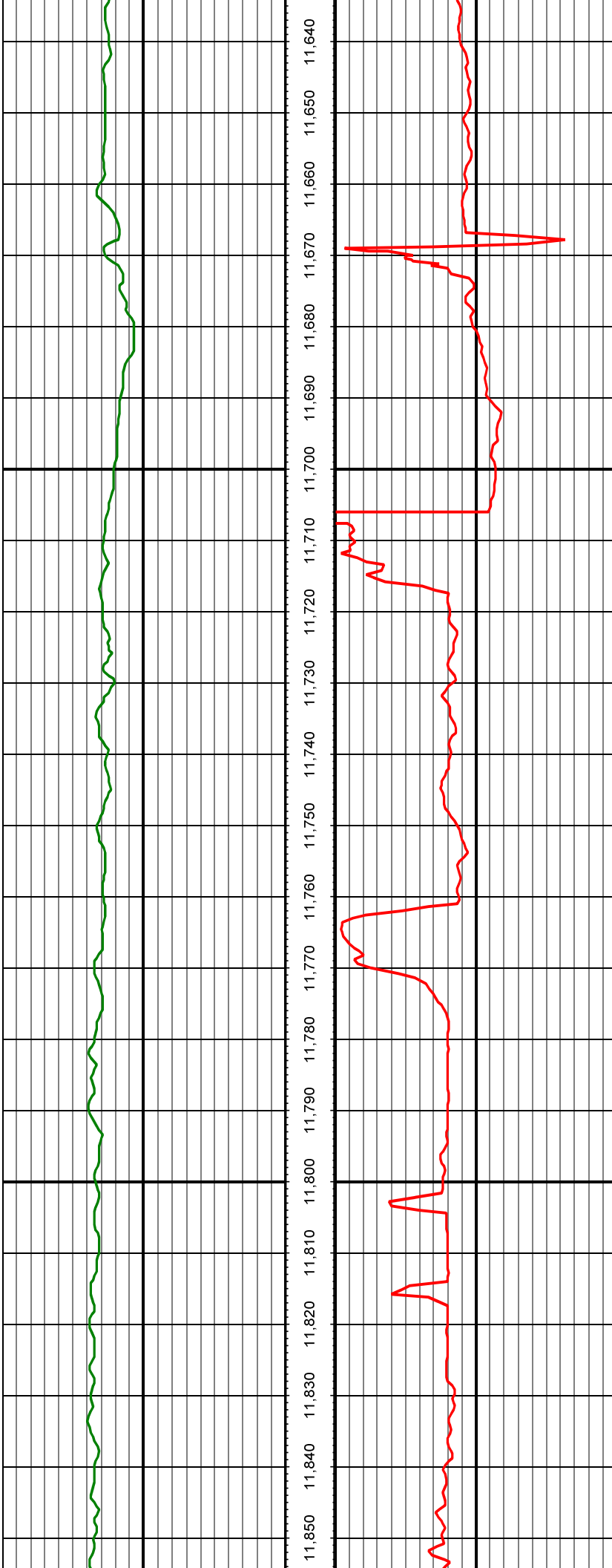
11,420 11,430 11,440 11,450 11,460 11,470 11,480 11,490 11,500 11,510 11,520 11,530 11,540 11,550 11,560 11,570 11,580 11,590 11,600 11,610 11,620 11,630

MD: 11424.00 INC: 90.30 AZ: 182.10

MD: 11519.00 INC: 91.00 AZ: 182.50

MD: 11562.00 INC: 91.20 AZ: 182.40

MD: 11613.00 INC: 91.30 AZ: 181.80



11,640 11,650 11,660 11,670 11,680 11,690 11,700 11,710 11,720 11,730 11,740 11,750 11,760 11,770 11,780 11,790 11,800 11,810 11,820 11,830 11,840 11,850

MD: 11651.00 INC: 91.50 AZ: 181.40

MD: 11707.00 INC: 92.30 AZ: 181.80

MD: 11802.00 INC: 91.90 AZ: 181.60

