

EE3

Well Name: **Grizzly 3-32H**

Surface Location: Grizzly 3-32H PAD Sec.32-T8N-R80W
North American Datum 1983 , US State Plane 1983 , Colorado Northern Zone

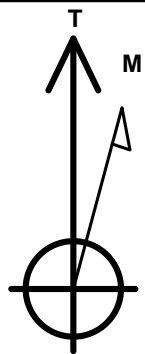
Ground Elevation: 8101.0

+N/-S	+E/-W	Northing	Easting	Latitude	Longitude	Slot
0.0	0.0	1472773.60	2750790.58	40.627697	-106.397825	

ENSIGN RIG 12 12' KB RKB @ 8113.0ft (ENSIGN RIG 12 12' KB)

WELLBORE TARGET DETAILS

Name	TVD	+N/-S	+E/-W	Shape
SHL 709'FNL & 2404'FWL	1.0	0.0	0.0	Point
LANDING PT	8071.0	-441.8	-195.3	Point
BHL 600'FSL & 600'FWL	8151.0	-3963.8	-1752.7	Point



Azimuths to True North
Magnetic North: 9.39°

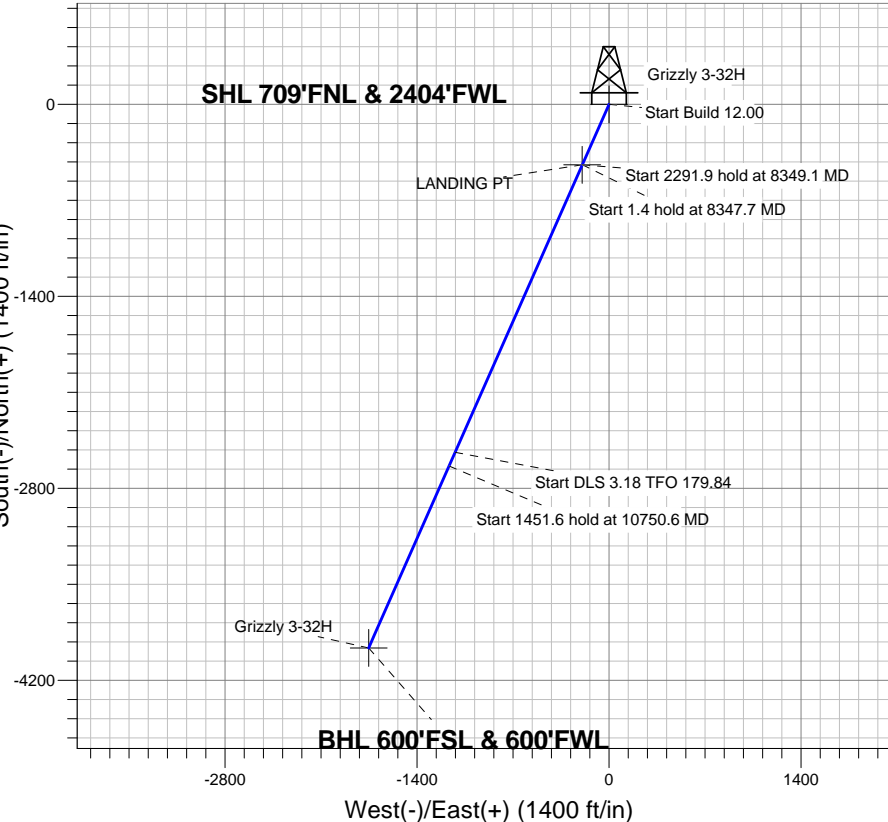
Magnetic Field
Strength: 52778.6snT
Dip Angle: 66.87°
Date: 12/20/2013
Model: IGRF2010

Grizzly 3-32H PAD Sec.32-T8N-R80W
Grizzly 3-32H
Plan #2 (12-20-13)
13:28, December 20 2013

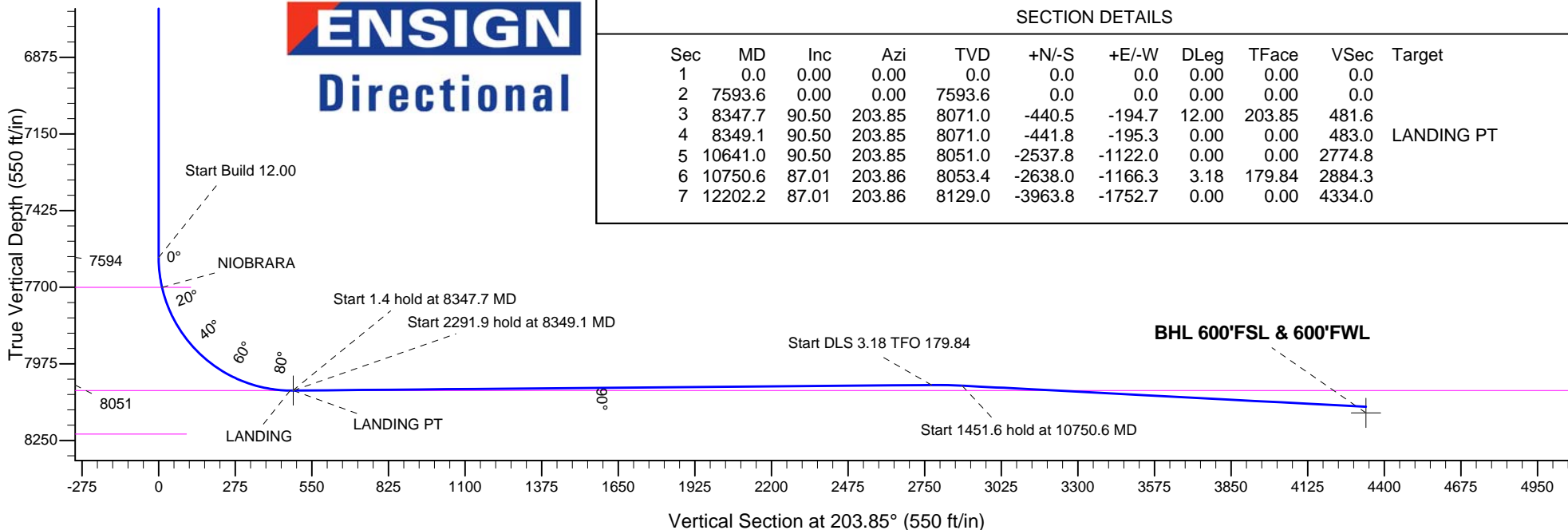
ANNOTATIONS

TVD	MD	Annotation
7593.6	7593.6	Start Build 12.00
8071.0	8347.7	Start 1.4 hold at 8347.7 MD
8071.0	8349.1	Start 2291.9 hold at 8349.1 MD
8051.0	10641.0	Start DLS 3.18 TFO 179.84
8053.4	10750.6	Start 1451.6 hold at 10750.6 MD
8129.0	12202.2	TD at 12202.2

South(-)/North(+) (1400 ft/in)



ENSIGN
Directional



SECTION DETAILS

Sec	MD	Inc	Azi	TVD	+N/-S	+E/-W	DLeg	TFace	VSec	Target
1	0.0	0.00	0.00	0.0	0.0	0.0	0.00	0.00	0.0	
2	7593.6	0.00	0.00	7593.6	0.0	0.0	0.00	0.00	0.0	
3	8347.7	90.50	203.85	8071.0	-440.5	-194.7	12.00	203.85	481.6	
4	8349.1	90.50	203.85	8071.0	-441.8	-195.3	0.00	0.00	483.0	LANDING PT
5	10641.0	90.50	203.85	8051.0	-2537.8	-1122.0	0.00	0.00	2774.8	
6	10750.6	87.01	203.86	8053.4	-2638.0	-1166.3	3.18	179.84	2884.3	
7	12202.2	87.01	203.86	8129.0	-3963.8	-1752.7	0.00	0.00	4334.0	



Directional

EE3

SEC.32-T8N-R80W

Grizzly 3-32H PAD Sec.32-T8N-R80W

Grizzly 3-32H

Wellbore #1

Plan: Plan #2 (12-20-13)

Standard Planning Report

20 December, 2013



Plan Sections										
Measured Depth (ft)	Inclination (°)	Azimuth (°)	Vertical Depth (ft)	+N/-S (ft)	+E/-W (ft)	Dogleg Rate (°/100ft)	Build Rate (°/100ft)	Turn Rate (°/100ft)	TFO (°)	Target
0.0	0.00	0.00	0.0	0.0	0.0	0.00	0.00	0.00	0.00	
7,593.6	0.00	0.00	7,593.6	0.0	0.0	0.00	0.00	0.00	0.00	
8,347.7	90.50	203.85	8,071.0	-440.5	-194.7	12.00	12.00	0.00	203.85	
8,349.1	90.50	203.85	8,071.0	-441.8	-195.3	0.00	0.00	0.00	0.00	LANDING PT
10,641.0	90.50	203.85	8,051.0	-2,537.8	-1,122.0	0.00	0.00	0.00	0.00	
10,750.6	87.01	203.86	8,053.4	-2,638.0	-1,166.3	3.18	-3.18	0.01	179.84	
12,202.2	87.01	203.86	8,129.0	-3,963.8	-1,752.7	0.00	0.00	0.00	0.00	

Database:	Landmark	Local Co-ordinate Reference:	Well Grizzly 3-32H
Company:	EE3	TVD Reference:	RKB @ 8113.0ft (ENSIGN RIG 12 12' KB)
Project:	SEC.32-T8N-R80W	MD Reference:	RKB @ 8113.0ft (ENSIGN RIG 12 12' KB)
Site:	Grizzly 3-32H PAD Sec.32-T8N-R80W	North Reference:	True
Well:	Grizzly 3-32H	Survey Calculation Method:	Minimum Curvature
Wellbore:	Wellbore #1		
Design:	Plan #2 (12-20-13)		

Planned Survey									
Measured Depth (ft)	Inclination (°)	Azimuth (°)	Vertical Depth (ft)	+N/-S (ft)	+E/-W (ft)	Vertical Section (ft)	Dogleg Rate (°/100ft)	Build Rate (°/100ft)	Turn Rate (°/100ft)
0.0	0.00	0.00	0.0	0.0	0.0	0.0	0.00	0.00	0.00
1.0	0.00	0.00	1.0	0.0	0.0	0.0	0.00	0.00	0.00
SHL 709'FNL & 2404'FWL									
100.0	0.00	0.00	100.0	0.0	0.0	0.0	0.00	0.00	0.00
200.0	0.00	0.00	200.0	0.0	0.0	0.0	0.00	0.00	0.00
300.0	0.00	0.00	300.0	0.0	0.0	0.0	0.00	0.00	0.00
400.0	0.00	0.00	400.0	0.0	0.0	0.0	0.00	0.00	0.00
500.0	0.00	0.00	500.0	0.0	0.0	0.0	0.00	0.00	0.00
600.0	0.00	0.00	600.0	0.0	0.0	0.0	0.00	0.00	0.00
700.0	0.00	0.00	700.0	0.0	0.0	0.0	0.00	0.00	0.00
800.0	0.00	0.00	800.0	0.0	0.0	0.0	0.00	0.00	0.00
900.0	0.00	0.00	900.0	0.0	0.0	0.0	0.00	0.00	0.00
1,000.0	0.00	0.00	1,000.0	0.0	0.0	0.0	0.00	0.00	0.00
1,100.0	0.00	0.00	1,100.0	0.0	0.0	0.0	0.00	0.00	0.00
1,200.0	0.00	0.00	1,200.0	0.0	0.0	0.0	0.00	0.00	0.00
1,300.0	0.00	0.00	1,300.0	0.0	0.0	0.0	0.00	0.00	0.00
1,400.0	0.00	0.00	1,400.0	0.0	0.0	0.0	0.00	0.00	0.00
1,500.0	0.00	0.00	1,500.0	0.0	0.0	0.0	0.00	0.00	0.00
1,600.0	0.00	0.00	1,600.0	0.0	0.0	0.0	0.00	0.00	0.00
1,700.0	0.00	0.00	1,700.0	0.0	0.0	0.0	0.00	0.00	0.00
1,800.0	0.00	0.00	1,800.0	0.0	0.0	0.0	0.00	0.00	0.00
1,900.0	0.00	0.00	1,900.0	0.0	0.0	0.0	0.00	0.00	0.00
2,000.0	0.00	0.00	2,000.0	0.0	0.0	0.0	0.00	0.00	0.00
2,100.0	0.00	0.00	2,100.0	0.0	0.0	0.0	0.00	0.00	0.00
2,200.0	0.00	0.00	2,200.0	0.0	0.0	0.0	0.00	0.00	0.00
2,300.0	0.00	0.00	2,300.0	0.0	0.0	0.0	0.00	0.00	0.00
2,400.0	0.00	0.00	2,400.0	0.0	0.0	0.0	0.00	0.00	0.00
2,500.0	0.00	0.00	2,500.0	0.0	0.0	0.0	0.00	0.00	0.00
2,600.0	0.00	0.00	2,600.0	0.0	0.0	0.0	0.00	0.00	0.00
2,700.0	0.00	0.00	2,700.0	0.0	0.0	0.0	0.00	0.00	0.00
2,751.0	0.00	0.00	2,751.0	0.0	0.0	0.0	0.00	0.00	0.00
MIDCOAL									
2,800.0	0.00	0.00	2,800.0	0.0	0.0	0.0	0.00	0.00	0.00
2,900.0	0.00	0.00	2,900.0	0.0	0.0	0.0	0.00	0.00	0.00
3,000.0	0.00	0.00	3,000.0	0.0	0.0	0.0	0.00	0.00	0.00
3,100.0	0.00	0.00	3,100.0	0.0	0.0	0.0	0.00	0.00	0.00
3,200.0	0.00	0.00	3,200.0	0.0	0.0	0.0	0.00	0.00	0.00
3,300.0	0.00	0.00	3,300.0	0.0	0.0	0.0	0.00	0.00	0.00
3,400.0	0.00	0.00	3,400.0	0.0	0.0	0.0	0.00	0.00	0.00
3,500.0	0.00	0.00	3,500.0	0.0	0.0	0.0	0.00	0.00	0.00
3,531.0	0.00	0.00	3,531.0	0.0	0.0	0.0	0.00	0.00	0.00
SUDDETH COAL									
3,600.0	0.00	0.00	3,600.0	0.0	0.0	0.0	0.00	0.00	0.00
3,700.0	0.00	0.00	3,700.0	0.0	0.0	0.0	0.00	0.00	0.00
3,800.0	0.00	0.00	3,800.0	0.0	0.0	0.0	0.00	0.00	0.00
3,900.0	0.00	0.00	3,900.0	0.0	0.0	0.0	0.00	0.00	0.00
4,000.0	0.00	0.00	4,000.0	0.0	0.0	0.0	0.00	0.00	0.00
4,100.0	0.00	0.00	4,100.0	0.0	0.0	0.0	0.00	0.00	0.00
4,200.0	0.00	0.00	4,200.0	0.0	0.0	0.0	0.00	0.00	0.00
4,300.0	0.00	0.00	4,300.0	0.0	0.0	0.0	0.00	0.00	0.00
4,400.0	0.00	0.00	4,400.0	0.0	0.0	0.0	0.00	0.00	0.00
4,500.0	0.00	0.00	4,500.0	0.0	0.0	0.0	0.00	0.00	0.00
4,600.0	0.00	0.00	4,600.0	0.0	0.0	0.0	0.00	0.00	0.00

Database:	Landmark	Local Co-ordinate Reference:	Well Grizzly 3-32H
Company:	EE3	TVD Reference:	RKB @ 8113.0ft (ENSIGN RIG 12 12' KB)
Project:	SEC.32-T8N-R80W	MD Reference:	RKB @ 8113.0ft (ENSIGN RIG 12 12' KB)
Site:	Grizzly 3-32H PAD Sec.32-T8N-R80W	North Reference:	True
Well:	Grizzly 3-32H	Survey Calculation Method:	Minimum Curvature
Wellbore:	Wellbore #1		
Design:	Plan #2 (12-20-13)		

Planned Survey									
Measured Depth (ft)	Inclination (°)	Azimuth (°)	Vertical Depth (ft)	+N/-S (ft)	+E/-W (ft)	Vertical Section (ft)	Dogleg Rate (°/100ft)	Build Rate (°/100ft)	Turn Rate (°/100ft)
4,700.0	0.00	0.00	4,700.0	0.0	0.0	0.0	0.00	0.00	0.00
4,800.0	0.00	0.00	4,800.0	0.0	0.0	0.0	0.00	0.00	0.00
4,900.0	0.00	0.00	4,900.0	0.0	0.0	0.0	0.00	0.00	0.00
5,000.0	0.00	0.00	5,000.0	0.0	0.0	0.0	0.00	0.00	0.00
5,100.0	0.00	0.00	5,100.0	0.0	0.0	0.0	0.00	0.00	0.00
5,200.0	0.00	0.00	5,200.0	0.0	0.0	0.0	0.00	0.00	0.00
5,300.0	0.00	0.00	5,300.0	0.0	0.0	0.0	0.00	0.00	0.00
5,400.0	0.00	0.00	5,400.0	0.0	0.0	0.0	0.00	0.00	0.00
5,500.0	0.00	0.00	5,500.0	0.0	0.0	0.0	0.00	0.00	0.00
5,600.0	0.00	0.00	5,600.0	0.0	0.0	0.0	0.00	0.00	0.00
5,700.0	0.00	0.00	5,700.0	0.0	0.0	0.0	0.00	0.00	0.00
5,708.0	0.00	0.00	5,708.0	0.0	0.0	0.0	0.00	0.00	0.00
VERT NIOBRARA									
5,800.0	0.00	0.00	5,800.0	0.0	0.0	0.0	0.00	0.00	0.00
5,900.0	0.00	0.00	5,900.0	0.0	0.0	0.0	0.00	0.00	0.00
6,000.0	0.00	0.00	6,000.0	0.0	0.0	0.0	0.00	0.00	0.00
6,031.0	0.00	0.00	6,031.0	0.0	0.0	0.0	0.00	0.00	0.00
SUSSEX									
6,100.0	0.00	0.00	6,100.0	0.0	0.0	0.0	0.00	0.00	0.00
6,200.0	0.00	0.00	6,200.0	0.0	0.0	0.0	0.00	0.00	0.00
6,300.0	0.00	0.00	6,300.0	0.0	0.0	0.0	0.00	0.00	0.00
6,333.0	0.00	0.00	6,333.0	0.0	0.0	0.0	0.00	0.00	0.00
SHANNON									
6,400.0	0.00	0.00	6,400.0	0.0	0.0	0.0	0.00	0.00	0.00
6,500.0	0.00	0.00	6,500.0	0.0	0.0	0.0	0.00	0.00	0.00
6,600.0	0.00	0.00	6,600.0	0.0	0.0	0.0	0.00	0.00	0.00
6,700.0	0.00	0.00	6,700.0	0.0	0.0	0.0	0.00	0.00	0.00
6,800.0	0.00	0.00	6,800.0	0.0	0.0	0.0	0.00	0.00	0.00
6,900.0	0.00	0.00	6,900.0	0.0	0.0	0.0	0.00	0.00	0.00
7,000.0	0.00	0.00	7,000.0	0.0	0.0	0.0	0.00	0.00	0.00
7,100.0	0.00	0.00	7,100.0	0.0	0.0	0.0	0.00	0.00	0.00
7,200.0	0.00	0.00	7,200.0	0.0	0.0	0.0	0.00	0.00	0.00
7,300.0	0.00	0.00	7,300.0	0.0	0.0	0.0	0.00	0.00	0.00
7,400.0	0.00	0.00	7,400.0	0.0	0.0	0.0	0.00	0.00	0.00
7,500.0	0.00	0.00	7,500.0	0.0	0.0	0.0	0.00	0.00	0.00
7,593.6	0.00	0.00	7,593.6	0.0	0.0	0.0	0.00	0.00	0.00
Start Build 12.00									
7,600.0	0.77	203.85	7,600.0	0.0	0.0	0.0	12.00	12.00	0.00
7,700.0	12.77	203.85	7,699.1	-10.8	-4.8	11.8	12.00	12.00	0.00
7,701.9	13.00	203.85	7,701.0	-11.2	-5.0	12.2	12.00	12.00	0.00
NIOBRARA									
7,800.0	24.77	203.85	7,793.6	-40.2	-17.8	43.9	12.00	12.00	0.00
7,900.0	36.77	203.85	7,879.4	-86.9	-38.4	95.0	12.00	12.00	0.00
8,000.0	48.77	203.85	7,952.7	-148.9	-65.8	162.8	12.00	12.00	0.00
8,100.0	60.77	203.85	8,010.2	-223.5	-98.8	244.3	12.00	12.00	0.00
8,200.0	72.77	203.85	8,049.6	-307.4	-135.9	336.1	12.00	12.00	0.00
8,300.0	84.77	203.85	8,069.0	-396.9	-175.5	434.0	12.00	12.00	0.00
8,338.2	89.36	203.85	8,071.0	-431.8	-190.9	472.1	12.00	12.00	0.00
LANDING									
8,347.7	90.50	203.85	8,071.0	-440.5	-194.7	481.6	12.00	12.00	0.00
Start 1.4 hold at 8347.7 MD									
8,349.1	90.50	203.85	8,071.0	-441.8	-195.3	483.0	0.00	0.00	0.00
Start 2291.9 hold at 8349.1 MD - LANDING PT									

Database:	Landmark	Local Co-ordinate Reference:	Well Grizzly 3-32H
Company:	EE3	TVD Reference:	RKB @ 8113.0ft (ENSIGN RIG 12 12' KB)
Project:	SEC.32-T8N-R80W	MD Reference:	RKB @ 8113.0ft (ENSIGN RIG 12 12' KB)
Site:	Grizzly 3-32H PAD Sec.32-T8N-R80W	North Reference:	True
Well:	Grizzly 3-32H	Survey Calculation Method:	Minimum Curvature
Wellbore:	Wellbore #1		
Design:	Plan #2 (12-20-13)		

Planned Survey									
Measured Depth (ft)	Inclination (°)	Azimuth (°)	Vertical Depth (ft)	+N/-S (ft)	+E/-W (ft)	Vertical Section (ft)	Dogleg Rate (°/100ft)	Build Rate (°/100ft)	Turn Rate (°/100ft)
8,400.0	90.50	203.85	8,070.6	-488.3	-215.9	533.9	0.00	0.00	0.00
8,500.0	90.50	203.85	8,069.7	-579.8	-256.3	633.9	0.00	0.00	0.00
8,600.0	90.50	203.85	8,068.8	-671.2	-296.7	733.9	0.00	0.00	0.00
8,700.0	90.50	203.85	8,067.9	-762.7	-337.2	833.9	0.00	0.00	0.00
8,800.0	90.50	203.85	8,067.1	-854.1	-377.6	933.9	0.00	0.00	0.00
8,900.0	90.50	203.85	8,066.2	-945.6	-418.0	1,033.9	0.00	0.00	0.00
9,000.0	90.50	203.85	8,065.3	-1,037.1	-458.5	1,133.9	0.00	0.00	0.00
9,100.0	90.50	203.85	8,064.4	-1,128.5	-498.9	1,233.9	0.00	0.00	0.00
9,200.0	90.50	203.85	8,063.6	-1,220.0	-539.3	1,333.9	0.00	0.00	0.00
9,300.0	90.50	203.85	8,062.7	-1,311.4	-579.8	1,433.9	0.00	0.00	0.00
9,400.0	90.50	203.85	8,061.8	-1,402.9	-620.2	1,533.9	0.00	0.00	0.00
9,500.0	90.50	203.85	8,061.0	-1,494.3	-660.6	1,633.9	0.00	0.00	0.00
9,600.0	90.50	203.85	8,060.1	-1,585.8	-701.1	1,733.9	0.00	0.00	0.00
9,700.0	90.50	203.85	8,059.2	-1,677.3	-741.5	1,833.8	0.00	0.00	0.00
9,800.0	90.50	203.85	8,058.3	-1,768.7	-781.9	1,933.8	0.00	0.00	0.00
9,900.0	90.50	203.85	8,057.5	-1,860.2	-822.4	2,033.8	0.00	0.00	0.00
10,000.0	90.50	203.85	8,056.6	-1,951.6	-862.8	2,133.8	0.00	0.00	0.00
10,100.0	90.50	203.85	8,055.7	-2,043.1	-903.2	2,233.8	0.00	0.00	0.00
10,200.0	90.50	203.85	8,054.8	-2,134.5	-943.7	2,333.8	0.00	0.00	0.00
10,300.0	90.50	203.85	8,054.0	-2,226.0	-984.1	2,433.8	0.00	0.00	0.00
10,400.0	90.50	203.85	8,053.1	-2,317.5	-1,024.5	2,533.8	0.00	0.00	0.00
10,500.0	90.50	203.85	8,052.2	-2,408.9	-1,065.0	2,633.8	0.00	0.00	0.00
10,600.0	90.50	203.85	8,051.4	-2,500.4	-1,105.4	2,733.8	0.00	0.00	0.00
10,641.0	90.50	203.85	8,051.0	-2,537.8	-1,122.0	2,774.8	0.00	0.00	0.00
Start DLS 3.18 TFO 179.84									
10,700.0	88.62	203.86	8,051.5	-2,591.8	-1,145.8	2,833.8	3.18	-3.18	0.01
10,750.6	87.01	203.86	8,053.4	-2,638.0	-1,166.3	2,884.3	3.18	-3.18	0.01
Start 1451.6 hold at 10750.6 MD									
10,800.0	87.01	203.86	8,056.0	-2,683.2	-1,186.2	2,933.7	0.00	0.00	0.00
10,900.0	87.01	203.86	8,061.2	-2,774.5	-1,226.6	3,033.6	0.00	0.00	0.00
11,000.0	87.01	203.86	8,066.4	-2,865.8	-1,267.0	3,133.4	0.00	0.00	0.00
11,100.0	87.01	203.86	8,071.6	-2,957.2	-1,307.4	3,233.3	0.00	0.00	0.00
11,200.0	87.01	203.86	8,076.8	-3,048.5	-1,347.8	3,333.2	0.00	0.00	0.00
11,300.0	87.01	203.86	8,082.0	-3,139.8	-1,388.2	3,433.0	0.00	0.00	0.00
11,400.0	87.01	203.86	8,087.2	-3,231.2	-1,428.6	3,532.9	0.00	0.00	0.00
11,500.0	87.01	203.86	8,092.4	-3,322.5	-1,469.0	3,632.8	0.00	0.00	0.00
11,600.0	87.01	203.86	8,097.6	-3,413.8	-1,509.4	3,732.6	0.00	0.00	0.00
11,700.0	87.01	203.86	8,102.8	-3,505.1	-1,549.8	3,832.5	0.00	0.00	0.00
11,800.0	87.01	203.86	8,108.0	-3,596.5	-1,590.2	3,932.3	0.00	0.00	0.00
11,900.0	87.01	203.86	8,113.3	-3,687.8	-1,630.6	4,032.2	0.00	0.00	0.00
12,000.0	87.01	203.86	8,118.5	-3,779.1	-1,671.0	4,132.1	0.00	0.00	0.00
12,100.0	87.01	203.86	8,123.7	-3,870.5	-1,711.4	4,231.9	0.00	0.00	0.00
12,200.0	87.01	203.86	8,128.9	-3,961.8	-1,751.8	4,331.8	0.00	0.00	0.00
12,202.2	87.01	203.86	8,129.0	-3,963.8	-1,752.7	4,334.0	0.00	0.00	0.00
TD at 12202.2 - BHL 600'FSL & 600'FWL									

Database:	Landmark	Local Co-ordinate Reference:	Well Grizzly 3-32H
Company:	EE3	TVD Reference:	RKB @ 8113.0ft (ENSIGN RIG 12 12' KB)
Project:	SEC.32-T8N-R80W	MD Reference:	RKB @ 8113.0ft (ENSIGN RIG 12 12' KB)
Site:	Grizzly 3-32H PAD Sec.32-T8N-R80W	North Reference:	True
Well:	Grizzly 3-32H	Survey Calculation Method:	Minimum Curvature
Wellbore:	Wellbore #1		
Design:	Plan #2 (12-20-13)		

Targets									
Target Name	- hit/miss target	Dip Angle (°)	Dip Dir. (°)	TVD (ft)	+N/-S (ft)	+E/-W (ft)	Northing (ft)	Easting (ft)	
	- Shape								Latitude Longitude
LANDING PT	- plan hits target center	0.00	0.00	8,071.0	-441.8	-195.3	1,472,333.85	2,750,590.82	40.626484 -106.398529
	- Point								
BHL 600'FSL & 600'F'	- plan misses target center by 22.0ft at 12202.2ft MD (8129.0 TVD, -3963.8 N, -1752.7 E)	0.00	0.00	8,151.0	-3,963.8	-1,752.7	1,468,827.85	2,748,997.92	40.616817 -106.404138
	- Point								
SHL 709'FNL & 2404'	- plan hits target center	0.00	0.00	1.0	0.0	0.0	1,472,773.61	2,750,790.58	40.627697 -106.397825
	- Point								

Formations						
Measured Depth (ft)	Vertical Depth (ft)	Name	Lithology	Dip (°)	Dip Direction (°)	
2,751.0	2,751.0	MIDCOAL		0.00		
3,531.0	3,531.0	SUDDETH COAL		0.00		
5,708.0	5,708.0	VERT NIOBRARA		0.00		
6,031.0	6,031.0	SUSSEX		0.00		
6,333.0	6,333.0	SHANNON		0.00		
7,701.9	7,701.0	NIOBRARA		0.00		
8,338.2	8,071.0	LANDING		0.00		
	8,227.0	CALISLE		0.00		

Plan Annotations				
Measured Depth (ft)	Vertical Depth (ft)	Local Coordinates		Comment
		+N/-S (ft)	+E/-W (ft)	
7,593.6	7,593.6	0.0	0.0	Start Build 12.00
8,347.7	8,071.0	-440.5	-194.7	Start 1.4 hold at 8347.7 MD
8,349.1	8,071.0	-441.8	-195.3	Start 2291.9 hold at 8349.1 MD
10,641.0	8,051.0	-2,537.8	-1,122.0	Start DLS 3.18 TFO 179.84
10,750.6	8,053.4	-2,638.0	-1,166.3	Start 1451.6 hold at 10750.6 MD
12,202.2	8,129.0	-3,963.8	-1,752.7	TD at 12202.2