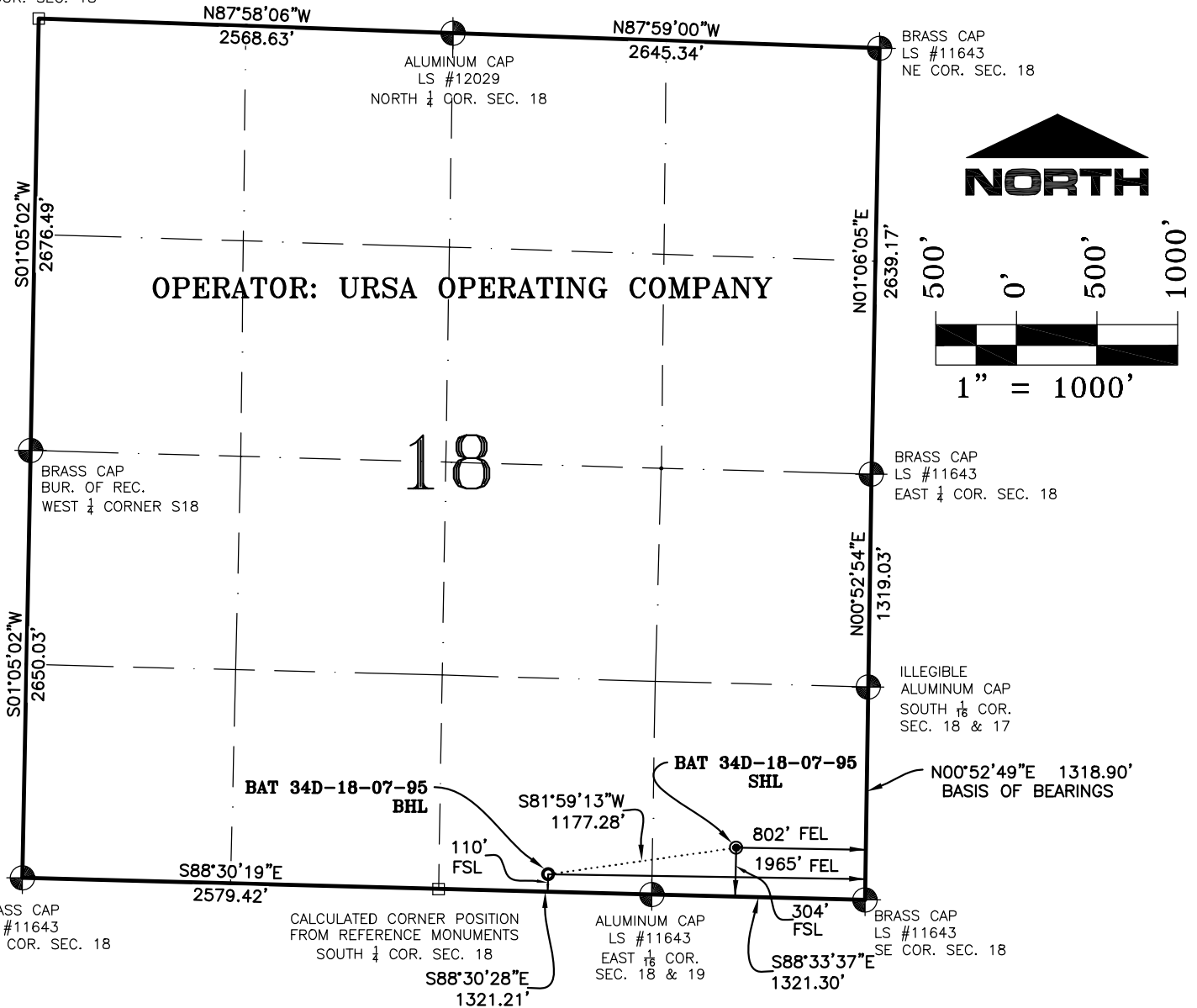


SECTION 18, T7S, R95W, 6th P.M.

CALCULATED POSITION
NW COR. SEC. 18



NOTES:

1. GEODETIC POSITIONS ARE SHOWN IN DECIMAL DEGREES.
2. UNITS OF LINEAR MEASUREMENT: U.S. SURVEY FOOT
3. ELEVATIONS ARE BASED ON GPS OBSERVATIONS USING GEOID 03, NAVD88.
4. ALL SURFACE (SHL) AND BOTTOM (BHL) HOLE LOCATIONS ARE MEASURED AT 90° ANGLES FROM SECTION LINES.
5. BASIS OF BEARING: N00°52'49\"E BETWEEN FOUND MONUMENTS AS SHOWN HEREON.
6. EXISTING GROUND ELEVATION: 5441'. PROPOSED PAD ELEVATION: 5441.2'.
7. GPS OPERATOR: KYLE TESKY OBSERVED AN AVERAGE PDOP OF ≤ 3.0 FOR ALL SURVEY MEASUREMENTS DEPICTED ON THIS AND SUBSEQUENT SHEETS. ALL GPS OBSERVATIONS ARE IN COMPLIANCE WITH COGCC RULE NO. 215
8. SURFACE USE: AGRICULTURAL LANDS
9. USGS QUAD MAP: PARACHUTE
10. ALL PLANNED SURFACE AND BOTTOM HOLE LOCATIONS HAVE BEEN PROVIDED BY THE CLIENT.

SURVEYORS STATEMENT:

I, ROBERT E. BRANDEBERRY, BEING A REGISTERED LAND SURVEYOR IN THE STATE OF COLORADO, HEREBY CERTIFY THAT THIS PLAT REPRESENTS A SURVEY PERFORMED BY ME OR UNDER MY DIRECT SUPERVISION ON SEPTEMBER 17, 2010 AND IS TRUE TO THE BEST OF MY KNOWLEDGE AND BELIEF.

Robert E. Brandeberry
38388
ROBERT E. BRANDEBERRY
COLORADO LS 38388
DEC 2013

WELL No.	SECTION LINES TIES		NAD 83		NAD 27	
BAT 34D-18-07-95	FOOTAGES	FOOTAGES	LATITUDE	LONGITUDE	LATITUDE	LONGITUDE
SURFACE HOLE (SHL)	304' FSL	802' FEL	39.431259°	-108.033170°	39.431281°	-108.032540°
BOTTOM HOLE (BHL)	110' FSL	1965' FEL	39.430720°	-108.037278°	39.430742°	-108.036648°



SGM
118 West Sixth Street, Suite 200
Glenwood Springs, CO 81601
970.945.1004 www.sgm-inc.com

Scale: 1" = 1000'

Sheet 1 of 1

WLP

WELL LOCATION PLAT - URSA BAT 34D-18-07-95

BHL LOCATED IN SW1/4SE1/4 SECTION 18, T. 7 S., R 95 W., 6TH P.M., GARFIELD COUNTY, CO

Job# 2013-413.001 Date: 12.12.13 By: REB File: MonRidUrsa