



Cathedral Energy Services
1949 Pyrite Rd Casper Wy 82601

135390

2":100' - MD
9/5/2013 10:06:15 PM

Oper. Company: Encana Oil & Gas
Country: US
State / Province: CO
County / Parish: Weld
Started: 08/27/2013 05:03 PM

API/UWI: 051233743500
Field: DJ Basin
Well: Marcus State 3C-36H
Rig: Ensign 135
Ended: 09/05/2013 11:00 AM

Personnel

Day Hand: Ken Wagoner
Night Hand: Corey Horkan
Comp. Emp: Cathedral Energy Service

Location

Latitude: 40.088280
Longitude: -104.730070
Elev. GL: 5039.0
Elev. DF: 5052
Elev. KB: 5052

Hole Data

Size	From	To
8.75	1232	7707
6.13	7707	12060

Casing Data

Size	From	To
9.58	0	1228
7.0	0	7691

Bit Sizes

Size	From	To
8.75	1232	7707
6.13	7707	12060

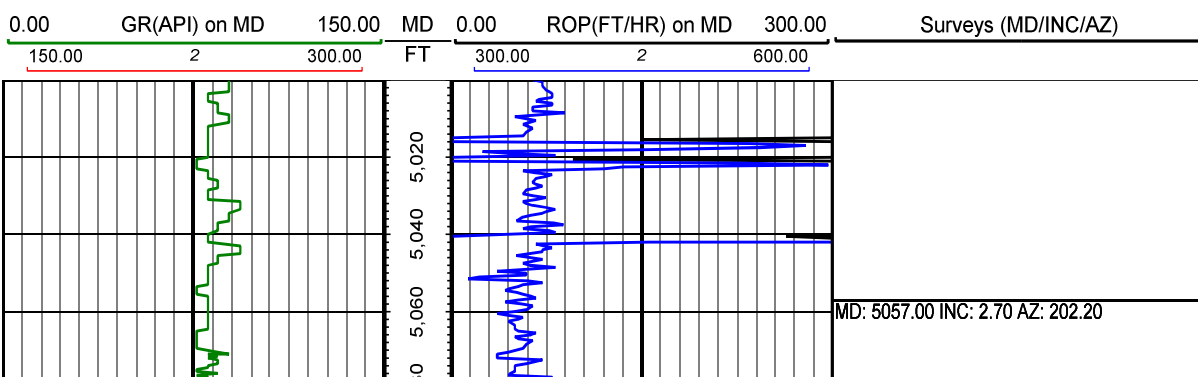
Mud Data

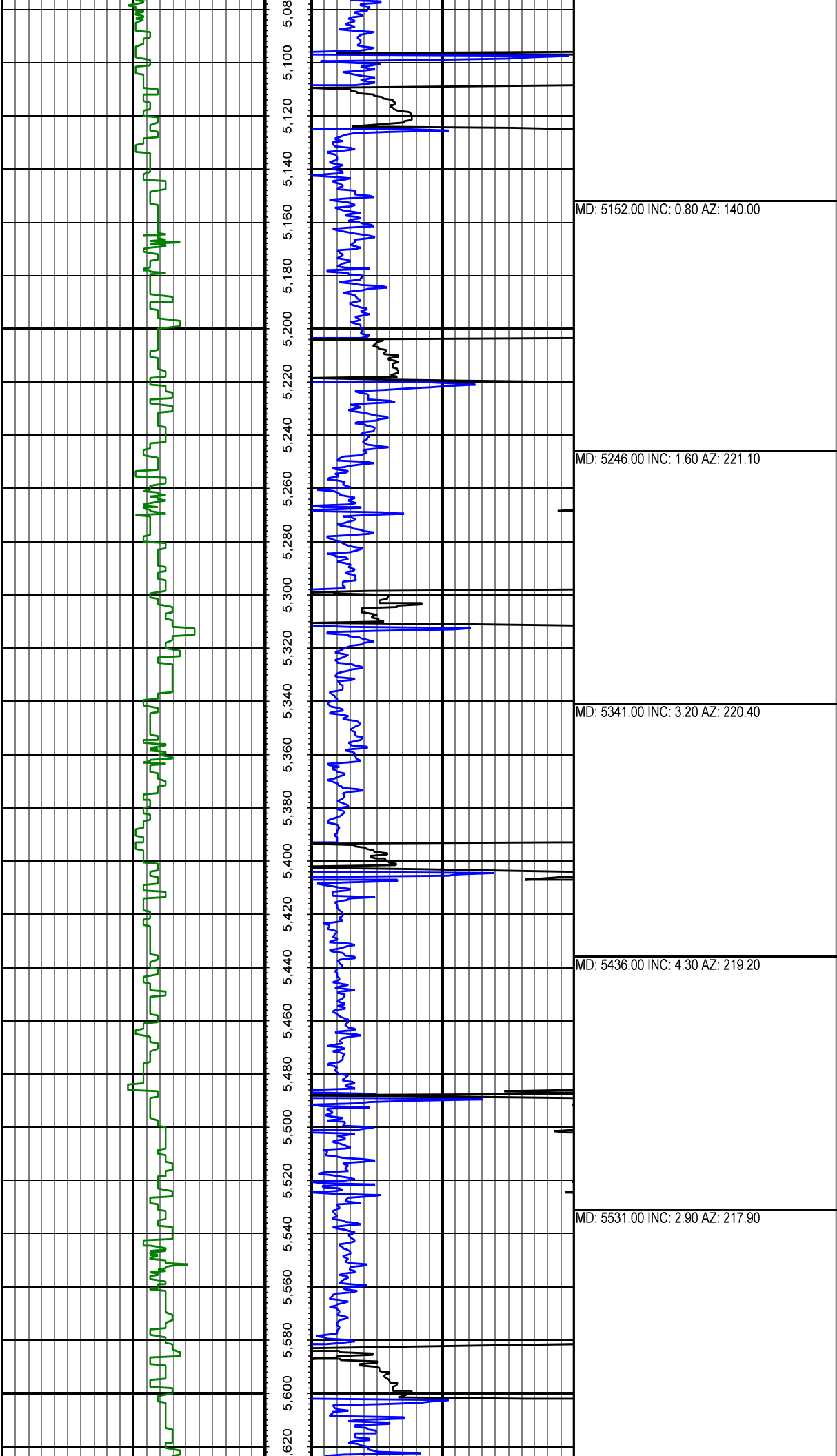
Type	Weight	Density	Viscosity	Rm	Rmf	Rmc	From	To
LSND	9.70	9.70	36				1232	7707
LSND	10	10	36				7707	12060

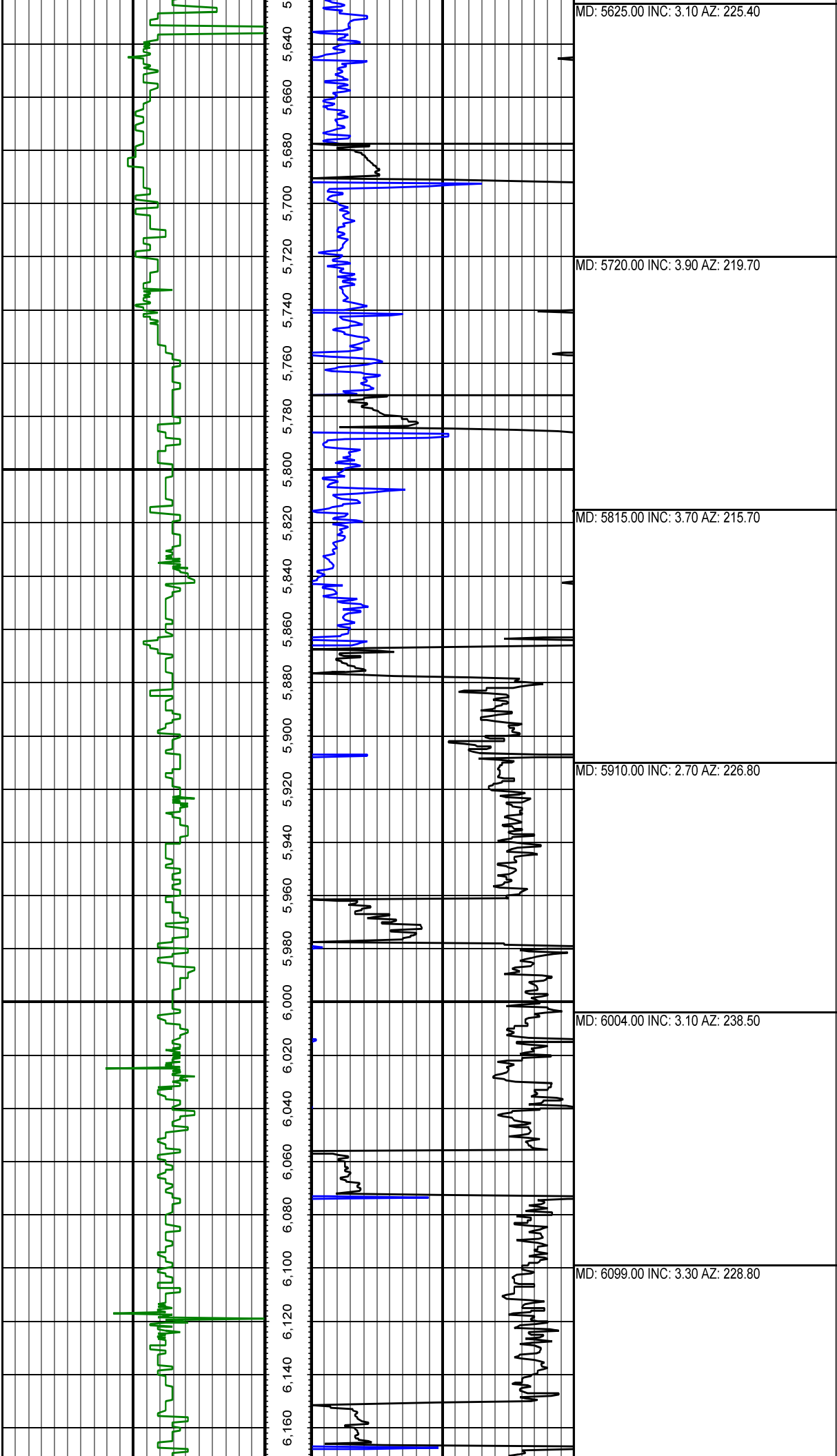
Tool Run Data

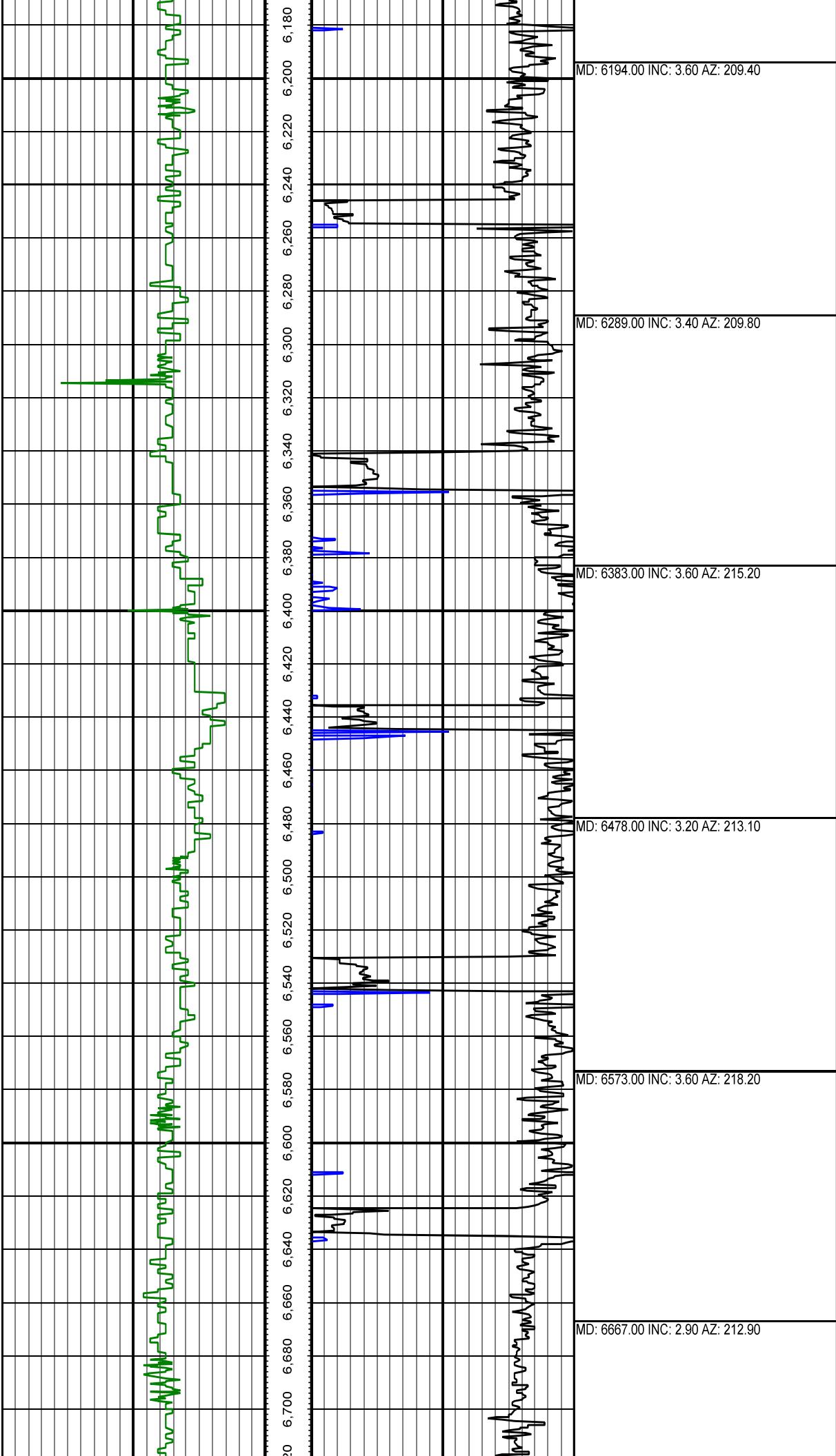
Serial Number	Gamma Offset	Resist. Offset	Start Time	Start Depth	End Time	End Depth
1125	38.79	0	8/26/2013 1:00:05 PM	1232	8/30/2013 2:30:05 PM	5867
1279	37.95	0	8/30/2013 4:30:33 PM	5867	9/1/2013 11:00:33 AM	7707

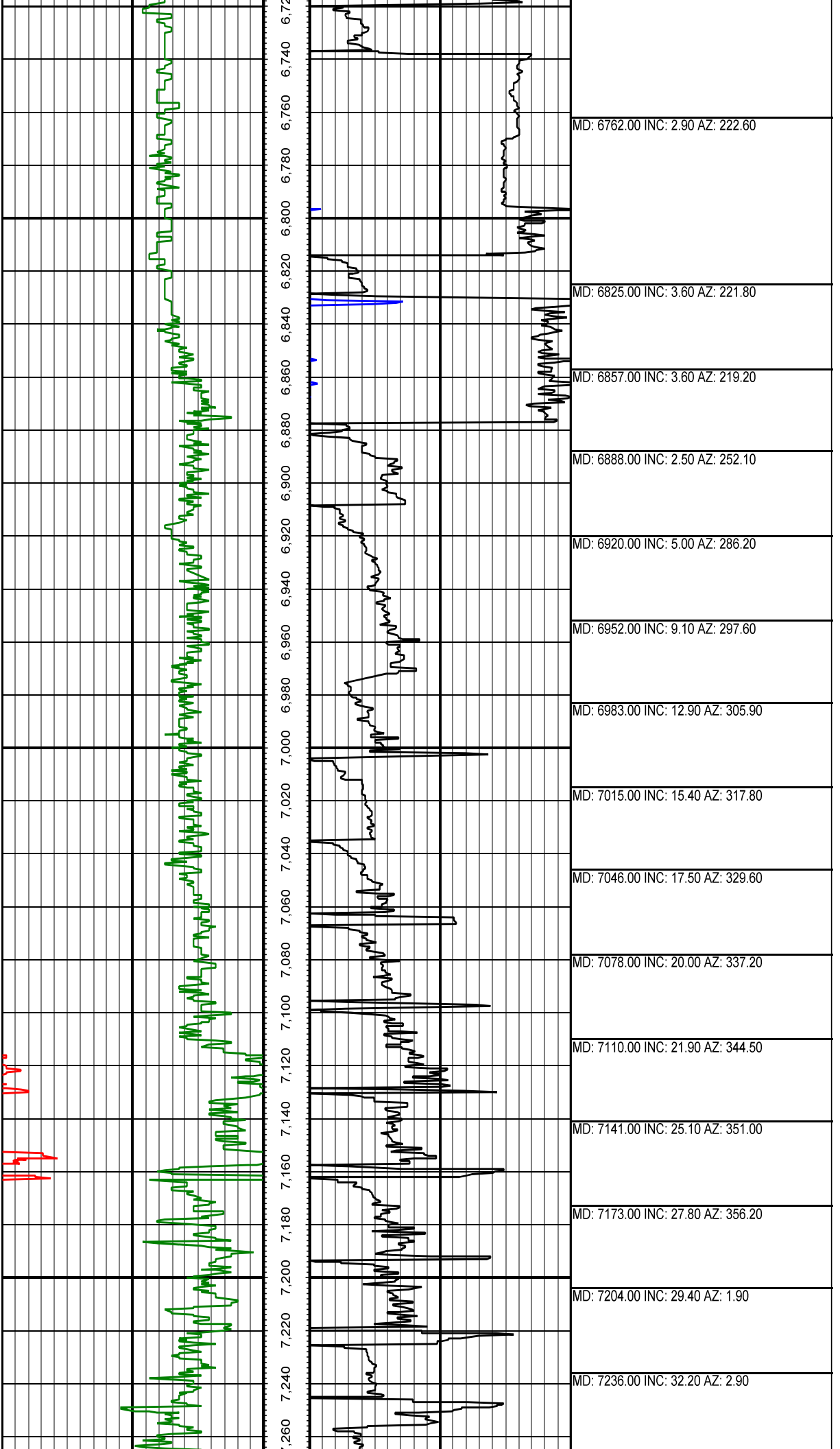
All interpretations are opinions based on inferences from electrical or other measurements and we cannot and do not guarantee the accuracy or correctness of any interpretation, and we shall not except in the case of gross or willful negligence on our part, be liable or responsible for any loss, cost damages or expenses incurred or sustained by anyone resulting from an interpretation made by any of our officers, agents, or employees.

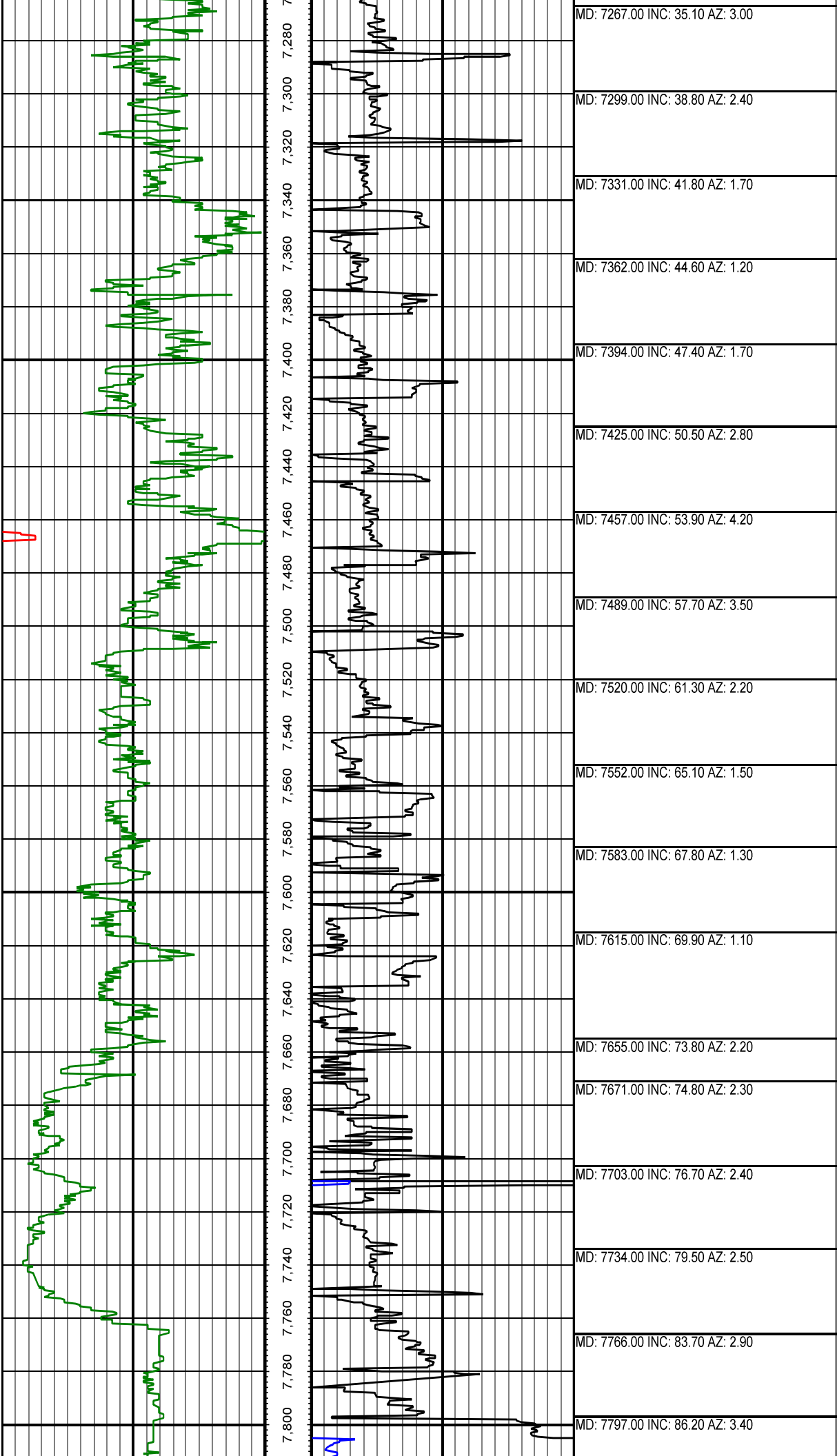


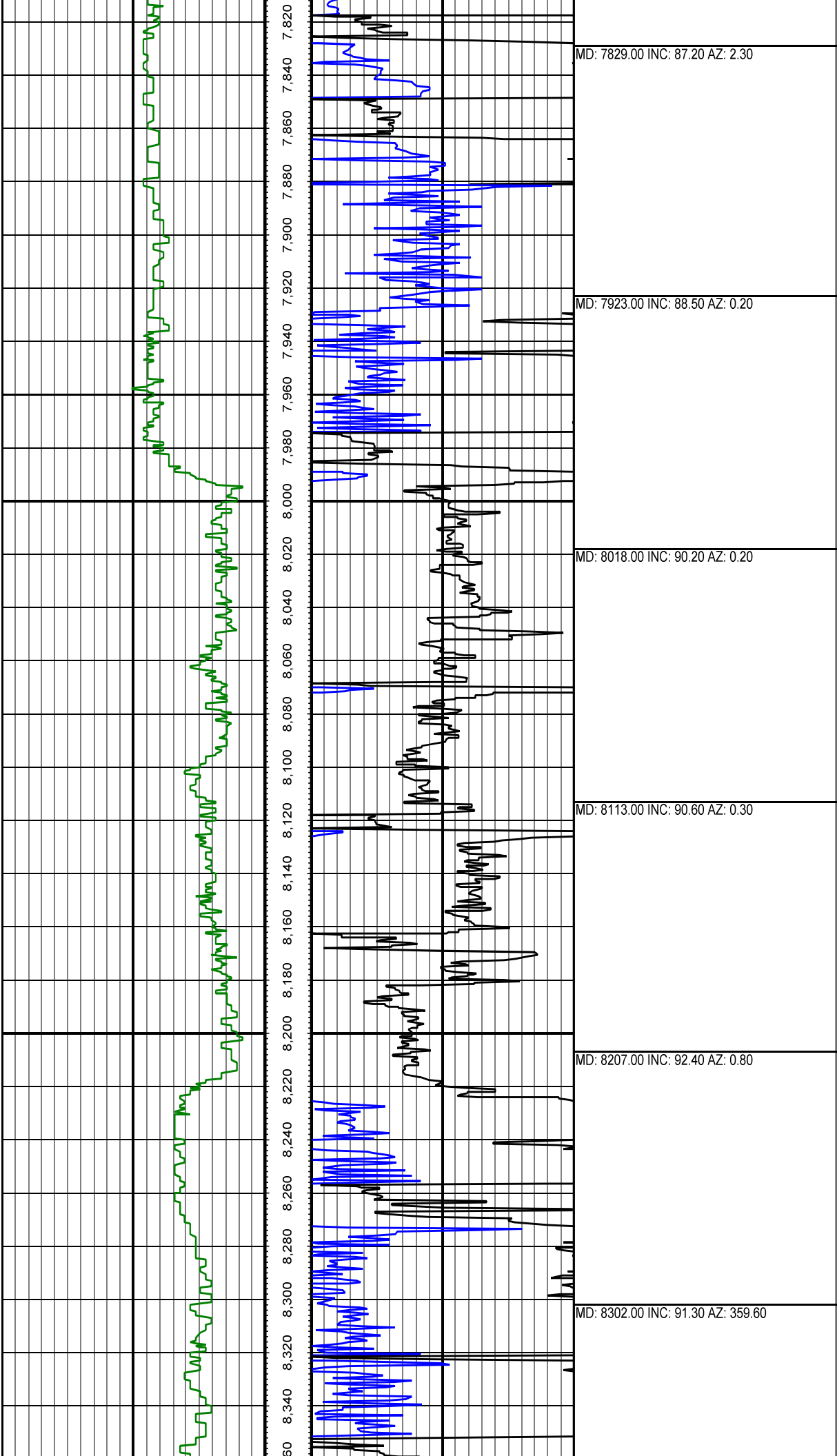


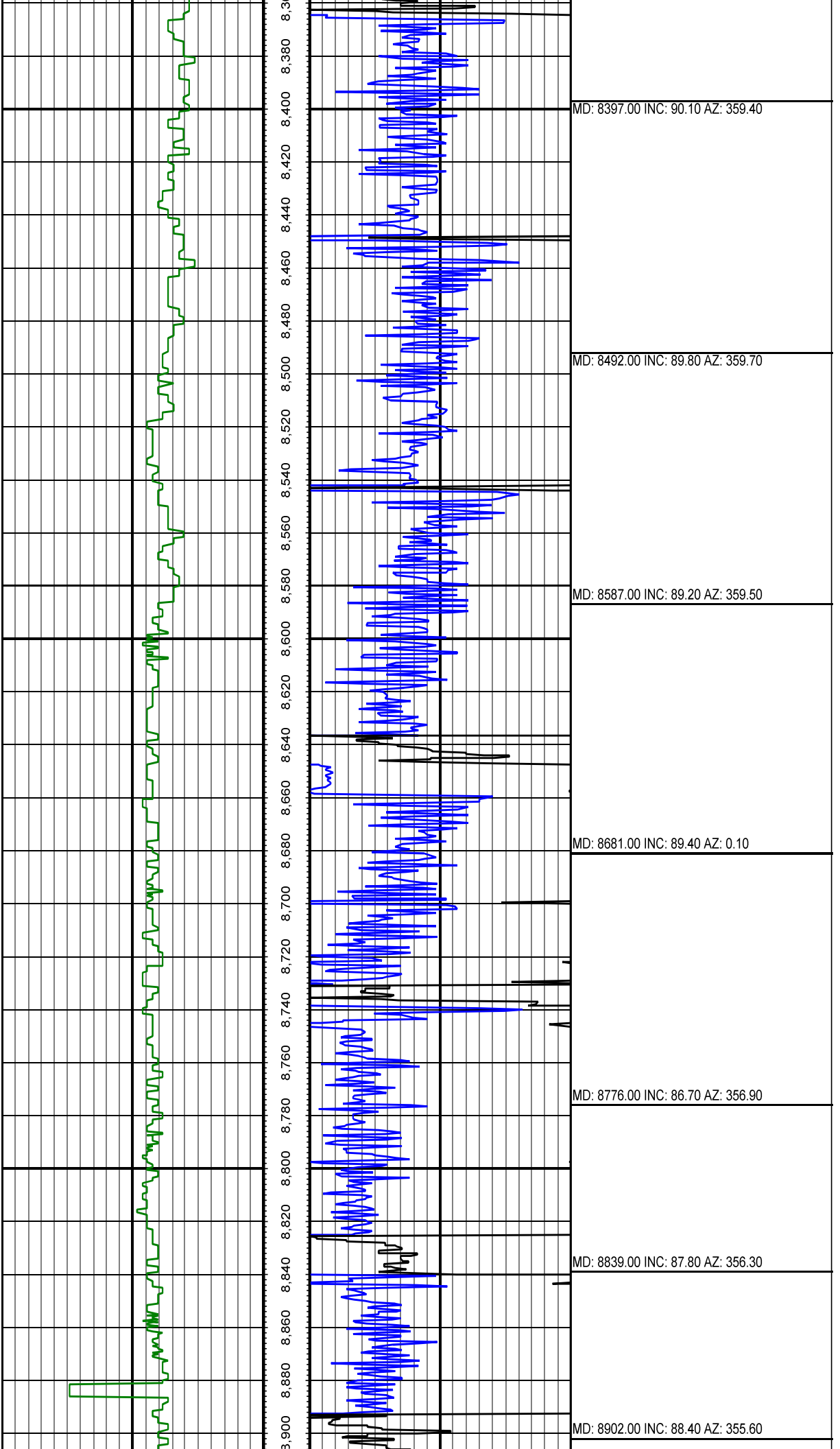


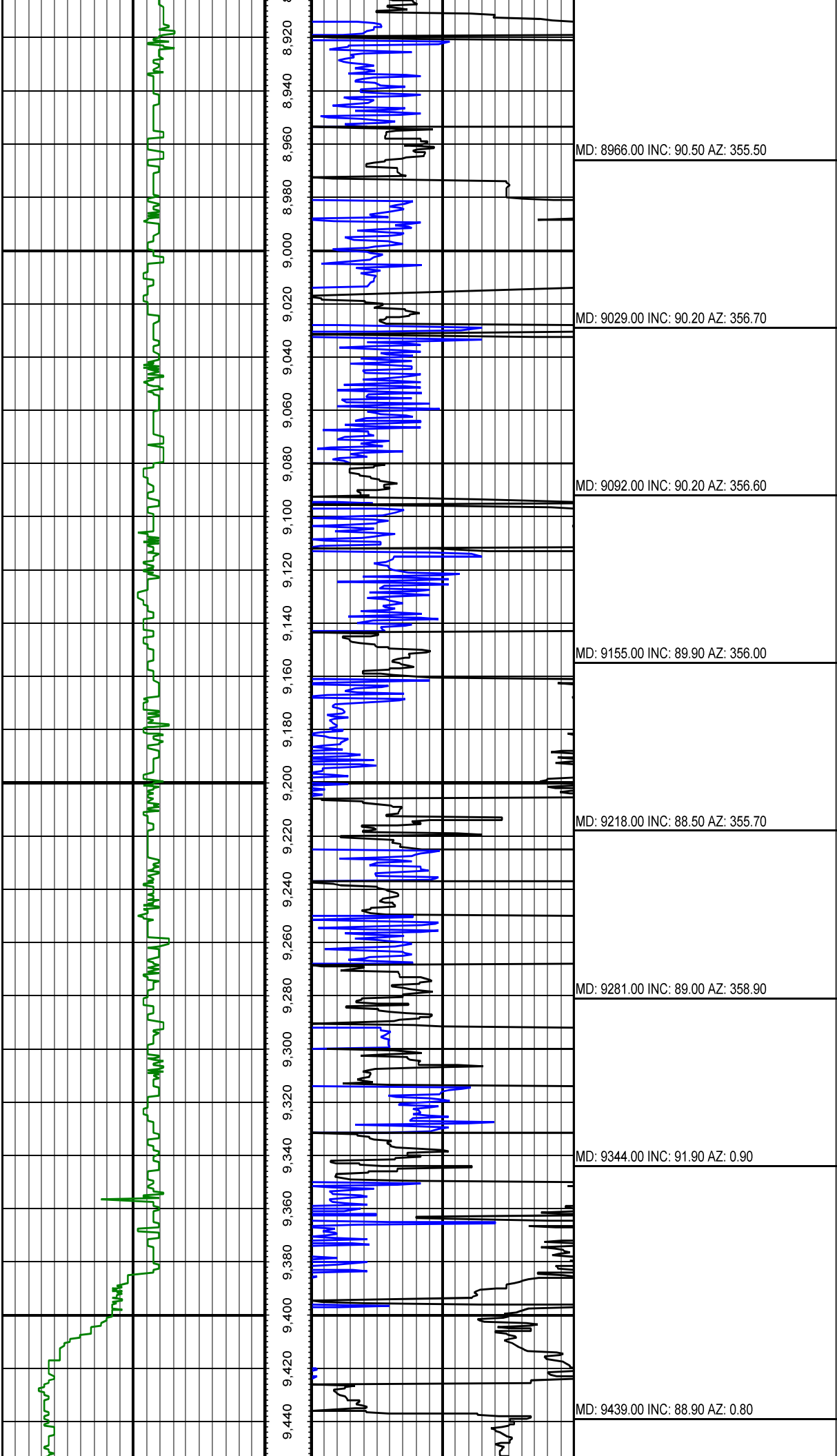


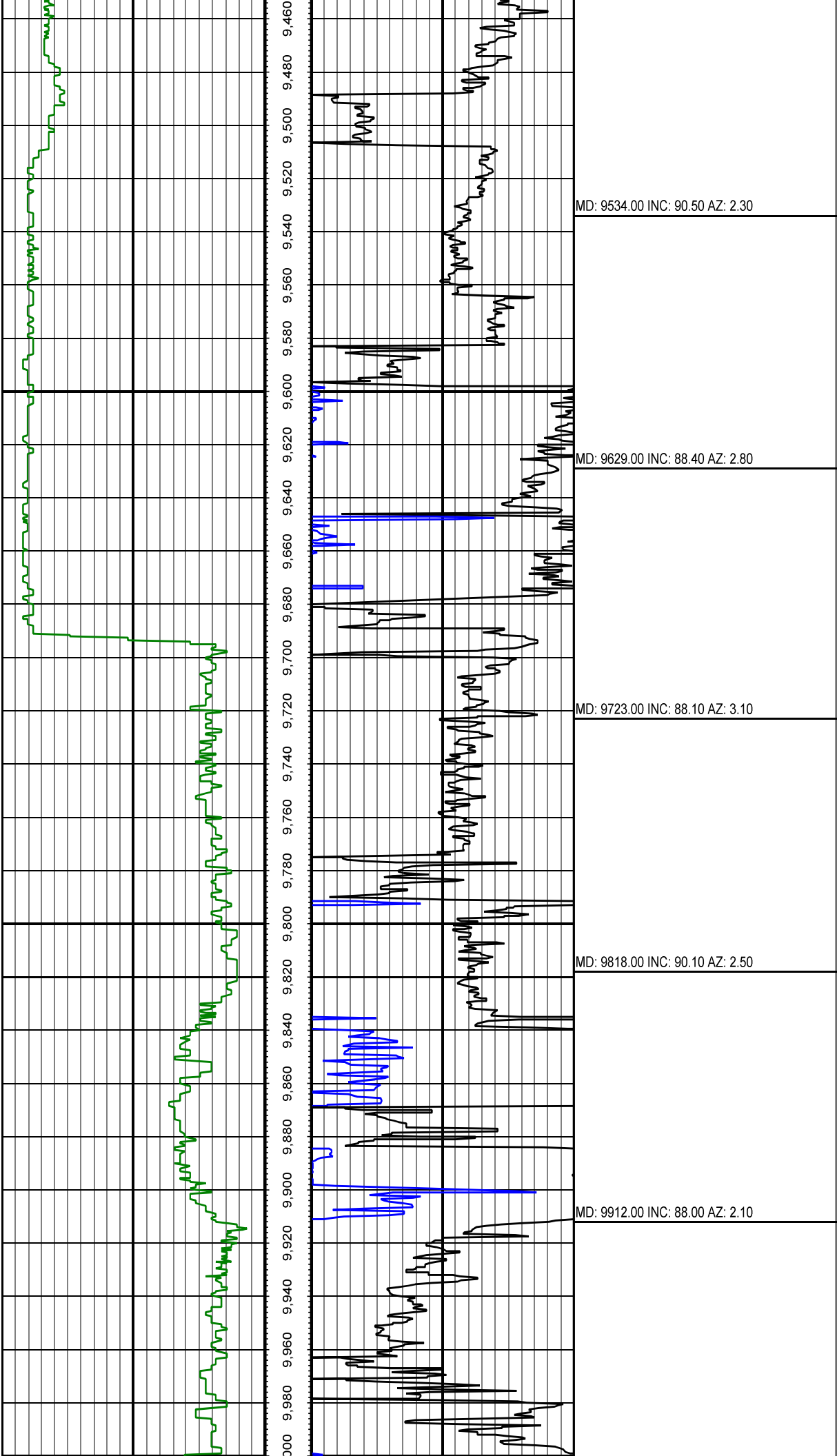


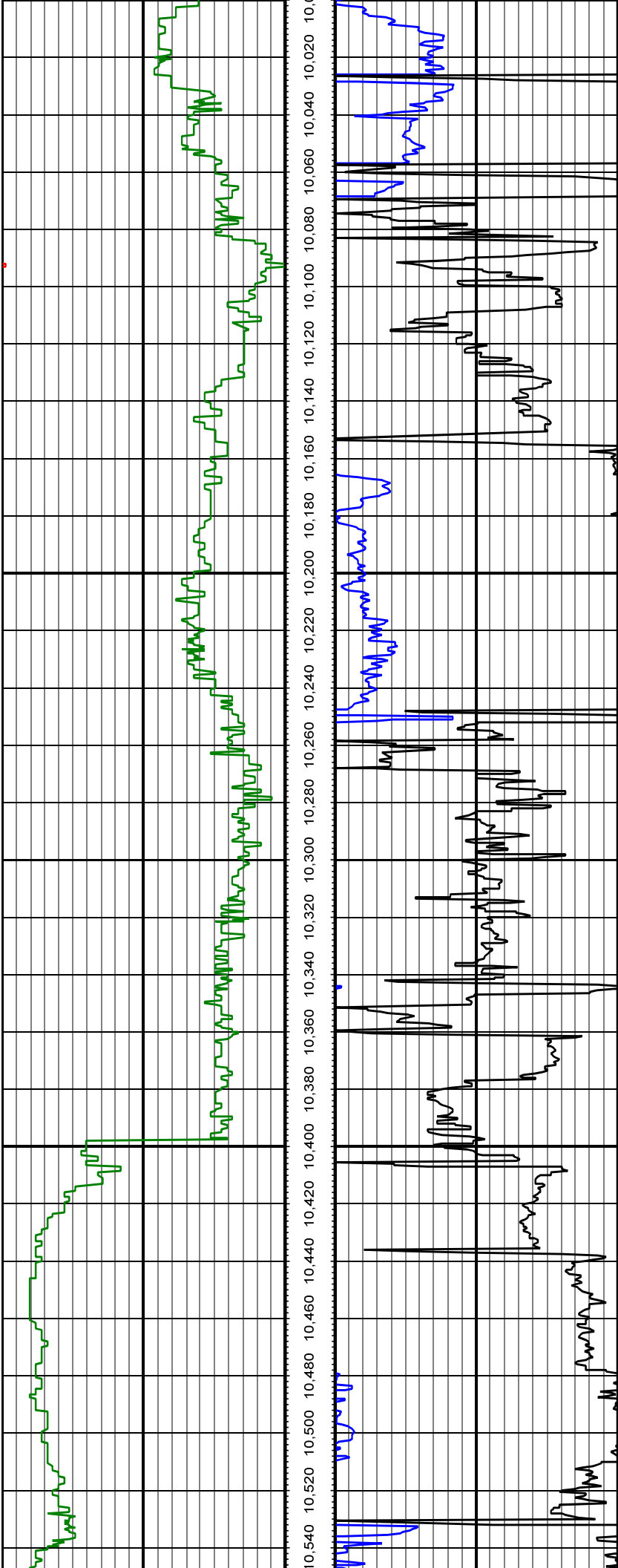












MD: 10007.00 INC: 88.90 AZ: 2.30

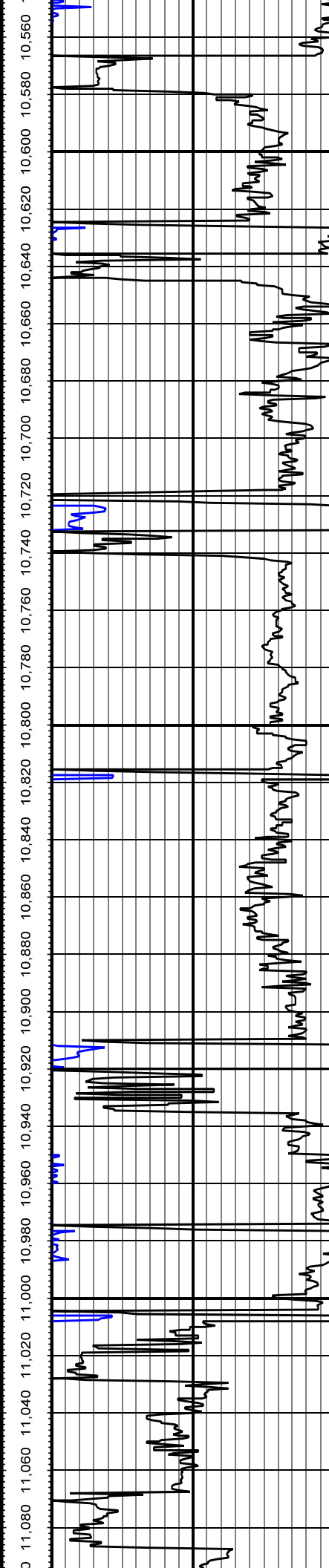
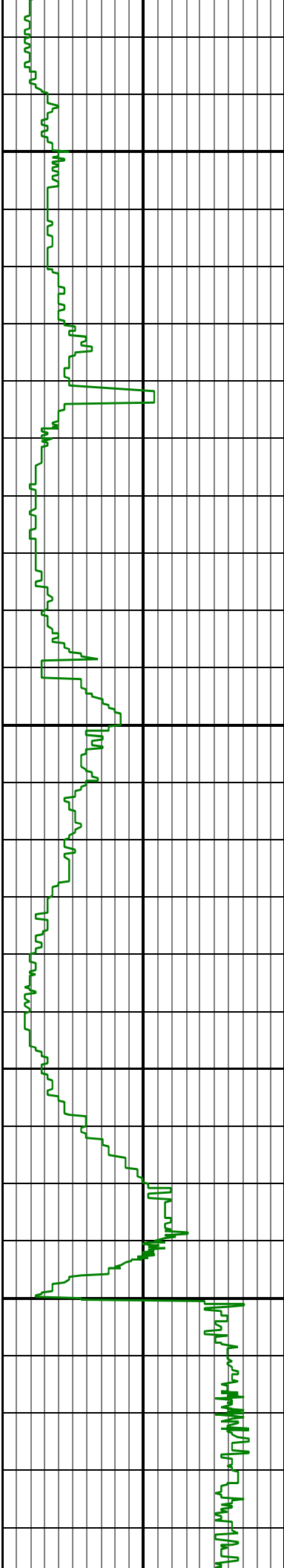
MD: 10102.00 INC: 89.90 AZ: 2.00

MD: 10197.00 INC: 90.10 AZ: 2.30

MD: 10291.00 INC: 90.20 AZ: 1.30

MD: 10386.00 INC: 91.00 AZ: 1.00

MD: 10480.00 INC: 90.70 AZ: 0.70



MD: 10575.00 INC: 89.30 AZ: 359.70

MD: 10670.00 INC: 89.00 AZ: 0.60

MD: 10764.00 INC: 88.50 AZ: 0.10

MD: 10859.00 INC: 87.60 AZ: 0.00

MD: 10954.00 INC: 87.40 AZ: 359.50

MD: 11049.00 INC: 87.80 AZ: 359.50

