

</

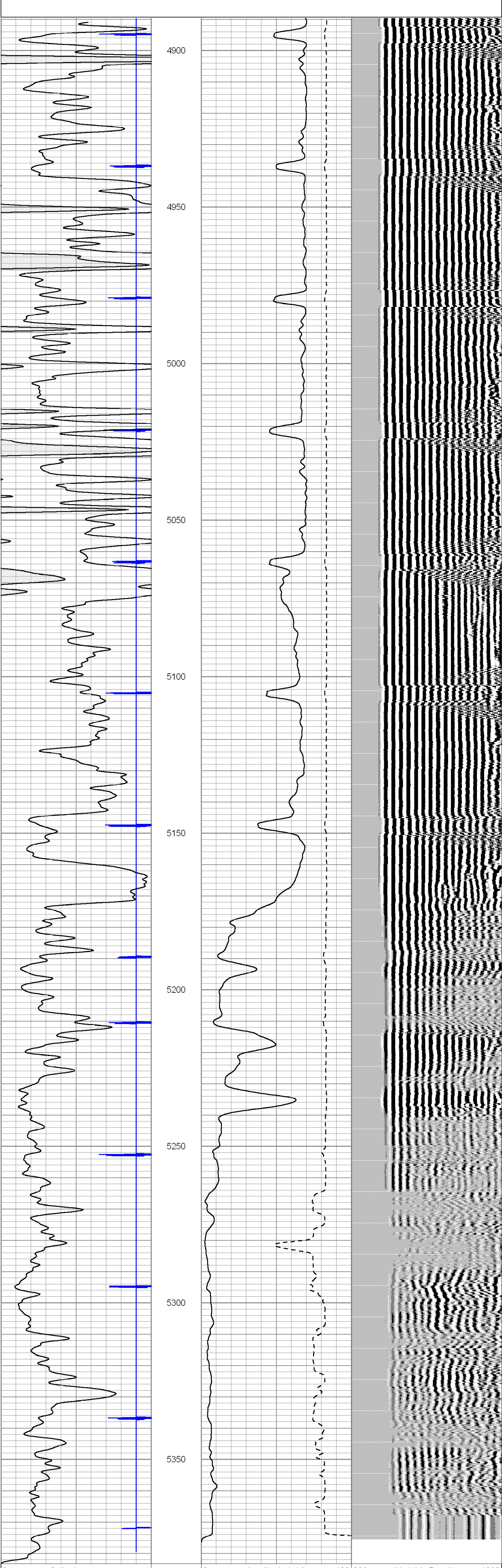
<<< Fold Here >>>

All interpretations are opinions based on inferences from electrical or other measurements and we cannot and do not guarantee the accuracy or correctness of any interpretation, and we shall not, except in the case of gross or willful negligence on our part, be liable or responsible for any loss, costs, damages, or expenses incurred or sustained by anyone resulting from any interpretation made by any of our officers, agents or employees. These interpretations are also subject to our general terms and conditions set out in our current Price Schedule.

Comments	

Database File:	betty.db
Dataset Pathname:	pass2
Presentation Format:	cbldlg
Dataset Creation:	Wed Oct 16 16:11:57 2013 by Log Std Casedhole 07081
Charted by:	Depth in Feet scaled 1:240

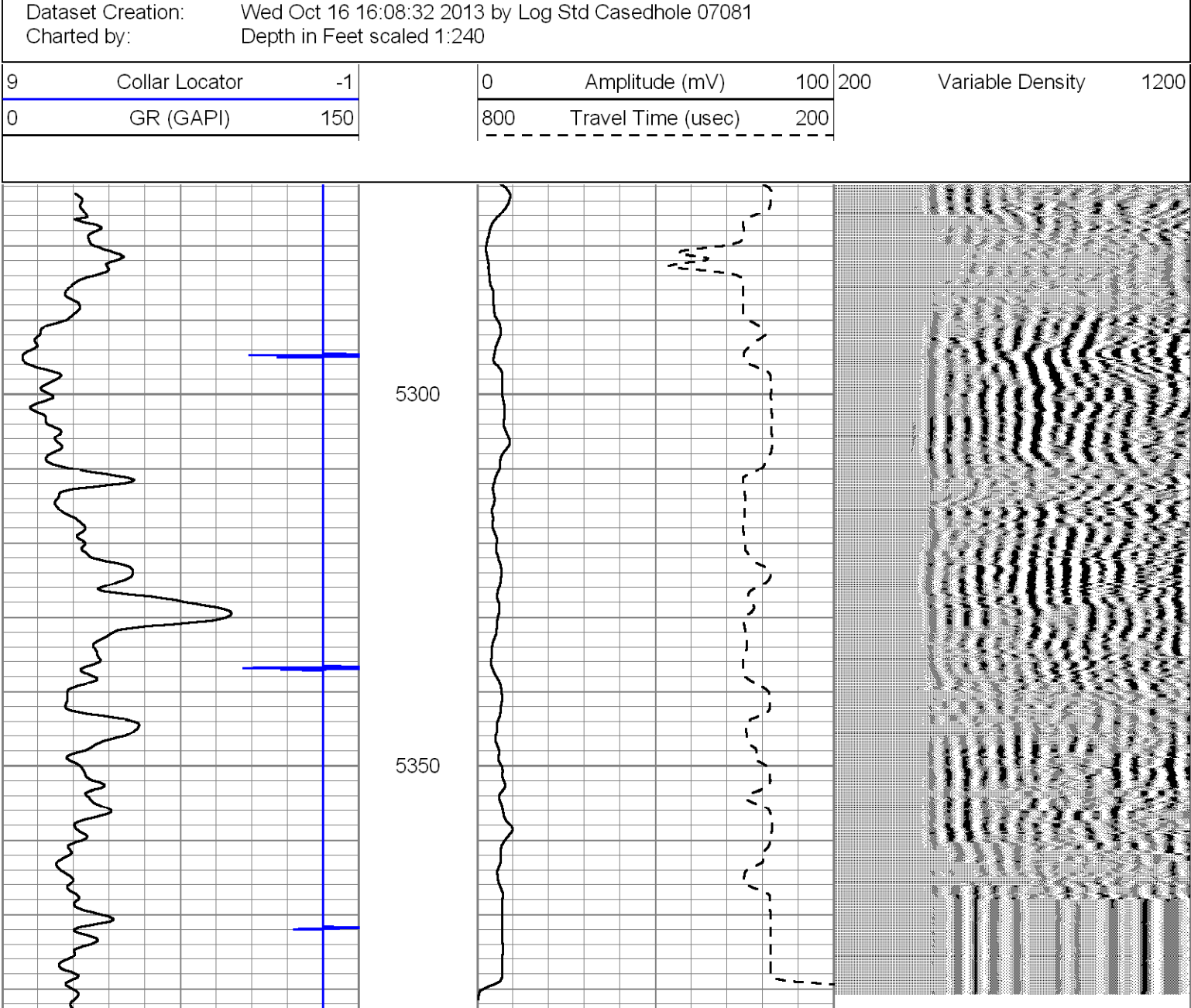
9	Collar Locator	-1	0	Amplitude (mV)	100	200	Variable Density	1200
0	GR (GAPI)	150	800	Travel Time (usec)	200			



9	Collar Locator	-1	0	Amplitude (mV)	100	200	Variable Density	1200
0	GR (GAPI)	150	800	Travel Time (usec)	200			

Database File:	betty.db
Dataset Pathname:	pass1
Presentation Format:	cbldlg
Dataset Creation:	Wed Oct 16 16:08:32 2013 by Log Std Casedhole 07081
Charted by:	Depth in Feet scaled 1:240

9	Collar Locator	-1	0	Amplitude (mV)	100	200	Variable Density	1200
0	GR (GAPI)	150	800	Travel Time (usec)	200			



9	Collar Locator	-1	0	Amplitude (mV)	100	200	Variable Density	1200
0	GR (GAPI)	150	800	Travel Time (usec)	200			

0	GR (GAPI)	150	800	Travel Time (usec)	200
Calibration Report					
Database File:	betty.db				
Dataset Pathname:	pass2				
Dataset Creation:	Wed Oct 16 16:11:57 2013 by Log Std Casedhole 07081				
Gamma Ray Calibration Report					
Serial Number:	061120GR				
Tool Model:	PROBE				
Performed:	Wed Oct 16 16:11:21 2013				
Calibrator Value:	1.0	GAPI			
Background Reading:	0.0	cps			
Calibrator Reading:	1.0	cps			
Sensitivity:	0.9000	GAPI/cps			
Cement Bond Log Calibration Report					
Serial Number:	5.5dig040201				
Tool Model:	Probe275Digital				
Performed:	Wed Oct 16 16:02:12 2013				
Depth:	0	ft			
Casing Diameter:	5.5	in			
	3' Spacing	5' Spacing			
Signal Zero:	0.5	0	mV		
Calibrated Amplitude:	71.921	71.921	mV		
Reading at Signal Zero:	0.00385742	0.00810547	V		
Reading in Free Pipe:	1.94258	1.87747	V		