

**ANADARKO PETROLEUM CORP - EBUS
DO NOT MAIL - PO BOX 4995
THE WOODLANDS, Texas**

D&C Farms 35N-33HZ

MAJORS 42

Post Job Summary **Cement Surface Casing**

Prepared for:
Date Prepared: 12/10/2013
Version: 1

Service Supervisor: BULINSKI, MATTHEW

Submitted by: FINNEY, SEAN

HALLIBURTON

HALLIBURTON

Wellbore Geometry

Job Tubulars					MD		Shoe Joint Length ft
Type	Description	Size in	ID in	Wt lbm/ft	Top ft	Bottom ft	
Casing	9 5/8" Surface Casing	9.63	8.921	36.00	0.00	921.00	42.00
Open Hole Section	13 1/2" Open Hole Section		13.500		0.00	921.00	0.00

HALLIBURTON

Pumping Schedule

Stage / Plug #	Fluid #	Fluid Type	Fluid Name	Surface Density lbm/gal	Avg Rate bbl/min	Surface Volume	Downhole Volume
1	1	Spacer	Fresh Water Spacer	8.33	3.00	10.0 bbl	10.0 bbl
1	2	Spacer	Mud Flush	8.40	3.00	12.0 bbl	12.0 bbl
1	1	Spacer	Fresh Water Spacer	8.33	4.00	10.0 bbl	10.0 bbl
1	3	Cement Slurry	SwiftCem B2	14.20	5.00	384.0 sacks	384.0 sacks

Fluids Pumped

Stage/Plug # 1 Fluid 1: Fresh Water Spacer
DUMMY MUD / FLUSH / SPACER SBC MATERIAL

Fluid Density: 8.33 lbm/gal
Fluid Volume: 10.00 bbl
Pump Rate: 3.00 bbl/min

Stage/Plug # 1 Fluid 2: Mud Flush
DUMMY MUD / FLUSH / SPACER SBC MATERIAL
3.33 lbm/bbl Mud Flush III
42 gal/bbl Mud Flush III

Fluid Density: 8.40 lbm/gal
Fluid Volume: 12.00 bbl
Pump Rate: 3.00 bbl/min

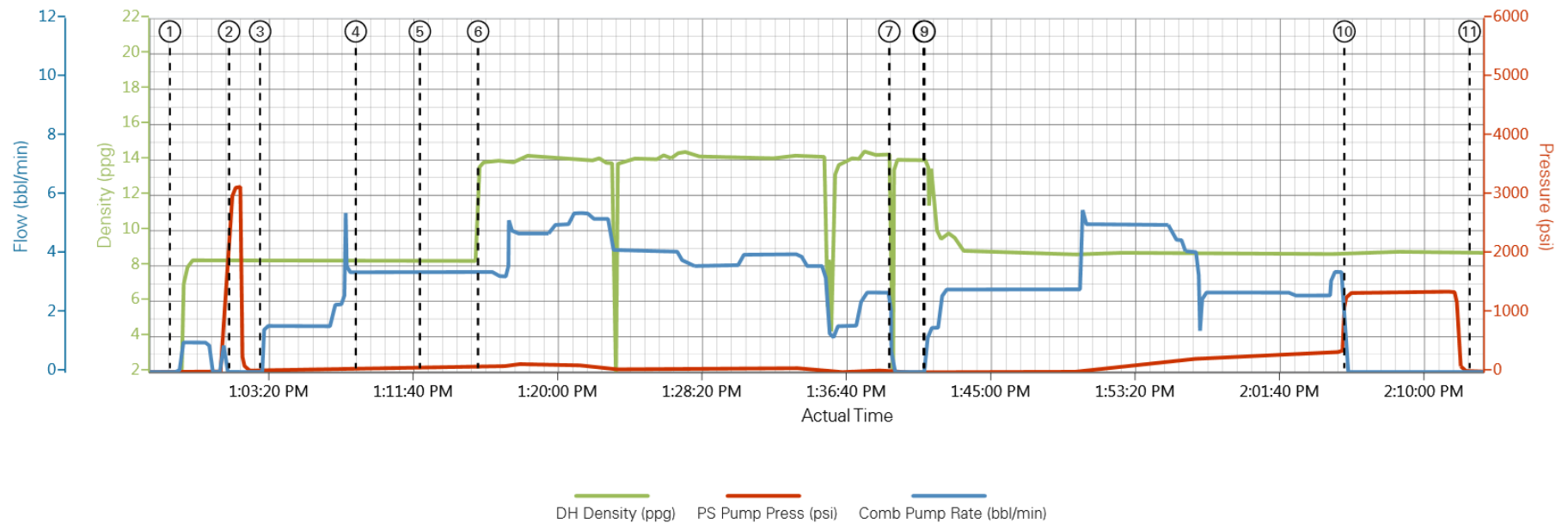
Stage/Plug # 1 Fluid 3: SwiftCem B2
SWIFTCM (TM) SYSTEM

Fluid Weight: 14.20 lbm/gal
Slurry Yield: 1.54 ft³/sack
Total Mixing Fluid: 7.66 Gal
Surface Volume: 384.0 sacks
Sacks: 384.0 sacks
Calculated Fill: 900.00 ft
Calculated Top of Fluid: 0.00 ft

HALLIBURTON

Data Acquisition

9-10-13 Anadarko Surface D & C Farms



- ① Start Job
- ② Test Lines
- ③ Pump Spacer 1
- ④ Pump Spacer 2
- ⑤ Pump Spacer 1
- ⑥ Pump Cement
- ⑦ Shutdown
- ⑧ Drop Top Plug
- ⑨ Pump Displacement
- ⑩ Bump Plug
- ⑪ End Job

▲ Halliburton | iCem Service®

Created: 2013-09-10 12:37:31 , Version: 1.4.96

Edit

HALLIBURTON

Service Supervisor Reports

Job Log

Date/Time	Chart #	Activity Code	Pump Rate	Cum Vol	Pump		Pressure (psig)		Comments
09/10/2013 11:30		Arrive at Location from Service Center							Arrived to rig 30mins early, and rig is TD... Chain up trucks to get on Location
09/10/2013 11:50		Assessment Of Location Safety Meeting							Hazard Hunt on Location before spotting trucks
09/10/2013 11:55		Safety Meeting - Pre Rig-Up							Safety Huddle on rigging up trucks and iron to rig
09/10/2013 12:00		Rig-Up Equipment							
09/10/2013 12:35		Rig-Up Completed							
09/10/2013 12:40		Safety Meeting - Pre Job							JSA with Company Man, Rig hands, & HES hands
09/10/2013 12:57		Start Job							
09/10/2013 13:01		Test Lines							3500psi Pressure Test Lines to Rig Floor
09/10/2013 13:02		Pump Spacer 1	3	10					10bbls H2O spacer
09/10/2013 13:08		Pump Spacer 2	3	12				40.0	12bbls MudFlush spacer
09/10/2013 13:12		Pump Spacer 1	4	10				45.0	10bbls H2O spacer
09/10/2013 13:15		Pump Cement	5	105.3				120.0	384sks Swiftcem, 14.2ppg, 1.54yield, 7.66gal/sk, Mixed with rig water and # verify by pressurized mud scales
09/10/2013 13:39		Shutdown							
09/10/2013 13:41		Drop Top Plug							Pre-Loaded
09/10/2013 13:41		Pump Displacement	5	76				300.0	H2O displacement, Good returns throughout.. Total 10bbls cmt back to surface
09/10/2013 14:05		Bump Plug	3					1103.0	Slowed down last 20bbls to 3bbl/min to bump... Plug Landed at 323psi and brought to 1103psi for 5mins
09/10/2013 14:12		Check Floats							Floats Held
09/10/2013 14:13		End Job							
09/10/2013 14:15		Safety Meeting - Pre Rig-Down							Safety Huddle by supervisor truck on rigging down trucks and Iron
09/10/2013 14:40		Rig-Down Equipment							
09/10/2013 15:15		Rig-Down Completed							
09/10/2013 15:30		Safety Meeting - Departing Location							Safety meeting on Pre-tripping trucks and driving back to Brighton Yard

The Road to Excellence Starts with Safety

Sold To #: 300466	Ship To #: 3099764	Quote #:	Sales Order #: 900734157
Customer: ANADARKO PETROLEUM CORP - EBUS		Customer Rep: Hersh, Larry	
Well Name: D&C Farms		Well #: 35N-33HZ	API/UWI #:
Field: WATTENBERG	City (SAP): DACONO	County/Parish: Weld	State: Colorado
Contractor: MAJORS		Rig/Platform Name/Num: Majors 42	
Job Purpose: Cement Surface Casing			
Well Type: Development Well		Job Type: Cement Surface Casing	
Sales Person: FLING, MATTHEW	Srvc Supervisor: BULINSKI, MATTHEW	MBU ID Emp #: 483865	

Job Personnel

HES Emp Name	Exp Hrs	Emp #	HES Emp Name	Exp Hrs	Emp #	HES Emp Name	Exp Hrs	Emp #
BULINSKI, MATTHEW J	0.0	483865	CARPENTER, JACOB P	0.0	499500	SINCLAIR, RICHARD	0.0	368195
VIATOR, JASON R.	0.0	550394						

Equipment

HES Unit #	Distance-1 way	HES Unit #	Distance-1 way	HES Unit #	Distance-1 way	HES Unit #	Distance-1 way
11398319	20 mile	11542778	20 mile	11562546C	20 mile	11605598	20 mile

Job Hours

Date	On Location Hours	Operating Hours	Date	On Location Hours	Operating Hours	Date	On Location Hours	Operating Hours
TOTAL			Total is the sum of each column separately					

Job

Job Times

Formation Name	Formation Depth (MD)	Top	Bottom	Form Type	Job depth MD	Job Depth TVD	Water Depth	Perforation Depth (MD)	From	To	Called Out	Date	Time	Time Zone
				BHST	921. ft	921. ft						10 - Sep - 2013	08:00	MST
											On Location	10 - Sep - 2013	11:30	MST
											Job Started	10 - Sep - 2013	12:57	MST
											Job Completed	10 - Sep - 2013	14:13	MST
											Departed Loc	10 - Sep - 2013	15:30	MST

Well Data

Description	New / Used	Max pressure psig	Size in	ID in	Weight lbm/ft	Thread	Grade	Top MD ft	Bottom MD ft	Top TVD ft	Bottom TVD ft
13 1/2" Open Hole Section				13.5				.	921.		
9 5/8" Surface Casing	Unknown		9.625	8.921	36.		J-55	.	921.		

Sales/Rental/3rd Party (HES)

Description	Qty	Qty uom	Depth	Supplier
CMT CASING EQUIPMENT BOM	1	JOB		
MILEAGE FOR CEMENTING CREW,ZI	30	MI		
ZI FUEL SURCHG-CARS/PICKUPS<1 1/2TON	30	MI		
KIT,HALL WELD-A	1	EA		
CNTRLZR, 9 5/8"x13 3/4',#500-0963-1375	7	EA		
BASKET - CEMENT - 9-5/8 CSG X 12-1/4	1	EA		
Description	Qty	Qty uom	Depth	Supplier

PLUG,CMTG, TOP, 9 5/8, HWE, 8.16 MIN/9.06 MA					1	EA			
COLLAR-STOP-9 5/8"-FRICTION-HINGED					2	EA			
Fluid Data									
Stage/Plug #: 1									
Fluid #	Stage Type	Fluid Name	Qty	Qty uom	Mixing Density lbm/gal	Yield ft ³ /sk	Mix Fluid Gal/sk	Rate bbl/min	Total Mix Fluid Gal/sk
1	Fresh Water Spacer		10.00	bbl	8.33			3.0	
2	Mud Flush		12.00	bbl	8.4			3.0	
3.33 lbm/bbl		MUD FLUSH III, 40 LB SACK (101633304)							
42 gal/bbl		MUD FLUSH III - SBM (528788)							
1	Fresh Water Spacer		10.00	bbl	8.33			4.0	
3	SwiftCem B2	SWIFTCM (TM) SYSTEM (452990)	384.0	sacks	14.2	1.54	7.66	5.0	7.66
7.66 Gal		FRESH WATER							
Calculated Values		Pressures		Volumes					
Displacement		Shut In: Instant		Lost Returns		Cement Slurry		Pad	
Top Of Cement		5 Min		Cement Returns		10	Actual Displacement	76	Treatment
Frac Gradient		15 Min		Spacers		32	Load and Breakdown		Total Job
Rates									
Circulating		Mixing		Displacement		Avg. Job			
Cement Left In Pipe		Amount	42 ft	Reason	Shoe Joint				
Frac Ring # 1 @	ID	Frac ring # 2 @	ID	Frac Ring # 3 @	ID	Frac Ring # 4 @	ID		
The Information Stated Herein Is Correct				Customer Representative Signature					

