

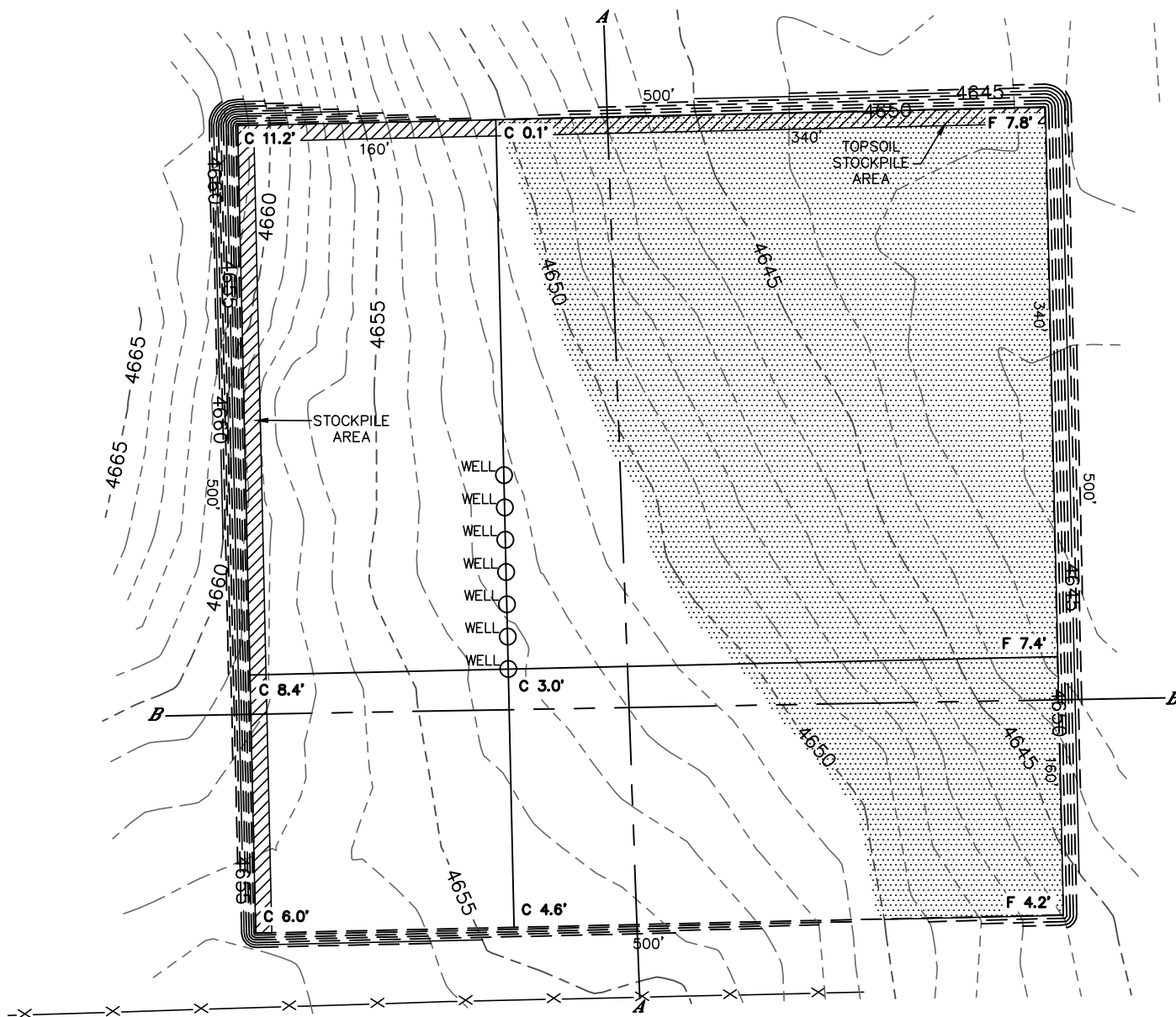


Lat40°, Inc. 1635 Foxtrail Drive, Suite 325 Loveland, CO 970-776-3321

CUT & FILL DIAGRAM

STATE WHITETAIL O-36 PAD

SECTION: 36
TOWNSHIP: 6N
RANGE: 62W



OPERATOR: BONANZA CREEK ENERGY, INC.
LOCATION: 200' FSL, 2546' FEL
EXISTING ELEV= 4653.2'
PROPOSED ELEV=4650.2'
DISTURBANCE= 6.3 ACRES

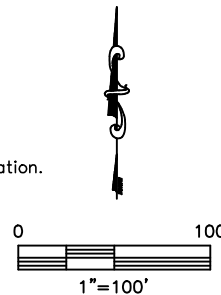
ESTIMATED EARTHWORK:
TOPSOIL= 10,110 CY
CUT= 20,833 CY
FILL= 20,823 CY
STOCKPILE:
EXCESS= 10 CY

NOTE:

- 1) Ground elevations are based on an observed GPS elevation (NAVD 1988 DATUM).
- 2) No allowance has been made for soil expansion or compaction
- 3) Proposed elevation does not account for top soil removal.
- 4) Top soil volume assumes 12" depth across entire location.
- 5) Fill slopes 2:1
- 6) Cut slopes 1.5:1

LEGEND

| | |
|--------------|-------|
| EX. CONTOUR | --- |
| PRO. CONTOUR | - - - |
| FILL AREA | |

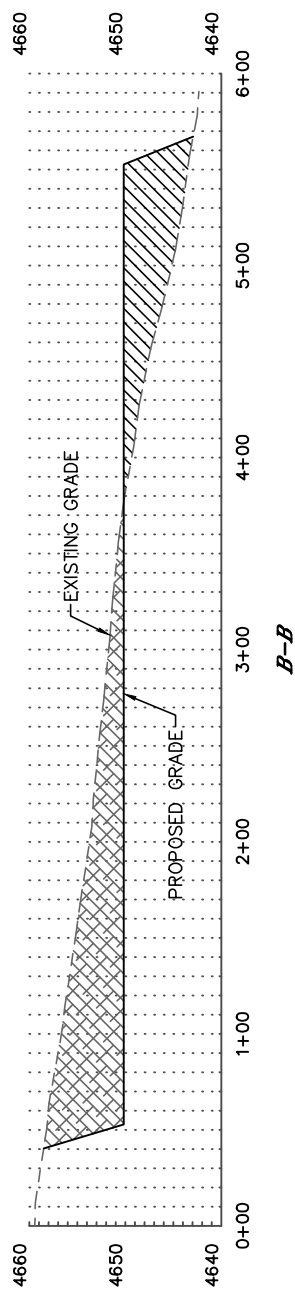
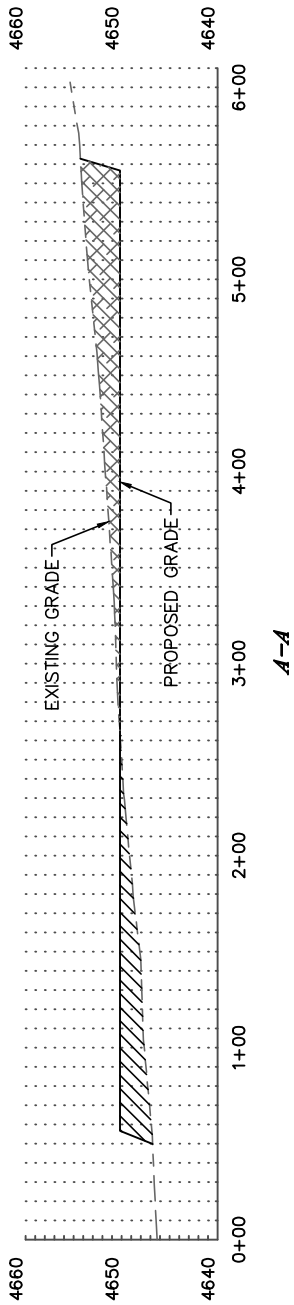


DATE: 12/5/2013
PROJECT#: 2012072



CROSS SECTION DIAGRAM
STATE WHITETAIL 0-36 PAD

SECTION: 36
TOWNSHIP: 6N
RANGE: 62W



HORIZONTAL SCALE: 1"=100', VERTICAL SCALE: 1"=20'