

T12S, R89W, 6th P.M.

GUNNISON ENERGY CORPORATION

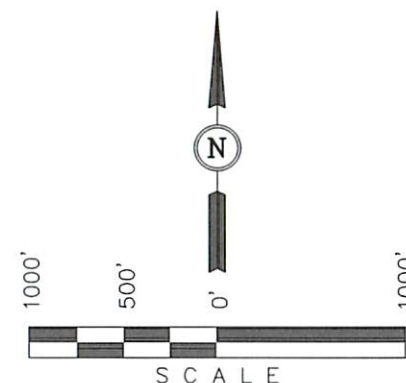
Well location, DMGU FEDERAL 1289 #18-H5 (SURFACE LOCATION), located as shown in the SW 1/4 NE 1/4 of Section 18, T12S, R89W, 6th. P.M., Gunnison County, Colorado.

BASIS OF ELEVATION

SPOT ELEVATION LOCATED IN THE NE 1/4 OF SECTION 9, T11S, R90W, 6th P.M. TAKEN FROM THE BULL MOUNTAIN QUADRANGLE, COLORADO, GUNNISON COUNTY, 7.5 MINUTE SERIES (TOPOGRAPHICAL MAP) PUBLISHED BY THE UNITED STATES DEPARTMENT OF THE INTERIOR, GEOLOGICAL SURVEY. SAID ELEVATION IS MARKED AS BEING 7487 FEET.

BASIS OF BEARINGS

BASIS OF BEARINGS IS A G.P.S. OBSERVATION.



CERTIFICATE

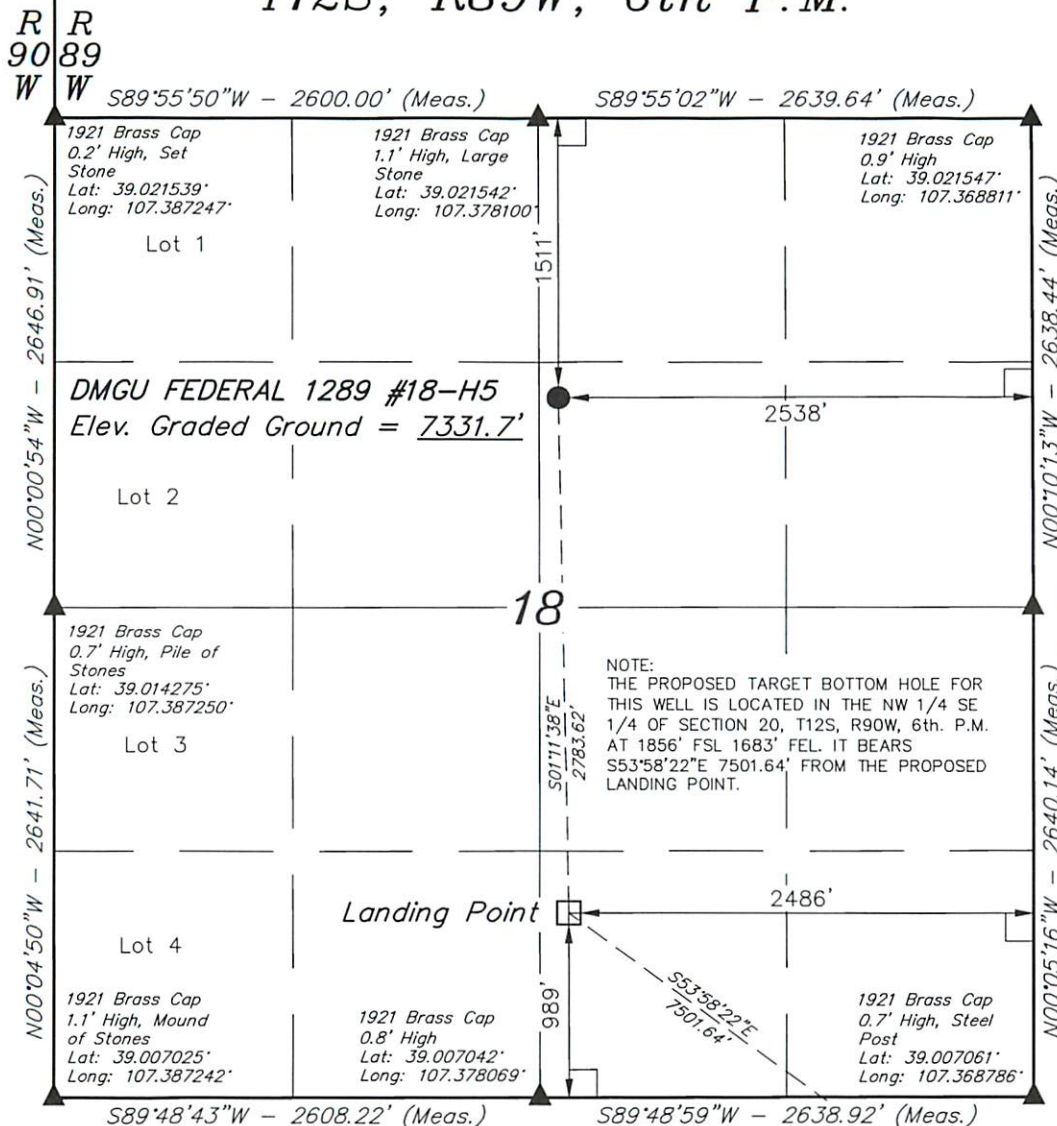
THIS IS TO CERTIFY THAT THE ABOVE PLAT WAS PREPARED FROM FIELD NOTES OF ACTUAL SURVEYS MADE BY ME OR UNDER MY SUPERVISION AND THAT THE SAME ARE TRUE AND CORRECT TO THE BEST OF MY KNOWLEDGE AND BELIEF.

REGISTERED LAND SURVEYOR
REGISTRATION NO. 1745
STATE OF COLORADO
01-23-13

REVISED: 12-04-13 M.D.
REVISED: 10-17-13 M.D.
REVISED: 10-09-13 M.D.

UINTAH ENGINEERING & LAND SURVEYING
85 SOUTH 200 EAST - VERNAL, UTAH 84078
(435) 789-1017

| | | |
|---------------------------|-------------------------------------|-------------------------|
| SCALE 1" = 1000' | DATE SURVEYED: 01-22-13 | DATE DRAWN: 01-23-13 |
| PARTY B.B. B.J. J.G.G. | REFERENCES G.L.O. PLAT | |
| WEATHER COLD | FILE GUNNISON ENERGY CORPORATION | |



NOTE:
THE PROPOSED TARGET BOTTOM HOLE FOR THIS WELL IS LOCATED IN THE NW 1/4 SE 1/4 OF SECTION 20, T12S, R90W, 6th. P.M. AT 1856' FSL 1683' FEL. IT BEARS S53°58'22"E 7501.64' FROM THE PROPOSED LANDING POINT.

Target
Bottom
Hole

PDOP = 1.2

NOTE:
SEE ADDENDUM TO LEGAL PLAT FOR EXISTING IMPROVEMENTS WITHIN 500' OF THE PROPOSED WELL DISTURBANCE.

LEGEND:

- └─┘ = 90° SYMBOL
- = PROPOSED WELL HEAD.
- ▲ = SECTION CORNERS LOCATED.

| | |
|--|---|
| NAD 83 (LANDING POINT) LATITUDE = 39°00'35.12" (39.009756) LONGITUDE = 107°22'39.12" (107.377533) | NAD 83 (SURFACE LOCATION) LATITUDE = 39°01'02.62" (39.017394) LONGITUDE = 107°22'39.83" (107.377731) |
| NAD 27 (LANDING POINT) LATITUDE = 39°00'35.16" (39.009767) LONGITUDE = 107°22'36.93" (107.376925) | NAD 27 (SURFACE LOCATION) LATITUDE = 39°01'02.66" (39.017406) LONGITUDE = 107°22'37.64" (107.377122) |
| UTM COORD.: NAD 1927/ZONE 13 N: 14174317.36 E: 965183.47 | UTM COORD.: NAD 1927/ZONE 13 N: 14177100.22 E: 965200.28 |

T12S, R89W, 6th P.M.

1921 Brass Cap
0.5' High, Iron Pipe
Lat: 39.013919°
Long: 107.350362°

W.C. 2005 Alum. Cap
0.3' High, PLS #25972
Lat: 39.006908°
Long: 107.350255°

2005 Alum. Cap
0.7' High
Lat: 39.006903°
Long: 107.359519°

NOTE:
THE PROPOSED TARGET BOTTOM HOLE BEARS
S53°58'22"E 7501.64' FROM THE PROPOSED
LANDING POINT WHICH IS LOCATED IN THE SW
1/4 SE 1/4 OF SECTION 18, T12S, R89W, 6th.
P.M. AT 989' FSL 2486' FWL.

2005 Alum. Cap
Lat: 38.999635°
Long: 107.354908°

1921 Brass Cap
1.1' High
Lat: 38.999540°
Long: 107.350319°

Alum. Cap
Lat: 38.996035°
Long: 107.350259°

1921 Brass Cap
0.9' High
Lat: 38.992506°
Long: 107.350213°

GUNNISON ENERGY CORPORATION

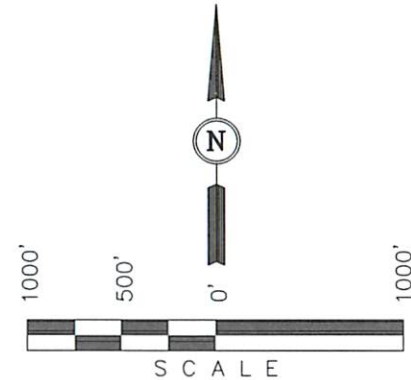
Well location, DMGU FEDERAL 1289 #18-H5
(TARGET BOTTOM HOLE), located as shown in the
NW 1/4 SE 1/4 of Section 20, T12S, R89W, 6th.
P.M., Gunnison County, Colorado.

BASIS OF ELEVATION

SPOT ELEVATION LOCATED IN THE NE 1/4 OF SECTION 9,
T11S, R90W, 6th P.M. TAKEN FROM THE BULL MOUNTAIN
QUADRANGLE, COLORADO, GUNNISON COUNTY, 7.5 MINUTE
SERIES (TOPOGRAPHICAL MAP) PUBLISHED BY THE UNITED
STATES DEPARTMENT OF THE INTERIOR, GEOLOGICAL SURVEY.
SAID ELEVATION IS MARKED AS BEING 7487 FEET.

BASIS OF BEARINGS

BASIS OF BEARINGS IS A G.P.S. OBSERVATION.



CERTIFICATE

THIS IS TO CERTIFY THAT THE ABOVE PLAT WAS PREPARED FROM
FIELD NOTES OF ACTUAL SURVEYS MADE BY ME OR UNDER MY
SUPERVISION AND THAT THE SAME ARE TRUE AND CORRECT TO THE
BEST OF MY KNOWLEDGE AND BELIEF.

REGISTERED LAND SURVEYOR
REGISTRATION NO. 10000
STATE OF COLORADO
42-04-13

REVISED: 12-04-13 M.D.
REVISED: 10-17-13 M.D.
REVISED: 10-09-13 M.D.

UINTAH ENGINEERING & LAND SURVEYING

85 SOUTH 200 EAST - VERNAL, UTAH 84078

(435) 789-1017

Landing Point

LEGEND:

- └─┘ = 90° SYMBOL
- = PROPOSED WELL HEAD.
- ▲ = SECTION CORNERS LOCATED.
- △ = SECTION CORNERS RE-ESTABLISHED. (Not Set on Ground.)

| | |
|--|--------------|
| NAD 83 (TARGET BOTTOM HOLE) | |
| LATITUDE = 38°59'51.48" (38.997633) | |
| LONGITUDE = 107°21'22.35" (107.356208) | |
| NAD 27 (TARGET BOTTOM HOLE) | |
| LATITUDE = 38°59'51.52" (38.997644) | |
| LONGITUDE = 107°21'20.16" (107.355600) | |
| UTM COORD.: NAD 1927/ZONE 13 | |
| N: 14169744.83 | E: 971128.02 |

| | | |
|---------------------------|-------------------------------------|-------------------------|
| SCALE 1" = 1000' | DATE SURVEYED: 01-22-13 | DATE DRAWN: 01-23-13 |
| PARTY B.B. B.J. J.G.G. | REFERENCES G.L.O. PLAT | |
| WEATHER COLD | FILE GUNNISON ENERGY CORPORATION | |