

T12S, R89W, 6th P.M.

GUNNISON ENERGY CORPORATION

Well location, DMGU FEDERAL 1289 #18-H4
(SURFACE LOCATION), located as shown in the SW
1/4 NE 1/4 of Section 18, T12S, R89W, 6th. P.M.,
Gunnison County, Colorado.

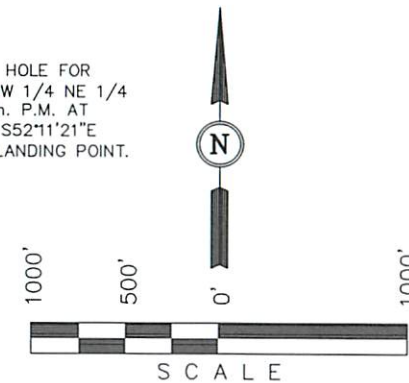
BASIS OF ELEVATION

SPOT ELEVATION LOCATED IN THE NE 1/4 OF SECTION 9,
T11S, R90W, 6th P.M. TAKEN FROM THE BULL MOUNTAIN
QUADRANGLE, COLORADO, GUNNISON COUNTY, 7.5 MINUTE
SERIES (TOPOGRAPHICAL MAP) PUBLISHED BY THE UNITED
STATES DEPARTMENT OF THE INTERIOR, GEOLOGICAL SURVEY.
SAID ELEVATION IS MARKED AS BEING 7487 FEET.

BASIS OF BEARINGS

BASIS OF BEARINGS IS A G.P.S. OBSERVATION.

NOTE:
THE PROPOSED TARGET BOTTOM HOLE FOR
THIS WELL IS LOCATED IN THE SW 1/4 NE 1/4
OF SECTION 20, T12S, R89W, 6th. P.M. AT
1789' FNL 2450' FEL. IT BEARS S52°11'21"E
6946.22' FROM THE PROPOSED LANDING POINT.



CERTIFICATE

THIS IS TO CERTIFY THAT THE ABOVE PLAT WAS PREPARED FROM
FIELD NOTES OF ACTUAL SURVEYS MADE BY ME OR UNDER MY
SUPERVISION AND THAT THE SAME ARE TRUE AND CORRECT TO THE
BEST OF MY KNOWLEDGE AND BELIEF.

REGISTERED LAND SURVEYOR
REGISTRATION NO. 1789
STATE OF COLORADO
02-04-13

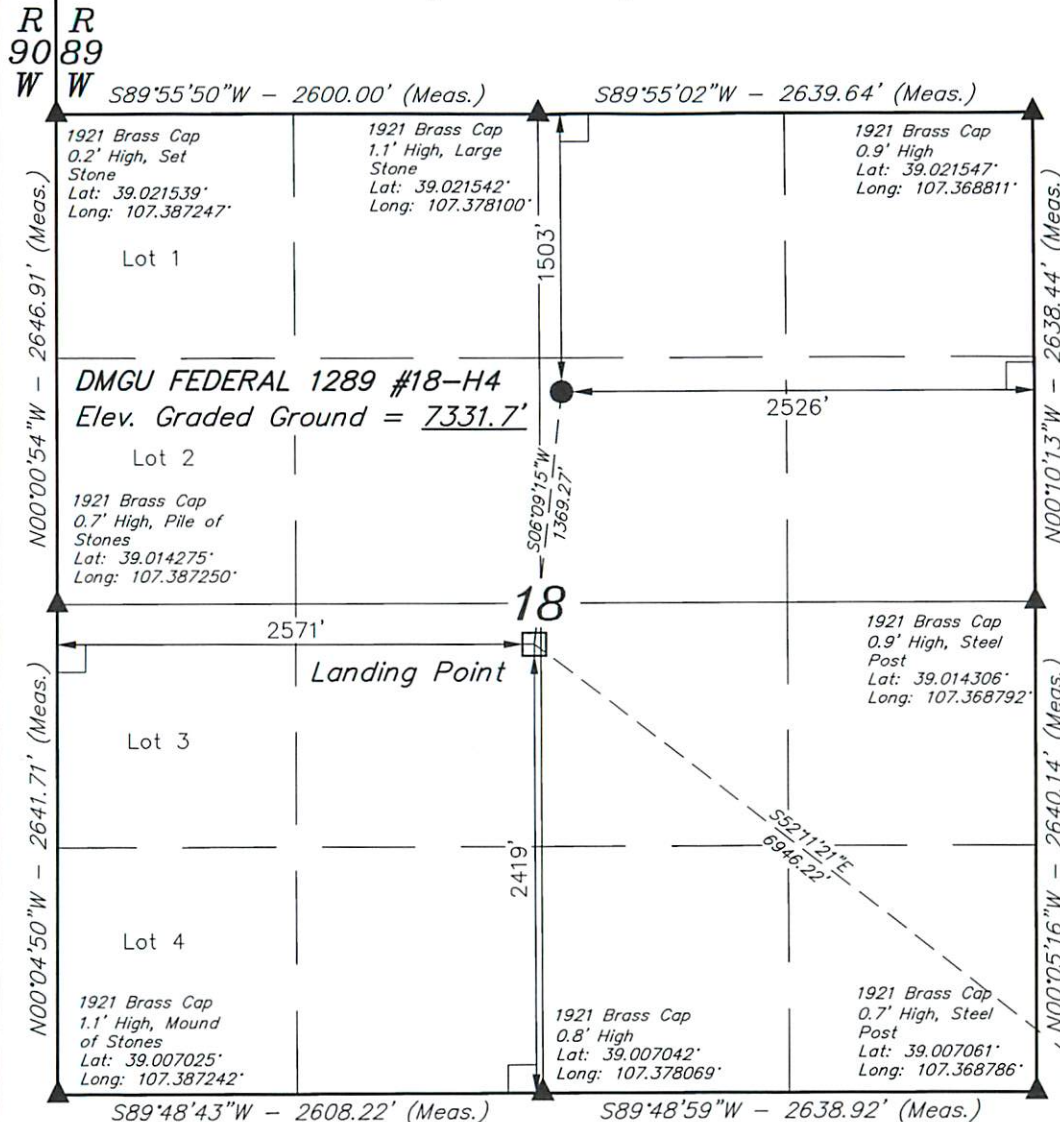
REVISED: 12-04-13 M.D.
REVISED: 10-09-13 M.D.

UINTAH ENGINEERING & LAND SURVEYING

85 SOUTH 200 EAST - VERNAL, UTAH 84078

(435) 789-1017

SCALE 1" = 1000'	DATE SURVEYED: 01-22-13	DATE DRAWN: 01-23-13
PARTY B.B. B.J. J.G.G.	REFERENCES G.L.O. PLAT	
WEATHER COLD	FILE GUNNISON ENERGY CORPORATION	



NOTE:
SEE ADDENDUM TO LEGAL PLAT FOR
EXISTING IMPROVEMENTS WITHIN 500'
OF THE PROPOSED WELL DISTURBANCE.

PDOP = 1.3

LEGEND:

- └─┘ = 90° SYMBOL
- = PROPOSED WELL HEAD.
- ▲ = SECTION CORNERS LOCATED.

NAD 83 (LANDING POINT)	NAD 83 (SURFACE LOCATION)
LATITUDE = 39°00'49.25" (39.013681)	LATITUDE = 39°01'02.70" (39.017417)
LONGITUDE = 107°22'41.54" (107.378206)	LONGITUDE = 107°22'39.67" (107.377686)
NAD 27 (LANDING POINT)	NAD 27 (SURFACE LOCATION)
LATITUDE = 39°00'49.29" (39.013692)	LATITUDE = 39°01'02.74" (39.017428)
LONGITUDE = 107°22'39.35" (107.377597)	LONGITUDE = 107°22'37.48" (107.377078)
UTM COORD.: NAD 1927/ZONE 13 N: 14175751.29 E: 965029.68	UTM COORD.: NAD 1927/ZONE 13 N: 14177107.88 E: 965212.96

T12S, R89W, 6th P.M.

1921 Brass Cap
0.5' High, Iron Pipe
Lat: 39.013919°
Long: 107.350362°

W.C. 2005 Alum. Cap
0.3' High, PLS #25972
Lat: 39.006908°
Long: 107.350255°

N00°44'39"W
2614.77' (Meas. to True)

GUNNISON ENERGY CORPORATION

Well location, DMGU FEDERAL 1289 #18-H4 (TARGET BOTTOM HOLE), located as shown in the NE 1/4 SE 1/4 of Section 20, T12S, R89W, 6th. P.M., Gunnison County, Colorado.

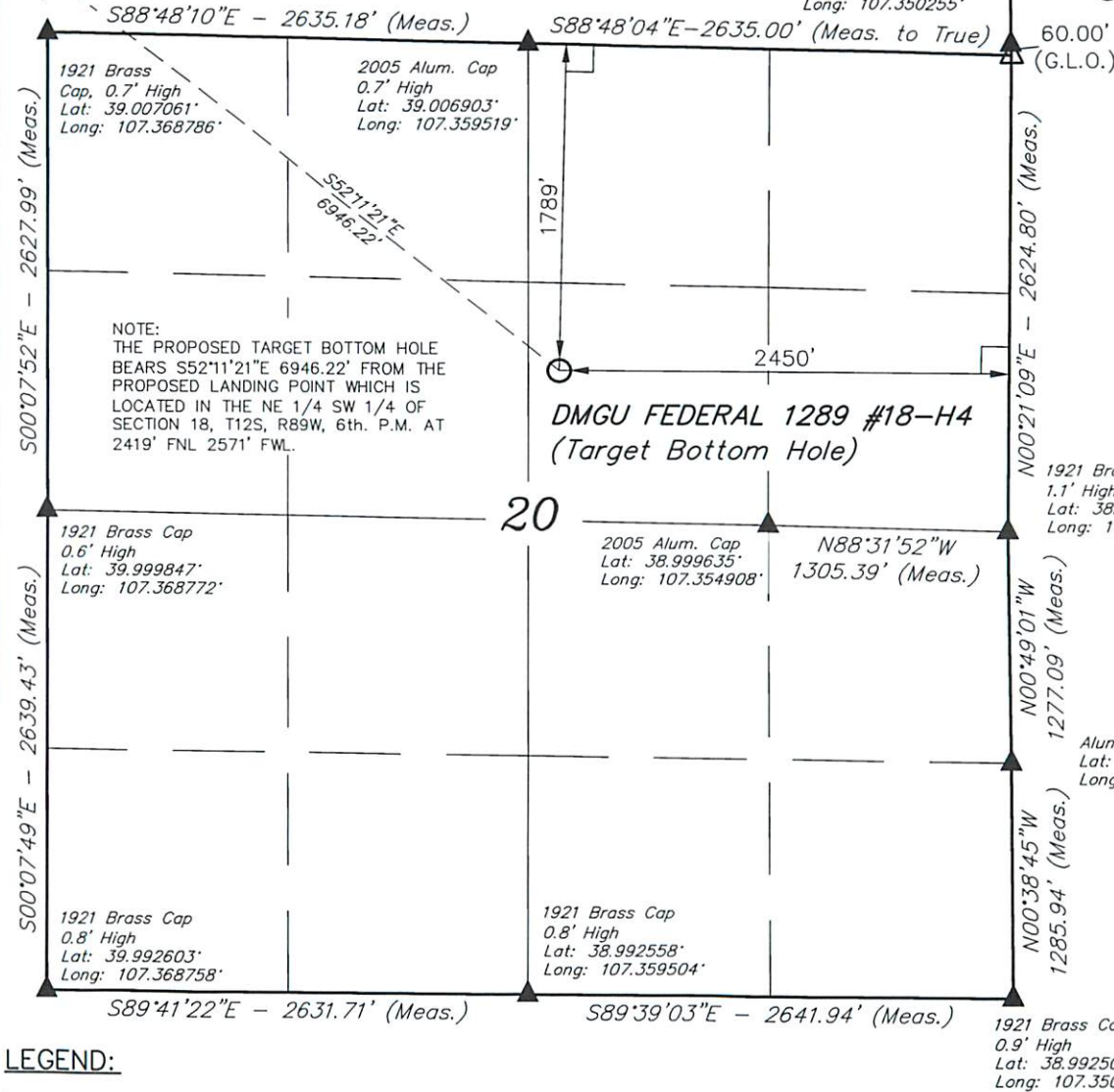
BASIS OF ELEVATION

SPOT ELEVATION LOCATED IN THE NE 1/4 OF SECTION 9, T11S, R90W, 6th P.M. TAKEN FROM THE BULL MOUNTAIN QUADRANGLE, COLORADO, GUNNISON COUNTY, 7.5 MINUTE SERIES (TOPOGRAPHICAL MAP) PUBLISHED BY THE UNITED STATES DEPARTMENT OF THE INTERIOR, GEOLOGICAL SURVEY. SAID ELEVATION IS MARKED AS BEING 7487 FEET.

BASIS OF BEARINGS

BASIS OF BEARINGS IS A G.P.S. OBSERVATION.

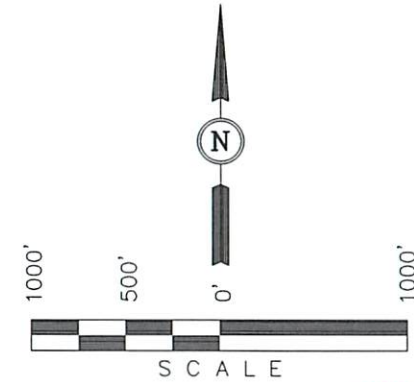
Landing Point



LEGEND:

- └─┘ = 90° SYMBOL
- = PROPOSED WELL HEAD.
- ▲ = SECTION CORNERS LOCATED.
- △ = SECTION CORNERS RE-ESTABLISHED. (Not Set on Ground.)

NAD 83 (TARGET BOTTOM HOLE)	
LATITUDE = 39°00'07.13" (39.001981)	
LONGITUDE = 107°21'32.09" (107.358914)	
NAD 27 (TARGET BOTTOM HOLE)	
LATITUDE = 39°00'07.17" (39.001992)	
LONGITUDE = 107°21'29.90" (107.358306)	
UTM COORD.: NAD 1927/ZONE 13	
N: 14171348.07	E: 970399.97



CERTIFICATE

THIS IS TO CERTIFY THAT THE ABOVE PLAT WAS PREPARED FROM FIELD NOTES OF ACTUAL SURVEYS MADE BY MEOR UNDER MY SUPERVISION AND THAT THE SAME ARE TRUE AND CORRECT TO THE BEST OF MY KNOWLEDGE AND BELIEF.

REGISTERED LAND SURVEYOR
REGISTRATION NO. 17452
STATE OF COLORADO
02-04-13

REVISED: 12-04-13 M.D.
REVISED: 10-09-13 M.D.

UINTAH ENGINEERING & LAND SURVEYING

85 SOUTH 200 EAST - VERNAL, UTAH 84078

(435) 789-1017

SCALE 1" = 1000'	DATE SURVEYED: 01-22-13	DATE DRAWN: 01-23-13
PARTY B.B. B.J. J.G.G.	REFERENCES G.L.O. PLAT	
WEATHER COLD	FILE GUNNISON ENERGY CORPORATION	