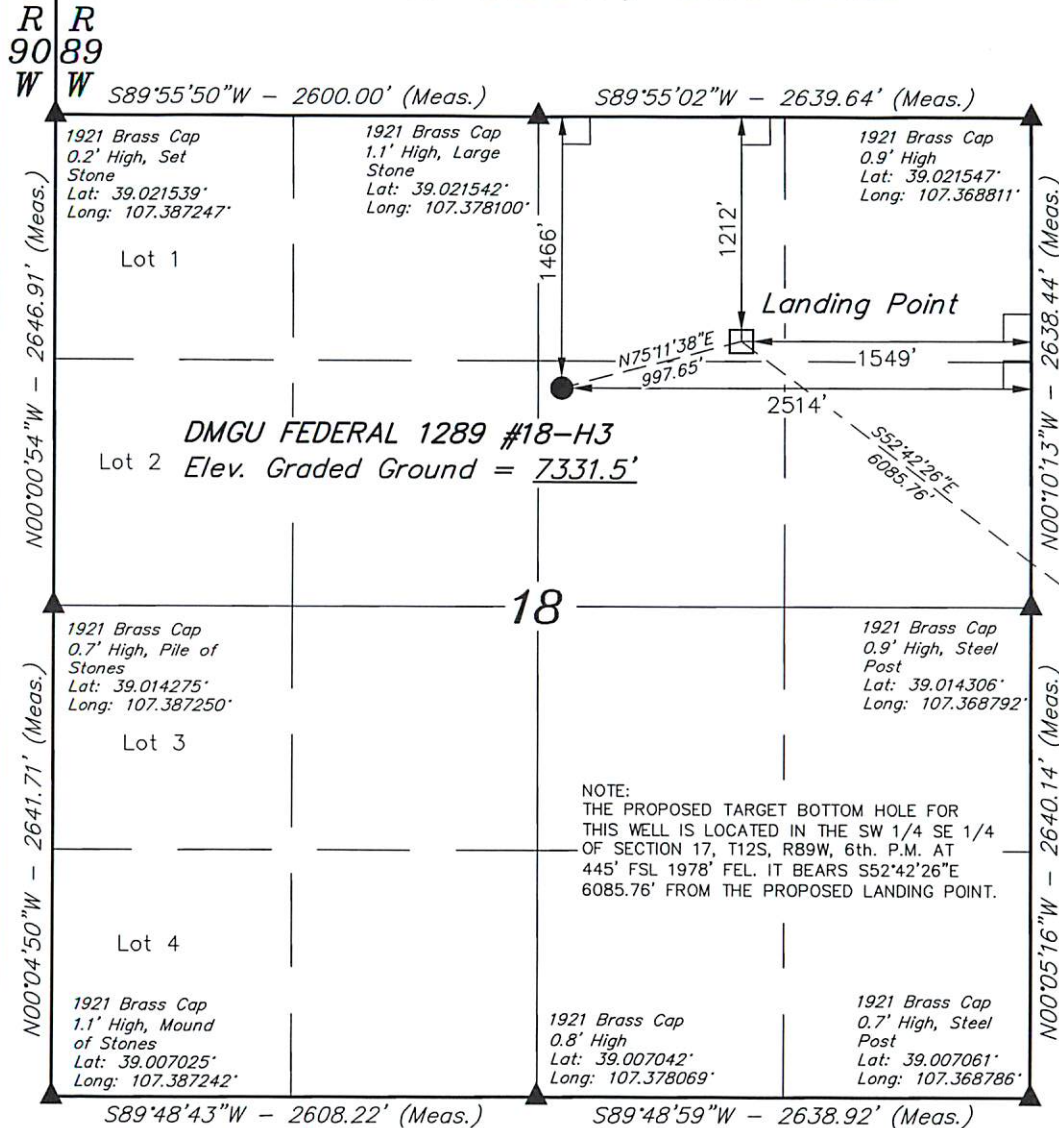


T12S, R89W, 6th P.M.



NOTE:  
THE PROPOSED TARGET BOTTOM HOLE FOR  
THIS WELL IS LOCATED IN THE SW 1/4 SE 1/4  
OF SECTION 17, T12S, R89W, 6th. P.M. AT  
445' FSL 1978' FEL. IT BEARS S52°42'26\"/>

NOTE:  
SEE ADDENDUM TO LEGAL PLAT FOR  
EXISTING IMPROVEMENTS WITHIN 500'  
OF THE PROPOSED WELL DISTURBANCE.

PDOP = 1.3

**LEGEND:**

- └─ = 90° SYMBOL
- = PROPOSED WELL HEAD.
- ▲ = SECTION CORNERS LOCATED.

NAD 83 (LANDING POINT)	NAD 83 (SURFACE LOCATION)
LATITUDE = 39°01'05.58\"	LATITUDE = 39°01'03.07\"
LONGITUDE = 107°22'27.31\"	LONGITUDE = 107°22'39.53\"
NAD 27 (LANDING POINT)	NAD 27 (SURFACE LOCATION)
LATITUDE = 39°01'05.62\"	LATITUDE = 39°01'03.11\"
LONGITUDE = 107°22'25.12\"	LONGITUDE = 107°22'37.34\"
UTM COORD.: NAD 1927/ZONE 13 N: 14177374.03 E: 966195.84	UTM COORD.: NAD 1927/ZONE 13 N: 14177145.17 E: 965225.06

**GUNNISON ENERGY CORPORATION**

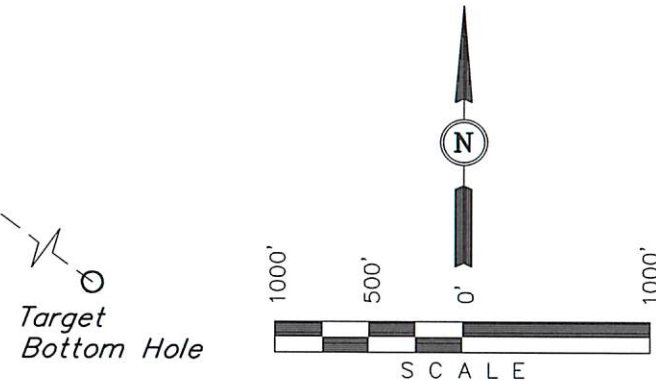
Well location, DMGU FEDERAL 1289 #18-H3  
(SURFACE LOCATION), located as shown in the SW  
1/4 NE 1/4 of Section 18, T12S, R89W, 6th. P.M.,  
Gunnison County, Colorado.

**BASIS OF ELEVATION**

SPOT ELEVATION LOCATED IN THE NE 1/4 OF SECTION 9,  
T11S, R90W, 6th P.M. TAKEN FROM THE BULL MOUNTAIN  
QUADRANGLE, COLORADO, GUNNISON COUNTY, 7.5 MINUTE  
SERIES (TOPOGRAPHICAL MAP) PUBLISHED BY THE UNITED  
STATES DEPARTMENT OF THE INTERIOR, GEOLOGICAL SURVEY.  
SAID ELEVATION IS MARKED AS BEING 7487 FEET.

**BASIS OF BEARINGS**

BASIS OF BEARINGS IS A G.P.S. OBSERVATION.



**CERTIFICATE**

THIS IS TO CERTIFY THAT THE ABOVE PLAT WAS PREPARED FROM  
FIELD NOTES OF ACTUAL SURVEYS MADE BY ME OR UNDER MY  
SUPERVISION AND THAT THE SAME ARE TRUE AND CORRECT TO THE  
BEST OF MY KNOWLEDGE AND BELIEF.

REVISED: 12-04-13 M.D.  
REVISED: 12-03-13 M.D.  
REVISED: 10-09-13 M.D.  
REVISED: 02-25-13  
REVISED: 02-20-13

REGISTERED LAND SURVEYOR  
REGISTRATION NO. 17852  
STATE OF COLORADO  
02-04-13

**UINTAH ENGINEERING & LAND SURVEYING**

85 SOUTH 200 EAST - VERNAL, UTAH 84078

(435) 789-1017

SCALE 1" = 1000'	DATE SURVEYED: 01-22-13	DATE DRAWN: 01-23-13
PARTY B.B. B.J. J.G.G.	REFERENCES G.L.O. PLAT	
WEATHER COLD	FILE GUNNISON ENERGY CORPORATION	

T12S, R89W, 6th P.M.

GUNNISON ENERGY CORPORATION

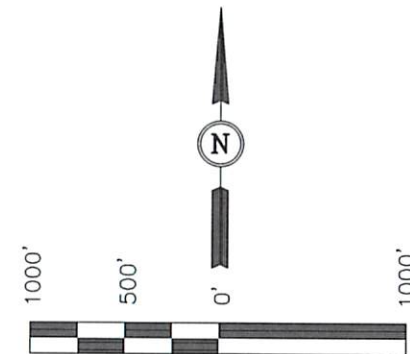
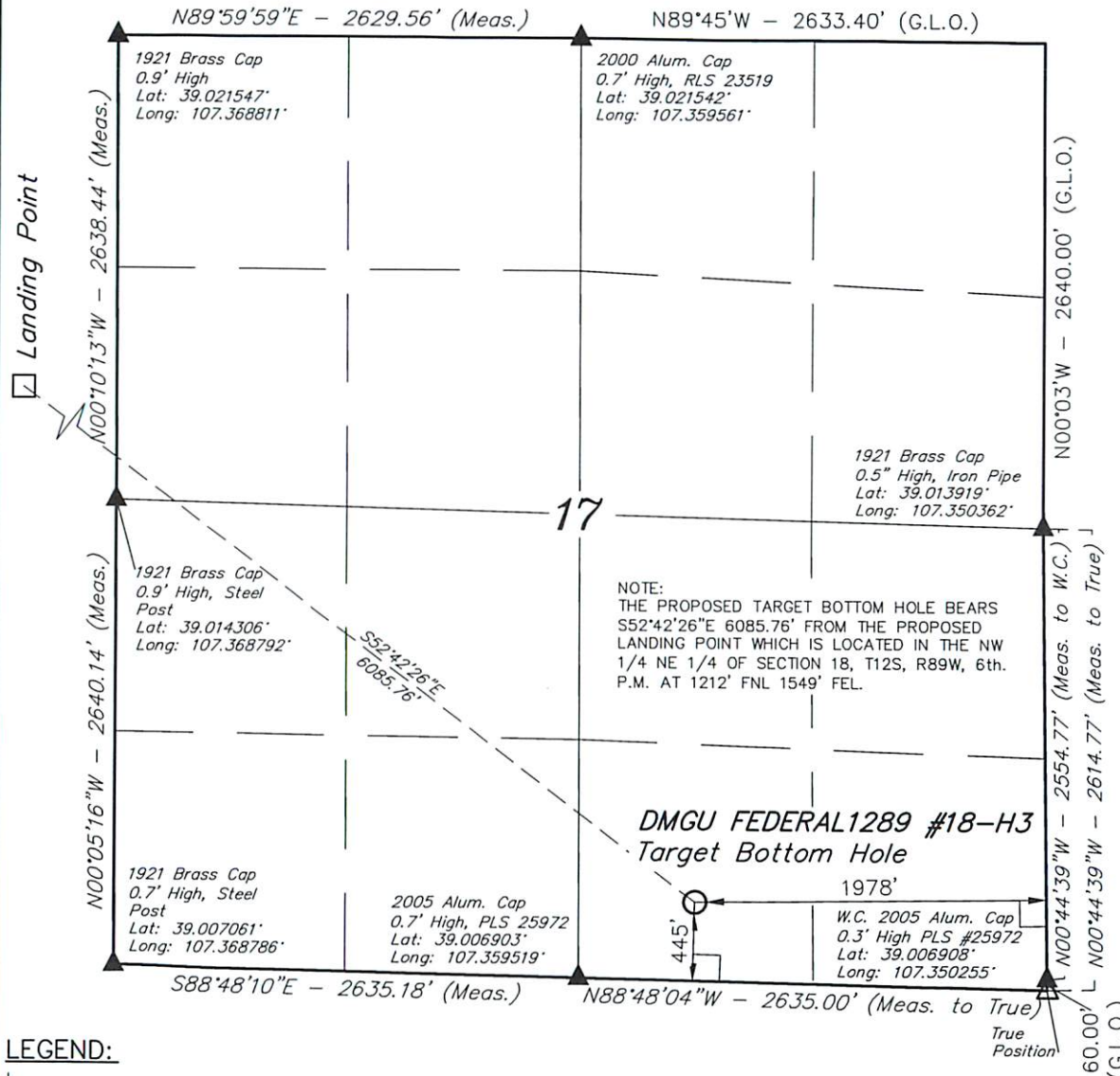
Well location, DMGU FEDERAL 1289 #18-H3 (TARGET BOTTOM HOLE), located as shown in the SW 1/4 SE 1/4 of Section 17, T12S, R89W, 6th. P.M., Gunnison County, Colorado.

### BASIS OF ELEVATION

SPOT ELEVATION LOCATED IN THE NE 1/4 OF SECTION 9, T11S, R90W, 6th P.M. TAKEN FROM THE BULL MOUNTAIN QUADRANGLE, COLORADO, GUNNISON COUNTY, 7.5 MINUTE SERIES (TOPOGRAPHICAL MAP) PUBLISHED BY THE UNITED STATES DEPARTMENT OF THE INTERIOR, GEOLOGICAL SURVEY. SAID ELEVATION IS MARKED AS BEING 7487 FEET.

### BASIS OF BEARINGS

BASIS OF BEARINGS IS A G.P.S. OBSERVATION.



SCALE  
CERTIFICATE

THIS IS TO CERTIFY THAT THE ABOVE PLAT WAS PREPARED FROM FIELD NOTES OF ACTUAL SURVEYS MADE BY ME OR UNDER MY SUPERVISION AND THAT THE SAME ARE TRUE AND CORRECT TO THE BEST OF MY KNOWLEDGE AND BELIEF.

ROBERT L. LUTHER  
REGISTERED LAND SURVEYOR  
REGISTRATION NO. 1789  
STATE OF COLORADO  
02-04-13

REVISED: 12-04-13 M.D.  
REVISED: 10-09-13 M.D.  
REVISED: 02-25-13  
REVISED: 02-20-13

UINTAH ENGINEERING & LAND SURVEYING  
85 SOUTH 200 EAST - VERNAL, UTAH 84078  
(435) 789-1017

### LEGEND:

- └─┘ = 90° SYMBOL
- = PROPOSED WELL HEAD.
- ▲ = SECTION CORNERS LOCATED.
- △ = SECTION CORNERS RE-ESTABLISHED. (Not Set on Ground.)

<b>NAD 83 (TARGET BOTTOM HOLE)</b>	
LATITUDE = 39°00'29.11" (39.008086)	
LONGITUDE = 107°21'26.04" (107.357233)	
<b>NAD 27 (TARGET BOTTOM HOLE)</b>	
LATITUDE = 39°00'29.15" (39.008097)	
LONGITUDE = 107°21'23.85" (107.356625)	
<b>UTM COORD.: NAD 1927/ZONE 13</b>	
N: 14173558.90	E: 970935.27

SCALE 1" = 1000'	DATE SURVEYED: 01-22-13	DATE DRAWN: 01-23-13
PARTY B.B. B.J. J.G.G.	REFERENCES G.L.O. PLAT	
WEATHER COLD	FILE GUNNISON ENERGY CORPORATION	