

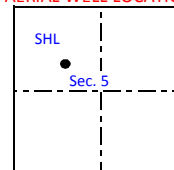
# CCI Paradox Upstream, LLC

REV.	DATE	<p><b>PROPOSED PLUG &amp; ABANDONMENT WELLBORE SCHEMATIC</b></p> <p>South Nucla Unit 5-22</p> <p>API No. 05-085-06046</p> <p>SHL: 2,073' FNL 1,892' FWL (SENW) Sec. 5 T46N R14W</p> <p>Unable to determine BHL from State records on file</p> <p>Montrose County, Colorado</p>	DRAWN	C. Noonan
			APP'D	J. Warren
			SCALE	Drawn to Scale
			DATE	12/26/2013
		1 of 1 SHEETS	SHEET	1

**SPUD DATE**  
November 9, 2007

Original lease operated by now insolvent Redwine Resources  
CCI agrees to plugging liability as largest remaining interest holder

**AERIAL WELL LOCATION**



**ELEVATION**  
Ground - 6,064'

**REDWINE RESOURCES**  
**FORMATION TOPS**

Surface Form.  
0' - Projected

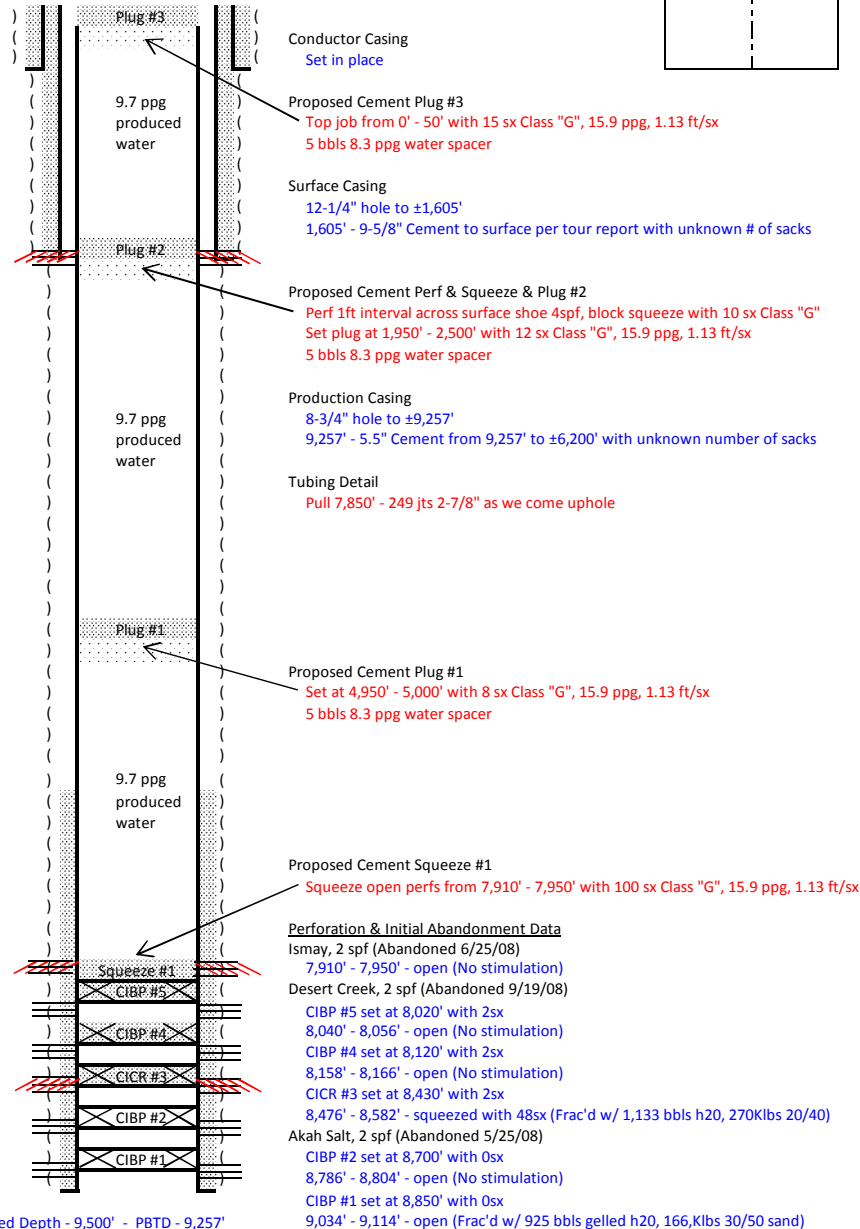
**CONDUCTOR CASING**  
Unable to determine size/grade

**SURFACE CASING**  
9-5/8" 36# J-55 ST&C

**PRODUCTION CASING**  
5-1/2" 17# P-110 LT&C

**TUBING**  
2-7/8" 6.5# L-80

Cut off csg below ground  
P&A Plate Welded On



Tops taken from Redwine WCR on file with COGCC

La Sal  
6,450'

Ismay  
7,180'

Hovenweep Shale  
7,650'

Gothic Shale  
7,950'

Desert Creek  
8,004'

Akah Salt  
8,270'

Please note:  
Existing well features in black  
Key well features in blue  
Operational changes in red