

GENERAL NOTES

PIT LINERS SHALL BE INSTALLED ACCORDING TO MANUFACTURER'S SPECIFICATIONS. PIT SIDES AND BOTTOM SHALL BE FREE FROM SHARP EDGES CAPABLE OF PUNCTURING LINER MATERIAL. GEOTEXTILE FABRIC MAY BE USED AS BEDDING MATERIAL. A SMOOTH BEDDING SURFACE SHALL BE PROVIDED PRIOR TO LINER INSTALLATION.

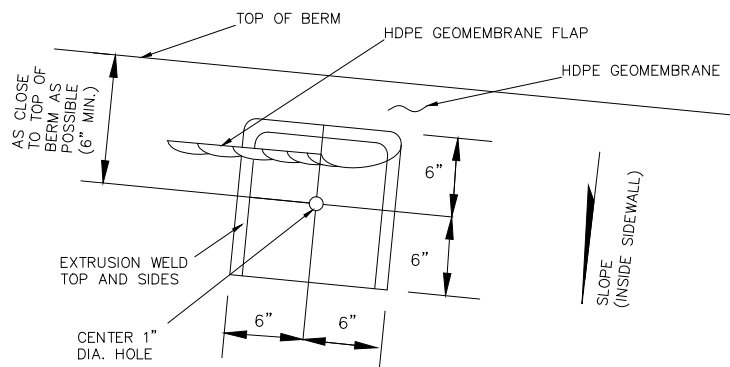
THE LEAK DETECTION PIPE SHALL BE A PERFORATED PVC PIPE WITHIN THE COLLECTION AREA. THE OBSERVATION SUMP SHALL BE AN 8" DIAMETER PVC PIPE WITH END CAP.

POROUS MATERIAL (DRAIN ROCK) IN THE COLLECTION AREA SHALL BE $\frac{3}{4}$ " TO $1\frac{1}{2}$ " CLEAN WASHED GRAVEL MATERIAL. MATERIAL DOES NOT NEED TO BE WELL GRADED BUT THE OVERALL MATERIAL SIZE MUST FALL WITHIN THE SPECIFIED RANGE. DRAIN ROCK SHALL BE FREE OF SHARP EDGES CAPABLE OF PUNCTURING LINER, OR NON-WOVEN GEOTEXTILE FABRIC (AS APPROVED BY LINER MANUFACTURER) SHALL BE USED TO PROTECT LINER. LINER MANUFACTURER SHALL APPROVE SUBGRADE PRIOR TO INSTALLATION OF LINER.

KNOTTED ROPE OR OTHER EMERGENCY EGRESS METHOD SHALL BE INSTALLED AROUND THE PERIMETER OF THE PIT LOCATED AND SPACED AS APPROVED BY THE OWNER.

VENT POCKET DETAIL

N.T.S.



"SHIRT POCKET" VENTS SHALL BE INSTALLED THROUGH BOTH PRIMARY AND SECONDARY LINES LOCATED AT 50' O.C. MAX. ALONG THE TOP OF INSIDE PERIMETER OF THE PONDS.