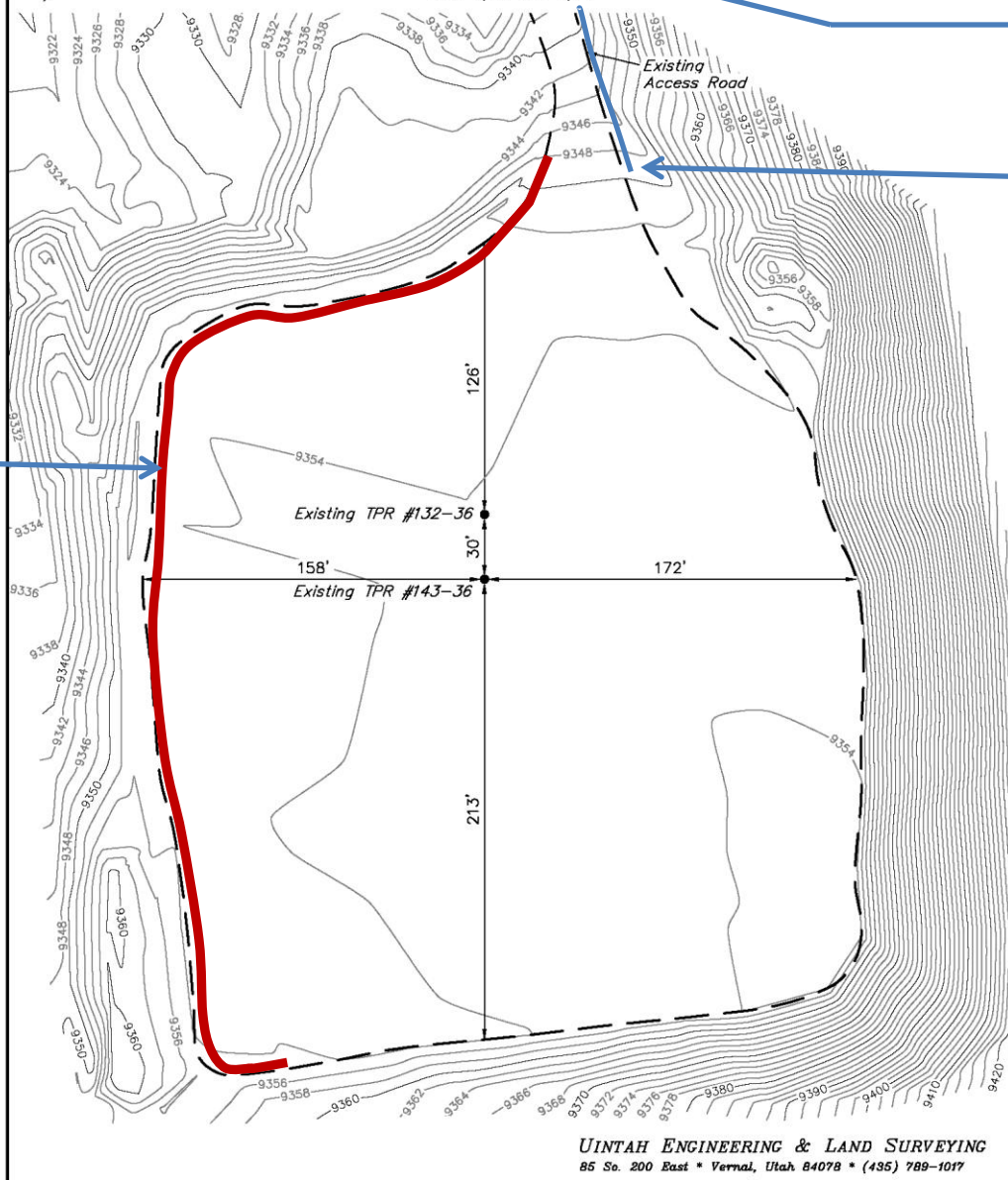
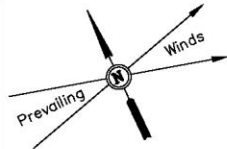


BLACK DIAMOND MINERALS, LLC

AS-BUILT SITE PLAN FOR

TPR #794-36A PAD
SECTION 36, T7S, R94W, 6th P.M.
SW 1/4 NE 1/4



Existing Sediment Trap, is
at roadside ditch,
approximately 100 feet
North of map

Existing Ditch

Proposed Earthen Berm

**Best Management
Practices Pad 36A**