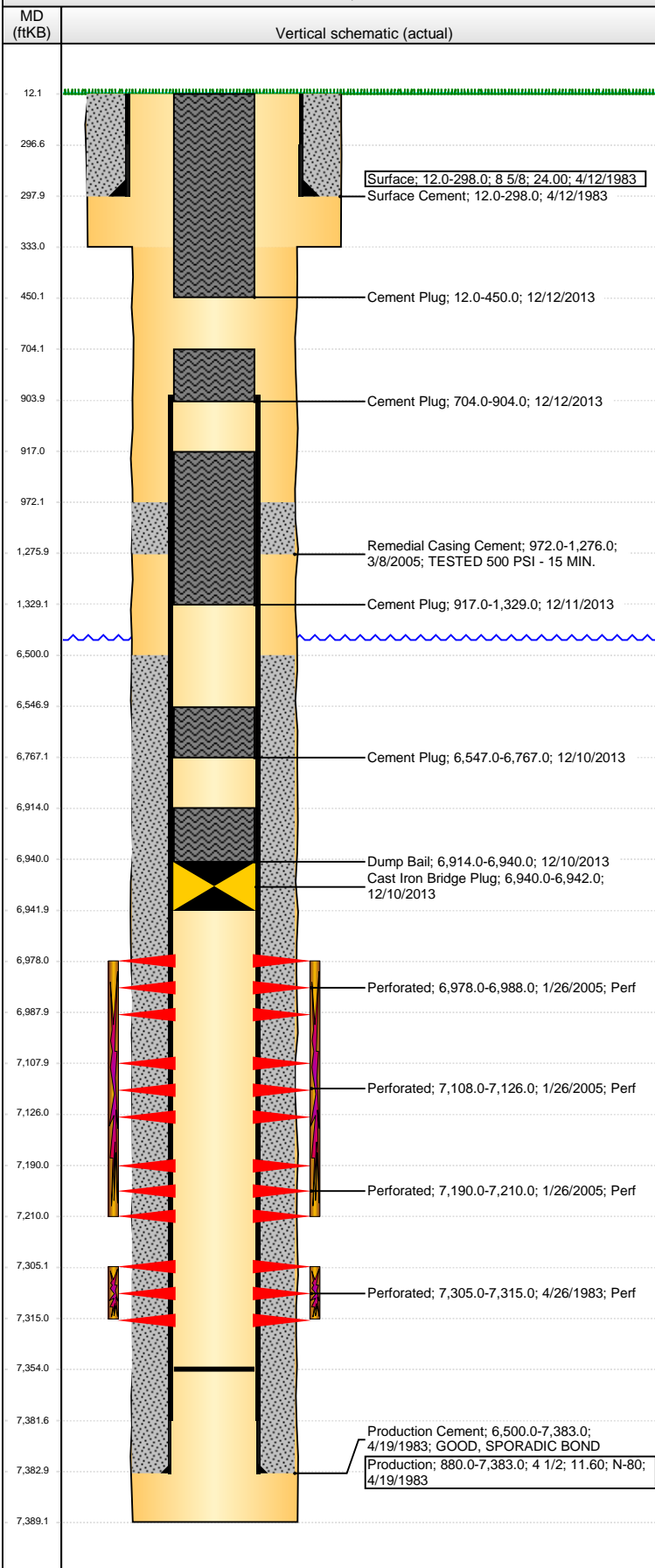


**Well Name: SEVERIN 01**

VERTICAL - ORIGINAL HOLE, 12/26/2013 12:37:03 PM



## Well Header

API 05-123-11141	Business Unit WATTENBERG	District 15	Well Config VERTICAL
Original KB Elevation (ft) 4,851.00	KB - GL / MSL (ftKB) 12.00	Spud Date 4/11/1983	P & A Date 12/12/2013

## Comment

3/05 - HIC BTWN 1190-1223 - RPR'D W/ 150 SXS CMT.

## Directions To Well

RD 29 & 72, E 3/10, N INTO.

## Congressional Location

Quarter 1	Quarter 2	Quarter 3	Quarter 4	Section	Township	Twnshp N...	Range	Rng E/W Dir
		SE	SW	4	6	N	66	W

## Bottom Hole Location

North-South Distance (ft)	From N or S Line	East-West Distance (ft)	From E or W Line

## Plug Back Total Depths

Date	Depth (ftKB)	Method	Com
11/6/2007	7,354.0		PLUG REMNANTS
12/2/2013	7,354.0	TAG	

## Wellbore Sections

Section Des	Size (in)	Act Top, MD (ftKB)	Act Btm, MD (ftKB)
SURFACE	12 1/4	12.0	333.0
PRODUCTION	7 7/8	333.0	7,389.0

## Zone Statuses

Zone Name	Status Date	Status	Job
NIOBRARA	3/14/2005	PR	RECOMPLETION, 1/26/2005 06:00
NIOBRARA	11/13/2007	PR	COMMINGLE ZONES, 11/6/2007 06:00
NIOBRARA	12/12/2013	P&A	ABANDON WELL, 12/10/2013 06:00
CODELL	5/4/1983	PR	DRILLING/COMPLETION - ORIGINAL, 4/11/1983 06:00
CODELL	1/26/2005	SI	RECOMPLETION, 1/26/2005 06:00
CODELL	11/13/2007	PR	COMMINGLE ZONES, 11/6/2007 06:00
CODELL	12/12/2013	P&A	ABANDON WELL, 12/10/2013 06:00

## Casing Strings

### Surface, 298.0ftKB

Casing Description	Run Date	OD (in)	Wt/Len (l...)	Grade	Top, MD (ft...)	MD (ftKB)
Surface	4/12/1983	8 5/8	24.00		12.0	298.0

### Production, 7,383.0ftKB

Casing Description	Run Date	OD (in)	Wt/Len (l...)	Grade	Top, MD (ft...)	MD (ftKB)
Production	4/19/1983	4 1/2	11.60	N-80	12.0	7,383.0

## Cement

Description	Top Depth (ftKB)	Bottom Depth (ftKB)
Surface Cement	12.0	298.0
Production Cement	6,500.0	7,383.0
Remedial Casing Cement	972.0	1,276.0
Cement Plug	6,547.0	6,767.0
Dump Bail	6,914.0	6,940.0
Cement Plug	917.0	1,329.0
Cement Plug	704.0	904.0
Cement Plug	12.0	450.0

## Tubing Components

Item Des	OD (in)	Wt (lb/ft)	Grade	Jts	Len (ft)	Btm (ftKB)	Btm (TVD) (ftKB)

## Perforation Data

Zone	Bnch/St g	Entered Shot Total	Top (ftKB)	Btm (ftKB)	Date
NIOBRARA, ORIGINAL HOLE		60	6,978.00	6,988.00	1/26/2005
NIOBRARA, ORIGINAL HOLE		108	7,108.00	7,126.00	1/26/2005
NIOBRARA, ORIGINAL HOLE		120	7,190.00	7,210.00	1/26/2005
CODELL, ORIGINAL HOLE		30	7,305.00	7,315.00	4/26/1983

**Well Name: SEVERIN 01**

VERTICAL - ORIGINAL HOLE, 12/26/2013 12:37:04 PM

## Stimulations & Treatments

Date 4/27/1983	Zone CODELL, ORIGINAL HOLE	Primary Job Type DRILLING/COMPLETION - ORIGINAL
Technical Result	Tech Result Details	Tech Result Note
Comment		

Date 2/9/2005	Zone CODELL, ORIGINAL HOLE	Primary Job Type RECOMPLETION
Technical Result Failure	Tech Result Details Screen-out	Tech Result Note
Comment Casing Failure		

## Other In Hole

Run Date	Des	OD (in)	Top (ftKB)	Btm (ftKB)
12/10/2013	Cast Iron Bridge Plug	3.99	6,940.0	6,942.0

## Logs

Date	Type	Top, MD (ftKB)	Btm, MD (ftKB)
4/19/1983	COMPENSATED DENSITY	4,450.0	7,385.0
4/19/1983	INDUCTION	298.0	7,383.0
4/25/1983	CBL/CCL/GR	6,300.0	7,338.0
12/9/2013	CBL/CCL/GR	50.0	1,550.0

