

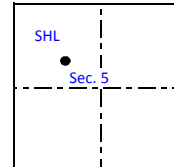
CCI Paradox Upstream, LLC

REV.	DATE	<p>PROPOSED PLUG & ABANDONMENT WELLBORE SCHEMATIC</p> <p>South Nucla Unit 5-22</p> <p>API No. 05-085-06046</p> <p>SHL: 2,073' FNL 1,892' FWL (SENW) Sec. 5 T46N R14W</p> <p>Unable to determine BHL from State records on file</p> <p>Montrose County, Colorado</p>	DRAWN	C. Noonan	
			APP'D	J. Warren	
			SCALE	Drawn to Scale	
			DATE	11/25/2013	
		1 of 1	SHEETS	SHEET	1

SPUD DATE
November 9, 2007

Original lease operated by now insolvent Redwine Resources
CCI agrees to plugging liability as largest remaining interest holder

AERIAL WELL LOCATION



ELEVATION
Ground - 6,064'

REDWINE RESOURCES
FORMATION TOPS

Surface Form.
0' - Projected

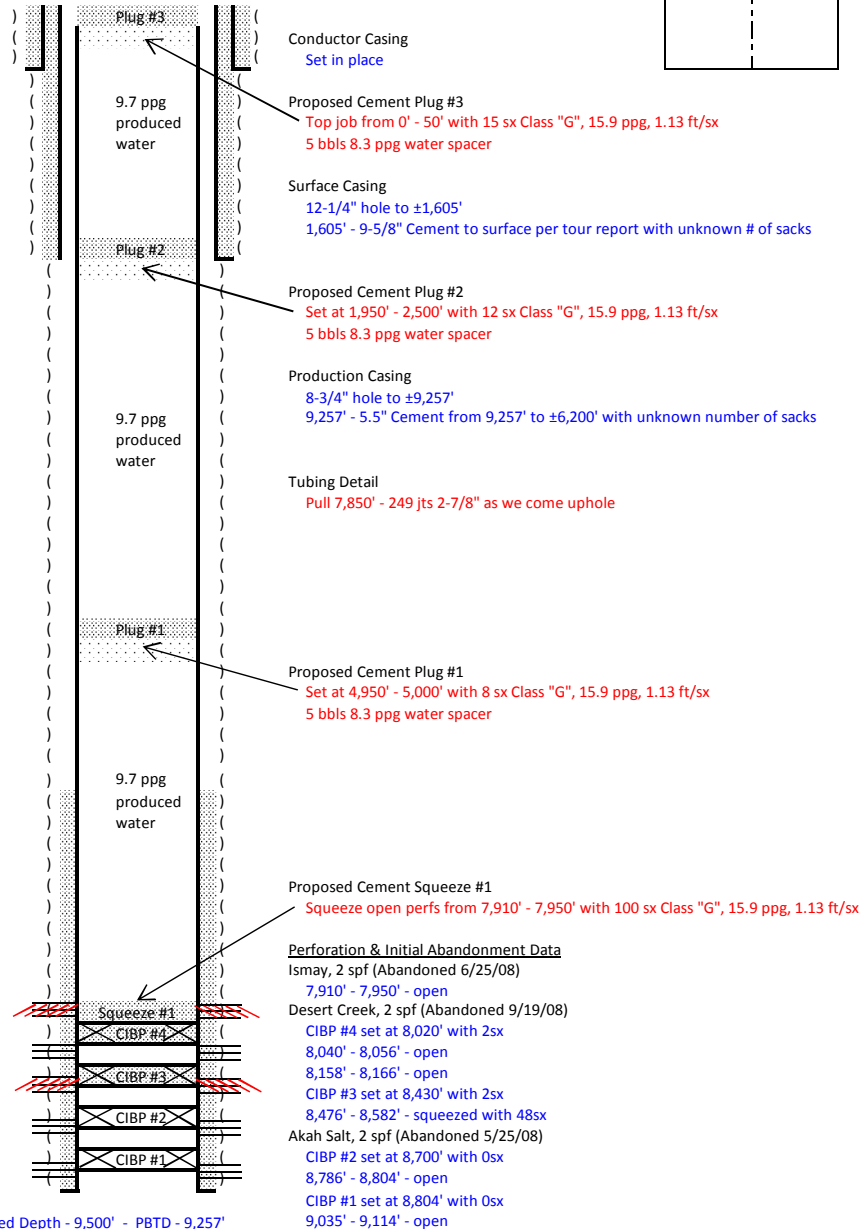
CONDUCTOR CASING
Unable to determine size/grade

SURFACE CASING
9-5/8" 36# J-55 ST&C

PRODUCTION CASING
5-1/2" 17# P-110 LT&C

TUBING
2-7/8" 6.5# L-80

Cut off csg below ground
P&A Plate Welded On



Tops taken from Redwine WCR on file with COGCC

Please note:
Existing well features in black
Key well features in blue
Operational changes in red