

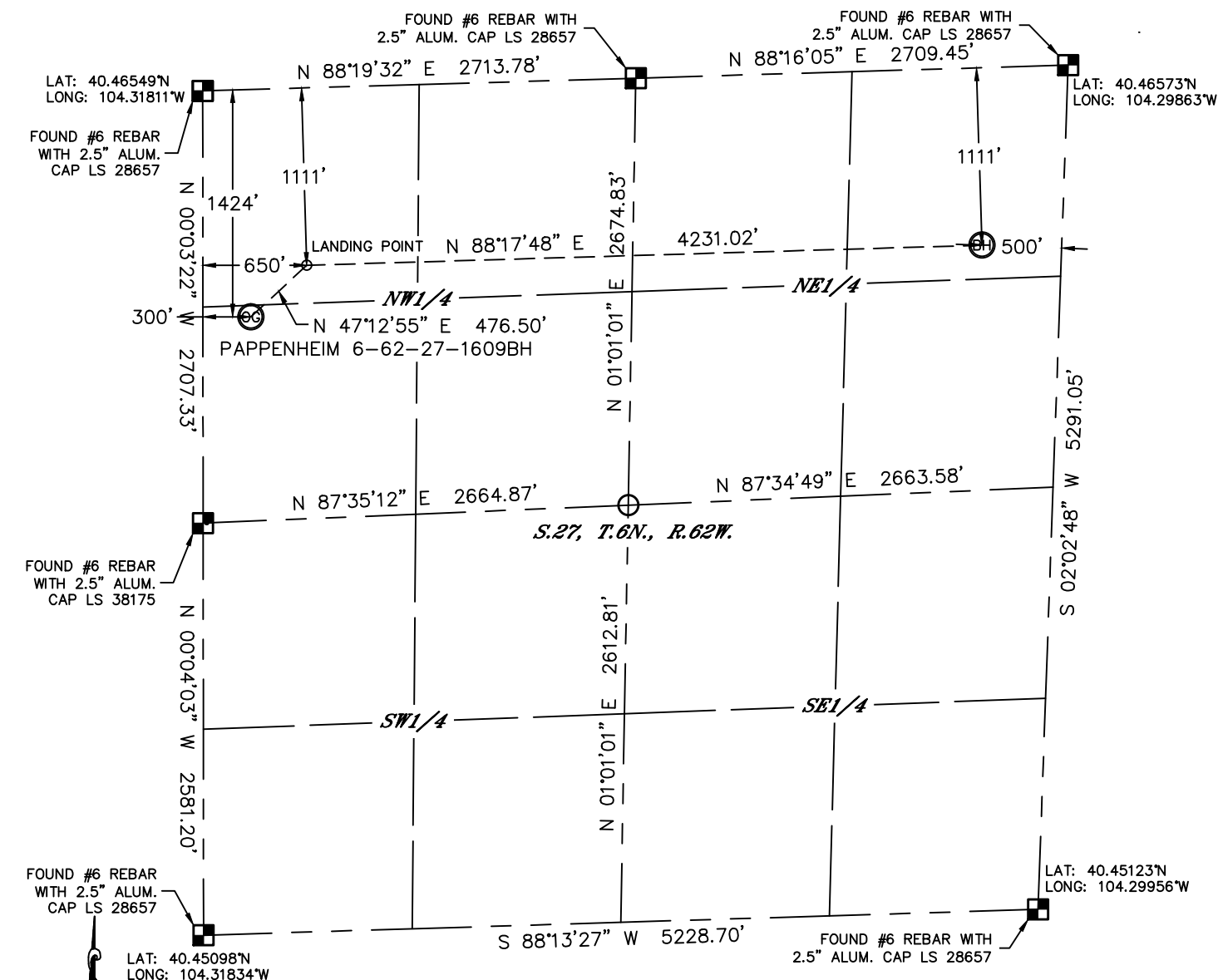


Lat40°, Inc. 1635 Foxtrail Drive, Suite 325 Loveland, CO 970-776-3321

# WELL LOCATION CERTIFICATE

THIS MAP DOES NOT REPRESENT A BOUNDARY SURVEY

SECTION: 27  
TOWNSHIP: 6N  
RANGE: 62W



In accordance with a request from Jeff Fandrich with BILL BARRETT CORPORATION Lat40°, Inc. has determined the surface location of the PAPPENHEIM 6-62-27-1609BH to be 1424' from the NORTH line and 300' from the WEST line and the bottom hole to be 1111' from the NORTH line and 500' from the EAST line as measured at right angles from the section lines of Section 27, Township 6 North, Range 62 West of the Sixth Principal Meridian, County of Weld, State of Colorado.

I hereby state that this Well Location Certificate was prepared by me, or under my direct supervision, that the fieldwork was completed on 12/18/2013, for and on behalf of BILL BARRETT CORPORATION That this is not a Land Survey Plat or an Improvement Survey Plat, and that it is not to be relied upon for establishment of fence, building, or other future improvement lines.

#### NOTE:

- 1) Bearings shown are Grid Bearings of the Colorado State Plane Coordinate System, North Zone, North American Datum 1983/2007. The lineal dimensions as contained herein are based upon the "U.S. Survey Foot."
  - 2) Ground elevations are based on an observed GPS elevation (NAVD 1988 DATUM).
  - 3) IMPROVEMENTS: See LOCATION DRAWING for all visible improvements within 500' of disturbed area.
  - 4) SURFACE USE: EXISTING WELL PAD
  - 5) INSTRUMENT OPERATOR: MARK ANGELL
  - 6) NEAREST EXISTING WELL: PAPPENHEIM 6-62-27-0108BH, 158' NW
- NEAREST CULTURAL ITEMS:  
BUILDING: ±2485' NE  
BUILDING UNIT: ±2716' NE  
HIGH OCCUPANCY BUILDING UNIT: 5280'+  
DESIGNATED OUTSIDE ACTIVITY AREA: 5280'+  
PUBLIC ROAD: ±2516' NE (WCR 79.75)  
ABOVEGROUND UTILITY: 5280'+  
RAILROAD: 5280'+  
PROPERTY LINE: 300' WEST

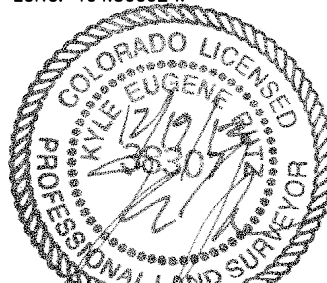
SURFACE LOCATION  
LAT: 40.46159°N  
LONG: 104.31710°W  
PDOP: 2.1  
ELEV: 4750'  
1/4,1/4: SW1/4NW1/4

LANDING POINT  
LAT: 40.46247°N  
LONG: 104.31582°W

BOTTOM HOLE  
LAT: 40.46265°N  
LONG: 104.30062°W

#### LEGEND

- = ALIQUOT MONUMENT AS DESCRIBED  
○ = CALCULATED POSITION



Kyle E. Rutz—On behalf of Lat40°, Inc.  
Colorado Licensed Professional  
Land Surveyor No. 38307

DATE: 12/19/2013  
PROJECT#: 2013018

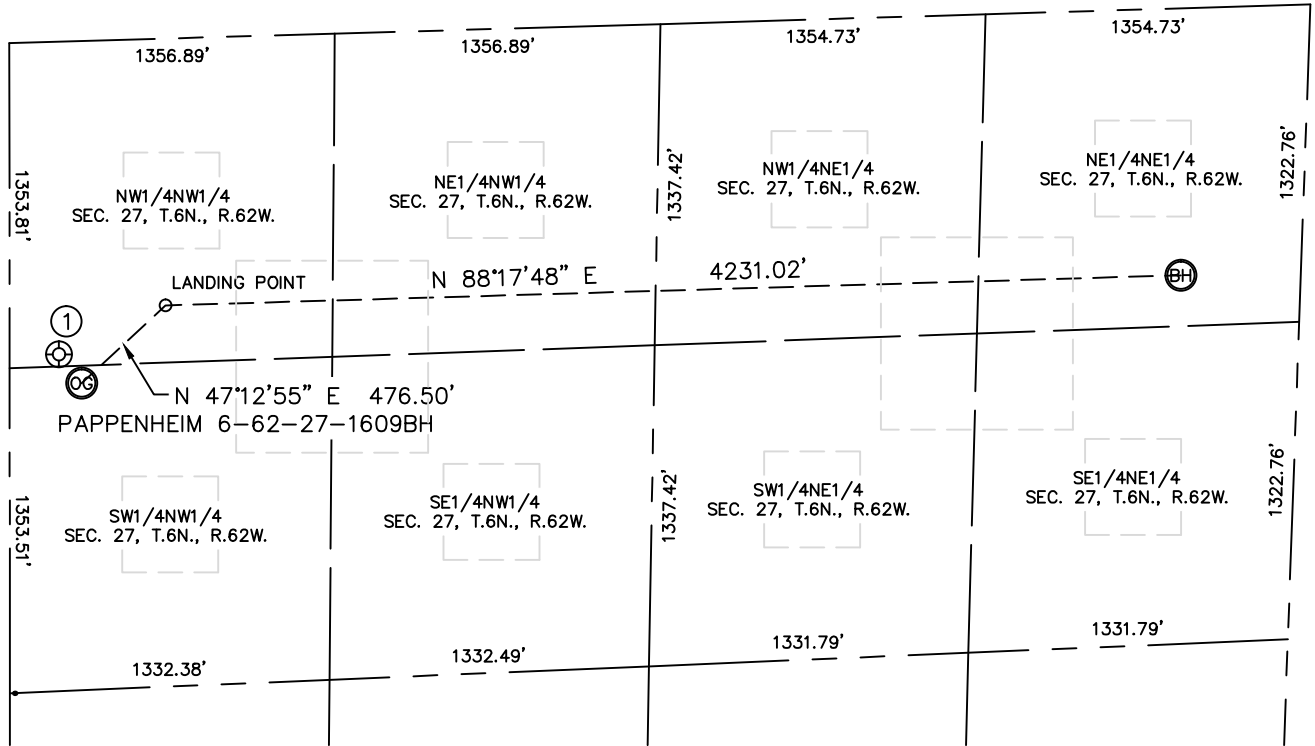


Lat40°, Inc. 1635 Foxtrail Drive, Suite 325 Loveland, CO 970-776-3321

# SITE SKETCH

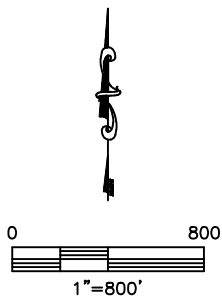
PAPPENHEIM 6-62-27-1609BH

SECTION: 27  
TOWNSHIP: 6N  
RANGE: 62W



①

PAPPENHEIM 6-62-27-0108BH  
NW1/4NW1/4  
1302' FNL  
206' FWL  
LAT-40.46192°N  
LONG-104.31743°W  
PDOP: 3.2  
ELEV: 4750'



DATE: 12/19/2013  
PROJECT#: 2013018