





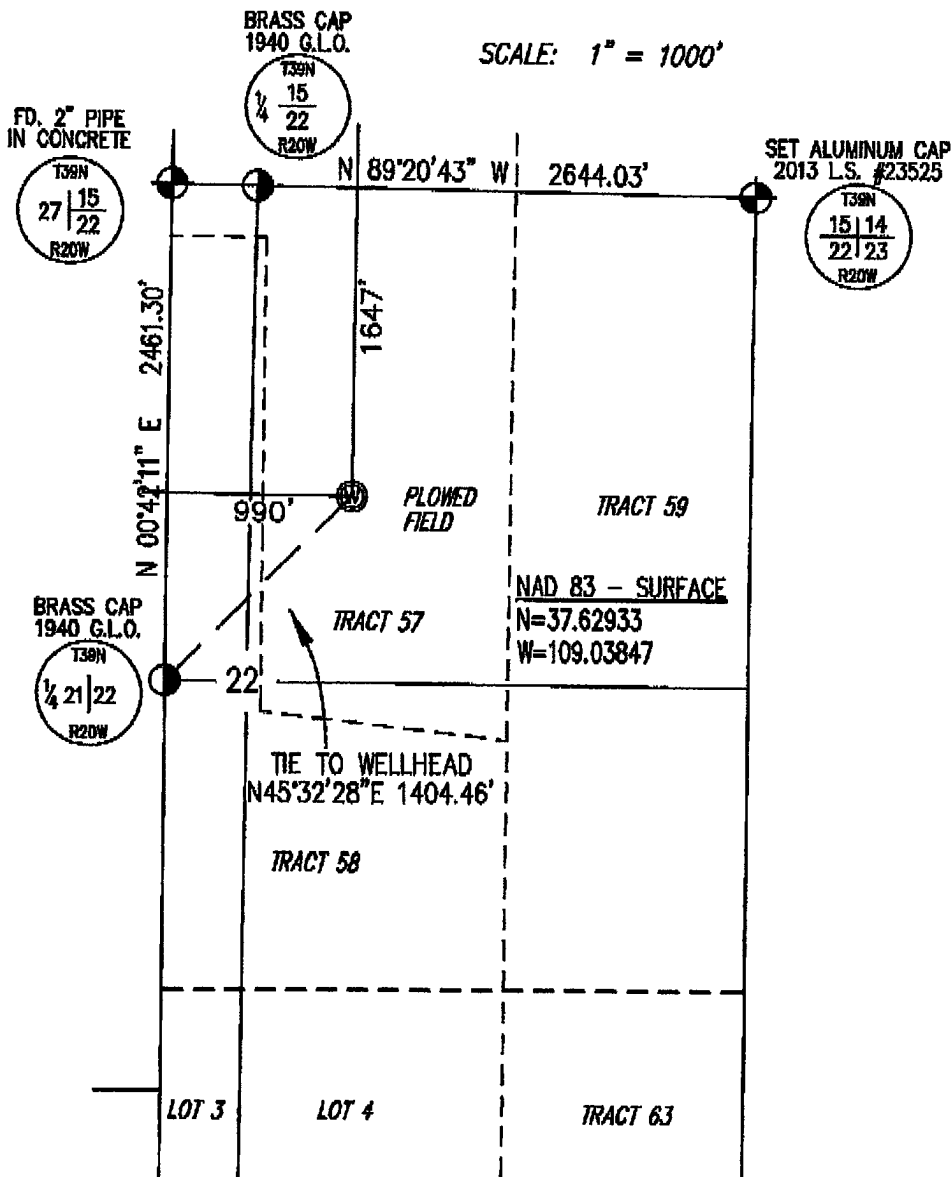
# COLORADO WELL LOCATION PLAT

OPERATOR DJ SIMMONS INC.  
 LEASE State Line Well WELL NO. 22-2  
 SECTION 22 TOWNSHIP 39 NORTH RANGE 20 WEST N.M.P.M.  
 COUNTY DOLORES COLORADO  
 FOOTAGE LOCATION OF WELL: 1647 FEET FROM THE North LINE and  
990 FEET FROM THE West LINE and  
 GROUND LEVEL ELEVATION: 6584'  
 SURFACE USE WITHIN 200' RADIUS: PLOWED FIELD  
 BASIS OF BEARING: GPS Data  
 BASIS OF ELEVATION: GPS Data - NAD 83 - PDOP #1.8

500' 500'  
 1" = 1000'

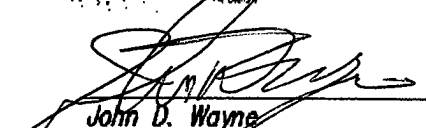
Some information on this plat is based on information taken from previous surveys, record information, or collateral evidence and may not reflect that which may be disclosed by a complete boundary survey. This plat is not to be relied on for the establishment of surface boundaries, fences, buildings, or other future improvements.

-  Section Corner
-  Quarter Corner
-  STONE Marked
-  WELL Location



I hereby certify that the proposed well location shown on this plat was prepared from field notes of an actual survey by me or under my supervision, and that the same is true and correct to the best of my knowledge and belief, and that there are no visible improvements within 200 feet of this proposed wellhead, unless noted otherwise.



  
 John D. Wayne  
 Professional L.S. #23525  
 State of Colorado  
 RESTAKE 12/19/2013  
 JULY 10, 2013  
 Date Surveyed:  
 DECEMBER 19, 2013  
 Date Platted: