



Gyrodata Incorporated
301 Thelma Dr. #413
Casper, Wyoming 82601

307-472-0182
Fax: 307-472-0204

SURVEY REPORT
High Sierra Water Services, LLC
SWD #C7B
KDC #2
Weld County, Colorado
RD1013DRM161

15 Nov 2013



Gyrodata Incorporated
301 Thelma Dr. #413
Casper, Wyoming 82601

307-472-0182
Fax: 307-472-0204

November 19, 2013

High Sierra Water Services, LLC
Attn: Bill Minnett
8207 W 20th St.
Suite B
Greely, CO 80634

Re: **SWD #C7B**
Weld County, Colorado

Enclosed, please find one (1) original and one (1) disk of the completed survey for the above referenced well.

We would like to take this opportunity to thank you for using Gyrodata, and we look forward to serving you in the future.

Sincerely,

A handwritten signature in blue ink, appearing to read "Kris Bertsch".

Kristopher Bertsch
MWD Coordinator



Gyrodata Incorporated
301 Thelma Dr. #413
Casper, Wyoming 82601

307-472-0182
Fax: 307-472-0204

DIRECTIONAL SURVEY CERTIFICATION

RE: _____ High Sierra Water Services _____ (Operator)

_____ SWD #C7B _____ (Well Name & No.)

_____ 8.37 _____ (Magnetic Declination)

Surveyor: Josh Deavereaux

I, Kristopher Bertsch, having personal knowledge of all the facts, hereby certify that the attached directional survey run from measured depth of 474 feet to a measured depth of 10,163 feet and is projected to 10,164 feet, is true and correct as determined from all available records.


Signature

MWD Coordinator
Title

Gyrodata, Inc.
Company

*All measurements recorded with a manned MWD tool.

A Gyrodata Directional Survey

FINAL DEFINITIVE COPY

for

HIGH SIERRA WATER SERVICES, LLC

Lease: SWD Well: #C7B, 8 3/4" Hole

Location: KDC #2, Weld County, Colorado

Job Number: RD1013DRM161

Run Date: 2 Oct 2013 to 31 Oct 2013

Surveyor: Josh Devereaux

Calculation Method: MINIMUM CURVATURE

Survey surface coordinates obtained from: Well Plan/Plot

Survey Latitude: 40.524140 deg. N Longitude: 104.414380 deg. W

Magnetic Declination: 8.3700 deg

Total Correction: 8.3700 deg

Depth Reference: Rotary Table

Air Gap (RKB to Ground / RKB to MSL): 17.00

Ground Elevation (Ground to MSL / MSL to Mudline): 4715.00

Vertical Section Calculated from Well Head Location

Closure Calculated from Well Head Location

Horizontal Coordinates Calculated from Well Head Location

A Gyrodata Directional Survey

High Sierra Water Services, LLC
 Lease: SWD Well: #C7B, 8 3/4" Hole
 Location: KDC #2, Weld County, Colorado
 Job Number: RD1013DRM161

MEASURED DEPTH feet	I N C L AZIMUTH deg.	DOGLEG SEVERITY deg./ 100 ft.	VERTICAL DEPTH feet	CLOSURE DIST. AZIMUTH feet deg.	HORIZONTAL COORDINATES feet
474.00	0.54	231.36	0.00	4.4 220.9	3.31 S 2.87 W

ALL AZIMUTHS ARE REFERENCED TO TRUE NORTH.
 TIE-IN TO GYRO SURVEYS OF SURFACE HOLE AT 474 FT. MD.
 ALL MEASURED DEPTHS AND COORDINATES REFERENCED TO KAUFFMAN RIG 2
 474-10163 FT. MAGNETIC MEASUREMENT WHILE DRILLING SURVEY
 STRAIGHT LINE PROJECTION TO BIT DEPTH AT 10164 FT. MD.

587.00	0.40	205.86	0.22	5.3 220.9	4.00 S 3.46 W
617.00	0.40	47.39	2.62	5.3 220.4	4.02 S 3.43 W
647.00	0.66	8.72	1.43	5.0 221.3	3.78 S 3.32 W
678.00	0.79	7.67	0.42	4.7 223.9	3.39 S 3.27 W
709.00	0.79	359.32	0.37	4.4 227.5	2.97 S 3.24 W
739.00	0.75	3.62	0.23	4.1 231.6	2.56 S 3.23 W
769.00	0.88	5.56	0.44	3.8 236.2	2.14 S 3.20 W
800.00	0.75	358.53	0.53	3.6 241.9	1.70 S 3.18 W
830.00	0.79	7.32	0.42	3.4 247.7	1.30 S 3.16 W
861.00	0.70	7.84	0.29	3.2 253.9	0.90 S 3.10 W
892.00	0.84	10.30	0.46	3.1 260.9	0.49 S 3.04 W
922.00	0.79	3.01	0.38	3.0 268.8	0.06 S 2.99 W
953.00	0.70	350.53	0.60	3.0 276.4	0.34 N 3.01 W
983.00	0.92	348.95	0.74	3.2 283.8	0.75 N 3.08 W
1014.00	2.02	357.82	3.61	3.5 296.1	1.55 N 3.15 W

A Gyrodata Directional Survey

High Sierra Water Services, LLC
 Lease: SWD Well: #C7B, 8 3/4" Hole
 Location: KDC #2, Weld County, Colorado
 Job Number: RD1013DRM161

MEASURED DEPTH feet	INCL deg.	AZIMUTH deg.	DOGLEG SEVERITY deg./ 100 ft.	VERTICAL DEPTH feet	CLOSURE DIST. feet	AZIMUTH deg.	HORIZONTAL COORDINATES feet
1044.00	3.08	359.23	3.54	1043.90	4.3	312.1	2.88 N
1075.00	4.26	4.85	3.97	1074.84	5.8	327.5	4.86 N
1105.00	5.23	6.44	3.26	1104.74	7.9	338.7	7.33 N
1135.00	5.85	6.00	2.07	1134.60	10.5	346.0	10.21 N
1166.00	7.12	6.17	4.10	1165.40	13.9	351.0	13.69 N
1197.00	8.44	6.00	4.26	1196.11	17.9	354.5	17.86 N
1228.00	9.58	6.17	3.68	1226.73	22.7	357.0	22.69 N
1259.00	10.42	6.88	2.74	1257.26	28.0	358.8	28.04 N
1290.00	11.16	5.56	2.52	1287.71	33.8	0.1	33.81 N
1321.00	11.96	5.82	2.59	1318.08	40.0	0.9	39.99 N
1353.00	12.44	5.47	1.52	1349.36	46.7	1.6	46.72 N
1384.00	13.71	7.49	4.35	1379.55	53.7	2.3	53.68 N
1415.00	14.68	9.25	3.42	1409.61	61.3	3.0	61.20 N
1446.00	15.16	8.99	1.56	1439.56	69.2	3.7	69.08 N
1477.00	15.38	7.67	1.33	1469.47	77.4	4.2	77.16 N
1508.00	15.91	6.52	1.98	1499.32	85.7	4.5	85.46 N
1539.00	16.75	6.00	2.75	1529.07	94.4	4.6	94.12 N
1569.00	17.01	5.82	0.88	1557.77	103.1	4.8	102.79 N
1600.00	16.22	5.38	2.58	1587.48	112.0	4.8	111.61 N
1631.00	15.87	5.82	1.20	1617.27	120.6	4.9	120.13 N
1663.00	15.69	5.73	0.57	1648.07	129.3	4.9	128.79 N
							11.12 E
							6.70 E
							7.65 E
							8.55 E
							9.41 E
							10.25 E
							1.31 E
							2.11 E
							3.22 E
							4.49 E
							5.67 E

High Sierra Water Services, LLC
Lease: SWD Well: #C7B, 8 3/4" Hole
Location: KDC #2, Weld County, Colorado
Job Number: RD1013DRM161

4

A Gyrodata Directional Survey

High Sierra Water Services, LLC
 Lease: SWD Well: #C7B, 8 3/4" Hole
 Location: KDC #2, Weld County, Colorado
 Job Number: RD1013DRM161

MEASURED DEPTH feet	I N C L AZIMUTH deg.	DOGLEG SEVERITY deg./ 100 ft.	VERTICAL DEPTH feet	CLOSURE DIST. AZIMUTH feet deg.	HORIZONTAL COORDINATES feet
2380.00	16.26	0.90	2335.69	332.3 5.6	330.75 N 32.58 E
2411.00	16.70	1.42	2365.41	341.1 5.7	339.48 N 33.59 E
2442.00	16.35	1.23	2395.13	350.0 5.7	348.25 N 34.57 E
2474.00	16.66	0.97	2425.81	359.0 5.7	357.29 N 35.54 E
2505.00	16.70	0.15	2455.51	367.9 5.7	366.13 N 36.49 E
2536.00	16.70	0.49	2485.20	376.9 5.7	374.99 N 37.47 E
2567.00	16.53	0.55	2514.91	385.7 5.7	383.79 N 38.50 E
2599.00	16.79	0.81	2545.57	394.9 5.8	392.90 N 39.57 E
2630.00	16.62	0.57	2575.26	403.8 5.8	401.75 N 40.59 E
2661.00	16.62	0.56	2604.96	412.7 5.8	410.57 N 41.55 E
2693.00	16.57	0.88	2635.63	421.8 5.8	419.65 N 42.57 E
2724.00	16.75	1.21	2665.33	430.7 5.8	428.48 N 43.55 E
2755.00	16.48	1.00	2695.03	439.6 5.8	437.30 N 44.47 E
2786.00	16.88	1.29	2724.73	448.5 5.8	446.15 N 45.44 E
2817.00	16.53	1.20	2754.42	457.4 5.8	455.00 N 46.45 E
2848.00	16.79	0.93	2784.12	466.3 5.8	463.83 N 47.45 E
2879.00	16.70	0.65	2813.80	475.2 5.9	472.70 N 48.47 E
2910.00	16.57	0.78	2843.51	484.1 5.9	481.52 N 49.48 E
2942.00	16.88	0.97	2874.15	493.3 5.9	490.67 N 50.47 E
2973.00	16.13	2.42	2903.88	502.1 5.9	499.43 N 51.42 E
3004.00	16.75	2.00	2933.61	510.8 5.9	508.15 N 52.39 E
3035.00	16.53	0.75	2963.31	519.7 5.9	516.97 N 53.39 E

A Gyrodata Directional Survey

High Sierra Water Services, LLC
 Lease: SWD Well: #C7B, 8 3/4" Hole
 Location: KDC #2, Weld County, Colorado
 Job Number: RD1013DRM161

MEASURED DEPTH	deg.	deg.	DOGLEG SEVERITY	VERTICAL DEPTH	CLOSURE DIST.	HORIZONTAL COORDINATES
feet			deg./ 100 ft.	feet	feet deg.	feet
3066.00	16.31	5.91	0.95	2993.05	528.5	525.68 N
3097.00	16.57	6.44	0.97	3022.78	537.3	534.40 N
3129.00	16.84	6.35	0.85	3053.43	546.5	543.54 N
3160.00	16.57	7.05	1.09	3083.12	555.4	552.39 N
3192.00	16.62	6.35	0.64	3113.79	564.5	561.47 N
3223.00	16.35	5.47	1.19	3143.51	573.3	570.22 N
3254.00	16.22	5.91	0.58	3173.27	582.0	578.87 N
3285.00	16.40	6.61	0.86	3203.02	590.7	587.52 N
3317.00	16.00	5.47	1.60	3233.75	599.6	596.40 N
3348.00	14.86	4.94	3.71	3263.63	607.9	604.62 N
3380.00	14.42	4.77	1.38	3294.59	616.0	612.67 N
3411.00	14.20	4.50	0.74	3324.63	623.6	620.31 N
3443.00	13.80	4.41	1.25	3355.68	631.4	628.03 N
3474.00	13.76	4.06	0.30	3385.79	638.7	635.39 N
3505.00	14.20	4.24	1.43	3415.87	646.2	642.86 N
3537.00	14.64	5.21	1.57	3446.86	654.2	650.80 N
3568.00	15.60	5.12	3.10	3476.79	662.3	658.86 N
3599.00	16.35	6.35	2.65	3506.59	670.8	667.35 N
3630.00	16.26	6.17	0.33	3536.35	679.5	676.00 N
3661.00	16.62	6.35	1.17	3566.08	688.3	684.72 N
3692.00	16.22	6.08	1.31	3595.81	697.0	693.43 N
						70.91 E
						66.48 E
						67.20 E
						68.06 E
						69.01 E
						69.96 E

A Gyrodata Directional Survey

High Sierra Water Services, LLC
 Lease: SWD Well: #C7B, 8 3/4" Hole
 Location: KDC #2, Weld County, Colorado
 Job Number: RD1013DRM161

MEASURED DEPTH	INCL	AZIMUTH	DOGLEG SEVERITY	VERTICAL DEPTH	CLOSURE DIST.	AZIMUTH deg.	HORIZONTAL COORDINATES feet
feet	deg.	deg.	deg./ 100 ft.	feet	feet	deg.	feet
3724.00	16.44	5.56	0.83	3626.52	706.0	5.8	702.38 N 71.83 E
3755.00	16.44	6.17	0.56	3656.26	714.8	5.8	711.11 N 72.72 E
3786.00	16.40	5.82	0.34	3685.99	723.6	5.8	719.82 N 73.64 E
3818.00	16.44	6.35	0.48	3716.69	732.6	5.8	728.82 N 74.60 E
3849.00	16.44	5.73	0.57	3746.42	741.4	5.8	737.54 N 75.52 E
3881.00	16.31	6.17	0.56	3777.12	750.4	5.8	746.51 N 76.45 E
3912.00	16.57	6.35	0.85	3806.85	759.2	5.9	755.24 N 77.41 E
3943.00	16.40	5.82	0.73	3836.58	768.0	5.9	763.98 N 78.34 E
3974.00	16.31	6.00	0.33	3866.32	776.7	5.9	772.67 N 79.24 E
4006.00	16.40	5.29	0.69	3897.03	785.7	5.9	781.63 N 80.13 E
4038.00	16.22	5.73	0.68	3927.74	794.7	5.8	790.58 N 80.99 E
4069.00	16.35	5.56	0.45	3957.50	803.4	5.8	799.23 N 81.85 E
4100.00	16.44	6.00	0.49	3987.24	812.2	5.8	807.93 N 82.73 E
4131.00	16.09	6.08	1.13	4017.00	820.8	5.8	816.57 N 83.64 E
4163.00	16.26	5.73	0.61	4047.73	829.8	5.8	825.43 N 84.56 E
4193.00	16.22	5.91	0.21	4076.53	838.1	5.8	833.78 N 85.41 E
4225.00	16.09	5.56	0.51	4107.27	847.0	5.8	842.64 N 86.30 E
4256.00	16.13	5.73	0.20	4137.05	855.6	5.8	851.20 N 87.14 E
4287.00	16.04	5.56	0.33	4166.84	864.2	5.8	859.75 N 87.99 E
4318.00	15.74	6.08	1.07	4196.65	872.7	5.8	868.19 N 88.85 E
4350.00	15.91	5.82	0.58	4227.44	881.5	5.8	876.87 N 89.75 E
4381.00	16.13	5.82	0.71	4257.24	890.0	5.8	885.38 N 90.62 E

A Gyrodata Directional Survey

High Sierra Water Services, LLC
 Lease: SWD Well: #C7B, 8 3/4" Hole
 Location: KDC #2, Weld County, Colorado
 Job Number: RD1013DRM161

MEASURED DEPTH	IN CL	AZIMUTH	DOGLEG SEVERITY	VERTICAL DEPTH	CLOSURE DIST.	AZIMUTH	HORIZONTAL COORDINATES
feet	deg.	deg.	deg./ 100 ft.	feet	feet	deg.	feet
4413.00	16.22	5.29	0.54	4287.97	898.9	5.8	894.25 N
4444.00	16.35	5.73	0.58	4317.73	907.6	5.8	902.91 N
4475.00	16.26	4.94	0.77	4347.48	916.3	5.8	911.57 N
4507.00	16.18	6.00	0.96	4378.21	925.3	5.8	920.47 N
4538.00	16.31	5.47	0.64	4407.97	933.9	5.8	929.10 N
4569.00	15.87	6.17	1.55	4437.75	942.5	5.8	937.65 N
4601.00	15.74	6.79	0.67	4468.54	951.2	5.8	946.31 N
4632.00	16.09	6.17	1.26	4498.36	959.7	5.8	954.75 N
4663.00	16.04	5.73	0.42	4528.15	968.3	5.8	963.28 N
4695.00	16.00	5.21	0.47	4558.90	977.1	5.8	972.07 N
4726.00	15.82	5.21	0.58	4588.72	985.6	5.8	980.54 N
4757.00	16.22	5.21	1.29	4618.51	994.2	5.8	989.06 N
4789.00	16.26	5.91	0.62	4649.23	1003.1	5.8	997.96 N
4820.00	16.22	5.47	0.42	4679.00	1011.8	5.8	1006.59 N
4851.00	16.13	5.03	0.49	4708.77	1020.4	5.8	1015.19 N
4883.00	15.82	5.91	1.23	4739.53	1029.3	5.8	1023.96 N
4914.00	15.69	6.44	0.63	4769.37	1037.7	5.8	1032.33 N
4945.00	15.65	5.91	0.48	4799.22	1046.0	5.8	1040.65 N
4977.00	15.25	5.29	1.35	4830.06	1054.6	5.8	1049.13 N
5008.00	15.56	7.58	2.20	4859.95	1062.8	5.8	1057.31 N
5039.00	16.04	11.09	3.45	4889.78	1071.2	5.9	1065.64 N
5070.00	17.01	14.52	4.44	4919.50	1080.0	5.9	1074.23 N
							106.10 E
							106.93 E
							107.86 E
							109.23 E
							111.19 E

A Gyrodata Directional Survey

High Sierra Water Services, LLC
 Lease: SWD Well: #C7B, 8 3/4" Hole
 Location: KDC #2, Weld County, Colorado
 Job Number: RD1013DRM161

MEASURED DEPTH	deg.	deg.	INCL	DOGLEG SEVERITY	VERTICAL DEPTH	CLOSURE DIST.	AZIMUTH deg.	HORIZONTAL COORDINATES feet
feet				deg./ 100 ft.	feet	feet	deg.	feet
5101.00	18.11	17.69		4.70	4949.05	1089.2	6.0	1083.21 N
5132.00	19.12	20.67		4.47	4978.43	1098.8	6.1	1092.55 N
5164.00	19.25	23.40		2.83	5008.65	1108.9	6.3	1102.30 N
5195.00	17.45	22.78		5.84	5038.08	1118.3	6.4	1111.27 N
5226.00	14.15	17.95		11.45	5067.90	1126.4	6.5	1119.17 N
5258.00	12.75	12.15		6.07	5099.03	1133.8	6.6	1126.34 N
5289.00	12.26	9.51		2.43	5129.29	1140.5	6.6	1132.93 N
5320.00	12.53	10.30		1.03	5159.57	1147.1	6.6	1139.49 N
5352.00	12.31	8.90		1.17	5190.82	1154.0	6.6	1146.27 N
5383.00	11.96	6.35		2.06	5221.13	1160.5	6.6	1152.73 N
5414.00	12.35	3.71		2.19	5251.43	1167.0	6.6	1159.23 N
5445.00	12.40	2.04		1.17	5281.71	1173.7	6.6	1165.86 N
5476.00	12.75	1.78		1.14	5311.97	1180.4	6.6	1172.61 N
5507.00	12.97	4.06		1.78	5342.19	1187.3	6.6	1179.50 N
5538.00	12.75	5.82		1.45	5372.41	1194.2	6.6	1186.37 N
5569.00	12.79	6.70		0.64	5402.65	1201.0	6.5	1193.18 N
5601.00	13.05	7.05		0.85	5433.84	1208.2	6.6	1200.29 N
5632.00	13.10	7.93		0.66	5464.03	1215.2	6.6	1207.24 N
5663.00	12.88	6.52		1.24	5494.24	1222.2	6.6	1214.15 N
5695.00	13.01	5.38		0.90	5525.43	1229.3	6.6	1221.28 N
5726.00	12.48	3.01		2.40	5555.66	1236.2	6.5	1228.10 N
								140.88 E

A Gyrodata Directional Survey

High Sierra Water Services, LLC
 Lease: SWD Well: #C7B, 8 3/4" Hole
 Location: KDC #2, Weld County, Colorado
 Job Number: RD1013DRM161

MEASURED DEPTH	IN C L	AZIMUTH	DOGLEG SEVERITY	VERTICAL DEPTH	CLOSURE DIST.	AZIMUTH deg.	HORIZONTAL COORDINATES feet
feet	deg.	deg.	deg./ 100 ft.	feet	feet	deg.	feet
5757.00	12.31	3.89	0.82	5585.94	1242.8	6.5	1234.74 N 141.28 E
5789.00	11.65	3.36	2.09	5617.24	1249.4	6.5	1241.37 N 141.70 E
5820.00	11.47	2.31	0.89	5647.61	1255.6	6.5	1247.58 N 142.01 E
5851.00	11.91	1.69	1.48	5677.97	1261.9	6.5	1253.85 N 142.23 E
5882.00	12.00	0.64	0.76	5708.30	1268.3	6.4	1260.27 N 142.36 E
5914.00	12.48	359.76	1.61	5739.57	1275.0	6.4	1267.06 N 142.38 E
5945.00	13.01	0.55	1.80	5769.81	1281.8	6.4	1273.90 N 142.40 E
5976.00	13.41	359.93	1.37	5799.99	1288.9	6.3	1280.98 N 142.43 E
6008.00	13.67	1.16	1.21	5831.10	1296.3	6.3	1288.47 N 142.50 E
6039.00	13.85	2.66	1.29	5861.21	1303.7	6.3	1295.84 N 142.75 E
6070.00	14.20	5.47	2.47	5891.28	1311.2	6.3	1303.33 N 143.28 E
6101.00	14.77	8.90	3.32	5921.30	1318.9	6.3	1311.02 N 144.25 E
6133.00	14.59	12.85	3.18	5952.26	1327.0	6.3	1318.98 N 145.78 E
6165.00	14.73	14.35	1.26	5983.21	1335.0	6.4	1326.85 N 147.69 E
6196.00	15.12	15.75	1.71	6013.17	1342.9	6.4	1334.56 N 149.76 E
6227.00	15.21	13.91	1.58	6043.09	1351.0	6.5	1342.40 N 151.84 E
6259.00	15.87	13.03	2.19	6073.92	1359.5	6.5	1350.74 N 153.83 E
6290.00	16.84	13.20	3.13	6103.66	1368.1	6.5	1359.24 N 155.81 E
6322.00	17.32	12.41	1.67	6134.25	1377.5	6.6	1368.40 N 157.89 E
6353.00	17.36	10.74	1.61	6163.84	1386.7	6.6	1377.45 N 159.75 E
6384.00	17.19	10.13	0.80	6193.45	1395.9	6.6	1386.51 N 161.42 E
6416.00	17.01	9.07	1.12	6224.03	1405.3	6.7	1395.78 N 162.98 E

A Gyrodata Directional Survey

High Sierra Water Services, LLC
 Lease: SWD Well: #C7B, 8 3/4" Hole
 Location: KDC #2, Weld County, Colorado
 Job Number: RD1013DRM161

MEASURED DEPTH	IN C/L	AZIMUTH	DOGLEG SEVERITY	VERTICAL DEPTH	CLOSURE DIST. AZIMUTH	HORIZONTAL COORDINATES
feet	deg.	deg.	deg./ 100 ft.	feet	feet deg.	feet
6444.00	17.19	8.19	1.13	6250.79	1413.5 6.7	1403.92 N 164.22 E
6476.00	16.97	8.81	0.89	6281.38	1422.9 6.7	1413.22 N 165.61 E
6507.00	17.54	7.84	2.06	6310.99	1432.1 6.7	1422.32 N 166.94 E
6538.00	17.36	8.72	1.03	6340.56	1441.4 6.7	1431.51 N 168.28 E
6568.00	17.58	7.75	1.22	6369.18	1450.4 6.7	1440.43 N 169.57 E
6600.00	18.15	6.44	2.18	6399.63	1460.2 6.7	1450.17 N 170.78 E
6631.00	18.77	4.68	2.69	6429.04	1470.0 6.7	1459.94 N 171.73 E
6662.00	20.00	3.10	4.31	6458.28	1480.3 6.7	1470.20 N 172.42 E
6693.00	20.48	2.31	1.78	6487.37	1491.0 6.7	1480.92 N 172.92 E
6725.00	20.26	2.22	0.69	6517.37	1502.1 6.6	1492.04 N 173.36 E
6755.00	19.25	1.95	3.38	6545.60	1512.2 6.6	1502.18 N 173.73 E
6786.00	18.46	1.16	2.68	6574.94	1522.2 6.6	1512.19 N 174.01 E
6817.00	18.73	0.90	0.91	6604.32	1532.0 6.5	1522.08 N 174.19 E
6849.00	18.51	1.69	1.05	6634.64	1542.2 6.5	1532.29 N 174.42 E
6880.00	18.59	2.48	0.85	6664.03	1552.0 6.5	1542.15 N 174.77 E
6911.00	18.15	2.48	1.42	6693.45	1561.8 6.4	1551.91 N 175.20 E
6942.00	18.11	2.74	0.29	6722.91	1571.4 6.4	1561.54 N 175.64 E
6967.00	18.86	3.71	3.24	6746.62	1579.3 6.4	1569.46 N 176.08 E
6998.00	19.47	4.50	2.14	6775.91	1589.5 6.4	1579.61 N 176.81 E
7030.00	19.91	5.29	1.61	6806.03	1600.2 6.4	1590.35 N 177.73 E
7061.00	19.60	4.94	1.07	6835.21	1610.7 6.4	1600.78 N 178.67 E
7092.00	19.16	5.03	1.42	6864.45	1621.0 6.4	1611.03 N 179.56 E

A Gyrodata Directional Survey

High Sierra Water Services, LLC
 Lease: SWD Well: #C7B, 8 3/4" Hole
 Location: KDC #2, Weld County, Colorado
 Job Number: RD1013DRM161

MEASURED DEPTH	deg.	deg.	INCL	DOGLEG SEVERITY	VERTICAL DEPTH	CLOSURE DIST.	AZIMUTH deg.	HORIZONTAL COORDINATES feet
feet				deg./ 100 ft.	feet	feet		feet
7122.00	18.55	5.12		2.04	6892.84	1630.7	6.4	1620.69 N
7153.00	18.20	5.03		1.13	6922.26	1640.5	6.3	1630.42 N
7184.00	17.54	5.73		2.24	6951.77	1650.0	6.3	1639.89 N
7215.00	17.19	6.17		1.21	6981.35	1659.2	6.3	1649.10 N
7247.00	17.58	5.56		1.35	7011.89	1668.8	6.3	1658.61 N
7278.00	17.54	5.21		0.36	7041.45	1678.1	6.3	1667.92 N
7309.00	18.20	4.24		2.34	7070.95	1687.7	6.3	1677.40 N
7340.00	18.73	3.45		1.89	7100.36	1697.5	6.3	1687.20 N
7370.00	18.73	3.10		0.37	7128.77	1707.1	6.3	1696.81 N
7401.00	18.33	3.36		1.32	7158.16	1716.9	6.3	1706.65 N
7433.00	17.85	3.18		1.51	7188.58	1726.8	6.3	1716.57 N
7464.00	17.54	3.18		1.00	7218.11	1736.3	6.2	1725.98 N
7495.00	17.58	3.98		0.79	7247.67	1745.6	6.2	1735.31 N
7526.00	18.37	3.27		2.64	7277.15	1755.2	6.2	1744.86 N
7557.00	18.95	3.01		1.89	7306.52	1765.1	6.2	1754.76 N
7589.00	18.90	2.57		0.47	7336.79	1775.4	6.2	1765.13 N
7620.00	18.81	2.57		0.29	7366.13	1785.4	6.2	1775.14 N
7651.00	18.59	2.92		0.80	7395.49	1795.3	6.1	1785.06 N
7683.00	18.11	2.92		1.50	7425.87	1805.4	6.1	1795.13 N
7713.00	17.98	3.01		0.44	7454.39	1814.7	6.1	1804.41 N
7744.00	18.02	3.10		0.16	7483.87	1824.2	6.1	1813.97 N
								188.10 E
								188.62 E
								189.21 E
								189.81 E
								190.35 E
								190.86 E
								191.31 E
								191.78 E
								192.30 E
								192.78 E
								193.29 E

A Gyrodata Directional Survey

High Sierra Water Services, LLC
 Lease: SWD Well: #C7B, 8 3/4" Hole
 Location: KDC #2, Weld County, Colorado
 Job Number: RD1013DRM161

MEASURED DEPTH feet	INCL deg.	AZIMUTH deg.	DOGLEG SEVERITY deg./ 100 ft.	VERTICAL DEPTH feet	CLOSURE DIST. AZIMUTH feet deg.	HORIZONTAL COORDINATES feet
7775.00	17.98	3.80	0.71	7513.36	1833.8 6.1	1823.53 N 193.86 E
7806.00	18.07	3.36	0.53	7542.84	1843.4 6.1	1833.11 N 194.46 E
7837.00	17.89	3.01	0.68	7572.32	1853.0 6.0	1842.66 N 195.00 E
7868.00	18.02	3.36	0.54	7601.81	1862.5 6.0	1852.20 N 195.53 E
7899.00	17.85	3.54	0.58	7631.31	1872.0 6.0	1861.73 N 196.10 E
7931.00	17.67	3.45	0.57	7661.78	1881.8 6.0	1871.48 N 196.70 E
7962.00	17.32	3.18	1.16	7691.35	1891.1 6.0	1880.78 N 197.23 E
7994.00	17.14	3.54	0.65	7721.91	1900.6 6.0	1890.24 N 197.79 E
8024.00	16.92	3.89	0.81	7750.59	1909.3 6.0	1899.01 N 198.36 E
8056.00	16.79	4.41	0.62	7781.22	1918.6 6.0	1908.26 N 199.03 E
8087.00	16.79	4.24	0.16	7810.90	1927.6 5.9	1917.19 N 199.71 E
8118.00	15.74	5.29	3.52	7840.66	1936.2 5.9	1925.84 N 200.42 E
8149.00	14.46	5.82	4.15	7870.59	1944.3 5.9	1933.88 N 201.20 E
8180.00	14.07	5.38	1.31	7900.63	1952.0 5.9	1941.48 N 201.95 E
8212.00	12.92	6.79	3.74	7931.75	1959.4 5.9	1948.91 N 202.74 E
8243.00	12.53	6.96	1.26	7961.99	1966.3 5.9	1955.69 N 203.56 E
8274.00	11.87	7.32	2.14	7992.28	1972.8 5.9	1962.19 N 204.37 E
8306.00	11.74	7.84	0.52	8023.61	1979.3 6.0	1968.68 N 205.23 E
8337.00	11.43	7.14	1.10	8053.98	1985.6 6.0	1974.85 N 206.04 E
8368.00	11.25	7.49	0.62	8084.37	1991.7 6.0	1980.90 N 206.82 E
8399.00	11.21	7.32	0.17	8114.78	1997.7 6.0	1986.88 N 207.60 E
8431.00	10.73	9.42	1.95	8146.19	2003.8 6.0	1992.91 N 208.48 E

A Gyrodata Directional Survey

High Sierra Water Services, LLC
 Lease: SWD Well: #C7B, 8 3/4" Hole
 Location: KDC #2, Weld County, Colorado
 Job Number: RD1013DRM161

MEASURED DEPTH feet	I N C L deg.	A Z I M U T H deg.	D O G L E G S E V E R I T Y deg./ 100 ft.	V E R T I C A L D E P T H feet	C L O S U R E D I S T. A Z I M U T H feet deg.	H O R I Z O N T A L C O O R D I N A T E S feet
8462.00	10.59	9.51	0.45	8176.66	2009.5 6.0	1998.56 N 209.43 E
8492.00	10.55	10.04	0.35	8206.15	2015.0 6.0	2003.99 N 210.36 E
8524.00	9.67	10.13	2.75	8237.65	2020.6 6.0	2009.52 N 211.34 E
8555.00	8.84	8.46	2.81	8268.25	2025.6 6.0	2014.44 N 212.15 E
8586.00	7.65	5.91	4.01	8298.93	2030.0 6.0	2018.85 N 212.71 E
8618.00	7.03	4.68	2.00	8330.66	2034.1 6.0	2022.92 N 213.09 E
8649.00	6.51	3.80	1.71	8361.45	2037.8 6.0	2026.56 N 213.36 E
8681.00	5.98	1.78	1.79	8393.26	2041.2 6.0	2030.04 N 213.54 E
8712.00	5.67	1.08	1.03	8424.10	2044.4 6.0	2033.18 N 213.62 E
8743.00	5.19	1.34	1.55	8454.96	2047.3 6.0	2036.11 N 213.68 E
8763.00	5.14	2.04	0.40	8474.88	2049.1 6.0	2037.91 N 213.73 E
8834.00	5.63	6.08	0.87	8545.56	2055.7 6.0	2044.55 N 214.21 E
8865.00	5.54	5.65	0.32	8576.42	2058.8 6.0	2047.56 N 214.52 E
8897.00	4.09	13.64	4.98	8608.30	2061.4 6.0	2050.20 N 214.94 E
8929.00	3.87	14.17	0.70	8640.23	2063.6 6.0	2052.36 N 215.48 E
8959.00	3.16	5.12	3.00	8670.17	2065.5 6.0	2054.16 N 215.80 E
8991.00	2.51	9.42	2.14	8702.13	2067.0 6.0	2055.73 N 215.99 E
9022.00	1.05	31.92	5.13	8733.12	2068.0 6.0	2056.64 N 216.25 E
9054.00	0.79	61.54	1.67	8765.11	2068.4 6.0	2057.00 N 216.60 E
9085.00	0.70	115.60	2.20	8796.11	2068.4 6.0	2057.02 N 216.96 E
9116.00	0.66	128.08	0.49	8827.11	2068.3 6.0	2056.83 N 217.27 E
9148.00	0.31	121.49	1.11	8859.11	2068.1 6.0	2056.67 N 217.49 E

A Gyrodata Directional Survey

High Sierra Water Services, LLC
 Lease: SWD Well: #C7B, 8 3/4" Hole
 Location: KDC #2, Weld County, Colorado
 Job Number: RD1013DRM161

MEASURED DEPTH feet	I N C L deg.	A Z I M U T H deg.	D O G L E G S E V E R I T Y deg./ 100 ft.	V E R T I C A L D E P T H feet	C L O S U R E D I S T. A Z I M U T H feet deg.	H O R I Z O N T A L C O O R D I N A T E S feet
9179.00	0.62	109.62	1.04	8890.11	2068.1 6.0	2056.57 N 217.72 E
9211.00	0.53	97.49	0.47	8922.10	2068.0 6.1	2056.49 N 218.03 E
9242.00	0.48	91.16	0.24	8953.10	2068.0 6.1	2056.47 N 218.30 E
9273.00	0.35	103.03	0.50	8984.10	2068.0 6.1	2056.44 N 218.52 E
9304.00	0.35	86.77	0.32	9015.10	2068.0 6.1	2056.43 N 218.71 E
9336.00	0.40	34.12	1.05	9047.10	2068.1 6.1	2056.53 N 218.87 E
9367.00	0.35	66.64	0.69	9078.10	2068.3 6.1	2056.65 N 219.02 E
9399.00	0.31	62.33	0.15	9110.10	2068.4 6.1	2056.73 N 219.18 E
9430.00	0.35	6.44	1.00	9141.10	2068.5 6.1	2056.87 N 219.27 E
9461.00	0.18	40.10	0.72	9172.10	2068.7 6.1	2057.00 N 219.31 E
9493.00	0.22	7.05	0.38	9204.10	2068.8 6.1	2057.10 N 219.35 E
9524.00	0.26	8.72	0.13	9235.10	2068.9 6.1	2057.22 N 219.37 E
9555.00	0.31	40.71	0.53	9266.10	2069.0 6.1	2057.36 N 219.43 E
9586.00	0.48	25.33	0.64	9297.10	2069.2 6.1	2057.54 N 219.54 E
9617.00	0.57	0.99	0.77	9328.10	2069.5 6.1	2057.81 N 219.60 E
9647.00	0.35	26.56	0.99	9358.09	2069.7 6.1	2058.04 N 219.65 E
9679.00	0.40	334.36	1.04	9390.09	2069.9 6.1	2058.23 N 219.64 E
9710.00	0.31	12.68	0.80	9421.09	2070.1 6.1	2058.41 N 219.61 E
9741.00	0.18	321.26	0.78	9452.09	2070.2 6.1	2058.53 N 219.60 E
9772.00	0.53	319.06	1.13	9483.09	2070.3 6.1	2058.68 N 219.48 E
9803.00	0.40	340.07	0.68	9514.09	2070.5 6.1	2058.89 N 219.35 E

A Gyrodata Directional Survey

High Sierra Water Services, LLC
 Lease: SWD Well: #C7B, 8 3/4" Hole
 Location: KDC #2, Weld County, Colorado
 Job Number: RD1013DRM161

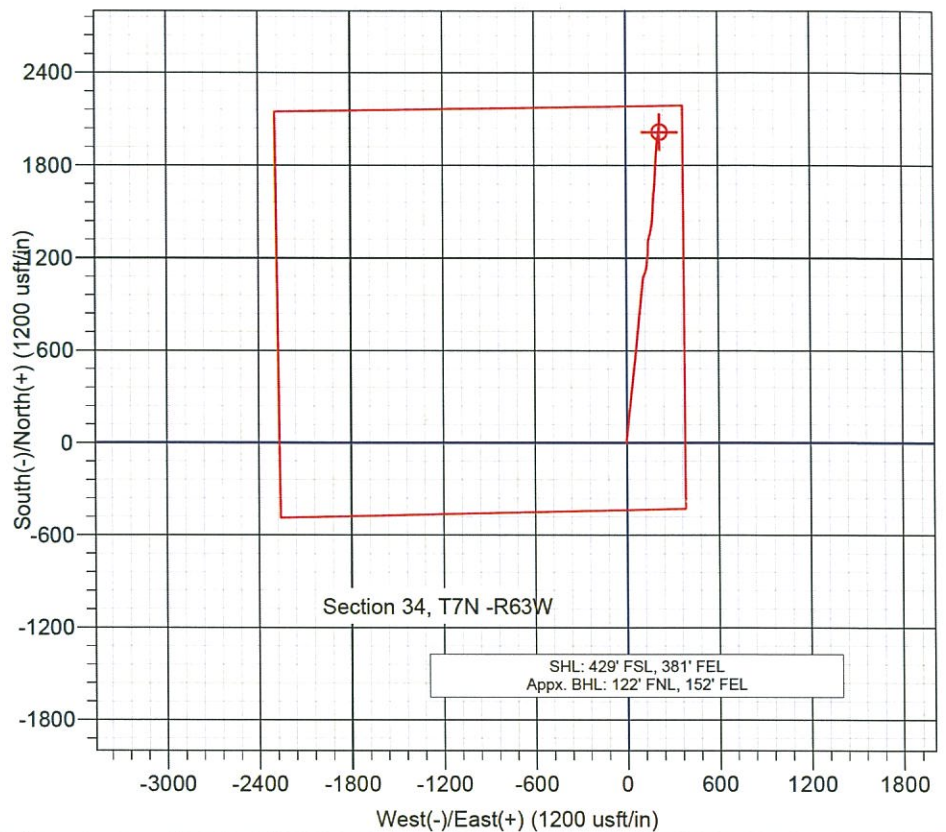
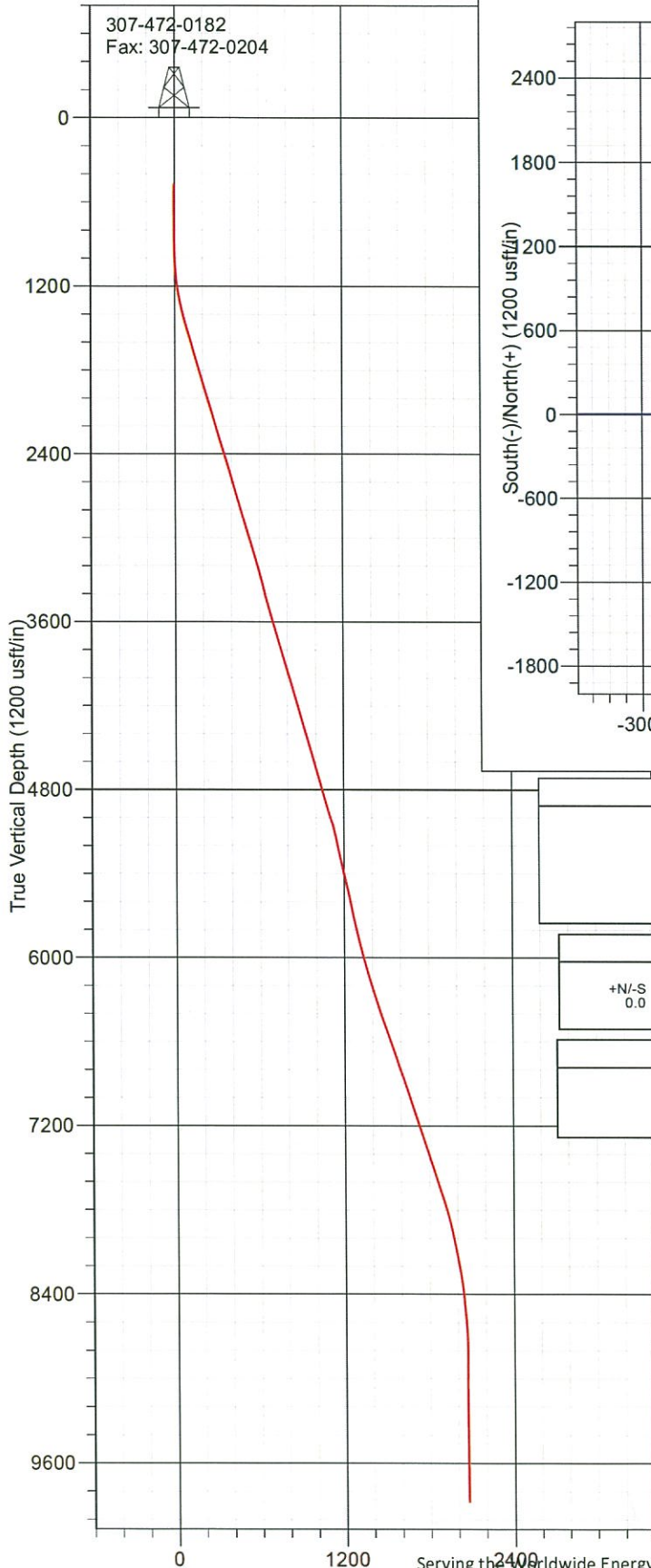
MEASURED DEPTH feet	I N C L deg.	A Z I M U T H deg.	D O G L E G S E V E R I T Y deg./ 100 ft.	V E R T I C A L D E P T H feet	C L O S U R E D I S T. feet	A Z I M U T H deg.	H O R I Z O N T A L C O O R D I N A T E S feet
9835.00	0.31	312.65	0.59	9546.09	2070.7	6.1	2059.05 N 219.24 E
9866.00	0.57	335.67	1.00	9577.09	2070.9	6.1	2059.25 N 219.12 E
9897.00	0.66	325.22	0.46	9608.09	2071.1	6.1	2059.53 N 218.95 E
9928.00	0.70	349.74	0.94	9639.09	2071.5	6.1	2059.87 N 218.82 E
9959.00	0.40	342.35	0.99	9670.08	2071.7	6.1	2060.16 N 218.75 E
9991.00	0.57	318.36	0.82	9702.08	2071.9	6.1	2060.38 N 218.61 E
10022.00	0.66	354.31	1.26	9733.08	2072.2	6.1	2060.67 N 218.49 E
10053.00	0.48	28.94	1.23	9764.08	2072.5	6.1	2060.97 N 218.54 E
10084.00	0.62	27.62	0.45	9795.08	2072.8	6.1	2061.23 N 218.68 E
10116.00	0.62	12.33	0.52	9827.08	2073.1	6.1	2061.55 N 218.79 E
STRAIGHT LINE PROJECTION TO BIT DEPTH AT 10164 FT. MD.							
10164.00	0.62	12.33	0.00	9875.07	2073.6	6.1	2062.06 N 218.91 E

Final Station Closure: Distance: 2073.64 ft Az: 6.06 deg

Gyrodata Incorporated
301 Thelma Dr. #413
Casper, Wyoming 82601

Company: High Sierra Water Services
Project: Weld Co., CO
Site: Section 34, T7N -R63W
Well: SWD #C7b
Wellbore: Plan #1
Survey: As Drilled (SWD #C7B/As Drilled)

307-472-0182
Fax: 307-472-0204



SECTION DETAILS

No plan data is available

WELL DETAILS: SWD #C7b

+N/-S	+E/-W	Northing	Ground Level: Easting	Latitude	Longitude	Slot
0.0	0.0	1435632.27	3301795.20	40° 31' 26.904 N	104° 24' 51.768 W	

DESIGN TARGET DETAILS

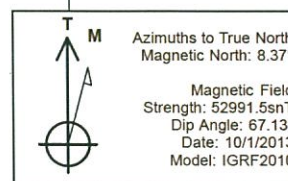
No target data is available.

CASING DETAILS

No casing data is available

FORMATION TOP DETAILS

No formation data is available



Survey: As Drilled (SWD #C7b/Plan #1)

Created By: M. Loucks Date: 10:30, November 18 2013