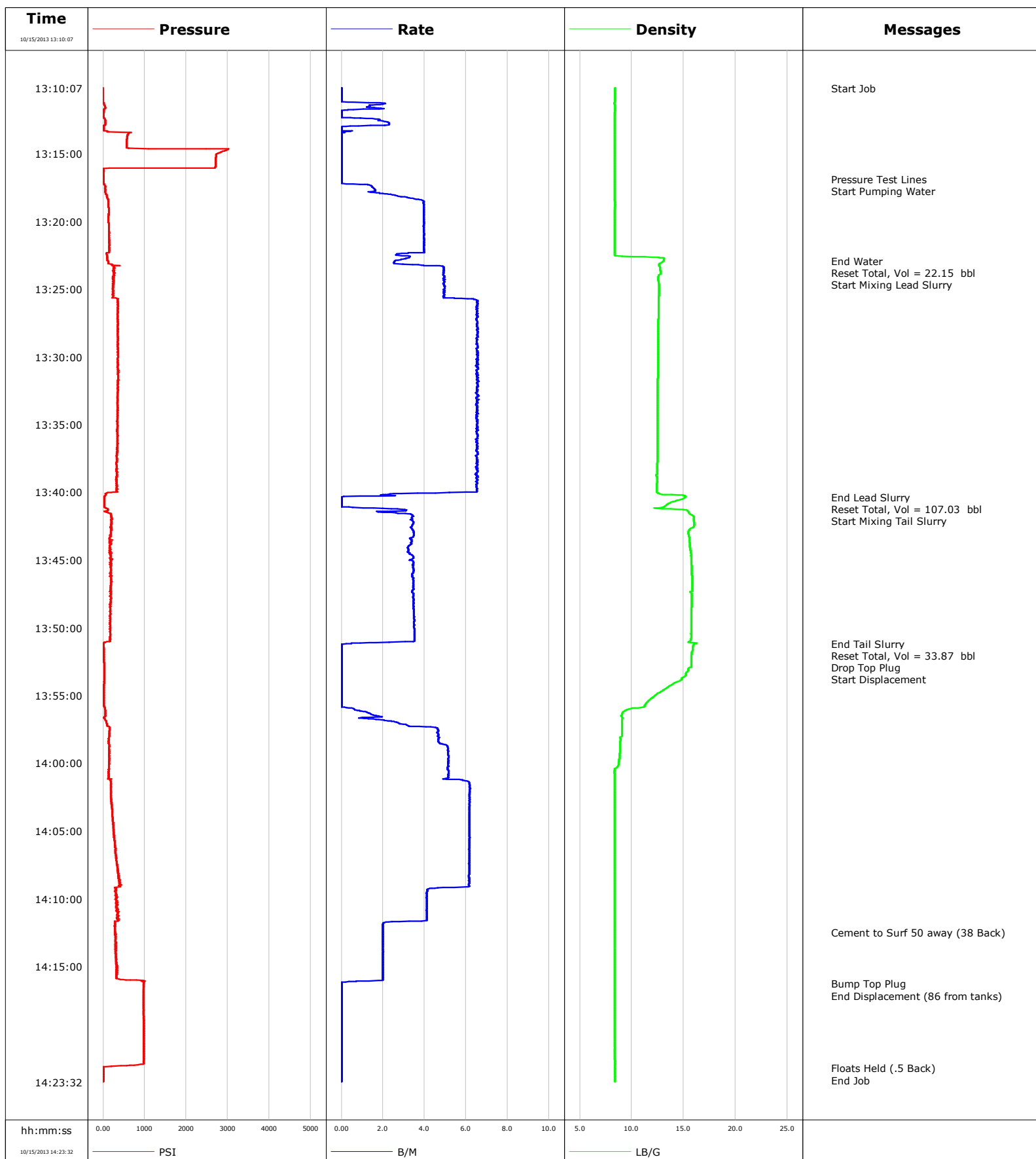


Well Fed 31-4D
Field Parachute
Engineer
Country United States

Client Encana
SIR No. CFA0-00999
Job Type Surface
Job Date 10-15-2013

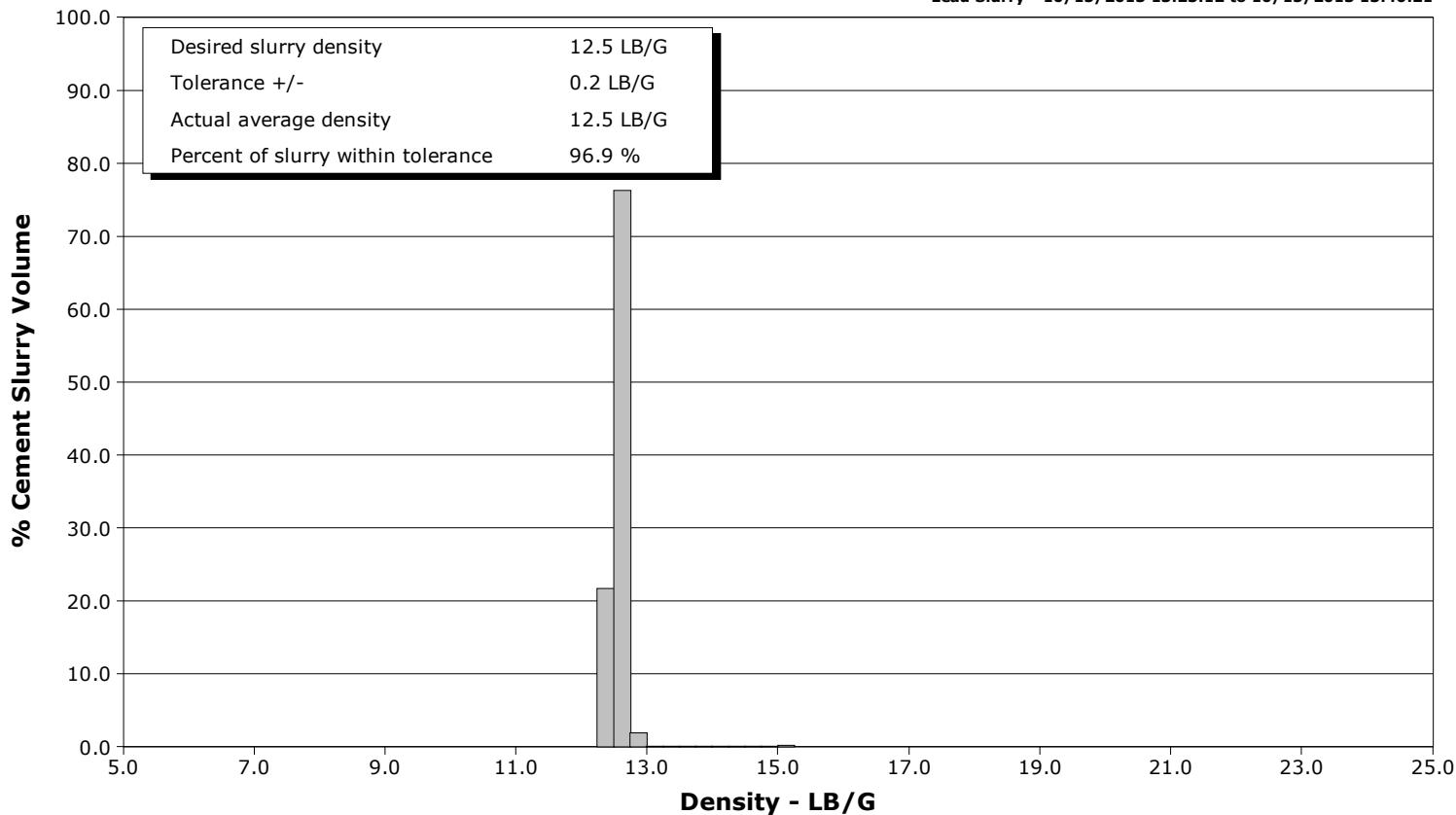


Schlumberger Cementing Qa/Qc Density Report

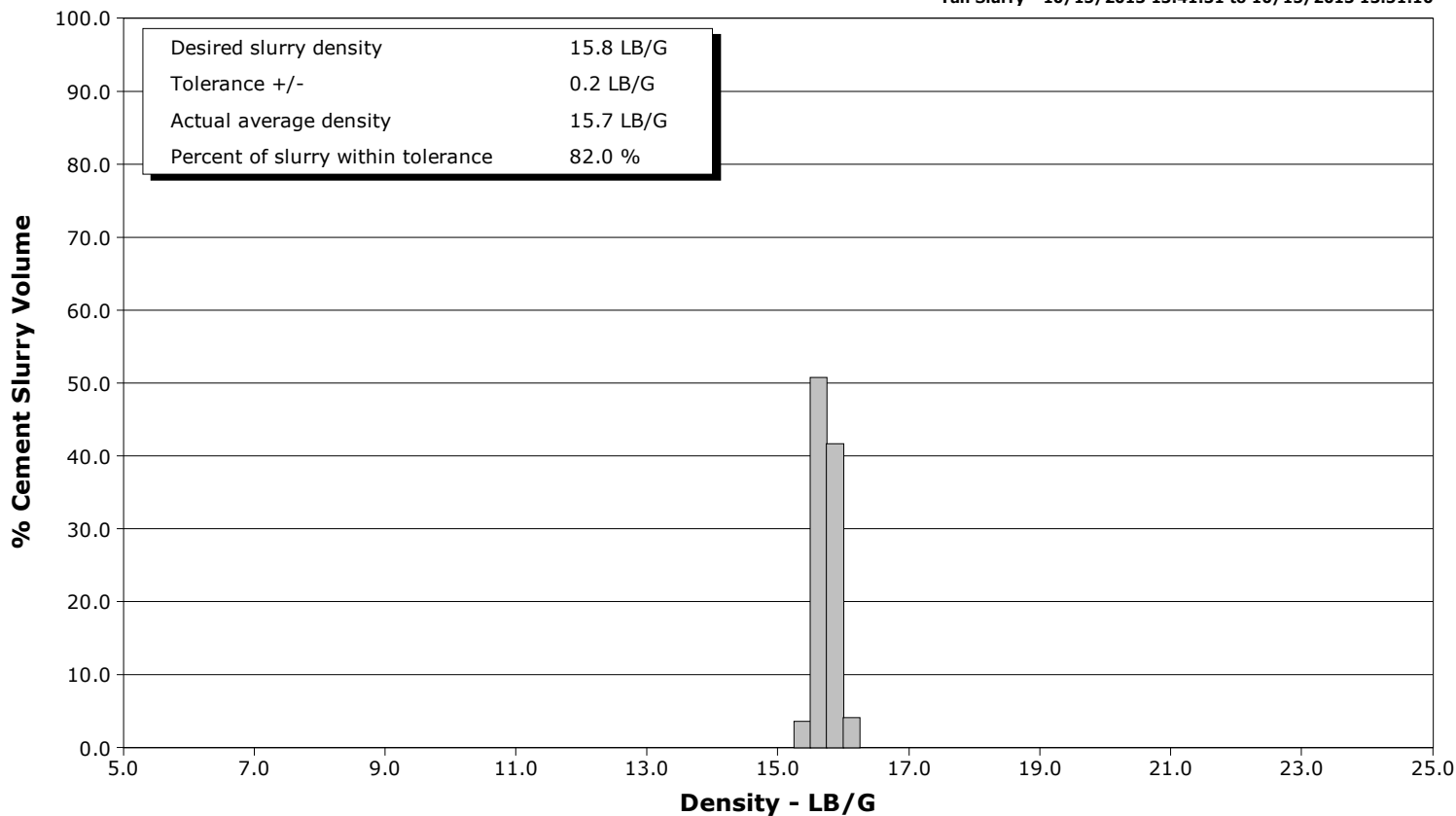
Well Fed 31-4D
Field Parachute
Engineer
Country United States

Client Encana
SIR No. CFA0-00999
Job Type Surface
Job Date 10-15-2013

Lead Slurry - 10/15/2013 13:23:12 to 10/15/2013 13:40:21



Tail Slurry - 10/15/2013 13:41:31 to 10/15/2013 13:51:10



Cementing Service Report

					Customer Encana		Job Number CFA0-00999	
Well Fed 31-4D			Location (legal)		Schlumberger Location			Job Start Oct/15/2013
Field Parachute		Formation Name/Type		Deviation	Bit Size		Well MD	Well TVD
County Garfield		State/Province Colorado		BHP	BHST	BHCT	Pore Press. Gradient	
Well Master		API/UWI						
Rig Name		Drilled For Gas		Service Via Land		Casing/Liner		
				Depth, ft	Size, in	Weight, lb/ft	Grade	Thread
Offshore Zone		Well Class New		Well Type Exploration		1185.0	9.630	36.0
				0.0	0.000	0.0	K55	8RD
Drilling Fluid Type		Max. Density		Plastic Viscosity		Tubing/Drill Pipe		
						Depth,	Size,	Weight,
Service Line Cementing		Job Type Surface						
Max. Allowed Tub. Press		Max. Allowed Ann. Press		WH Connection		Perforations/Open Hole		
						Top,	Bottom,	No. of Shots
								Total Interval
								Diameter
						Treat Down Casing	Displacement 88.0 bbl	Packer Type
						Tubing Vol.	Casing Vol.	Packer Depth
								Annular Vol.
								Openhole Vol.
Casing/Tubing Secured <input checked="" type="checkbox"/>		1 Hole Vol. Circulated prior to Cement <input checked="" type="checkbox"/>		Casing Tools		Squeeze Job		
Lift Pressure 360 psi		Shoe Type Guide		Squeeze Type				
Pipe Rotated <input type="checkbox"/>		Pipe Reciprocated <input type="checkbox"/>		Shoe Depth 1185.0 ft		Tool Type		
No. Centralizers		Top Plugs 1		Bottom Plugs		Stage Tool Type		Tool Depth
Cement Head Type Single		Stage Tool Depth		Tail Pipe Size				
Job Scheduled For Oct/15/2013		Arrived on Location Oct/15/2013		Leave Location Oct/15/2013		Collar Type Float		Tail Pipe Depth
						Collar Depth 1138.0 ft		Sqz. Total Vol.
Date	Time 24-hr clock	Treating Pressure PSI	Flow Rate B/M	Density LB/G	Volume BBL	Stage BBL	Message	
10/15/2013	13:10:07	-4	0.0	8.38	0.0	0.0		
10/15/2013	13:10:08						Start Job	
10/15/2013	13:10:08	-4	0.0	8.38	0.0	0.0		
10/15/2013	13:12:37	56	2.1	8.38	1.3	1.3		
10/15/2013	13:15:07	2719	0.0	8.37	2.1	2.1		
10/15/2013	13:16:53						Pressure Test Lines	
10/15/2013	13:16:53	11	0.0	8.37	2.1	2.1		
10/15/2013	13:16:55						Start Pumping Water	
10/15/2013	13:16:55	10	0.0	8.38	2.1	2.1		
10/15/2013	13:17:37	49	1.6	8.37	2.6	2.6		
10/15/2013	13:20:07	132	4.0	8.38	11.3	11.3		
10/15/2013	13:22:37	106	3.3	11.25	21.0	21.0		
10/15/2013	13:22:53						End Water	
10/15/2013	13:22:53	107	2.6	13.08	21.8	21.8		
10/15/2013	13:23:02						Reset Total, Vol = 22.15 bbl	
10/15/2013	13:23:02	128	2.5	12.88	22.1	22.1		
10/15/2013	13:23:12						Start Mixing Lead Slurry	
10/15/2013	13:23:12	223	3.7	12.64	22.6	0.5		
10/15/2013	13:25:07	257	5.0	12.64	32.0	9.9		
10/15/2013	13:27:37	357	6.5	12.56	47.4	25.3		
10/15/2013	13:30:07	354	6.6	12.54	63.8	41.6		

Well			Field		Job Start	Customer	Job Number
Fed 31-4D			Parachute		Oct/15/2013	Encana	CFA0-00999
Date	Time 24-hr clock	Treating Pressure PSI	Flow Rate B/M	Density LB/G	Volume BBL	Stage BBL	Message
10/15/2013	13:35:07	348	6.5	12.49	96.5	74.3	
10/15/2013	13:37:37	328	6.5	12.49	112.8	90.7	
10/15/2013	13:40:07	67	2.4	12.75	128.8	106.7	
10/15/2013	13:40:21						End Lead Slurry
10/15/2013	13:40:21	32	0.0	15.18	129.2	107.0	
10/15/2013	13:40:24						Reset Total, Vol = 107.03 bbl
10/15/2013	13:40:24	33	0.0	15.10	129.2	107.0	
10/15/2013	13:41:31						Start Mixing Tail Slurry
10/15/2013	13:41:31	125	2.6	15.52	130.1	0.9	
10/15/2013	13:42:37	179	3.4	15.87	133.8	4.7	
10/15/2013	13:45:07	193	3.5	15.75	142.2	13.1	
10/15/2013	13:47:37	169	3.5	15.80	150.9	21.7	
10/15/2013	13:50:07	184	3.5	15.73	159.6	30.4	
10/15/2013	13:51:10						End Tail Slurry
10/15/2013	13:51:10	11	0.5	16.24	163.0	33.9	
10/15/2013	13:51:13						Reset Total, Vol = 33.87 bbl
10/15/2013	13:51:13	11	0.0	15.97	163.0	33.9	
10/15/2013	13:51:14						Drop Top Plug
10/15/2013	13:51:14	11	0.0	15.96	163.0	0.0	
10/15/2013	13:51:15						Start Displacement
10/15/2013	13:51:15	11	0.0	15.95	163.0	0.0	
10/15/2013	13:52:37	29	0.0	15.72	163.0	0.0	
10/15/2013	13:55:07	22	0.0	12.08	163.0	0.0	
10/15/2013	13:57:37	157	4.7	9.07	167.0	3.9	
10/15/2013	14:00:07	144	5.1	8.72	179.3	16.3	
10/15/2013	14:02:37	198	6.2	8.38	193.6	30.5	
10/15/2013	14:05:07	252	6.2	8.38	209.0	45.9	
10/15/2013	14:07:37	338	6.1	8.38	224.4	61.3	
10/15/2013	14:10:07	312	4.1	8.38	237.9	74.8	
10/15/2013	14:12:31						Cement to Surf 50 away (38 Back)
10/15/2013	14:12:31	283	2.0	8.38	246.0	82.9	
10/15/2013	14:12:37	284	2.0	8.38	246.2	83.1	
10/15/2013	14:15:07	317	2.0	8.38	251.2	88.1	
10/15/2013	14:16:17						Bump Top Plug
10/15/2013	14:16:17	981	0.0	8.38	253.1	90.1	
10/15/2013	14:16:18						End Displacement (86 from tanks)
10/15/2013	14:16:18	976	0.0	8.38	253.1	90.1	
10/15/2013	14:17:37	976	0.0	8.38	253.1	90.1	
10/15/2013	14:20:07	978	0.0	8.38	253.1	90.1	
10/15/2013	14:22:29						Floats Held (.5 Back)
10/15/2013	14:22:29	4	0.0	8.38	253.1	90.1	
10/15/2013	14:22:37	5	0.0	8.38	253.1	90.1	
10/15/2013	14:23:27						End Job

Well	Fed 31-4D	Field	Parachute	Job Start	Oct/15/2013	Customer	Encana	Job Number	CFA0-00999
------	-----------	-------	-----------	-----------	-------------	----------	--------	------------	------------

Post Job Summary

Average Pump Rates, bbl/min					Volume of Fluid Injected, bbl			
Slurry	N2		Mud	Maximum Rate	Total Slurry	Mud	Spacer	N2
4.6			0.0	6.6	140.0	0.0	22.6	
Treating Pressure Summary, psi					Breakdown Fluid			
Maximum	Final	Average	Bump Plug to	Breakdown	Type	Volume		Density
3032	6	334	975					
Avg. N2 Percent	Designed Slurry Volume		Displacement	Mix Water Temp	Cement Circulated to Surface?	Volume		
	138.0 bbl		86.0 bbl	70 degF	<input checked="" type="checkbox"/>	38.0 bbl		
					Washed Thru Perfs	To		
					<input type="checkbox"/>			
Customer or Authorized Representative			Schlumberger Supervisor			Circulation Lost	Job Completed	
Sparky Anderson						<input type="checkbox"/>	<input checked="" type="checkbox"/>	
						-	-	