



Encana Oil & Gas

135436

5":100' - MD

10/7/2013 1:45:07 PM

Oper. Company: H&P

Country: USA

State / Province: Colorado

County / Parish: Weld

Started:

API/UWI:

Field: DJ Basin

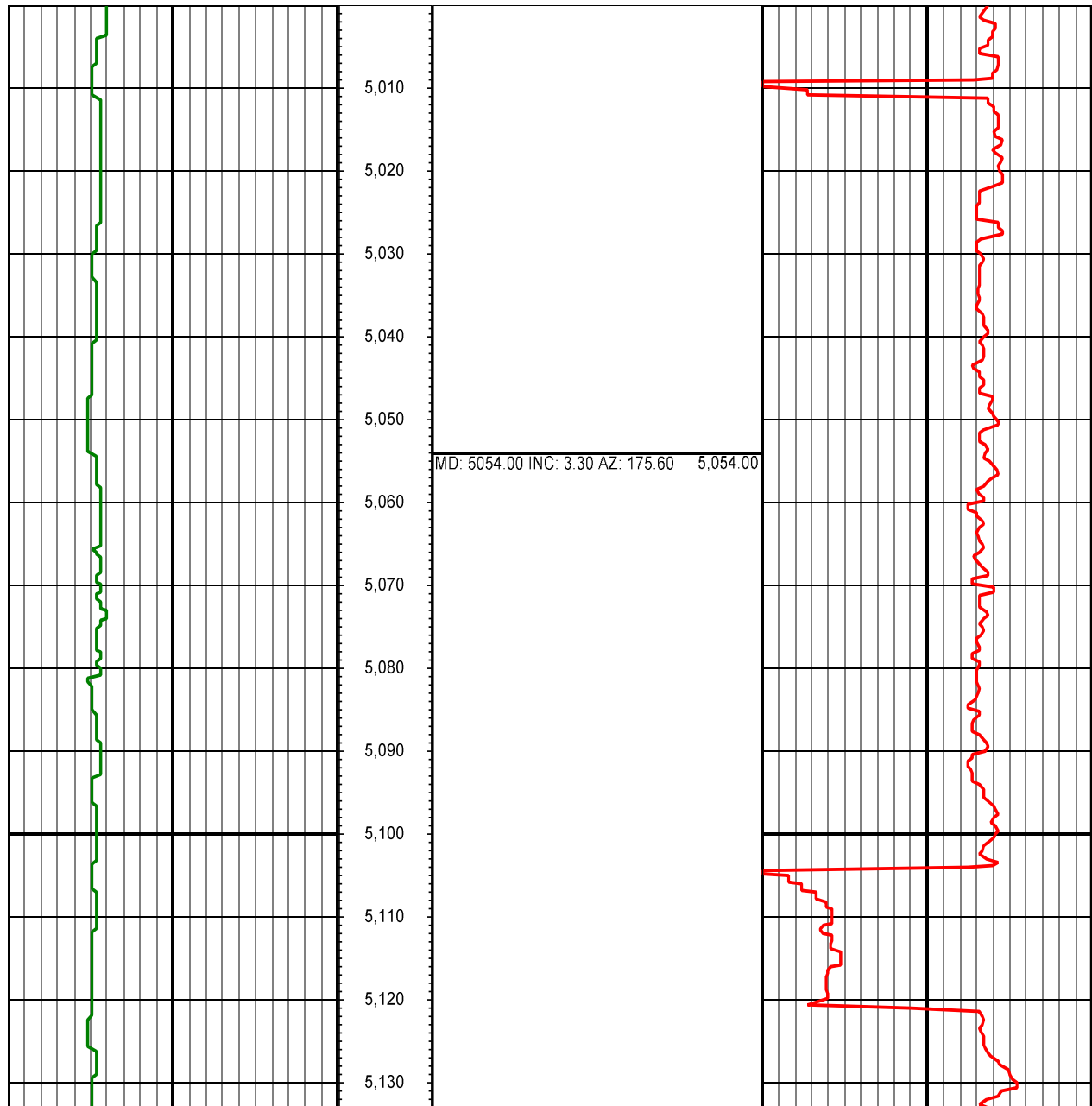
Well: Qualls 3G-28H

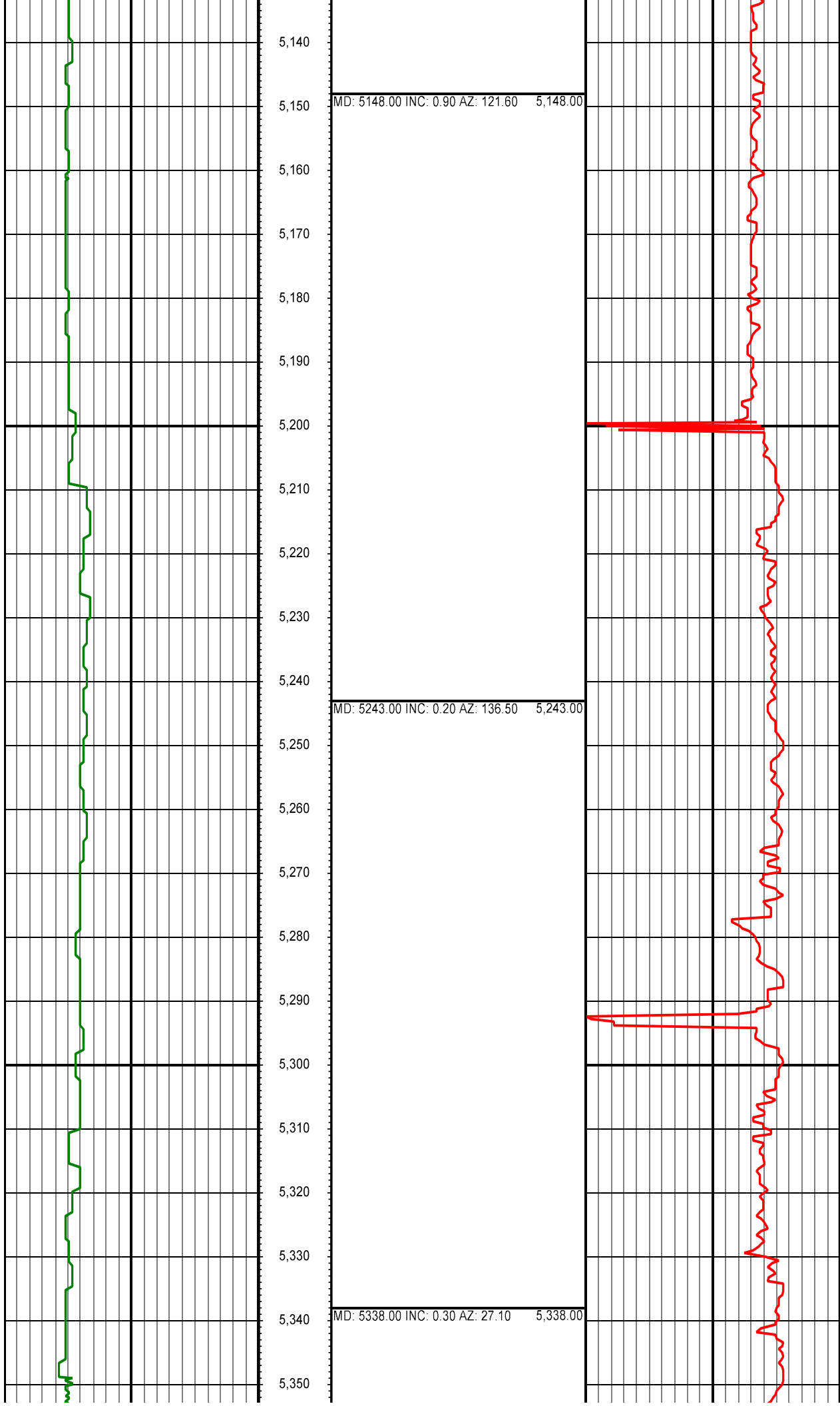
Rig: 278

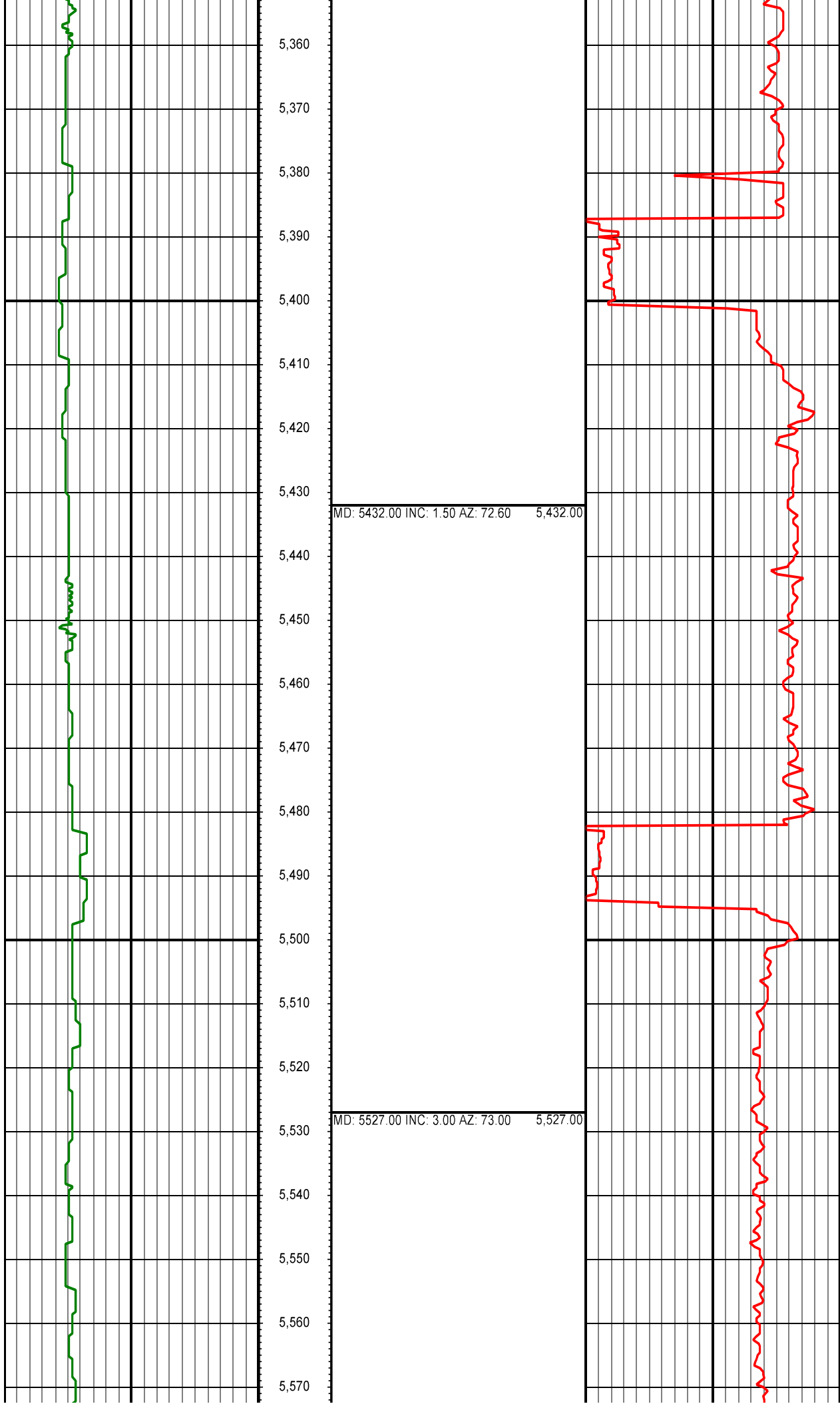
Ended:

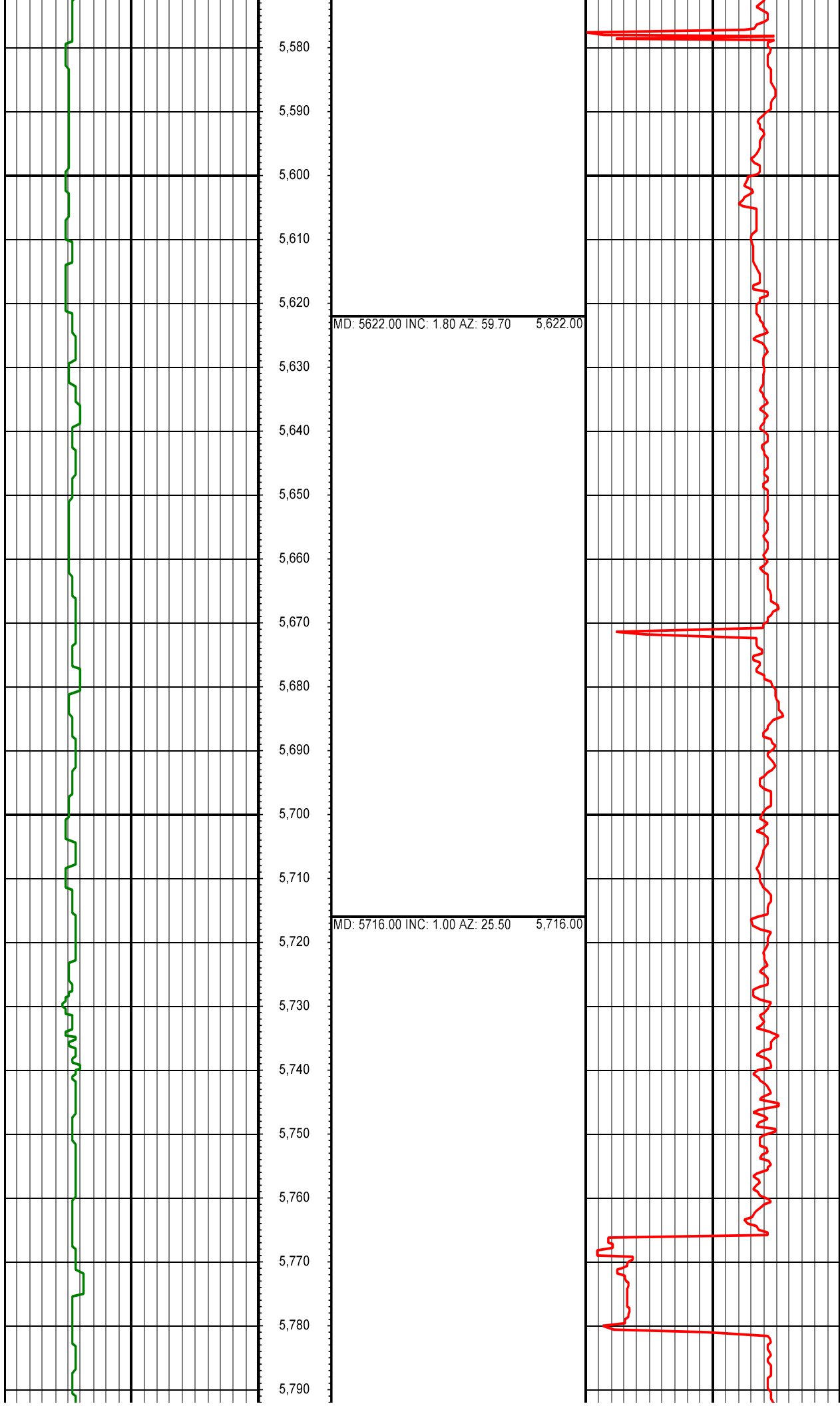
*All interpretations are opinions based on inferences from electrical or other measurements and we cannot and do not guarantee the accuracy or correctness of any interpretation, and we shall not except in the case of gross or willful negligence on our part, be liable or responsible for any loss, cost damages or expenses incurred or sustained by anyone resulting from an interpretation made by any of our officers, agents, or employees.*

14.90 GR(API) 220.45 MD Surveys (MD/INC/AZ) 0.00 ROP(FT/HR) 515.13  
FT

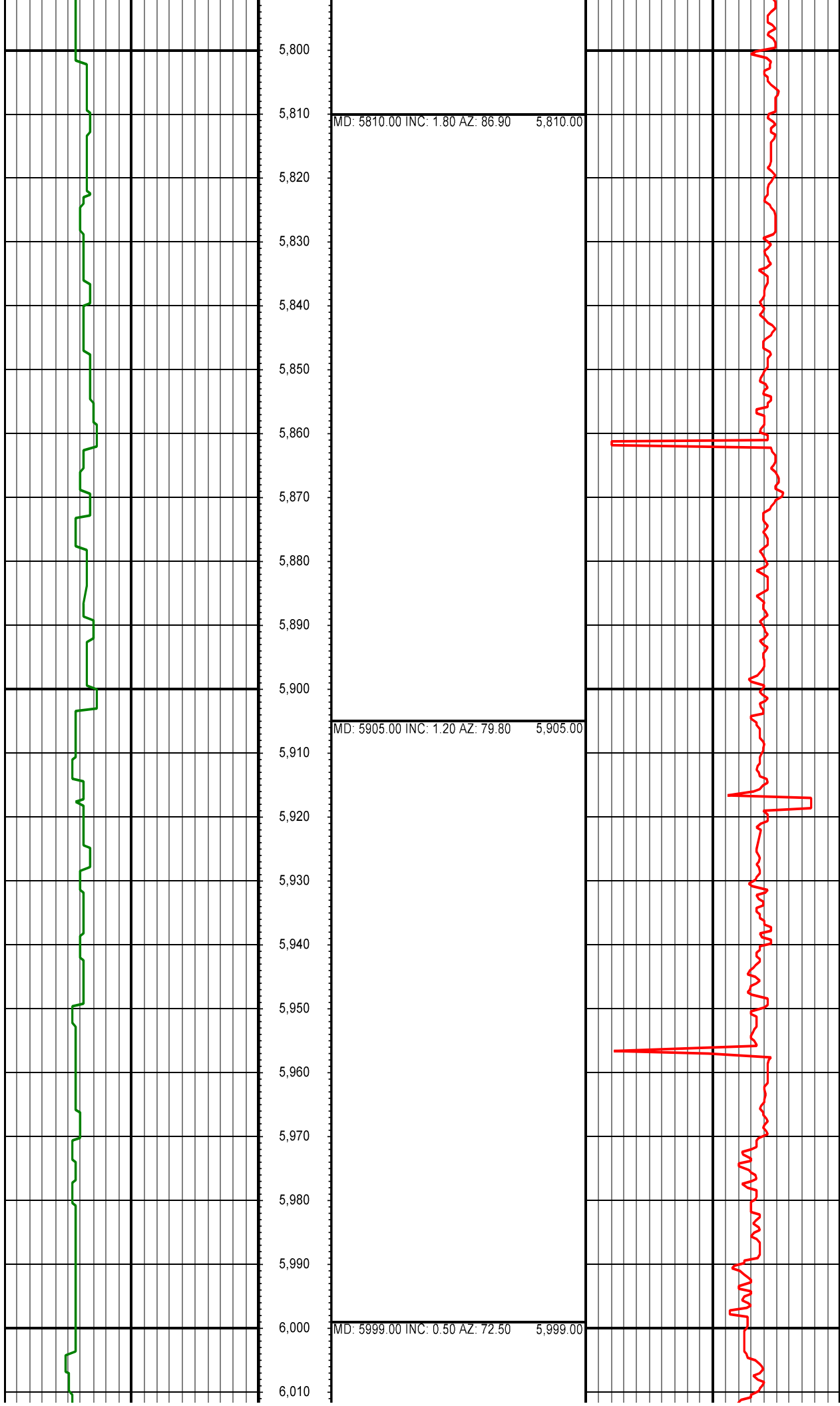


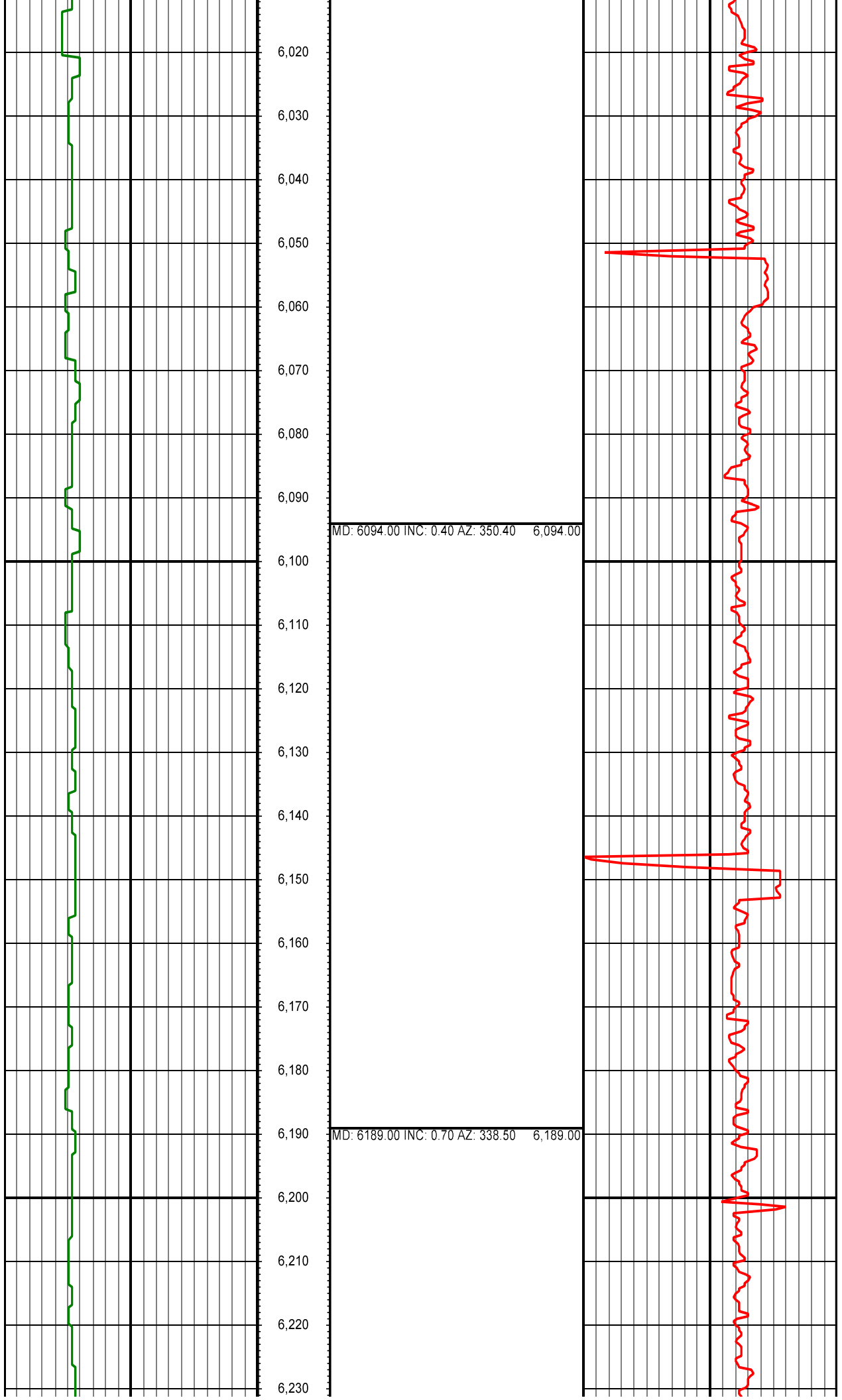


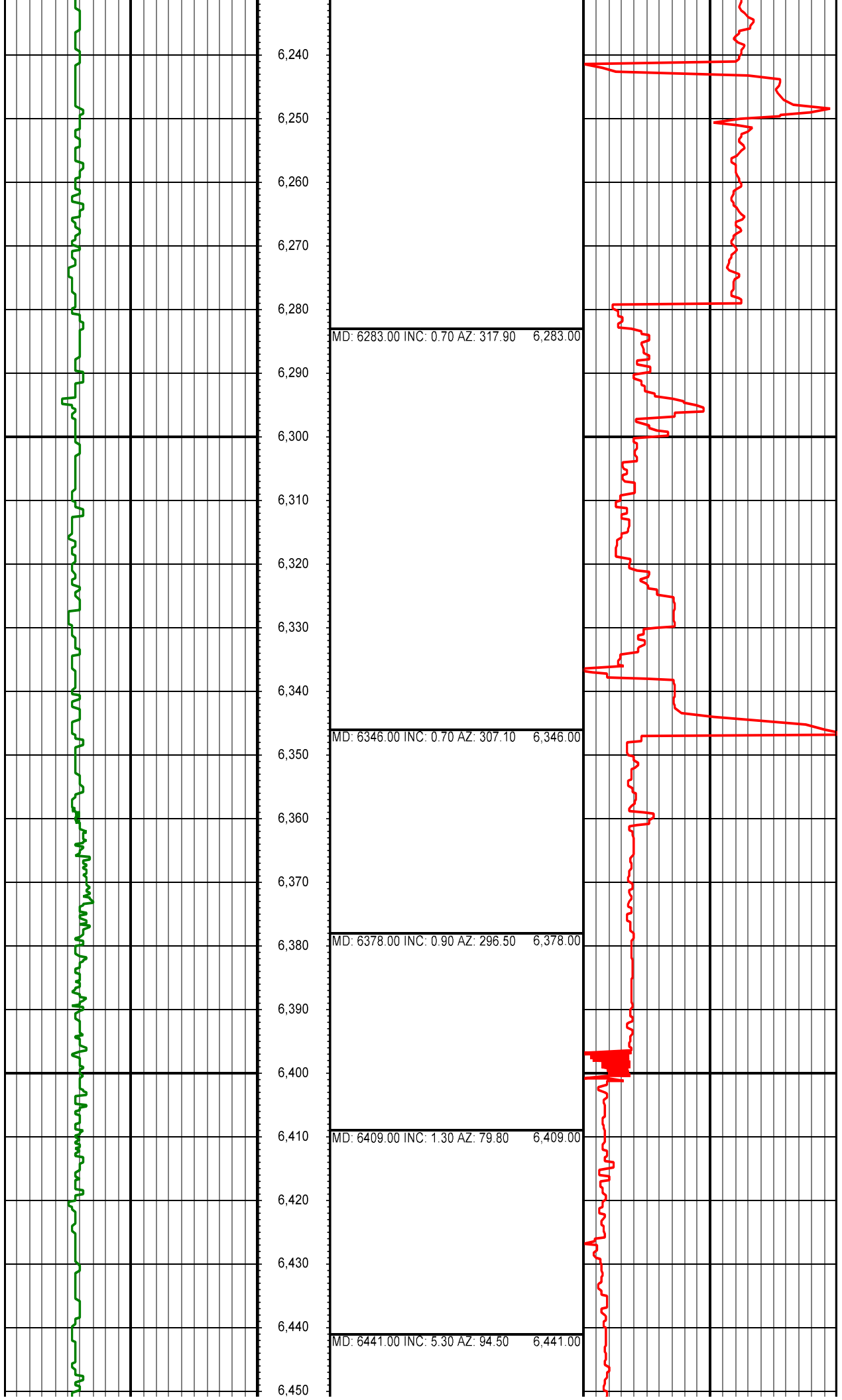


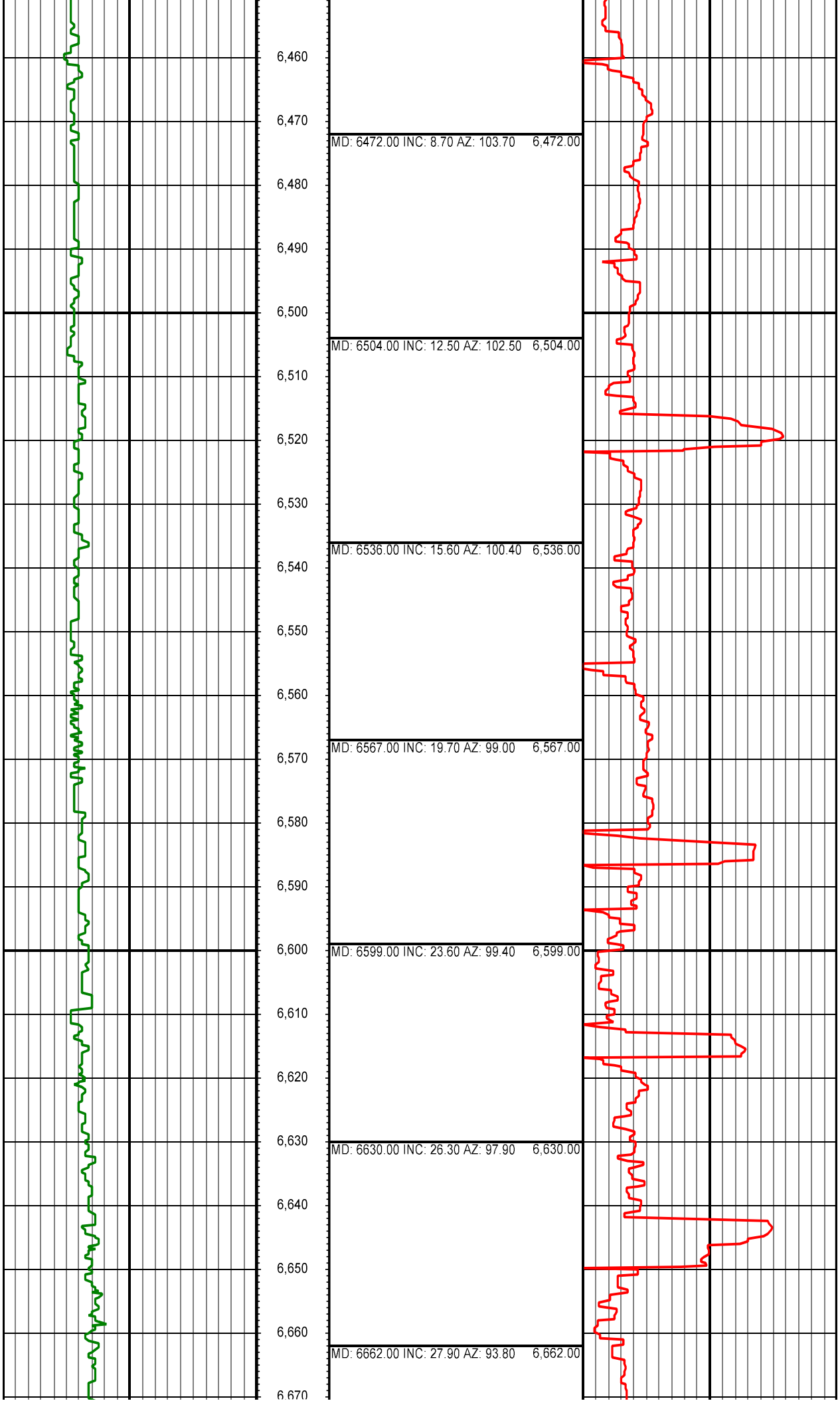


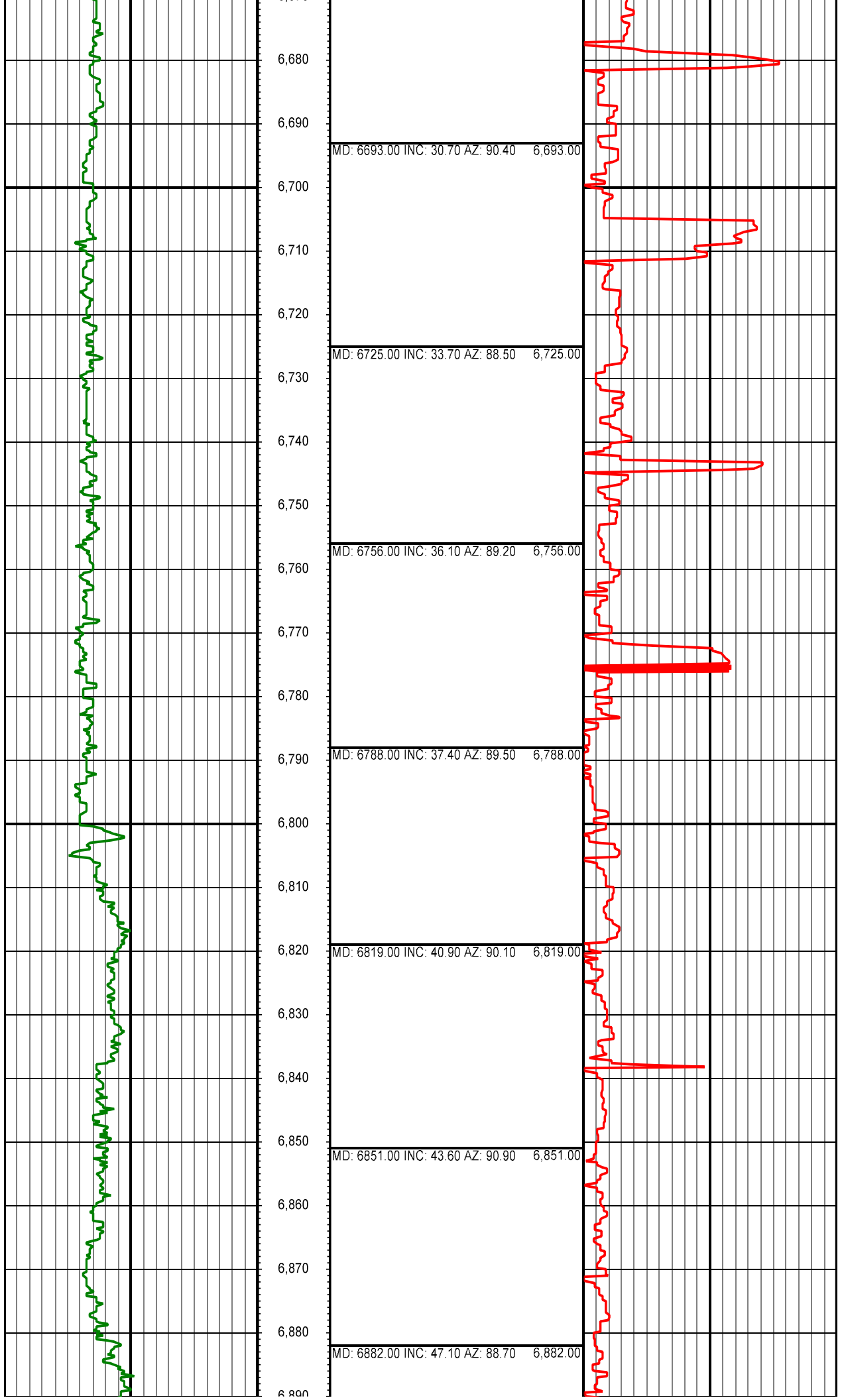


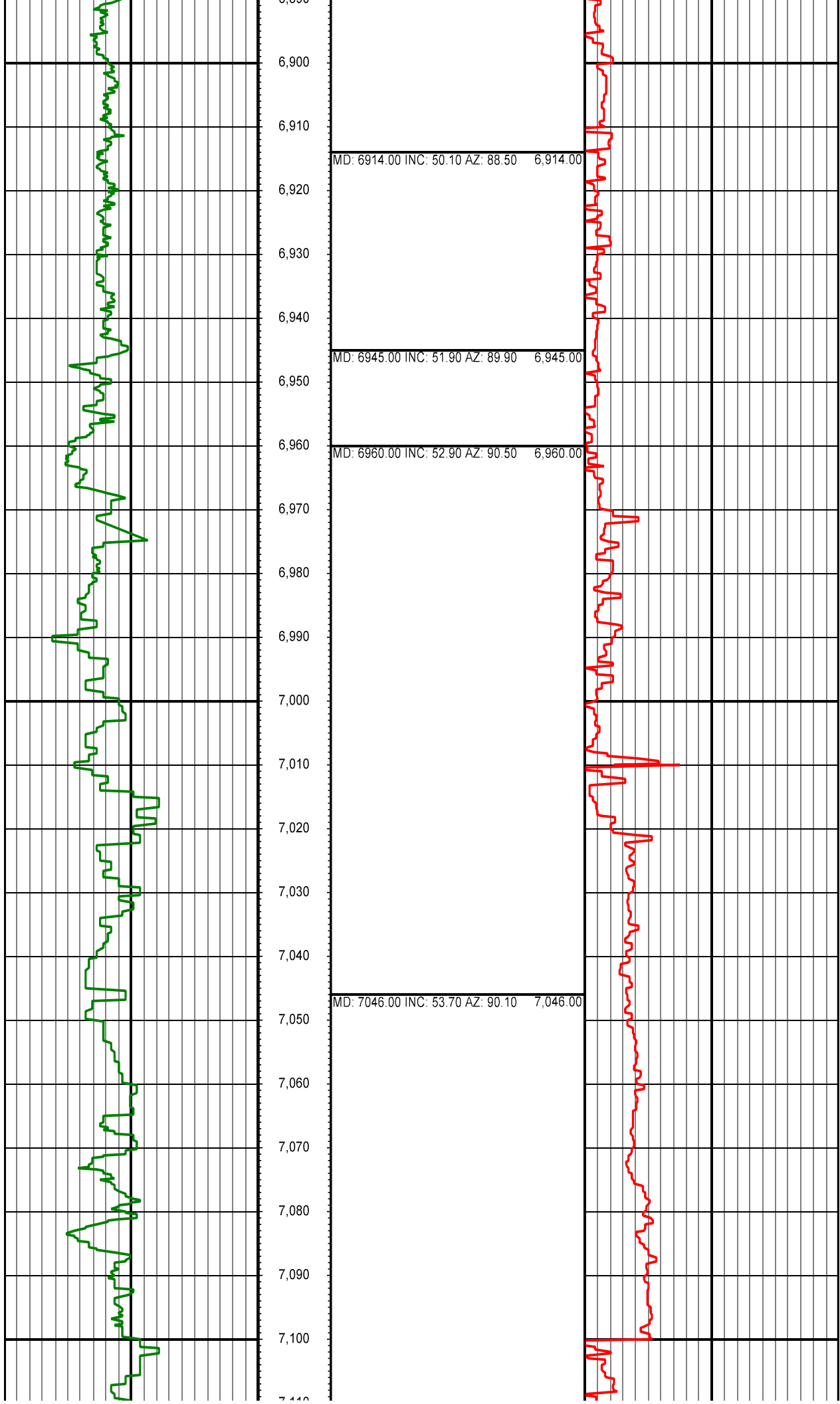


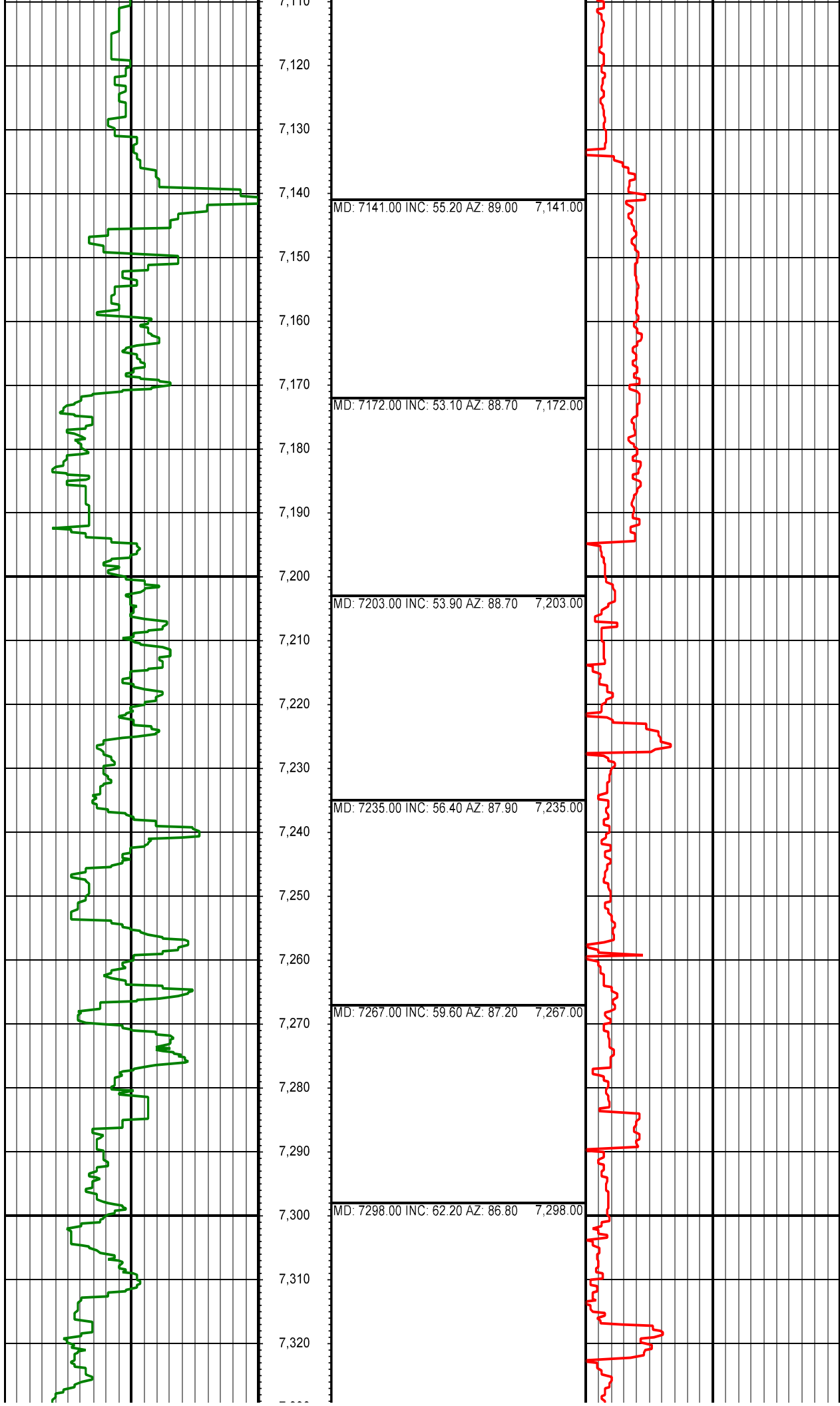


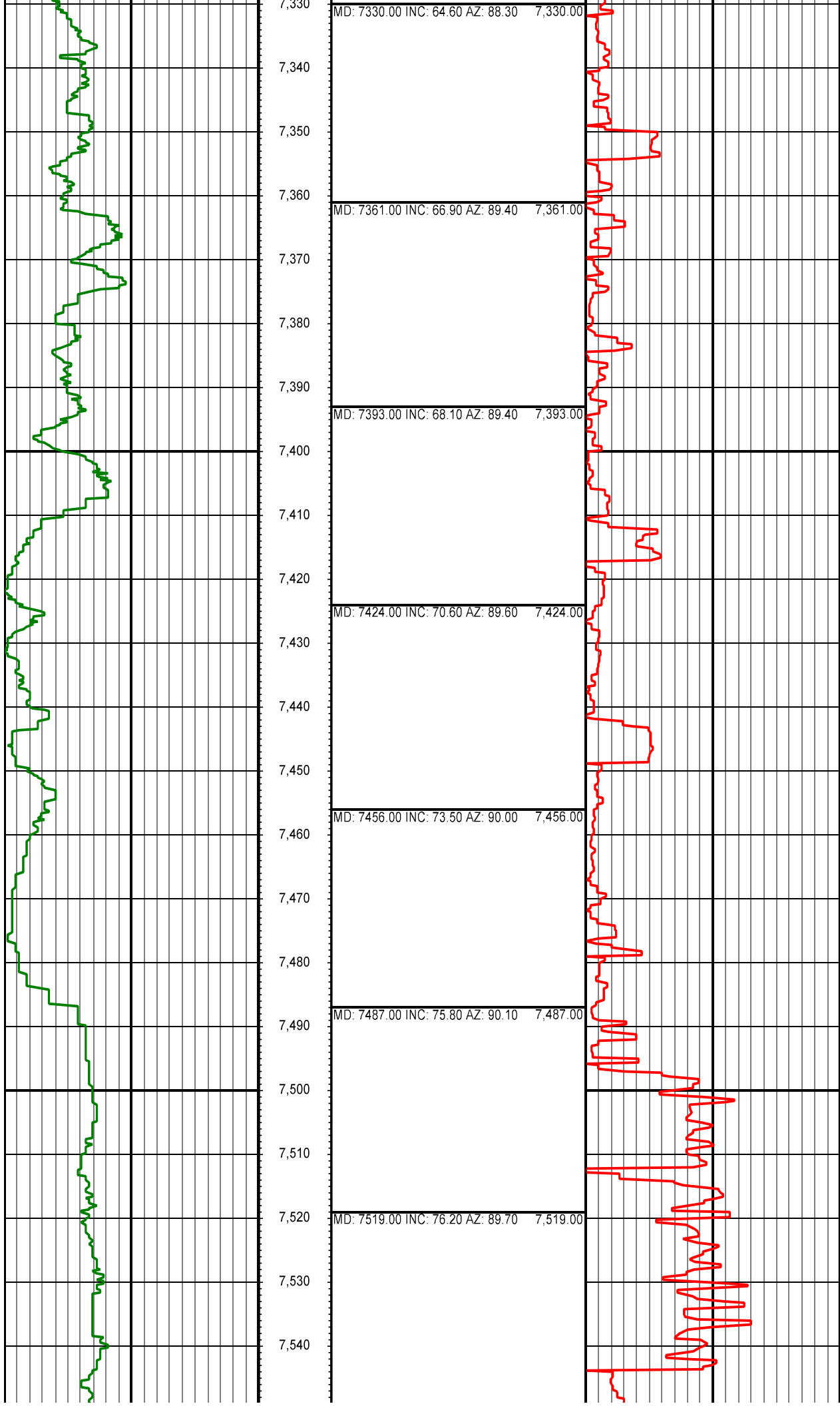




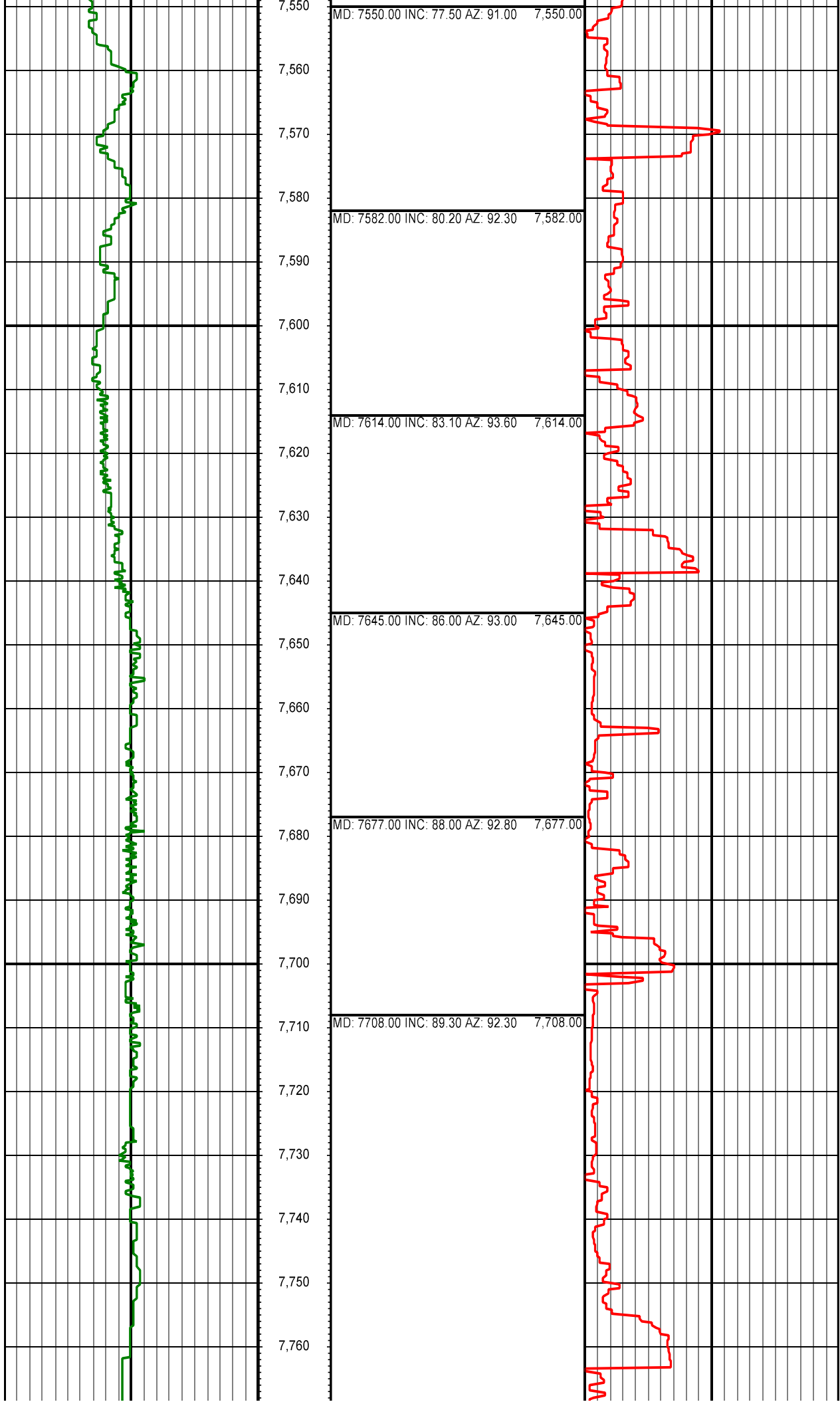


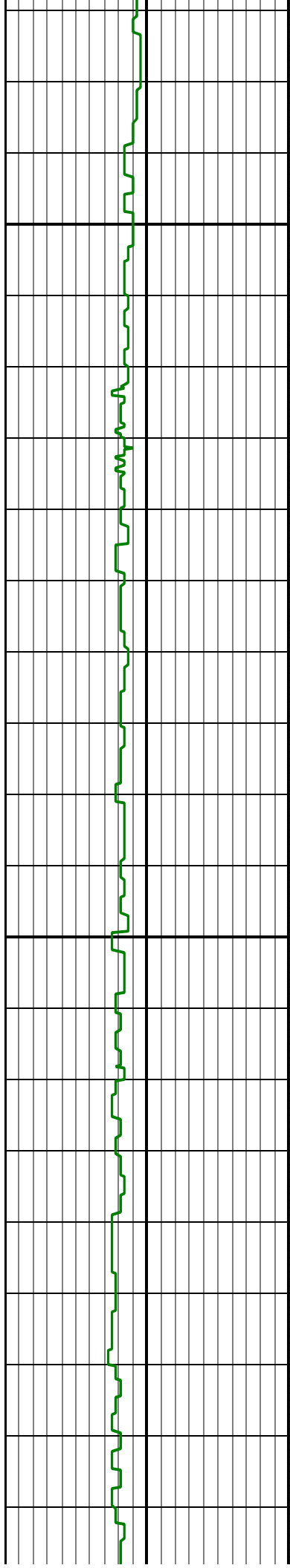








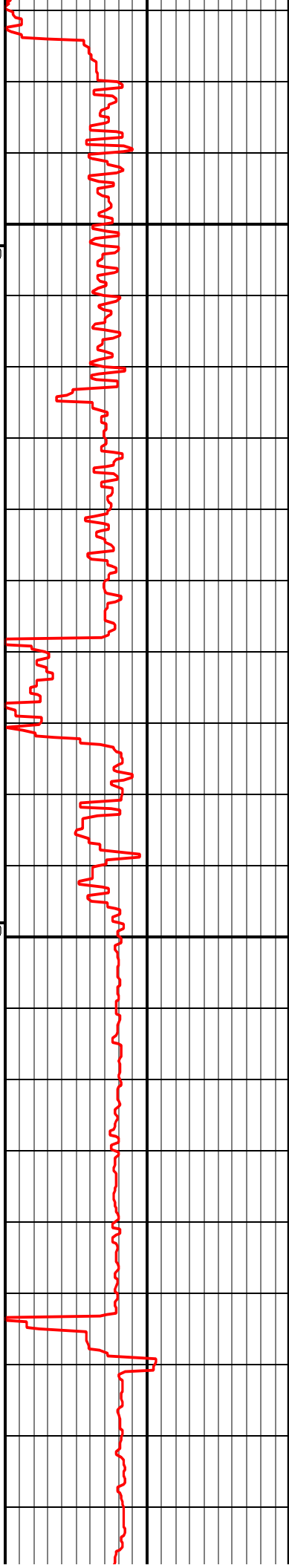


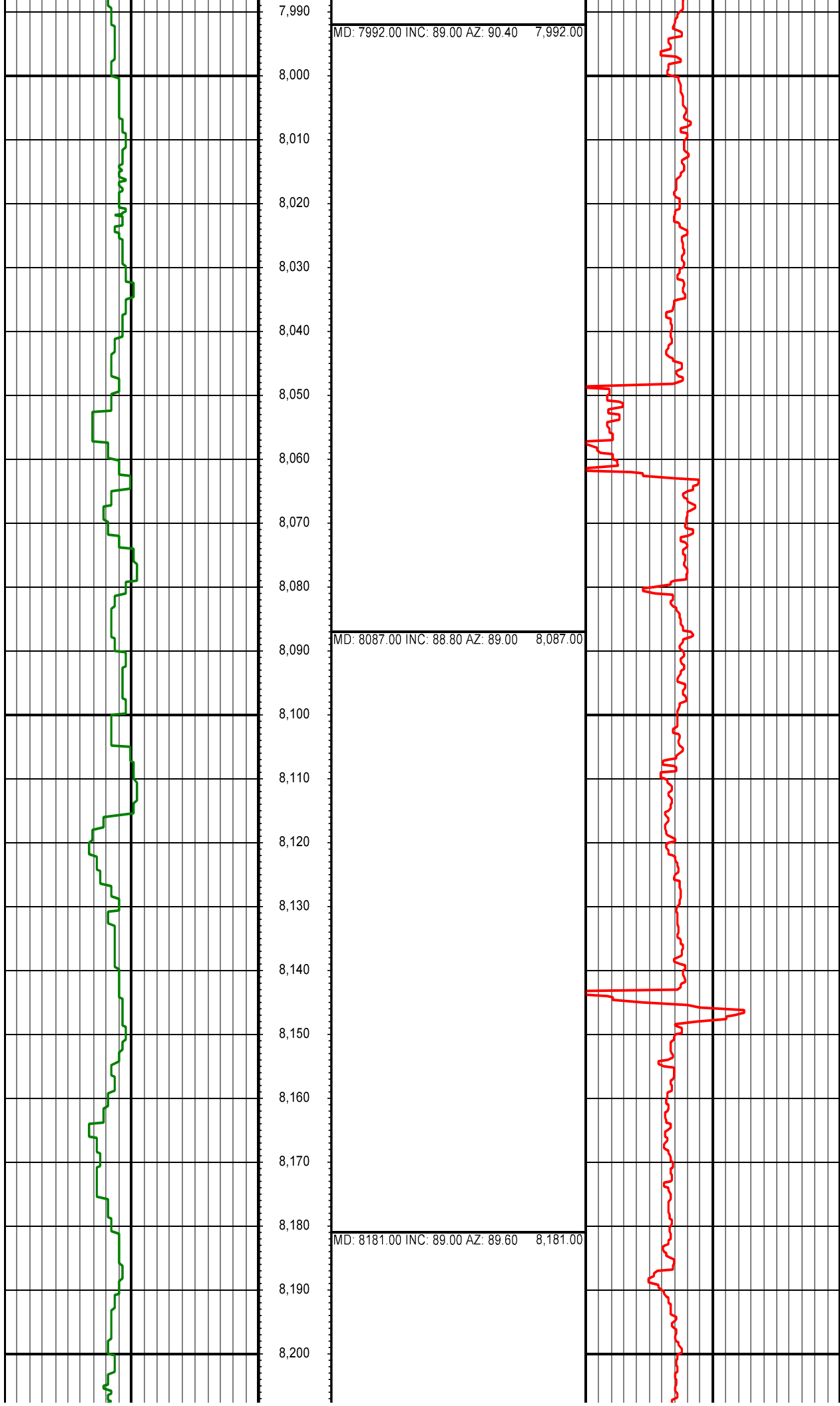


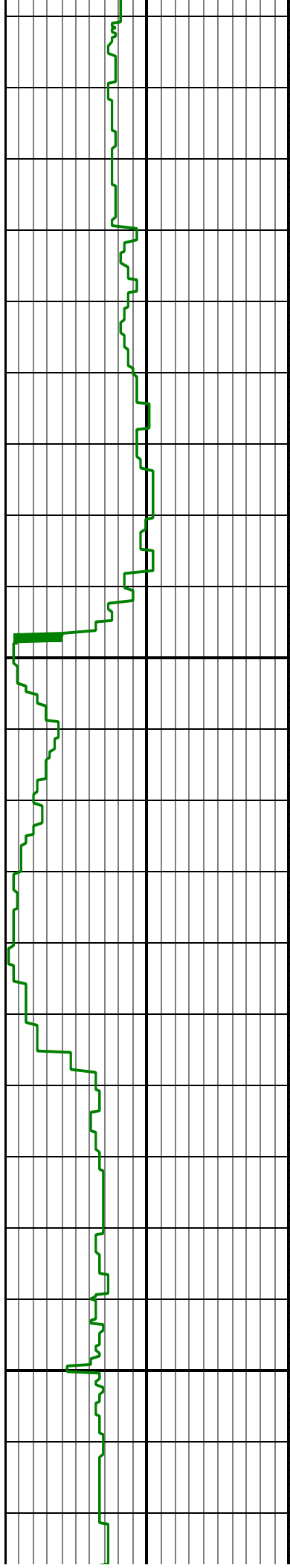
7,770  
7,780  
7,790  
7,800  
7,810  
7,820  
7,830  
7,840  
7,850  
7,860  
7,870  
7,880  
7,890  
7,900  
7,910  
7,920  
7,930  
7,940  
7,950  
7,960  
7,970  
7,980

MD: 7803.00 INC: 89.40 AZ: 91.00 7,803.00

MD: 7898.00 INC: 88.90 AZ: 90.00 7,898.00







8,210  
8,220  
8,230  
8,240  
8,250  
8,260  
8,270  
8,280  
8,290  
8,300  
8,310  
8,320  
8,330  
8,340  
8,350  
8,360  
8,370  
8,380  
8,390  
8,400  
8,410  
8,420

MD: 8276.00 INC: 87.40 AZ: 88.50 8,276.00

MD: 8371.00 INC: 86.00 AZ: 88.70 8,371.00

