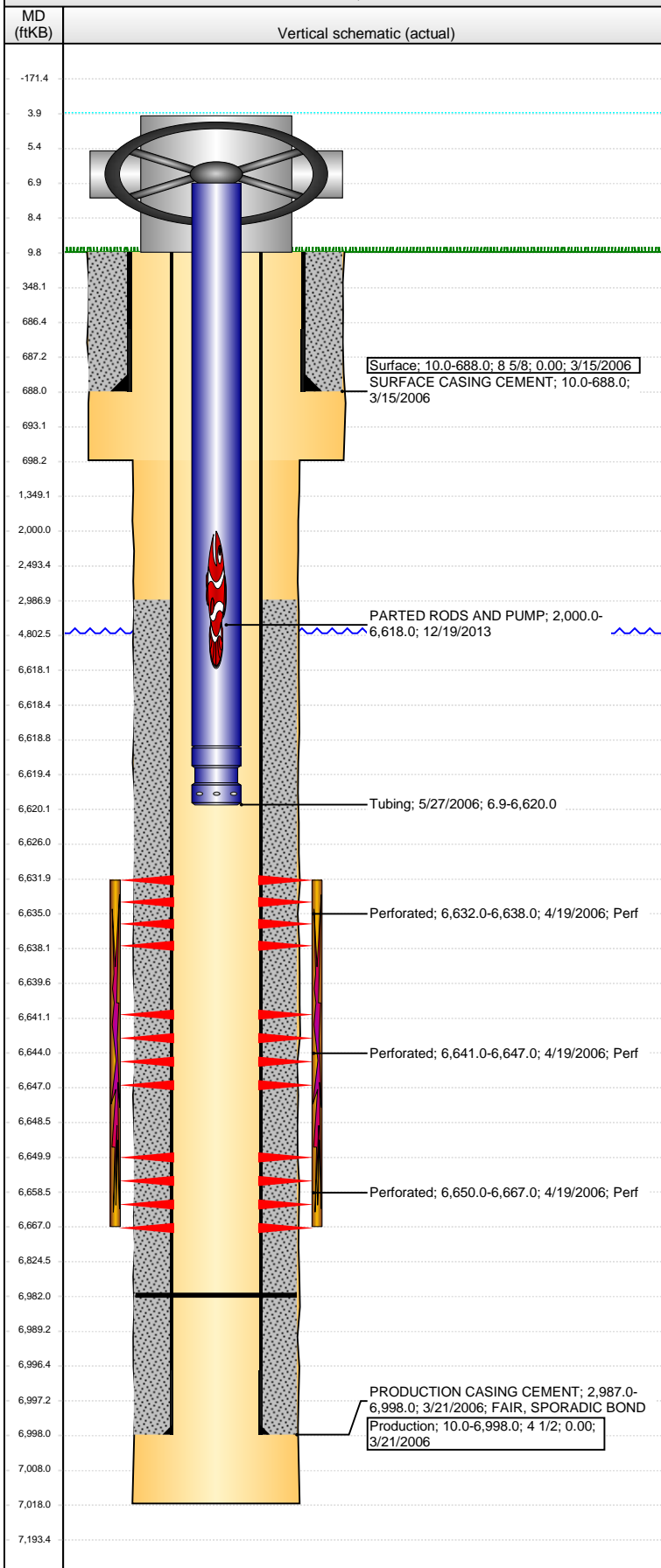


**Well Name:** RAY 32-44

VERTICAL - ORIGINAL HOLE, 12/20/2013 8:49:33 AM



## Well Header

API 05-123-23514	Business Unit WATTENBERG	District 15	Well Config VERTICAL
Original KB Elevation (ft) 4,730.00	KB - GL / MSL (ftKB) 10.00	Spud Date 3/14/2006	P & A Date

## Comment

WELL HAS PARTED RODS AND PUMP. POLISHED ROD & 71 3/4" RODS WERE PULLED OUT OF THE HOLE BEFORE RODS PARTED. RODS PARTED FROM PULLING OVER STRING WEIGHT (PARAFFIN)

## Directions To Well

RD 65 & 74, W 1/10, N INTO.

## Congressional Location

Quarter 1	Quarter 2	Quarter 3	Quarter 4	Section	Township	Twntshp N...	Range	Rng E/W Dir
	SW	SE	SE	32	7	N	63	W

## Bottom Hole Location

North-South Distance (ft)	From N or S Line	East-West Distance (ft)	From E or W Line
---------------------------	------------------	-------------------------	------------------

## Plug Back Total Depths

Date	Depth (ftKB)	Method	Com
3/20/2006	6,982.0	CASED HOLE LOG	DEPTH LOGGER ON CBL

## Wellbore Sections

Section Des	Size (in)	Act Top, MD (ftKB)	Act Btm, MD (ftKB)
SURFACE	12 1/4	10.0	698.0
PRODUCTION	7 7/8	698.0	7,018.0

## Zone Statuses

Zone Name	Status Date	Status	Job
NIOBRARA	4/24/2006	PR	DRILLING/COMPLETION - ORIGINAL, 3/14/2006 06:00

## Casing Strings

### Surface, 688.0ftKB

Casing Description	Run Date	OD (in)	Wt/Len (l...)	Grade	Top, MD (ft...)	MD (ftKB)
Surface	3/15/2006	8 5/8			10.0	688.0

### Production, 6,998.0ftKB

Casing Description	Run Date	OD (in)	Wt/Len (l...)	Grade	Top, MD (ft...)	MD (ftKB)
Production	3/21/2006	4 1/2			10.0	6,998.0

## Cement

Description	Top Depth (ftKB)	Bottom Depth (ftKB)
SURFACE CASING CEMENT	10.0	688.0
PRODUCTION CASING CEMENT	2,987.0	6,998.0

## Tubing Components

Item Des	OD (in)	Wt (lb/ft)	Grade	Jts	Len (ft)	Btm (ftKB)	Btm (TVD) (ftKB)
Tubing	2 3/8				6,612.00	6,618.9	
Pump Seating Nipple	2 3/8				1.10	6,620.0	

## Perforation Data

Zone	Bnch/St g	Entered Shot Total	Top (ftKB)	Btm (ftKB)	Date
NIOBRARA, ORIGINAL HOLE			6,632.00	6,638.00	4/19/2006
NIOBRARA, ORIGINAL HOLE			6,641.00	6,647.00	4/19/2006
NIOBRARA, ORIGINAL HOLE			6,650.00	6,667.00	4/19/2006

## Stimulations & Treatments

Date	Zone	Primary Job Type
4/20/2006	NIOBRARA, ORIGINAL HOLE	DRILLING/COMPLETION - ORIGINAL
Technical Result		Tech Result Details
		Tech Result Note

## Comment

## Other In Hole

Run Date	Des	OD (in)	Top (ftKB)	Btm (ftKB)
12/19/2013	PARTED RODS AND PUMP	1	2,000.0	6,618.0

## Logs

Date	Type	Top, MD (ftKB)	Btm, MD (ftKB)
3/20/2006	COMPENSATED DENSITY	3,500.0	6,996.0
3/20/2006	INDUCTION	688.0	7,016.0
4/4/2006	CBL/CCL/GR	2,900.0	6,976.0