



Cathedral Energy Services

135353

5":100' - MD

8/26/2013 6:57:29 AM

Oper. Company: Encana

Country: USA

State / Province: CO

County / Parish: Weld

Started: 08/15/2013 06:00 PM

API/UWI:

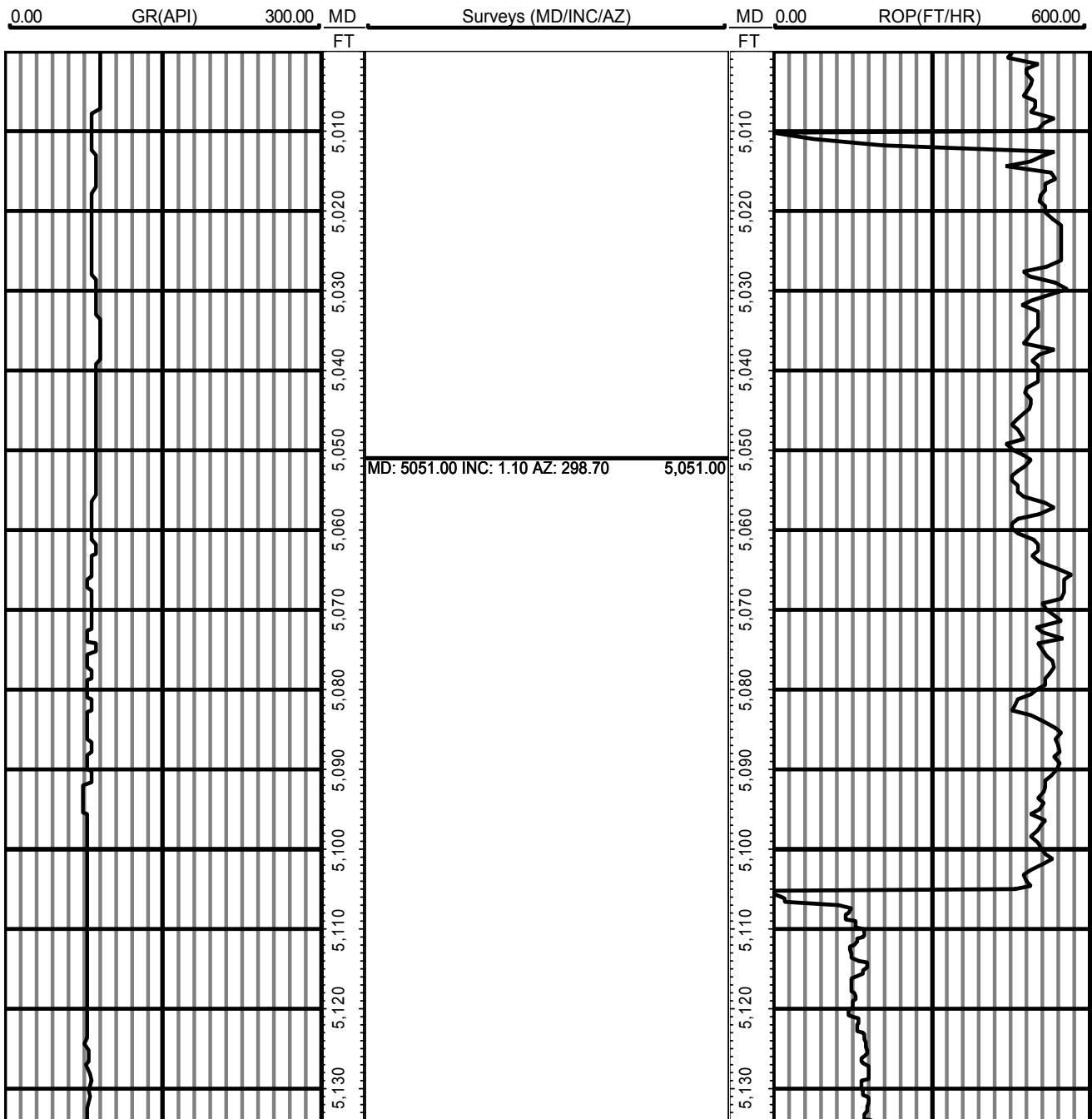
Field: DJ Wattenburg

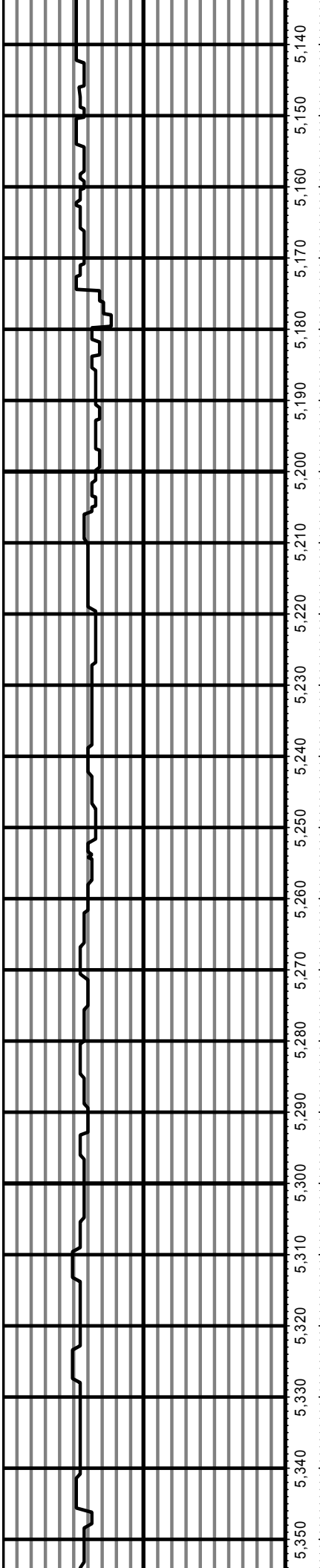
Well: QUALLS 3D-28H

Rig: H&P 278

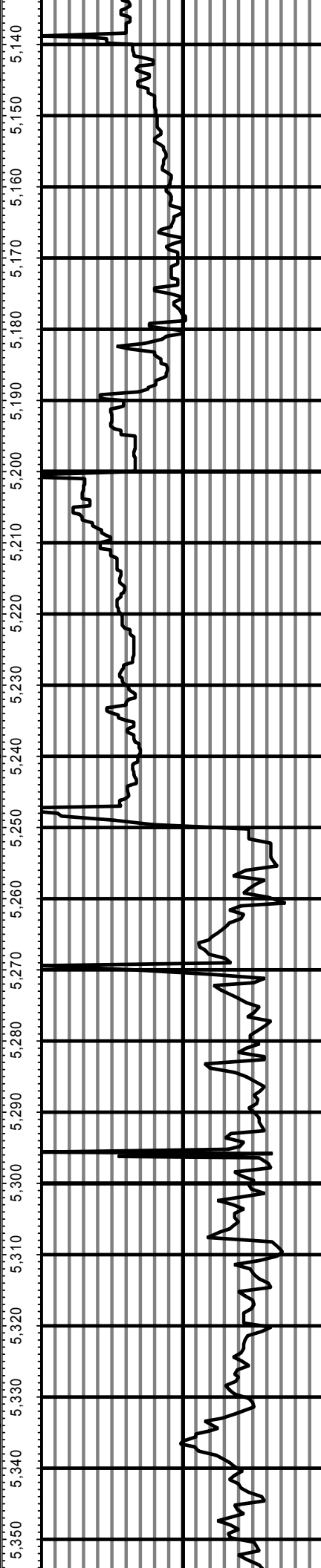
Ended: 08/26/2013 06:29 PM

All interpretations are opinions based on inferences from electrical or other measurements and we cannot and do not guarantee the accuracy or correctness of any interpretation, and we shall not except in the case of gross or willful negligence on our part, be liable or responsible for any loss, cost damages or expenses incurred or sustained by anyone resulting from an interpretation made by any of our officers, agents, or employees.



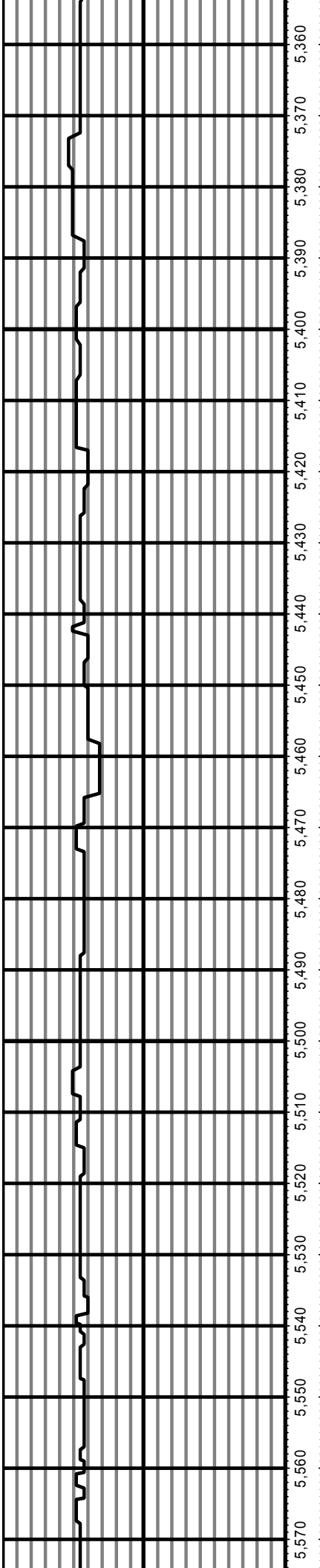


MD: 5145.00 INC: 0.70 AZ: 204.50 5,145.00

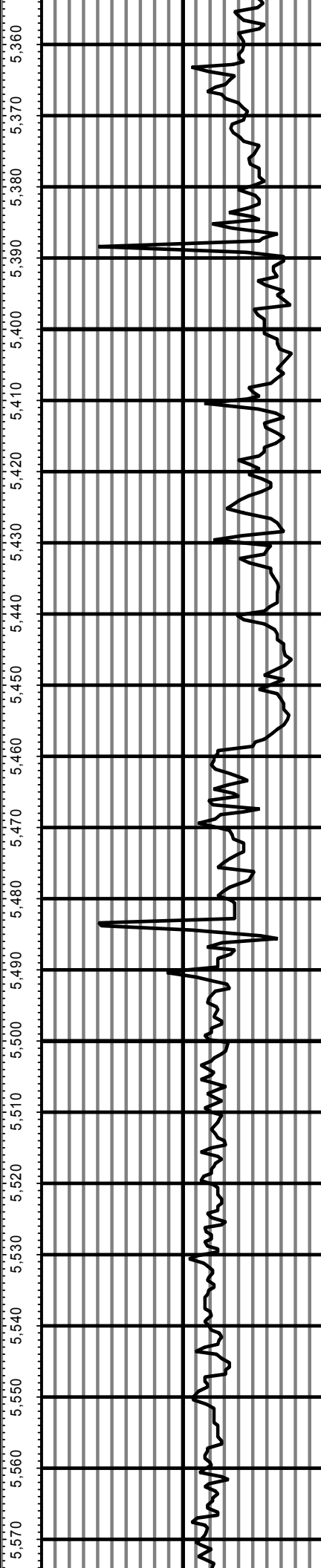


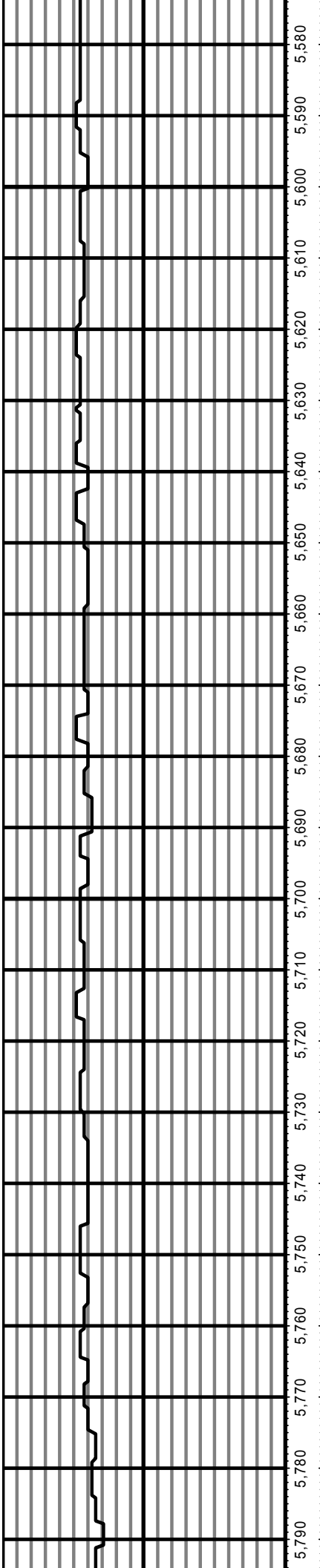
MD: 5240.00 INC: 2.00 AZ: 158.70 5,240.00

MD: 5334.00 INC: 1.50 AZ: 181.90 5,334.00



MD: 5429.00 INC: 1.30 AZ: 184.30 5,429.00





5,790 5,780 5,770 5,760 5,750 5,740 5,730 5,720 5,710 5,700 5,690 5,680 5,670 5,660 5,650 5,640 5,630 5,620 5,610 5,600 5,590 5,580

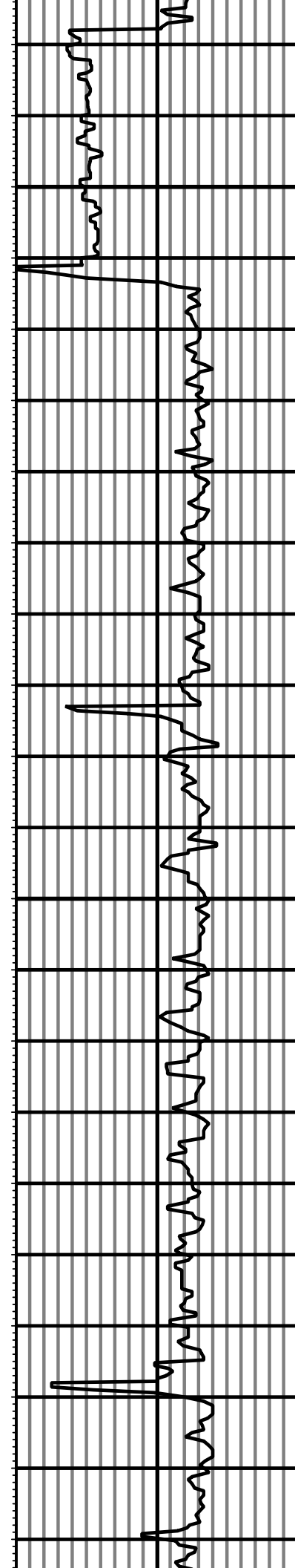
MD: 5618.00 INC: 0.40 AZ: 55.50

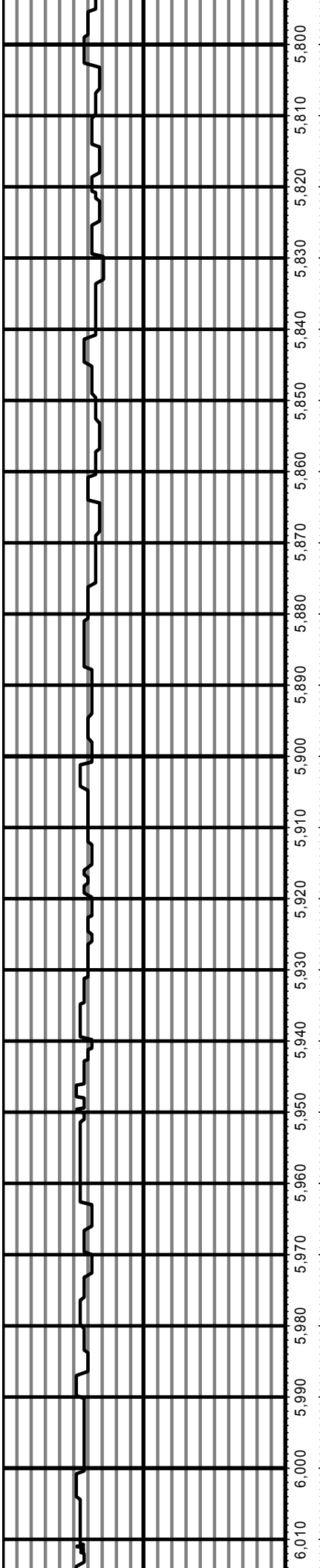
5,618.00

MD: 5713.00 INC: 0.50 AZ: 342.80

5,713.00

5,790 5,780 5,770 5,760 5,750 5,740 5,730 5,720 5,710 5,700 5,690 5,680 5,670 5,660 5,650 5,640 5,630 5,620 5,610 5,600 5,590 5,580

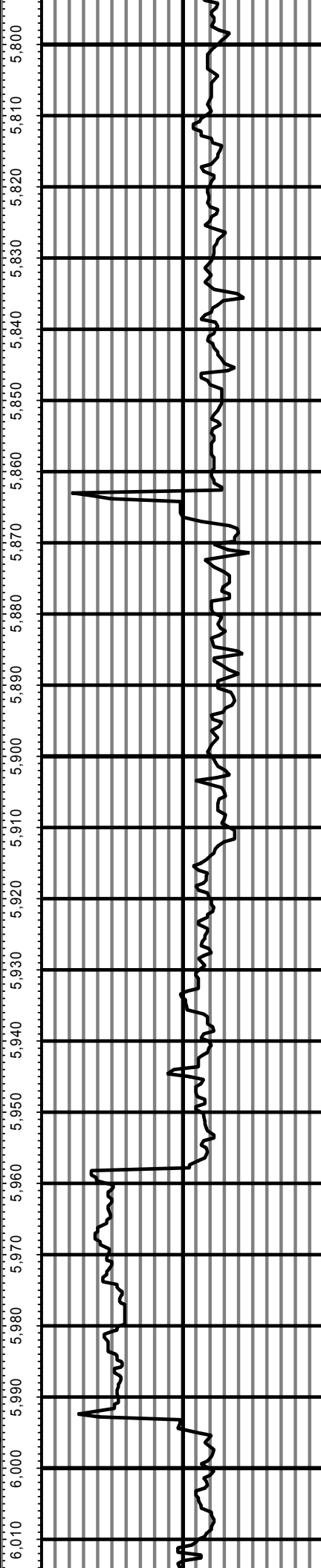


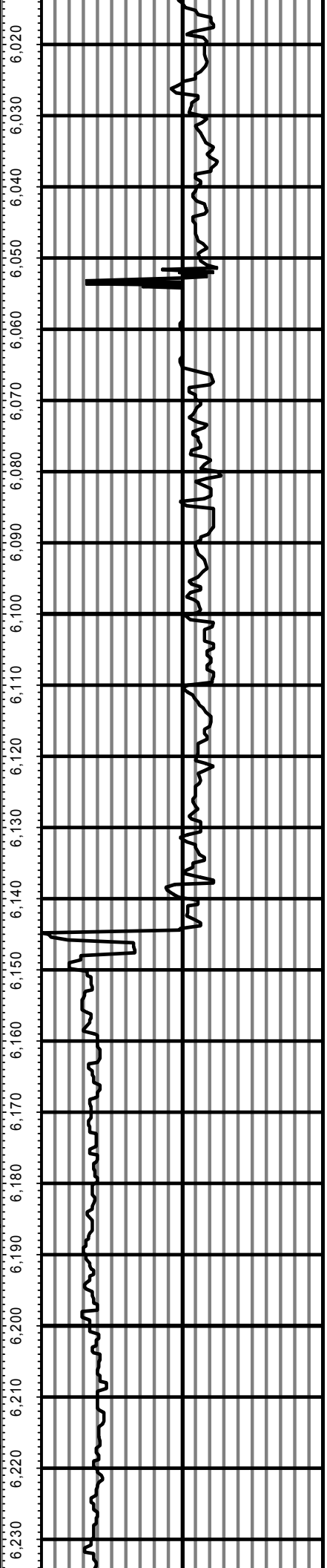
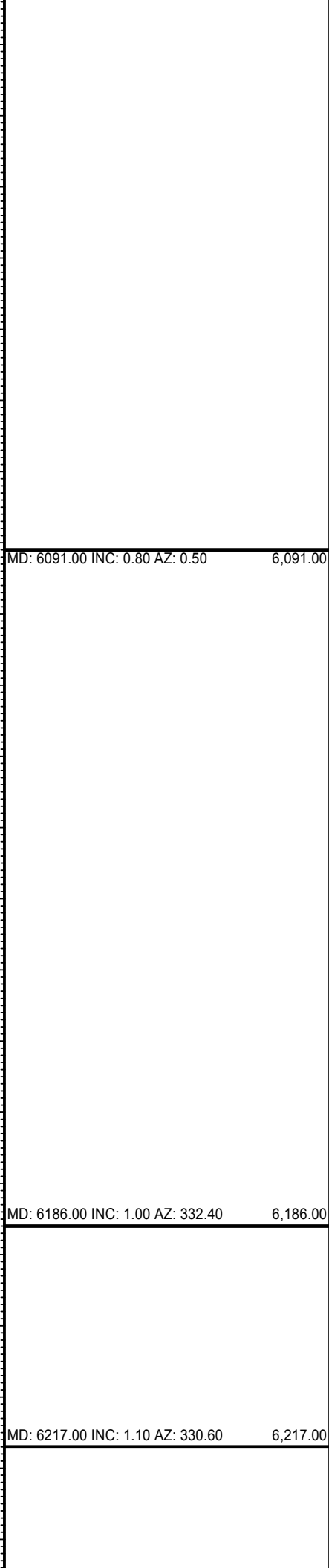
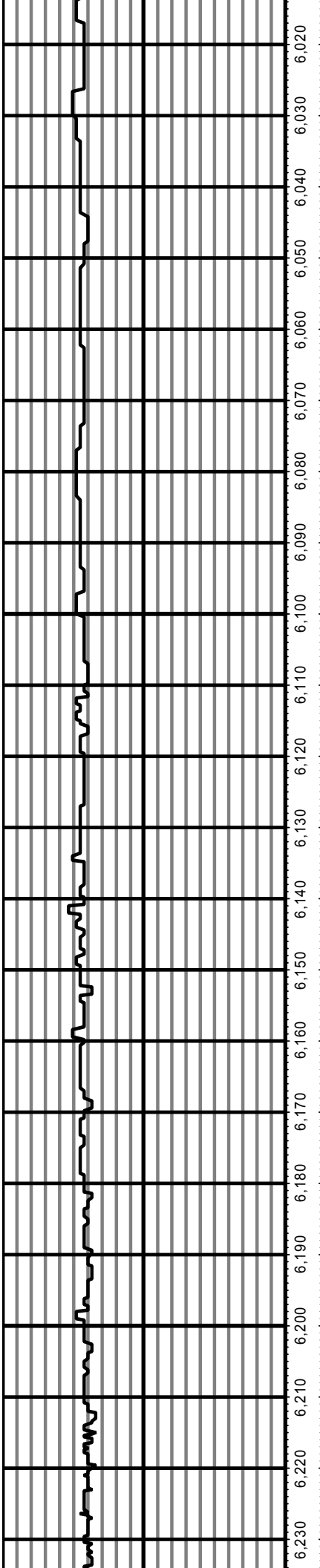


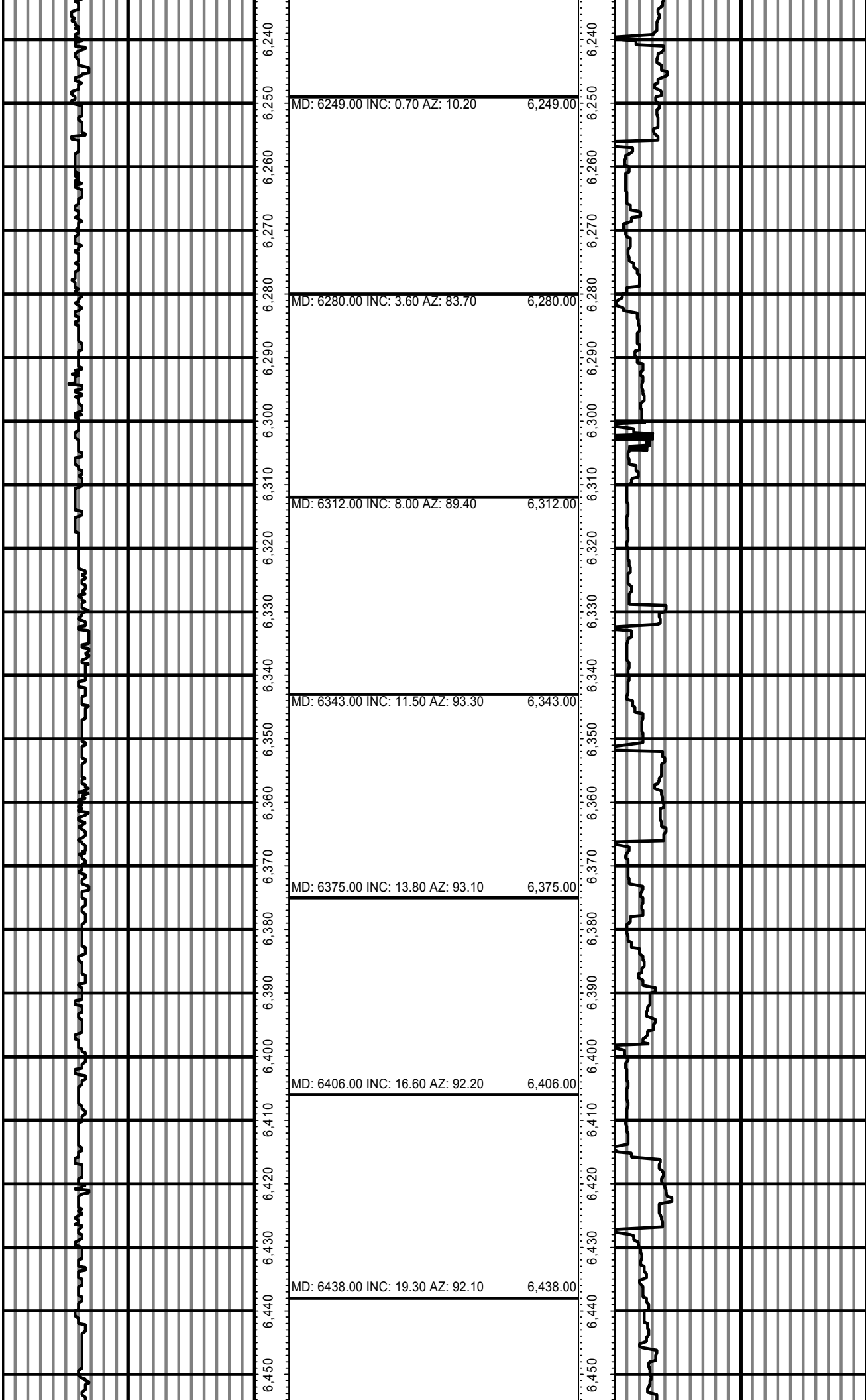
MD: 5807.00 INC: 0.50 AZ: 328.60 5,807.00

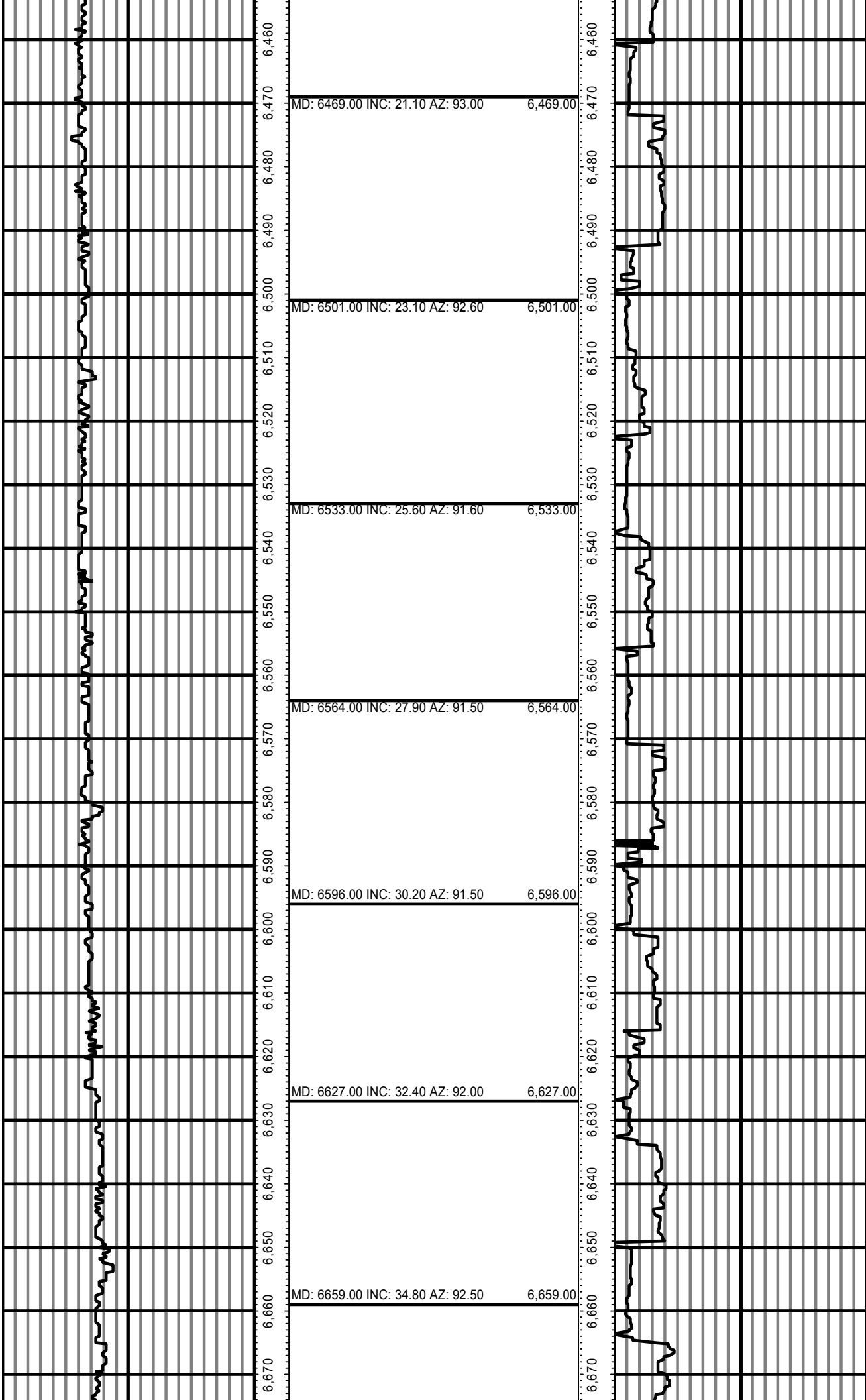
MD: 5902.00 INC: 0.80 AZ: 284.50 5,902.00

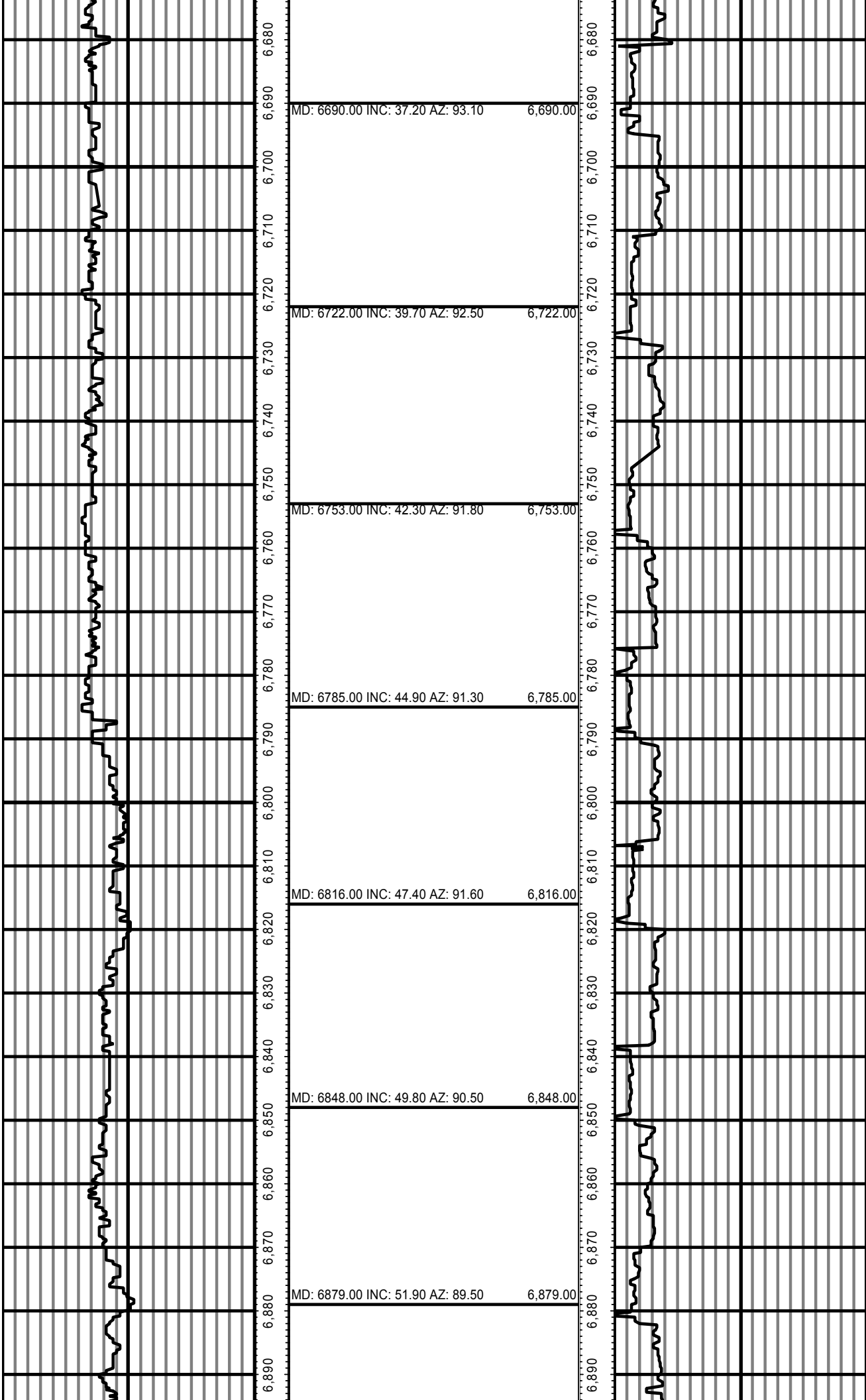
MD: 5996.00 INC: 1.40 AZ: 11.80 5,996.00











MD: 6690.00 INC: 37.20 AZ: 93.10 6,690.00

MD: 6722.00 INC: 39.70 AZ: 92.50 6,722.00

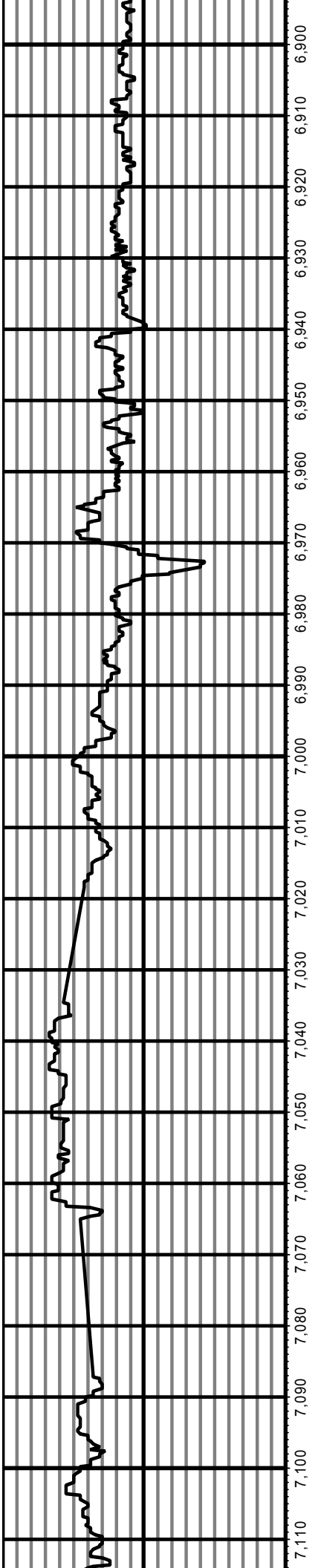
MD: 6753.00 INC: 42.30 AZ: 91.80 6,753.00

MD: 6785.00 INC: 44.90 AZ: 91.30 6,785.00

MD: 6816.00 INC: 47.40 AZ: 91.60 6,816.00

MD: 6848.00 INC: 49.80 AZ: 90.50 6,848.00

MD: 6879.00 INC: 51.90 AZ: 89.50 6,879.00



MD: 6911.00 INC: 54.00 AZ: 88.20 6,911.00

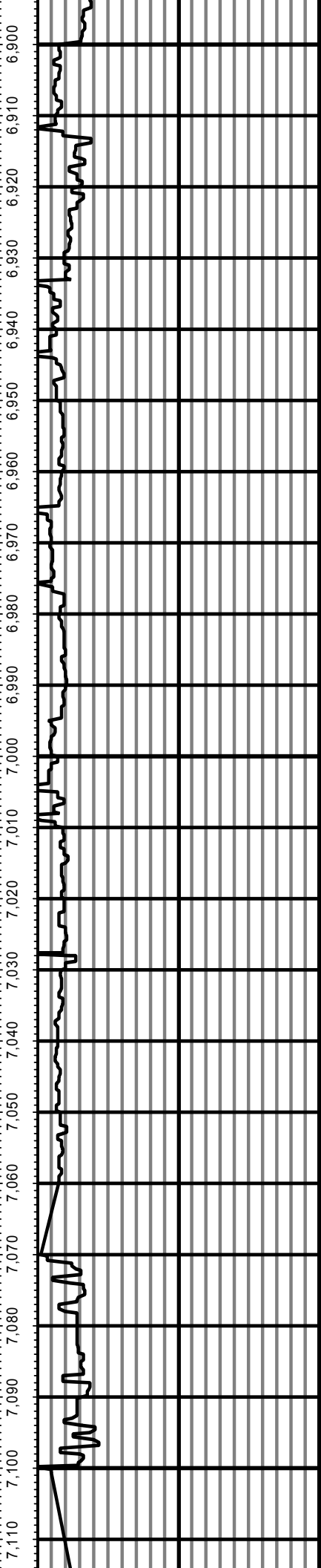
MD: 6942.00 INC: 56.10 AZ: 87.70 6,942.00

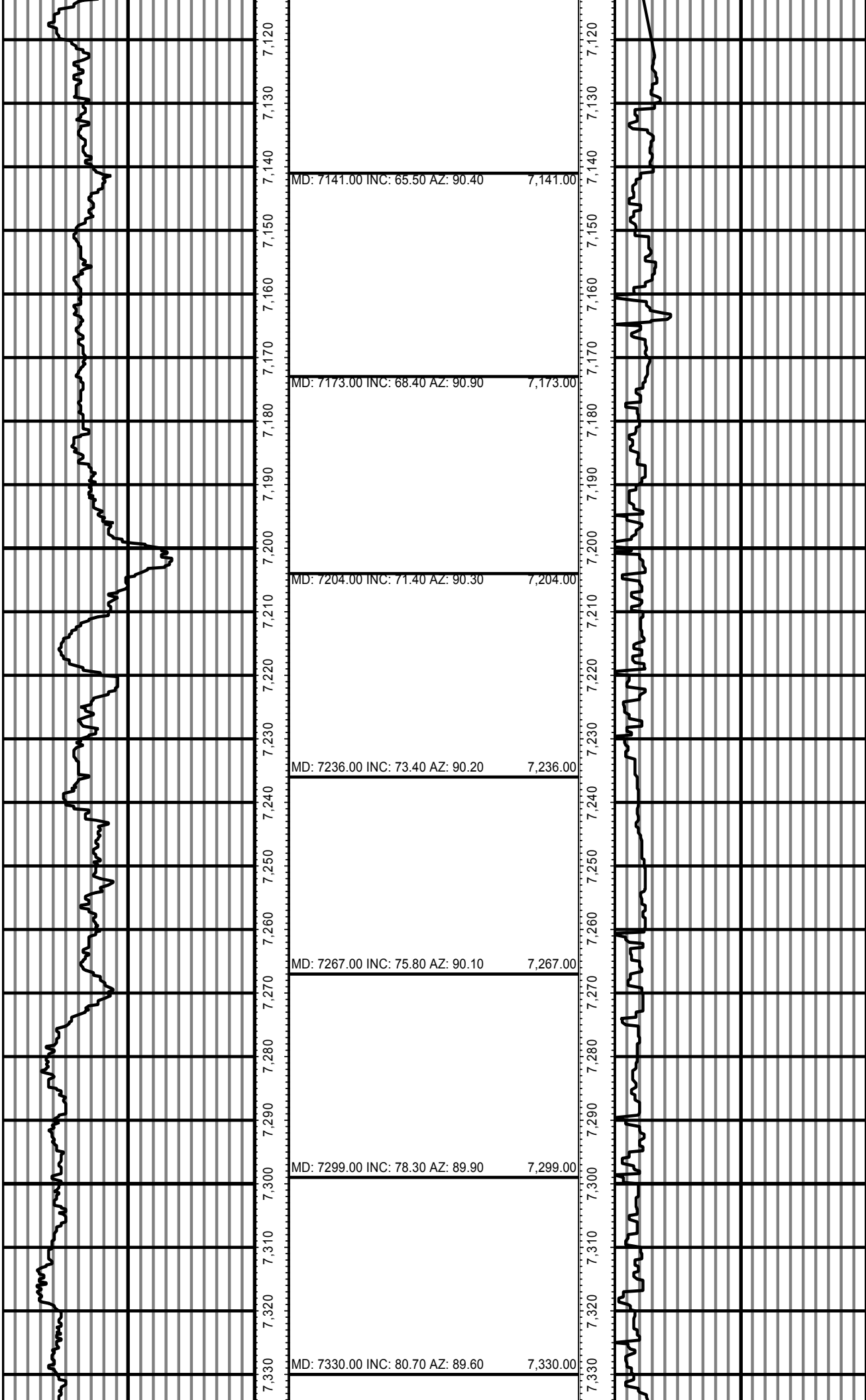
MD: 6974.00 INC: 58.20 AZ: 88.00 6,974.00

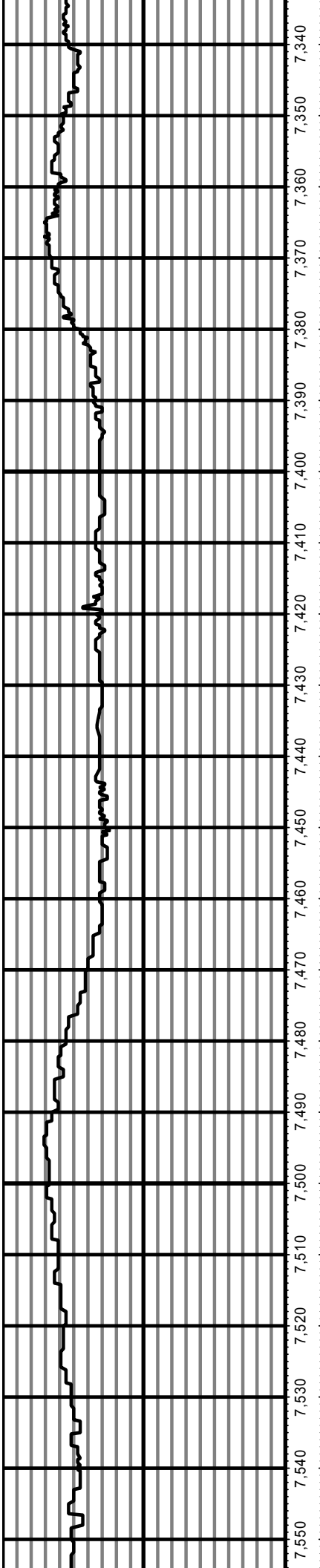
MD: 7007.00 INC: 60.00 AZ: 88.90 7,007.00

MD: 7078.00 INC: 60.50 AZ: 90.20 7,078.00

MD: 7110.00 INC: 62.50 AZ: 90.00 7,110.00





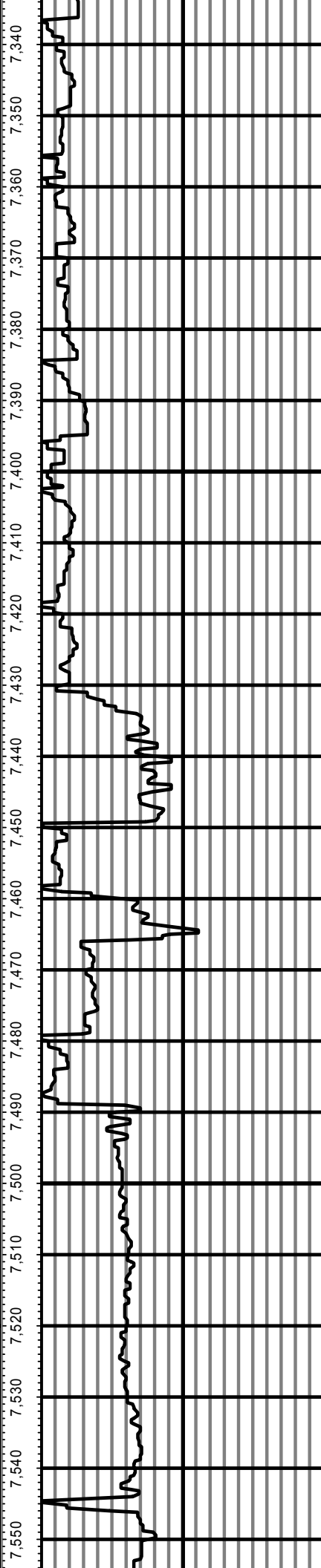


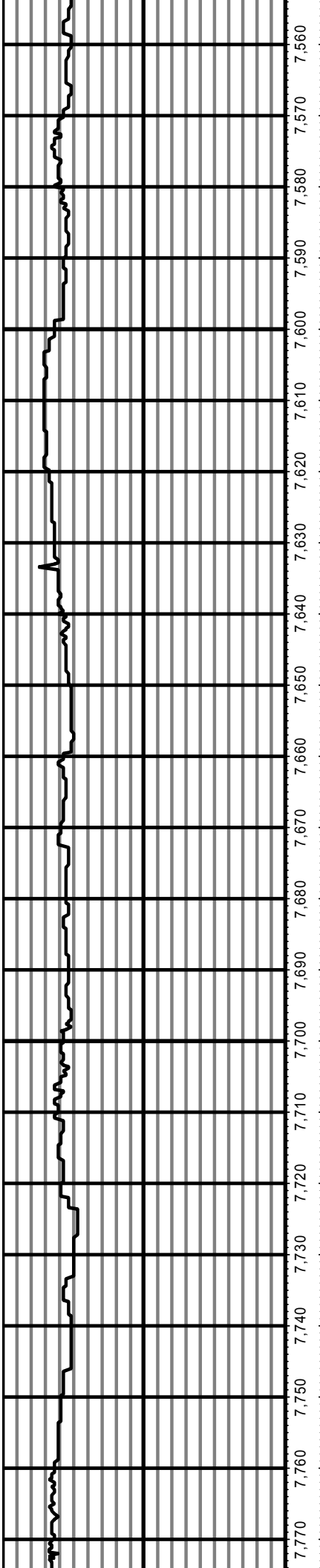
MD: 7362.00 INC: 83.50 AZ: 89.00 7,362.00

MD: 7393.00 INC: 85.80 AZ: 89.40 7,393.00

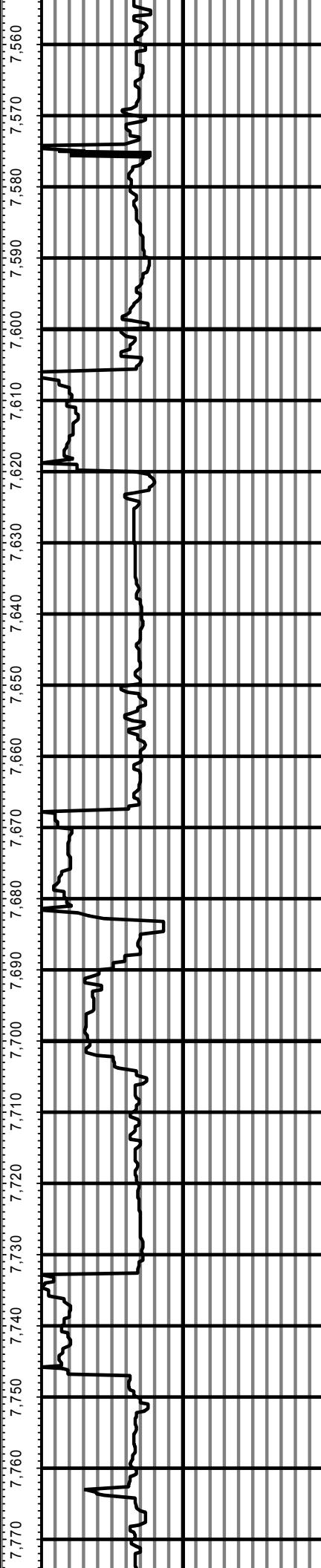
MD: 7425.00 INC: 88.20 AZ: 89.10 7,425.00

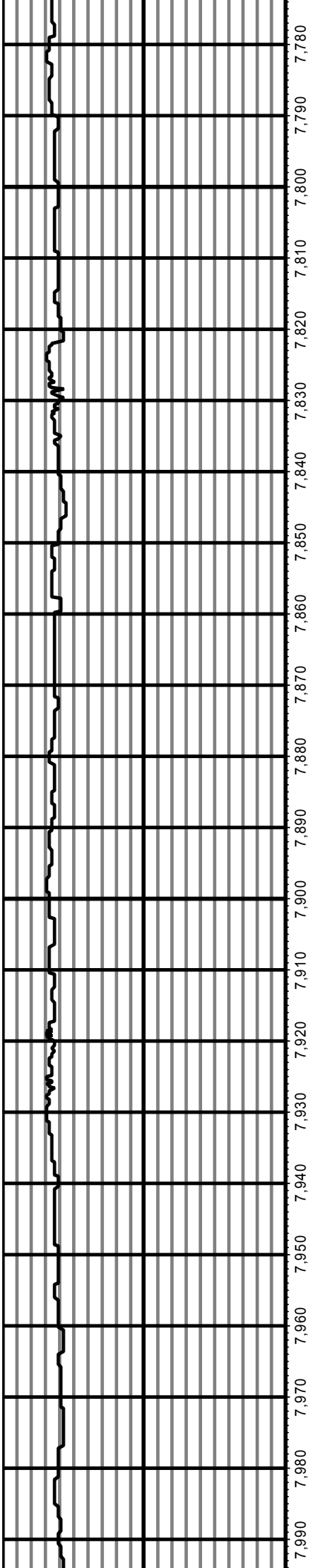
MD: 7520.00 INC: 90.40 AZ: 90.10 7,520.00





MD: 7614.00 INC: 90.40 AZ: 89.10 7,614.00

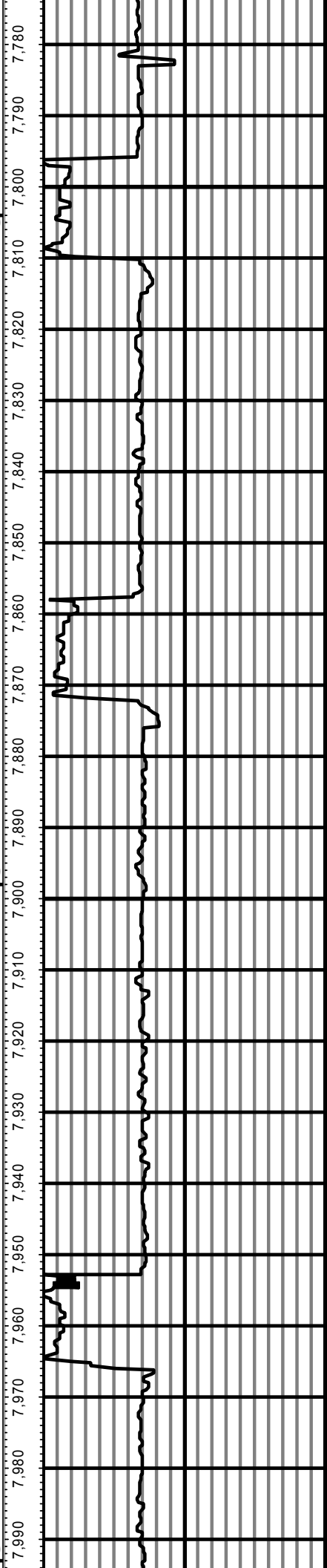


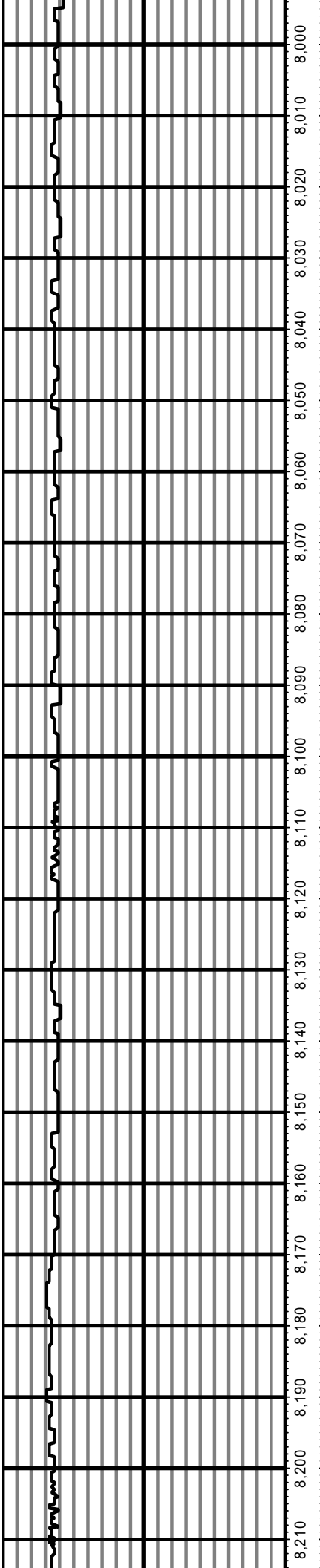


MD: 7804.00 INC: 88.50 AZ: 90.90 7,804.00

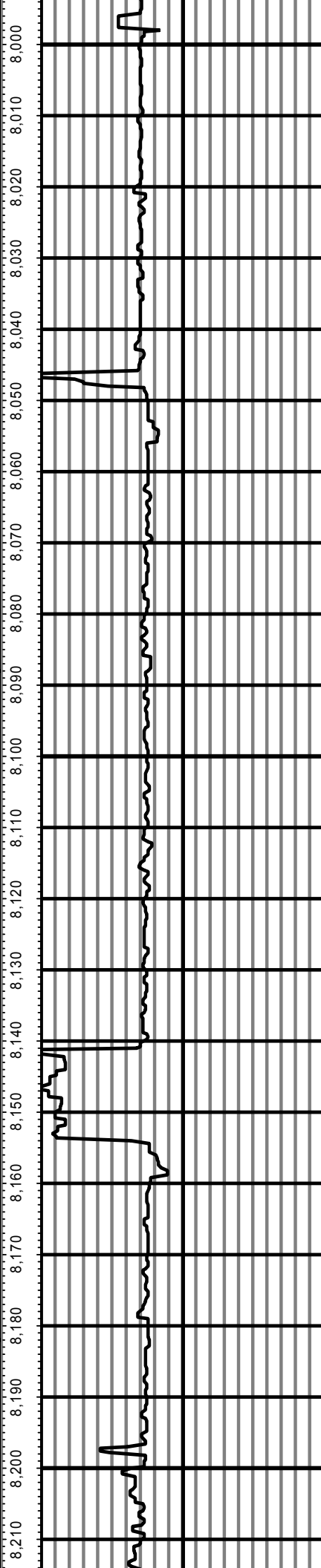
MD: 7898.00 INC: 88.10 AZ: 92.50 7,898.00

MD: 7993.00 INC: 86.90 AZ: 91.30 7,993.00

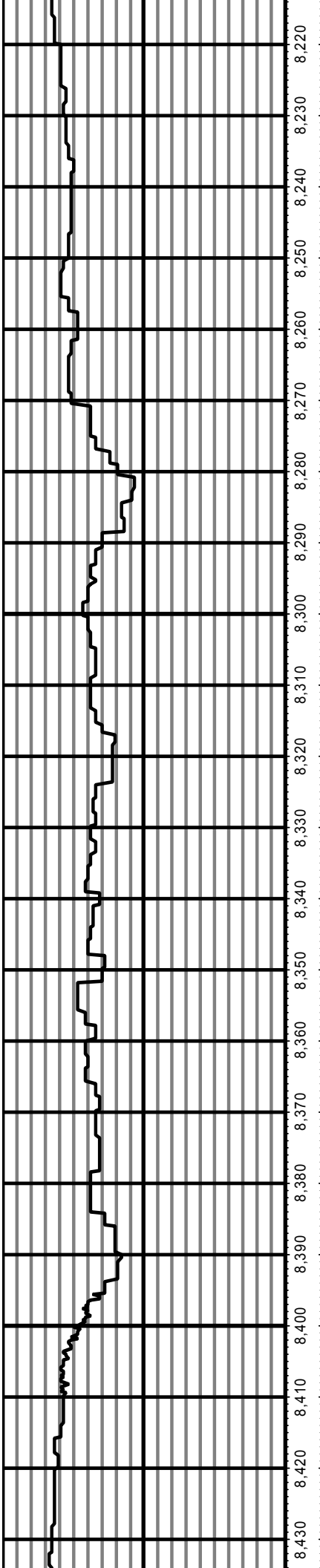




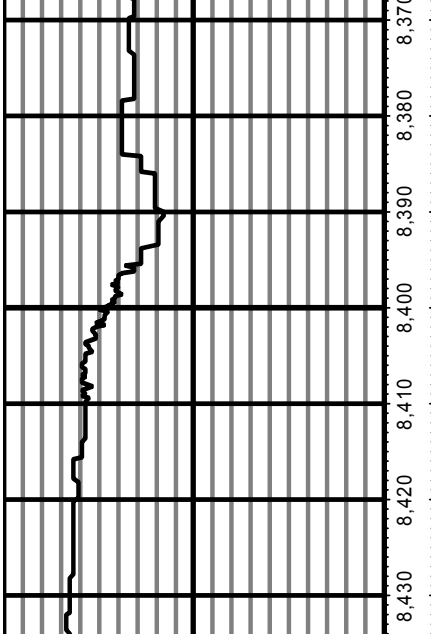
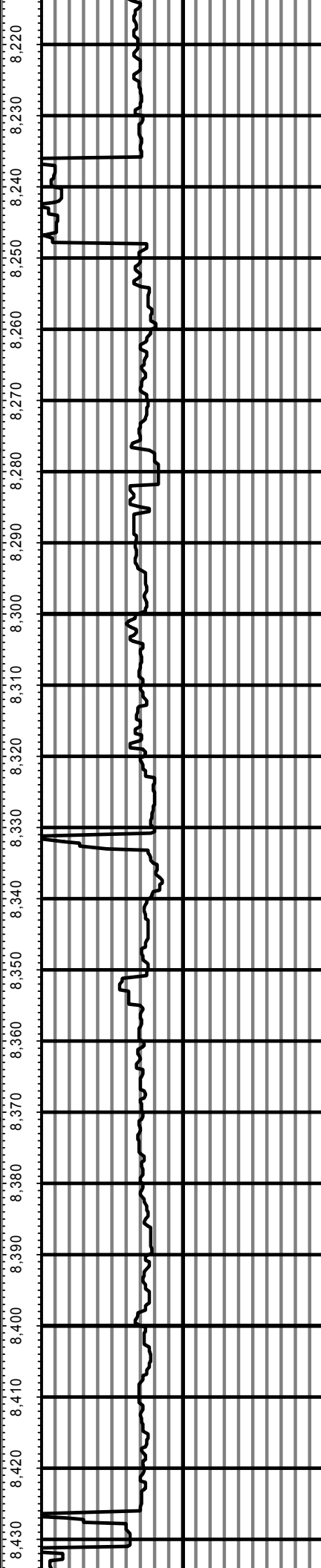
MD: 8088.00 INC: 87.40 AZ: 88.70 8,088.00



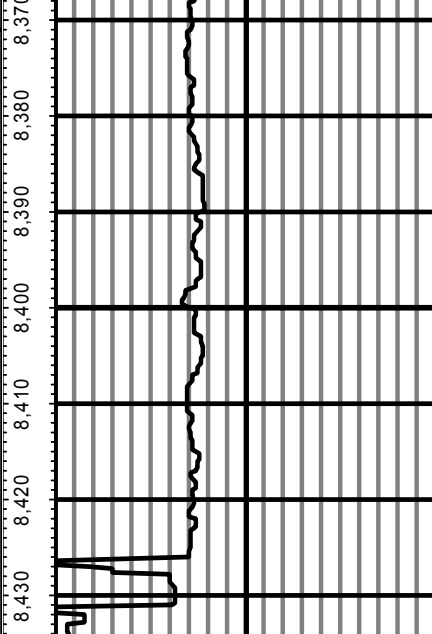
MD: 8182.00 INC: 87.40 AZ: 89.50 8,182.00

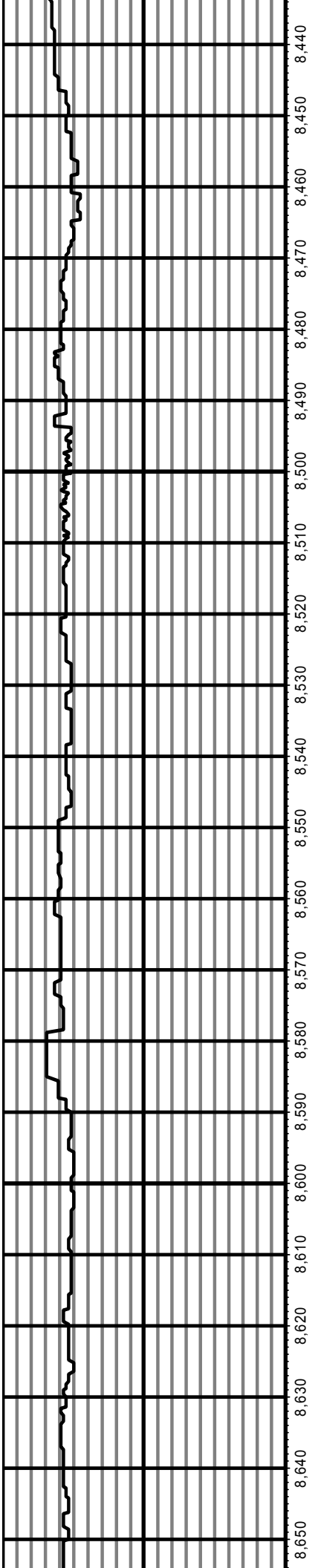


MD: 8277.00 INC: 86.60 AZ: 89.20 8,277.00



MD: 8371.00 INC: 86.20 AZ: 88.50 8,371.00

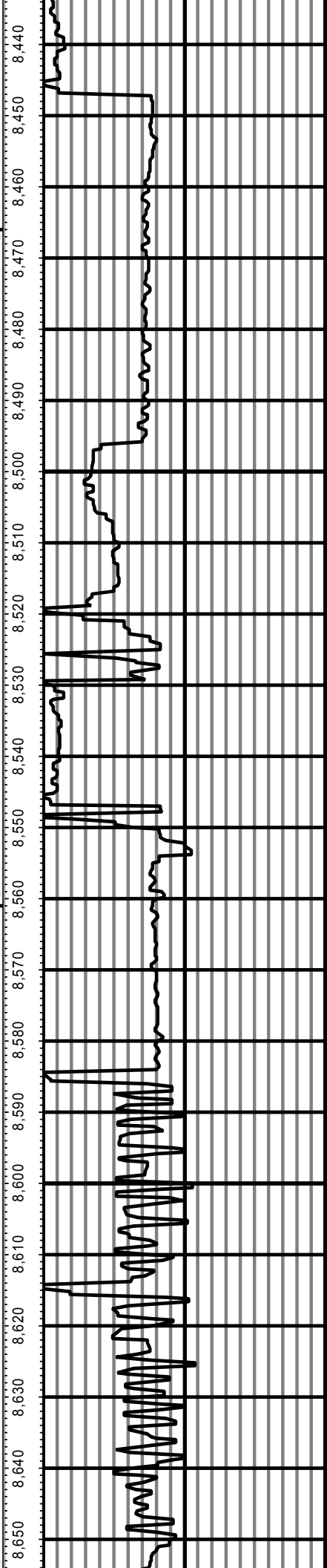


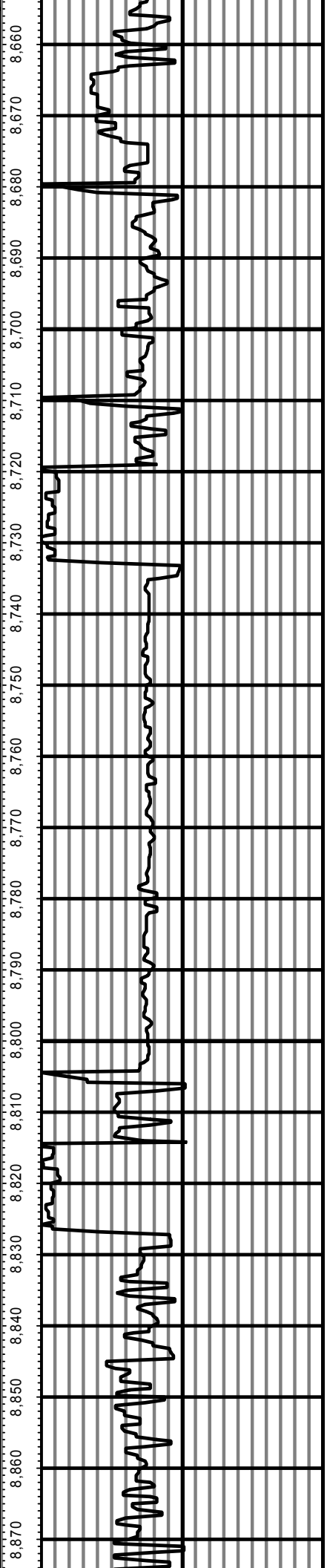
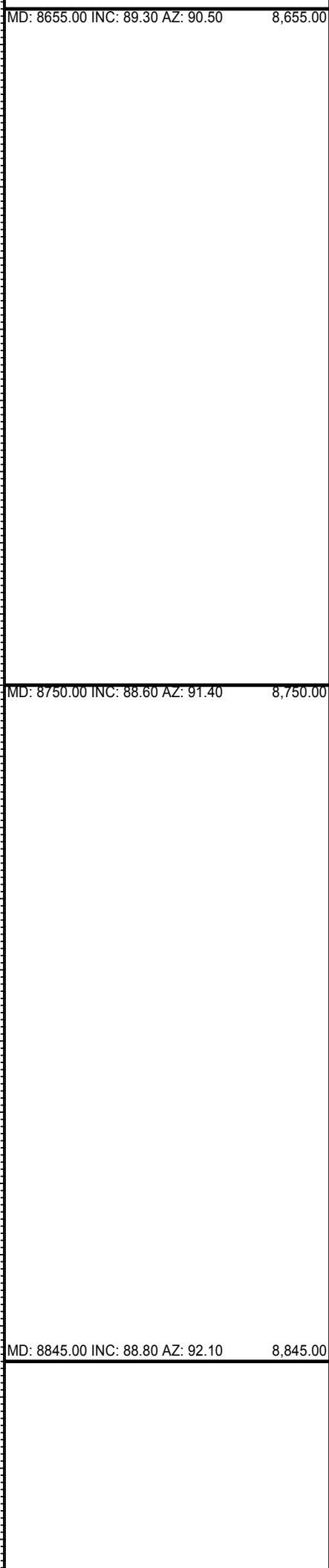
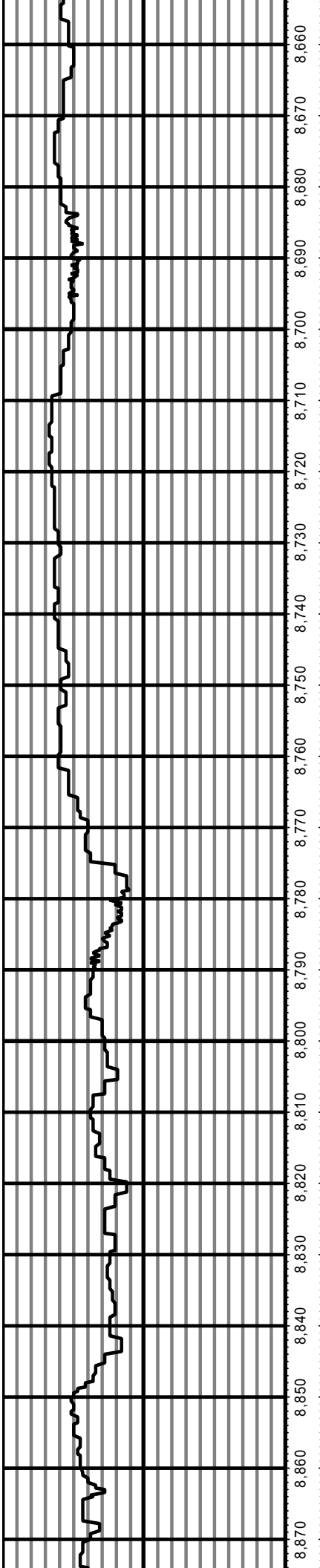


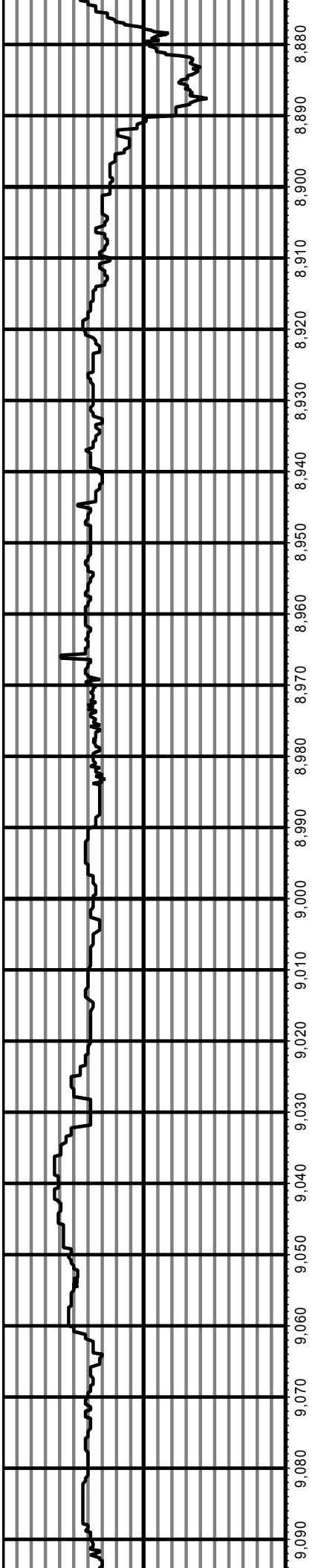
MD: 8466.00 INC: 86.00 AZ: 89.00 8,466.00

MD: 8561.00 INC: 88.10 AZ: 90.10 8,561.00

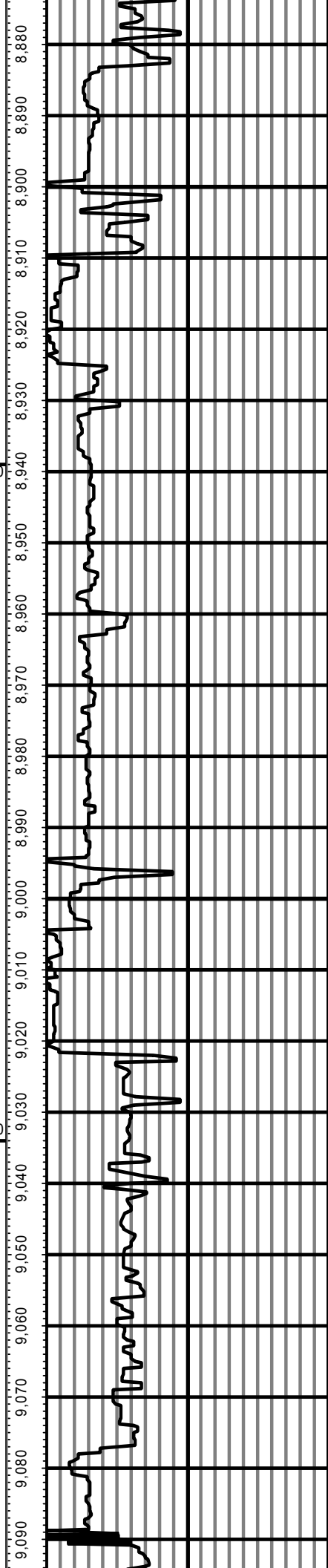
MD: 8655.00 INC: 89.30 AZ: 90.50 8,655.00

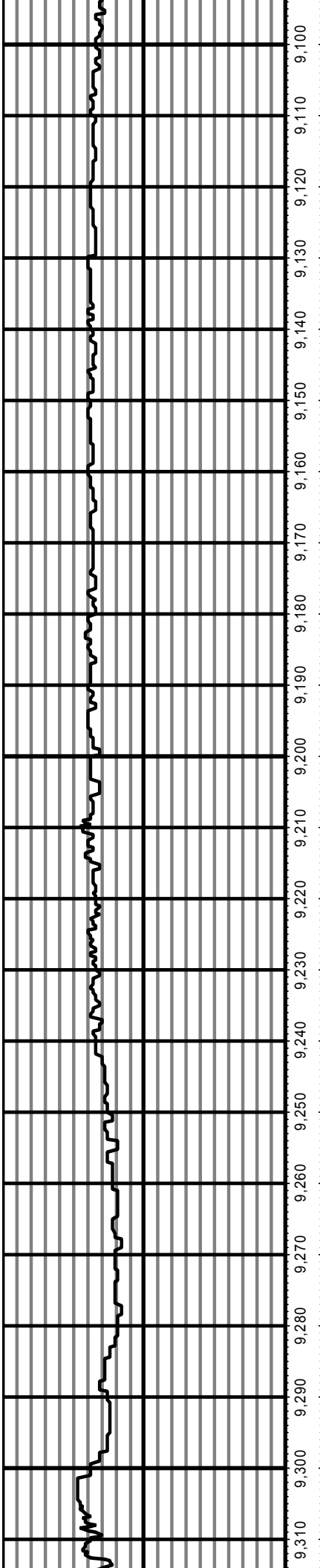






MD: 8939.00 INC: 88.20 AZ: 91.80 8,939.00



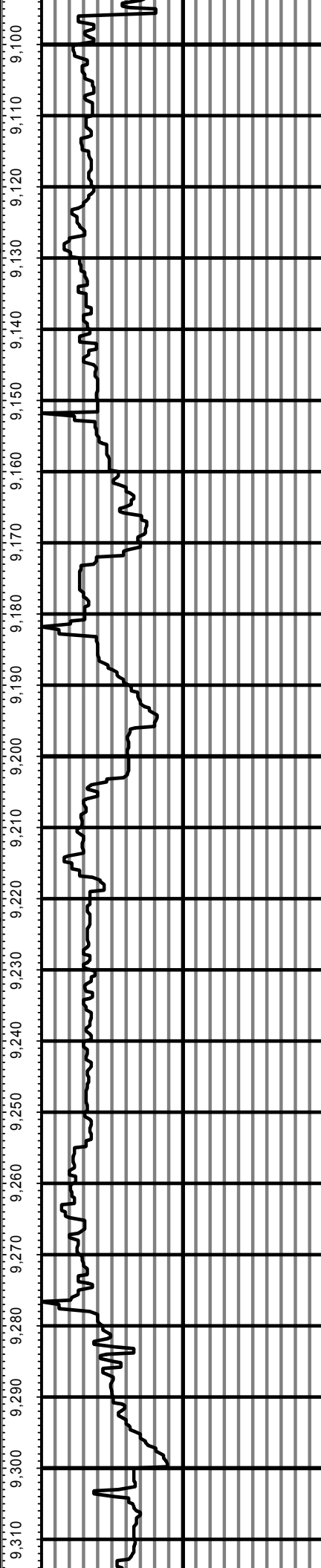


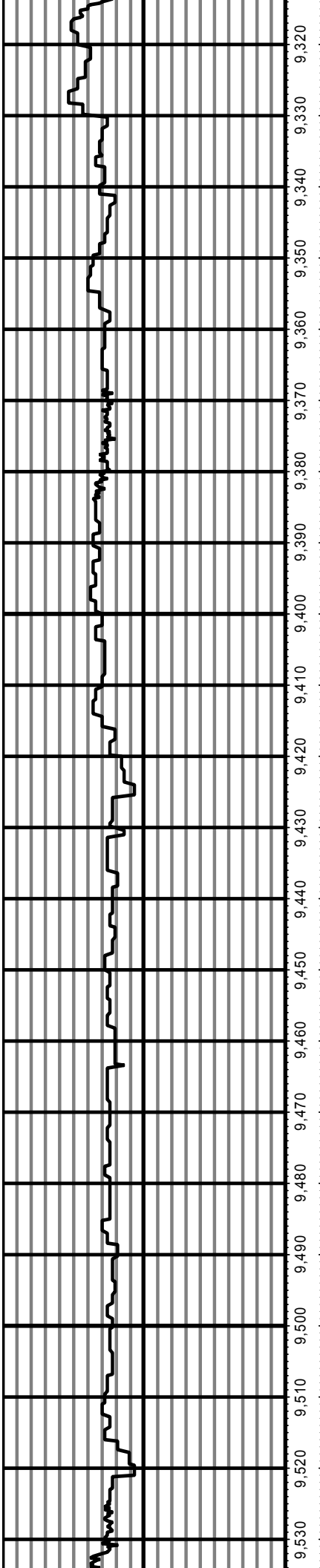
MD: 9129.00 INC: 86.50 AZ: 91.70

9,129.00

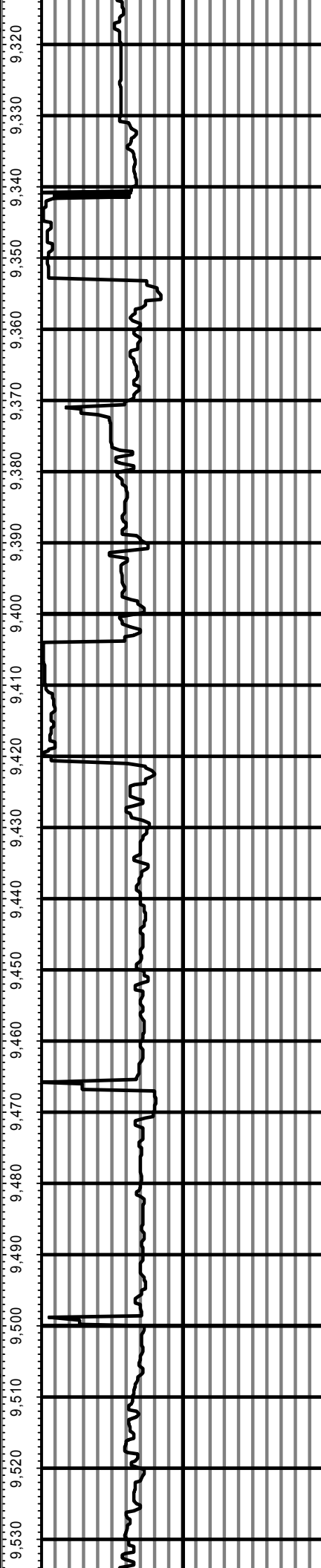
MD: 9223.00 INC: 86.70 AZ: 92.60

9,223.00

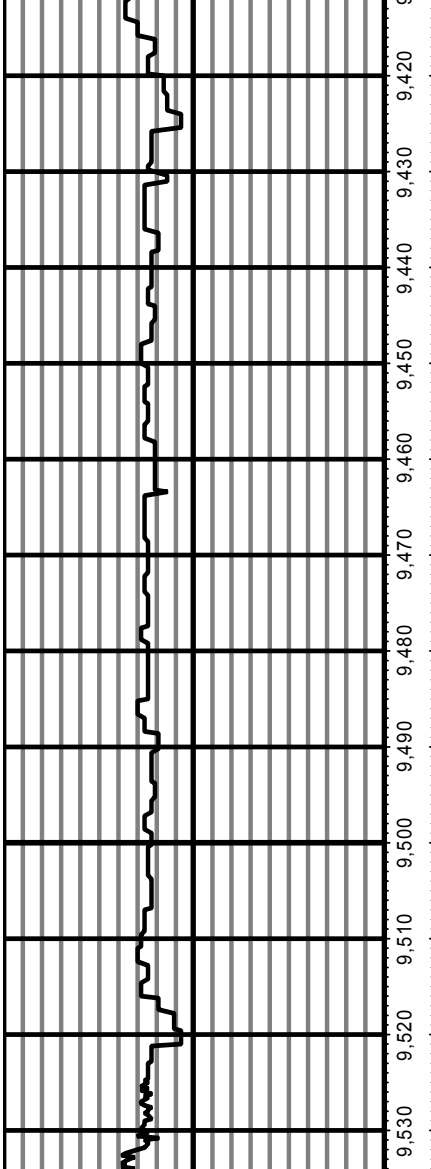




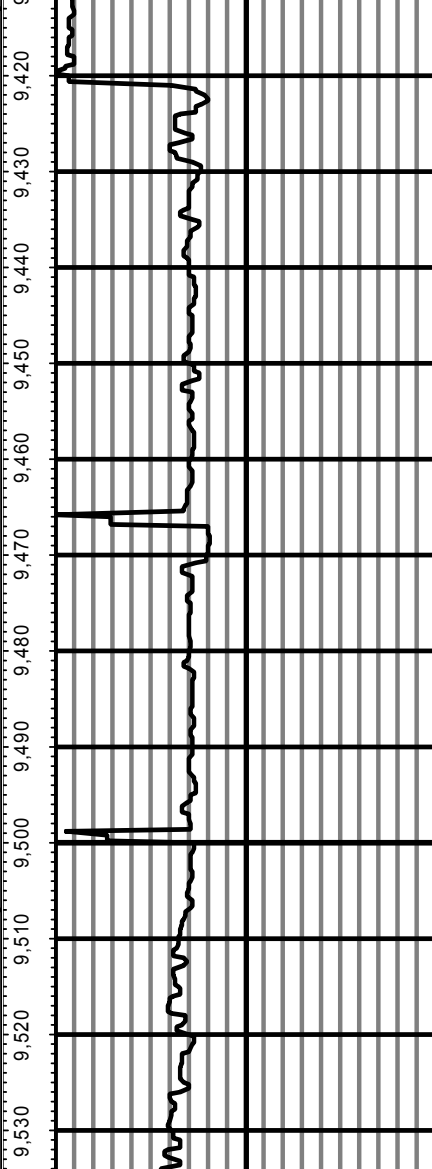
MD: 9318.00 INC: 86.60 AZ: 92.20 9,318.00

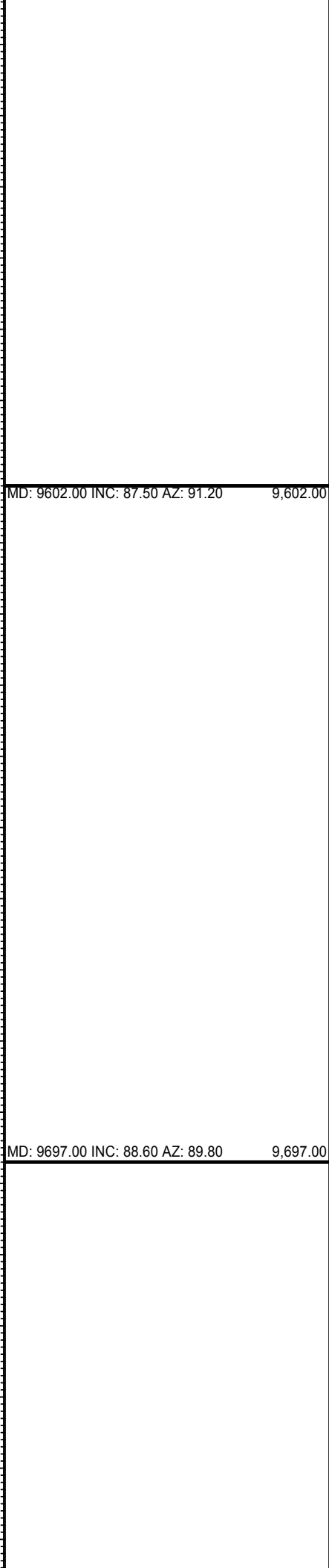
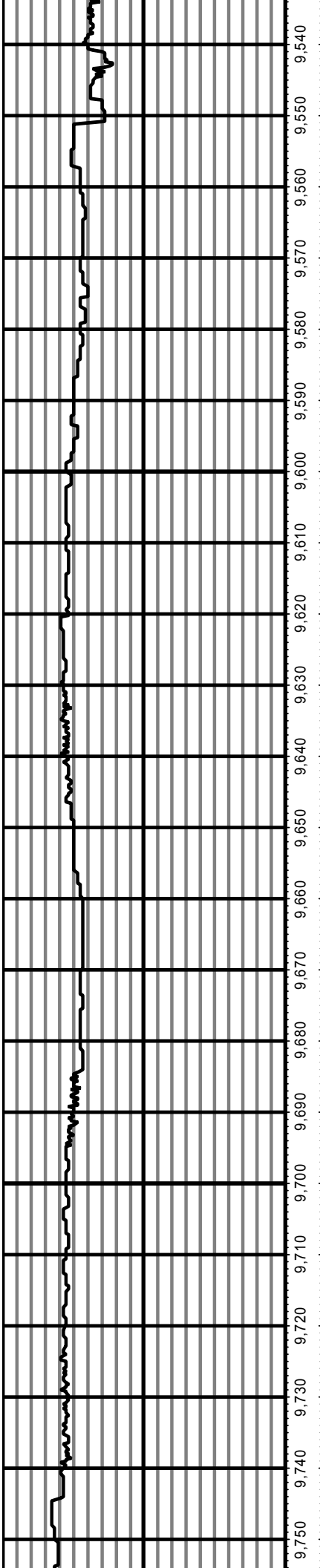


MD: 9413.00 INC: 86.90 AZ: 91.40 9,413.00



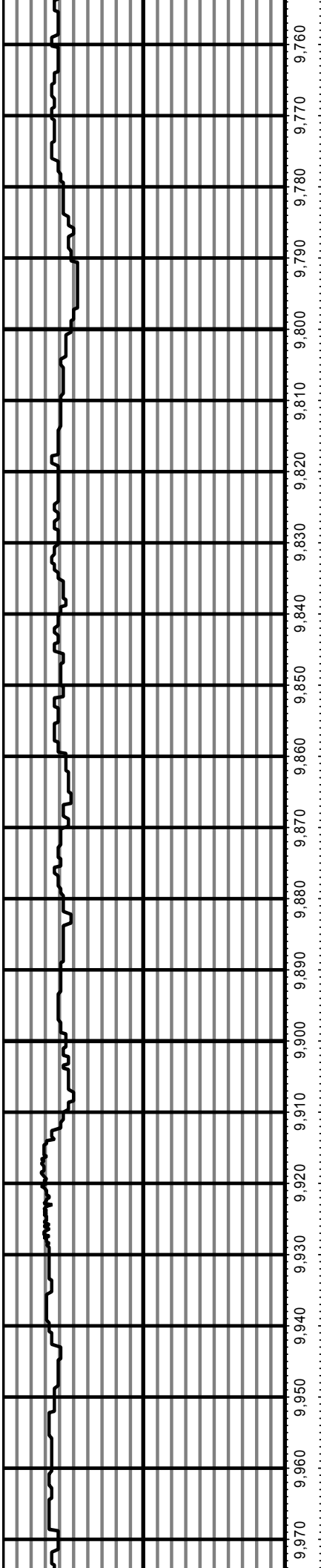
MD: 9507.00 INC: 88.60 AZ: 92.70 9,507.00



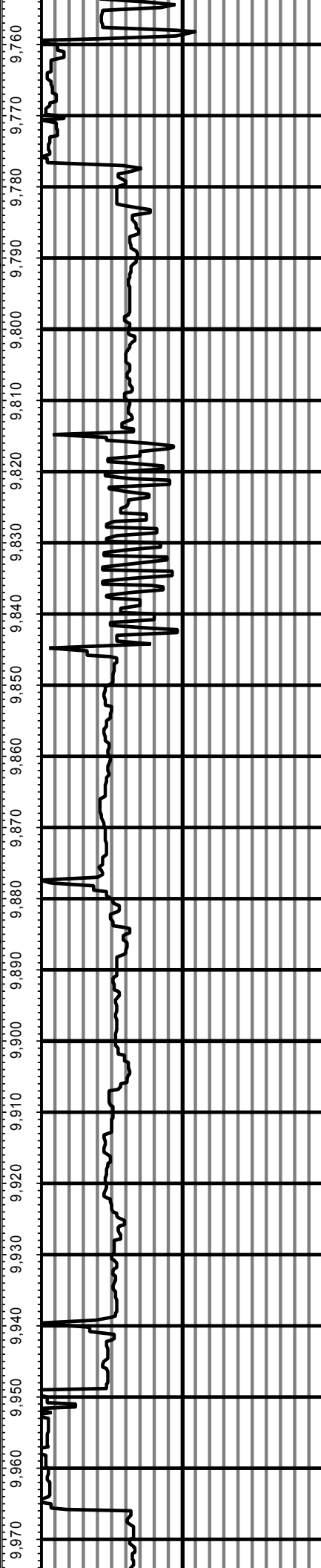


MD: 9602.00 INC: 87.50 AZ: 91.20 9,602.00

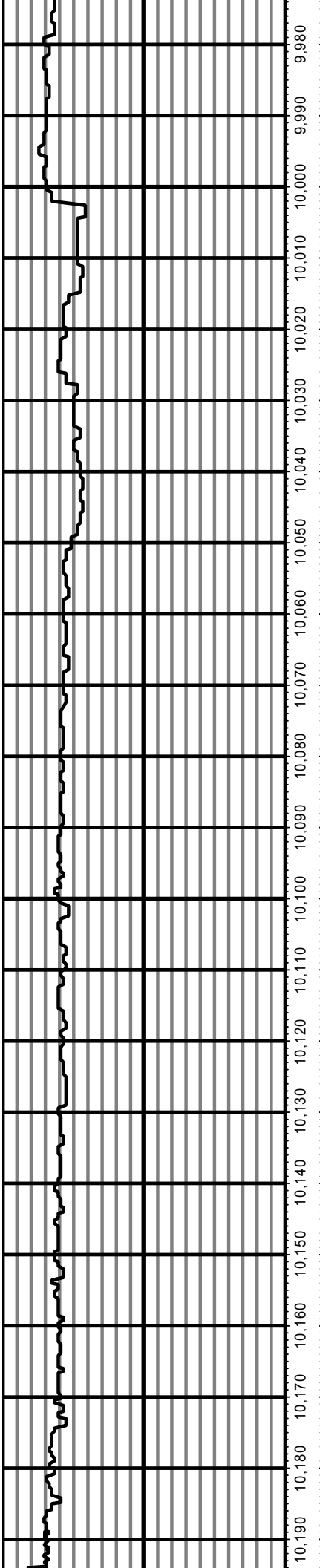
MD: 9697.00 INC: 88.60 AZ: 89.80 9,697.00



MD: 9791.00 INC: 86.00 AZ: 89.50 9,791.00



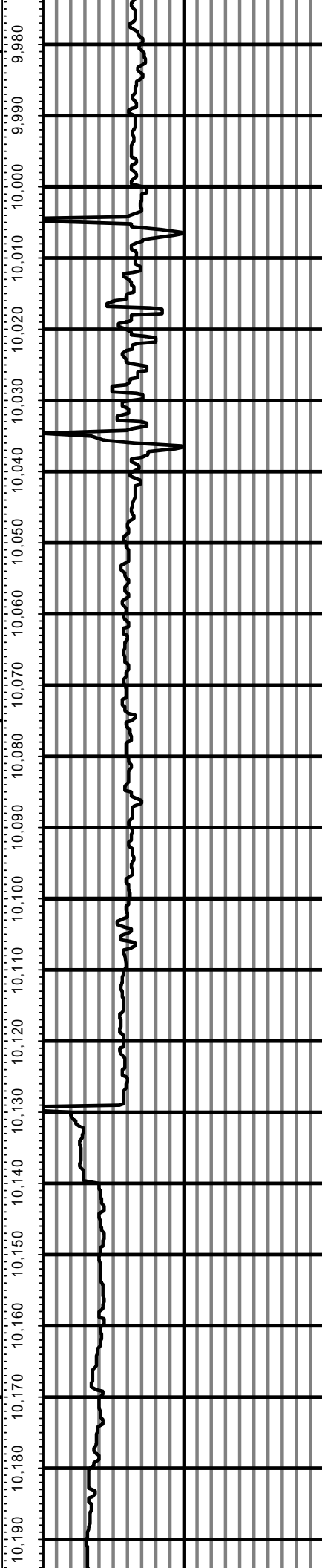
MD: 9886.00 INC: 87.70 AZ: 90.20 9,886.00

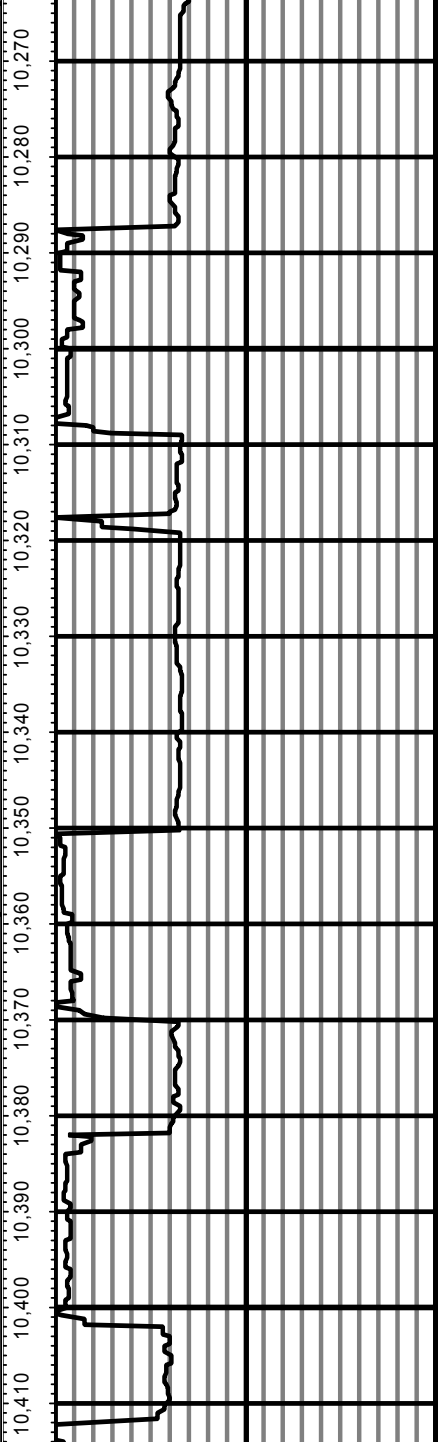
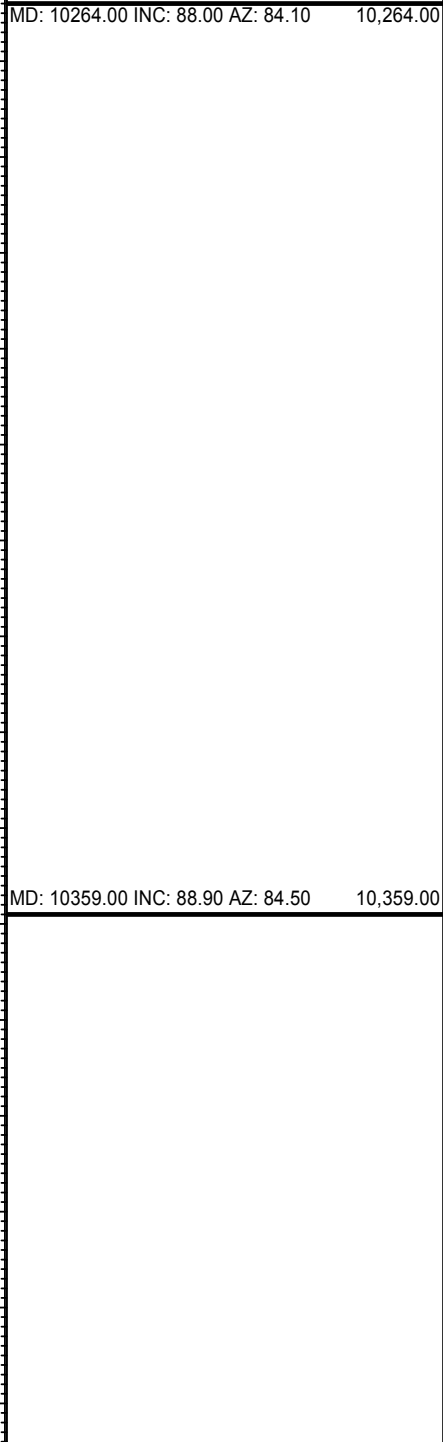
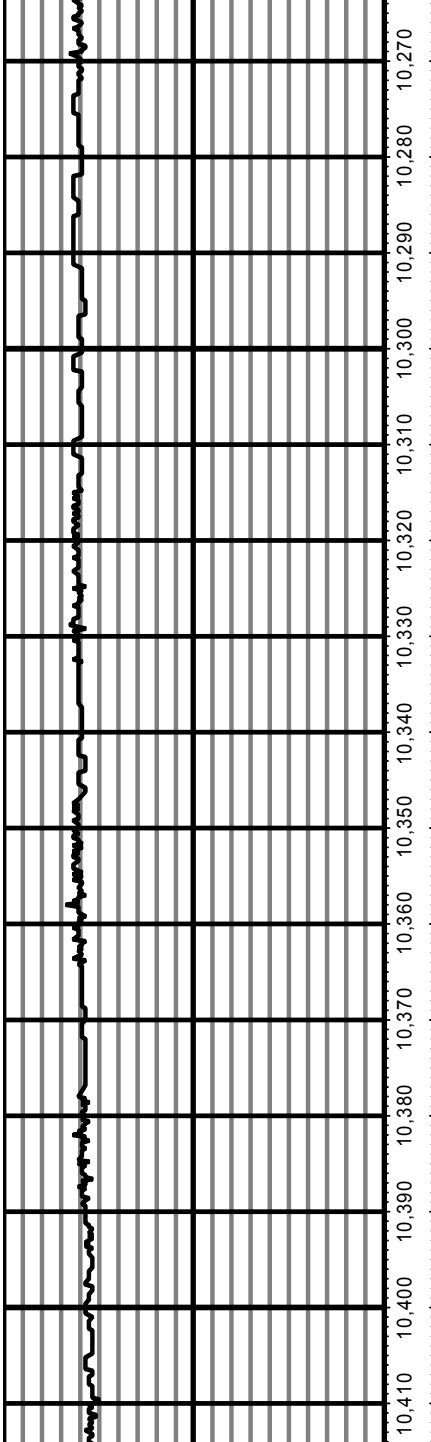
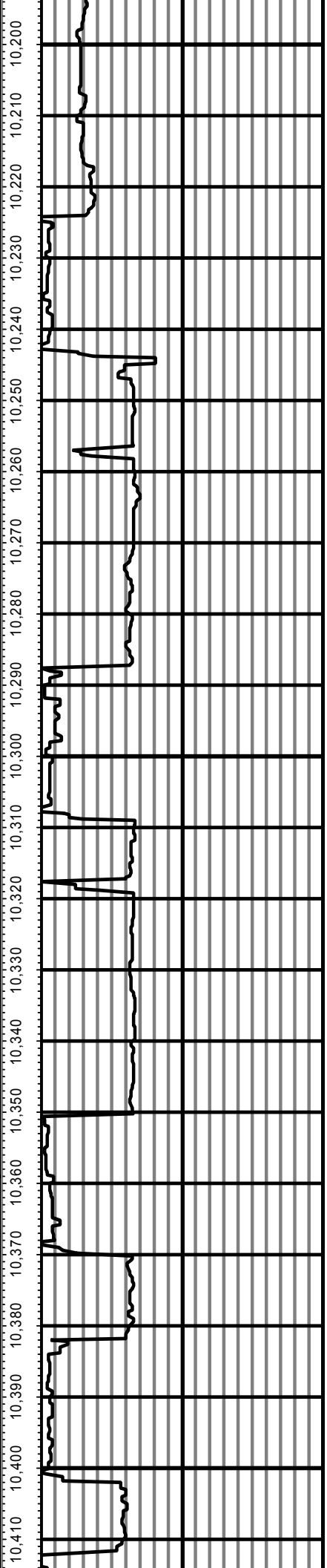
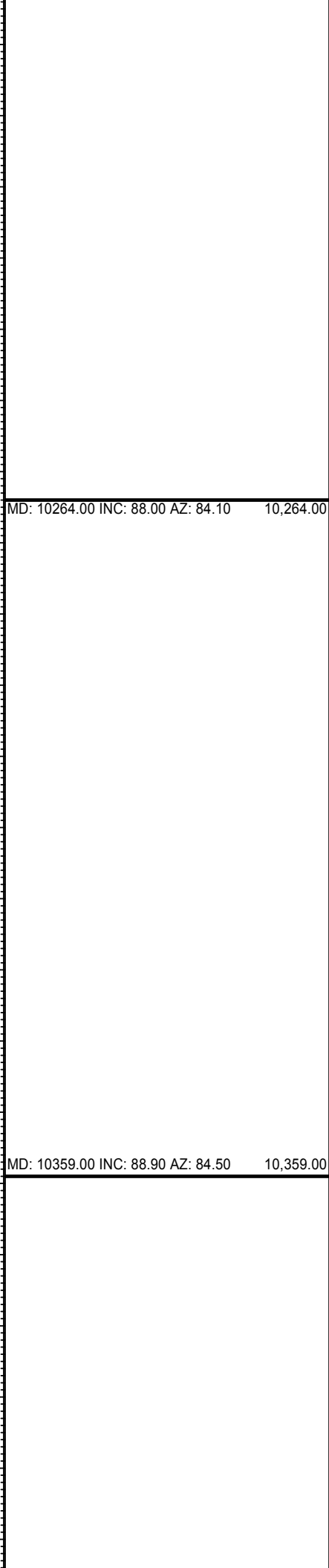
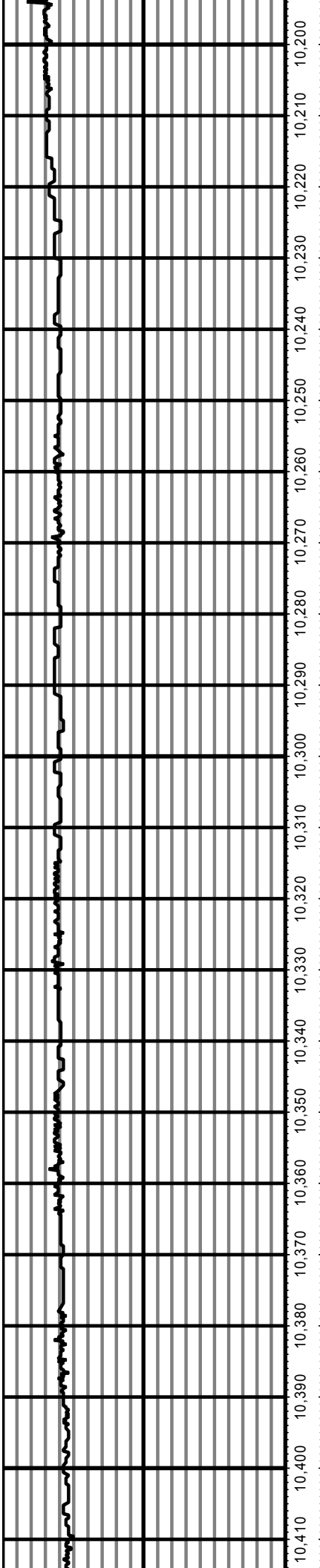


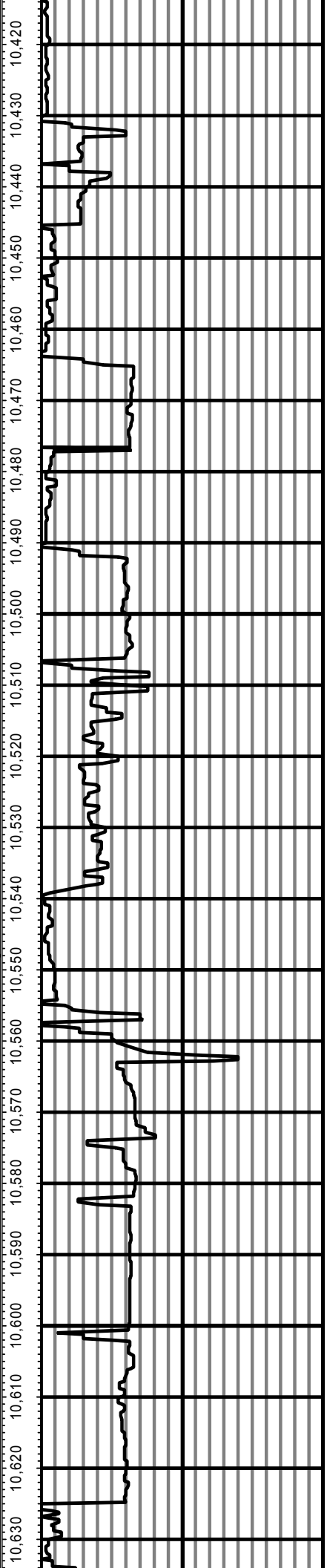
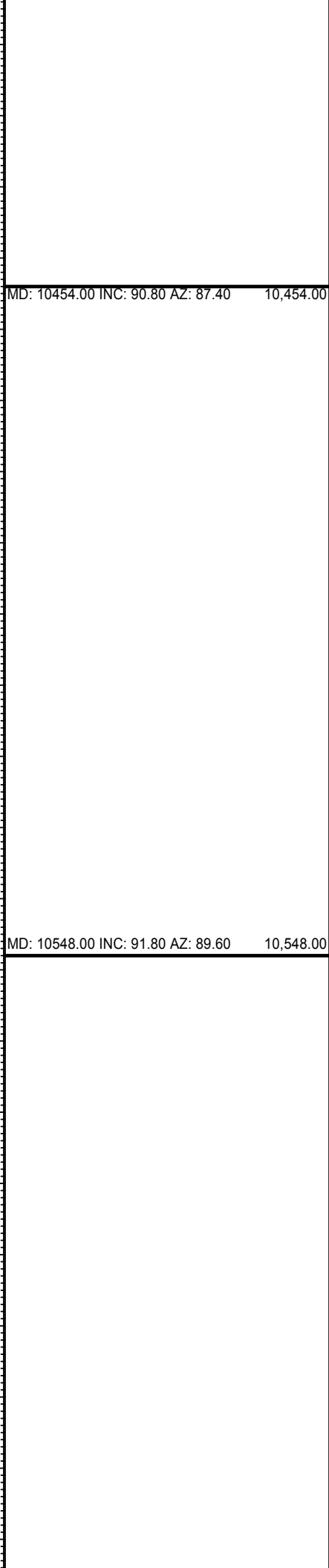
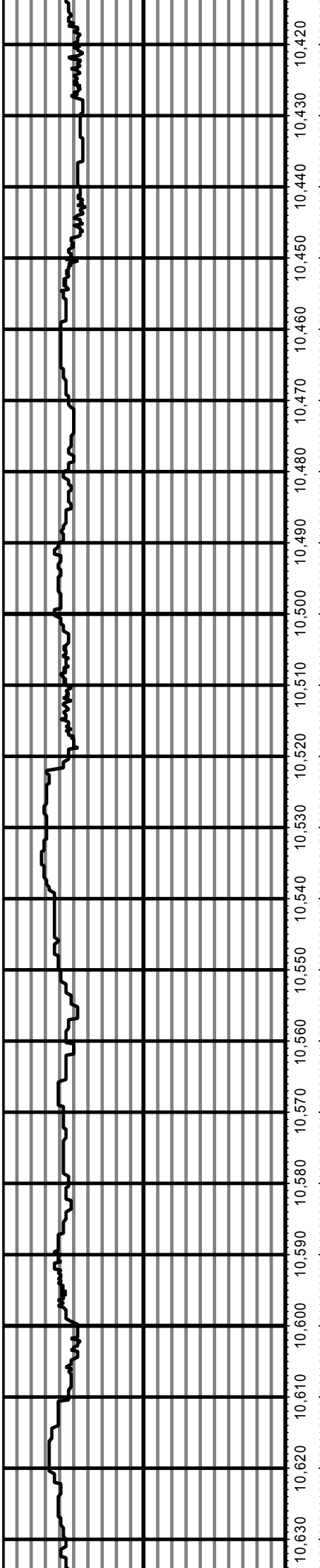
MD: 9981.00 INC: 87.20 AZ: 87.60 9,981.00

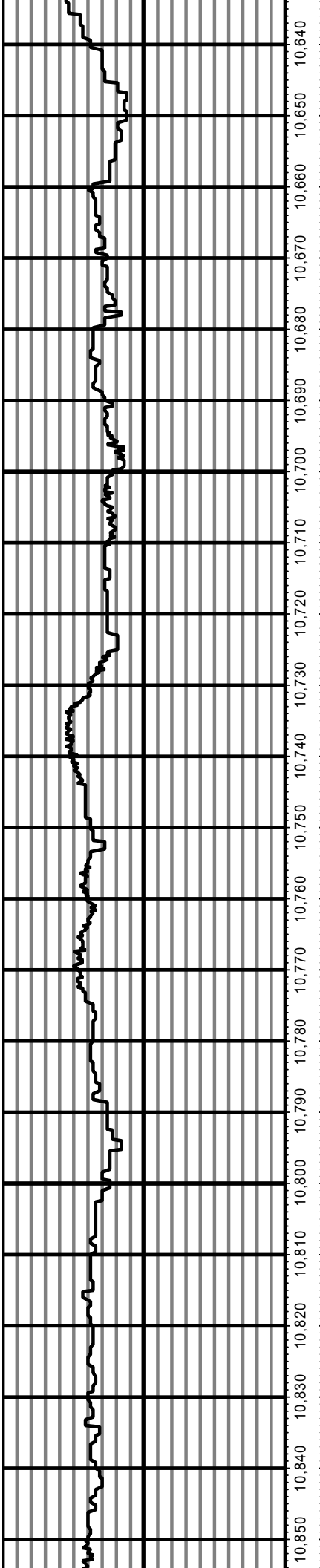
MD: 10075.00 INC: 87.40 AZ: 86.80 10,075.00

MD: 10170.00 INC: 87.00 AZ: 83.80 10,170.00









MD: 10643.00 INC: 92.60 AZ: 91.10

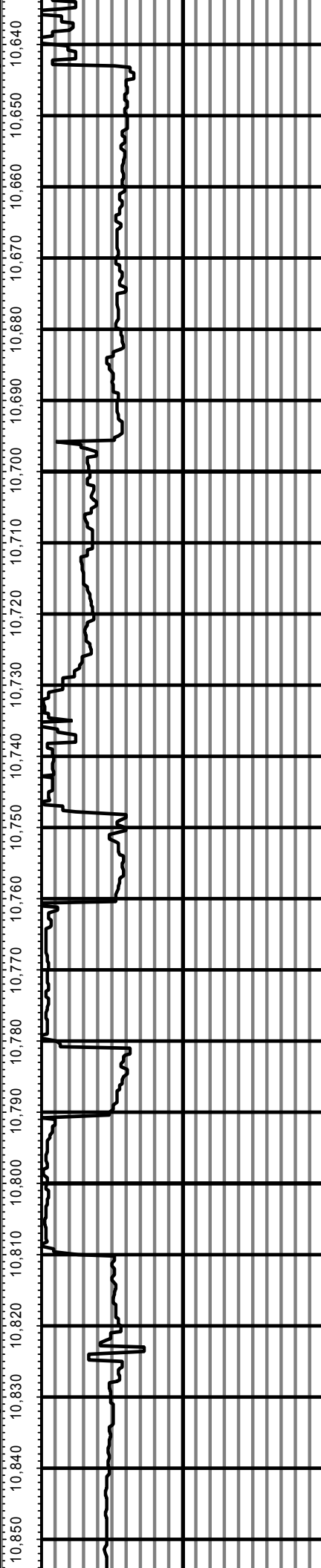
10,643.00

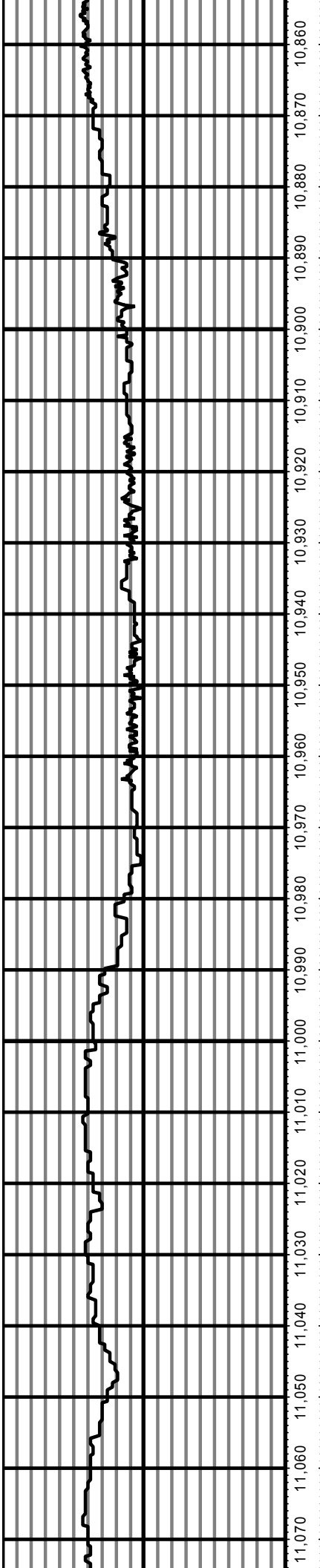
MD: 10737.00 INC: 93.30 AZ: 91.10

10,737.00

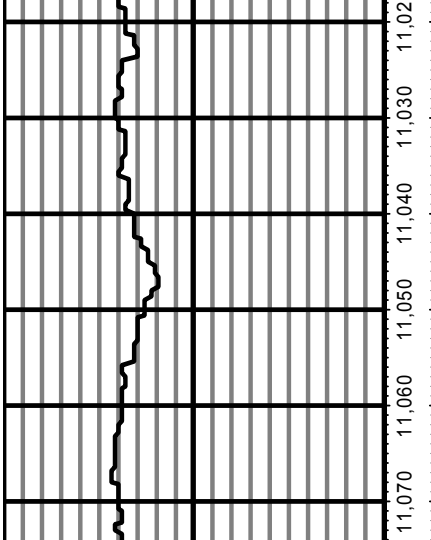
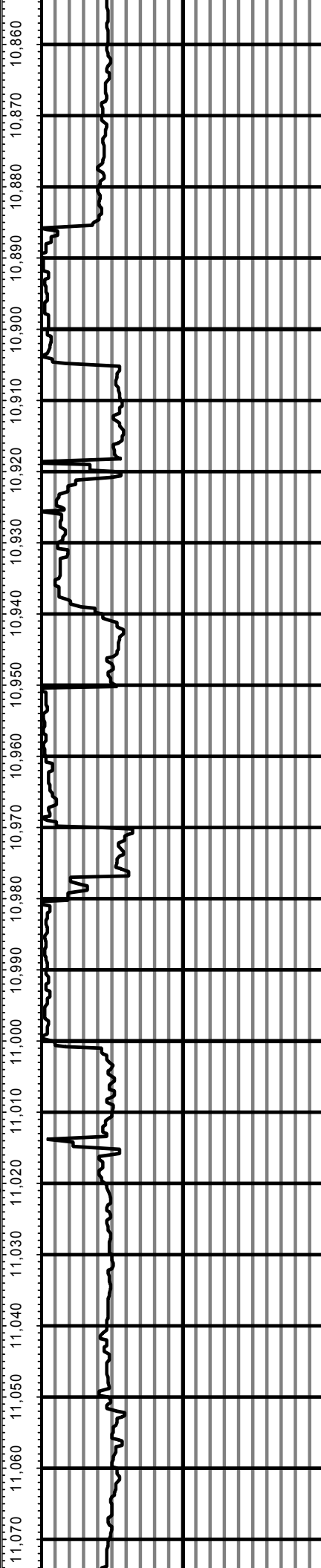
MD: 10832.00 INC: 90.40 AZ: 91.50

10,832.00

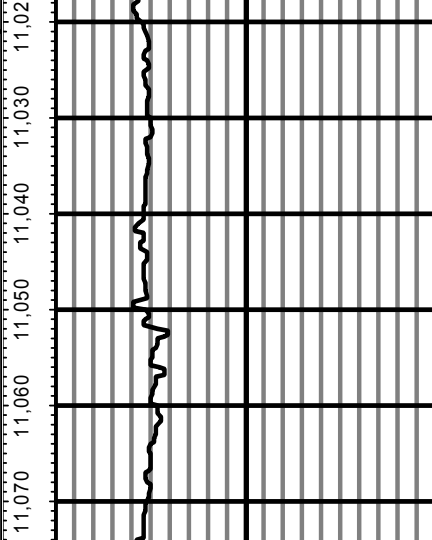


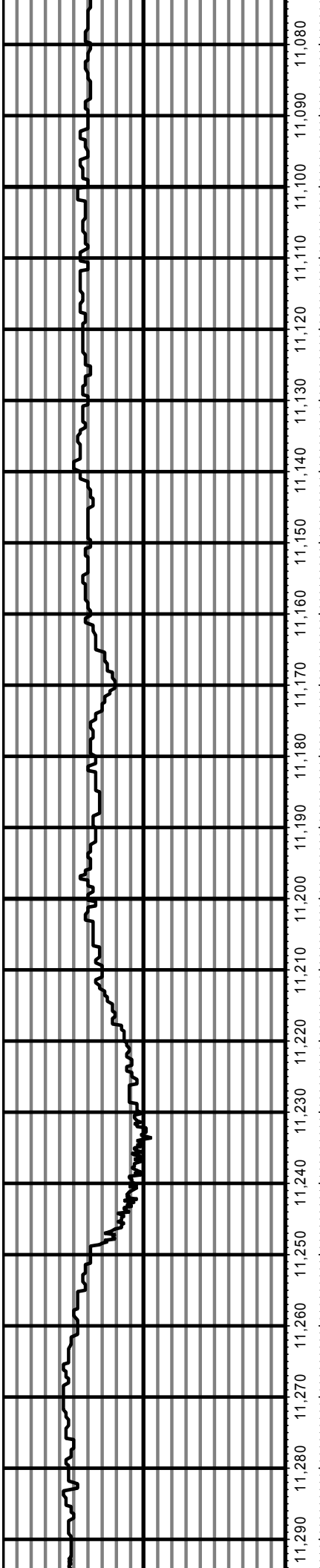


MD: 10927.00 INC: 90.40 AZ: 92.10 10,927.00

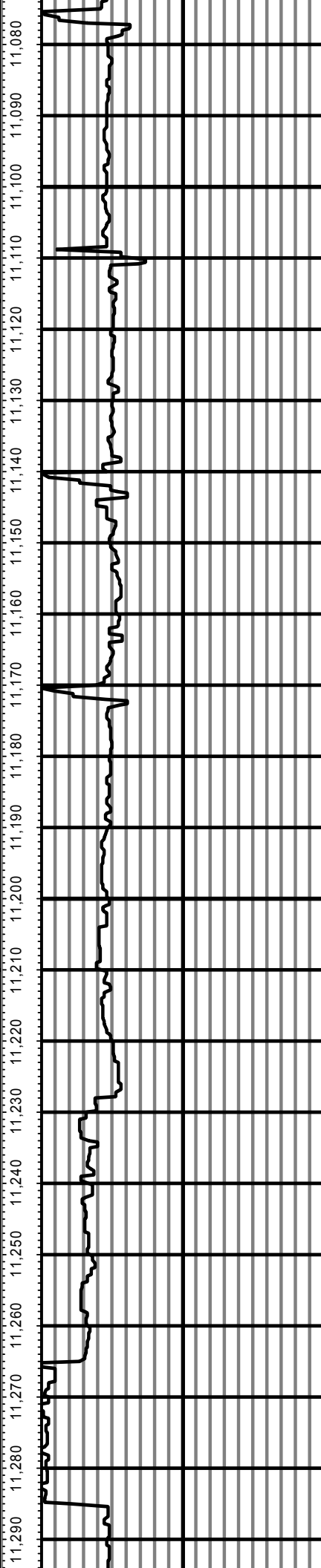


MD: 11021.00 INC: 86.90 AZ: 92.30 11,021.00





MD: 11116.00 INC: 88.50 AZ: 93.50 11,116.00



MD: 11210.00 INC: 90.70 AZ: 94.50 11,210.00

