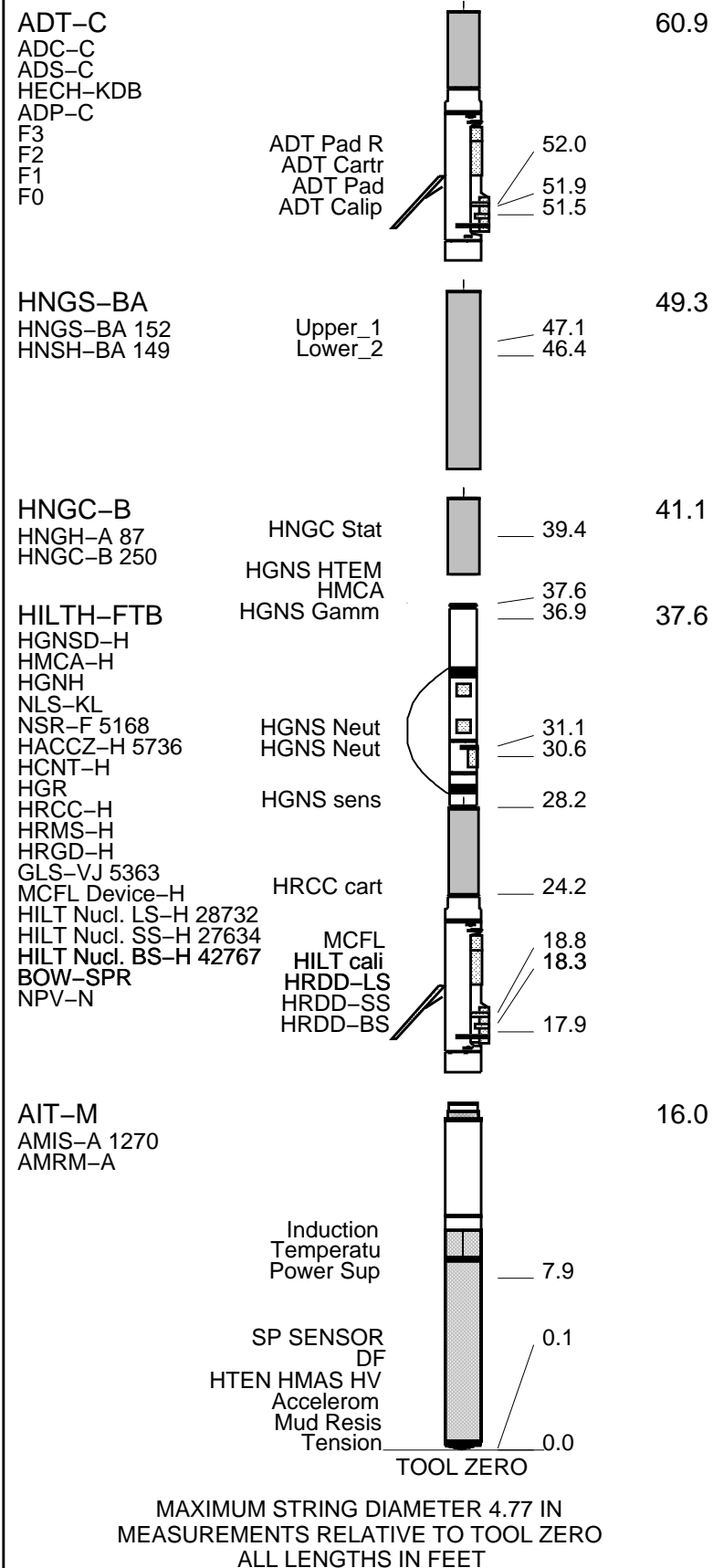


DISCLAIMER

THE USE OF AND RELIANCE UPON THIS RECORDED-DATA BY THE HEREIN NAMED COMPANY (AND ANY OF ITS AFFILIATES, PARTNERS, REPRESENTATIVES, AGENTS, CONSULTANTS AND EMPLOYEES) IS SUBJECT TO THE TERMS AND CONDITIONS AGREED UPON BETWEEN SCHLUMBERGER AND THE COMPANY, INCLUDING: (a) RESTRICTIONS ON USE OF THE RECORDED-DATA; (b) DISCLAIMERS AND WAIVERS OF WARRANTIES AND REPRESENTATIONS REGARDING COMPANY'S USE OF AND RELIANCE UPON THE RECORDED-DATA; AND (c) CUSTOMER'S FULL AND SOLE RESPONSIBILITY FOR ANY INFERENCE DRAWN OR DECISION MADE IN CONNECTION WITH THE USE OF THIS RECORDED-DATA.

REMARKS: RUN NUMBER 1	REMARKS: RUN NUMBER 2
1) This is the first run in well.	
2) Toolstring run as per toolsketch.	
3) Computed on a limestone (2.71 g/cc) matrix.	
4) AIT affected by high chlorides content of mud.	
Schlumberger Crew: Jake Jump, Matt Rocha and Derrick Hunter	
Rig: Ensign 136	

EQUIPMENT DESCRIPTION	
RUN 1	RUN 2

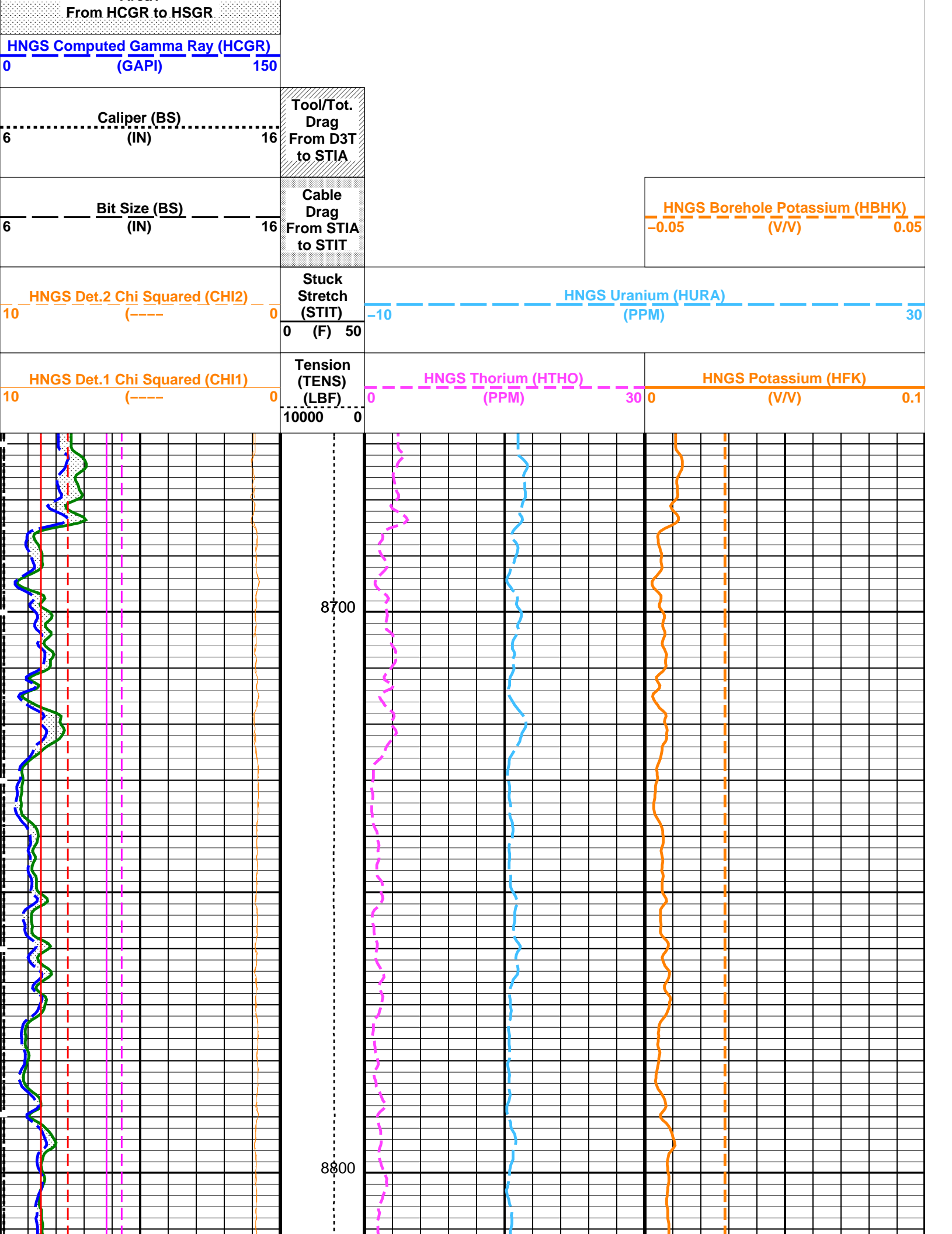


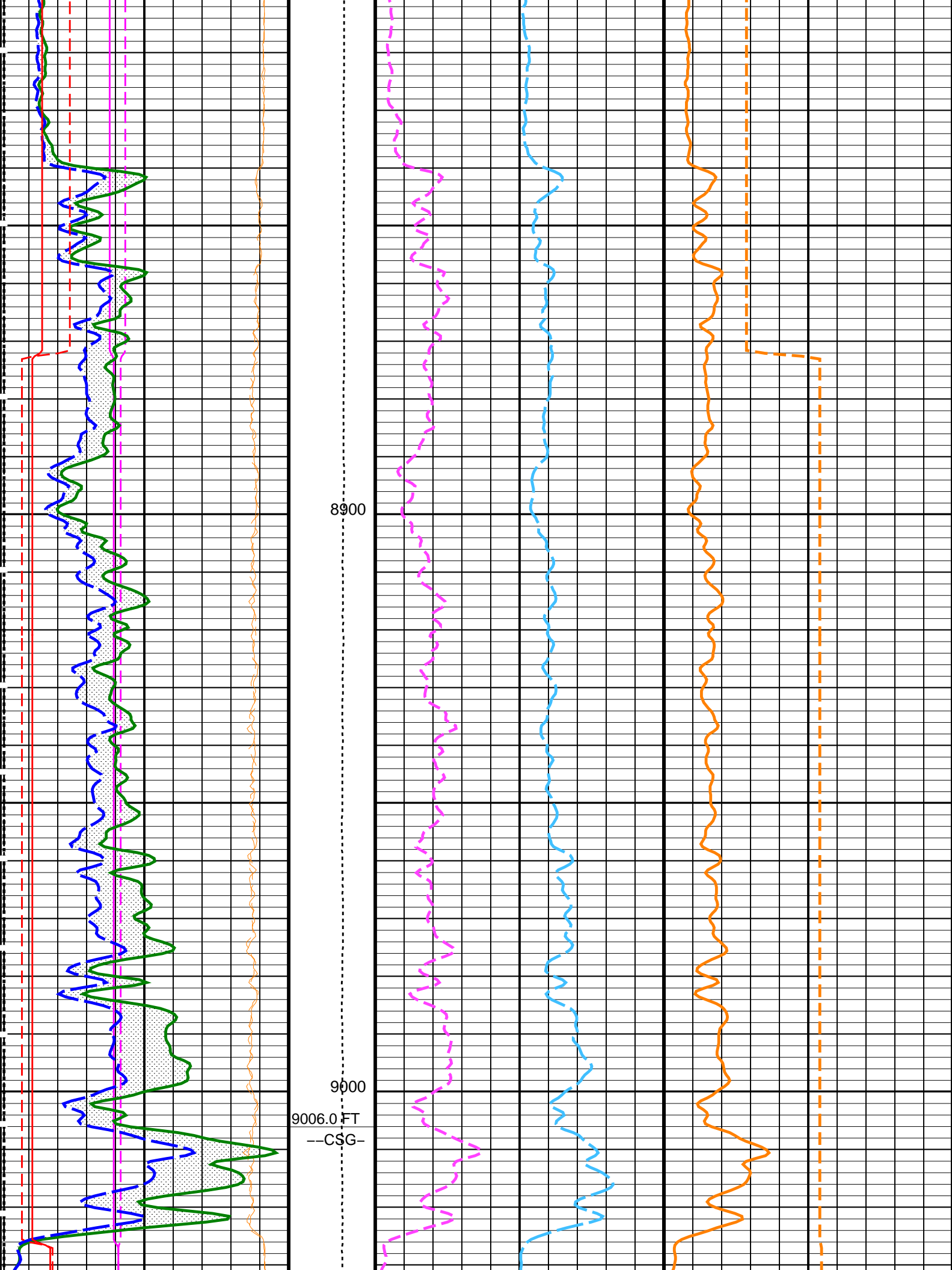
Input DLIS Files						
DEFAULT	AIT_TLD_MCFL_CNL_006LUP	FN:5	PRODUCER	17-Jul-2012 14:15	10387.5 FT	8660.0 FT
Output DLIS Files						
DEFAULT	AIT_TLD_MCFL_CNL_020PUP	FN:18	PRODUCER	17-Jul-2012 17:29	10395.0 FT	8668.0 FT

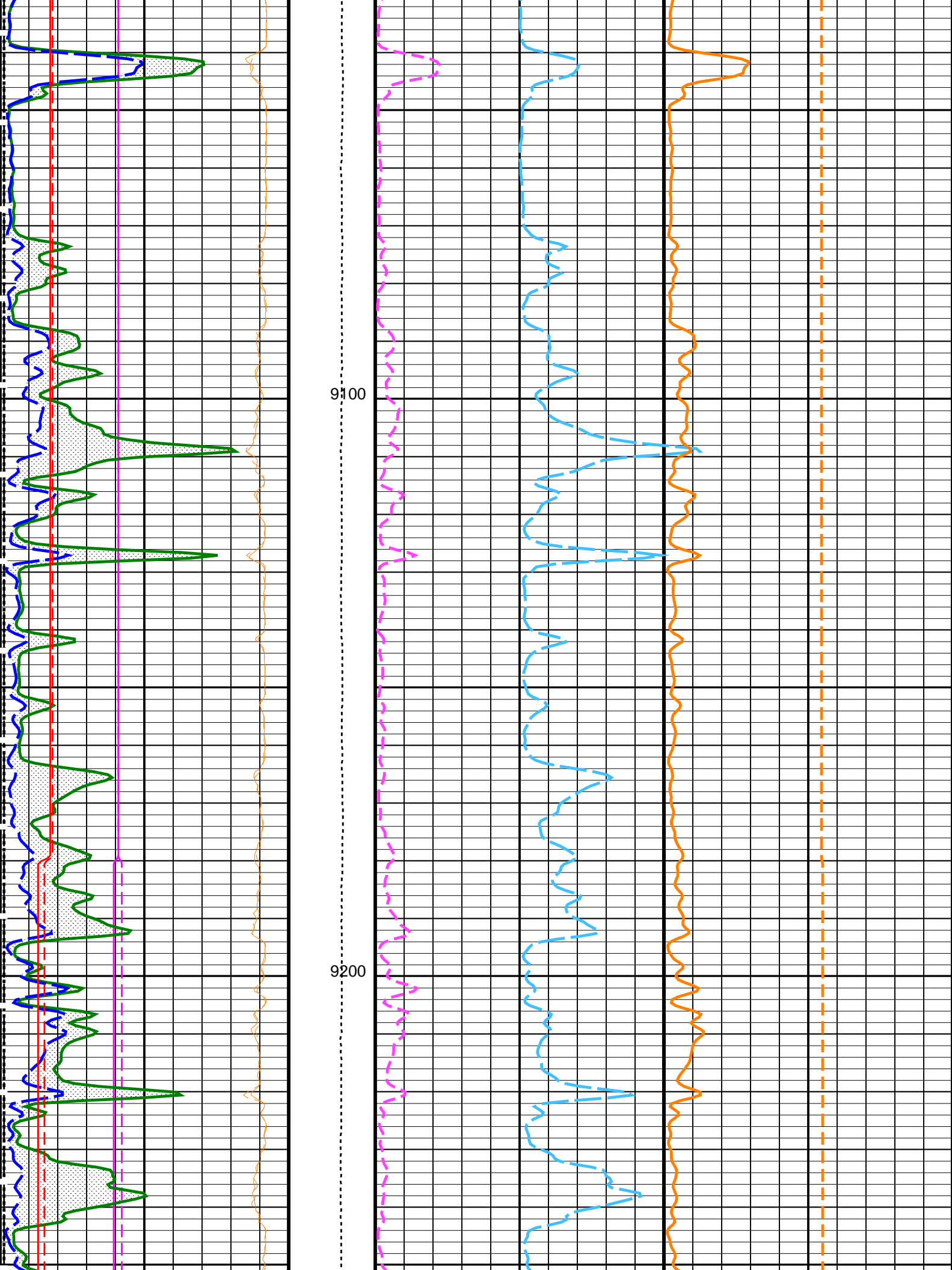
OP System Version: 19C1-222						
AIT-M	19C1-222		HILTH-FTB	19C1-222		
HNGC-B	19C1-222		HNGS-BA	19C1-222		
ADT-C	SRPC-5195-ADT-C_k		DTC-H	19C1-222		

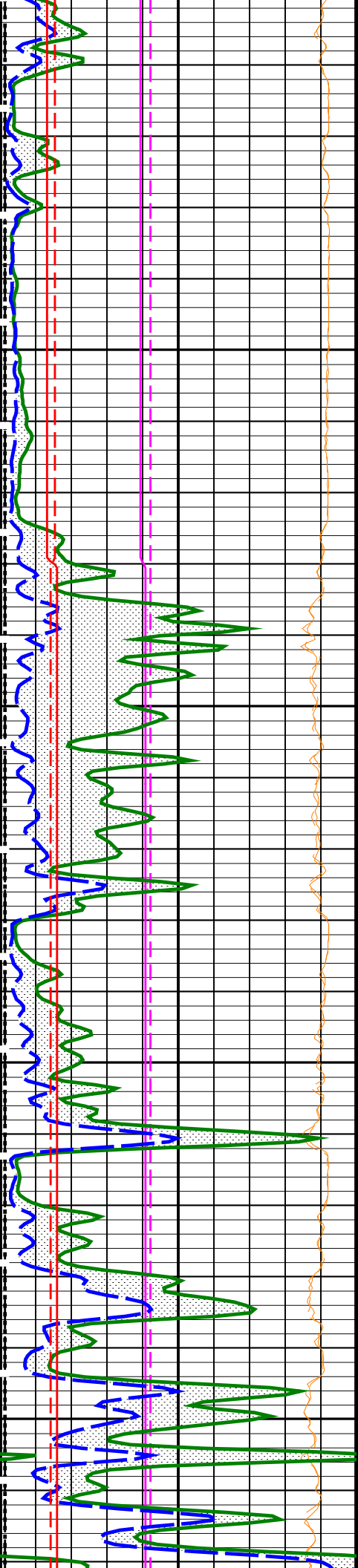
PIP SUMMARY

Time Mark Every 60 S		
HNGS Spectroscopy Gamma Ray (HSGR)		
0	(GAPI)	150
HNGS Det.2 Resolution Degradation Factor (RDF2)		
0	(----	10
HNGS Det.1 Resolution Degradation Factor (RDF1)		
0	(----	10
HNGS Det.2 Gain Correction Factor (GCF2)		
0.9	(----	1.1
HNGS Det.1 Gain Correction Factor (GCF1)		
0.9	(----	1.1
Area1		



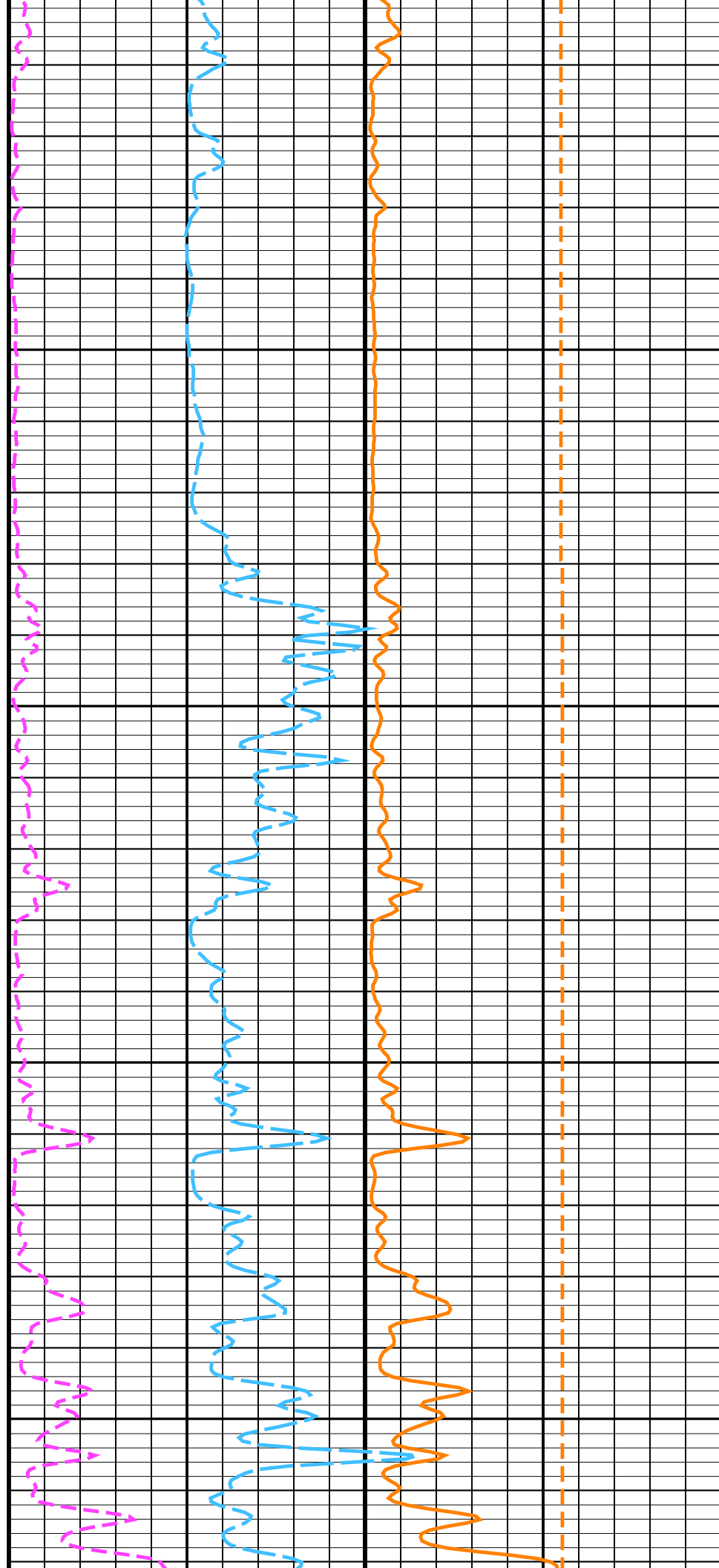


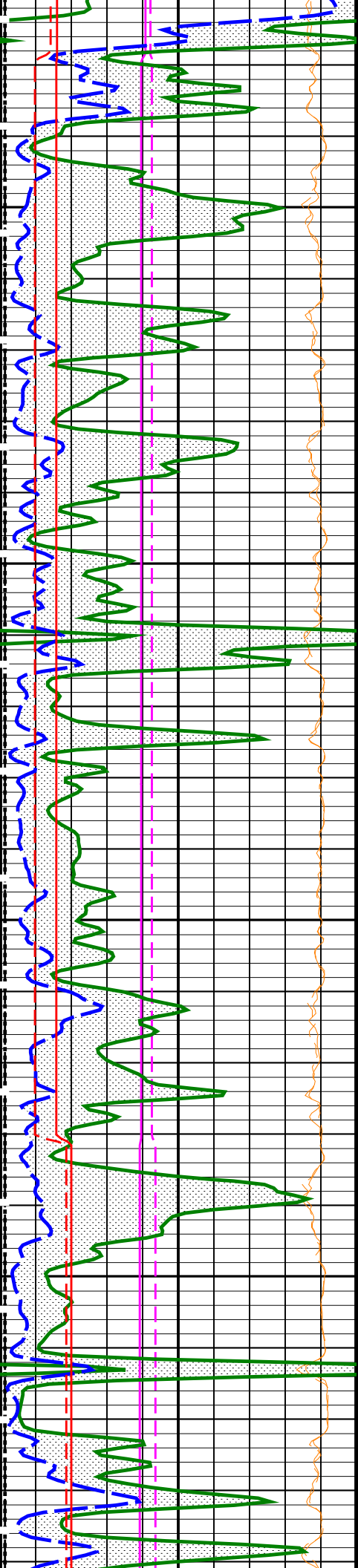




9300

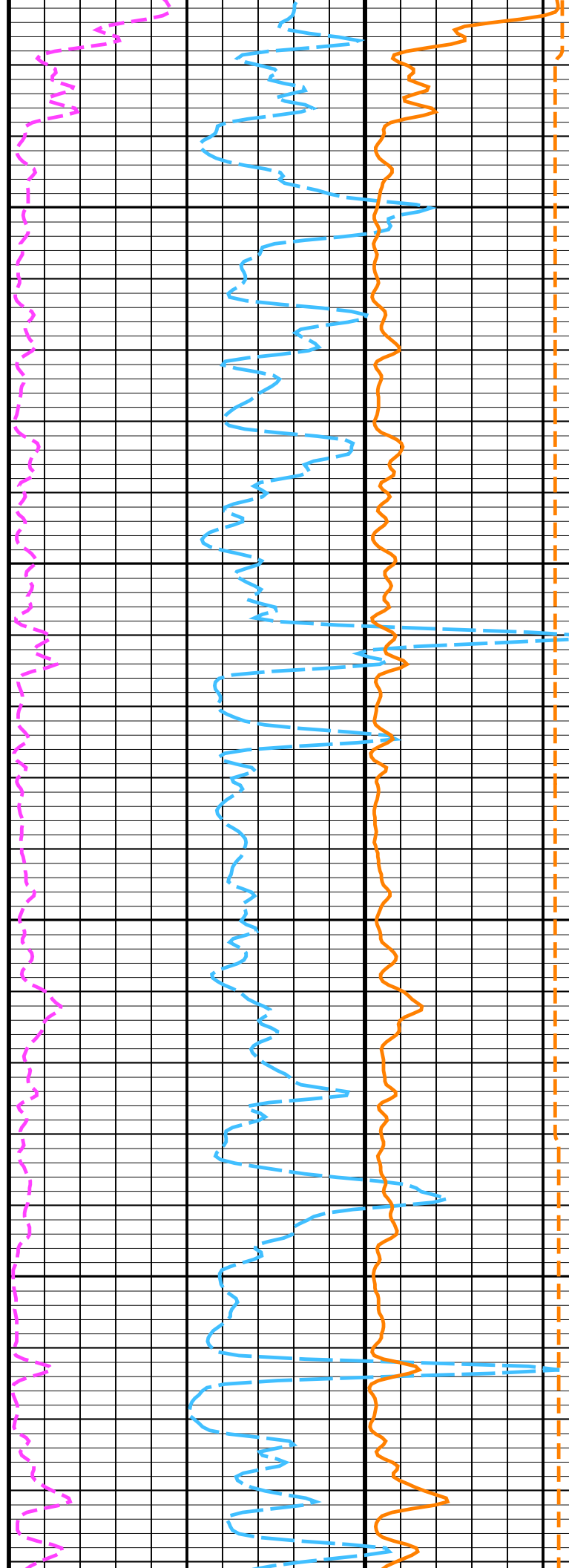
9400

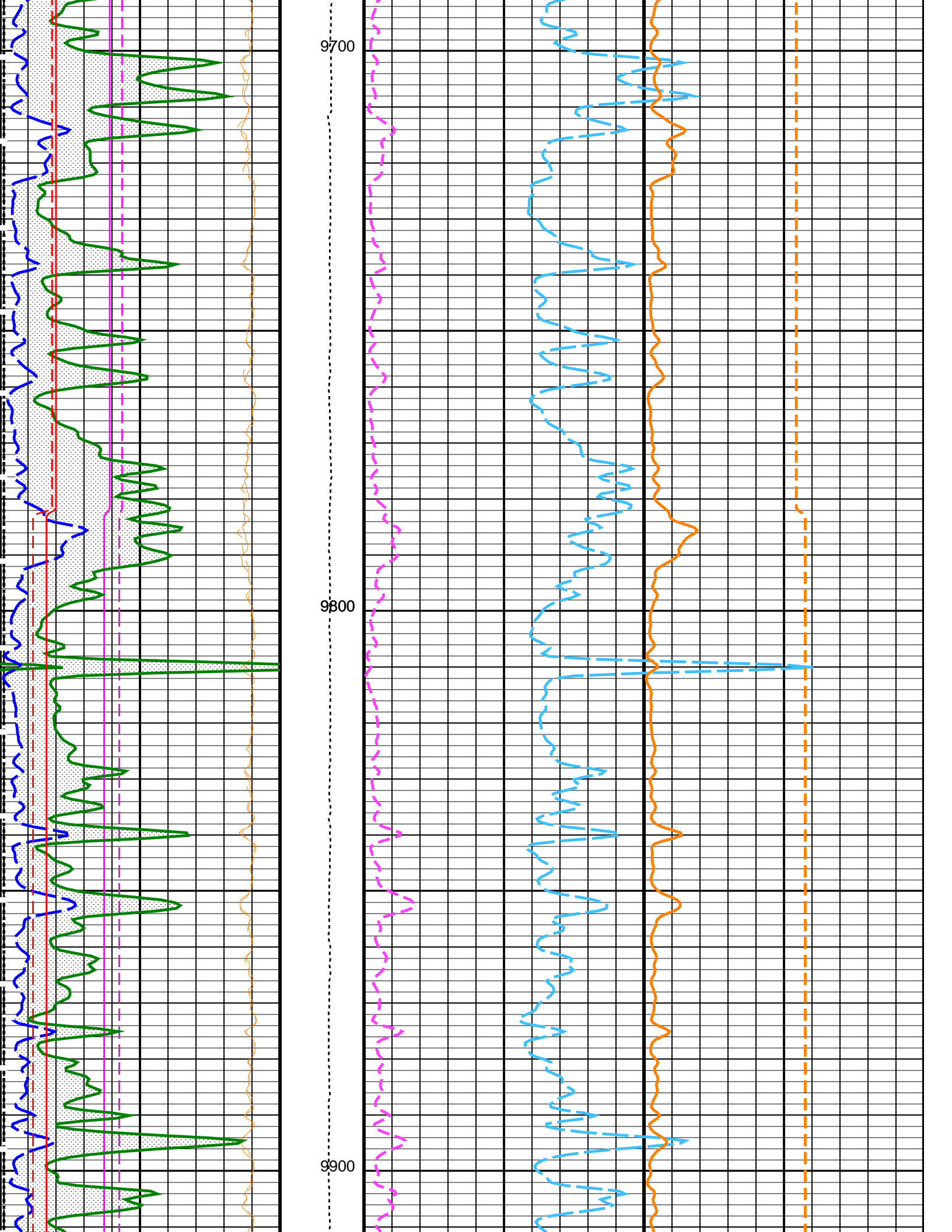


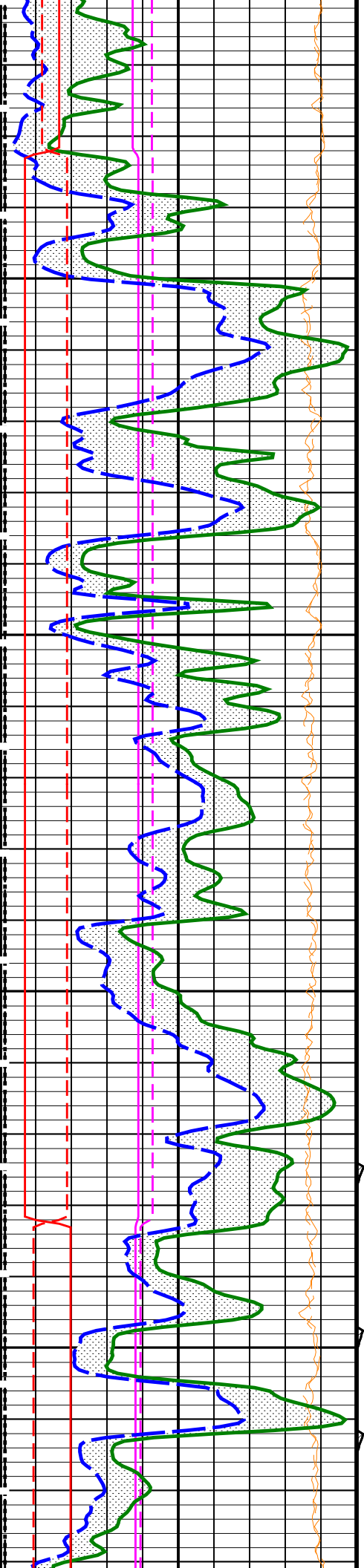


9500

9600

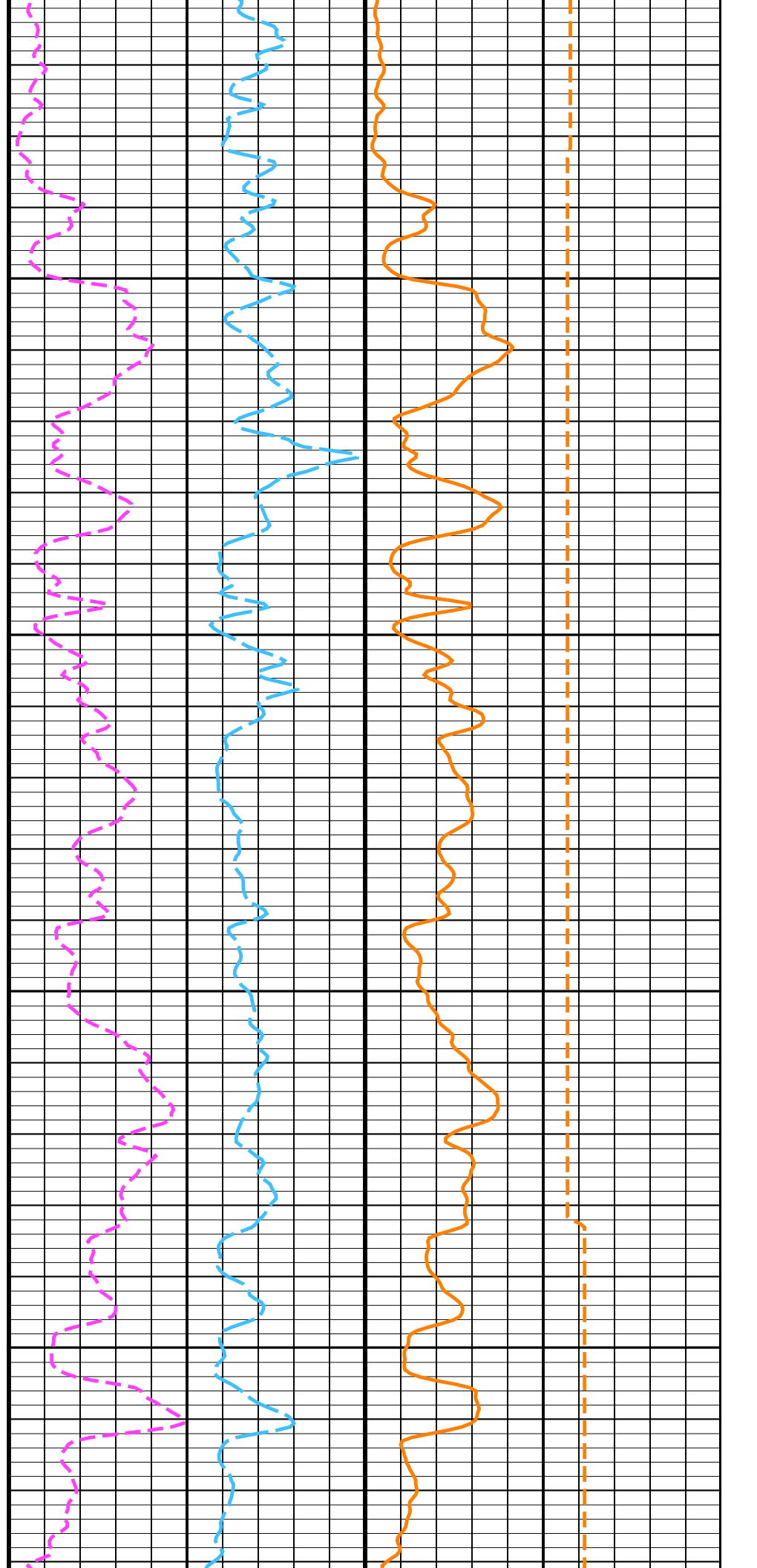


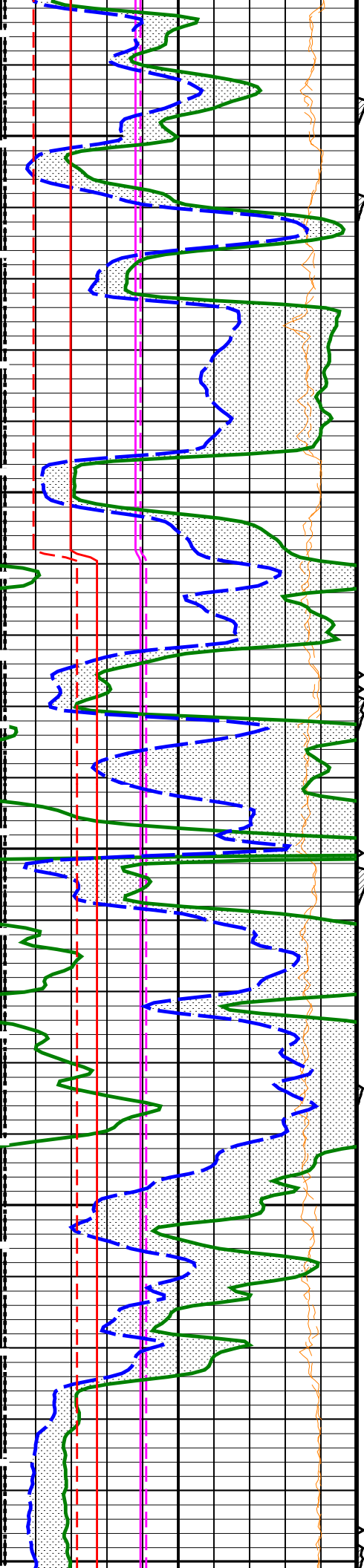




10000

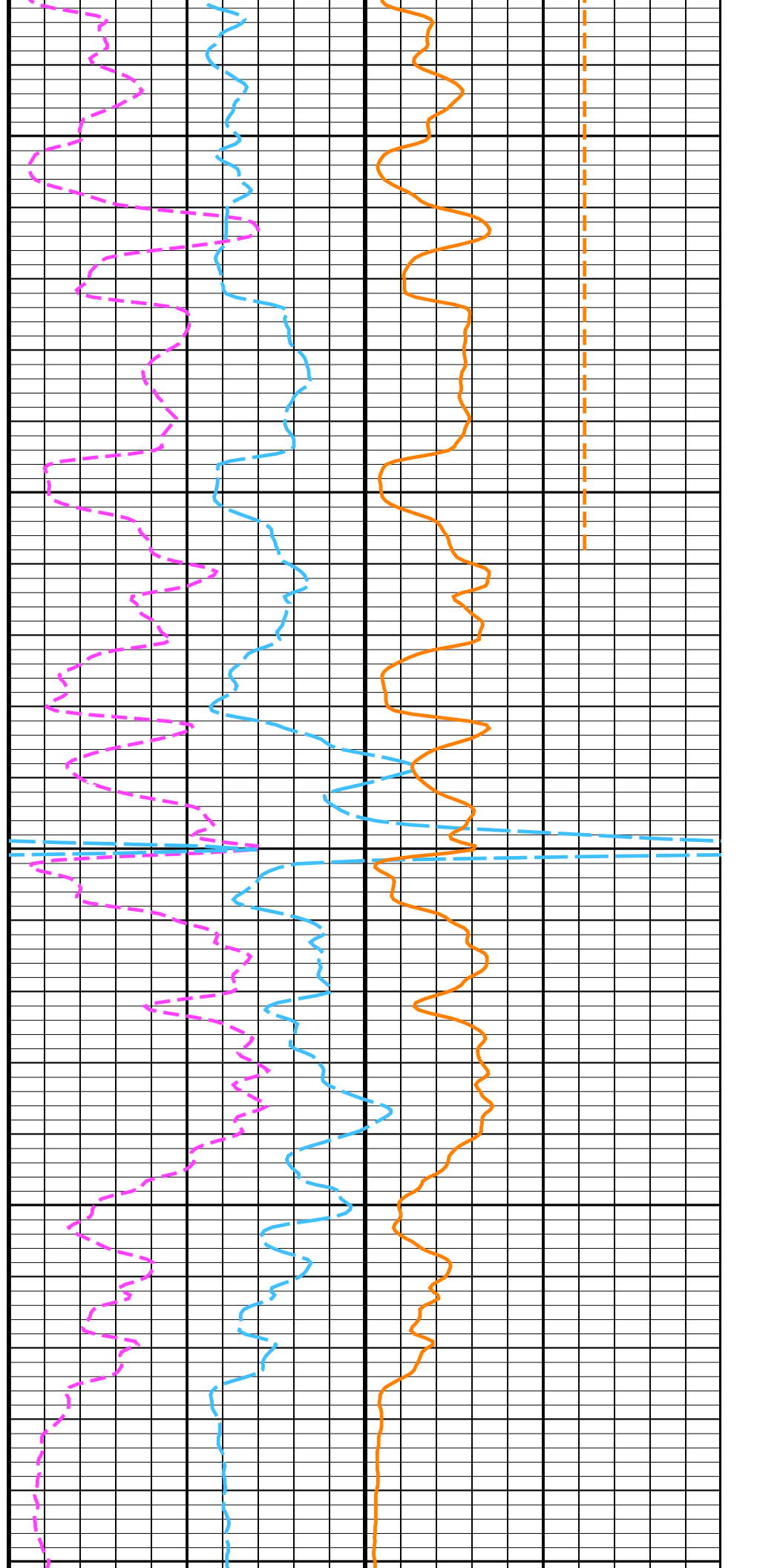
10100

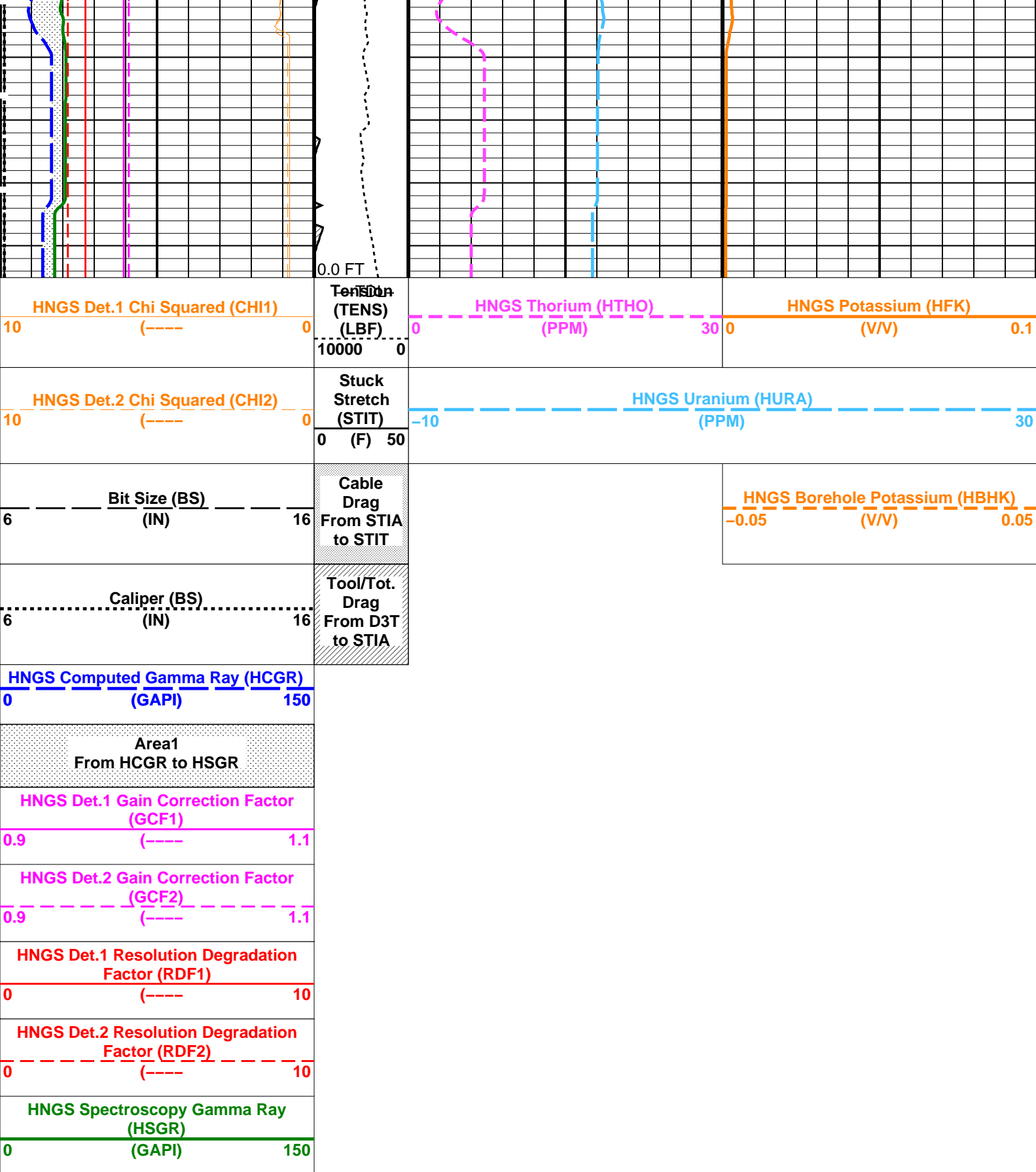




10200

10300





PIP SUMMARY

Time Mark Every 60 S

Parameters

DLIS Name	Description	Value
AIT-M:	Array Induction Tool – M	
BHS	Borehole Status	OPEN
GCSE	Generalized Caliper Selection	HCAL
HILTH-FTB:	High resolution Integrated Logging Tool-DTS	

BHS	Borehole Status	OPEN	
GCSE	Generalized Caliper Selection	HCAL	
HNGS-BA: Hostile Natural Gamma Ray Sonde			
BAR1	HNGS Detector 1 Barite Constant	1	
BAR2	HNGS Detector 2 Barite Constant	1	
BHK	HNGS Borehole Potassium Correction Concentration	0	
BHS	Borehole Status	OPEN	
CSD1	Inner Casing Outer Diameter	0	IN
CSD2	Outer Casing Outer Diameter	0	IN
CSW1	Inner Casing Weight	0	LB/F
CSW2	Outer Casing Weight	0	LB/F
DBCC	HNGS Barite Constant Correction Flag	NONE	
GCSE	Generalized Caliper Selection	HCAL	
H1P	HNGS Detector 1 Allow/Disallow In Processing	ALLOW	
H2P	HNGS Detector 2 Allow/Disallow In Processing	ALLOW	
HABK	HNGS Borehole Potassium Running Average	0.00590132	
HALF	HNGS Alpha Filter Length	60	IN
HCRB	HNGS Apply Borehole Potassium Correction	NONE	
HMWM	Mud Weighting Material	NATU	
HNPE	HNGS Processing Enable	YES	
S1BI	HNGS Detector 1 Calibration Bismuth Count Rate	1.3	CPS
S2BI	HNGS Detector 2 Calibration Bismuth Count Rate	1.3	CPS
SGRC	HNGS Standard Gamma-Ray Correction Flag	YES	
TPOS	Tool Position	ECCE	
VBA1	HNGS Detector 1 Variable Barite Factor Running Average	0.978635	
VBA2	HNGS Detector 2 Variable Barite Factor Running Average	0.994055	
ADT-C: Array Dielectric Tool			
ADT_MEPS	Matrix Dielectric Permittivity	4.65	
MUDFILTSALMAX	Maximum Mud Filtrate Salinity	43.6402	PPK
MUDFILTSALMIN	Minimum Mud Filtrate Salinity	0	PPK
DIRPLOT: Enhanced Directional Plots			
BHS	Borehole Status	OPEN	
GCSE	Generalized Caliper Selection	HCAL	
HOLEV: Integrated Hole/Cement Volume			
BHS	Borehole Status	OPEN	
GCSE	Generalized Caliper Selection	HCAL	
PERT: Preliminary Evaluation - Real Time			
BHS	Borehole Status	OPEN	
GCSE	Generalized Caliper Selection	HCAL	
STI: Stuck Tool Indicator			
LBFR	Trigger for MAXIS First Reading Label	STI	
STKT	STI Stuck Threshold	2.5	FT
TDD	Total Depth - Driller	10372.00	FT
TDL	Total Depth - Logger	10381.00	FT
DIR: Directional Survey Computation			
SPVD	TVD of Starting Point	0	FT
TIMD	Along-hole depth of Tie-in Point	0	FT
TIVD	TVD of Tie-in Point	0	FT
System and Miscellaneous			
BS	Bit Size	6.125	IN
DFD	Drilling Fluid Density	8.90	LB/G
DO	Depth Offset for Playback	8.0	FT
DORL	Depth Offset for Repeat Analysis	0.0	FT
PP	Playback Processing	NORMAL	

Format: HNGSYields Vertical Scale: 5" per 100' Graphics File Created: 17-Jul-2012 17:29

OP System Version: 19C1-222

AIT-M	19C1-222	HILTH-FTB	19C1-222
HNGC-B	19C1-222	HNGS-BA	19C1-222
ADT-C	SRPC-5195-ADT-C_t	DTC-H	19C1-222

Input DLIS Files

DEFAULT	AIT_TLD_MCFL_CNL_006LUP	FN:5	PRODUCER	17-Jul-2012 14:15	10387.5 FT	8660.0 FT
---------	-------------------------	------	----------	-------------------	------------	-----------

Output DLIS Files

DEFAULT	AIT_TLD_MCFL_CNL_020PUP	FN:18	PRODUCER	17-Jul-2012 17:29
---------	-------------------------	-------	----------	-------------------

Company: **Noble Energy Inc**

Schlumberger

Well: **Con GQ 07-01**

Field: **Jupiter**

County: **Weld**

County: Weld
State: Colorado

Hostile Natural Gamma Ray Sonde