

# BONANZA CREEK OIL COMPANY

Location: COLORADO Slot: SLOT#02 NORTH PLATTE FEDERAL K-O-22HNB (323'FNL & 2562'FEL,SEC.22)  
Field: WELD COUNTY Well: NORTH PLATTE FEDERAL K-O-22HNB  
Facility: SEC.22-T5N-R63W Wellbore: NORTH PLATTE FEDERAL K-O-22HNB PWB

Plot reference wellpath is NORTH PLATTE FEDERAL K-O-22HNB (REV-B.0) PWB

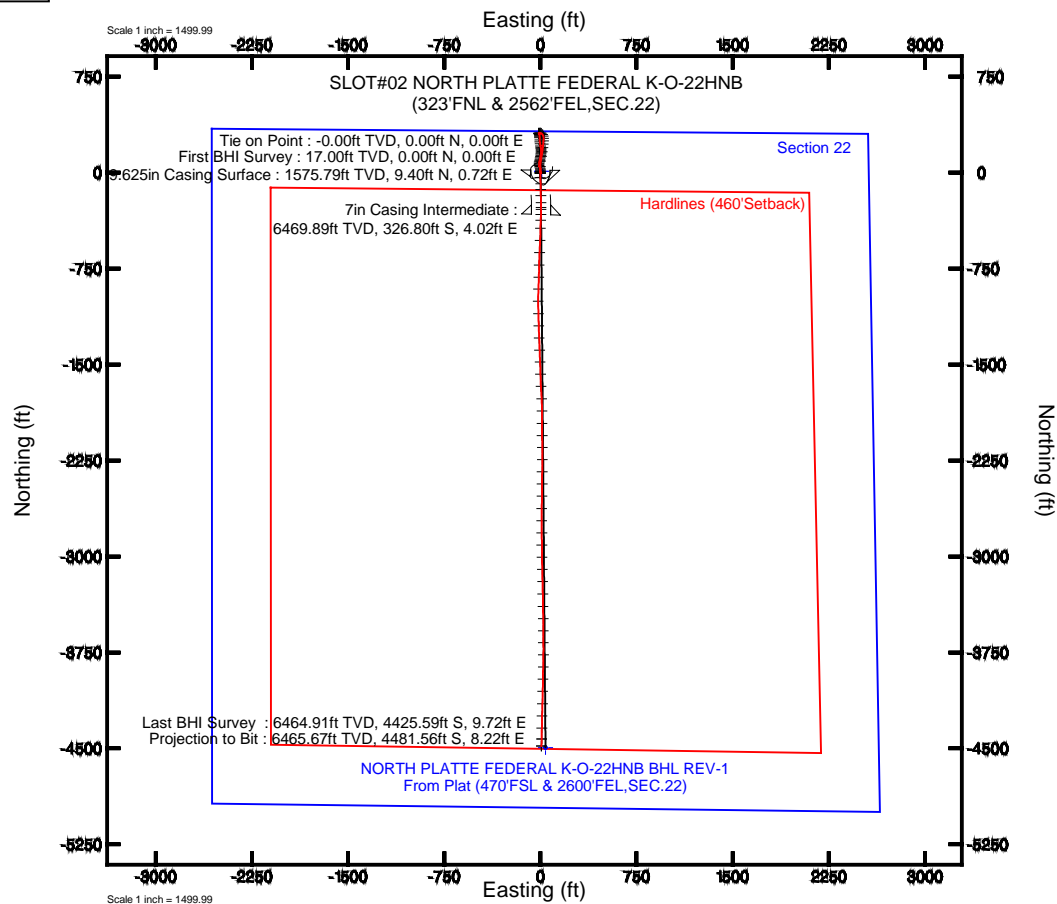
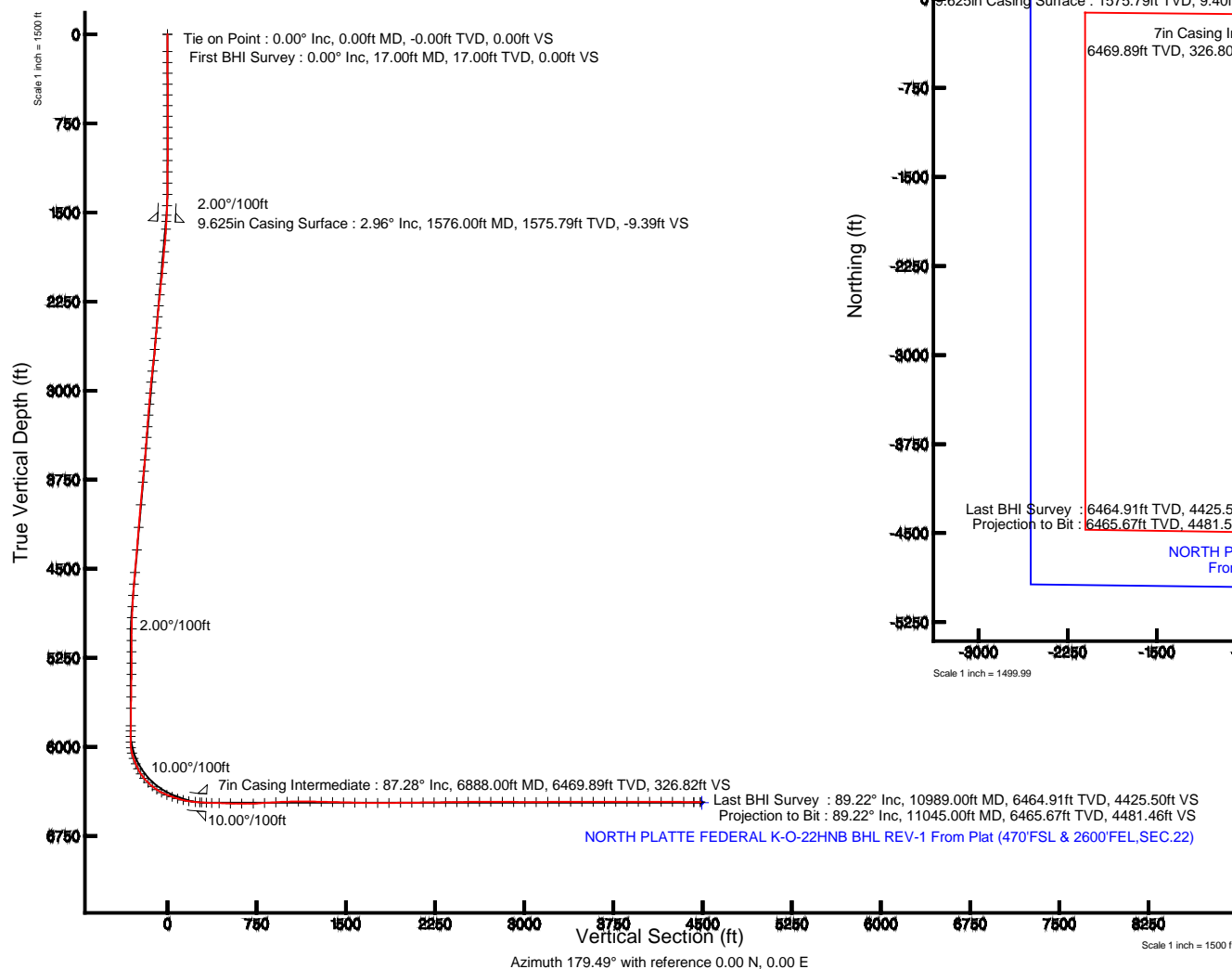
True vertical depths are referenced to CADE 22 (RKB)	Grid System: NAD83 / Lambert Colorado SP, Northern Zone (501), US feet
Measured depths are referenced to CADE 22 (RKB)	North Reference: True north
CADE 22 (RKB) to Mean Sea Level: 4666 feet	Scale: True distance
Mean Sea Level to Mud line (At Slot: SLOT#02 NORTH PLATTE FEDERAL K-O-22HNB (323'FNL & 2562'FEL,SEC.22)): 0 feet	Depths are in feet
Coordinates are in feet referenced to Slot	Created by: guenaler on 12/4/2013

## Location Information

Facility Name				Grid East (US FS)	Grid North (US FS)	Latitude	Longitude
SEC.22-T5N-R63W				330333.873	1387231.531	47°22'38.3327N	104°20'16.8327W
Site	Local W (FS)	Local E (FS)		Grid East (US FS)	Grid North (US FS)	Latitude	Longitude
SLOT#02 NORTH PLATTE FEDERAL K-O-22HNB (323'FNL & 2562'FEL,SEC.22)	-15.32	-8.93		330333.874	1387193.300	47°22'38.4027N	104°20'16.8477W
CADE 22 (RKB) to Mud line (At Slot: SLOT#02 NORTH PLATTE FEDERAL K-O-22HNB (323'FNL & 2562'FEL,SEC.22))							4666
Mean Sea Level to Mud line (At Slot: SLOT#02 NORTH PLATTE FEDERAL K-O-22HNB (323'FNL & 2562'FEL,SEC.22))							0
CADE 22 (RKB) to Mean Sea Level							4666



# BAKER HUGHES





# Actual Wellpath Report

NORTH PLATTE FEDERAL K-O-22HNB AWP

Page 1 of 7



## REFERENCE WELLPATH IDENTIFICATION

Operator	BONANZA CREEK OIL COMPANY	Slot	SLOT#02 NORTH PLATTE FEDERAL K-O-22HNB (323'FNL & 2562'FEL,SEC.22)
Area	COLORADO	Well	NORTH PLATTE FEDERAL K-O-22HNB
Field	WELD COUNTY	Wellbore	NORTH PLATTE FEDERAL K-O-22HNB AWP
Facility	SEC.22-T5N-R63W		

## REPORT SETUP INFORMATION

Projection System	NAD83 / Lambert Colorado SP, Northern Zone (501), US feet	Software System	WellArchitect® 4.0.0
North Reference	True	User	Guenaler
Scale	0.99996	Report Generated	12/4/2013 at 3:52:02 PM
Convergence at slot	n/a	Database/Source file	WA_Denver/NORTH_PLATTE_FEDERAL_K-O-22HNB_AWP.xml

## WELLPATH LOCATION

	Local coordinates		Grid coordinates		Geographic coordinates	
	North[ft]	East[ft]	Easting[US ft]	Northing[US ft]	Latitude	Longitude
Slot Location	-10.52	-8.90	3300285.10	1387190.90	40°23'28.428"N	104°25'18.948"W
Facility Reference Pt			3300293.87	1387201.53	40°23'28.532"N	104°25'18.833"W
Field Reference Pt			3327718.19	1377782.99	40°21'52.020"N	104°19'26.040"W

## WELLPATH DATUM

Calculation method	Minimum curvature	CADE 22 (RKB) to Facility Vertical Datum	4666.00ft
Horizontal Reference Pt	Slot	CADE 22 (RKB) to Mean Sea Level	4666.00ft
Vertical Reference Pt	CADE 22 (RKB)	CADE 22 (RKB) to Mud Line at Slot (SLOT#02 NORTH PLATTE FEDERAL K-O-22HNB (323'FNL & 2562'FEL,SEC.22))	4666.00ft
MD Reference Pt	CADE 22 (RKB)	Section Origin	N 0.00, E 0.00 ft
Field Vertical Reference	Mean Sea Level	Section Azimuth	179.89°



# Actual Wellpath Report

## NORTH PLATTE FEDERAL K-O-22HNB AWP

Page 2 of 7



### REFERENCE WELLPATH IDENTIFICATION

Operator	BONANZA CREEK OIL COMPANY	Slot	SLOT#02 NORTH PLATTE FEDERAL K-O-22HNB (323'FNL & 2562'FEL,SEC.22)
Area	COLORADO	Well	NORTH PLATTE FEDERAL K-O-22HNB
Field	WELD COUNTY	Wellbore	NORTH PLATTE FEDERAL K-O-22HNB AWP
Facility	SEC.22-T5N-R63W		

### WELLPATH DATA (126 stations)

MD [ft]	Inclination [°]	Azimuth [°]	TVD [ft]	Vert Sect [ft]	North [ft]	East [ft]	Latitude	Longitude	DLS [°/100ft]	Comments
0.00	0.000	248.100	0.00	0.00	0.00	0.00	40°23'28.428"N	104°25'18.948"W	0.00	Tie on Point
17.00	0.000	248.100	17.00	0.00	0.00	0.00	40°23'28.428"N	104°25'18.948"W	0.00	First BHI Survey
145.00	0.420	248.100	145.00	0.17	-0.17	-0.44	40°23'28.426"N	104°25'18.954"W	0.33	
237.00	0.370	219.010	237.00	0.53	-0.53	-0.94	40°23'28.423"N	104°25'18.960"W	0.22	
328.00	0.440	217.330	327.99	1.04	-1.04	-1.33	40°23'28.418"N	104°25'18.965"W	0.08	
419.00	0.530	230.770	418.99	1.58	-1.58	-1.87	40°23'28.412"N	104°25'18.972"W	0.16	
509.00	0.540	201.920	508.99	2.23	-2.24	-2.35	40°23'28.406"N	104°25'18.978"W	0.30	
600.00	0.180	167.290	599.99	2.77	-2.78	-2.48	40°23'28.401"N	104°25'18.980"W	0.45	
691.00	0.340	83.270	690.98	2.88	-2.88	-2.18	40°23'28.400"N	104°25'18.976"W	0.40	
782.00	0.460	43.350	781.98	2.58	-2.59	-1.66	40°23'28.402"N	104°25'18.969"W	0.32	
874.00	0.390	28.680	873.98	2.04	-2.04	-1.26	40°23'28.408"N	104°25'18.964"W	0.14	
969.00	0.130	99.300	968.98	1.77	-1.78	-1.00	40°23'28.410"N	104°25'18.961"W	0.39	
1064.00	0.420	39.710	1063.98	1.53	-1.53	-0.67	40°23'28.413"N	104°25'18.957"W	0.39	
1159.00	0.340	18.990	1158.98	0.99	-0.99	-0.35	40°23'28.418"N	104°25'18.953"W	0.17	
1253.00	0.330	335.950	1252.97	0.48	-0.48	-0.37	40°23'28.423"N	104°25'18.953"W	0.26	
1349.00	1.240	13.870	1348.97	-0.78	0.78	-0.24	40°23'28.436"N	104°25'18.951"W	1.04	
1444.00	1.890	10.050	1443.93	-3.32	3.32	0.28	40°23'28.461"N	104°25'18.944"W	0.69	
1524.00	2.990	3.270	1523.86	-6.70	6.70	0.63	40°23'28.494"N	104°25'18.940"W	1.42	
1640.00	2.940	356.520	1639.70	-12.69	12.69	0.63	40°23'28.553"N	104°25'18.940"W	0.30	
1736.00	5.660	355.190	1735.42	-19.87	19.87	0.08	40°23'28.624"N	104°25'18.947"W	2.84	
1831.00	5.140	351.710	1830.00	-28.75	28.75	-0.93	40°23'28.712"N	104°25'18.960"W	0.65	
1923.00	5.420	335.830	1921.61	-36.80	36.79	-3.30	40°23'28.792"N	104°25'18.991"W	1.61	
2014.00	5.950	341.960	2012.17	-45.21	45.20	-6.52	40°23'28.875"N	104°25'19.032"W	0.88	
2106.00	6.510	346.300	2103.62	-54.81	54.80	-9.23	40°23'28.969"N	104°25'19.067"W	0.79	
2196.00	6.080	357.220	2193.08	-64.53	64.52	-10.67	40°23'29.066"N	104°25'19.086"W	1.41	
2289.00	5.400	8.040	2285.62	-73.79	73.77	-10.30	40°23'29.157"N	104°25'19.081"W	1.37	
2381.00	5.580	12.280	2377.20	-82.44	82.42	-8.74	40°23'29.242"N	104°25'19.061"W	0.48	
2474.00	4.740	17.770	2469.82	-90.51	90.50	-6.61	40°23'29.322"N	104°25'19.033"W	1.05	
2566.00	5.440	10.070	2561.46	-98.42	98.42	-4.69	40°23'29.401"N	104°25'19.009"W	1.06	
2658.00	4.690	11.470	2653.10	-106.40	106.40	-3.18	40°23'29.479"N	104°25'18.989"W	0.83	



# Actual Wellpath Report

NORTH PLATTE FEDERAL K-O-22HNB AWP

Page 3 of 7



REFERENCE WELLPATH IDENTIFICATION			
Operator	BONANZA CREEK OIL COMPANY	Slot	SLOT#02 NORTH PLATTE FEDERAL K-O-22HNB (323'FNL & 2562'FEL,SEC.22)
Area	COLORADO	Well	NORTH PLATTE FEDERAL K-O-22HNB
Field	WELD COUNTY	Wellbore	NORTH PLATTE FEDERAL K-O-22HNB AWP
Facility	SEC.22-T5N-R63W		

WELLPATH DATA (126 stations)										
MD [ft]	Inclination [°]	Azimuth [°]	TVD [ft]	Vert Sect [ft]	North [ft]	East [ft]	Latitude	Longitude	DLS [°/100ft]	Comments
2751.00	6.730	9.210	2745.63	-115.50	115.50	-1.55	40°23'29.569"N	104°25'18.968"W	2.21	
2843.00	6.690	9.780	2837.00	-126.10	126.10	0.23	40°23'29.674"N	104°25'18.945"W	0.08	
2935.00	5.980	11.680	2928.44	-136.07	136.08	2.11	40°23'29.773"N	104°25'18.921"W	0.80	
3027.00	5.260	8.940	3020.00	-144.93	144.94	3.73	40°23'29.860"N	104°25'18.900"W	0.83	
3120.00	4.660	6.700	3112.65	-152.89	152.90	4.84	40°23'29.939"N	104°25'18.886"W	0.68	
3215.00	5.040	358.500	3207.31	-160.90	160.91	5.18	40°23'30.018"N	104°25'18.881"W	0.83	
3311.00	3.980	357.430	3303.01	-168.44	168.45	4.92	40°23'30.093"N	104°25'18.884"W	1.11	
3401.00	4.600	358.210	3392.76	-175.17	175.18	4.66	40°23'30.159"N	104°25'18.888"W	0.69	
3496.00	3.790	359.310	3487.50	-182.12	182.12	4.51	40°23'30.228"N	104°25'18.890"W	0.86	
3592.00	5.300	352.260	3583.20	-189.68	189.69	3.87	40°23'30.302"N	104°25'18.898"W	1.67	
3688.00	5.470	354.220	3678.78	-198.63	198.64	2.81	40°23'30.391"N	104°25'18.912"W	0.26	
3782.00	5.630	349.020	3772.34	-207.62	207.62	1.48	40°23'30.480"N	104°25'18.929"W	0.56	
3973.00	5.180	348.320	3962.49	-225.26	225.26	-2.05	40°23'30.654"N	104°25'18.974"W	0.24	
4163.00	4.670	358.560	4151.79	-241.40	241.39	-3.98	40°23'30.813"N	104°25'18.999"W	0.53	
4354.00	4.660	353.600	4342.16	-256.89	256.88	-5.04	40°23'30.966"N	104°25'19.013"W	0.21	
4545.00	5.090	358.580	4532.47	-273.07	273.06	-6.11	40°23'31.126"N	104°25'19.027"W	0.32	
4641.00	4.870	356.390	4628.10	-281.39	281.38	-6.47	40°23'31.209"N	104°25'19.032"W	0.30	
4737.00	3.500	1.320	4723.85	-288.39	288.38	-6.66	40°23'31.278"N	104°25'19.034"W	1.47	
4832.00	3.230	0.490	4818.68	-293.96	293.95	-6.57	40°23'31.333"N	104°25'19.033"W	0.29	
4926.00	1.940	22.990	4912.59	-298.08	298.07	-5.93	40°23'31.373"N	104°25'19.025"W	1.72	
5021.00	1.330	356.100	5007.55	-300.66	300.65	-5.38	40°23'31.399"N	104°25'19.017"W	1.02	
5117.00	0.660	245.370	5103.54	-301.54	301.53	-5.95	40°23'31.408"N	104°25'19.025"W	1.75	
5213.00	0.940	271.090	5199.53	-301.33	301.31	-7.24	40°23'31.405"N	104°25'19.042"W	0.47	
5309.00	0.840	305.860	5295.52	-301.75	301.74	-8.60	40°23'31.410"N	104°25'19.059"W	0.56	
5404.00	0.890	308.040	5390.51	-302.62	302.60	-9.75	40°23'31.418"N	104°25'19.074"W	0.06	
5499.00	0.970	328.940	5485.50	-303.76	303.75	-10.74	40°23'31.430"N	104°25'19.087"W	0.36	
5593.00	1.010	334.100	5579.48	-305.19	305.17	-11.52	40°23'31.444"N	104°25'19.097"W	0.10	
5687.00	0.750	345.460	5673.47	-306.53	306.51	-12.03	40°23'31.457"N	104°25'19.103"W	0.33	
5835.00	0.430	326.900	5821.46	-307.94	307.92	-12.58	40°23'31.471"N	104°25'19.111"W	0.25	
5878.00	0.840	55.880	5864.46	-308.25	308.23	-12.41	40°23'31.474"N	104°25'19.108"W	2.18	



# Actual Wellpath Report

## NORTH PLATTE FEDERAL K-O-22HNB AWP

Page 4 of 7



REFERENCE WELLPATH IDENTIFICATION			
Operator	BONANZA CREEK OIL COMPANY	Slot	SLOT#02 NORTH PLATTE FEDERAL K-O-22HNB (323'FNL & 2562'FEL,SEC.22)
Area	COLORADO	Well	NORTH PLATTE FEDERAL K-O-22HNB
Field	WELD COUNTY	Wellbore	NORTH PLATTE FEDERAL K-O-22HNB AWP
Facility	SEC.22-T5N-R63W		

WELLPATH DATA (126 stations)										
MD [ft]	Inclination [°]	Azimuth [°]	TVD [ft]	Vert Sect [ft]	North [ft]	East [ft]	Latitude	Longitude	DLS [°/100ft]	Comments
5926.00	7.490	78.030	5912.31	-309.09	309.08	-9.05	40°23'31.482"N	104°25'19.065"W	14.00	
5975.00	11.020	88.250	5960.67	-309.88	309.88	-1.24	40°23'31.490"N	104°25'18.964"W	7.92	
6023.00	13.360	123.810	6007.65	-306.92	306.93	7.97	40°23'31.461"N	104°25'18.845"W	16.09	
6070.00	16.310	142.750	6053.10	-298.62	298.65	16.48	40°23'31.379"N	104°25'18.735"W	12.00	
6117.00	20.690	164.800	6097.71	-285.32	285.36	22.66	40°23'31.248"N	104°25'18.655"W	17.41	
6166.00	23.560	181.130	6143.15	-267.15	267.20	24.74	40°23'31.068"N	104°25'18.628"W	13.80	
6213.00	26.710	185.330	6185.69	-247.24	247.28	23.57	40°23'30.872"N	104°25'18.643"W	7.70	
6261.00	32.070	183.430	6227.50	-223.76	223.80	21.81	40°23'30.640"N	104°25'18.666"W	11.33	
6308.00	40.580	187.110	6265.34	-196.09	196.12	19.16	40°23'30.366"N	104°25'18.700"W	18.68	
6357.00	46.100	188.530	6300.96	-162.80	162.82	14.57	40°23'30.037"N	104°25'18.760"W	11.44	
6404.00	52.030	190.780	6331.74	-127.83	127.85	8.59	40°23'29.691"N	104°25'18.837"W	13.12	
6452.00	56.440	187.250	6359.80	-89.39	89.39	2.52	40°23'29.311"N	104°25'18.915"W	10.95	
6499.00	62.020	181.660	6383.85	-49.17	49.17	-0.56	40°23'28.914"N	104°25'18.955"W	15.66	
6548.00	69.440	178.480	6403.98	-4.54	4.54	-0.58	40°23'28.473"N	104°25'18.955"W	16.26	
6595.00	71.140	178.780	6419.83	39.70	-39.70	0.48	40°23'28.036"N	104°25'18.942"W	3.67	
6644.00	71.380	177.780	6435.57	86.08	-86.08	1.87	40°23'27.577"N	104°25'18.924"W	1.99	
6691.00	77.090	179.730	6448.34	131.28	-131.28	2.85	40°23'27.131"N	104°25'18.911"W	12.79	
6740.00	81.520	178.820	6457.43	179.41	-179.41	3.46	40°23'26.655"N	104°25'18.903"W	9.22	
6795.00	84.730	179.460	6464.01	234.01	-234.00	4.28	40°23'26.116"N	104°25'18.893"W	5.95	
6833.00	86.500	179.670	6466.92	271.89	-271.89	4.56	40°23'25.741"N	104°25'18.889"W	4.69	
6849.00	86.760	180.280	6467.86	287.87	-287.86	4.57	40°23'25.583"N	104°25'18.889"W	4.14	
6934.00	87.890	182.580	6471.82	372.74	-372.73	2.45	40°23'24.745"N	104°25'18.916"W	3.01	
6996.00	88.670	180.820	6473.69	434.67	-434.67	0.61	40°23'24.133"N	104°25'18.940"W	3.10	
7091.00	88.050	182.240	6476.40	529.59	-529.60	-1.92	40°23'23.195"N	104°25'18.973"W	1.63	
7187.00	89.750	182.980	6478.25	625.46	-625.48	-6.29	40°23'22.247"N	104°25'19.029"W	1.93	
7283.00	91.680	180.830	6477.05	721.39	-721.41	-9.48	40°23'21.299"N	104°25'19.071"W	3.01	
7379.00	93.860	182.390	6472.41	817.22	-817.25	-12.18	40°23'20.352"N	104°25'19.105"W	2.79	
7473.00	93.580	181.730	6466.31	910.96	-910.99	-15.55	40°23'19.426"N	104°25'19.149"W	0.76	
7568.00	91.940	179.830	6461.74	1005.83	-1005.86	-16.84	40°23'18.488"N	104°25'19.166"W	2.64	
7664.00	91.040	178.500	6459.24	1101.79	-1101.82	-15.44	40°23'17.540"N	104°25'19.148"W	1.67	



# Actual Wellpath Report

## NORTH PLATTE FEDERAL K-O-22HNB AWP

Page 5 of 7



REFERENCE WELLPATH IDENTIFICATION			
Operator	BONANZA CREEK OIL COMPANY	Slot	SLOT#02 NORTH PLATTE FEDERAL K-O-22HNB (323'FNL & 2562'FEL,SEC.22)
Area	COLORADO	Well	NORTH PLATTE FEDERAL K-O-22HNB
Field	WELD COUNTY	Wellbore	NORTH PLATTE FEDERAL K-O-22HNB AWP
Facility	SEC.22-T5N-R63W		

WELLPATH DATA (126 stations)										
MD [ft]	Inclination [°]	Azimuth [°]	TVD [ft]	Vert Sect [ft]	North [ft]	East [ft]	Latitude	Longitude	DLS [°/100ft]	Comments
7760.00	88.320	178.480	6459.78	1197.75	-1197.77	-12.91	40°23'16.592"N	104°25'19.115"W	2.83	
7856.00	88.640	177.690	6462.32	1293.66	-1293.68	-9.70	40°23'15.644"N	104°25'19.073"W	0.89	
7951.00	88.640	178.020	6464.58	1388.58	-1388.59	-6.15	40°23'14.706"N	104°25'19.027"W	0.35	
8043.00	88.430	177.100	6466.93	1480.47	-1480.48	-2.23	40°23'13.798"N	104°25'18.977"W	1.03	
8138.00	88.090	178.920	6469.81	1575.37	-1575.37	1.06	40°23'12.861"N	104°25'18.934"W	1.95	
8234.00	89.350	177.200	6471.96	1671.29	-1671.29	4.31	40°23'11.913"N	104°25'18.892"W	2.22	
8330.00	89.870	176.930	6472.61	1767.17	-1767.16	9.23	40°23'10.966"N	104°25'18.829"W	0.61	
8425.00	90.720	179.700	6472.12	1862.12	-1862.10	12.02	40°23'10.027"N	104°25'18.793"W	3.05	
8522.00	91.080	179.540	6470.60	1959.11	-1959.09	12.66	40°23'09.069"N	104°25'18.784"W	0.41	
8617.00	90.160	179.630	6469.57	2054.10	-2054.08	13.35	40°23'08.130"N	104°25'18.775"W	0.97	
8712.00	91.340	178.440	6468.33	2149.08	-2149.06	14.95	40°23'07.192"N	104°25'18.755"W	1.76	
8805.00	90.100	180.650	6467.16	2242.06	-2242.04	15.69	40°23'06.273"N	104°25'18.745"W	2.72	
8901.00	91.520	181.380	6465.80	2338.03	-2338.01	13.99	40°23'05.325"N	104°25'18.767"W	1.66	
8997.00	89.970	179.410	6464.55	2434.01	-2433.99	13.33	40°23'04.376"N	104°25'18.776"W	2.61	
9092.00	91.180	181.470	6463.60	2529.00	-2528.98	12.60	40°23'03.437"N	104°25'18.785"W	2.51	
9188.00	90.780	181.280	6461.96	2624.95	-2624.94	10.30	40°23'02.489"N	104°25'18.815"W	0.46	
9283.00	89.350	178.830	6461.85	2719.94	-2719.93	10.21	40°23'01.551"N	104°25'18.816"W	2.99	
9379.00	89.720	180.070	6462.63	2815.93	-2815.92	11.13	40°23'00.602"N	104°25'18.804"W	1.35	
9474.00	89.170	179.460	6463.55	2910.93	-2910.91	11.52	40°22'59.663"N	104°25'18.799"W	0.86	
9570.00	89.350	179.060	6464.79	3006.91	-3006.89	12.76	40°22'58.715"N	104°25'18.783"W	0.46	
9664.00	90.060	178.820	6465.27	3100.90	-3100.88	14.49	40°22'57.786"N	104°25'18.761"W	0.80	
9760.00	91.430	178.620	6464.03	3196.87	-3196.84	16.64	40°22'56.838"N	104°25'18.733"W	1.44	
9857.00	89.720	178.830	6463.05	3293.84	-3293.81	18.80	40°22'55.880"N	104°25'18.705"W	1.78	
9953.00	90.870	179.240	6462.56	3389.82	-3389.79	20.41	40°22'54.931"N	104°25'18.684"W	1.27	
10049.00	89.500	178.680	6462.25	3485.81	-3485.77	22.16	40°22'53.983"N	104°25'18.662"W	1.54	
10143.00	89.970	180.530	6462.68	3579.80	-3579.77	22.80	40°22'53.054"N	104°25'18.653"W	2.03	
10237.00	89.700	178.950	6462.95	3673.80	-3673.76	23.23	40°22'52.125"N	104°25'18.648"W	1.71	
10332.00	90.370	180.790	6462.90	3768.79	-3768.76	23.45	40°22'51.186"N	104°25'18.645"W	2.06	
10428.00	90.000	181.290	6462.59	3864.77	-3864.74	21.70	40°22'50.238"N	104°25'18.668"W	0.65	
10522.00	90.410	180.910	6462.25	3958.75	-3958.72	19.90	40°22'49.309"N	104°25'18.691"W	0.59	



# Actual Wellpath Report

NORTH PLATTE FEDERAL K-O-22HNB AWP

Page 6 of 7



## REFERENCE WELLPATH IDENTIFICATION

Operator	BONANZA CREEK OIL COMPANY	Slot	SLOT#02 NORTH PLATTE FEDERAL K-O-22HNB (323'FNL & 2562'FEL,SEC.22)
Area	COLORADO	Well	NORTH PLATTE FEDERAL K-O-22HNB
Field	WELD COUNTY	Wellbore	NORTH PLATTE FEDERAL K-O-22HNB AWP
Facility	SEC.22-T5N-R63W		

## WELLPATH DATA (126 stations)

MD [ft]	Inclination [°]	Azimuth [°]	TVD [ft]	Vert Sect [ft]	North [ft]	East [ft]	Latitude	Longitude	DLS [°/100ft]	Comments
10618.00	90.000	180.980	6461.91	4054.73	-4054.71	18.32	40°22'48.361"N	104°25'18.711"W	0.43	
10714.00	89.880	181.850	6462.01	4150.70	-4150.68	15.95	40°22'47.412"N	104°25'18.742"W	0.91	
10809.00	89.160	181.550	6462.80	4245.65	-4245.63	13.13	40°22'46.474"N	104°25'18.778"W	0.82	
10905.00	89.470	180.630	6463.95	4341.62	-4341.61	11.30	40°22'45.526"N	104°25'18.802"W	1.01	
10989.00	89.220	181.530	6464.91	4425.60	-4425.59	9.72	40°22'44.696"N	104°25'18.822"W	1.11	Last BHI Survey
11045.00	89.220	181.530	6465.67	4481.57	-4481.56	8.22	40°22'44.143"N	104°25'18.842"W	0.00	Projection to Bit

## HOLE & CASING SECTIONS -

Ref Wellbore: NORTH PLATTE FEDERAL K-O-22HNB AWP      Ref Wellpath: NORTH PLATTE FEDERAL K-O-22HNB AWP

String/Diameter	Start MD [ft]	End MD [ft]	Interval [ft]	Start TVD [ft]	End TVD [ft]	Start N/S [ft]	Start E/W [ft]	End N/S [ft]	End E/W [ft]
13.5in Open Hole	0.00	1524.00	1524.00	0.00	1523.86	0.00	0.00	6.70	0.63
9.625in Casing Surface	17.00	1576.00	1559.00	17.00	1575.79	0.00	0.00	9.40	0.72
8.75in Open Hole	1582.00	6849.00	5267.00	1581.78	6467.86	9.71	0.72	-287.86	4.57
7in Casing Intermediate	17.00	6888.00	6871.00	17.00	6469.89	0.00	0.00	-326.80	4.02
6.125in Open Hole	6849.00	11049.00	4200.00	6467.86	NA	-287.86	4.57	NA	NA

## WELLPATH COMPOSITION -

Ref Wellbore: NORTH PLATTE FEDERAL K-O-22HNB AWP      Ref Wellpath: NORTH PLATTE FEDERAL K-O-22HNB AWP

Start MD [ft]	End MD [ft]	Positional Uncertainty Model	Log Name/Comment	Wellbore
0.00	6849.00	NaviTrak (MagCorr)	BHI/Navitrak MWD 8.75" Hole <17-6849>	NORTH PLATTE FEDERAL K-O-22HNB AWP
6849.00	10989.00	NaviTrak (MagCorr)	BHI/Navitrak MWD 6.125" Hole <6943'-10989>	NORTH PLATTE FEDERAL K-O-22HNB AWP
10989.00	11045.00	Blind Drilling (std)	Projection to bit	NORTH PLATTE FEDERAL K-O-22HNB AWP



**Actual Wellpath Report**  
**NORTH PLATTE FEDERAL K-O-22HNB AWP**  
Page 7 of 7



REFERENCE WELLPATH IDENTIFICATION			
Operator	BONANZA CREEK OIL COMPANY	Slot	SLOT#02 NORTH PLATTE FEDERAL K-O-22HNB (323'FNL & 2562'FEL,SEC.22)
Area	COLORADO	Well	NORTH PLATTE FEDERAL K-O-22HNB
Field	WELD COUNTY	Wellbore	NORTH PLATTE FEDERAL K-O-22HNB AWP
Facility	SEC.22-T5N-R63W		

WELLPATH COMMENTS				
MD [ft]	Inclination [°]	Azimuth [°]	TVD [ft]	Comment
0.00	0.000	248.100	0.00	Tie on Point
17.00	0.000	248.100	17.00	First BHI Survey
10989.00	89.220	181.530	6464.91	Last BHI Survey
11045.00	89.220	181.530	6465.67	Projection to Bit