

**BILL BARRETT CORPORATION E-BILL
DO NOT MAIL-1099 18TH ST,STE 2300W
DENVER, Colorado**

Anschutz State 5-62-25-0108BH

SST 17

Post Job Summary Plug Back

Date Prepared: 12/17/2013
Version: 1

Service Supervisor: PICKELL, CHRISTOPHER

Submitted by: HINDS, MOLLYE

HALLIBURTON

HALLIBURTON

Wellbore Geometry

Job Tubulars					MD	
Type	Description	Size in	ID in	Wt lbm/ft	Top ft	Bottom ft
Tubing	2.875" Tubing	2.38	1.995	4.70	0.00	6,868.00
Drill Pipe	4 XT 39 Drill Pipe		4.000		0.00	5,600.00

Pumping Schedule

Plug #1	Fluid #	Fluid Type	Fluid Name	Surface Density lbm/gal	Avg Rate bbl/min	Surface Volume	Downhole Volume
1	1	Spacer	Tuned Spacer III	11.00	3.00	6.8 bbl	6.8 bbl
1	2	Cement Slurry	Cement	15.80	3.00	40.0 sacks	40.0 sacks
1	3	Spacer	Tuned Spacer III	11.00	3.00	3.2 bbl	3.2 bbl
1	4	Displacement	WBM	9.5	3.00	54.8 bbl	54.8 bbl

Plug #2	Fluid #	Fluid Type	Fluid Name	Surface Density lbm/gal	Avg Rate bbl/min	Surface Volume	Downhole Volume
2	1	Spacer	Tuned Spacer III	11.00	3.00	8.5 bbl	8.5 bbl
2	2	Cement Slurry	Cement	15.80	3.00	40.0 sacks	40.0 sacks
2	3	Spacer	Tuned Spacer III	11.00	3.00	1.5 bbl	4.5 bbl
2	4	Displacement	WBM	9.5	3.00	6.8 bbl	6.8 bbl

HALLIBURTON

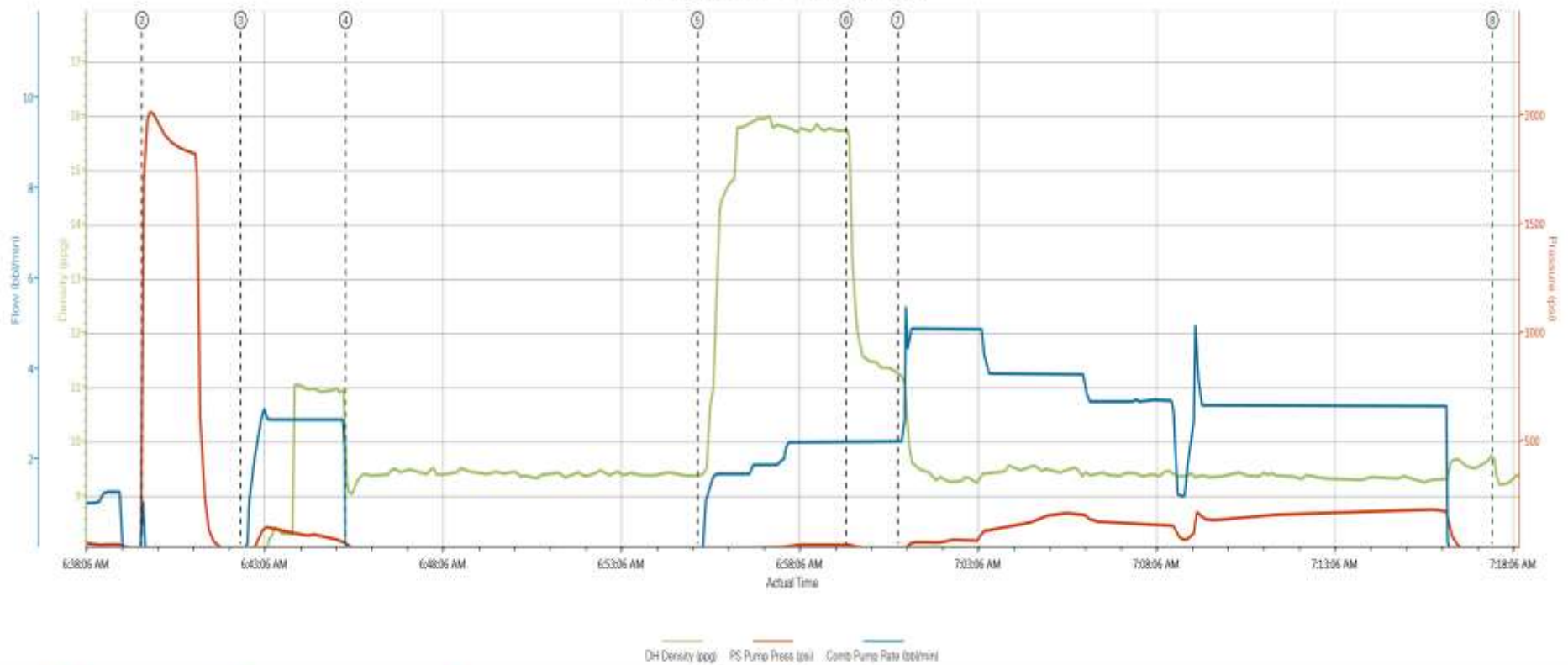
Plug #3	Fluid #	Fluid Type	Fluid Name	Surface Density lbm/gal	Avg Rate bbl/min	Surface Volume	Downhole Volume
3	1	Spacer	Tuned Spacer III	11.00	3.00	8.5 bbl	8.5 bbl
3	2	Cement Slurry	Cement	15.80	3.00	40.0 sacks	40.0 sacks
3	3	Spacer	Tuned Spacer III	11.00	3.00	1.5 bbl	1.5 bbl
3	4	Displacement	WBM	9.5	3.00	1.6 bbl	1.6 bbl

Plug #4	Fluid #	Fluid Type	Fluid Name	Surface Density lbm/gal	Avg Rate bbl/min	Surface Volume	Downhole Volume
4	1	Spacer	Water	8.33	3.00	8.5 bbl	8.5 bbl
4	2	Cement Slurry	Cement	15.80	2.00	12.0 sacks	12.0 sacks
4	3	Spacer	Water	8.33	2.00	1.5 bbl	1.5 bbl

Data Acquisition

Plug #1

ANSCHUTZ STATE 5-62-25-0108BH (PLUG 1)

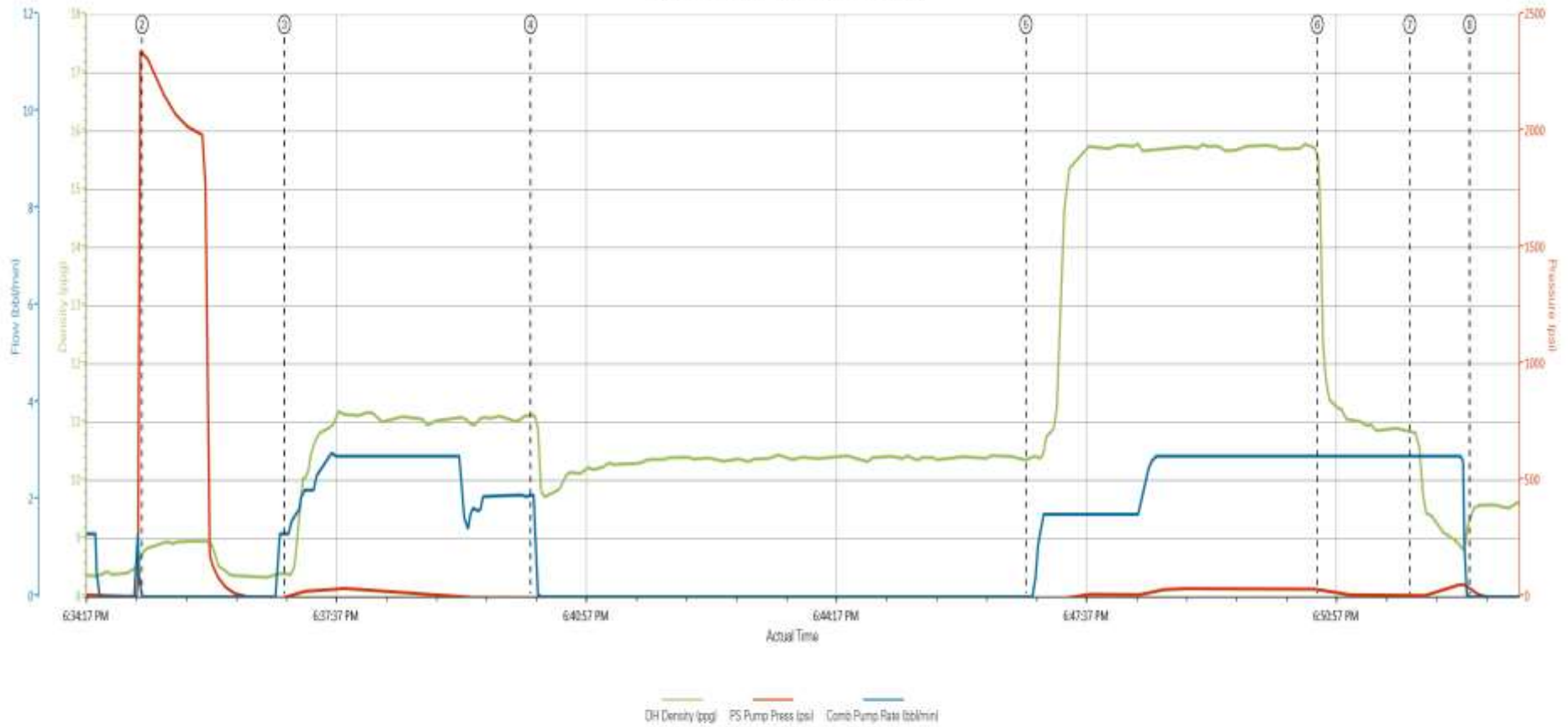


① Start Job 6:31:32.0 ⑤ Shutdown 7:12:23.0 ⑨ Pump Displacement 11:21:52.4
 ② Test Lines 6:39:17.0 ⑥ Pump Haltem 15:31:40.0 ⑧ Shutdown 11:25:23.0
 ③ Pump Tuned Spacer 11# 6:44:23.0 ⑦ Pump Tuned Spacer 11# 16:75:20.2.4

HALLIBURTON

Plug #2

ANSCHUTZ STATE 5-62-25-0108BH (PLUG 2)



① Start Job 0.04-14.1.1 ⑤ Shutdown 11.12-4.2.1 ⑦ Pump Displacement 10.04-5.2.9
 ② Test Lines 0.79-2331.0 ⑥ Pump Hakeem 15.8# 10.35-17.0 ⑧ Shutdown 9.45-24.0
 ③ Pump Tuned Spacer 11# 1.4-1.1.3 ④ Pump Tuned Spacer 11# 14.79-33.2.9

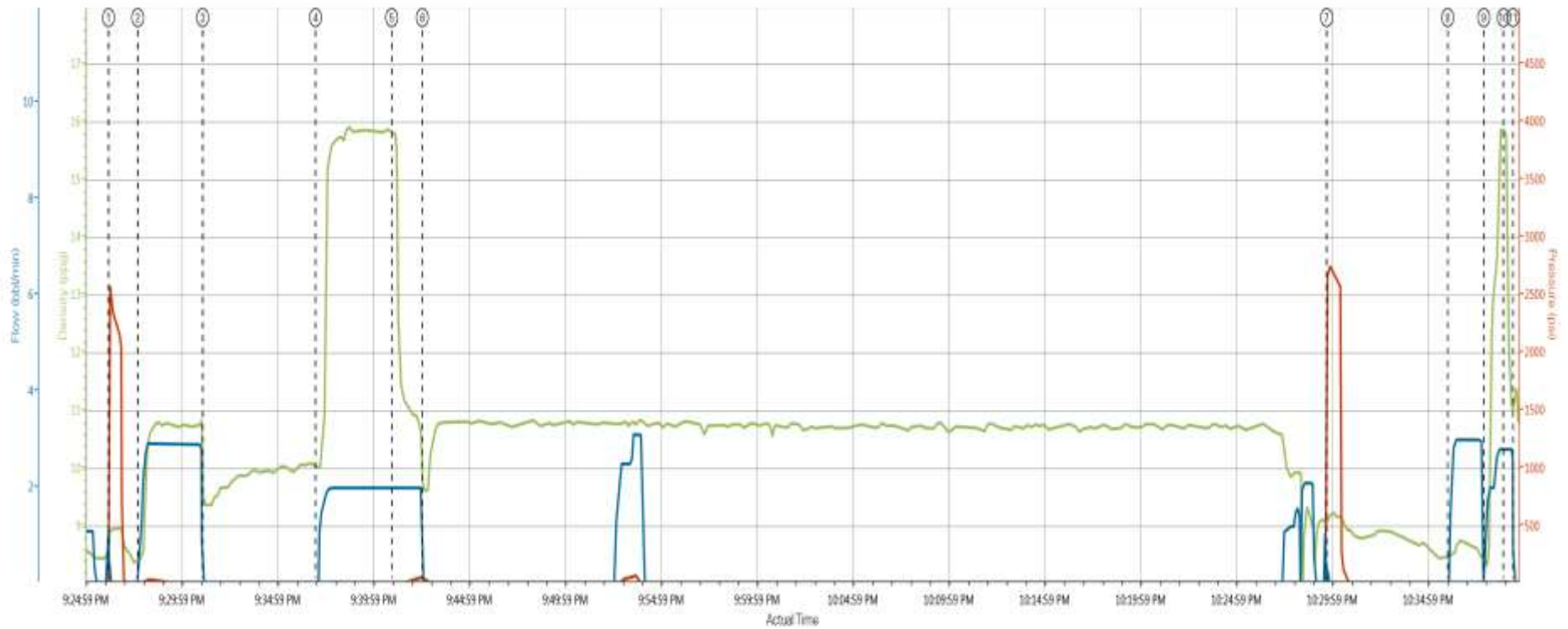
▲ HALLIBURTON | iCom® Service

Created: 2013-12-13 08:18:57, Version: 3.0.121

Edit

Plug #3 and #4

ANSCHUTZ STATE 5-62-25-0108BH (PLUG 3&4)



Flow Density (ppg) PS Pump Press (psi) Cont'd Pump Rate (bbl/min)

① Test Lines 11:01:26.12.0 ② Pump Halcom 15.0# 10.14.0 ③ Test Lines 11:01:27.52.0 ④ Pump Displacement 15.79:23.2.0
 ⑤ Pump Tuned Spacer 11# 11:01:45.6.1.1 ⑥ Pump Tuned Spacer 11# 15:05:12.2 ⑦ Pump Water 11:01:47.11.1.1 ⑧ Shutdown 11:01:47.0
 ⑨ Shutdown 9:21.3.0 ⑩ Shutdown 9:04.0 ⑪ Pump Halcom 15.0# 11:01:37.6.1.1

Service Supervisor Reports

Job Log

Date/Time	Chart #	Activity Code	Pump Rate	Cum Vol	Pump	Pressure (psig)	Comments
12/12/2013 00:30		Depart from Service Center or Other Site					SAFETY MEETING HELD FOR JOURNEY. LEFT THE YARD FOR SST 17
12/12/2013 22:00		Call Out					CREW CALLED OUT AT 2200 TO BE ON LOCATION AT 0200. CREW WAS CHRIS PICKELL, JOSEPH ROMERO, JACOB CARPENTER
12/13/2013 02:00		Arrive At Loc					ARRIVE AT LOCATION AT 0200. RIG WAS ABOUT TO BEGIN RUNNING IN THE HOLE WITH DRILL PIPE
12/13/2013 02:30		Rig-Up Equipment					HAZARD HUNT PERFORMED. WATER TEST DONE. RIG UP PLANNED AND EXECUTED
12/13/2013 06:00		Pre-Job Safety Meeting					SAFETY MEETING HELD WITH ALL PERSONEL ON LOCATION TO DISCUSS JOB SAFETY AND PROCEDURE
12/13/2013 06:25		Start Job					FIRST PLUG SET FROM 5600-5386 FT. SECOND PLUG FROM 880-666 FT. THIRD PLUG FROM 400-186 FT. FOURTH FROM 30 FT TO SURFACE
12/13/2013 06:39		Test Lines	1	1		2000.0	PRESSURE TEST LINES TO 2000 PSI. CHECK FOR VISIBLE LEAKS AND PRESSURE LOSS
12/13/2013 06:42		Pump Spacer 1	3	6.8		125.0	PUMP TUNED SPACER 11 PPG 6.74 CUFT/SK 50.43 GAL/SK
12/13/2013 06:55		Pump Cement	3	8.2		15.0	PUMP HALCEM 40 SKS 15.8 PPG 1.15 CUFT/SK 5 GAL/SK. RETARDED AND FRICTION REDUCER ADDED TO MIX WATER
12/13/2013 06:59		Pump Spacer 2	3	3.2		.0	PUMP TUNED SPACER 11 PPG 6.74 CUFT/SK 50.43 GAL/SK
12/13/2013 07:00		Pump Displacement	3	54		185.0	PUMP DISPLACEMENT USING 9.5 PPG WBM. CALCULATED DISPLACEMENT WAS 54.8 BBL
12/13/2013 07:17		Shutdown					RIG PULLED 5 STANDS THEN CIRCULATED. PIPE PULLED DRY
12/13/2013 18:06		Pump Spacer 1	3	8.5		100.0	PUMP TUNED SPACER 11 PPG 6.74 CUFT/SK 50.43 GAL/SK
12/13/2013 18:35		Test Lines	1	1		2000.0	PRESSURE TEST LINES TO 2000 PSI. CHECK FOR VISIBLE LEAKS AND PRESSURE LOSS
12/13/2013 18:46		Pump Cement	3	8.2		50.0	PUMP HALCEM 40 SKS 15.8 PPG 1.15 CUFT/SK 5 GAL/SK
12/13/2013 18:50		Pump Spacer 2	3	1.5		25.0	PUMP TUNED SPACER 11 PPG 6.74 CUFT/SK 50.43 GAL/SK
12/13/2013 18:51		Pump Displacement	3	6.8		75.0	PUMP DISPLACEMENT USING 9.5 PPG WBM. CALCULATED DISPLACEMENT WAS 3.7 BBL
12/13/2013 18:52		Shutdown					RIG PULLED 5 STANDS THEN CIRCULATED. PIPE PULLED DRY
12/13/2013 21:26		Test Lines	1	1		2000.0	PRESSURE TEST LINES TO 2000 PSI. CHECK FOR VISIBLE LEAKS AND PRESSURE LOSS
12/13/2013 21:27		Pump Spacer 1	3	8.5		15.0	PUMP TUNED SPACER 11 PPG 6.74 CUFT/SK 50.43 GAL/SK
12/13/2013 21:37		Pump Cement	3	8.2		5.0	PUMP HALCEM 40 SKS 15.8 PPG 1.15 CUFT/SK 5 GAL/SK
12/13/2013 21:41		Pump Spacer 2	3	1.5		5.0	PUMP TUNED SPACER 11 PPG 6.74 CUFT/SK 50.43 GAL/SK

HALLIBURTON

Date/Time	Chart #	Activity Code	Pump Rate	Cum Vol	Pump		Pressure (psig)		Comments
12/13/2013 21:42		Pump Displacement	3	1.6				25.0	PUMP DISPLACEMENT WATER TO CLEAR THE LINES. CALCULATED DISPLACEMENT WAS 1.6 BBL
12/13/2013 21:42		Shutdown							RIG PULLED ALL BUT 2 JOINTS AND SET US UP FOR THE NEXT PLUG
12/13/2013 22:29		Test Lines	1	1				2000.0	PRESSURE TEST LINES TO 2000 PSI. CHECK FOR VISIBLE LEAKS AND PRESSURE LOSS
12/13/2013 22:36		Pump Spacer 1	3	5				5.0	PUMPED WATER INSTEAD OF TUNED SPACER AT COMPANY MANS REQUEST
12/13/2013 22:37		Pump Cement	2	2				5.0	PUMP HALCEM 12 SKS 15.8 PPG 1.15 CUFT/SK 5 GAL/SK
12/13/2013 22:39		Pump Displacement	2	1.5				5.0	PUMP WATER TO CLEAR THE LINES
12/13/2013 22:39		Shutdown							RIG PULLED PIPE OUT OF HOLE
12/13/2013 22:40		End Job							
12/13/2013 22:45		Pre-Rig Down Safety Meeting							SAFETY MEETING HELD TO DISCUSS RIG DOWN SAFETY AND PROCEDURE
12/13/2013 22:50		Rig-Down Equipment							RIG DOWN ALL EQUIPMENT
12/14/2013 00:00		Depart Location for Service Center or Other Site							LEAVE LOCATION FOR THE YARD

HALLIBURTON

The Road to Excellence Starts with Safety

Sold To #: 343492	Ship To #: 3202177	Quote #:	Sales Order #: 900963897
-------------------	--------------------	----------	--------------------------

Customer: BILL BARRETT CORPORATION E-BILL	Customer Rep: Crow, Cecil
---	---------------------------

Well Name: Anschutz State	Well #: 5-62-25-0108BH	API/UWI #: 05-123-38353
---------------------------	------------------------	-------------------------

Field: WATTENBERG	City (SAP): KERSEY	County/Parish: Weld	State: Colorado
-------------------	--------------------	---------------------	-----------------

Contractor: SST	Rig/Platform Name/Num: SST 17
-----------------	-------------------------------

Job Purpose: Plug Back

Well Type: Development Well	Job Type: Plug Back
-----------------------------	---------------------

Sales Person: GREGORY, JON	Srv Supervisor: PICKELL, CHRISTOPHER	MBU ID Emp #: 396838
----------------------------	--------------------------------------	----------------------

Job Personnel

HES Emp Name	Exp Hrs	Emp #	HES Emp Name	Exp Hrs	Emp #	HES Emp Name	Exp Hrs	Emp #
CARPENTER, JACOB P	0.0	499500	PICKELL, CHRISTOPHER Lee	0.0	396838	ROMERO, JOSEPH M	0.0	512137

Equipment

HES Unit #	Distance-1 way	HES Unit #	Distance-1 way	HES Unit #	Distance-1 way	HES Unit #	Distance-1 way
11036298	68 mile	11605597	68 mile	11667703C	68 mile		

Job Hours

Date	On Location Hours	Operating Hours	Date	On Location Hours	Operating Hours	Date	On Location Hours	Operating Hours

TOTAL	Total is the sum of each column separately							
-------	--	--	--	--	--	--	--	--

Job

Job Times

Formation Name	Formation Depth (MD)	Top	Bottom	Form Type	Job depth MD	Water Depth	Perforation Depth (MD)	From	To	Called Out	Date	Time	Time Zone
				BHST	5600. ft						12 - Dec - 2013	22:00	MST
										On Location	13 - Dec - 2013	02:00	MST
										Job Started	13 - Dec - 2013	06:25	MST
										Job Completed	13 - Dec - 2013	22:40	MST
										Departed Loc	14 - Dec - 2013	00:00	MST

Well Data

Description	New / Used	Max pressure psig	Size in	ID in	Weight lbm/ft	Thread	Grade	Top MD ft	Bottom MD ft	Top TVD ft	Bottom TVD ft
4 XT 39 Drill Pipe	Unknown			4.			XT-38	.	5600.		
2.875" Tubing	Unknown		2.375	1.995	4.7			.	6868.		

Tools and Accessories

Type	Size	Qty	Make	Depth	Type	Size	Qty	Make	Depth	Type	Size	Qty	Make
Guide Shoe					Packer					Top Plug			
Float Shoe					Bridge Plug					Bottom Plug			
Float Collar					Retainer					SSR plug set			
Insert Float										Plug Container			
Stage Tool										Centralizers			

Miscellaneous Materials

Gelling Agt	Conc	Surfactant	Conc	Acid Type	Qty	Conc	%
Treatment Fld	Conc	Inhibitor	Conc	Sand Type	Size	Qty	

Fluid Data

Stage/Plug #: 1

HALLIBURTON

Fluid #	Stage Type	Fluid Name	Qty	Qty uom	Mixing Density lbm/gal	Yield ft ³ /sk	Mix Fluid Gal/sk	Rate bbl/min	Total Mix Fluid Gal/sk
1	TUNED SPACER III	TUNED SPACER III - SBM (483826)	40.00	bbl	11.	6.74	50.43	.0	
36.83 gal/bbl		FRESH WATER							
119.55 lbm/bbl		BARITE, 100 LB SK (100003680)							
2	PlugCem	PLUGCEM (TM) SYSTEM (452969)	132.0	sacks	15.8	1.15	5.0	4.0	5.0
5 Gal		FRESH WATER							
Calculated Values		Pressures		Volumes					
Displacement		Shut In: Instant		Lost Returns		Cement Slurry		Pad	
Top Of Cement		5 Min		Cement Returns		Actual Displacement		Treatment	
Frac Gradient		15 Min		Spacers		Load and Breakdown		Total Job	
Rates									
Circulating		Mixing		Displacement		Avg. Job			
Cement Left In Pipe	Amount	0 ft	Reason	Shoe Joint					
Frac Ring # 1 @	ID		Frac ring # 2 @	ID		Frac Ring # 3 @	ID		Frac Ring # 4 @
The Information Stated Herein Is Correct				Customer Representative Signature					