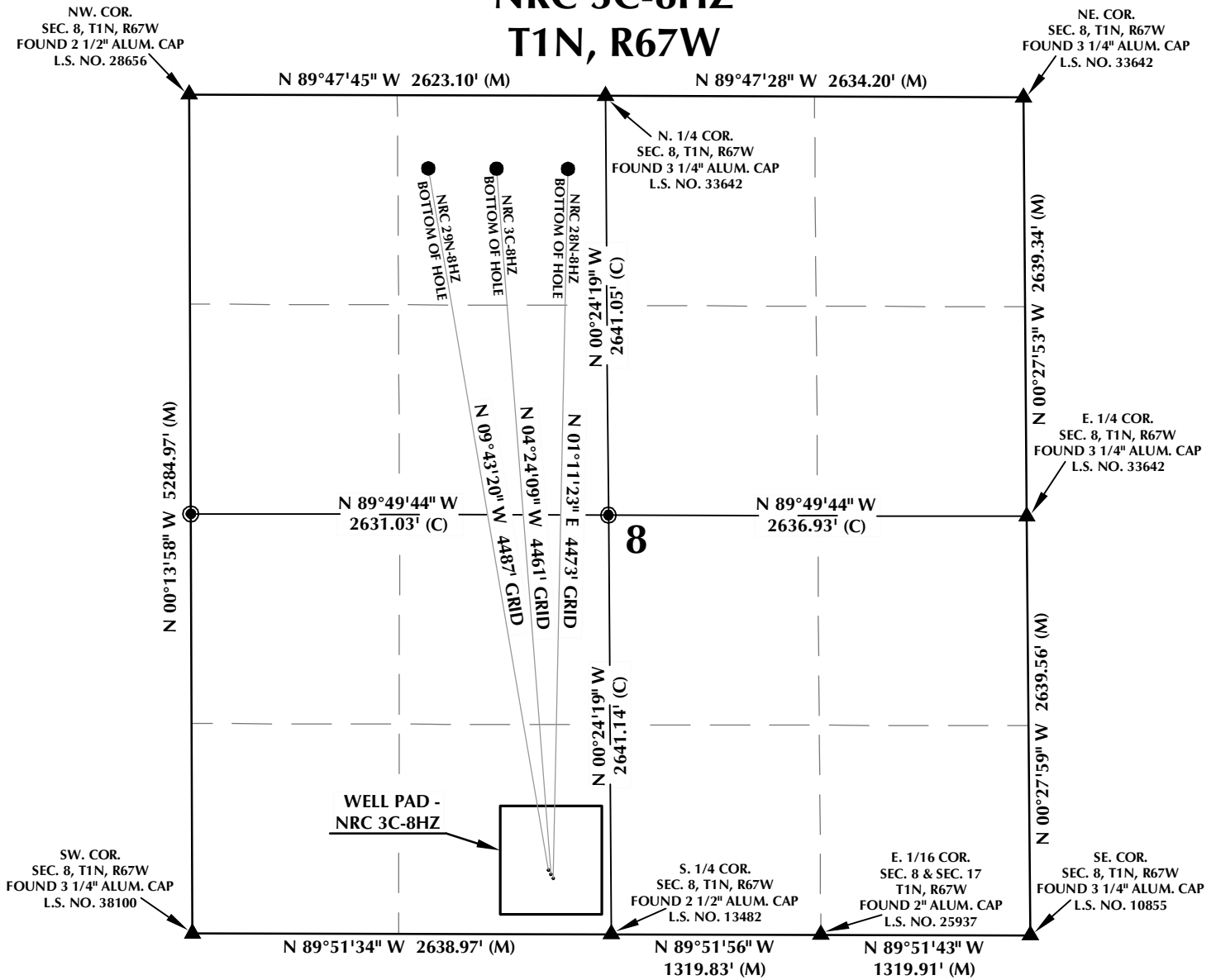


NRC 3C-8HZ T1N, R67W



WELL NOTES:

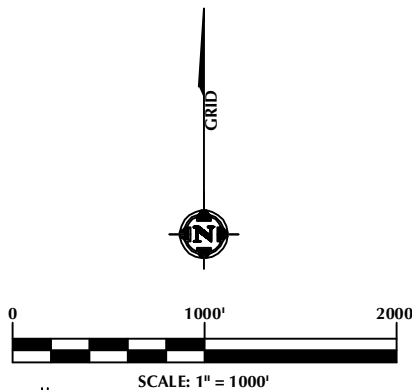
NRC 29N-8HZ
SURFACE: 402' FSL, 2245' FWL
BOTTOM HOLE: 460' FNL, 1505' FWL

NRC 3C-8HZ
SURFACE: 376' FSL, 2259' FWL
BOTTOM HOLE: 460' FNL, 1935' FWL

NRC 28N-8HZ
SURFACE: 350' FSL, 2274' FWL
BOTTOM HOLE: 460' FNL, 2385' FWL

NOTES:

- ▲ INDICATES FOUND SECTION CORNER
- INDICATES CALCULATED CORNER
- BASIS OF BEARING DERIVED FROM COLORADO COORDINATE SYSTEM 1983 NORTH ZONE UNLESS OTHERWISE NOTED.
- ALL MEASURED DISTANCES ARE GRID.
- COMBINED SCALE FACTOR: .99972585
- WELL FOOTAGES ARE MEASURED AT RIGHT ANGLES TO THE SECTION LINES.



WELL PAD - NRC 3C-8HZ

INTERFERENCE DIAGRAM
NRC 29N-8HZ,
NRC 3C-8HZ & NRC 28N-8HZ
LOCATED IN SECTION 8
T1N, R67W, 6TH P.M.
WELD COUNTY, COLORADO

**Kerr-McGee Oil &
Gas Onshore L.P.**
1099 18th Street
Denver, Colorado 80202



CONSULTING, LLC

SHERIDAN OFFICE
2155 North Main Street
Sheridan, Wyoming 82801
Phone 307-674-0609

LOVELAND OFFICE
1635 Foxtrail Drive, Suite 204
Loveland, Colorado 80538
Phone 970-776-4331

DRAFTED BY:	LMO	CHECKED BY:	BJR
DATE DRAFTED:	5/9/13	DATE SURVEYED:	4/22/13
REVISED:	10/11/13	FILE NAME:	13-33