

Anadarko Petroleum Corp.

Weld County, CO (NAD 83)

Sec. 8-T1N-R67W

NRC 3C-8HZ

Plan A

Plan: Rev A0 Permit

Sperry Drilling Services

Proposal Report

04 November, 2013

Well Coordinates: 1,265,013.44 N, 3,163,501.06 E (40° 03' 33.74" N, 104° 54' 57.15" W)

Ground Level: 5,052.00 usft

Local Coordinate Origin:

Viewing Datum:

TVDs to System:

North Reference:

Unit System:

Geodetic Scale Factor Applied

Version: 5000.1 Build: 70

Centered on Well NRC 3C-8HZ

RKB = 17' @ 5069.00usft (Drilling Rig)

N

True

API - US Survey Feet - Custom

HALLIBURTON

Project: Weld County, CO (NAD 83)
Site: Sec. 8-T1N-R67W
Well: NRC 3C-8HZ
Wellbore: Plan A
Design: Rev A0 Permit

Anadarko Petroleum Corp.

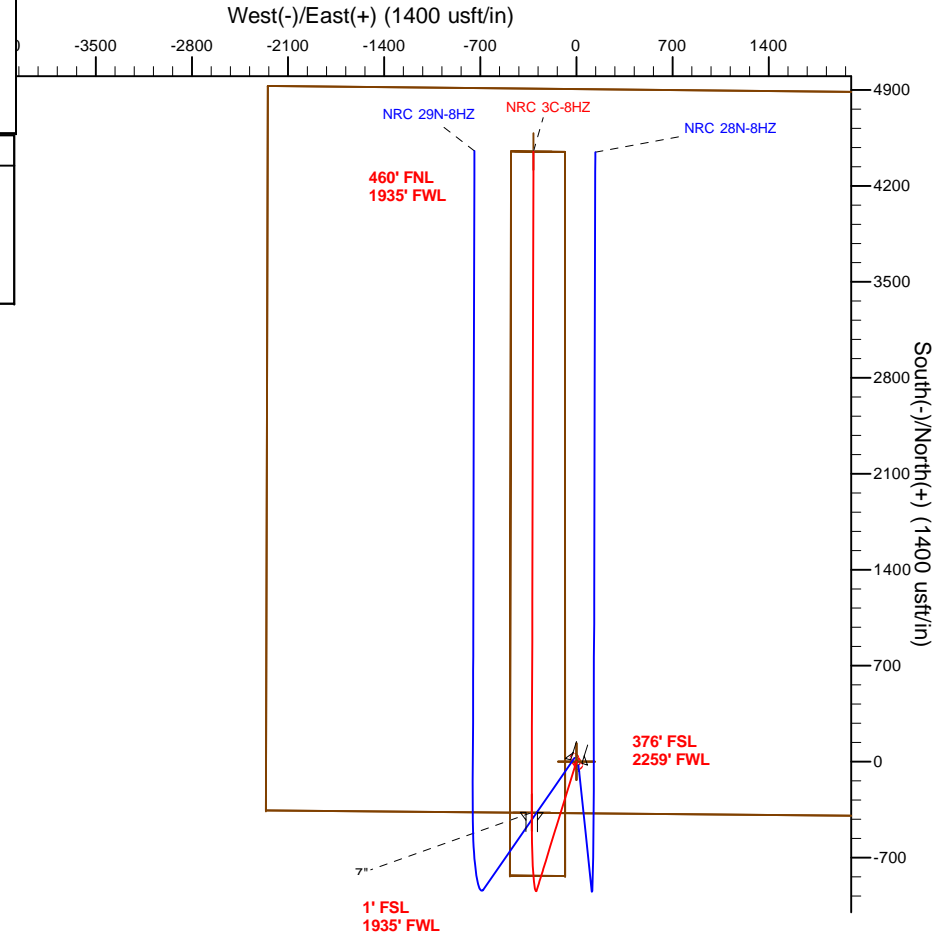
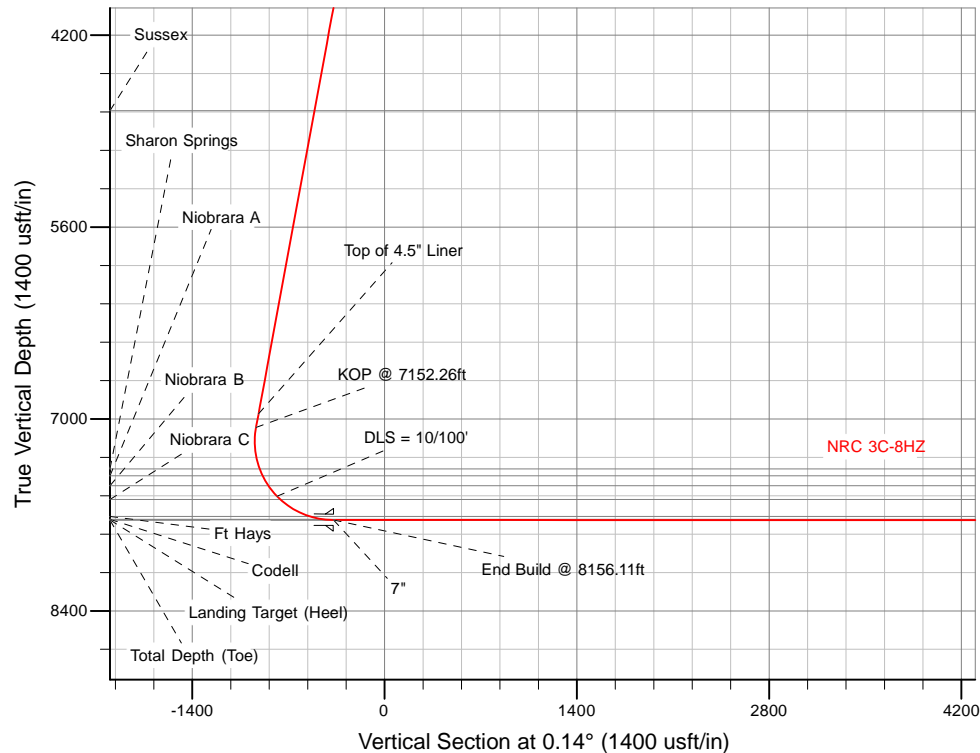
HALLIBURTON
Sperry Drilling

SECTION DETAILS

Sec	MD	Inc	Azi	TVD	+N/-S	+E/-W	Dleg	TFace	VSect	Target
1	0.00	0.00	0.00	0.00	0.00	0.00	0.00	0.00	0.00	
2	1700.00	0.00	0.00	1700.00	0.00	0.00	0.00	0.00	0.00	
3	2244.54	10.89	197.15	2241.27	-49.30	-15.22	2.00	197.15	-49.34	
4	7152.26	10.89	197.15	7060.59	-935.31	-288.69	0.00	0.00	-936.02	
5	8156.11	89.98	0.14	7736.00	-371.93	-325.27	10.00	162.70	-372.72	NRC 3C-8HZ_CP
6	12977.87	89.98	0.14	7738.00	4449.81	-313.17	0.00	0.00	4449.04	

WELLBORE TARGET DETAILS (LAT/LONG)

Name	TVD	+N/-S	+E/-W	Latitude	Longitude	Polygon
NRC 3C-8HZ_LD	0.00	0.00	0.00	40.059373	-104.915875	Polygon
NRC 3C-8HZ_SEC	0.00	0.00	0.00	40.059373	-104.915875	Polygon
NRC 3C-8HZ_SHL	0.00	0.00	0.00	40.059373	-104.915875	Polygon
NRC 3C-8HZ_CP	7736.00	-371.93	-325.27	40.058352	-104.917037	Point
NRC 3C-8HZ_BHL	7738.00	4449.81	-313.17	40.071588	-104.916994	Point



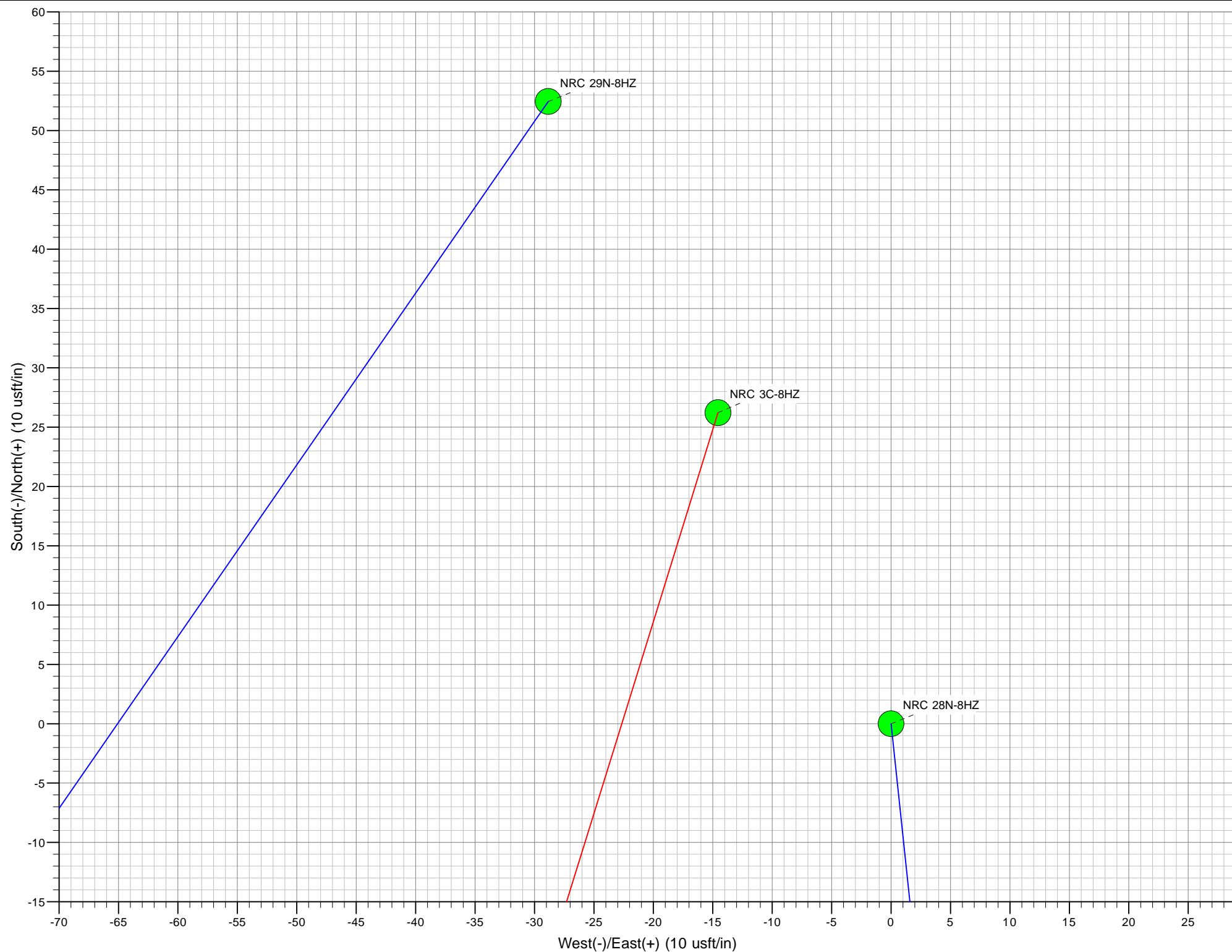
TVD	MD	
6962.39	7052.26	Top of 4.5" Liner
7060.59	7152.26	KOP @ 7152.26ft

WELL DETAILS: NRC 3C-8HZ

Ground Level: 5052.00
RKB = 17' @ 5069.00usft (Drilling Rig)

Plan: Rev A0 Permit (NRC 3C-8HZ/Plan A)

Created By: Clint Eshelman Date: 11/04/2013
Reviewed: _____ Date: _____



Plan Report for NRC 3C-8HZ - Rev A0 Permit

Measured Depth (usft)	Inclination (°)	Azimuth (°)	Vertical Depth (usft)	+N/-S (usft)	+E/-W (usft)	Vertical Section (usft)	Dogleg Rate (°/100usft)	Build Rate (°/100usft)	Turn Rate (°/100usft)	Toolface Azimuth (°)
0.00	0.00	0.00	0.00	0.00	0.00	0.00	0.00	0.00	0.00	0.00
NRC 3C-8HZ_SHL - NRC 3C-8HZ_LD - NRC 3C-8HZ_SEC										
100.00	0.00	0.00	100.00	0.00	0.00	0.00	0.00	0.00	0.00	0.00
200.00	0.00	0.00	200.00	0.00	0.00	0.00	0.00	0.00	0.00	0.00
300.00	0.00	0.00	300.00	0.00	0.00	0.00	0.00	0.00	0.00	0.00
400.00	0.00	0.00	400.00	0.00	0.00	0.00	0.00	0.00	0.00	0.00
500.00	0.00	0.00	500.00	0.00	0.00	0.00	0.00	0.00	0.00	0.00
570.00	0.00	0.00	570.00	0.00	0.00	0.00	0.00	0.00	0.00	0.00
Fox Hills Base										
600.00	0.00	0.00	600.00	0.00	0.00	0.00	0.00	0.00	0.00	0.00
620.00	0.00	0.00	620.00	0.00	0.00	0.00	0.00	0.00	0.00	0.00
9 5/8"										
700.00	0.00	0.00	700.00	0.00	0.00	0.00	0.00	0.00	0.00	0.00
800.00	0.00	0.00	800.00	0.00	0.00	0.00	0.00	0.00	0.00	0.00
900.00	0.00	0.00	900.00	0.00	0.00	0.00	0.00	0.00	0.00	0.00
1,000.00	0.00	0.00	1,000.00	0.00	0.00	0.00	0.00	0.00	0.00	0.00
1,100.00	0.00	0.00	1,100.00	0.00	0.00	0.00	0.00	0.00	0.00	0.00
1,200.00	0.00	0.00	1,200.00	0.00	0.00	0.00	0.00	0.00	0.00	0.00
1,300.00	0.00	0.00	1,300.00	0.00	0.00	0.00	0.00	0.00	0.00	0.00
1,400.00	0.00	0.00	1,400.00	0.00	0.00	0.00	0.00	0.00	0.00	0.00
1,500.00	0.00	0.00	1,500.00	0.00	0.00	0.00	0.00	0.00	0.00	0.00
1,600.00	0.00	0.00	1,600.00	0.00	0.00	0.00	0.00	0.00	0.00	0.00
1,700.00	0.00	0.00	1,700.00	0.00	0.00	0.00	0.00	0.00	0.00	0.00
Begin Nudge @ 1700.00ft										
1,800.00	2.00	197.15	1,799.98	-1.67	-0.51	-1.67	2.00	2.00	0.00	197.15
1,900.00	4.00	197.15	1,899.84	-6.67	-2.06	-6.67	2.00	2.00	0.00	0.00
2,000.00	6.00	197.15	1,999.45	-15.00	-4.63	-15.01	2.00	2.00	0.00	0.00
2,100.00	8.00	197.15	2,098.70	-26.64	-8.22	-26.66	2.00	2.00	0.00	0.00
2,200.00	10.00	197.15	2,197.47	-41.59	-12.84	-41.62	2.00	2.00	0.00	0.00
2,244.54	10.89	197.15	2,241.27	-49.30	-15.22	-49.34	2.00	2.00	0.00	0.00
End Nudge @ 2244.54ft										
2,300.00	10.89	197.15	2,295.73	-59.31	-18.31	-59.36	0.00	0.00	0.00	0.00
2,400.00	10.89	197.15	2,393.93	-77.37	-23.88	-77.43	0.00	0.00	0.00	0.00
2,500.00	10.89	197.15	2,492.13	-95.42	-29.45	-95.49	0.00	0.00	0.00	0.00
2,600.00	10.89	197.15	2,590.32	-113.48	-35.02	-113.56	0.00	0.00	0.00	0.00
2,700.00	10.89	197.15	2,688.52	-131.53	-40.60	-131.63	0.00	0.00	0.00	0.00
2,800.00	10.89	197.15	2,786.72	-149.58	-46.17	-149.69	0.00	0.00	0.00	0.00
2,900.00	10.89	197.15	2,884.92	-167.64	-51.74	-167.76	0.00	0.00	0.00	0.00
3,000.00	10.89	197.15	2,983.12	-185.69	-57.31	-185.83	0.00	0.00	0.00	0.00
3,100.00	10.89	197.15	3,081.32	-203.74	-62.89	-203.90	0.00	0.00	0.00	0.00
3,200.00	10.89	197.15	3,179.52	-221.80	-68.46	-221.96	0.00	0.00	0.00	0.00
3,300.00	10.89	197.15	3,277.72	-239.85	-74.03	-240.03	0.00	0.00	0.00	0.00
3,400.00	10.89	197.15	3,375.92	-257.90	-79.60	-258.10	0.00	0.00	0.00	0.00
3,500.00	10.89	197.15	3,474.11	-275.96	-85.17	-276.16	0.00	0.00	0.00	0.00
3,600.00	10.89	197.15	3,572.31	-294.01	-90.75	-294.23	0.00	0.00	0.00	0.00
3,700.00	10.89	197.15	3,670.51	-312.06	-96.32	-312.30	0.00	0.00	0.00	0.00
3,800.00	10.89	197.15	3,768.71	-330.12	-101.89	-330.36	0.00	0.00	0.00	0.00
3,900.00	10.89	197.15	3,866.91	-348.17	-107.46	-348.43	0.00	0.00	0.00	0.00
4,000.00	10.89	197.15	3,965.11	-366.22	-113.04	-366.50	0.00	0.00	0.00	0.00
4,100.00	10.89	197.15	4,063.31	-384.28	-118.61	-384.57	0.00	0.00	0.00	0.00
4,200.00	10.89	197.15	4,161.51	-402.33	-124.18	-402.63	0.00	0.00	0.00	0.00
4,300.00	10.89	197.15	4,259.71	-420.38	-129.75	-420.70	0.00	0.00	0.00	0.00
4,400.00	10.89	197.15	4,357.90	-438.44	-135.32	-438.77	0.00	0.00	0.00	0.00
4,500.00	10.89	197.15	4,456.10	-456.49	-140.90	-456.83	0.00	0.00	0.00	0.00
4,600.00	10.89	197.15	4,554.30	-474.54	-146.47	-474.90	0.00	0.00	0.00	0.00
4,700.00	10.89	197.15	4,652.50	-492.60	-152.04	-492.97	0.00	0.00	0.00	0.00
4,799.29	10.89	197.15	4,750.00	-510.52	-157.57	-510.91	0.00	0.00	0.00	0.00
Sussex										

Plan Report for NRC 3C-8HZ - Rev A0 Permit

Measured Depth (usft)	Inclination (°)	Azimuth (°)	Vertical Depth (usft)	+N/-S (usft)	+E/-W (usft)	Vertical Section (usft)	Dogleg Rate (°/100usft)	Build Rate (°/100usft)	Turn Rate (°/100usft)	Toolface Azimuth (°)
4,800.00	10.89	197.15	4,750.70	-510.65	-157.61	-511.03	0.00	0.00	0.00	0.00
4,900.00	10.89	197.15	4,848.90	-528.70	-163.19	-529.10	0.00	0.00	0.00	0.00
5,000.00	10.89	197.15	4,947.10	-546.76	-168.76	-547.17	0.00	0.00	0.00	0.00
5,100.00	10.89	197.15	5,045.30	-564.81	-174.33	-565.24	0.00	0.00	0.00	0.00
5,200.00	10.89	197.15	5,143.50	-582.86	-179.90	-583.30	0.00	0.00	0.00	0.00
5,300.00	10.89	197.15	5,241.69	-600.92	-185.48	-601.37	0.00	0.00	0.00	0.00
5,400.00	10.89	197.15	5,339.89	-618.97	-191.05	-619.44	0.00	0.00	0.00	0.00
5,500.00	10.89	197.15	5,438.09	-637.02	-196.62	-637.50	0.00	0.00	0.00	0.00
5,600.00	10.89	197.15	5,536.29	-655.08	-202.19	-655.57	0.00	0.00	0.00	0.00
5,700.00	10.89	197.15	5,634.49	-673.13	-207.76	-673.64	0.00	0.00	0.00	0.00
5,800.00	10.89	197.15	5,732.69	-691.19	-213.34	-691.70	0.00	0.00	0.00	0.00
5,900.00	10.89	197.15	5,830.89	-709.24	-218.91	-709.77	0.00	0.00	0.00	0.00
6,000.00	10.89	197.15	5,929.09	-727.29	-224.48	-727.84	0.00	0.00	0.00	0.00
6,100.00	10.89	197.15	6,027.29	-745.35	-230.05	-745.91	0.00	0.00	0.00	0.00
6,200.00	10.89	197.15	6,125.48	-763.40	-235.63	-763.97	0.00	0.00	0.00	0.00
6,300.00	10.89	197.15	6,223.68	-781.45	-241.20	-782.04	0.00	0.00	0.00	0.00
6,400.00	10.89	197.15	6,321.88	-799.51	-246.77	-800.11	0.00	0.00	0.00	0.00
6,500.00	10.89	197.15	6,420.08	-817.56	-252.34	-818.17	0.00	0.00	0.00	0.00
6,600.00	10.89	197.15	6,518.28	-835.61	-257.91	-836.24	0.00	0.00	0.00	0.00
6,700.00	10.89	197.15	6,616.48	-853.67	-263.49	-854.31	0.00	0.00	0.00	0.00
6,800.00	10.89	197.15	6,714.68	-871.72	-269.06	-872.37	0.00	0.00	0.00	0.00
6,900.00	10.89	197.15	6,812.88	-889.77	-274.63	-890.44	0.00	0.00	0.00	0.00
7,000.00	10.89	197.15	6,911.08	-907.83	-280.20	-908.51	0.00	0.00	0.00	0.00
7,052.26	10.89	197.15	6,962.39	-917.26	-283.12	-917.95	0.00	0.00	0.00	0.00
Top of 4.5" Liner										
7,100.00	10.89	197.15	7,009.28	-925.88	-285.78	-926.58	0.00	0.00	0.00	0.00
7,152.26	10.89	197.15	7,060.59	-935.31	-288.69	-936.02	0.00	0.00	0.00	0.00
KOP @ 7152.26ft										
7,200.00	6.49	209.81	7,107.78	-941.97	-291.36	-942.68	10.00	-9.22	26.50	162.70
7,300.00	5.42	323.79	7,207.49	-943.06	-296.97	-943.78	10.00	-1.06	113.98	150.18
7,400.00	14.71	347.77	7,305.87	-926.79	-302.47	-927.53	10.00	9.29	23.98	36.48
7,459.98	20.61	351.54	7,363.00	-908.90	-305.64	-909.64	10.00	9.82	6.28	12.78
Sharon Springs										
7,500.00	24.56	353.07	7,399.95	-893.66	-307.68	-894.41	10.00	9.89	3.84	9.19
7,515.55	26.11	353.55	7,414.00	-887.06	-308.45	-887.81	10.00	9.91	3.07	7.77
Niobrara A										
7,598.97	34.39	355.43	7,486.00	-845.26	-312.40	-846.02	10.00	9.94	2.25	7.34
Niobrara B										
7,600.00	34.50	355.45	7,486.85	-844.68	-312.45	-845.44	10.00	9.95	1.76	5.71
7,700.00	44.46	356.86	7,563.94	-781.32	-316.63	-782.09	10.00	9.96	1.41	5.69
DLS = 10/100'										
7,731.78	47.63	357.20	7,586.00	-758.48	-317.81	-759.25	10.00	9.97	1.09	4.60
Niobrara C										
7,800.00	54.43	357.84	7,628.88	-705.52	-320.09	-706.30	10.00	9.97	0.93	4.36
7,900.00	64.41	358.60	7,679.69	-619.58	-322.73	-620.37	10.00	9.98	0.76	3.96
7,982.94	72.69	359.14	7,710.00	-542.47	-324.24	-543.26	10.00	9.98	0.65	3.57
Ft Hays										
8,000.00	74.39	359.24	7,714.83	-526.11	-324.47	-526.90	10.00	9.98	0.61	3.37
8,080.54	82.43	359.72	7,731.00	-447.28	-325.18	-448.07	10.00	9.98	0.59	3.34
Codell										
8,100.00	84.37	359.83	7,733.24	-427.95	-325.26	-428.74	10.00	9.98	0.57	3.25
8,156.11	89.98	0.14	7,736.00	-371.93	-325.27	-372.72	10.00	9.98	0.56	3.24
End Build @ 8156.11ft - Landing Target (Heel) - 7" - NRC 3C-8HZ_CP										
8,200.00	89.98	0.14	7,736.02	-328.04	-325.16	-328.83	0.00	0.00	0.00	3.22
8,300.00	89.98	0.14	7,736.06	-228.04	-324.91	-228.83	0.00	0.00	0.00	0.00
8,400.00	89.98	0.14	7,736.10	-128.04	-324.66	-128.83	0.00	0.00	0.00	0.00
8,500.00	89.98	0.14	7,736.14	-28.04	-324.41	-28.83	0.00	0.00	0.00	0.00
8,600.00	89.98	0.14	7,736.18	71.96	-324.16	71.17	0.00	0.00	0.00	0.00

Plan Report for NRC 3C-8HZ - Rev A0 Permit

Measured Depth (usft)	Inclination (°)	Azimuth (°)	Vertical Depth (usft)	+N/-S (usft)	+E/-W (usft)	Vertical Section (usft)	Dogleg Rate (°/100usft)	Build Rate (°/100usft)	Turn Rate (°/100usft)	Toolface Azimuth (°)
8,700.00	89.98	0.14	7,736.23	171.96	-323.91	171.17	0.00	0.00	0.00	0.00
8,800.00	89.98	0.14	7,736.27	271.96	-323.66	271.17	0.00	0.00	0.00	0.00
8,900.00	89.98	0.14	7,736.31	371.96	-323.41	371.17	0.00	0.00	0.00	0.00
9,000.00	89.98	0.14	7,736.35	471.96	-323.15	471.17	0.00	0.00	0.00	0.00
9,100.00	89.98	0.14	7,736.39	571.96	-322.90	571.17	0.00	0.00	0.00	0.00
9,200.00	89.98	0.14	7,736.43	671.96	-322.65	671.17	0.00	0.00	0.00	0.00
9,300.00	89.98	0.14	7,736.47	771.96	-322.40	771.17	0.00	0.00	0.00	0.00
9,400.00	89.98	0.14	7,736.52	871.96	-322.15	871.17	0.00	0.00	0.00	0.00
9,500.00	89.98	0.14	7,736.56	971.96	-321.90	971.17	0.00	0.00	0.00	0.00
9,600.00	89.98	0.14	7,736.60	1,071.96	-321.65	1,071.17	0.00	0.00	0.00	0.00
9,700.00	89.98	0.14	7,736.64	1,171.95	-321.40	1,171.17	0.00	0.00	0.00	0.00
9,800.00	89.98	0.14	7,736.68	1,271.95	-321.15	1,271.17	0.00	0.00	0.00	0.00
9,900.00	89.98	0.14	7,736.72	1,371.95	-320.90	1,371.17	0.00	0.00	0.00	0.00
10,000.00	89.98	0.14	7,736.76	1,471.95	-320.65	1,471.17	0.00	0.00	0.00	0.00
10,100.00	89.98	0.14	7,736.81	1,571.95	-320.40	1,571.17	0.00	0.00	0.00	0.00
10,200.00	89.98	0.14	7,736.85	1,671.95	-320.14	1,671.17	0.00	0.00	0.00	0.00
10,300.00	89.98	0.14	7,736.89	1,771.95	-319.89	1,771.17	0.00	0.00	0.00	0.00
10,400.00	89.98	0.14	7,736.93	1,871.95	-319.64	1,871.17	0.00	0.00	0.00	0.00
10,500.00	89.98	0.14	7,736.97	1,971.95	-319.39	1,971.17	0.00	0.00	0.00	0.00
10,600.00	89.98	0.14	7,737.01	2,071.95	-319.14	2,071.17	0.00	0.00	0.00	0.00
10,700.00	89.98	0.14	7,737.06	2,171.95	-318.89	2,171.17	0.00	0.00	0.00	0.00
10,800.00	89.98	0.14	7,737.10	2,271.95	-318.64	2,271.17	0.00	0.00	0.00	0.00
10,900.00	89.98	0.14	7,737.14	2,371.95	-318.39	2,371.17	0.00	0.00	0.00	0.00
11,000.00	89.98	0.14	7,737.18	2,471.95	-318.14	2,471.17	0.00	0.00	0.00	0.00
11,100.00	89.98	0.14	7,737.22	2,571.95	-317.89	2,571.17	0.00	0.00	0.00	0.00
11,200.00	89.98	0.14	7,737.26	2,671.95	-317.64	2,671.17	0.00	0.00	0.00	0.00
11,300.00	89.98	0.14	7,737.30	2,771.95	-317.38	2,771.17	0.00	0.00	0.00	0.00
11,400.00	89.98	0.14	7,737.35	2,871.95	-317.13	2,871.17	0.00	0.00	0.00	0.00
11,500.00	89.98	0.14	7,737.39	2,971.95	-316.88	2,971.17	0.00	0.00	0.00	0.00
11,600.00	89.98	0.14	7,737.43	3,071.95	-316.63	3,071.17	0.00	0.00	0.00	0.00
11,700.00	89.98	0.14	7,737.47	3,171.95	-316.38	3,171.17	0.00	0.00	0.00	0.00
11,800.00	89.98	0.14	7,737.51	3,271.95	-316.13	3,271.17	0.00	0.00	0.00	0.00
11,900.00	89.98	0.14	7,737.55	3,371.95	-315.88	3,371.17	0.00	0.00	0.00	0.00
12,000.00	89.98	0.14	7,737.59	3,471.95	-315.63	3,471.17	0.00	0.00	0.00	0.00
12,100.00	89.98	0.14	7,737.64	3,571.95	-315.38	3,571.17	0.00	0.00	0.00	0.00
12,200.00	89.98	0.14	7,737.68	3,671.95	-315.13	3,671.17	0.00	0.00	0.00	0.00
12,300.00	89.98	0.14	7,737.72	3,771.95	-314.88	3,771.17	0.00	0.00	0.00	0.00
12,400.00	89.98	0.14	7,737.76	3,871.95	-314.62	3,871.17	0.00	0.00	0.00	0.00
12,500.00	89.98	0.14	7,737.80	3,971.95	-314.37	3,971.17	0.00	0.00	0.00	0.00
12,600.00	89.98	0.14	7,737.84	4,071.95	-314.12	4,071.17	0.00	0.00	0.00	0.00
12,700.00	89.98	0.14	7,737.88	4,171.95	-313.87	4,171.17	0.00	0.00	0.00	0.00
12,800.00	89.98	0.14	7,737.93	4,271.94	-313.62	4,271.17	0.00	0.00	0.00	0.00
12,900.00	89.98	0.14	7,737.97	4,371.94	-313.37	4,371.17	0.00	0.00	0.00	0.00
12,977.86	89.98	0.14	7,738.00	4,449.80	-313.17	4,449.03	0.00	0.00	0.00	0.00
Total Depth (Toe)										
12,977.87	89.98	0.14	7,738.00	4,449.81	-313.17	4,449.04	0.00	0.00	0.00	0.00
TD Well @ 12977.87ft - NRC 3C-8HZ_BHL										

Plan Report for NRC 3C-8HZ - Rev A0 Permit**Plan Annotations**

Measured Depth (usft)	Vertical Depth (usft)	Local Coordinates		Comment
		+N/-S (usft)	+E/-W (usft)	
1,700.00	1,700.00	0.00	0.00	Begin Nudge @ 1700.00ft
2,244.54	2,241.27	-49.30	-15.22	End Nudge @ 2244.54ft
7,052.26	6,962.39	-917.26	-283.12	Top of 4.5" Liner
7,152.26	7,060.59	-935.31	-288.69	KOP @ 7152.26ft
7,700.00	7,563.94	-781.32	-316.63	DLS = 10/100'
8,156.11	7,736.00	-371.93	-325.27	End Build @ 8156.11ft
12,977.87	7,738.00	4,449.81	-313.17	TD Well @ 12977.87ft

Vertical Section Information

Angle Type	Target	Azimuth (°)	Origin Type	Origin		Start TVD (usft)
				+N/_S (usft)	+E/-W (usft)	
User	No Target (Freehand)	0.14	Slot	0.00	0.00	0.00

Survey tool program

From (usft)	To (usft)	Survey/Plan	Survey Tool
0.00	8,156.11	Rev A0 Permit	MWD
8,156.11	12,977.87	Rev A0 Permit	MWD

Casing Details

Measured Depth (usft)	Vertical Depth (usft)	Name	Casing Diameter (")	Hole Diameter (")
620.00	620.00	9 5/8"	9-5/8	13-1/2
8,156.11	7,736.00	7"	7	8-3/4

Formation Details

Measured Depth (usft)	Vertical Depth (usft)	Name	Lithology	Dip (°)	Dip Direction (°)
570.00	570.00	Fox Hills Base		0.00	
4,799.29	4,750.00	Sussex		0.00	
7,459.98	7,363.00	Sharon Springs		0.00	
7,515.55	7,414.00	Niobrara A		0.00	
7,598.97	7,486.00	Niobrara B		0.00	
7,731.78	7,586.00	Niobrara C		0.00	
7,982.94	7,710.00	Ft Hays		0.00	
8,080.54	7,731.00	Codell		0.00	
8,156.11	7,736.00	Landing Target (Heel)		0.00	
12,977.86	7,738.00	Total Depth (Toe)		0.00	

Plan Report for NRC 3C-8HZ - Rev A0 Permit

Targets associated with this wellbore

Target Name	TVD (usft)	+N/-S (usft)	+E/-W (usft)	Shape
NRC 3C-8HZ_SHL	0.00	0.00	0.00	Point
NRC 3C-8HZ_LD	0.00	0.00	0.00	Polygon
NRC 3C-8HZ_SEC	0.00	0.00	0.00	Polygon
NRC 3C-8HZ_CP	7,736.00	-371.93	-325.27	Point
NRC 3C-8HZ_BHL	7,738.00	4,449.81	-313.17	Point

Directional Difficulty Index

Average Dogleg over Survey:	0.86 °/100usft	Maximum Dogleg over Survey:	10.00 °/100usft at 8,156.11 usft
Net Tortousity applicable to Plans:	0.86 °/100usft	Directional Difficulty Index:	6.256

Audit Info

North Reference Sheet for Sec. 8-T1N-R67W - NRC 3C-8HZ - Plan A

All data is in US Feet unless otherwise stated. Directions and Coordinates are relative to True North Reference.
 Vertical Depths are relative to RKB = 17' @ 5069.00usft (Drilling Rig). Northing and Easting are relative to NRC 3C-8HZ
 Coordinate System is US State Plane 1983, Colorado Northern Zone using datum North American Datum 1983, ellipsoid GRS 1980
 Projection method is Lambert Conformal Conic (2 parallel)
 Central Meridian is -105.50°, Longitude Origin:0° 0' 0.000 E°, Latitude Origin:40° 47' 0.000 N°
 False Easting: 3,000,000.00usft, False Northing: 1,000,000.00usft, Scale Reduction: 0.99996239

Grid Coordinates of Well: 1,265,013.44 usft N, 3,163,501.06 usft E
 Geographical Coordinates of Well: 40° 03' 33.74" N, 104° 54' 57.15" W
 Grid Convergence at Surface is: 0.38°

Based upon Minimum Curvature type calculations, at a Measured Depth of 12,977.87usft
 the Bottom Hole Displacement is 4,460.82usft in the Direction of 355.97° (True).
 Magnetic Convergence at surface is: -8.26° (24 October 2013, , BGGM2013)

