

T7N, R66W, 6th P.M.

GREAT WESTERN OIL & GAS COMPANY

1993 Private Alum.
Cap. #12242
0.6' Below Road Surface
Lat: 40.567328°
Long: 104.811686°
N88°46'14"E
1323.35' (Meas.)
N88°45'53"E
1323.50' (Meas.)
N88°45'45"E - 2646.49' (Meas.)

1993 Private Alum.
Cap. #10855
0.3' Below Road Surface
Lat: 40.567719°
Long: 104.792642°
Well location, LIND EE #20-022HN, located as shown in the SW 1/4 SW 1/4 of Section 20, T7N, R66W, 6th P.M., Weld County, Colorado.

BASIS OF ELEVATION

USGS COOPERATIVE BASE NETWORK CONTROL STATION, DESIGNATION 'VERMILYEA'. NGS DATA SHEET LISTS THE NAVD 88 ELEVATION AS BEING 5026 FEET

BASIS OF BEARINGS

BASIS OF BEARINGS IS A G.P.S. OBSERVATION.

| LINE TABLE | | |
|------------|-------------|---------|
| LINE | DIRECTION | LENGTH |
| L1 | N30°16'55"E | 287.29' |



LEGEND:

- = 90° SYMBOL
- = PROPOSED WELL HEAD.
- ▲ = SECTION CORNERS LOCATED.
- ◆ = PROPOSED ENTRY POINT
- = PROPOSED TARGET BOTTOM HOLE

CERTIFICATE

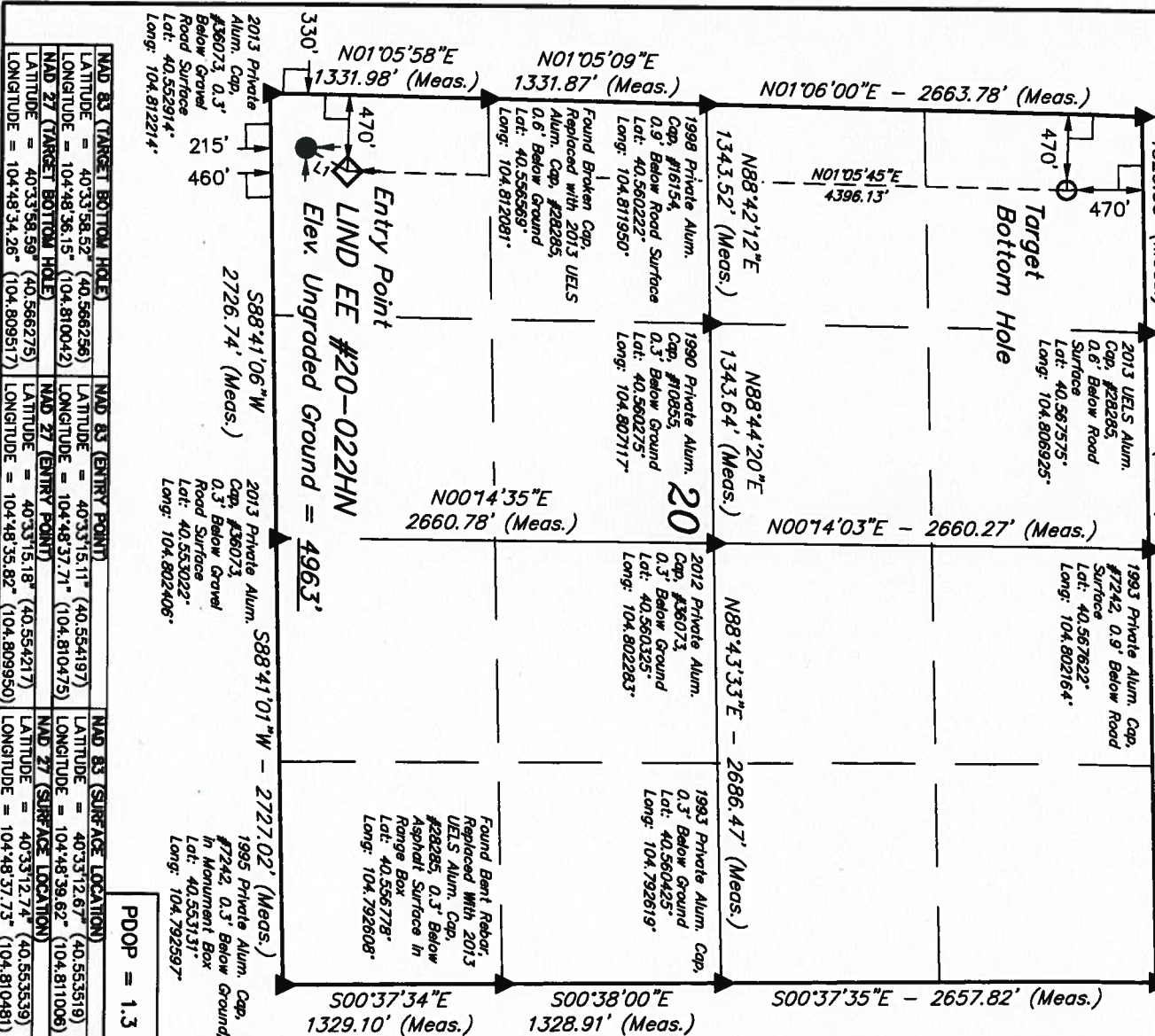
THIS IS TO CERTIFY THAT THE ABOVE DATA WAS PREPARED FROM FIELD NOTES OF ACTUAL SURVEY MADE BY ME OR UNDER MY SUPERVISION AND THAT THE SAME ARE TRUE AND CORRECT TO THE BEST OF MY KNOWLEDGE AND BELIEF.

REV: 09-13-13 J.S.

REGISTERED LAND SURVEYOR
REGISTRATION NO. 28285
STATE OF COLORADO
JUL 10 2013

UTAH ENGINEERING & LAND SURVEYING
85 SOUTH 200 EAST - VERNAL, UTAH 84078
(435) 789-1017

PDOP = 1.3



| NAD 83 (TARGET BOTTOM HOLE) | | NAD 83 (ENTRY POINT) | | NAD 83 (SURFACE LOCATION) | |
|-----------------------------|--------------|---------------------------|--------------|---------------------------|--------------|
| LATITUDE = 40°33'58.52" | (40.566256) | LATITUDE = 40°33'15.11" | (40.554197) | LATITUDE = 40°33'12.67" | (40.553519) |
| LONGITUDE = 104°48'36.15" | (104.810042) | LONGITUDE = 104°48'37.71" | (104.810475) | LONGITUDE = 104°48'39.62" | (104.811006) |
| NAD 27 (TARGET BOTTOM HOLE) | | | | | |
| LATITUDE = 40°33'58.59" | (40.566275) | LATITUDE = 40°33'15.18" | (40.554217) | LATITUDE = 40°33'12.74" | (40.553539) |
| LONGITUDE = 104°48'34.26" | (104.809517) | LONGITUDE = 104°48'35.82" | (104.809950) | LONGITUDE = 104°48'37.73" | (104.810481) |

| SCALE | DATE SURVEYED: | DATE DRAWN: |
|------------------|---------------------------------|-------------|
| 1" = 1000' | 07-26-13 | 08-01-13 |
| PARTY | REFERENCES | |
| D.N. G.W. H.K.W. | G.L.O. PLAT | |
| WEATHER | FILE | |
| HOT | GREAT WESTERN OIL & GAS COMPANY | |