

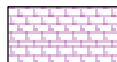
LOG created using L PLOT VH Version 3.0, April 18, 2013, Copyright (C) 1999-2009 Pason Systems Corp.

OPERATOR: NOBLE ENERGY INC
WELL: KUMMER PC LE 23-65-1HN
LOCATION: SEC 23 T8N R61W
COUNTY: WELD
STATE: COLORADO
SPOT: 2235' FSL; 255' FWL
ELEVATION: 4982' GL; 5006' KB
FIELD: WILDCAT
SPUD DATE: 04/06/2013
TD DATE: 04/08/2013
DATES LOGGED: 04/07/2013 - 04/14/2013
DEPTHS LOGGED: 800' - 6880' MD
LOGGERS: LAURA KELLOGG; CONOR PESICKA
DRILLING FLUID: LSND
DRILLING RIG: H&P 273
API: 05-123-36684
LOG TYPE: VERTICAL
SCALE: 1:240 (5 inches per 100 feet)
REMARKS: WELLSITE GEOLOGICAL SERVICES
 PROVIDED BY COLUMBINE LOGGING INC.

LITHOLOGIES



Chalk



Dolomitic Limestone



Limestone



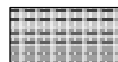
Marl



Sandstone



Shaly Sandstone



Silty Shale

MODIFIERS



Dolomitic

ENGINEERING SYMBOLS



Connection



Connection Gas



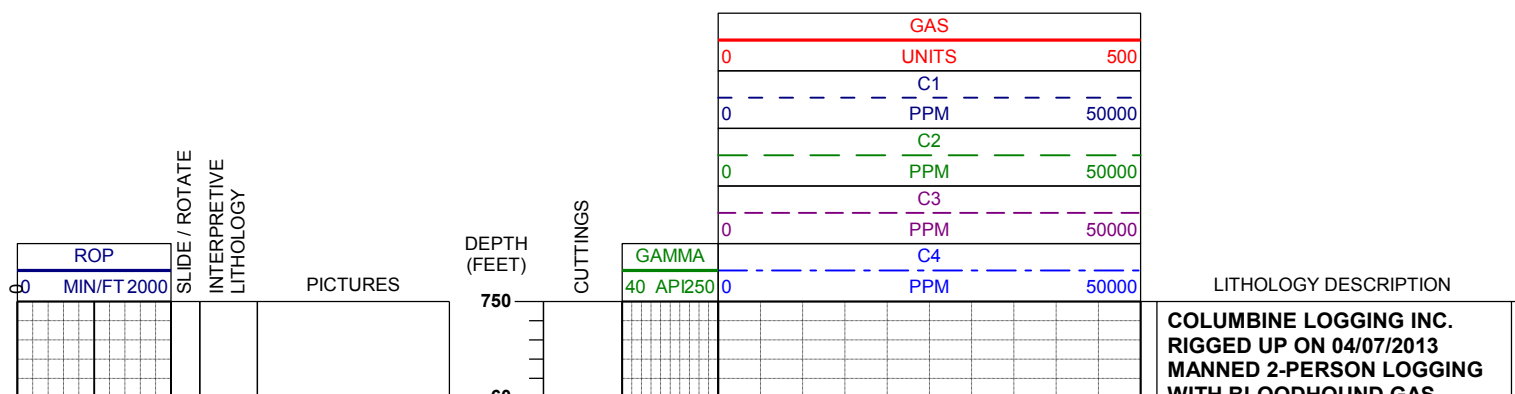
Arrow



Midnight Depth



Arrow

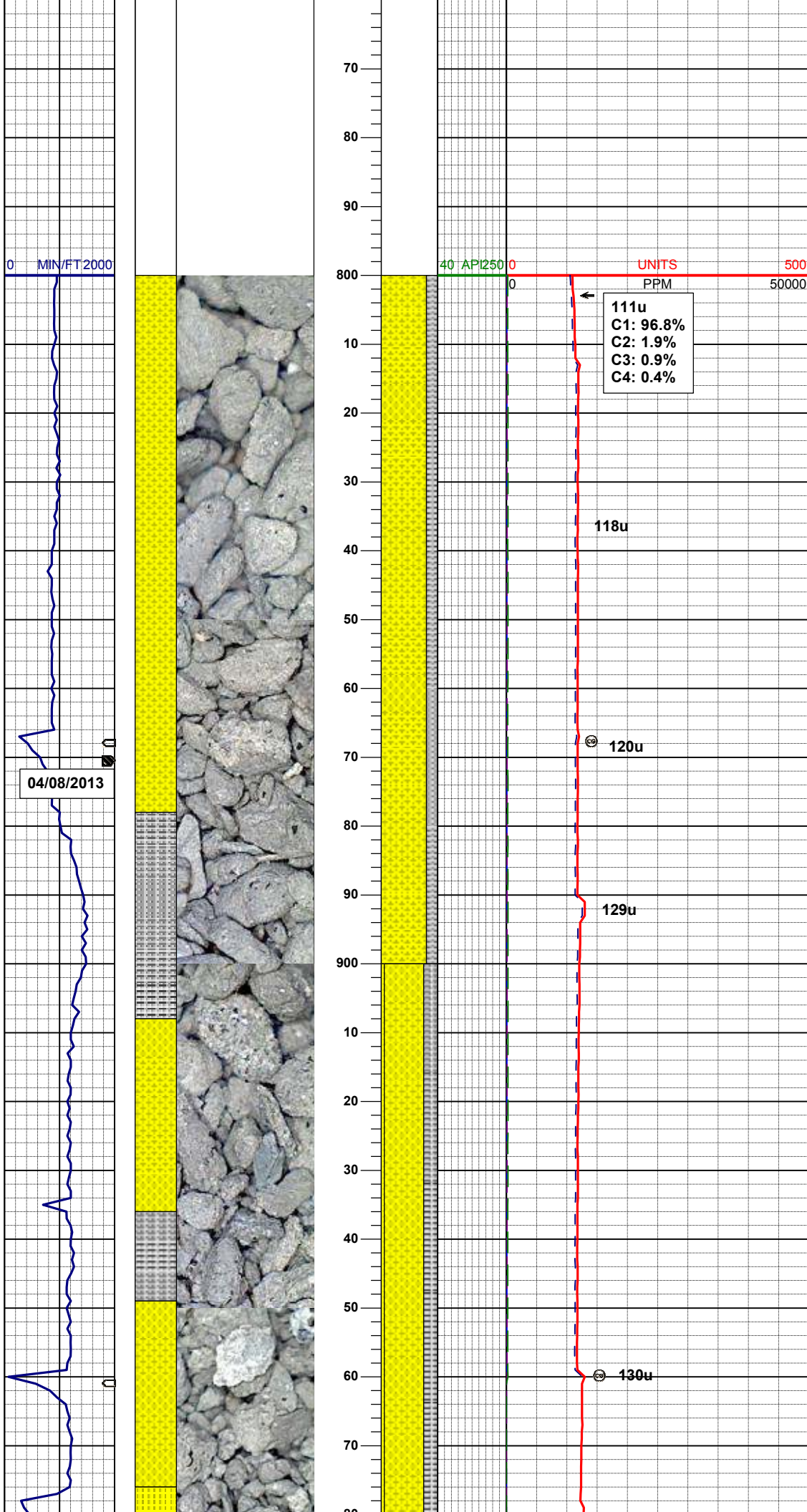


WHIT LOGGING SERVICE
CHROMATOGRAPH UNIT #0540
COLUMBINE BEGAN LOGGING
ON 04/07/2013

BHA BIT:
Smith 8.75", MDI516
Serial #: JG4833
Jets: 5x14

Drilled out of
Surface Casing
@ 11:22 PM
04/07/2013

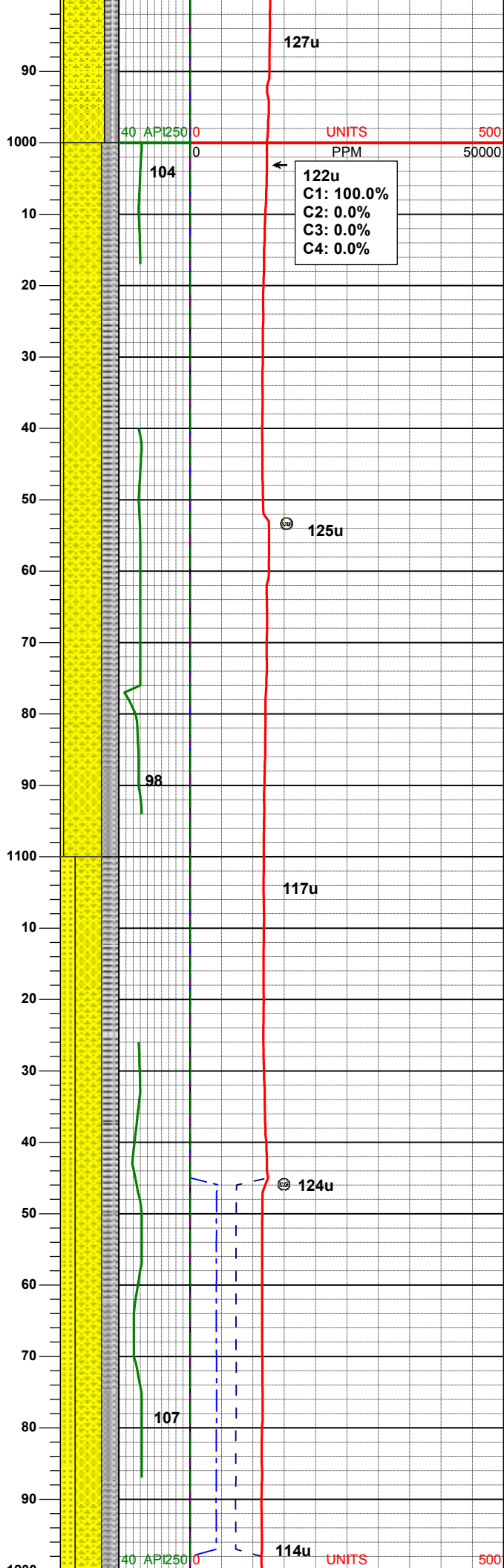
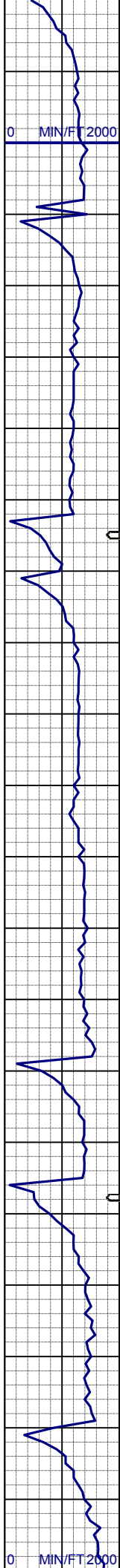
WT IN 8.40/ OUT 8.40
VIS IN 33/ OUT 33



SHYSS: wh, lt gy, tr dk lit frag, vfgr,
fri, brit clus, sbang-ang, smwt calc
cmt, v hi % cly mnrl
SLTYSH: gy-dkgy, ltbrn, fri, sbblky,
slty-gt tex, v sl calc

MD 910'
INC 0.4°
AZM 183.3°
TVD 909.98'

SHYSS: wh, lt gy, tr dk lit frag, vfgr,
fri, brit clus, sbang-ang, smwt calc
cmt, v hi % cly mnrl
SLTYSH: gy-dkgy, ltbrn, fri, sbblky,
slty-gt tex, v sl calc
SS: wh, ltgy, trnsl, tr dk lit frag, tr glau,
vfgr-fgr, v p srt, fri, sbang-ang, calc-
arg cmt



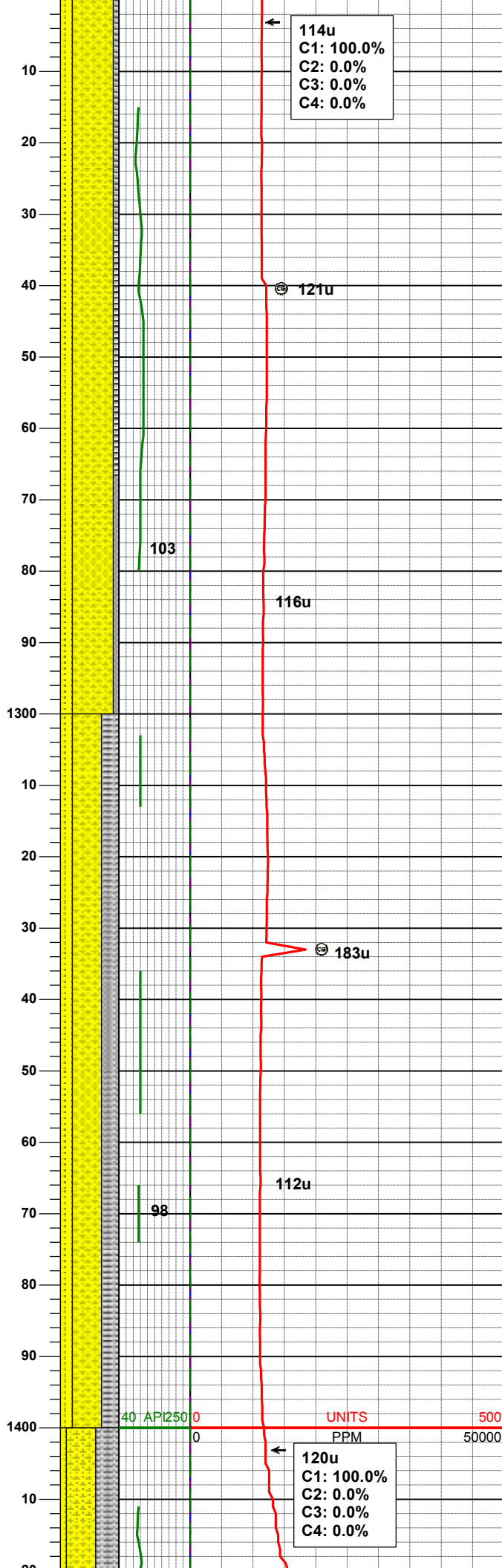
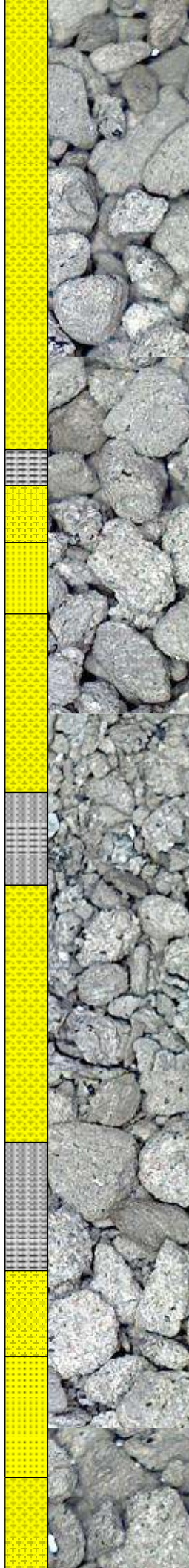
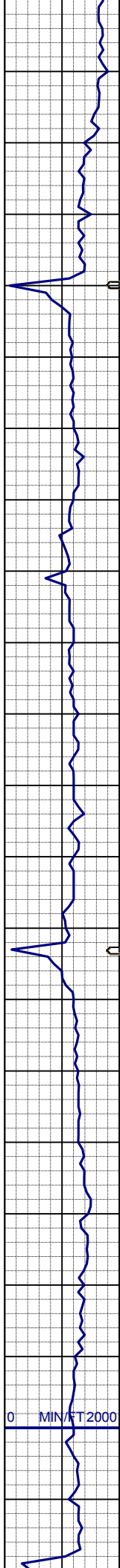
SHYSS: wh, lt gy, tr dk lit frag, vfgr, fri, brit clus, sbang-ang, smwt calc cmt, v hi % cly mnrl
SLTYSH: gy-dkgy, ltbrn, fri, sbblky, slty-gt tex, v sl calc
SS: wh, ltgy, trns, tr dk lit frag, tr glau, vfgr-fgr, v p srt, fri, sbang-ang, calc-arg cmt

MD	1096'
INC	0.7°
AZM	200.5°
TVD	1095.97'

WT IN 8.30/ OUT 8.30
VIS IN 26/ OUT 26

SHYSS: wh, lt gy, tr dk lit frag, vfgr, fri, brit clus, sbang-ang, smwt calc cmt, v hi % cly mnrl
SLTYSH: gy-dkgy, ltbrn, fri, sbblky, slty-gt tex, v sl calc
SS: wh, ltgy, trns, tr dk lit frag, tr glau, vfgr-fgr, v p srt, fri, sbang-ang, calc-arg cmt

MD	1189'
INC	0.7°
AZM	188.5°
TVD	1188.96'

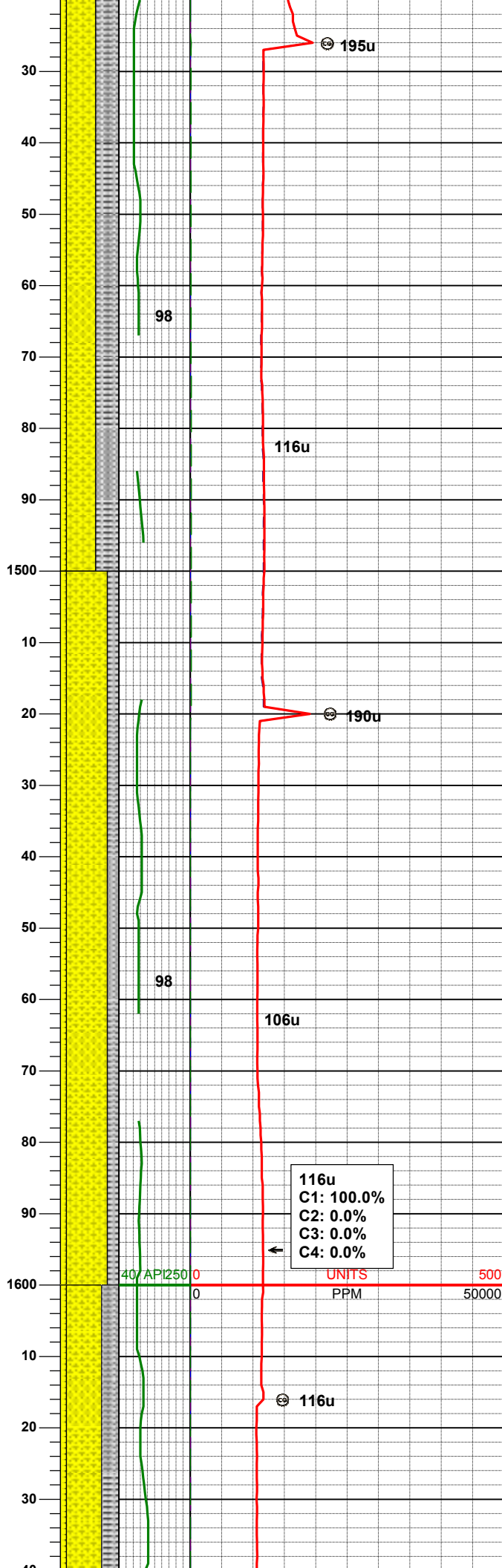
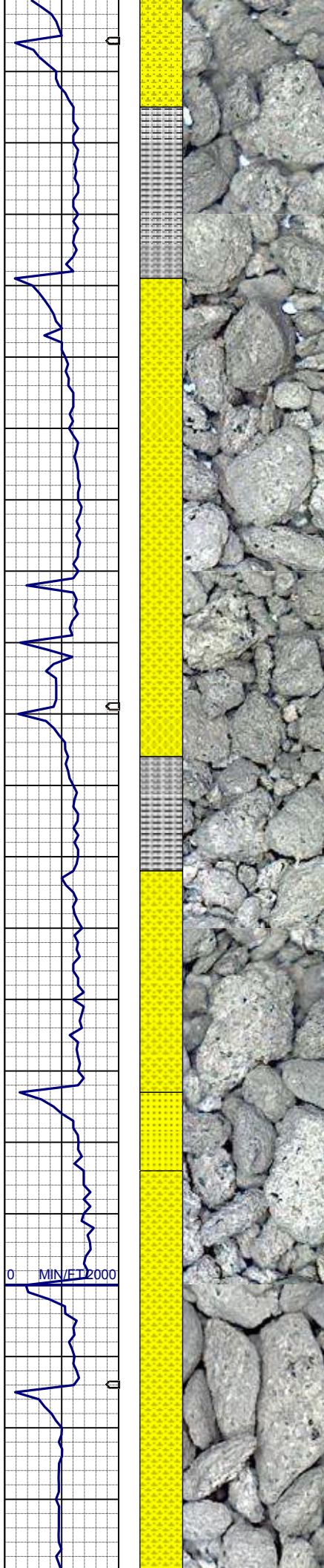


SHYSS: wh, lt gy, tr dk lit frag, vfgr, fri, brit clus, sbang-ang, smwt calc cmt, v hi % cly mnrl
SS: wh, ltgy, trns, tr dk lit frag, tr glau, vfgr-fgr, v p srt, fri, sbang-ang, calc-arg cmt
SLTYSH: gy-dkgy, ltbrn, fri, sbblky, slty-gt tex, v sl calc

MD 1282'
INC 0.5°
AZM 189.1°
TVD 1281.96'

SHYSS: wh, lt gy, tr dk lit frag, vfgr, fri, brit clus, sbang-ang, smwt calc cmt, v hi % cly mnrl
SLTYSH: gy-dkgy, ltbrn, fri, sbblky, slty-gt tex, v sl calc
SS: wh, ltgy, trns, tr dk lit frag, tr glau, vfgr-fgr, v p srt, fri, sbang-ang, calc-arg cmt

MD 1375'
INC 0.4°
AZM 227.7°
TVD 1374.95'



SHYSS: wh, lt gy, tr dk lit frag, vfgr,
fri, brit clus, sbang-ang, smwt calc
cmt, v hi % cly mnrl
SLTYSH: gy-dkgy, ltbrn, fri, sbblky,
silty-gt tex, v sl calc
SS: wh, ltgy, trns, tr dk lit frag, tr glau,
vfgr-fgr, v p srt, fri, sbang-ang, calc-
arg cmt

MD 1468'
INC 0.5°
AZM 197.5°
TVD 1467.95'

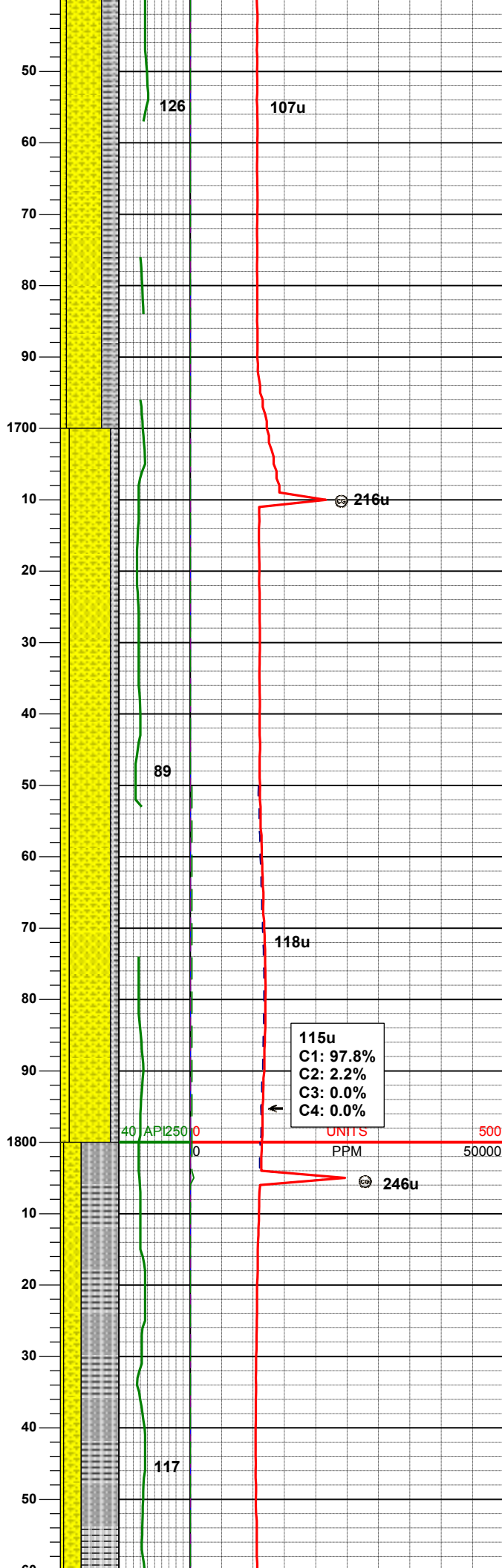
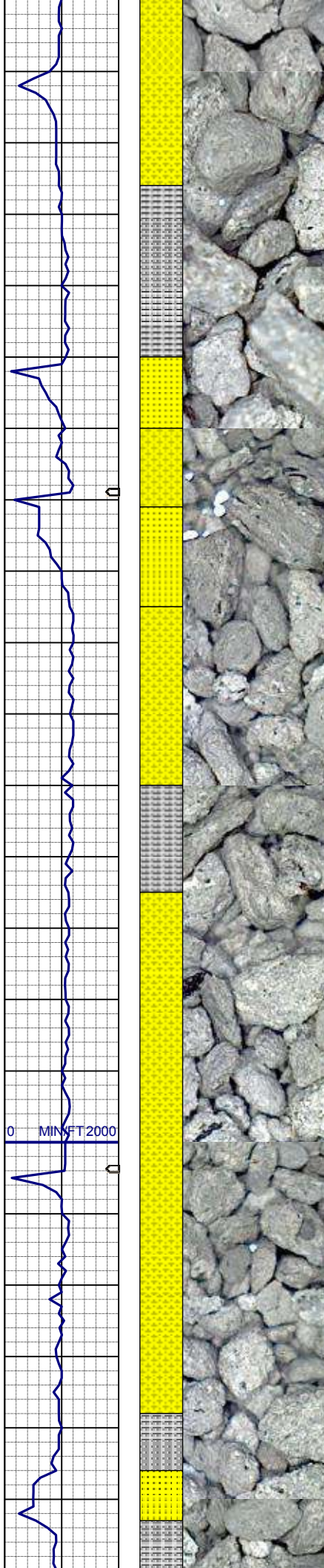
SHYSS: wh, lt gy, tr dk lit frag, vfgr,
fri, brit clus, sbang-ang, smwt calc
cmt, v hi % cly mnrl
SLTYSH: gy-dkgy, ltbrn, fri, sbblky,
silty-gt tex, v sl calc
SS: wh, ltgy, trns, tr dk lit frag, tr glau,
vfgr-fgr, v p srt, fri, sbang-ang, calc-
arg cmt, rr xl glau

MD 1563'
INC 0.5°
AZM 213.0°
TVD 1656.94'

116u
C1: 100.0%
C2: 0.0%
C3: 0.0%
C4: 0.0%

UNITS
PPM

WT IN 8.30/ OUT 8.30
VIS IN 26/ OUT 26



SHYSS: wh, lt gy, tr dk lit frag, vfgr, fri, brit clus, sbang-ang, smwt calc cmt, v hi % cly mnrl
SLTYSH: gy-dkgy, ltbrn, fri, sbbiky, slty-gt tex, v sl calc
SS: wh, ltgy, trns, tr dk lit frag, tr glau, vfgr-fgr, v p srt, fri, sbang-ang, calc-arg cmt

MD 1657'
INC 0.5°
AZM 213.0°
TVD 1656.93'

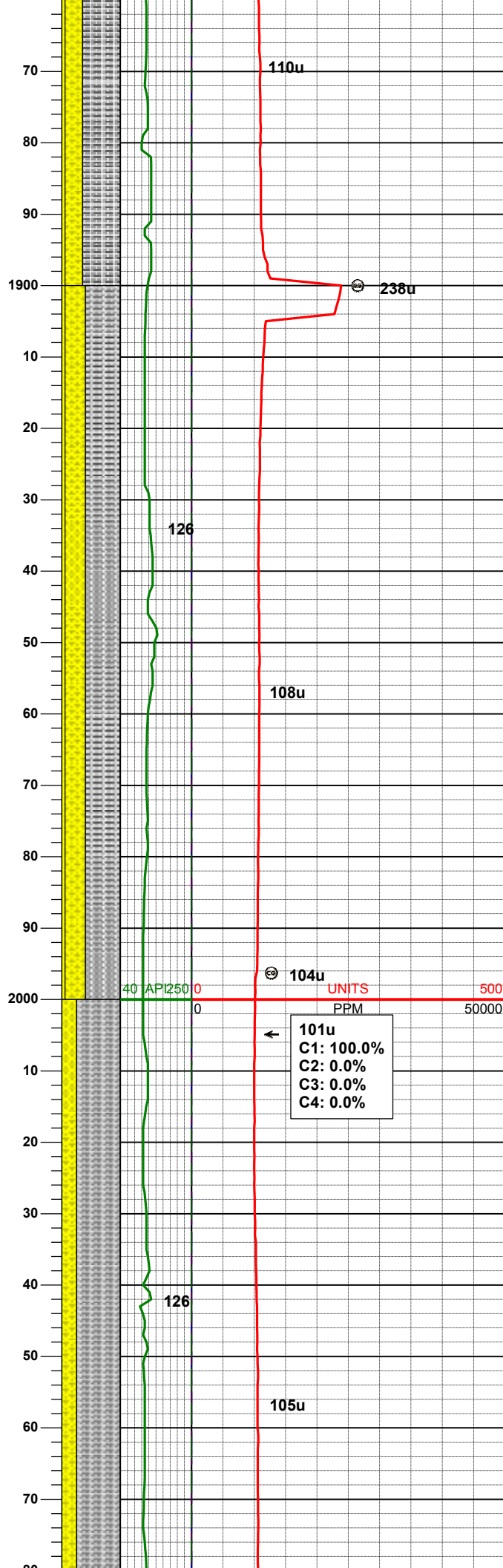
SHYSS: wh, lt gy, tr dk lit frag, vfgr, fri, brit clus, sbang-ang, smwt calc cmt, v hi % cly mnrl
SLTYSH: gy-dkgy, ltbrn, fri, sbbiky, slty-gt tex, v sl calc
SS: wh, ltgy, trns, tr dk lit frag, tr glau, vfgr-fgr, v p srt, fri, sbang-ang, calc-arg cmt

MD 1752'
INC 0.5°
AZM 213.7°
TVD 1751.93'

115u
C1: 97.8%
C2: 2.2%
C3: 0.0%
C4: 0.0%

MD 1847'
INC 0.4°
AZM 179.9°
TVD 1846.93'

SLTYSH: gy-dkgy, ltbrn, fri, sbbiky, slty-gt tex, v sl calc
SHYSS: wh, lt gy, tr dk lit frag, vfgr, fri, brit clus, sbang-ang, smwt calc cmt, v hi % cly mnrl
SS: wh, ltgy, trns, tr dk lit frag, tr glau, vfgr-fgr, v p srt, fri, sbang-ang, calc-arg cmt

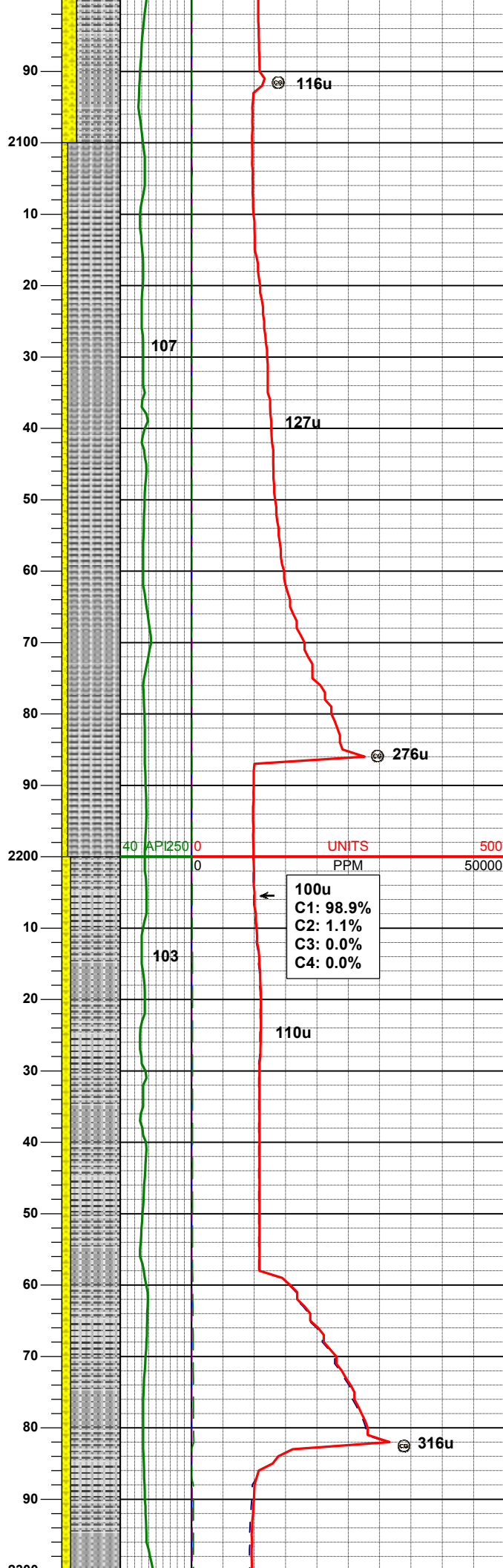
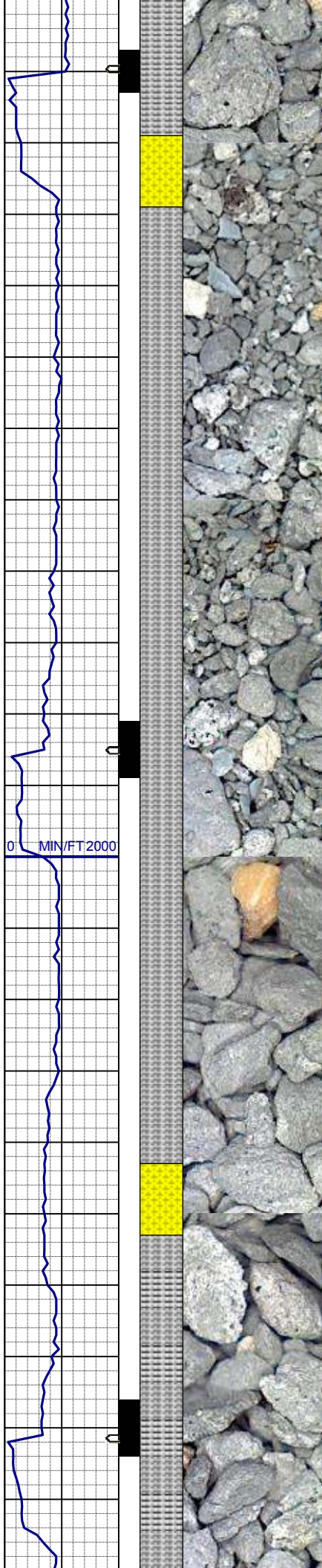


MD 1942'
INC 0.5°
AZM 166.4°
TVD 1941.93'

SLTYSH: gy-dkgy, ltbrn, fri, sbbiky,
silty-gt tex, v sl calc
SHYSS: wh, lt gy, tr dk lit frag, vfgr,
fri, brit clus, sbang-ang, smwt calc
cmt, v hi % cly mnrl
SS: wh, ltgy, trns, tr dk lit frag, tr glau,
vfgr-fgr, v p srt, fri, sbang-ang, calc-
arg cmt

MD 2037'
INC 1.6°
AZM 282.9°
TVD 2036.92'

SLTYSH: gy-dkgy, ltbrn, fri, sbbiky,
silty-gt tex, v sl calc
SHYSS: wh, lt gy, tr dk lit frag, vfgr,
fri, brit clus, sbang-ang, smwt calc
cmt, v hi % cly mnrl



MD 2131'
INC 3.5°
AZM 294.2°
TVD 2130.82'

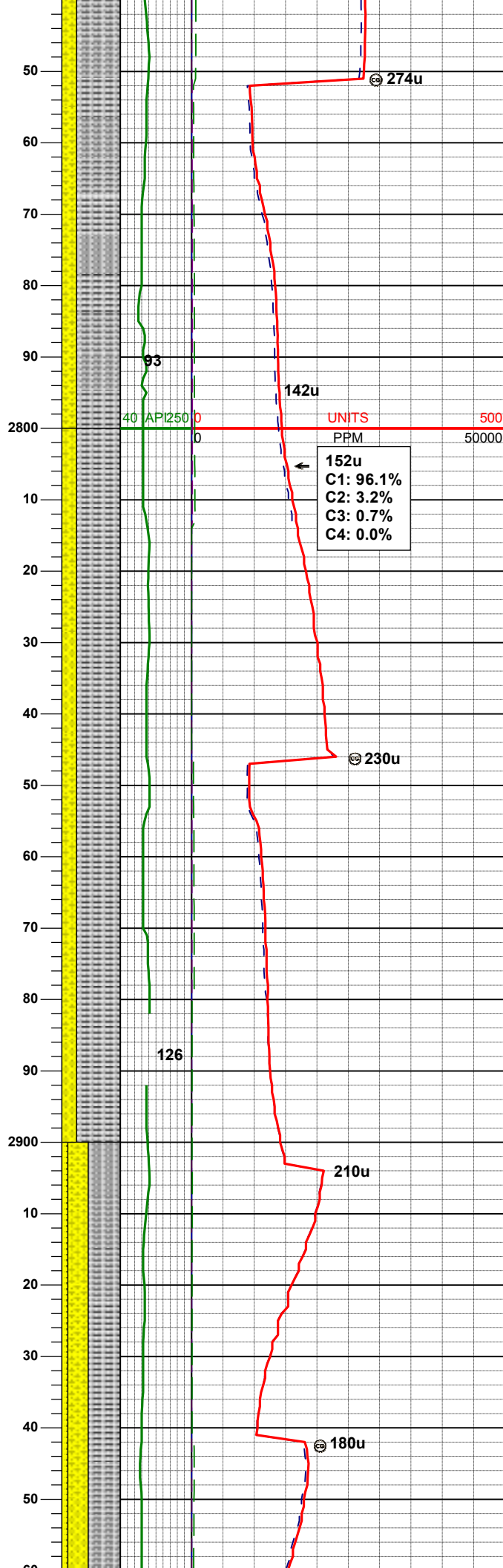
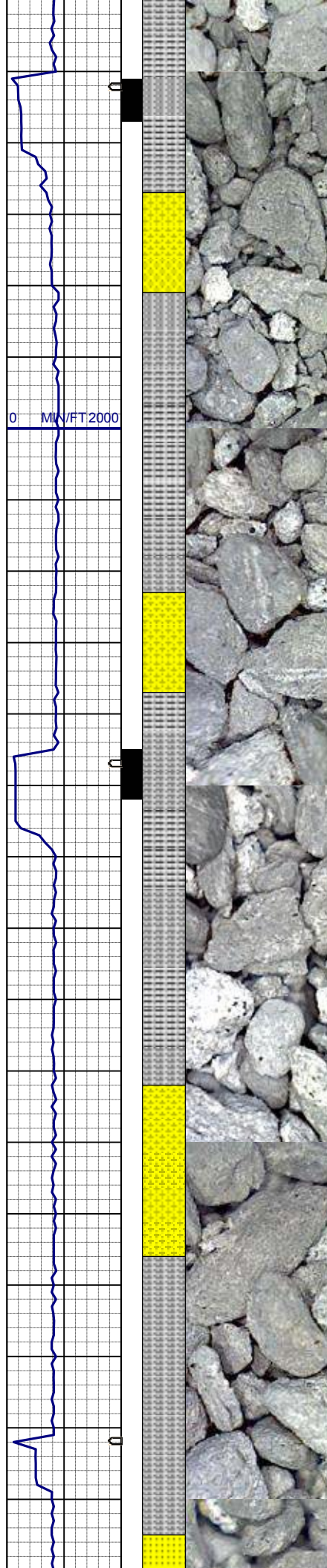
SLTYSH: gy-dkgy, ltbrn, fri, sbbly,
slty-gt tex, v sl calc
SHYSS: wh, lt gy, tr dk lit frag, vfgr,
fri, brit clus, sbang-ang, smwt calc
cmt, v hi % cly mnrl, grd to ss

WT IN 8.30/ OUT 8.30
VIS IN 26/ OUT 26

100u
C1: 98.9%
C2: 1.1%
C3: 0.0%
C4: 0.0%

MD 2226'
INC 4.7°
AZM 284.3°
TVD 2225.58'

SLTYSH: gy-dkgy, ltbrn, fri, sbbly,
slty-gt tex, v sl calc
SHYSS: wh, lt gy, tr dk lit frag, vfgr,
fri, brit clus, sbang-ang, smwt calc
cmt, v hi % cly mnrl



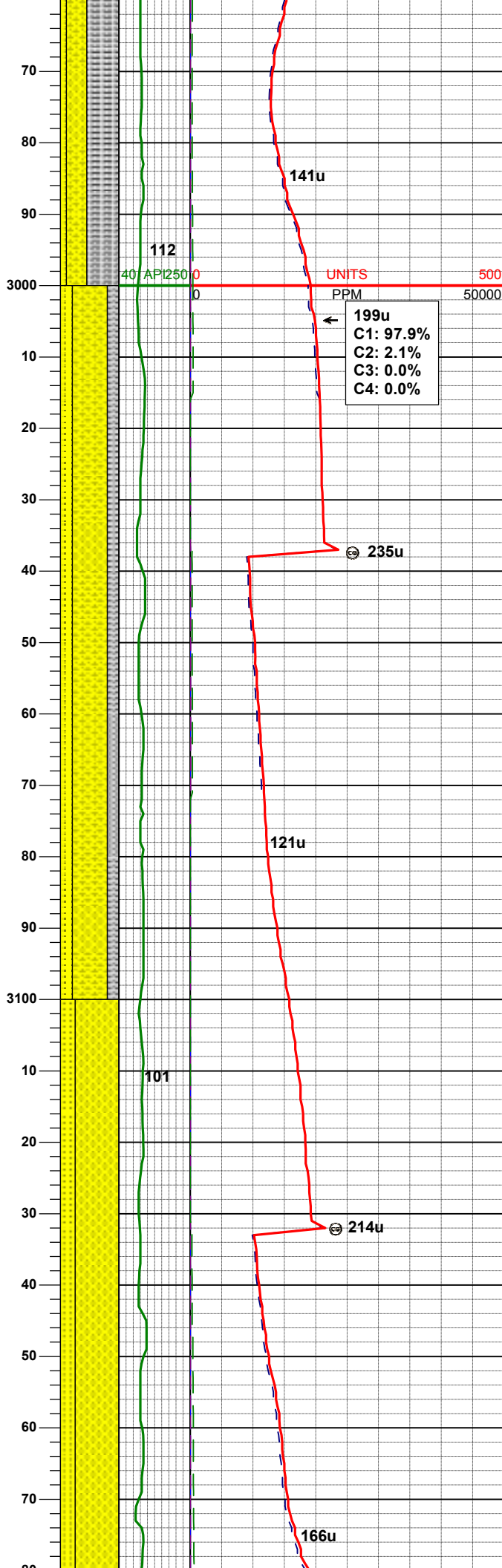
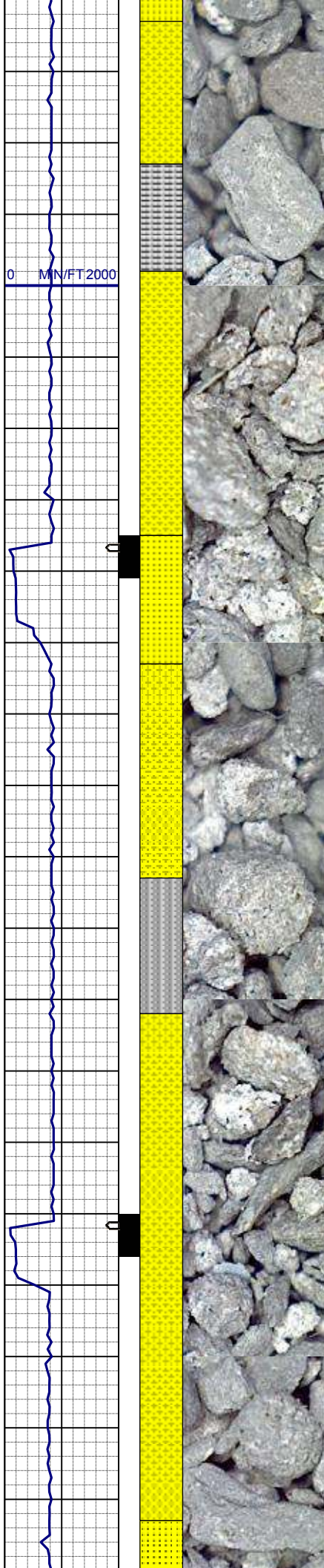
SLTYSH: gy-dkgy, ltbrn, fri, sbblky,
slty-gt tex
SHYSS: wh, lt gy, tr dk lit frag, vfgr,
fri, brit clus, sbang-ang, smwt calc
cmt, v hi % cly mnrl

MD 2795'
INC 8.6°
AZM 298.6°
TVD 2790.17'

SLTYSH: gy-dkgy, ltbrn, fri, sbblky,
slty-gt tex
SHYSS: wh, lt gy, tr dk lit frag, vfgr,
fri, brit clus, sbang-ang, smwt calc
cmt, v hi % cly mnrl

MD 2890'
INC 8.6°
AZM 288.7°
TVD 2884.11'

SLTYSH: gy-dkgy, ltbrn, fri, sbblky,
slty-gt tex
SHYSS: wh, lt gy, tr dk lit frag, vfgr,
fri, brit clus, sbang-ang, smwt calc
cmt, v hi % cly mnrl
SS: wh, ltgy, trsl, tr dk lit frag, occ
glau, vfgr-fgr, v p srt, fri, sbang-ang,
calc-arg cmt



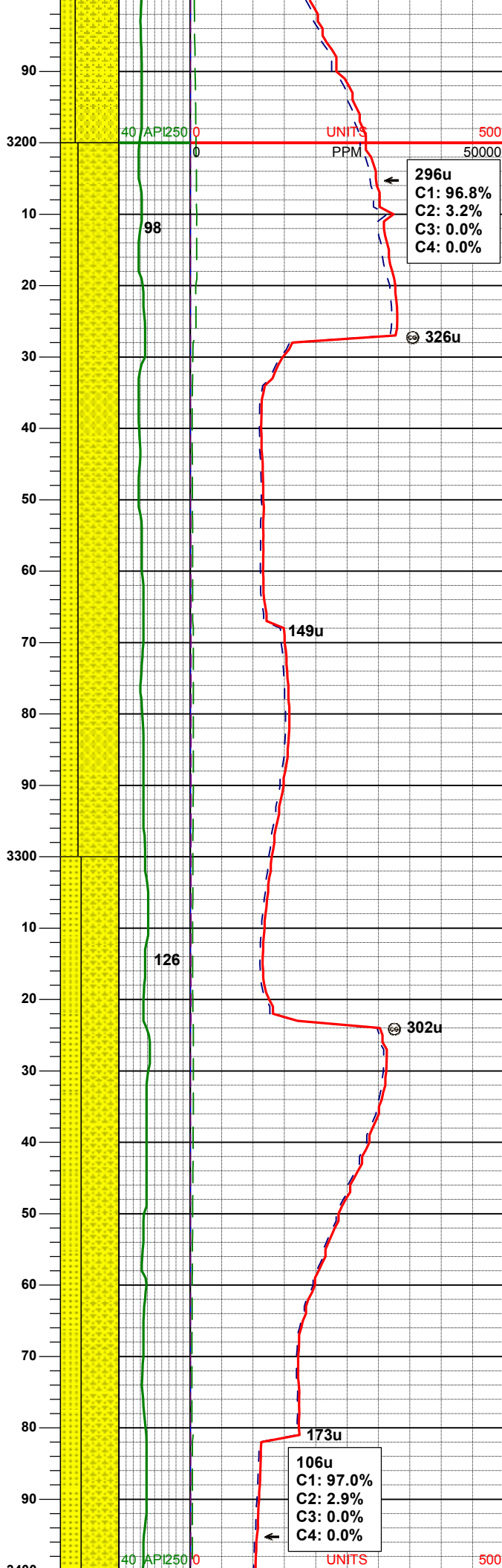
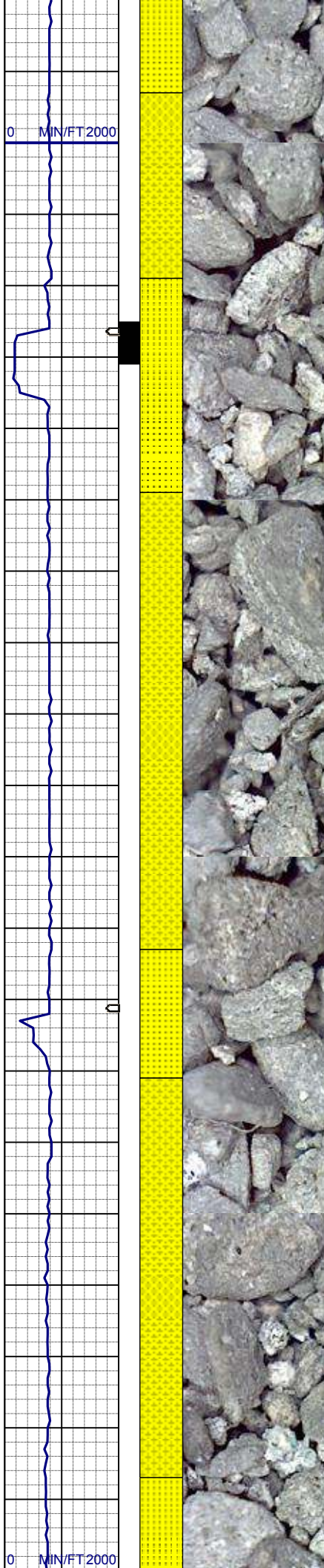
MD 2985'
INC 8.8°
AZM 285.2°
TVD 2978.01'

SHYSS: wh, lt gy, tr dk lit frag, vfgr,
fri, brit clus, sbang-ang, smwt calc
cmt, v hi % cly mnrl
SLTYSH: gy-dkgy, ltbrn, fri, sbbiky,
silty-gt tex
SS: wh, ltgy, trns, tr dk lit frag, occ
glau, vfgr-fgr, v p srt, fri, sbang-ang,
calc-arg cmt

MD 3080'
INC 7.6°
AZM 292.4°
TVD 3072.04'

SHYSS: wh, lt gy, tr dk lit frag, vfgr,
fri, brit clus, sbang-ang, smwt calc
cmt
SS: wh, ltgy, trns, tr dk lit frag, occ
glau, vfgr-fgr, v p srt, fri, sbang-ang,
calc-arg cmt

MD 3175'
INC 8.5°
AZM 296.6°
TVD 3166.11'

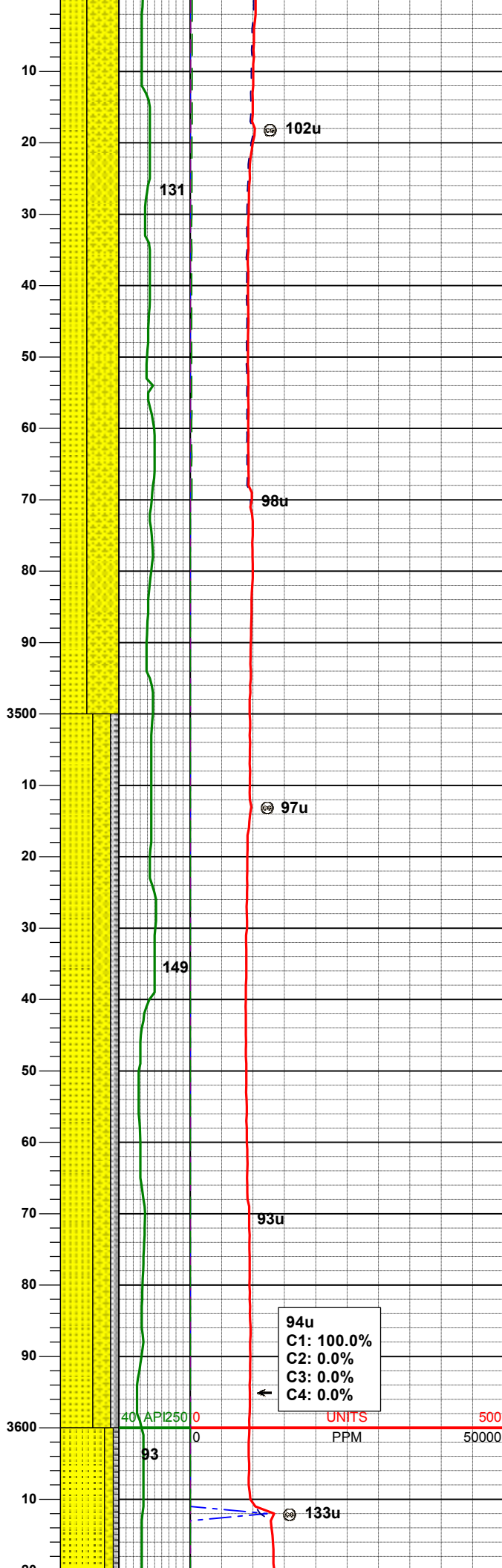
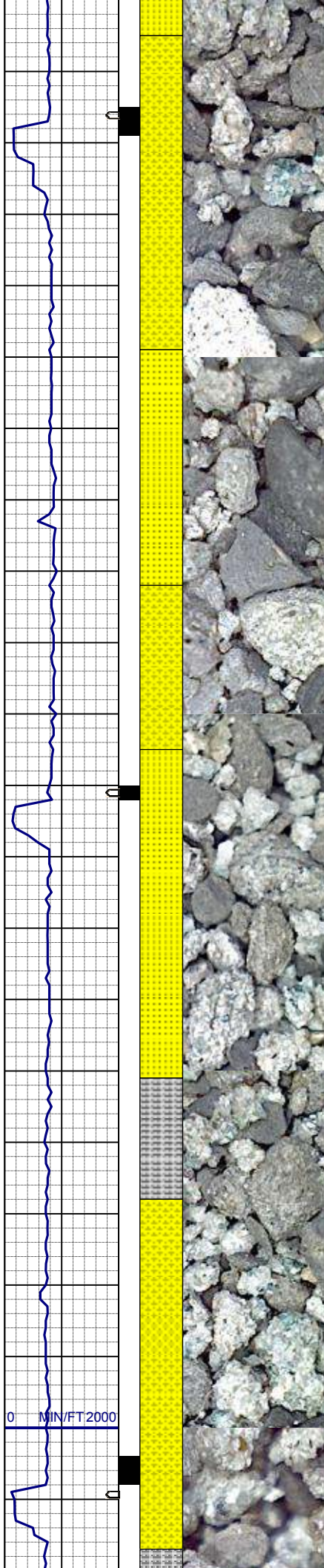


SHYSS: wh, lt gy, tr dk lit frag, vfgr,
fri, brit clus, sbang-ang, smwt calc
cmt
SS: wh, ltgy, trnsl, tr dk lit frag, occ
glau, vfgr-fgr, v p srt, fri, sbang-ang,
calc-arg cmt

MD 3270'
INC 8.4°
AZM 293.3°
TVD 3260.08'

SHYSS: wh, lt gy, tr dk lit frag, vfgr,
fri, brit clus, sbang-ang, smwt calc
cmt
SS: wh, ltgy, trnsl, tr dk lit frag, abnt
glau, vfgr-fgr, v p srt, fri, sbang-ang,
calc-arg cmt

MD 3365'
INC 7.4°
AZM 290.7°
TVD 3166.11'



SHYSS: wh, lt gy, tr dk lit frag, vfgr,
fri, brit clus, sbang-ang, smwt calc
cmt
SS: wh, ltgy, trns, tr dk lit frag, abnt
glau, vfgr-fgr, v p srt, fri, sbang-ang,
calc-arg cmt

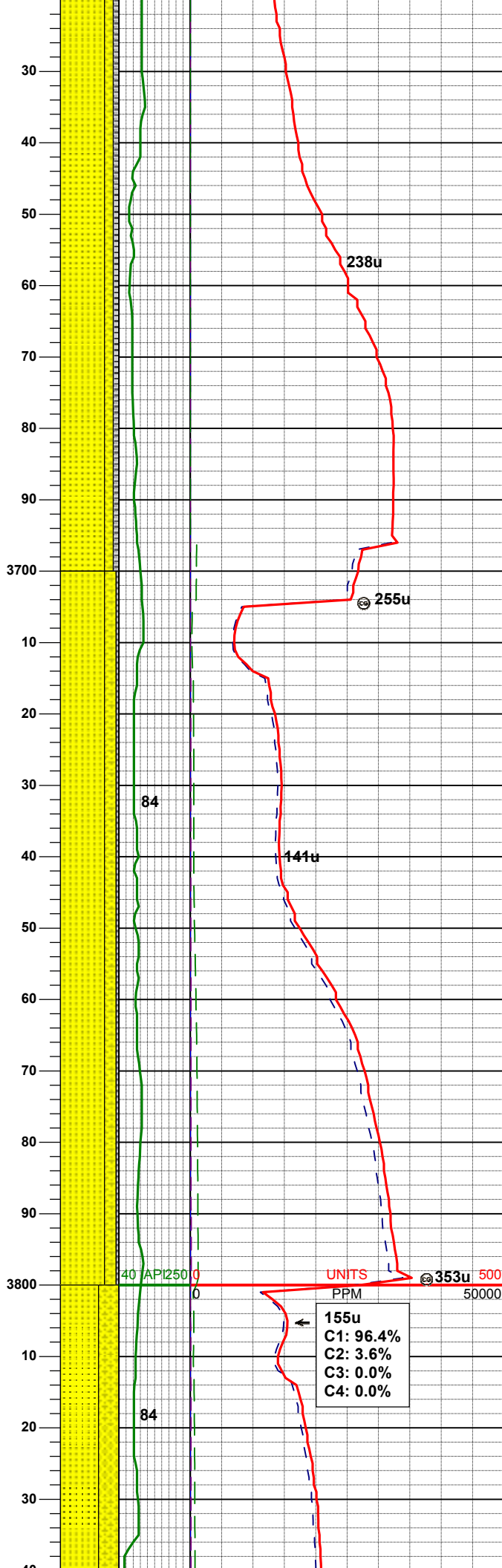
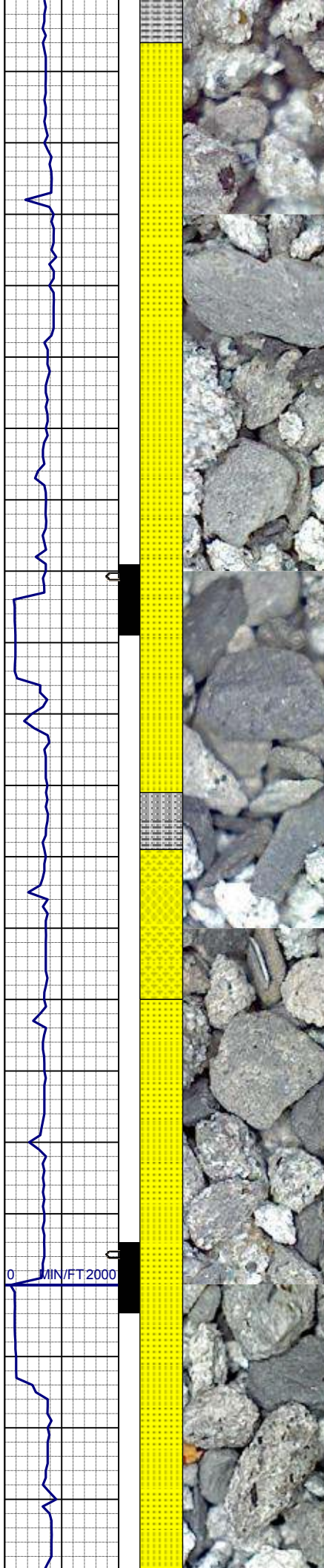
MD 3460'
INC 6.9°
AZM 294.4°
TVD 3448.44'

WT IN 8.30/ OUT 8.30
VIS IN 24/ OUT 24

SS: wh, ltgy, trns, tr dk lit frag, abnt
glau, vfgr-fgr, v p srt, fri, sbang-ang,
calc-arg cmt
SHYSS: wh, lt gy, tr dk lit frag, vfgr,
fri, brit clus, sbang-ang, smwt calc
cmt
SLTYSH: gy-dkgy, ltbrn, fri, sbbiky,
silty-gt tex

MD 3554'
INC 6.4°
AZM 296.1°
TVD 3541.80'

94u
C1: 100.0%
C2: 0.0%
C3: 0.0%
C4: 0.0%



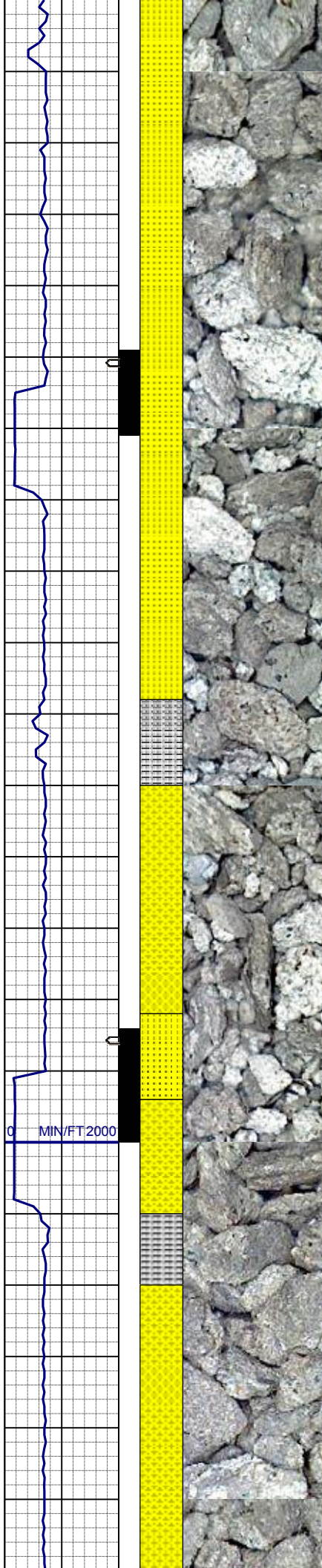
MD 3649'
INC 6.8°
AZM 295.1°
TVD 3636.18'

SS: wh, ltgy, trns, tr dk lit frag, abnt glau, vfgr-fgr, v p srt, fri, sbang-ang, calc-arg cmt
SHYSS: wh, lt gy, tr dk lit frag, vfgr, fri, brit clus, sbang-ang, smwt calc cmt
SLTYSH: gy-dkgy, ltbrn, fri, sbblky, slty-gt tex

MD 3744'
INC 5.5°
AZM 297.5°
TVD 3730.62'

SS: wh, ltgy, trns, tr dk lit frag, abnt glau, vfgr-fgr, v p srt, fri, sbang-ang, calc-arg cmt
SHYSS: wh, lt gy, tr dk lit frag, vfgr, fri, brit clus, sbang-ang, smwt calc cmt
SLTYSH: gy-dkgy, ltbrn, fri, sbblky, slty-gt tex

MD 3839'
INC 4.3°
AZM 292.2°
TVD 3825.28'



SS: wh, ltgy, trns, tr dk lit frag, abnt glau, vfgr-fgr, v p srt, fri, sbang-ang, calc-arg cmt
SHYSS: wh, lt gy, tr dk lit frag, vfgr, fri, brit clus, sbang-ang, smwt calc cmt

WT IN 8.40/ OUT 8.40
VIS IN 25/ OUT 25

MD 3934'
INC 3.5°
AZM 310.7°
TVD 3920.06'

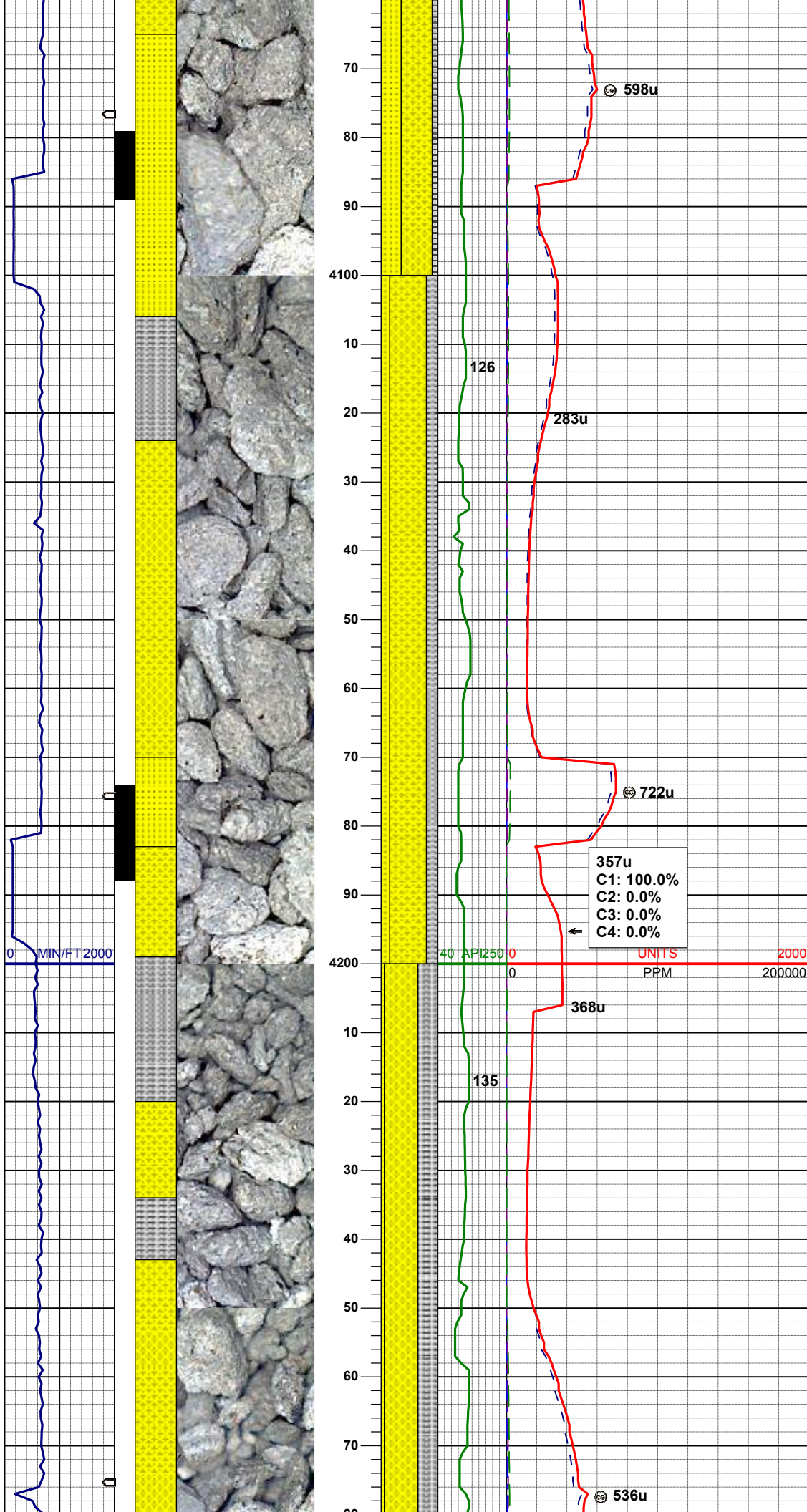
SS: wh, ltgy, trns, tr dk lit frag, abnt glau, vfgr-fgr, v p srt, fri, sbang-ang, calc-arg cmt
SHYSS: wh, lt gy, tr dk lit frag, vfgr, fri, brit clus, sbang-ang, smwt calc cmt
SLTYSH: gy-dkgy, ltbrn, fri, sbblky, slty-gt tex

GAS SCALE
CHANGE

295u
C1: 95.7%
C2: 3.2%
C3: 0.8%
C4: 0.3%

MD 4029'
INC 2.3°
AZM 342.0°
TVD 4014.94'

SS: wh, ltgy, trns, tr dk lit frag, abnt glau, vfgr-fgr, v p srt, fri, sbang-ang, calc-arg cmt
SHYSS: wh, lt gy, tr dk lit frag, vfgr, fri, brit clus, sbang-ang, smwt calc cmt
SLTYSH: gy-dkgy, ltbrn, fri, sbblky, slty-gt tex

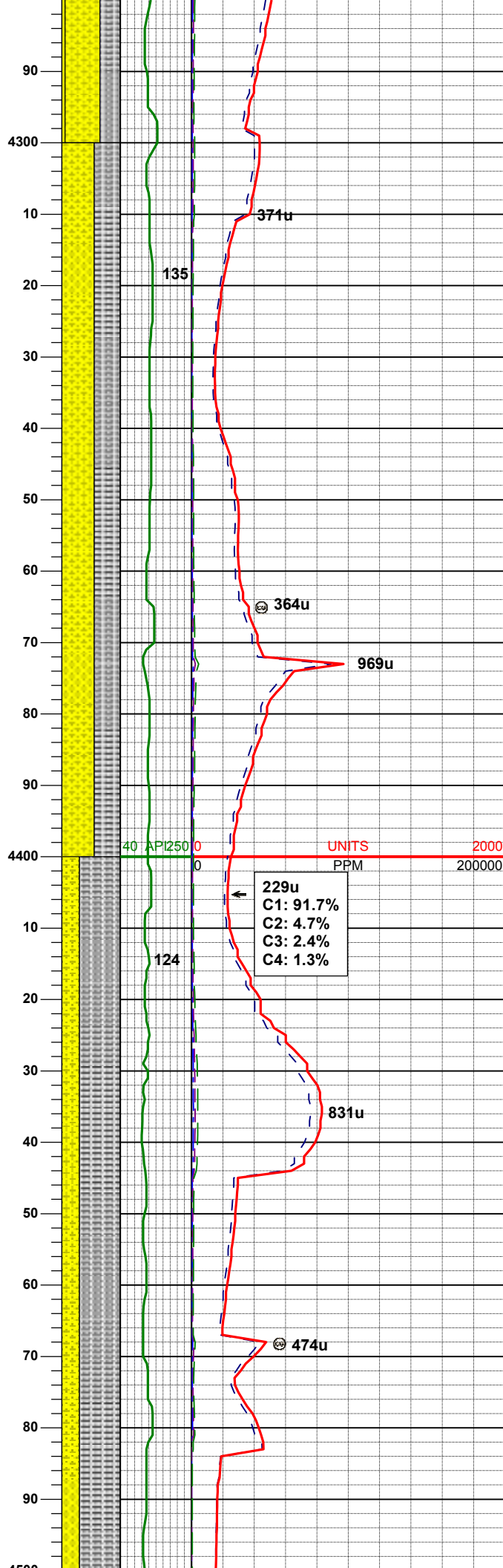


MD 4124'
INC 2.7°
AZM 22.6°
TVD 4109.86'

SHYSS: wh, lt gy, tr dk lit frag, vfgr, fri, brit clus, sbang-ang, smwt calc cmt
SLTYSH: gy-dkgy, ltbrn, fri, sbblky, slty-gt tex
SS: wh, ltgy, trns, tr dk lit frag, occ glau, vfgr-fgr, v p srt, fri, sbang-ang, calc-arg cmt

MD 4219'
INC 0.8°
AZM 62.1°
TVD 4204.81'

SHYSS: wh, lt gy, tr dk lit frag, vfgr, fri, brit clus, sbang-ang, smwt calc cmt
SLTYSH: gy-dkgy, ltbrn, fri, sbblky, slty-gt tex
SS: wh, ltgy, trns, tr dk lit frag, occ glau, vfgr-fgr, v p srt, fri, sbang-ang, calc-arg cmt



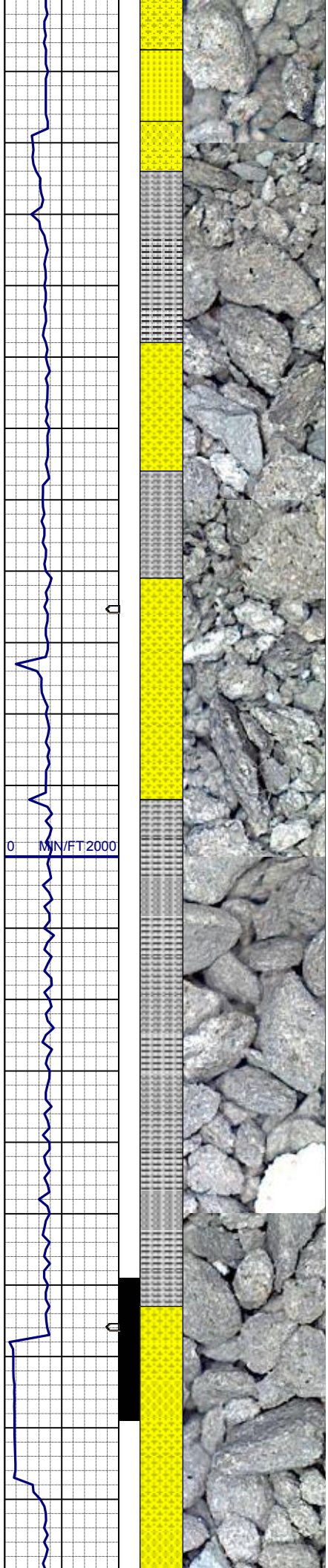
MD 4314'
INC 1.6°
AZM 118.2°
TVD 4299.79'

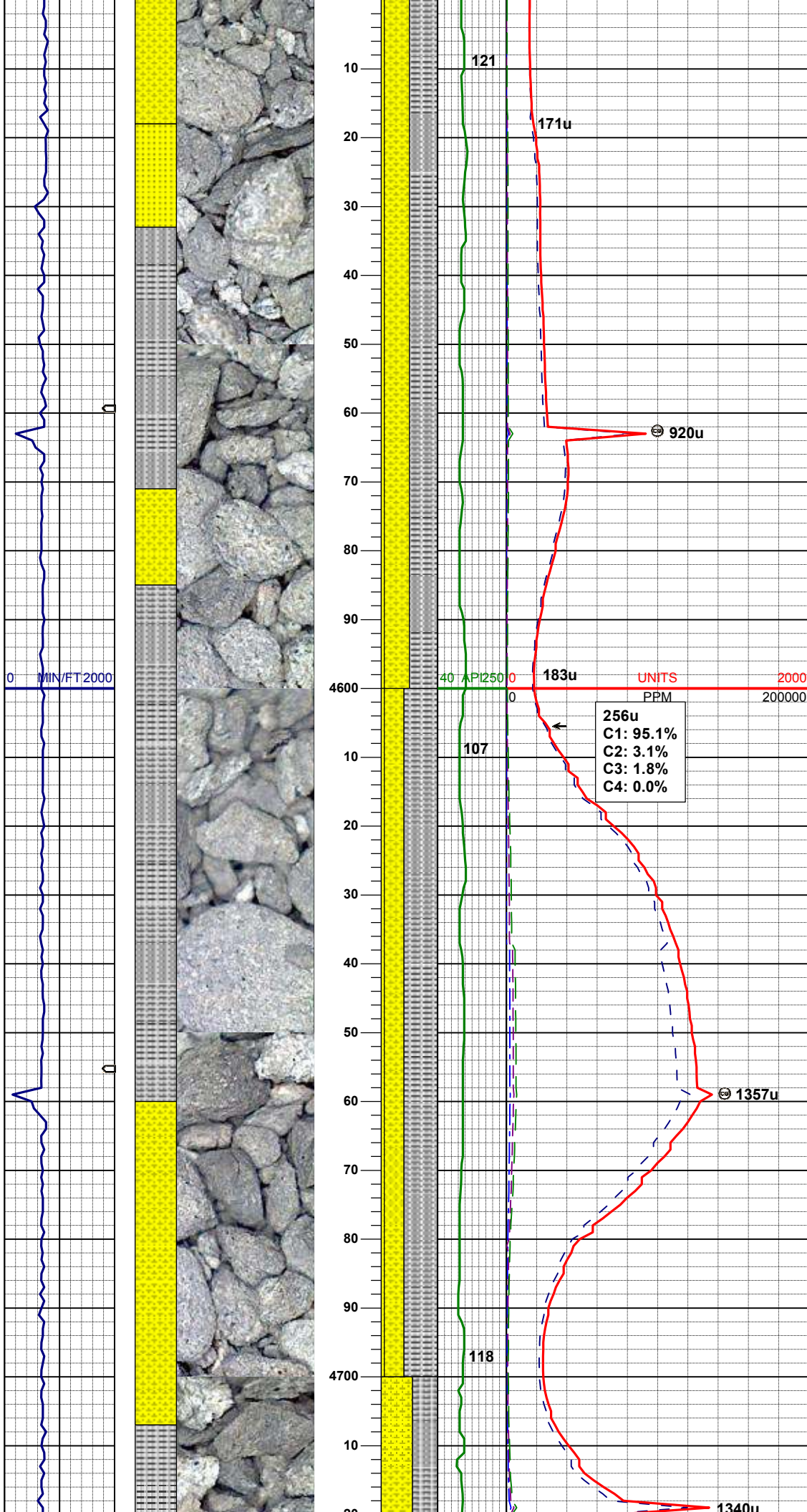
SHYSS: wh, lt gy, tr dk lit frag, vfgr,
fri, brit clus, sbang-ang, smwt calc
cmt
SLTYSH: gy-dkgy, ltbrn, fri, sbblky,
silty-gt tex

WT IN 8.30/ OUT 8.30
VIS IN 25/ OUT 25

MD 4409'
INC 2.6°
AZM 120.7°
TVD 4394.73'

SLTYSH: gy-dkgy, ltbrn, fri, sbblky,
silty-gt tex
SHYSS: wh, lt gy, tr dk lit frag, vfgr,
fri, brit clus, sbang-ang, smwt calc
cmt





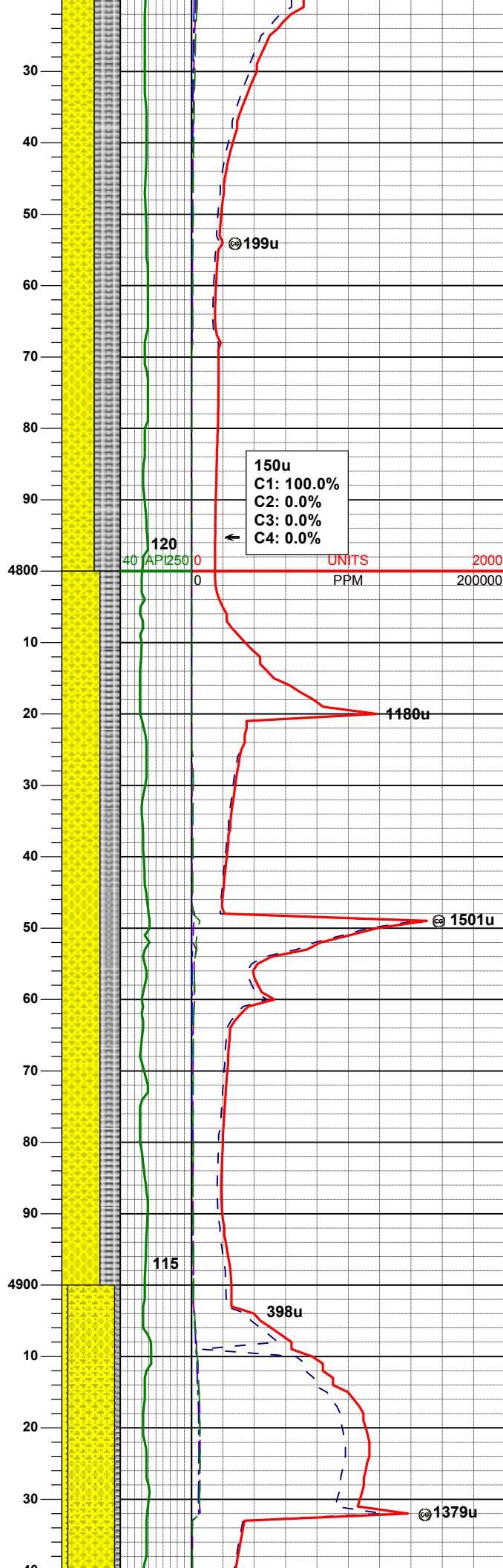
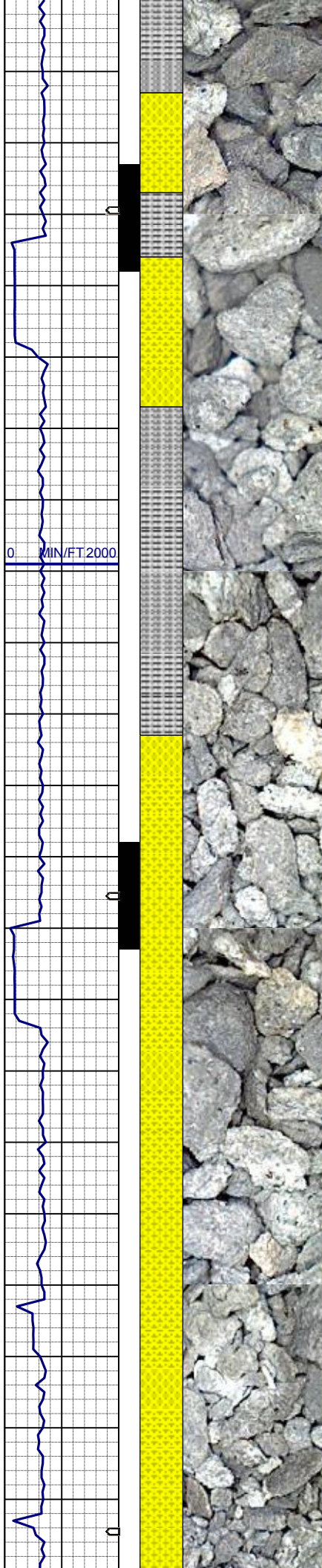
MD 4504'
INC 0.7°
AZM 129.1°
TVD 4489.68'

SLTYSH: gy-dkgy, ltbrn, fri, sbblky, slty-gt tex
SHYSS: wh, lt gy, tr dk lit frag, vfgr, fri, brit clus, sbang-ang, smwt calc cmt
SS: wh, ltgy, trns, tr dk lit frag, occ glau, vfgr-fgr, v p srt, fri, sbang-ang, calc-arg cmt

MD 4599'
INC 1.3°
AZM 158.7°
TVD 4584.67'

SLTYSH: gy-dkgy, ltbrn, fri, sbblky, slty-gt tex
SHYSS: wh, lt gy, tr dk lit frag, vfgr, fri, brit clus, sbang-ang, smwt calc cmt
SS: wh, ltgy, trns, tr dk lit frag, occ glau, vfgr-fgr, v p srt, fri, sbang-ang, calc-arg cmt

MD 4693'
INC 2.6°
AZM 165.9°
TVD 4678.61'

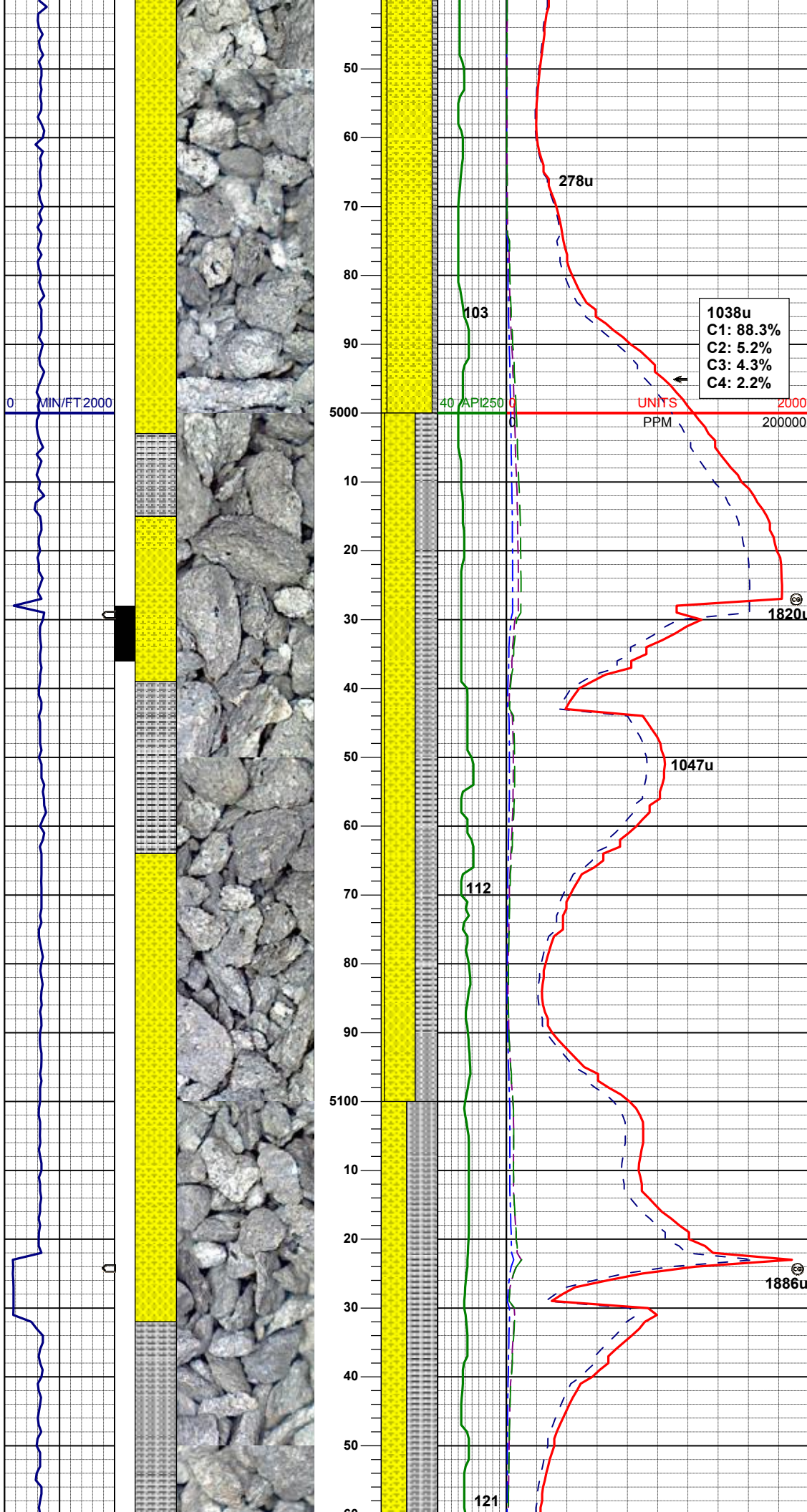


SHYSS: wh, lt gy, tr dk lit frag, vfgr,
fri, fri clus, sbang-ang, smwt calc
cmt
SLTYSH: gy-dkgy, ltbrn, fri, sbblky,
slty-gt tex

MD	4788'
INC	1.5°
AZM	218.4°
TVD	4773.56'

SHYSS: wh, lt gy, tr dk lit frag, vfgr,
fri, brit clus, sbang-ang, smwt calc
cmt
SLTYSH: gy-dkgy, ltbrn, fri, sbblky,
slty-gt tex

MD	4883'
INC	1.0°
AZM	282.8°
TVD	4868.54'



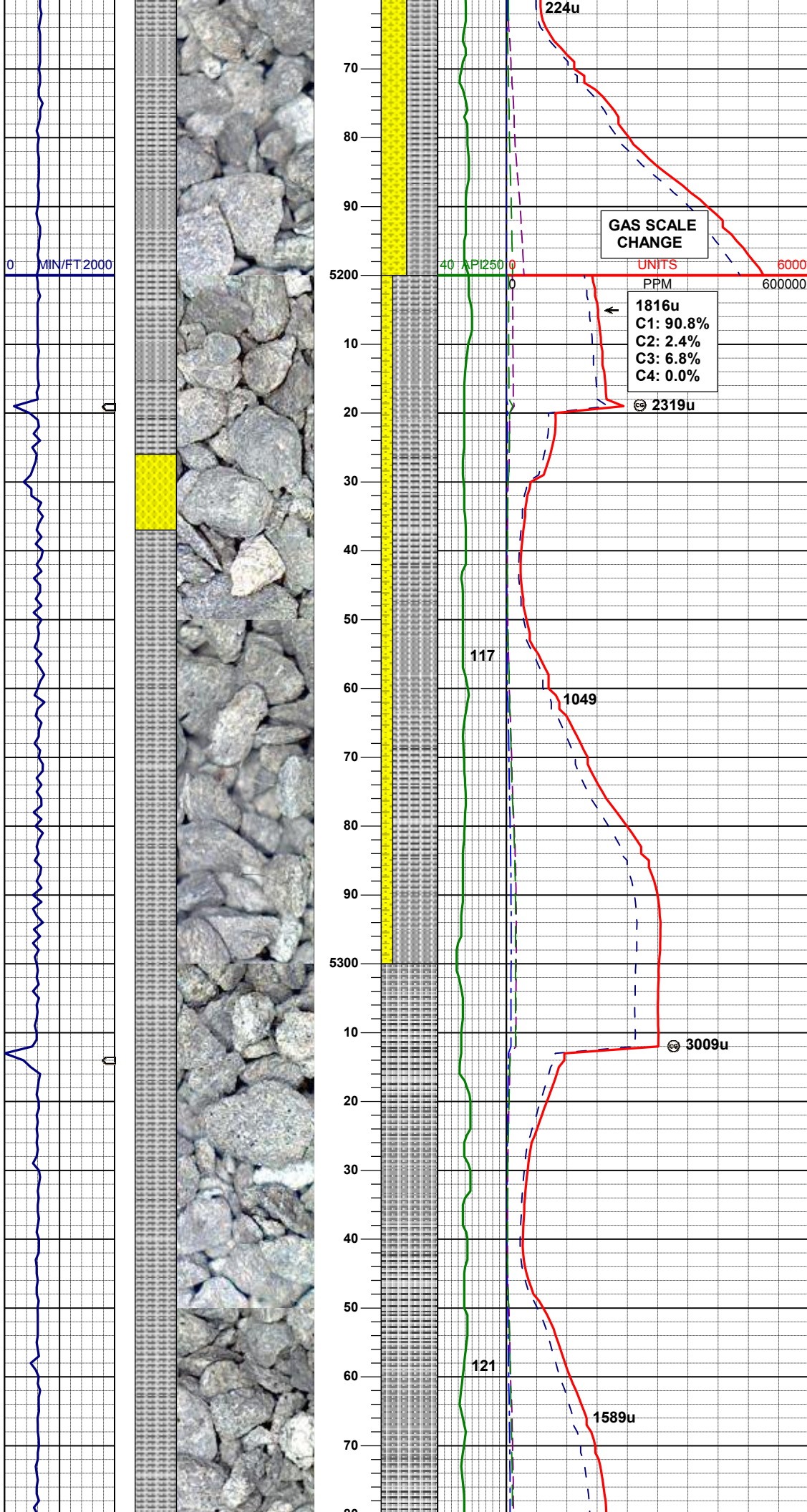
SHYSS: wh, lt gy, tr dk lit frag, vfgr, fri, brit clus, sbang-ang, smwt calc cmt
SLTYSH: gy-dkgy, ltbrn, fri, sbbiky, slty-gt tex
SS: wh, ltgy, trns, tr dk lit frag, tr glau, vfgr-fgr, v p srt, fri, sbang-ang, calc-arg cmt

MD 4978'
INC 1.1°
AZM 290.3°
TVD 4963.52'

SHYSS: wh, lt gy, tr dk lit frag, vfgr, fri, brit clus, sbang-ang, smwt calc cmt
SLTYSH: gy-dkgy, ltbrn, fri, sbbiky, slty-gt tex
SS: wh, ltgy, trns, tr dk lit frag, tr glau, vfgr-fgr, v p srt, fri, sbang-ang, calc-arg cmt

MD 5073'
INC 0.9°
AZM 293.8°
TVD 5058.51'

SLTYSH: gy-dkgy, ltbrn, fri, sbbiky, slty-gt tex
SHYSS: wh, lt gy, tr dk lit frag, vfgr, fri, brit clus, sbang-ang, smwt calc cmt



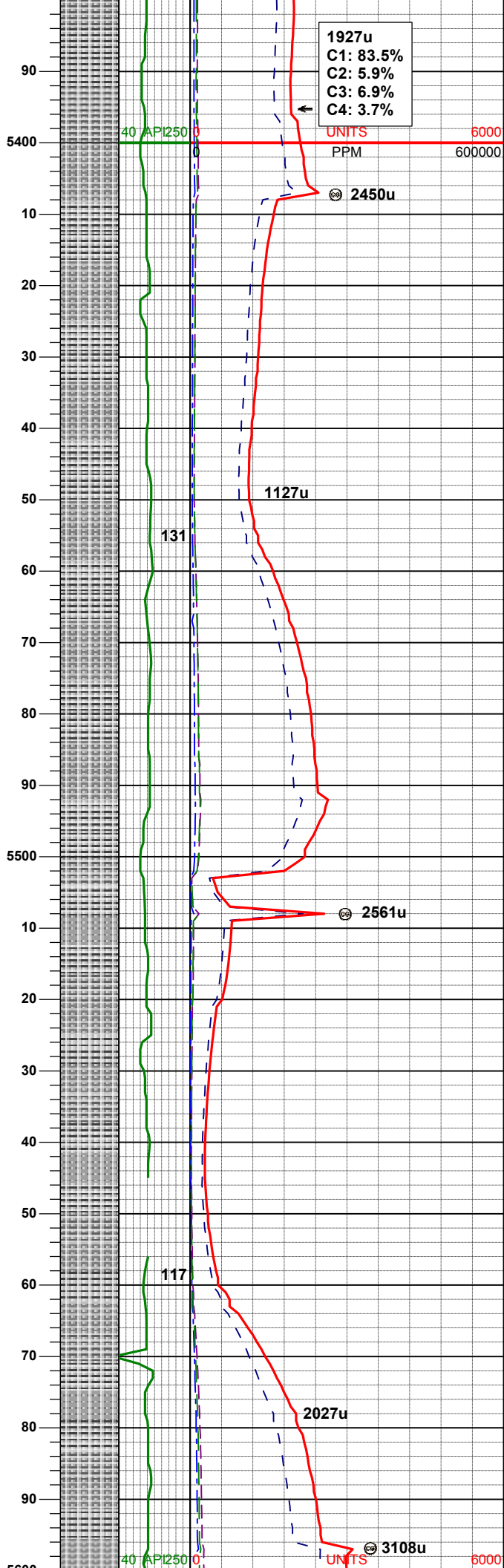
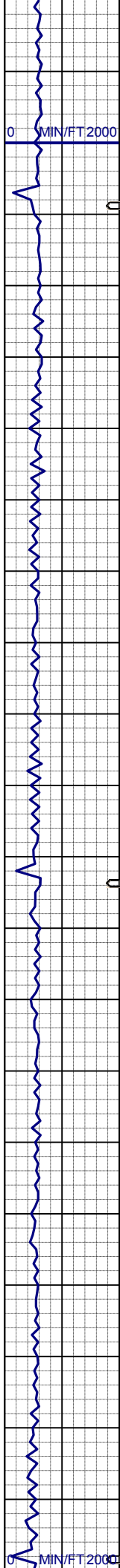
MD 5168'
INC 0.9°
AZM 330.0°
TVD 5153.50'

SLTYSH: gy-dkgy, ltbrn, fri, sbbiky,
slty-gt tex
SHYSS: wh, lt gy, tr dk lit frag, vfgr,
fri, brit clus, sbang-ang, smwt calc
cmt

MD 5263'
INC 1.0°
AZM 320.7°
TVD 5248.48'

SLTYSH: gy-dkgy, ltbrn, fri, sbbiky,
slty-gt tex

MD 5357'
INC 1.0°
AZM 339.7°
TVD 5342.47'



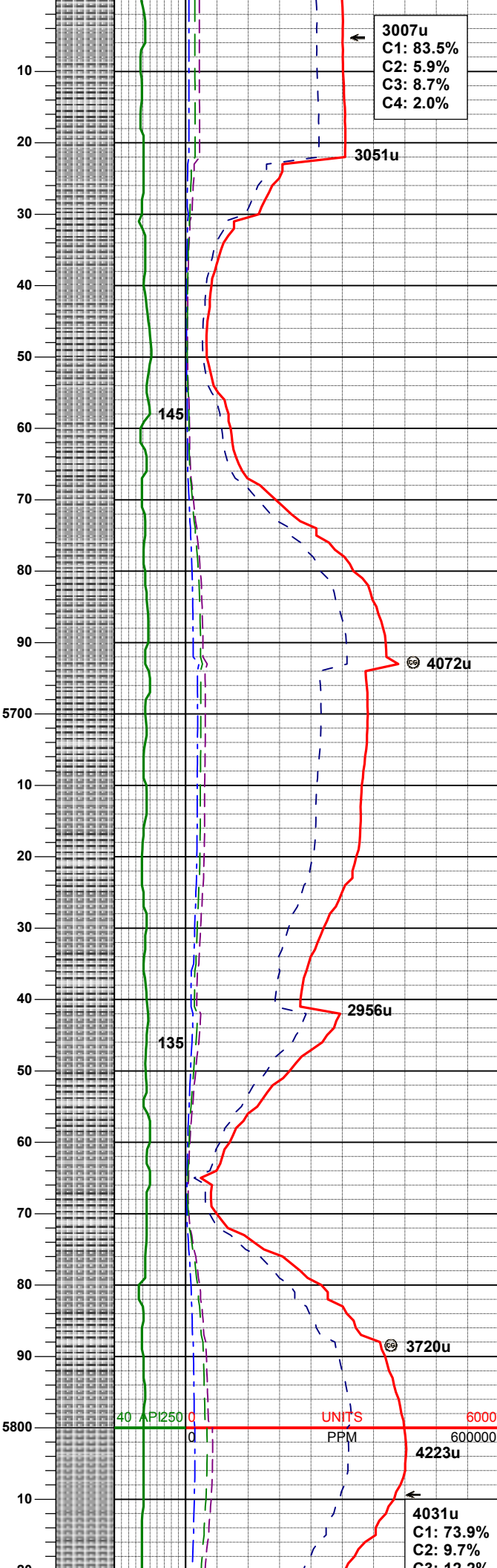
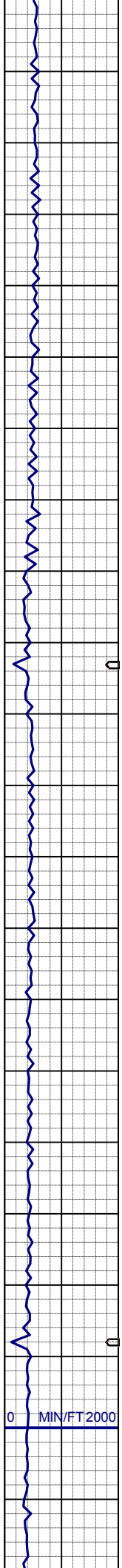
SLTYSH: gy-dkgy, ltbrn, fri, sbbiky,
slty-gt tex

MD	5452'
INC	0.4°
AZM	318.6°
TVD	5437.46'

WT IN 9.10/ OUT 9.10
VIS IN 32/ OUT 32

MD	5547'
INC	0.3°
AZM	311.9°
TVD	5532.46'

SLTYSH: gy-dkgy, ltbrn, fri, sbbiky,
slty-gt tex



3007u
C1: 83.5%
C2: 5.9%
C3: 8.7%
C4: 2.0%

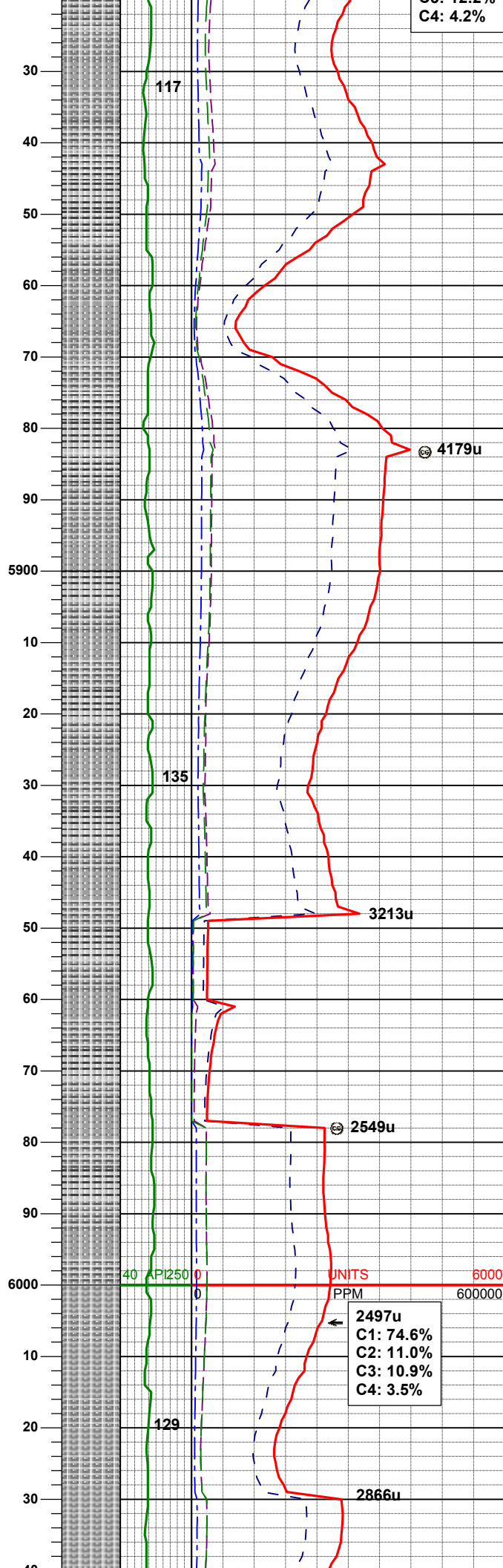
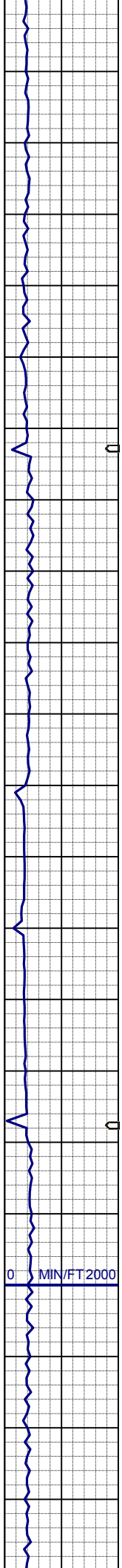
MD 5642'
INC 0.2°
AZM 258.8°
TVD 5627.46'

SLTYSH: gy-dkgy, ltbrn, fri, sbbiky,
slty-gt tex

MD 5737'
INC 0.3°
AZM 210.3°
TVD 5722.46'

SLTYSH: gy-dkgy, ltbrn, fri, sbbiky,
slty-gt tex

4031u
C1: 73.9%
C2: 9.7%
C3: 12.2%



C3: 12.2%
C4: 4.2%

MD 5831'
INC 0.4°
AZM 261.7°
TVD 5816.46'

SLTYSH: gy-dkgy, ltbrn, fri, sbbiky,
slty-gt tex

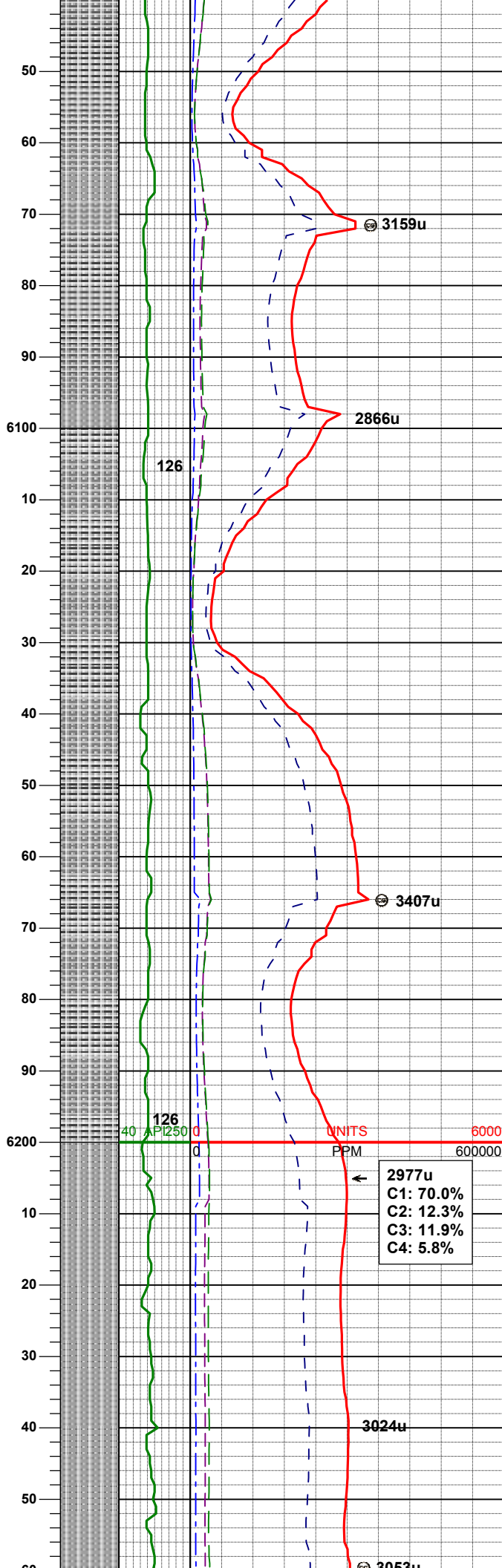
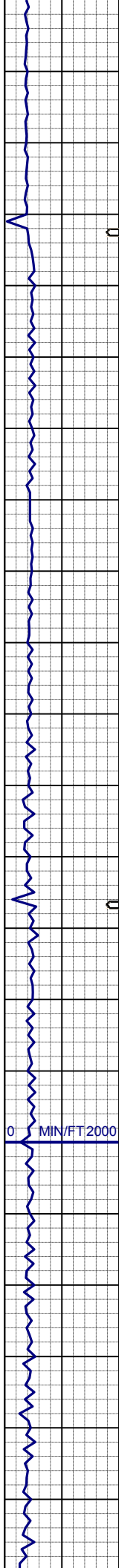
MD 5926'
INC 0.4°
AZM 222.1°
TVD 5911.46'

SLTYSH: gy-dkgy, ltbrn, fri, sbbiky,
slty-gt tex, tr ss

WT IN 9.40/ OUT 9.40
VIS IN 34/ OUT 34

2497u
C1: 74.6%
C2: 11.0%
C3: 10.9%
C4: 3.5%

MD 6021'
INC 0.2°
AZM 281.9°
TVD 6006.45'



SLTYSH: gy-dkgy, ltbrn, fri, sbbiky,
slty-gt tex

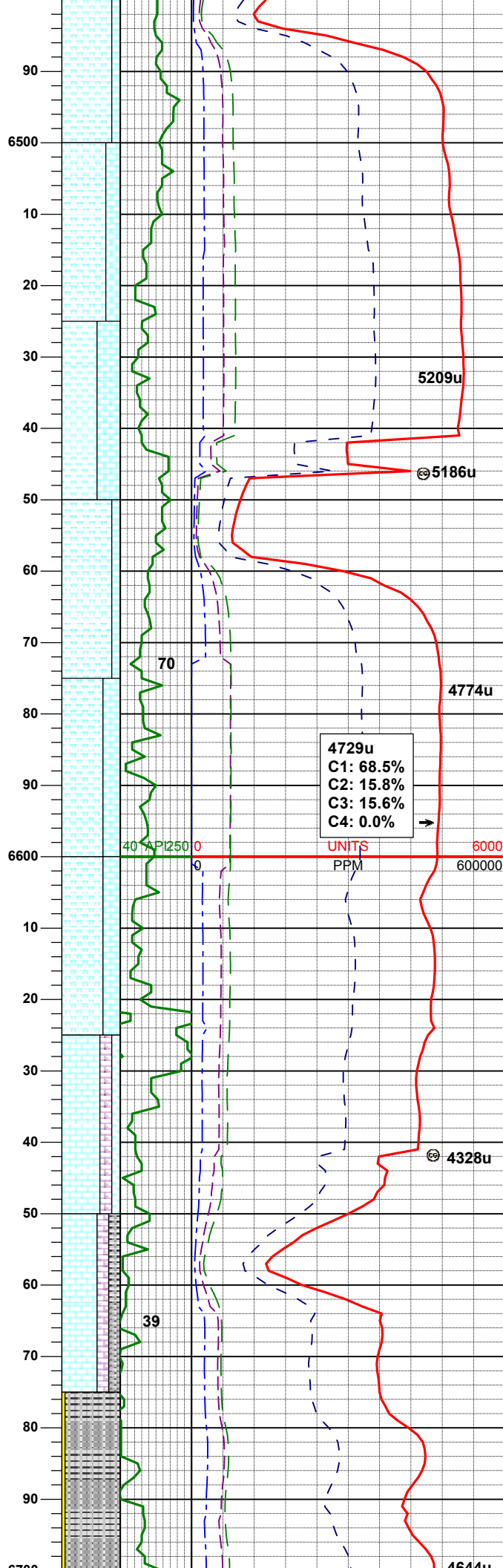
MD	6116'
INC	0.4°
AZM	227.4°
TVD	6101.45'

SLTYSH: gy-dkgy, ltbrn, fri, sbbiky,
slty-gt tex, sl calc

MD	6210'
INC	0.5°
AZM	253.6°
TVD	6195.45'

2977u
C1: 70.0%
C2: 12.3%
C3: 11.9%
C4: 5.8%

SLTYSH: gy-dkgy, ltbrn, fri, sbbiky,
slty-gt tex, sl calc



MRL: gybrn-dkgy, sft-firm, sbblky-sbply, mot ip, slty tex, v calc, tr bent
CHK: ltgy-gy-crm, sft-firm, sbblky-sbply, wxy-mot tex, v calc

MD 6495'
INC 0.4°
AZM 104.0°
TVD 6480.45'

MRL: gybrn-dkgy, sft-firm, sbblky-sbply, mot ip, slty tex, v calc, tr bent
CHK: ltgy-gy-crm, sft-firm, sbblky-sbply, wxy-mot tex, v calc

MRL: gybrn-dkgy, sft-firm, sbblky-sbply, mot ip, slty tex, v calc, tr bent
CHK: ltgy-gy-crm, sft-firm, sbblky-sbply, wxy-mot tex, v calc

MRL: gybrn-dkgy, sft-firm, sbblky-sbply, mot ip, slty tex, v calc, tr bent
CHK: ltgy-gy-crm, sft-firm, sbblky-sbply, wxy-mot tex, v calc

MD 6589'
INC 0.3°
AZM 43.9°
TVD 6574.45'

MRL: gybrn-dkgy, sft-firm, sbblky-sbply, mot ip, slty tex, v calc, tr bent, tr fos frag
CHK: ltgy-gy-crm, sft-firm, sbblky-sbply, wxy-mot tex, v calc

4729u
C1: 68.5%
C2: 15.8%
C3: 15.6%
C4: 0.0%

MRL: gybrn-dkgy, sft-firm, sbblky-sbply, mot ip, slty tex, v calc, tr bent, tr fos frag
CHK: ltgy-gy-crm, sft-firm, sbblky-sbply, wxy-mot tex, v calc

LS: wh-ltgy, firm, sbblky-sbply, sm-wxy tex, v calc, doli ip
MRL: gybrn-dkgy, sft-firm, sbblky-sbply, mot ip, slty tex, v calc

LS: wh-ltgy, firm, sbblky-sbply, sm-wxy tex, v calc, doli ip
SLTYSH: gy-dkgy, sft-firm, sbblky-sbply, slty tex, smwt calc, tr pyr

MD 6684'
INC 0.1°
AZM 1.5°
TVD 6669.44'

SLTYSH: gy-dkgy, gybrn, sbblky-sbply, slty tex, smwt calc, tr ls
SS: wh-trnsl, sme gy, fgr-vfgr, wsrt, p por, calc-arg cmt, tr dk lit frag, tr chlor

