

Schlumberger

CEMENT BOND LOG WITH VDL

CU

COMPANY: C F & C ENERGY RESOURCES

WELL: MATSUSHIMA 03-14

FIELD: WATFENBERG

COUNTY: HELD

STATE: COLORADO

NATION: NM NE

LOCATION: NM NE

SEC1: 10

TWP: 4N

R6E1: 6E4

PERMANENT DATUM: GL

ELEVATION: 4717.0'

LOG MEASURED FROM: PERM. DATUM

DRUG. MEASURED FROM: KB

OTHER SERVICES- PERFORATE

PROGRAM

TABE NO:

DATE: 16 FEB 84

RUN NO: 1

DEPTH-DRILLER: 7333.0'

DEPTH-LOGGER: 7333.0'

BTM LOG INTERVAL: 6110.0'

UDR LOG INTERVAL: 380'

CASING-DRILLER: 8.625

CASING-LOGGER: 11.60 LB/F

CAS HEIGHT: 24.00 LB/F

BIT SIZE: 12.25

7.875

TIME CIRC. STOPPED: 0830

TIME LOGGER ON BTM: 0830

MAX. REC. TEMP:

LOGGING UNIT NO: 8367

LOGGING UNIT LOC: FORT MORGAN 3610-1

RECORDED BY: JIM URDEA

WITNESSED BY: ED KEIL, TOM MAJORS

REMARKS:

EQUIPMENT NUMBERS-

SLS 182

SHM 379

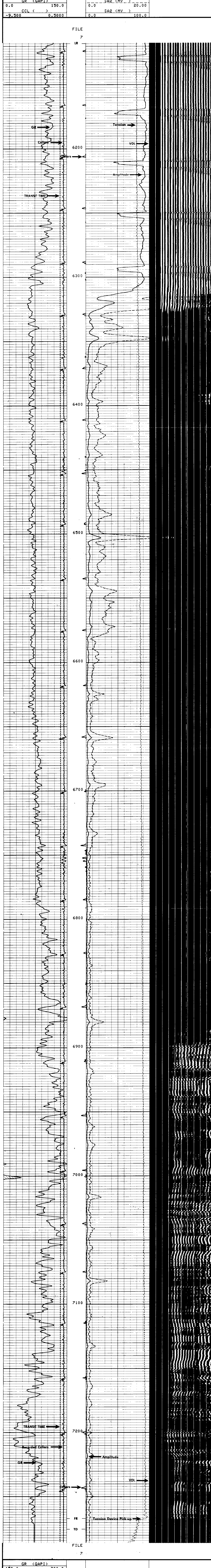
SGTG 38

CCLAJ 182

ALL INTERPRETATIONS ARE OPINIONS BASED ON INFERENCES FROM ELECTRICAL OR OTHER MEASUREMENTS AND WE CANNOT, AND DO NOT GUARANTEE THE ACCURACY OR CORRECTNESS OF ANY INTERPRETATIONS, AND WE SHALL NOT, EXCEPT IN THE CASE OF GROSS OR WILLFUL NEGLIGENCE ON OUR PART, BE LIABLE OR RESPONSIBLE FOR ANY LOSS, COSTS, DAMAGES OR EXPENSES INCURRED OR SUSTAINED BY ANYONE RESULTING FROM ANY INTERPRETATION MADE BY ANY OF OUR OFFICERS, AGENTS OR EMPLOYEES. THESE INTERPRETATIONS ARE ALSO SUBJECT TO OUR GENERAL TERMS AND CONDITIONS AS SET OUT IN OUR CURRENT PRICE SCHEDULE.

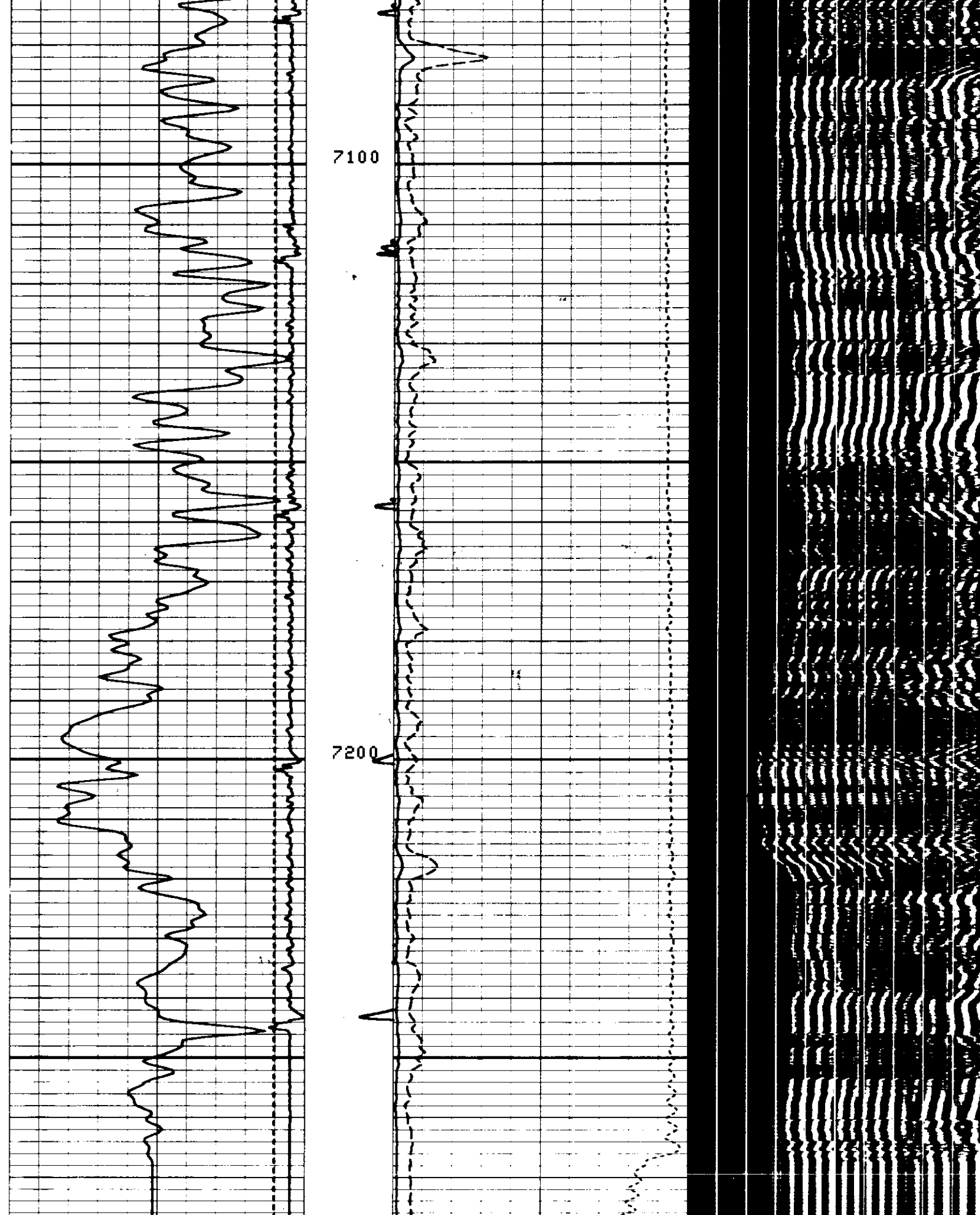
FILE

7



SENSOR MEASURE POINT TO TENSION REFERENCE POINT					
DT	.0	FEET	TR	14.7	FEET
IT2	.0	FEET	TT1	.0	FEET
SA1	.0	FEET	T0	.0	FEET
TENS	.0	FEET	SA2	.0	FEET
CCL	19.3	FEET			

PARAMETERS					
NAME	VALUE	UNIT	NAME	VALUE	UNIT
BILI	0.7000		BS	7.875	IN
CSTR	1000.	PSI	CHEI	11.60	LB/F
SAIG	1.700		SA2G	0.8000	
DTM	56.00	US/F	CDTS	100.0	
FPHI	SPH1		DTF	189.0	US/F
BHS	CASE		CSIZ	4.500	IN
DD	0.0				



SENSOR MEASURE POINT TO TENSION REFERENCE POINT					
DT	.0	FEET	TR	14.7	FEET
IT2	.0	FEET	TT1	.0	FEET
SA1	.0	FEET	T0	.0	FEET
TENS	.0	FEET	SA2	.0	FEET
CCL	19.3	FEET			

PARAMETERS					
NAME	VALUE	UNIT	NAME	VALUE	UNIT
BILI	0.7000		BS	7.875	IN
CSTR	1000.	PSI	CHEI	11.60	LB/F
SAIG	1.700		SA2G	0.8000	
DTM	56.00	US/F	CDTS	100.0	
FPHI	SPH1		DTF	189.0	US/F
BHS	CASE		CSIZ	4.500	IN
DD	0.0				