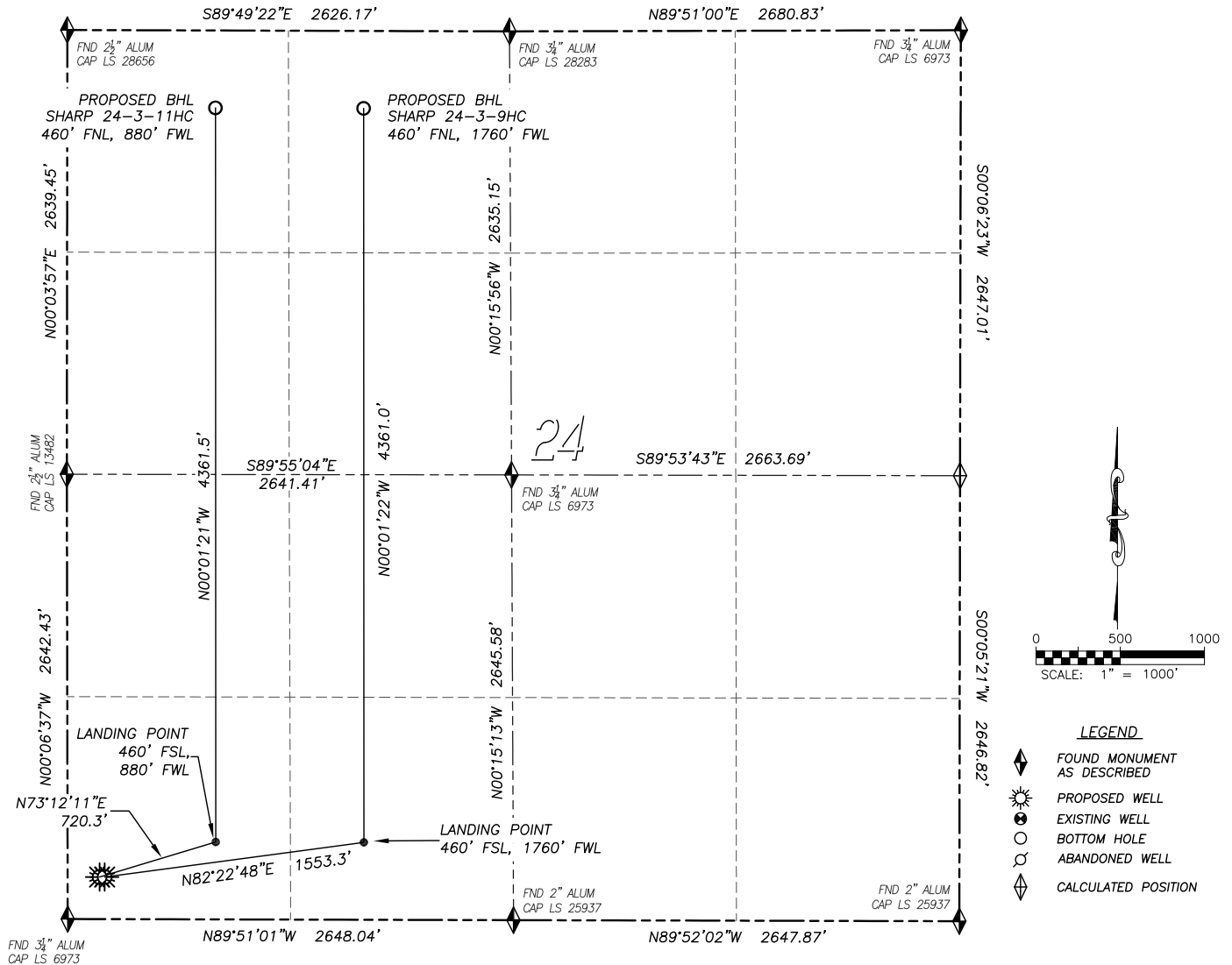


MULTI-WELL DIRECTIONAL LAYOUT PLAN SHARP 24-3-11HC & SHARP 24-3-9HC

SECTION 24, TOWNSHIP 1 SOUTH, RANGE 67 WEST OF THE 6TH PRINCIPAL MERIDIAN

NAD 83 LATITUDE AND LONGITUDE**SHARP 24-3-11HC SURFACE HOLE:**

LATITUDE: N39.94403°
 LONGITUDE: W104.84605°
 ELEVATION: 5019'
 FOOTAGE: 250' FSL, 190' FWL
 PDOP: 1.2
 QTR/QTR: SW4/SW4

LANDING POINT:

LATITUDE: N39.94460°
 LONGITUDE: W104.84359°
 FOOTAGE: 460' FSL, 880' FWL

BOTTOM HOLE:

LATITUDE: N39.95657°
 LONGITUDE: W104.84359°
 FOOTAGE: 460' FNL, 880' FWL

NAD 83 LATITUDE AND LONGITUDE**SHARP 24-3-9HC SURFACE HOLE:**

LATITUDE: N39.94403°
 LONGITUDE: W104.84594°
 ELEVATION: 5019'
 FOOTAGE: 250' FSL, 220' FWL
 PDOP: 1.2
 QTR/QTR: SW4/SW4

LANDING POINT:

LATITUDE: N39.94460°
 LONGITUDE: W104.84045°
 FOOTAGE: 460' FSL, 1760' FWL

BOTTOM HOLE:

LATITUDE: N39.95656°
 LONGITUDE: W104.84045°
 FOOTAGE: 460' FNL, 1760' FWL