

**ANADARKO PETROLEUM CORP - EBUS
DO NOT MAIL - PO BOX 4995
THE WOODLANDS, Texas**

Henrickson 34N-18HZ

Major 29

Post Job Summary

Cement Surface Casing

Date Prepared: 09/23/2013
Version: 1

Service Supervisor: PICKELL, CHRISTOPHER

Submitted by: HINDS, MOLLYE

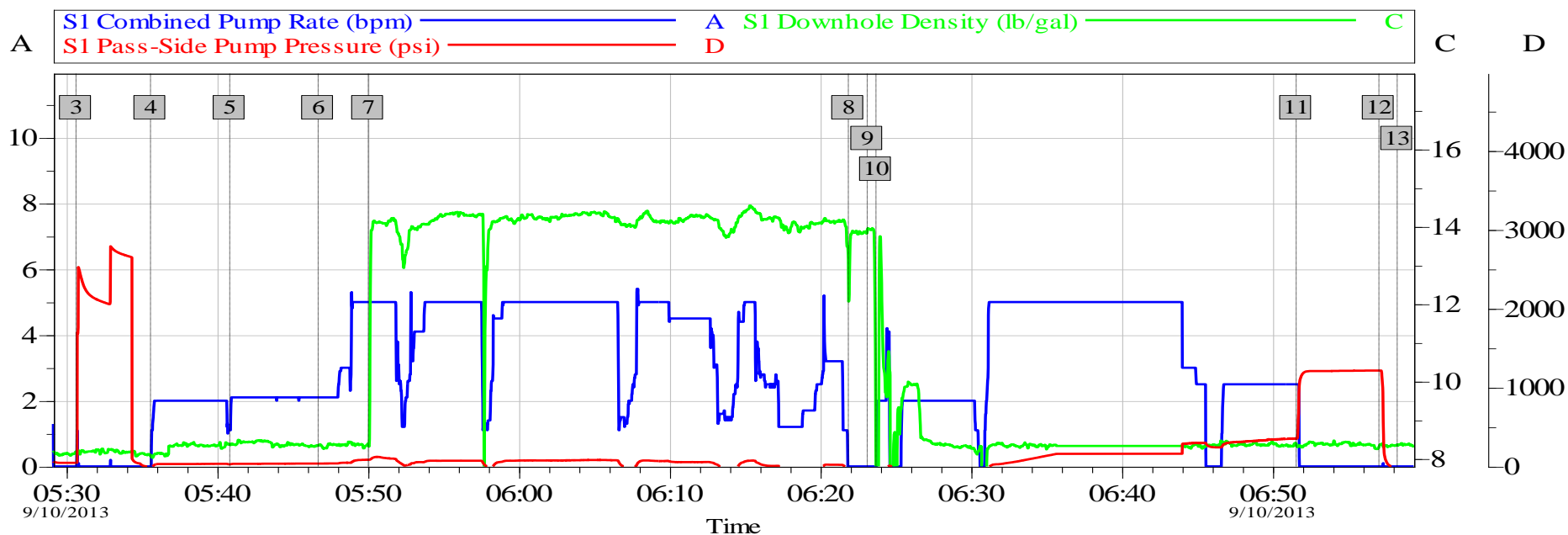
Wellbore Geometry

Job Tubulars					MD	
Type	Description	Size in	ID in	Wt lbm/ft	Top ft	Bottom ft
Casing	9 5/8" Surface Casing	9.63	8.921	36.00	0.00	1,020.00
Open Hole Section	13 1/2" Open Hole Section		13.500		0.00	1,026.00

Pumping Schedule

Stage /Plug #	Fluid #	Fluid Type	Fluid Name	Surface Density lbm/gal	Avg Rate bbl/min	Surface Volume	Downhole Volume
1	1	Spacer	Fresh Water Spacer	8.33	2.00	10.0 bbl	10.0 bbl
1	2	Spacer	Mud FLsuh	8.40	2.00	12.0 bbl	12.0 bbl
1	2	Spacer	Fresh Water Spacer	8.33	4.00	10.0 bbl	10.0 bbl
1	3	Cement Slurry	SwiftCem B2	14.20	5.00	436.0 sacks	436.0 sacks

HENRICKSON 34N-18HZ ANADARKO



Global Event Log

Intersection	SPPP	Intersection	SPPP	Intersection	SPPP
3 Test Lines	05:30:39 45.00	4 Pump Water	05:35:35 -2.000	5 Pump Mudflush	05:40:51 28.00
6 Pump Water	05:46:43 37.00	7 Pump Swiftcem 14.2#	05:50:02 84.00	8 Shutdown	06:21:52 -8.000
9 Drop Top Plug	06:23:08 -13.00	10 Pump Displacement	06:23:42 -13.02	11 Bump Plug	06:51:34 352.0
12 Check Floats	06:57:03 1215	13 End Job	06:58:16 -7.000		

Customer: Anadarko
Well Description: Henrickson 34N-18HZ
Service Supervisor Christopher Pickell

Job Date: 10-Sep-2013
UWI: 05-123-37675
Service Operator William Jewell

Sales Order #: 900734804

OptiCem v6.4.10
10-Sep-13 07:26

HALLIBURTON

Service Supervisor Reports

Job Log

Date/Time	Chart #	Activity Code	Pump Rate	Cum Vol	Pump		Pressure (psig)		Comments
09/10/2013 01:25		Depart Yard Safety Meeting							SAFETY MEETING TO DISCUSS JOURNEY TO THE RIG. DISCUSS HAZARDS. MAINLY THE RAIN AND WET ROADS. AS WELL AS DRIVING AT NIGHT
09/10/2013 01:30		Depart from Service Center or Other Site							DEPART AFTER ALL TRUCKS APPROVED TO LEAVE THE YARD BY GATE GAURDS
09/10/2013 02:00		Arrive At Loc							ARRIVE AT LOCATION ONE HOUR EARLY IN PREPERATION FOR MUDDY LOCATION. CHAINED UP THE 660 BULK TRUCK. CHAINS NOT NECESSARY ON THE PUMP TRUCK AND BODY LOAD. 1ST JOINT OF CASING BEING RAN IN THE HOLE
09/10/2013 02:15		Pre-Rig Up Safety Meeting							HAZARD HUNT TO DISCUSS RIG UP SAFETY AND PROCEDURE. MADE SURE CONTAINMENTS WERE IN PLACE READY TO GO
09/10/2013 02:30		Rig-Up Equipment							SPOT IN ALL TRUCKS AND RIG UP ALL EQUIPMENT OUT OF THE BUFFER ZONE. 1 FLEX HOSE LEFT TO RUN ONCE CASING WAS IN THE HOLE. TRUCKS PRIMED UP FOR THE JOB
09/10/2013 04:50		Pre-Job Safety Meeting							PRE JOB SAFETY MEETING WITH ALL PERSONEL ON LOCATION TO DISCUSS JOB SAFETY, PROCEDURE, AND RESPONSABILITIES
09/10/2013 05:30		Start Job							RIG BROKE OFF CASING AND CEMENT PLUG CONTAINER ATTACHED TO BEGIN THE JOB. PLUG PRELOADED IN THE PLUG CONTAINER
09/10/2013 05:30		Test Lines	1	2				2500.0	PRESSURE TEST LINES TO 2500 PSI. CHECK FOR VISIBLE LEAKS AND PRESSURE LOSS
09/10/2013 05:35		Pump Spacer 1	2	10				30.0	PUMP WATER
09/10/2013 05:40		Pump Spacer 2	2	12				35.0	PUMP MUDFLUSH
09/10/2013 05:46		Pump Spacer 1	4	10				40.0	PUMP WATER
09/10/2013 05:50		Pump Cement	5	118.8				100.0	PUMP SWIFCEM CEMENT 436 SKS 14.2 PPG 1.53 CUFT/SK 7.63 GAL/SK MIXED WITH RIG WATER
09/10/2013 06:21		Shutdown							WASH PUMPS AND LINES ON TOP OF THE PLUG
09/10/2013 06:23		Drop Top Plug							PLUG PRELOADED IN PLUG CONTAINER
09/10/2013 06:23		Pump Displacement	5	77.2				350.0	PUMP DISPLACEMENT USING WATER.
09/10/2013 06:51		Bump Plug	2.5					352.0	CALCULATED PRESSURE TO LAND WAS 297. PLUG LANDED WITH 352 PSI TAKING PRESSURE UP TO 1000. PUMPED 1 BBL OVER CALCULATED TO BUMP THE PLUG
09/10/2013 06:57		Check Floats						1215.0	PRESSURE WAS HELD FOR 5 MINUTES, CLIMBING TO 1215 PSI. PRESSURE WAS RELEASED, FLOATS HELD. 1 BBL BACK TO TANKS
09/10/2013 06:58		End Job							22 BBL OF CEMENT TO SURFACE
09/10/2013 07:00		Pre-Rig Down Safety Meeting							SAFETY HUDDLE TO DISCUSS RIG DOWN PROCEDURE AND PREVENTING SPILLS

HALLIBURTON

Date/Time	Chart #	Activity Code	Pump Rate	Cum Vol	Pump		Pressure (psig)		Comments
09/10/2013 07:15		Rig-Down Equipment							RIG EQUIPMENT INTO PLACE FOR WASH UP THEN RIG DOWN ALL EQUIPMENT ONCE WASH UP COMPLETE
09/10/2013 07:55		Safety Meeting - Departing Location							SAFETY MEETING TO DISCUSS JOURNEY TO FUEL STATION THEN BACK TO THE YARD
09/10/2013 08:00		Depart Location for Service Center or Other Site							UNCHAIN TRUCK AND LEAVE LOCATION. RAIN FOR RENT CALLED AT 0720 AND TOLD TO PICK UP CONTAINMENT ASAP AND MOVE IT TO THE NEXT LOCATION

The Road to Excellence Starts with Safety

Sold To #: 300466		Ship To #: 3099485		Quote #:		Sales Order #: 900734804	
Customer: ANADARKO PETROLEUM CORP - EBUS				Customer Rep: Balkenbush, Bob			
Well Name: Henrickson			Well #: 34N-18HZ		API/UWI #: 05-123-37675		
Field: WATTENBERG		City (SAP): PLATTEVILLE		County/Parish: Weld		State: Colorado	
Lat: N 40.237 deg. OR N 40 deg. 14 min. 11.713 secs.				Long: W 104.827 deg. OR W -105 deg. 10 min. 22.897 secs.			
Job Purpose: Cement Surface Casing							
Well Type: Development Well				Job Type: Cement Surface Casing			
Sales Person: PLIENESS, RYAN				Srv Supervisor: PICKELL, CHRISTOPHER		MBU ID Emp #: 396838	
Job Personnel							
HES Emp Name	Exp Hrs	Emp #	HES Emp Name	Exp Hrs	Emp #	HES Emp Name	Exp Hrs
HERNANDEZ, ROY	0.0	123456	JEWELL, WILLIAM Uris	0.0	503358	PICKELL, CHRISTOPHER Lee	0.0
SAUCEDA, JIMMY	0.0	123457					
Equipment							
HES Unit #	Distance-1 way	HES Unit #	Distance-1 way	HES Unit #	Distance-1 way	HES Unit #	Distance-1 way
11019824C	15 mile	11605597	15 mile	11667703C	15 mile	11748359	15 mile
NA	15 mile						
Job Hours							
Date	On Location Hours	Operating Hours	Date	On Location Hours	Operating Hours	Date	On Location Hours
TOTAL		Total is the sum of each column separately					
Job				Job Times			
Formation Name				Date		Time	Time Zone
Formation Depth (MD)	Top	Bottom		Called Out	09 - Sep - 2013	22:00	MST
Form Type	BHST			On Location	10 - Sep - 2013	02:00	MST
Job depth MD	1026. ft	Job Depth TVD	1026. ft	Job Started	10 - Sep - 2013	05:30	MST
Water Depth		Wk Ht Above Floor	5. ft	Job Completed	10 - Sep - 2013	06:58	MST
Perforation Depth (MD)	From	To		Departed Loc	10 - Sep - 2013	08:00	MST
Well Data							
Description	New / Used	Max pressure psig	Size in	ID in	Weight lbm/ft	Thread	Grade
13 1/2" Open Hole Section				13.5			
9 5/8" Surface Casing	Unknown		9.625	8.921	36.		J-55
Sales/Rental/3rd Party (HES)							
Description				Qty	Qty uom	Depth	Supplier
CNTRLZR, 9 5/8x13 3/4,#500-0963-1375				3	EA		

HALLIBURTON

Tools and Accessories

Type	Size	Qty	Make	Depth	Type	Size	Qty	Make	Depth	Type	Size	Qty	Make
Guide Shoe					Packer					Top Plug			
Float Shoe					Bridge Plug					Bottom Plug			
Float Collar					Retainer					SSR plug set			
Insert Float										Plug Container			
Stage Tool										Centralizers			

Miscellaneous Materials

Gelling Agt		Conc		Surfactant		Conc		Acid Type		Qty		Conc	%
Treatment Fld		Conc		Inhibitor		Conc		Sand Type		Size		Qty	

Fluid Data

Stage/Plug #: 1

Fluid #	Stage Type	Fluid Name	Qty	Qty uom	Mixing Density lbm/gal	Yield ft ³ /sk	Mix Fluid Gal/sk	Rate bbl/min	Total Mix Fluid Gal/sk
1	Fresh Water Spacer		10.00	bbl	8.33	.0	.0	.0	
2	Mud Flush		12.00	bbl	8.4	.0	.0	.0	
	3.33 lbm/bbl	MUD FLUSH III, 40 LB SACK (101633304)							
	42 gal/bbl	MUD FLUSH III - SBM (528788)							
3	SwiftCem B2	SWIFTCM (TM) SYSTEM (452990)	436.0	sacks	14.2	1.53	7.63		7.63
	7.63 Gal	FRESH WATER							

Calculated Values

Pressures

Volumes

Displacement		Shut In: Instant		Lost Returns		Cement Slurry		Pad	
Top Of Cement		5 Min		Cement Returns		Actual Displacement		Treatment	
Frac Gradient		15 Min		Spacers		Load and Breakdown		Total Job	

Rates

Circulating		Mixing		Displacement		Avg. Job	
Cement Left In Pipe	Amount	42 ft	Reason	Shoe Joint			
Frac Ring # 1 @	ID		Frac ring # 2 @	ID		Frac Ring # 4 @	ID

The Information Stated Herein Is Correct

Customer Representative Signature