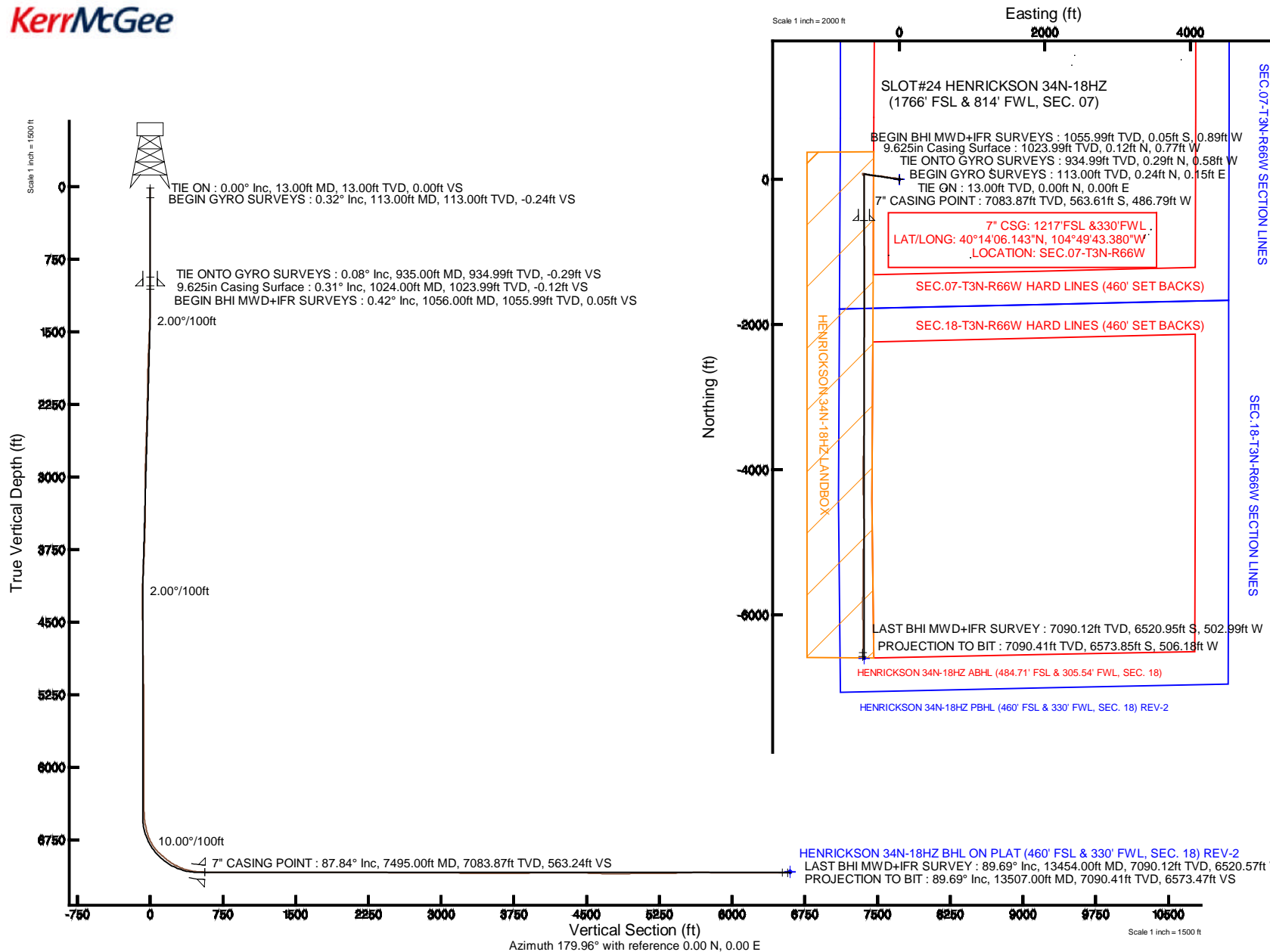


KERR-MCGEE OIL & GAS ONSHORE LP

Location: COLORADO Slot: SLOT#24 HENRICKSON 34N-18HZ (1766' FSL & 814' FWL, SEC. 07)
 Field: WELD COUNTY (KERR MCGEE) Well: HENRICKSON 34N-18HZ
 Facility: SEC.07-T3N-R66W Wellbore: HENRICKSON 34N-18HZ PWB

Plot reference wellpath is HENRICKSON 34N-18HZ (REV-B.0) PWP

True vertical depths are referenced to ENSIGN 145' (4806' 4793' GL + 13' KB) (RKB)	Grid System: NAD83 / Lambert Colorado SP, Northern Zone (501), US feet
Measured depths are referenced to ENSIGN 145' (4806' 4793' GL + 13' KB) (RKB)	North Reference: True north
ENSIGN 145' (4806' 4793' GL + 13' KB) (RKB) to Mean Sea Level: 4806 feet	Scale: True distance
Mean Sea Level to Mud line (At Slot: SLOT#24 HENRICKSON 34N-18HZ (1766' FSL & 814' FWL, SEC. 07)): 0 feet	Depths are in feet
Coordinates are in feet referenced to Slot	Created by: robale01 on 01/Nov/2013



Scale 1 inch = 1500 ft

Actual Wellpath Report

HENRICKSON 34N-18HZ AWP

Page 1 of 6

REFERENCE WELLPATH IDENTIFICATION

Operator	KERR-MCGEE OIL & GAS ONSHORE LP	Slot	SLOT#24 HENRICKSON 34N-18HZ (1766' FSL & 814' FWL, SE
Area	COLORADO	Well	HENRICKSON 34N-18HZ
Field	WELD COUNTY (KERR MCGEE)	Wellbore	HENRICKSON 34N-18HZ AWB
Facility	SEC.07-T3N-R66W		

REPORT SETUP INFORMATION

Projection System	NAD83 / Lambert Colorado SP, Northern Zone (501), US feet	Software System	WellArchitect® 4.0.0
North Reference	True	User	Robiale01
Scale	0.999957	Report Generated	01/Nov/2013 at 14:22
Convergence at slot	n/a	Database/Source file	WA_ANADARKO/HENRICKSON_34N-18HZ_AWB.xml

WELLPATH LOCATION

	Local coordinates		Grid coordinates		Geographic coordinates	
	North[ft]	East[ft]	Easting[US ft]	Northing[US ft]	Latitude	Longitude
Slot Location	-1698.64	-2413.09	3187894.99	1329743.56	40°14'11.713"N	104°49'37.103"W
Facility Reference Pt			3190294.85	1331460.62	40°14'28.500"N	104°49'05.988"W
Field Reference Pt			3197771.84	1268891.29	40°04'09.600"N	104°47'36.000"W

WELLPATH DATUM

Calculation method	Minimum curvature	ENSIGN 145' (4806': 4793' GL + 13' KB) (RKB) to Facility Vertical Datum	4806.00ft
Horizontal Reference Pt	Slot	ENSIGN 145' (4806': 4793' GL + 13' KB) (RKB) to Mean Sea Level	4806.00ft
Vertical Reference Pt	ENSIGN 145' (4806': 4793' GL + 13' KB) (RKB)	ENSIGN 145' (4806': 4793' GL + 13' KB) (RKB) to Mud Line at Slot (SLOT#24 HENRICKSON 34N-18HZ (1766' FSL & 814' FWL, SEC. 07))	4806.00ft
MD Reference Pt	ENSIGN 145' (4806': 4793' GL + 13' KB) (RKB)	Section Origin	N 0.00, E 0.00 ft
Field Vertical Reference	Mean Sea Level	Section Azimuth	179.96°

Actual Wellpath Report

HENRICKSON 34N-18HZ AWP

Page 2 of 6

REFERENCE WELLPATH IDENTIFICATION

Operator	KERR-MCGEE OIL & GAS ONSHORE LP	Slot	SLOT#24 HENRICKSON 34N-18HZ (1766' FSL & 814' FWL, SE
Area	COLORADO	Well	HENRICKSON 34N-18HZ
Field	WELD COUNTY (KERR MCGEE)	Wellbore	HENRICKSON 34N-18HZ AWP
Facility	SEC.07-T3N-R66W		

WELLPATH DATA (134 stations) † = interpolated/extrapolated station

MD [ft]	Inclination [°]	Azimuth [°]	TVD [ft]	Vert Sect [ft]	North [ft]	East [ft]	Latitude	Longitude	DLS [°/100ft]	Comments
0.00†	0.000	32.370	0.00	0.00	0.00	0.00	40°14'11.713"N	104°49'37.103"W	0.00	
13.00	0.000	32.370	13.00	0.00	0.00	0.00	40°14'11.713"N	104°49'37.103"W	0.00	TIE ON
113.00	0.320	32.370	113.00	-0.24	0.24	0.15	40°14'11.715"N	104°49'37.101"W	0.32	BEGIN GYRO SURVEYS
213.00	0.270	6.100	213.00	-0.71	0.71	0.32	40°14'11.720"N	104°49'37.099"W	0.14	
313.00	0.150	8.410	313.00	-1.07	1.07	0.37	40°14'11.724"N	104°49'37.098"W	0.12	
413.00	0.060	230.920	413.00	-1.17	1.17	0.35	40°14'11.725"N	104°49'37.099"W	0.20	
513.00	0.250	196.270	513.00	-0.92	0.92	0.24	40°14'11.722"N	104°49'37.100"W	0.20	
613.00	0.200	280.120	613.00	-0.75	0.75	0.01	40°14'11.720"N	104°49'37.103"W	0.30	
713.00	0.350	207.800	713.00	-0.51	0.51	-0.30	40°14'11.718"N	104°49'37.107"W	0.35	
813.00	0.030	111.030	812.99	-0.23	0.23	-0.42	40°14'11.715"N	104°49'37.108"W	0.35	
913.00	0.170	293.200	912.99	-0.28	0.28	-0.53	40°14'11.716"N	104°49'37.110"W	0.20	
935.00	0.080	293.950	934.99	-0.29	0.29	-0.58	40°14'11.716"N	104°49'37.110"W	0.41	TIE ONTO GYRO SURVEYS
1056.00	0.420	211.720	1055.99	0.05	-0.05	-0.89	40°14'11.713"N	104°49'37.114"W	0.34	BEGIN BHI MWD+IFR SURVEYS
1087.00	0.270	198.430	1086.99	0.21	-0.21	-0.97	40°14'11.711"N	104°49'37.115"W	0.55	
1181.00	0.570	308.580	1180.99	0.13	-0.13	-1.40	40°14'11.712"N	104°49'37.121"W	0.76	
1274.00	2.340	308.510	1273.96	-1.34	1.34	-3.25	40°14'11.726"N	104°49'37.145"W	1.90	
1368.00	4.340	296.110	1367.79	-4.10	4.10	-7.95	40°14'11.753"N	104°49'37.205"W	2.25	
1462.00	5.780	291.020	1461.43	-7.37	7.36	-15.56	40°14'11.786"N	104°49'37.304"W	1.60	
1555.00	7.550	288.550	1553.79	-11.00	10.98	-25.73	40°14'11.822"N	104°49'37.435"W	1.93	
1649.00	9.520	285.810	1646.75	-15.10	15.07	-39.06	40°14'11.862"N	104°49'37.607"W	2.14	
1743.00	11.020	285.370	1739.24	-19.61	19.57	-55.20	40°14'11.906"N	104°49'37.815"W	1.60	
1836.00	11.030	275.710	1830.53	-22.86	22.81	-72.63	40°14'11.938"N	104°49'38.039"W	1.98	
1930.00	10.320	274.030	1922.90	-24.36	24.29	-89.97	40°14'11.953"N	104°49'38.263"W	0.82	
2020.00	10.010	272.160	2011.49	-25.24	25.16	-105.83	40°14'11.962"N	104°49'38.468"W	0.50	
2110.00	11.200	277.360	2099.96	-26.66	26.57	-122.32	40°14'11.976"N	104°49'38.680"W	1.70	
2200.00	10.810	277.700	2188.30	-28.93	28.82	-139.35	40°14'11.998"N	104°49'38.900"W	0.44	
2290.00	10.820	277.650	2276.70	-31.19	31.08	-156.09	40°14'12.020"N	104°49'39.116"W	0.02	
2380.00	10.640	278.450	2365.13	-33.55	33.42	-172.68	40°14'12.043"N	104°49'39.330"W	0.26	
2470.00	10.410	279.280	2453.61	-36.10	35.95	-188.92	40°14'12.068"N	104°49'39.539"W	0.31	
2560.00	10.350	280.380	2542.14	-38.88	38.72	-204.90	40°14'12.096"N	104°49'39.745"W	0.23	
2650.00	10.440	281.200	2630.66	-41.93	41.76	-220.85	40°14'12.126"N	104°49'39.951"W	0.19	
2740.00	10.570	281.550	2719.16	-45.18	45.00	-236.94	40°14'12.158"N	104°49'40.158"W	0.16	
2830.00	11.260	276.670	2807.53	-47.86	47.67	-253.75	40°14'12.184"N	104°49'40.375"W	1.28	
2920.00	10.030	273.660	2895.98	-49.40	49.19	-270.30	40°14'12.199"N	104°49'40.588"W	1.50	
3010.00	9.660	271.590	2984.65	-50.12	49.90	-285.67	40°14'12.206"N	104°49'40.787"W	0.57	
3100.00	9.390	272.040	3073.41	-50.60	50.37	-300.56	40°14'12.211"N	104°49'40.978"W	0.31	
3190.00	9.060	271.380	3162.25	-51.04	50.81	-314.98	40°14'12.215"N	104°49'41.164"W	0.39	
3281.00	9.560	273.520	3252.05	-51.69	51.44	-329.68	40°14'12.221"N	104°49'41.354"W	0.67	
3371.00	9.020	272.470	3340.87	-52.46	52.21	-344.19	40°14'12.229"N	104°49'41.541"W	0.63	
3461.00	8.780	271.160	3429.79	-52.92	52.65	-358.11	40°14'12.233"N	104°49'41.721"W	0.35	
3549.00	9.520	274.870	3516.67	-53.68	53.40	-372.07	40°14'12.241"N	104°49'41.901"W	1.08	
3639.00	10.040	281.110	3605.36	-55.84	55.55	-387.19	40°14'12.262"N	104°49'42.096"W	1.31	
3730.00	11.010	281.950	3694.83	-59.18	58.87	-403.47	40°14'12.295"N	104°49'42.305"W	1.08	
3820.00	10.070	280.980	3783.31	-62.47	62.15	-419.61	40°14'12.327"N	104°49'42.514"W	1.06	
3910.00	10.920	287.400	3871.81	-66.53	66.20	-435.47	40°14'12.367"N	104°49'42.718"W	1.60	

Actual Wellpath Report

HENRICKSON 34N-18HZ AWP

Page 3 of 6

REFERENCE WELLPATH IDENTIFICATION

Operator	KERR-MCGEE OIL & GAS ONSHORE LP	Slot	SLOT#24 HENRICKSON 34N-18HZ (1766' FSL & 814' FWL, SE
Area	COLORADO	Well	HENRICKSON 34N-18HZ
Field	WELD COUNTY (KERR MCGEE)	Wellbore	HENRICKSON 34N-18HZ AWP
Facility	SEC.07-T3N-R66W		

WELLPATH DATA (134 stations) † = interpolated/extrapolated station

MD [ft]	Inclination [°]	Azimuth [°]	TVD [ft]	Vert Sect [ft]	North [ft]	East [ft]	Latitude	Longitude	DLS [°/100ft]	Comments
4000.00	11.030	287.320	3960.16	-71.65	71.31	-451.82	40°14'12.418"N	104°49'42.929"W	0.12	
4090.00	10.160	285.540	4048.62	-76.35	76.00	-467.69	40°14'12.464"N	104°49'43.133"W	1.03	
4180.00	8.600	280.880	4137.42	-79.76	79.40	-481.94	40°14'12.498"N	104°49'43.317"W	1.93	
4270.00	6.170	274.830	4226.67	-81.45	81.08	-493.37	40°14'12.514"N	104°49'43.465"W	2.83	
4360.00	4.360	260.620	4316.29	-81.30	80.93	-501.57	40°14'12.513"N	104°49'43.570"W	2.46	
4450.00	2.530	244.690	4406.12	-79.90	79.52	-506.74	40°14'12.499"N	104°49'43.637"W	2.28	
4540.00	0.660	189.020	4496.09	-78.54	78.16	-508.62	40°14'12.485"N	104°49'43.661"W	2.47	
4630.00	1.690	117.740	4586.07	-77.41	77.03	-507.52	40°14'12.474"N	104°49'43.647"W	1.78	
4990.00	1.440	131.280	4945.94	-71.95	71.57	-499.43	40°14'12.420"N	104°49'43.543"W	0.12	
5351.00	1.170	156.340	5306.85	-65.58	65.21	-494.54	40°14'12.357"N	104°49'43.480"W	0.17	
5441.00	0.590	14.310	5396.84	-65.18	64.81	-494.05	40°14'12.353"N	104°49'43.473"W	1.86	
5801.00	0.420	121.410	5756.83	-66.29	65.92	-492.47	40°14'12.364"N	104°49'43.453"W	0.23	
6161.00	0.740	111.190	6116.81	-64.76	64.39	-489.18	40°14'12.349"N	104°49'43.411"W	0.09	
6444.00	0.060	235.340	6399.81	-64.01	63.65	-487.59	40°14'12.342"N	104°49'43.390"W	0.27	
6476.00	0.030	230.680	6431.81	-64.00	63.63	-487.61	40°14'12.342"N	104°49'43.390"W	0.09	
6521.00	1.700	182.360	6476.80	-63.33	62.96	-487.65	40°14'12.335"N	104°49'43.391"W	3.73	
6566.00	6.750	174.900	6521.66	-60.02	59.66	-487.44	40°14'12.302"N	104°49'43.388"W	11.26	
6611.00	8.420	175.650	6566.27	-54.10	53.74	-486.96	40°14'12.244"N	104°49'43.382"W	3.72	
6656.00	10.130	177.040	6610.68	-46.86	46.50	-486.50	40°14'12.172"N	104°49'43.376"W	3.83	
6701.00	14.130	179.420	6654.66	-37.42	37.05	-486.24	40°14'12.079"N	104°49'43.373"W	8.96	
6746.00	18.880	179.080	6697.80	-24.64	24.27	-486.07	40°14'11.953"N	104°49'43.371"W	10.56	
6791.00	23.620	178.290	6739.73	-8.33	7.97	-485.69	40°14'11.792"N	104°49'43.366"W	10.55	
6836.00	28.840	178.220	6780.08	11.54	-11.90	-485.08	40°14'11.595"N	104°49'43.358"W	11.60	
6881.00	34.470	178.190	6818.37	35.13	-35.50	-484.34	40°14'11.362"N	104°49'43.348"W	12.51	
6926.00	40.810	178.320	6853.98	62.59	-62.95	-483.50	40°14'11.091"N	104°49'43.337"W	14.09	
6971.00	46.730	179.320	6886.47	93.70	-94.06	-482.88	40°14'10.783"N	104°49'43.329"W	13.24	
7016.00	48.580	180.280	6916.78	126.96	-127.32	-482.77	40°14'10.455"N	104°49'43.328"W	4.40	
7061.00	50.560	180.290	6945.96	161.21	-161.57	-482.94	40°14'10.116"N	104°49'43.330"W	4.40	
7106.00	54.500	181.700	6973.33	196.91	-197.27	-483.57	40°14'09.764"N	104°49'43.338"W	9.10	
7151.00	59.290	181.350	6997.90	234.58	-234.94	-484.57	40°14'09.391"N	104°49'43.351"W	10.66	
7196.00	63.780	180.930	7019.34	274.12	-274.48	-485.35	40°14'09.001"N	104°49'43.361"W	10.01	
7241.00	66.890	180.720	7038.12	315.00	-315.37	-485.94	40°14'08.597"N	104°49'43.369"W	6.92	
7286.00	71.900	179.810	7053.95	357.11	-357.48	-486.13	40°14'08.180"N	104°49'43.371"W	11.29	
7331.00	77.700	179.270	7065.74	400.52	-400.88	-485.78	40°14'07.751"N	104°49'43.367"W	12.94	
7376.00	81.250	180.620	7073.96	444.75	-445.12	-485.74	40°14'07.314"N	104°49'43.366"W	8.42	
7422.00	84.200	180.790	7079.79	490.37	-490.74	-486.30	40°14'06.864"N	104°49'43.373"W	6.42	
7446.00	86.940	180.420	7081.64	514.30	-514.66	-486.55	40°14'06.627"N	104°49'43.377"W	11.52	
7495.00†	87.841	180.131	7083.87	563.24	-563.61	-486.79	40°14'06.143"N	104°49'43.380"W	1.93	7" CASING POINT
7614.00	90.030	179.430	7086.08	682.22	-682.58	-486.33	40°14'04.968"N	104°49'43.374"W	1.93	
7708.00	89.500	178.590	7086.47	776.20	-776.56	-484.71	40°14'04.039"N	104°49'43.353"W	1.06	
7801.00	90.030	177.950	7086.85	869.16	-869.52	-481.90	40°14'03.120"N	104°49'43.317"W	0.89	
7895.00	89.960	177.840	7086.86	963.10	-963.46	-478.45	40°14'02.192"N	104°49'43.272"W	0.14	
7988.00	89.840	180.160	7087.02	1056.08	-1056.44	-476.82	40°14'01.273"N	104°49'43.251"W	2.50	
8078.00	89.870	180.180	7087.25	1146.08	-1146.44	-477.09	40°14'00.384"N	104°49'43.254"W	0.04	
8258.00	90.000	179.980	7087.45	1326.08	-1326.44	-477.34	40°13'58.605"N	104°49'43.258"W	0.13	

Actual Wellpath Report

HENRICKSON 34N-18HZ AWP

Page 4 of 6

REFERENCE WELLPATH IDENTIFICATION

Operator	KERR-MCGEE OIL & GAS ONSHORE LP	Slot	SLOT#24 HENRICKSON 34N-18HZ (1766' FSL & 814' FWL, SE
Area	COLORADO	Well	HENRICKSON 34N-18HZ
Field	WELD COUNTY (KERR MCGEE)	Wellbore	HENRICKSON 34N-18HZ AWP
Facility	SEC.07-T3N-R66W		

WELLPATH DATA (134 stations)

MD [ft]	Inclination [°]	Azimuth [°]	TVD [ft]	Vert Sect [ft]	North [ft]	East [ft]	Latitude	Longitude	DLS [°/100ft]	Comments
8438.00	89.870	179.760	7087.66	1506.08	-1506.43	-476.93	40°13'56.826"N	104°49'43.252"W	0.14	
8618.00	90.240	180.150	7087.48	1686.08	-1686.43	-476.79	40°13'55.048"N	104°49'43.250"W	0.30	
8798.00	89.810	179.910	7087.41	1866.07	-1866.43	-476.89	40°13'53.269"N	104°49'43.252"W	0.27	
8978.00	90.210	180.860	7087.37	2046.07	-2046.43	-478.10	40°13'51.490"N	104°49'43.267"W	0.57	
9158.00	90.120	181.150	7086.86	2226.04	-2226.40	-481.25	40°13'49.712"N	104°49'43.308"W	0.17	
9338.00	89.380	181.110	7087.64	2406.00	-2406.36	-484.80	40°13'47.933"N	104°49'43.354"W	0.41	
9518.00	89.500	180.110	7089.40	2585.97	-2586.34	-486.72	40°13'46.155"N	104°49'43.378"W	0.56	
9698.00	89.560	179.360	7090.88	2765.96	-2766.33	-485.89	40°13'44.376"N	104°49'43.367"W	0.42	
9878.00	89.780	179.860	7091.91	2945.96	-2946.32	-484.66	40°13'42.598"N	104°49'43.352"W	0.30	
10064.00	89.720	180.450	7092.73	3131.95	-3132.32	-485.17	40°13'40.760"N	104°49'43.358"W	0.32	
10244.00	89.560	179.870	7093.86	3311.95	-3312.31	-485.67	40°13'38.981"N	104°49'43.364"W	0.33	
10425.00	89.440	180.630	7095.44	3492.94	-3493.30	-486.46	40°13'37.192"N	104°49'43.375"W	0.43	
10515.00	89.900	181.060	7095.95	3582.92	-3583.29	-487.79	40°13'36.303"N	104°49'43.392"W	0.70	
10605.00	90.460	180.970	7095.67	3672.91	-3673.28	-489.38	40°13'35.414"N	104°49'43.412"W	0.63	
10695.00	89.590	182.150	7095.63	3762.87	-3763.24	-491.83	40°13'34.525"N	104°49'43.444"W	1.63	
10785.00	91.600	182.270	7094.70	3852.79	-3853.16	-495.30	40°13'33.636"N	104°49'43.489"W	2.24	
10875.00	91.210	180.460	7092.49	3942.73	-3943.11	-497.44	40°13'32.747"N	104°49'43.516"W	2.06	
10965.00	91.140	179.790	7090.64	4032.71	-4033.09	-497.64	40°13'31.858"N	104°49'43.519"W	0.75	
11055.00	90.980	179.320	7088.98	4122.70	-4123.07	-496.94	40°13'30.969"N	104°49'43.510"W	0.55	
11145.00	90.120	179.580	7088.12	4212.69	-4213.06	-496.08	40°13'30.080"N	104°49'43.498"W	1.00	
11235.00	89.530	178.730	7088.39	4302.68	-4303.05	-494.75	40°13'29.191"N	104°49'43.481"W	1.15	
11325.00	88.910	179.230	7089.62	4392.65	-4393.03	-493.15	40°13'28.301"N	104°49'43.461"W	0.88	
11415.00	87.900	178.810	7092.12	4482.61	-4482.98	-491.61	40°13'27.413"N	104°49'43.441"W	1.22	
11505.00	87.810	178.560	7095.49	4572.52	-4572.89	-489.54	40°13'26.524"N	104°49'43.414"W	0.30	
11595.00	88.080	178.610	7098.72	4662.44	-4662.80	-487.32	40°13'25.635"N	104°49'43.385"W	0.31	
11685.00	89.340	179.190	7100.74	4752.40	-4752.76	-485.60	40°13'24.746"N	104°49'43.363"W	1.54	
11775.00	91.320	180.420	7100.22	4842.39	-4842.75	-485.29	40°13'23.857"N	104°49'43.359"W	2.59	
11865.00	90.980	181.300	7098.42	4932.36	-4932.73	-486.64	40°13'22.968"N	104°49'43.377"W	1.05	
11956.00	90.610	182.920	7097.16	5023.28	-5023.65	-489.99	40°13'22.070"N	104°49'43.420"W	1.83	
12046.00	89.590	183.270	7097.00	5113.15	-5113.52	-494.85	40°13'21.182"N	104°49'43.482"W	1.20	
12136.00	89.650	180.460	7097.60	5203.08	-5203.46	-497.78	40°13'20.293"N	104°49'43.520"W	3.12	
12226.00	91.420	180.040	7096.76	5293.08	-5293.45	-498.17	40°13'19.403"N	104°49'43.525"W	2.02	
12316.00	91.720	179.520	7094.29	5383.04	-5383.42	-497.83	40°13'18.514"N	104°49'43.521"W	0.67	
12406.00	91.560	179.870	7091.71	5473.00	-5473.38	-497.35	40°13'17.625"N	104°49'43.514"W	0.43	
12496.00	91.900	179.820	7089.00	5562.96	-5563.34	-497.10	40°13'16.736"N	104°49'43.511"W	0.38	
12586.00	90.540	180.960	7087.08	5652.94	-5653.31	-497.72	40°13'15.847"N	104°49'43.519"W	1.97	
12676.00	88.760	181.820	7087.63	5742.90	-5743.28	-499.90	40°13'14.958"N	104°49'43.547"W	2.20	
12766.00	89.440	181.790	7089.04	5832.84	-5833.22	-502.73	40°13'14.069"N	104°49'43.584"W	0.76	
12856.00	89.530	179.430	7089.85	5922.83	-5923.21	-503.69	40°13'13.180"N	104°49'43.596"W	2.62	
12946.00	89.090	178.230	7090.94	6012.80	-6013.18	-501.85	40°13'12.291"N	104°49'43.572"W	1.42	
13036.00	90.400	178.390	7091.34	6102.76	-6103.14	-499.20	40°13'11.402"N	104°49'43.538"W	1.47	
13126.00	90.490	178.680	7090.64	6192.73	-6193.11	-496.90	40°13'10.513"N	104°49'43.509"W	0.34	
13454.00	89.690	183.450	7090.12	6520.57	-6520.95	-502.99	40°13'07.273"N	104°49'43.587"W	1.47	LAST BHI MWD+IFR SURVEY
13507.00	89.690	183.450	7090.41	6573.47	-6573.85	-506.18	40°13'06.751"N	104°49'43.628"W	0.00	PROJECTION TO BIT

REFERENCE WELLPATH IDENTIFICATION

Operator	KERR-MCGEE OIL & GAS ONSHORE LP	Slot	SLOT#24 HENRICKSON 34N-18HZ (1766' FSL & 814' FWL, SE
Area	COLORADO	Well	HENRICKSON 34N-18HZ
Field	WELD COUNTY (KERR MCGEE)	Wellbore	HENRICKSON 34N-18HZ AWB
Facility	SEC.07-T3N-R66W		

HOLE & CASING SECTIONS - Ref Wellbore: HENRICKSON 34N-18HZ AWB Ref Wellpath: HENRICKSON 34N-18HZ AWP

String/Diameter	Start MD [ft]	End MD [ft]	Interval [ft]	Start TVD [ft]	End TVD [ft]	Start N/S [ft]	Start E/W [ft]	End N/S [ft]	End E/W [ft]
13.5in Open Hole	13.00	1024.00	1011.00	13.00	1023.99	0.00	0.00	0.12	-0.77
9.625in Casing Surface	13.00	1024.00	1011.00	13.00	1023.99	0.00	0.00	0.12	-0.77
8.75in Open Hole	1024.00	7505.00	6481.00	1023.99	7084.23	0.12	-0.77	-573.60	-486.81
7in Casing Intermediate	13.00	7495.00	7482.00	13.00	7083.87	0.00	0.00	-563.61	-486.79
6.125in Open Hole	7505.00	13507.00	6002.00	7084.23	7090.41	-573.60	-486.81	-6573.85	-506.18

TARGETS

Name	MD [ft]	TVD [ft]	North [ft]	East [ft]	Grid East [US ft]	Grid North [US ft]	Latitude	Longitude	Shape
SEC.07-T3N-R66W HARD LINES (460' SET BACKS)		4806.00	0.02	0.02	3187895.01	1329743.58	40°14'11.713"N	104°49'37.103"W	polygon
SEC.07-T3N-R66W SECTION LINES		4806.00	0.02	0.02	3187895.01	1329743.58	40°14'11.713"N	104°49'37.103"W	polygon
SEC.18-T3N-R66W HARD LINES (460' SET BACKS)		4806.00	0.02	0.02	3187895.01	1329743.58	40°14'11.713"N	104°49'37.103"W	polygon
SEC.18-T3N-R66W SECTION LINES		4806.00	-11584.92	2754.14	3190736.85	1318180.40	40°12'17.230"N	104°49'01.607"W	polygon
HENRICKSON 34N-18HZ BHL ON PLAT (460' FSL & 330' FWL, SEC. 18) REV-1		7076.00	-6598.60	-481.74	3187463.37	1323141.78	40°13'06.506"N	104°49'43.313"W	point
HENRICKSON 34N-18HZ LANDBOX		7076.00	0.02	0.02	3187895.01	1329743.58	40°14'11.713"N	104°49'37.103"W	polygon
HENRICKSON 34N-18HZ BHL ON PLAT (460' FSL & 330' FWL, SEC. 18) REV-2		7086.00	-6598.56	-481.72	3187463.38	1323141.83	40°13'06.506"N	104°49'43.313"W	point

WELLPATH COMPOSITION - Ref Wellbore: HENRICKSON 34N-18HZ AWB Ref Wellpath: HENRICKSON 34N-18HZ AWP

Start MD [ft]	End MD [ft]	Positional Uncertainty Model	Log Name/Comment	Wellbore
13.00	935.00	Generic gyro - continuous (Standard)	MS ENERGY SERVICES GYRO SURVEYS <113-935>	HENRICKSON 34N-18HZ AWB
935.00	7446.00	NaviTrak (MAGCORR,IFR)	BHI MWD+IFR SURVEYS 8 3/4" HOLE <1056-7446>	HENRICKSON 34N-18HZ AWB
7446.00	13454.00	OnTrak (MAGCORR,IFR)	BHI MWD+IFR SURVEYS 6 1/8" HOLE <7614-13454>	HENRICKSON 34N-18HZ AWB
13454.00	13507.00	Blind Drilling (std)	Projection to bit	HENRICKSON 34N-18HZ AWB

Actual Wellpath Report

HENRICKSON 34N-18HZ AWP

Page 6 of 6

REFERENCE WELLPATH IDENTIFICATION

Operator	KERR-MCGEE OIL & GAS ONSHORE LP	Slot	SLOT#24 HENRICKSON 34N-18HZ (1766' FSL & 814' FWL, SE
Area	COLORADO	Well	HENRICKSON 34N-18HZ
Field	WELD COUNTY (KERR MCGEE)	Wellbore	HENRICKSON 34N-18HZ AWB
Facility	SEC.07-T3N-R66W		

WELLPATH COMMENTS

MD [ft]	Inclination [°]	Azimuth [°]	TVD [ft]	Comment
13.00	0.000	32.370	13.00	TIE ON
113.00	0.320	32.370	113.00	BEGIN GYRO SURVEYS
935.00	0.080	293.950	934.99	TIE ONTO GYRO SURVEYS
1056.00	0.420	211.720	1055.99	BEGIN BHI MWD+IFR SURVEYS
7495.00	87.841	180.131	7083.87	7" CASING POINT
13454.00	89.690	183.450	7090.12	LAST BHI MWD+IFR SURVEY
13507.00	89.690	183.450	7090.41	PROJECTION TO BIT