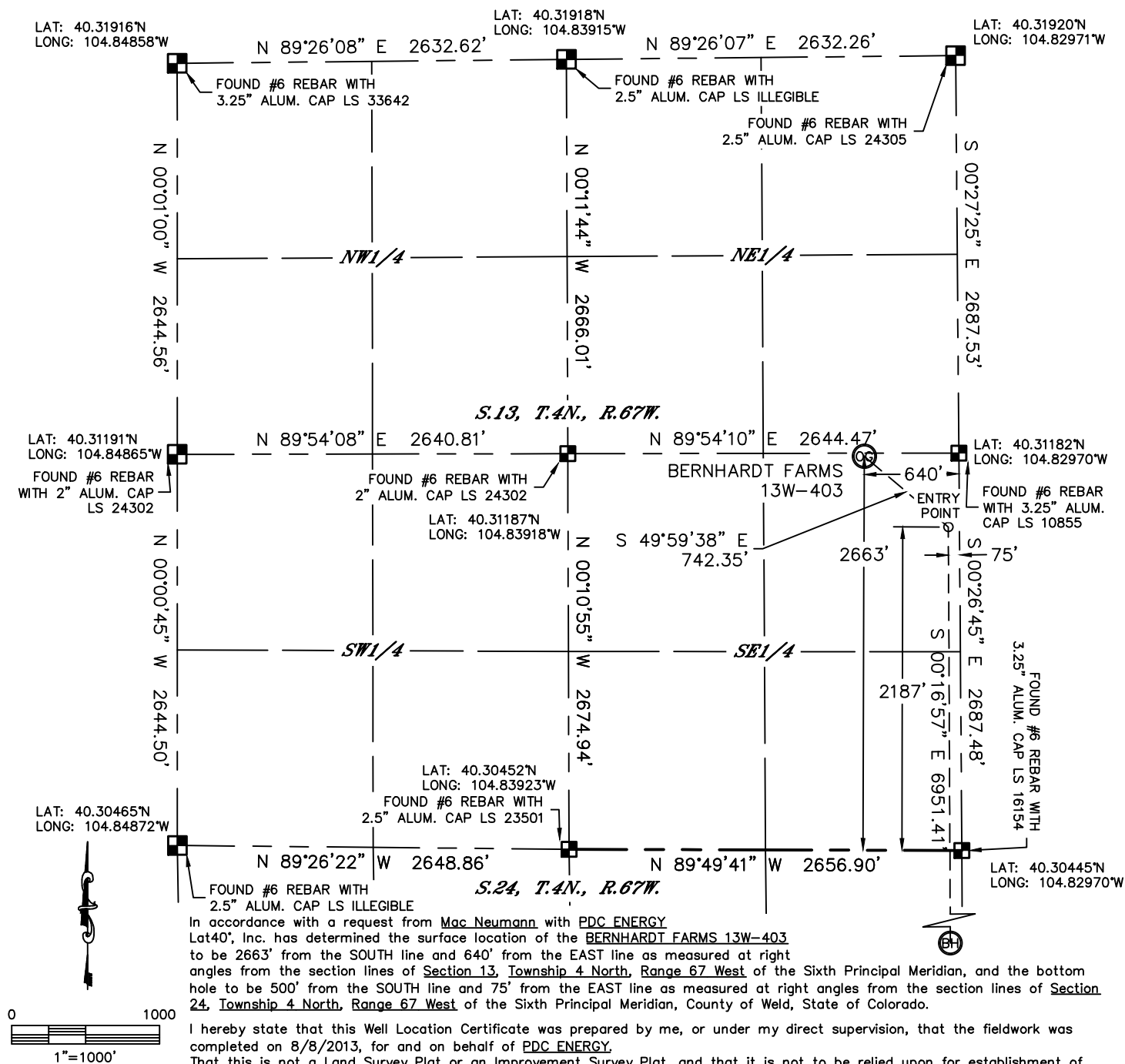


Lat40°, Inc. 1635 Foxtrail Drive, Suite 325 Loveland, CO 970-776-3321



WELL LOCATION CERTIFICATE

THIS MAP DOES NOT REPRESENT A BOUNDARY SURVEY

SECTION: 13
TOWNSHIP: 4N
RANGE: 67W



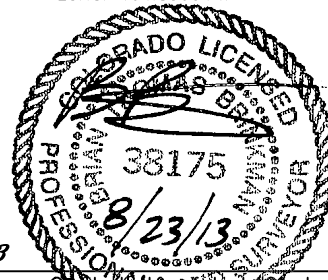
NOTE:

- 1) Bearings shown are Grid Bearings of the Colorado State Plane Coordinate System, North Zone, North American Datum 1983/2007. The lineal dimensions as contained herein are based upon the "U.S. Survey Foot."
- 2) Ground elevations are based on an observed GPS elevation (NAVD 1988 DATUM).
- 3) IMPROVEMENTS: See LOCATION DRAWING for all visible improvements within 500' of disturbed area.
- 4) SURFACE USE: CROP LAND
- 5) INSTRUMENT OPERATOR: BRIAN ROTTINGHAUS
- 6) NEAREST CULTURAL ITEMS:
- BUILDING: 1390' NE
BUILDING UNIT: 1390' NE
HIGH OCCUPANCY BUILDING UNIT: $\pm 4301'$ NW
DESIGNATED OUTSIDE ACTIVITY AREA: $\pm 4082'$ NW
PUBLIC ROAD: 2670' N
ABOVE-GROUND UTILITY: 541' E
RAILROAD: 253' NW
PROPERTY LINE: 415' E
- LEGEND
-  = ALIQUOT MONUMENT
-  = CALCULATED POSITION

SURFACE LOCATION
LAT: 40.31177°N
LONG: 104.83200°W
PDOP: 1.9
ELEV: 4737'
1/4,1/4: NE1/4SE1/4

ENTRY POINT
LAT: 40.31045°N
LONG: 104.82997°W

BOTTOM HOLE
LAT: 40.29138°N
LONG: 104.83004°W



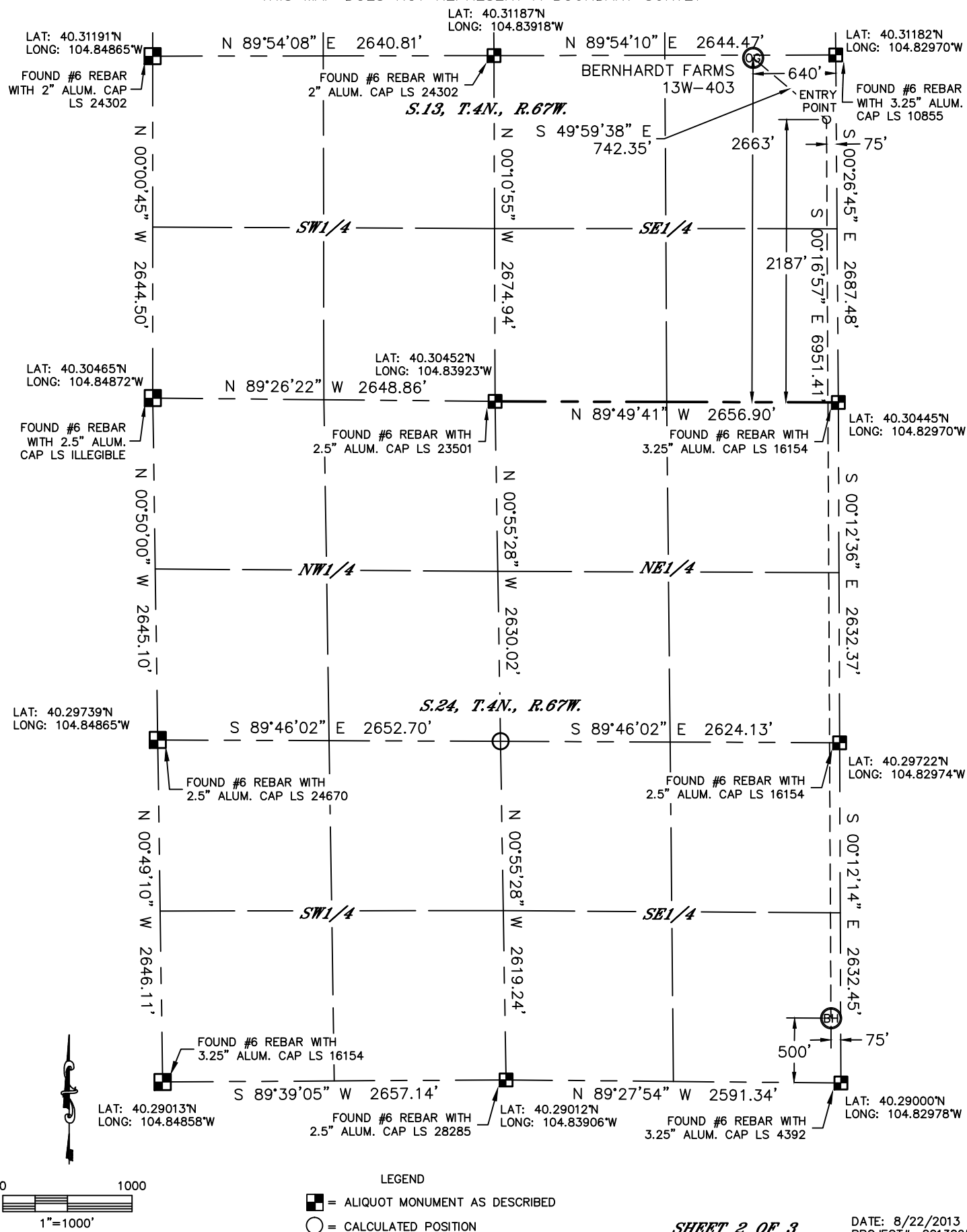
SHEET 1 OF 3

Brian T. Brinkman—On behalf of L&L 40, Inc.
Colorado Licensed Professional Land Surveyor No. 38175
DATE: 8/22/2013
PROJECT#: 2013095

WELL LOCATION CERTIFICATE

THIS MAP DOES NOT REPRESENT A BOUNDARY SURVEY

SECTION: 13
TOWNSHIP: 4N
RANGE: 67W



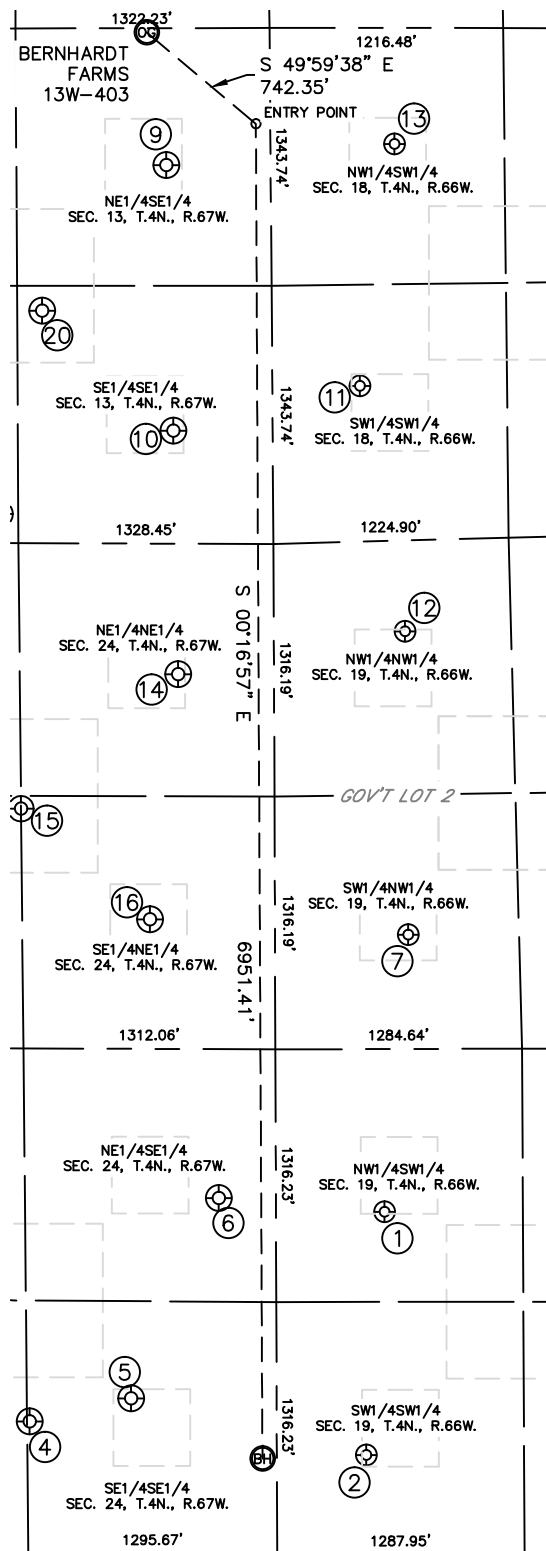


Lat40°, Inc. 1635 Foxtrail Drive, Suite 325 Loveland, CO 970-776-3321

SITE SKETCH

BERNHARDT FARMS 13W-403

SECTION: 13
TOWNSHIP: 4N
RANGE: 67W



WELL NO.	WELL NAME	SHL FOOTAGE				SHL LAT°	SHL LONG°	PDOP	ELEV (FT.)	1/4,1/4
1	EATON 12-19	1785	FSL	564	FWL	40.29489	-104.82773	2.4	4722	NWSW
2	GUTFELDER AMOCO 14-19	519	FSL	465	FWL	40.29141	-104.82810	2.5	4744	SWSW
4	JOHNSTON 5	683	FSL	1287	FEL	40.29193	-104.83438	2.7	4725	SESE
5	JOHNSTON 44-24	808	FSL	759	FEL	40.29225	-104.83248	2.7	4724	SESE
6	JOHNSTON 43-24	1856	FSL	297	FEL	40.29511	-104.83082	2.3	4723	NESE
7	JOHNSTON 12-19	2053	FNL	693	FWL	40.29885	-104.82725	2.4	4721	SWNW
9	BOUGE 1	1971	FSL	544	FEL	40.30987	-104.83165	2.0	4715	NESE
10	MESHA 1	587	FSL	518	FEL	40.30607	-104.83156	1.9	4717	SESE
11	MONTGOMERY 1-27	811	FSL	456	FWL	40.30670	-104.82807	1.9	4717	SWSW
12	BERNHARDT AMOCO 11-19	473	FNL	683	FWL	40.30318	-104.82726	2.5	4718	NWNW
13	BERNHARDT 18-32	2065	FSL	646	FWL	40.31015	-104.82739	2.9	4714	NWSW
14	KRISTIN 1	680	FNL	500	FEL	40.30260	-104.83150	2.2	4719	NENE
15	BERNHARDT 24C	1383	FNL	1320	FEL	40.30069	-104.83445	1.8	4721	SENE
16	SARAH 1	1958	FNL	651	FEL	40.29909	-104.83206	2.2	4721	SENE
20	BERNHARDT 13D	1210	FSL	1195	FEL	40.30780	-104.83399	2.3	4716	SESE

