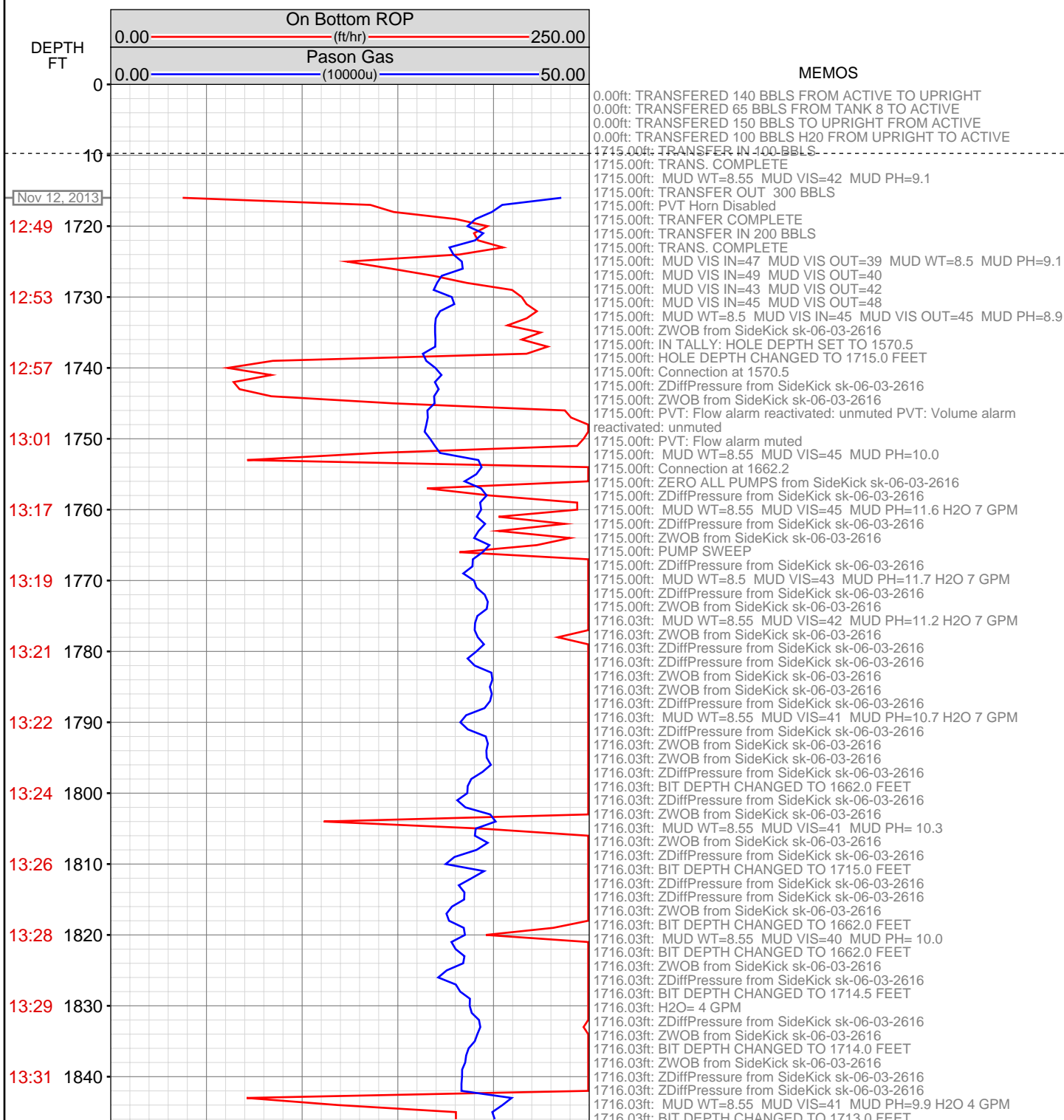


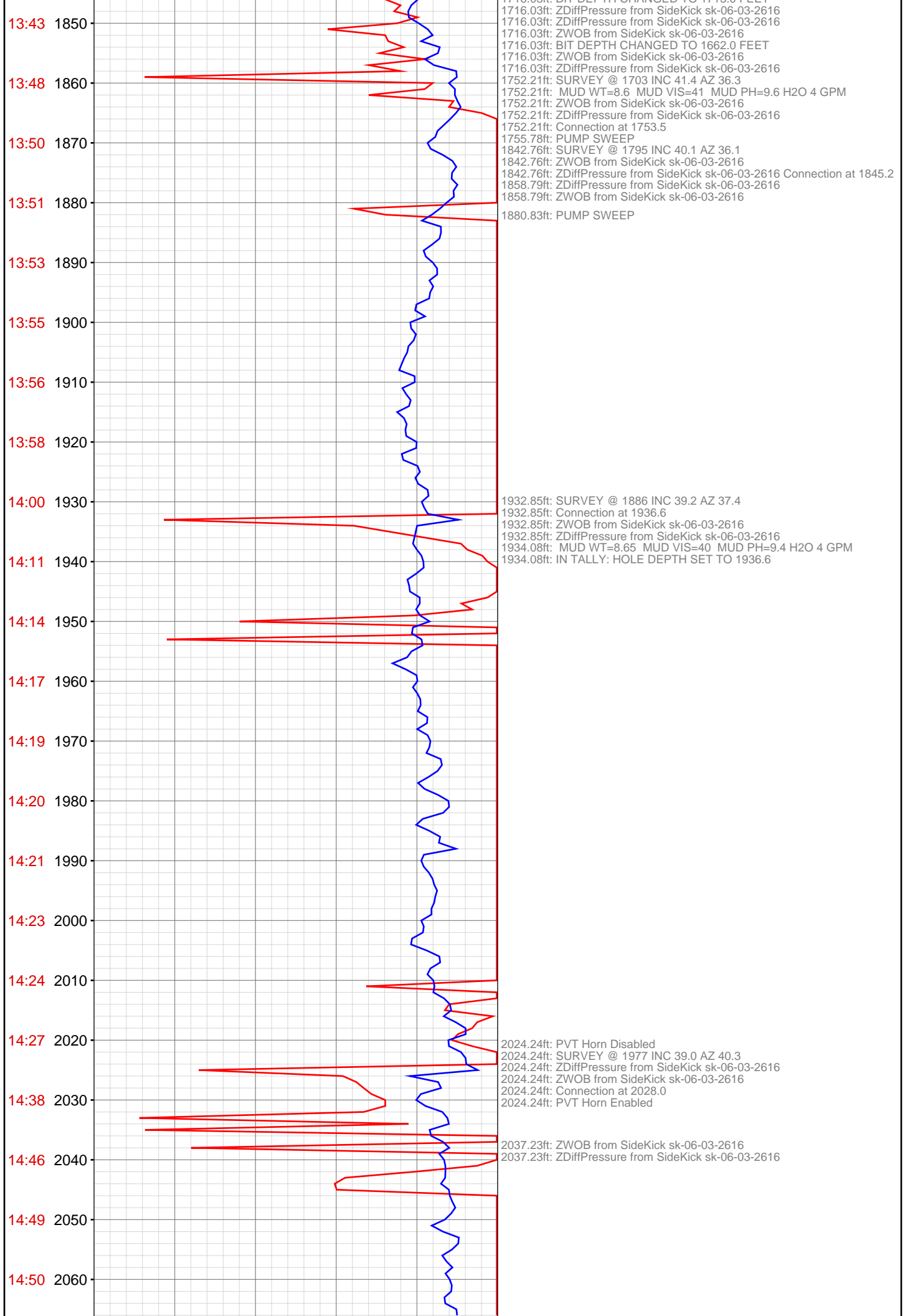
DataHub EDR Log

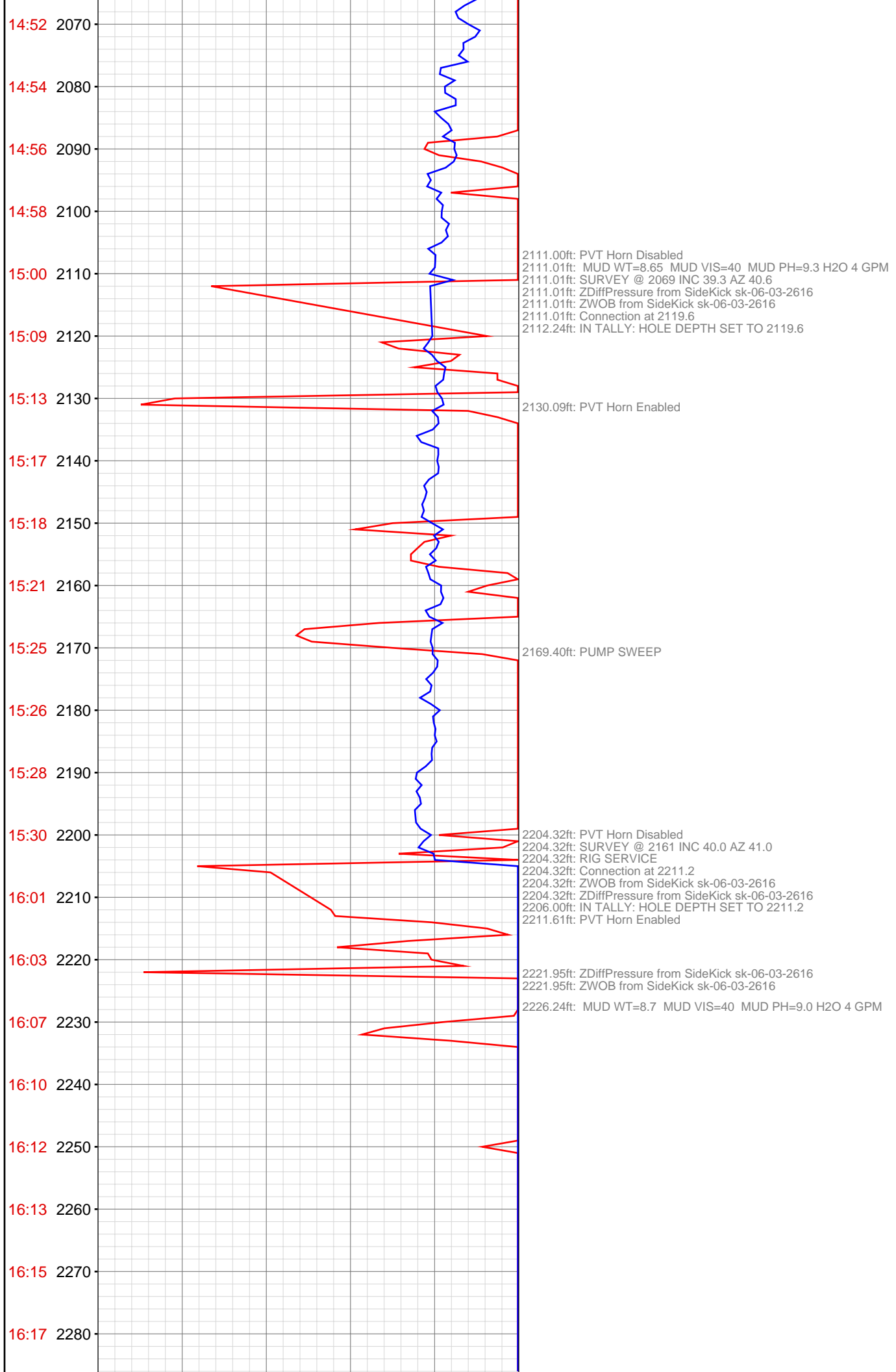
Mon Nov 18, 2013 08:34:05
Well Dossier 1384182127
Greg Veregin

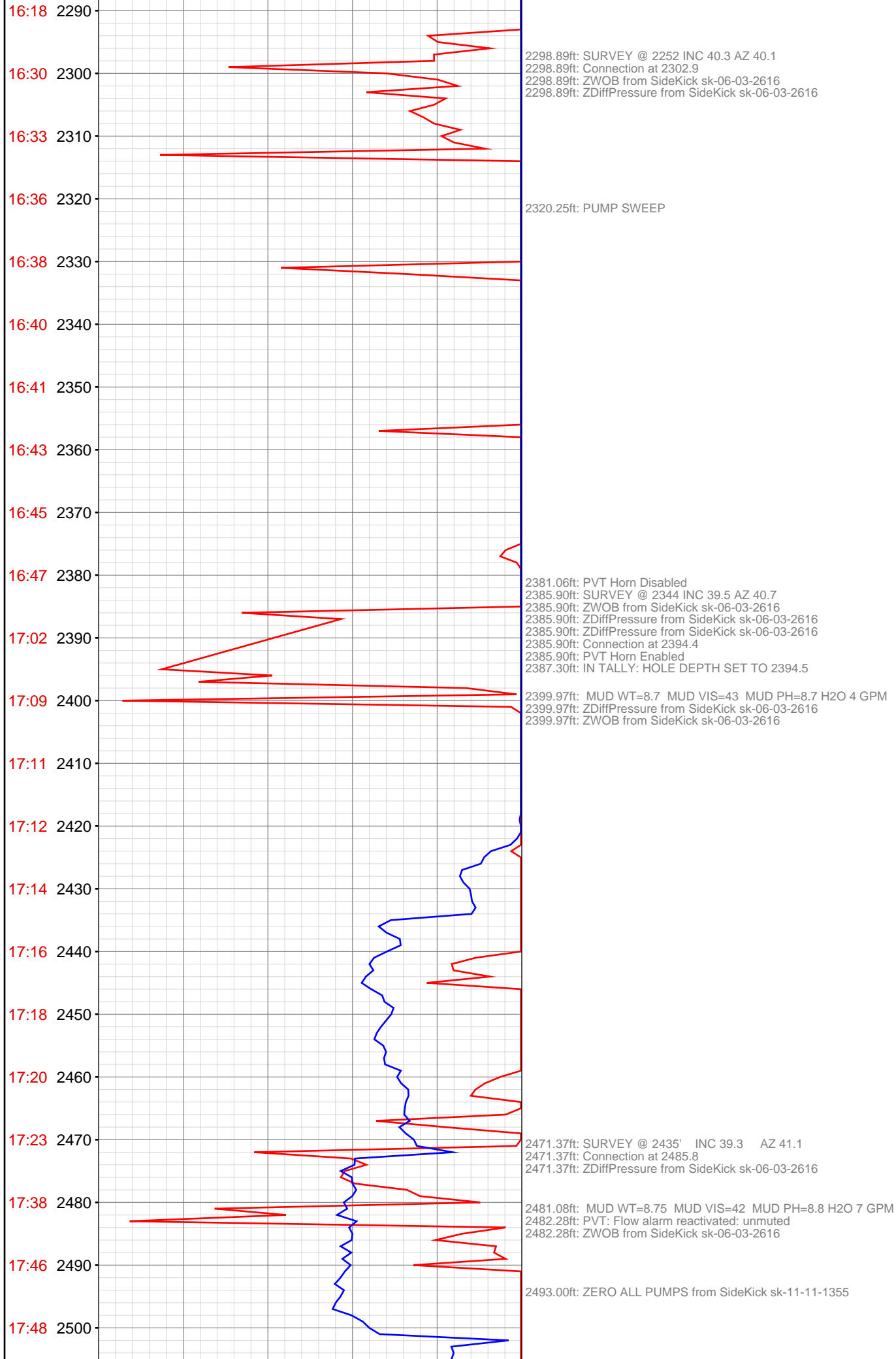
OPERATOR: EnCana Oil & Gas (USA), Inc.
WELL: FEDERAL 31-2B
FIELD:
LOCATION: SEC 31, T007S, R95W
COUNTRY: USA
RIG: Pat-UTI 308

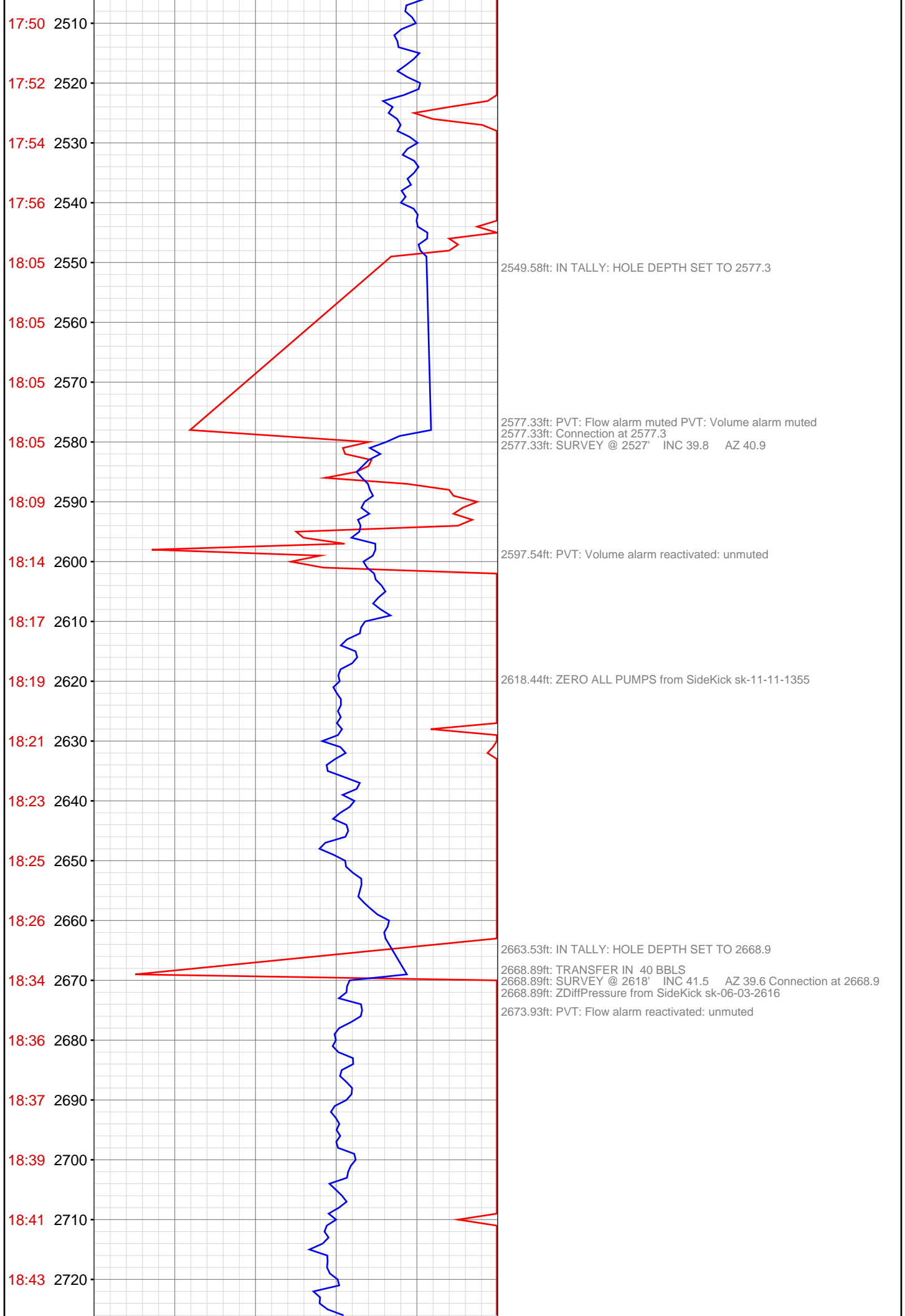
CONTRACTOR: Patterson-UTI Drilling Company
UNIQUE WELL ID: 05-045-20513
SPUD DATE: Nov 12, 2013 12:30
RELEASE DATE: Nov 17, 2013 17:00

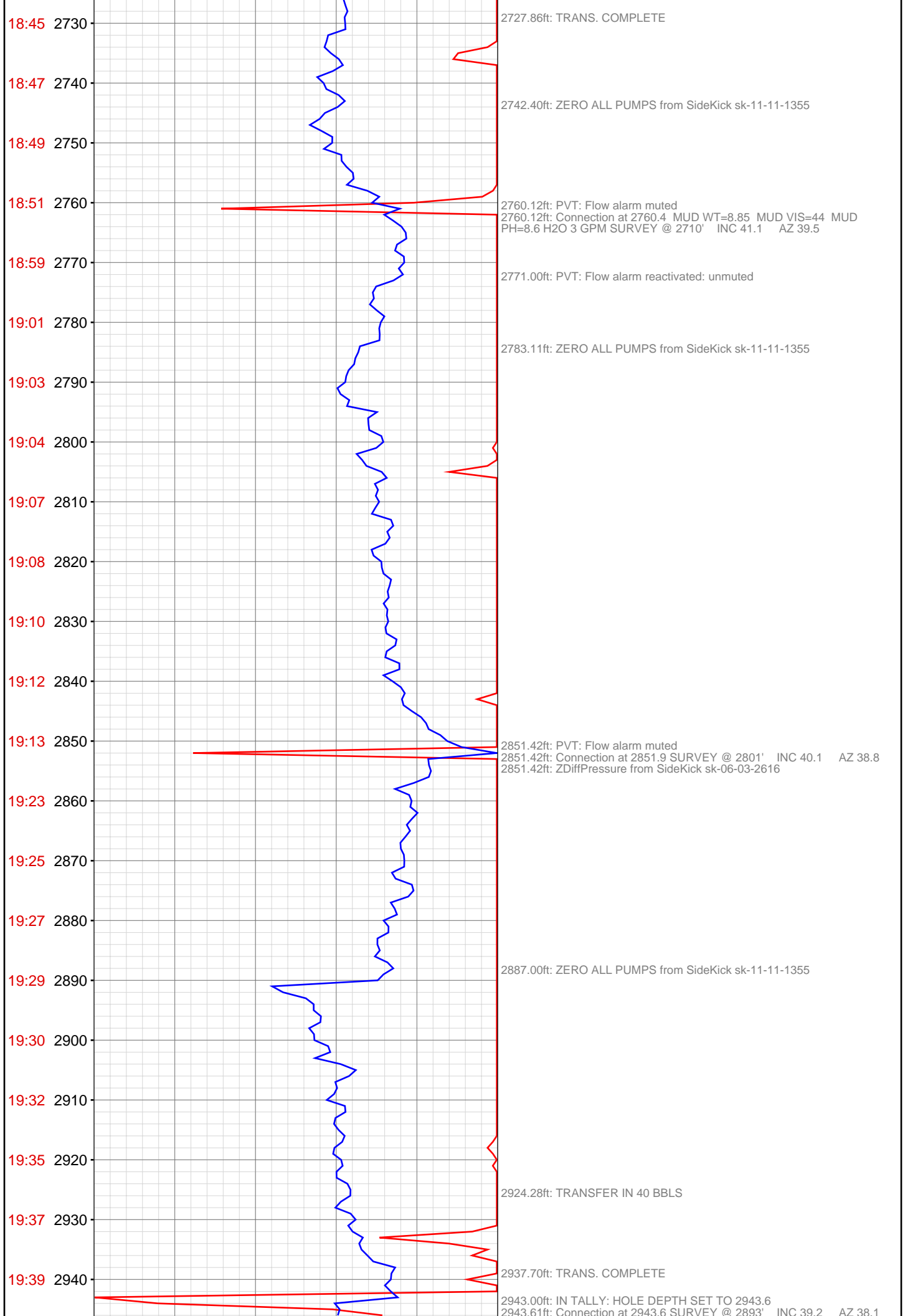


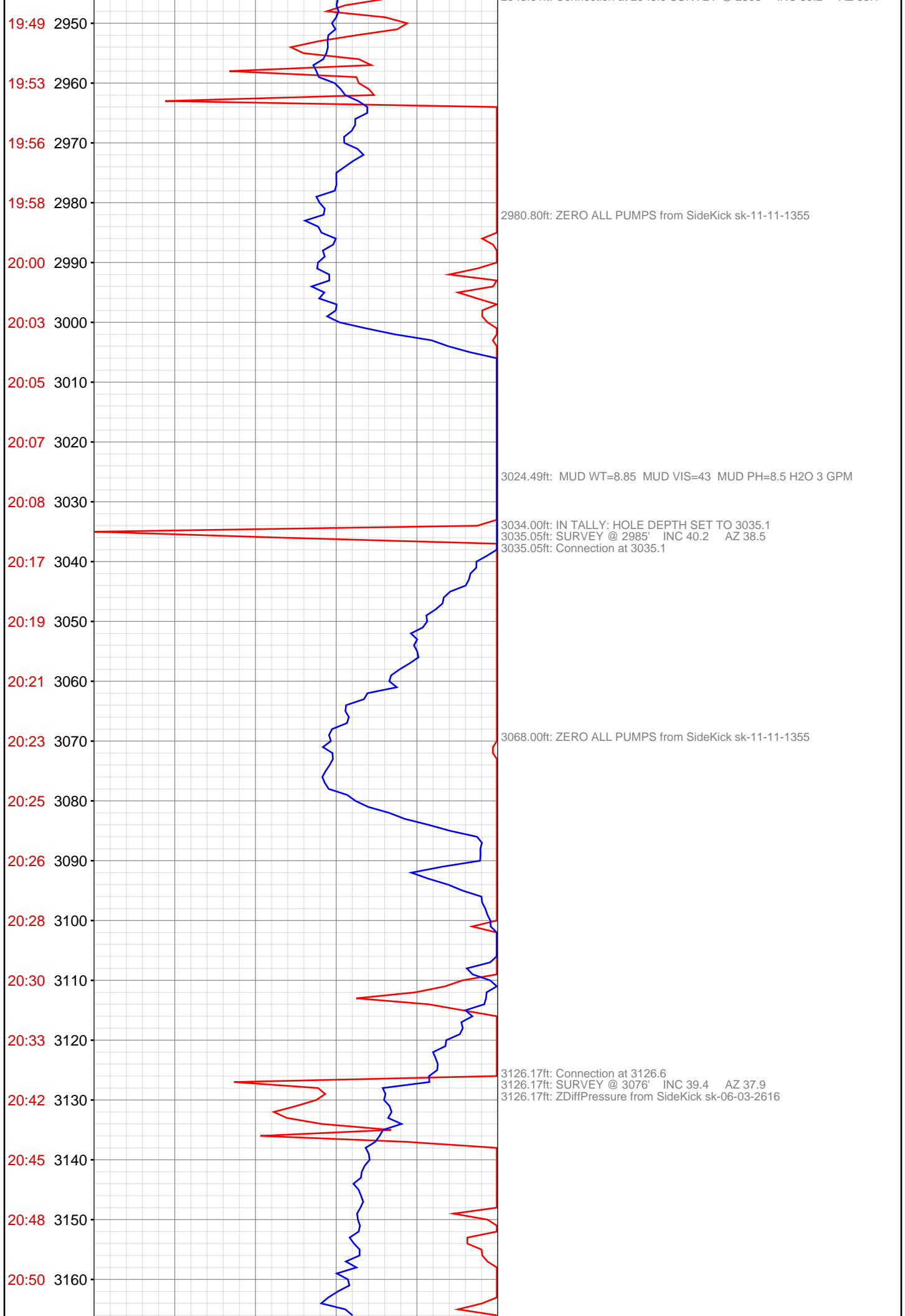


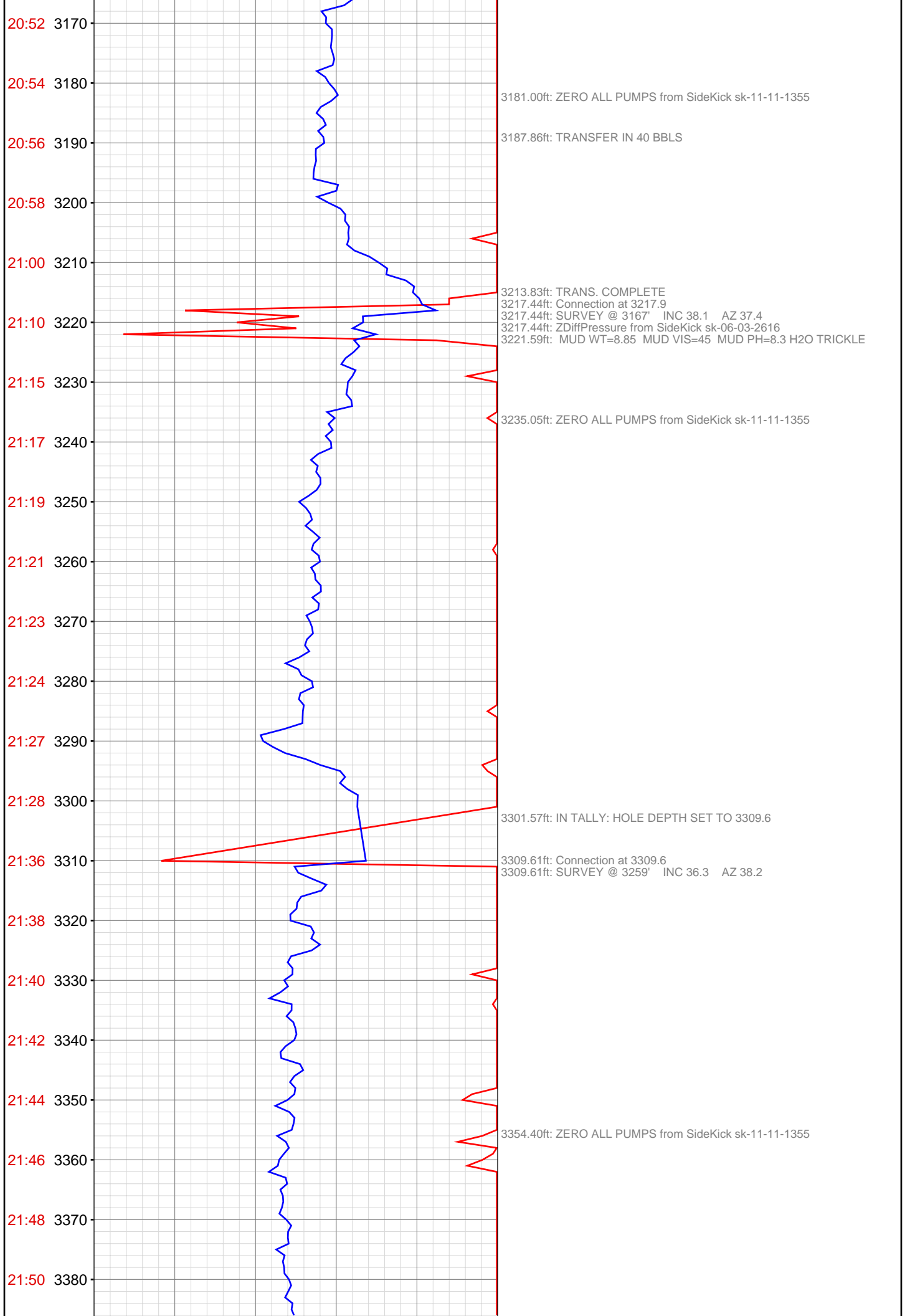


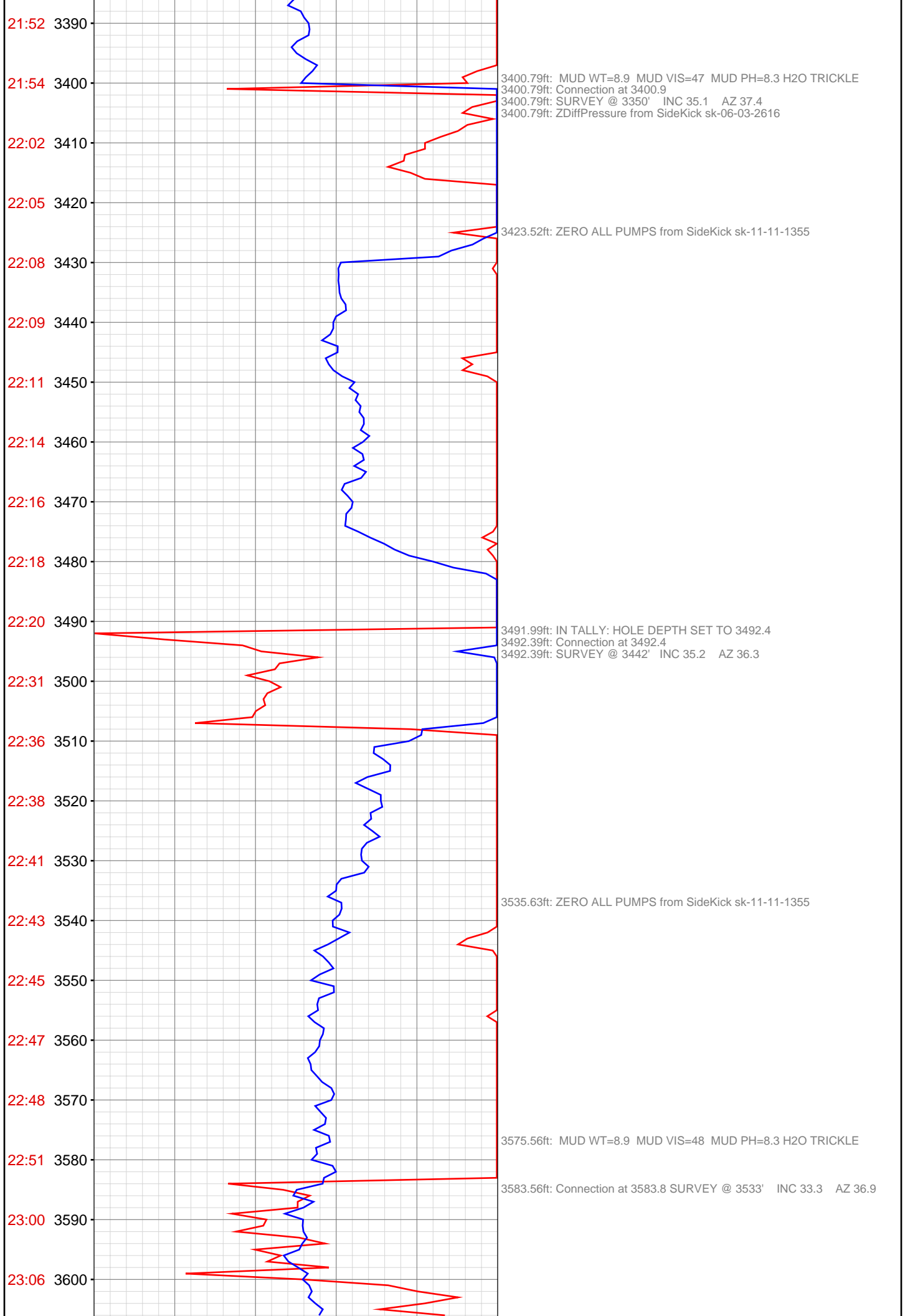


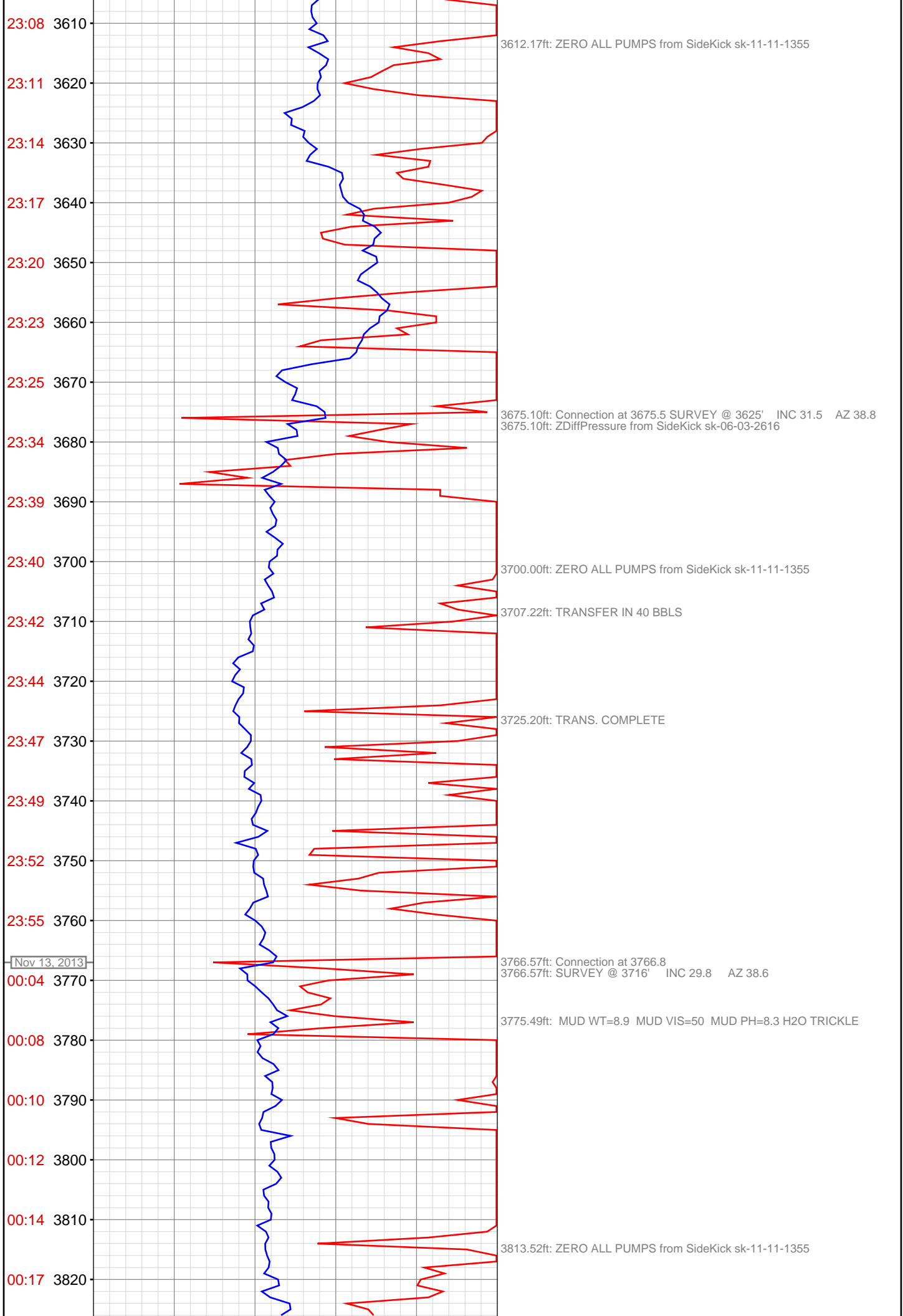


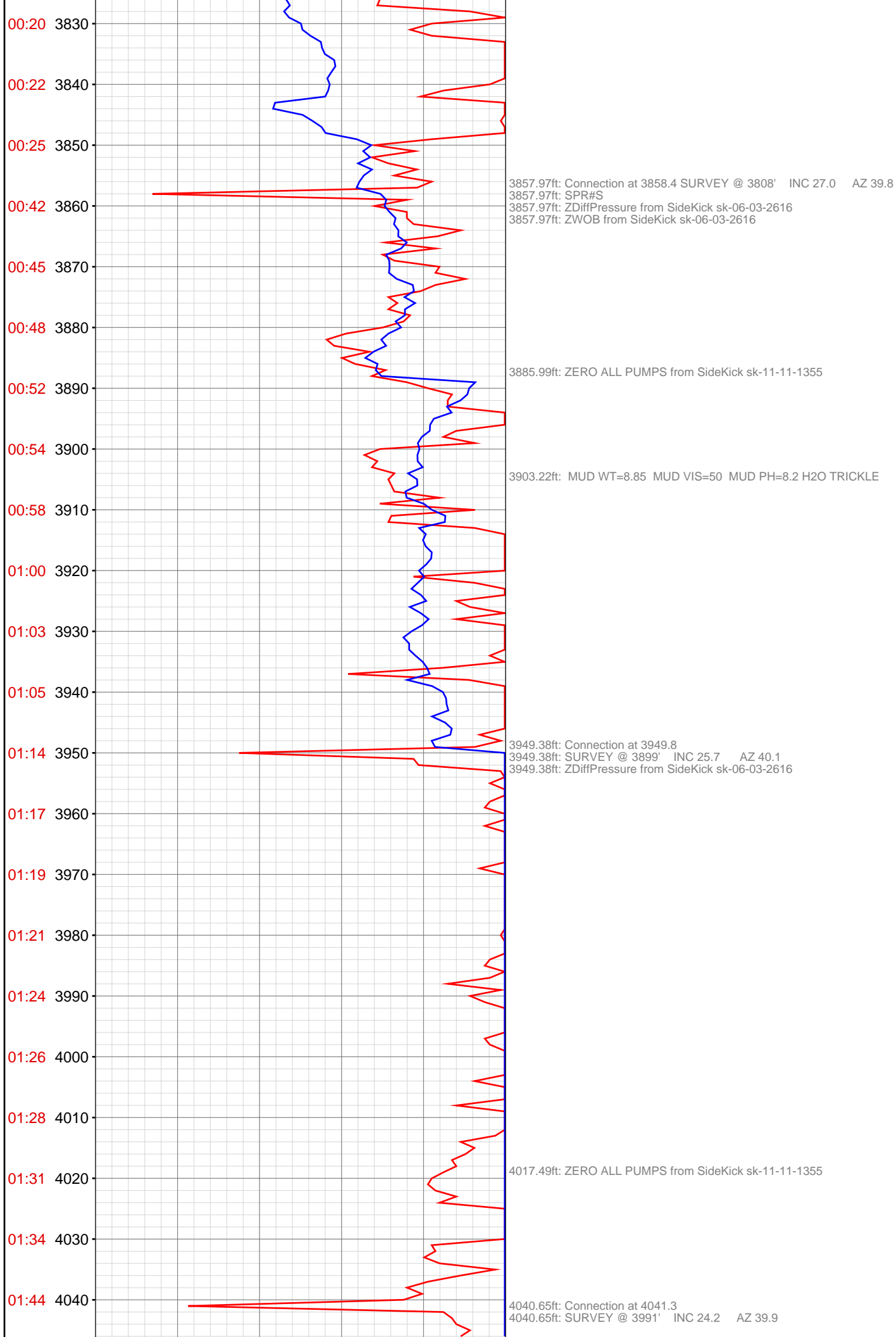


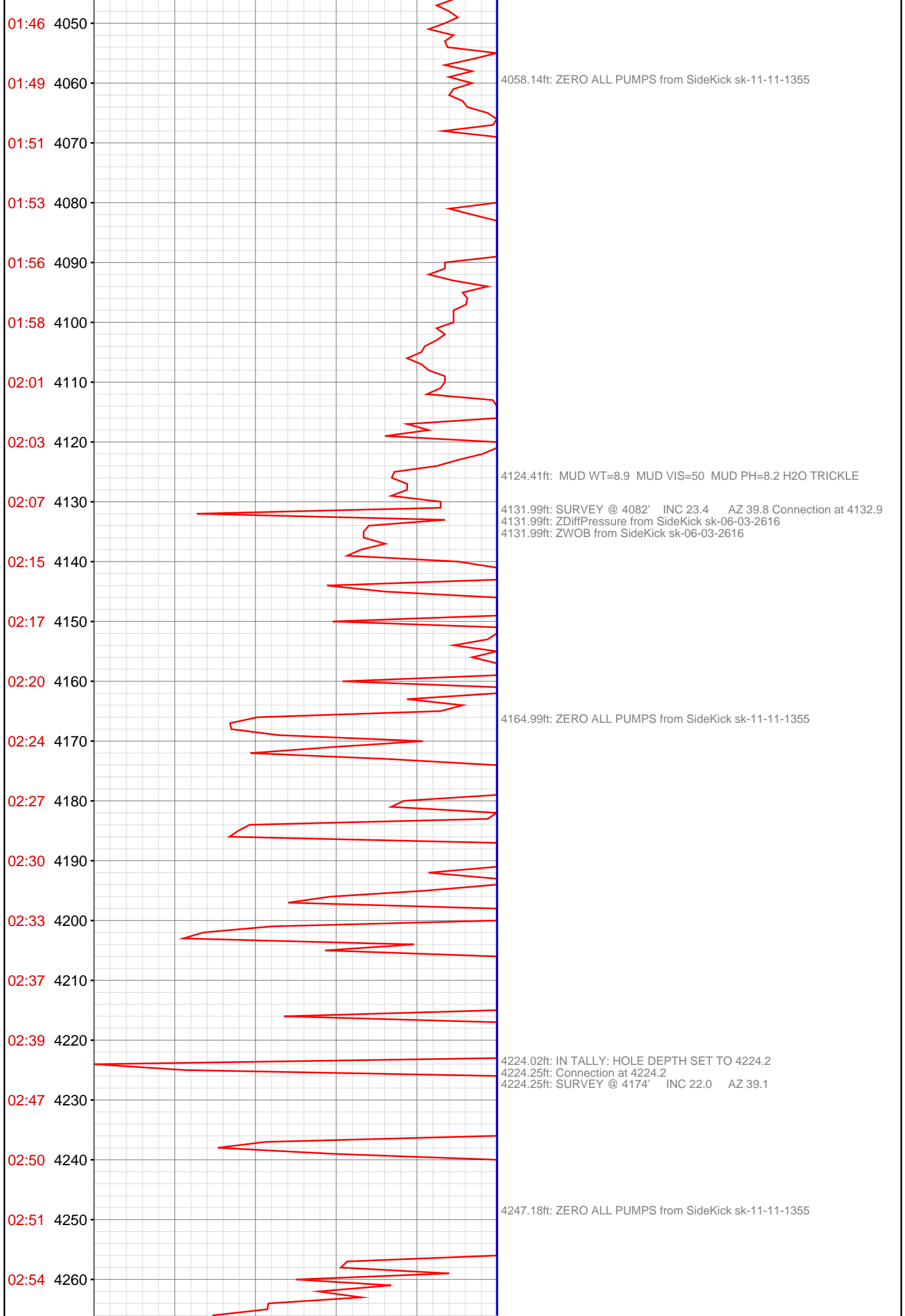


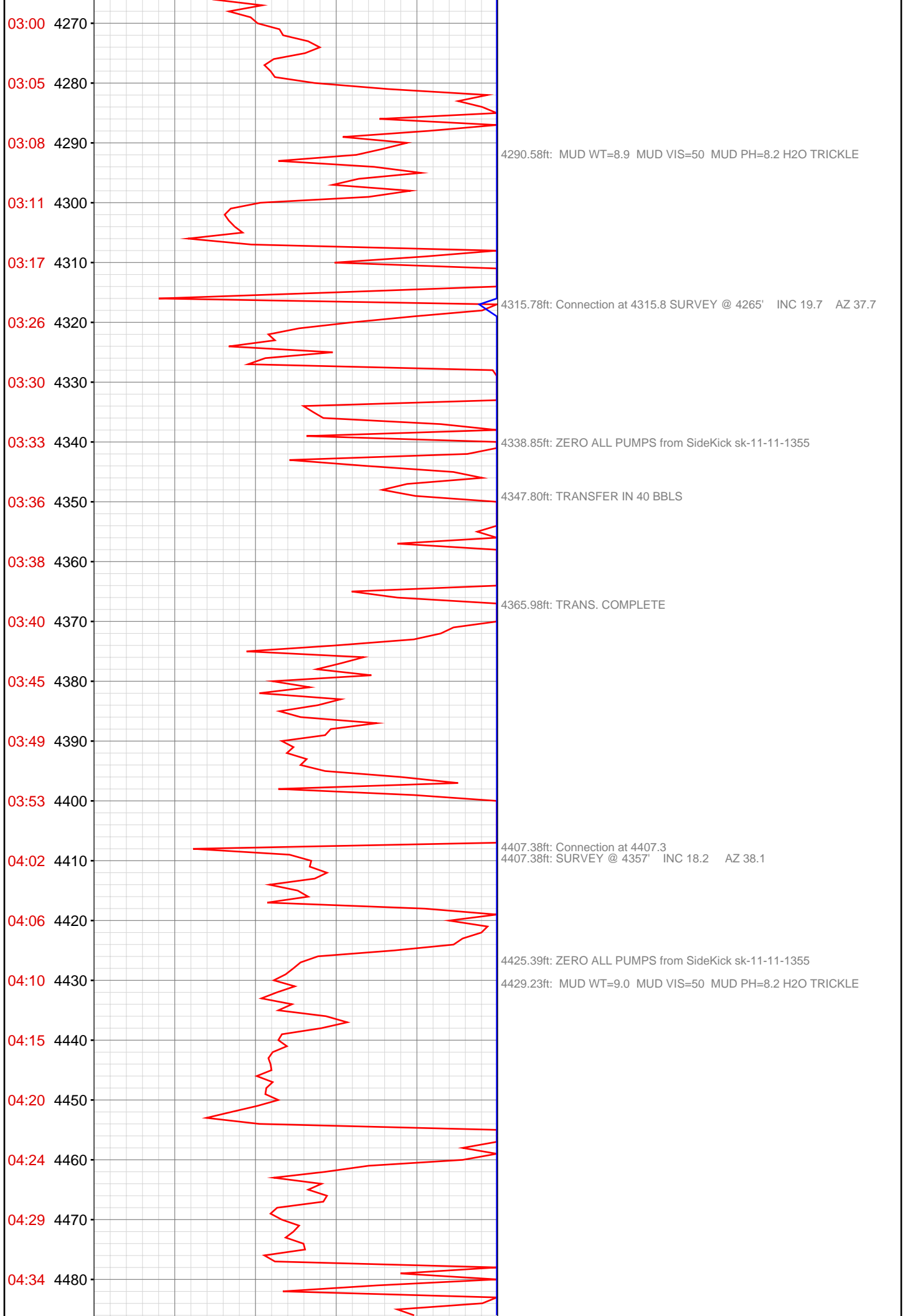


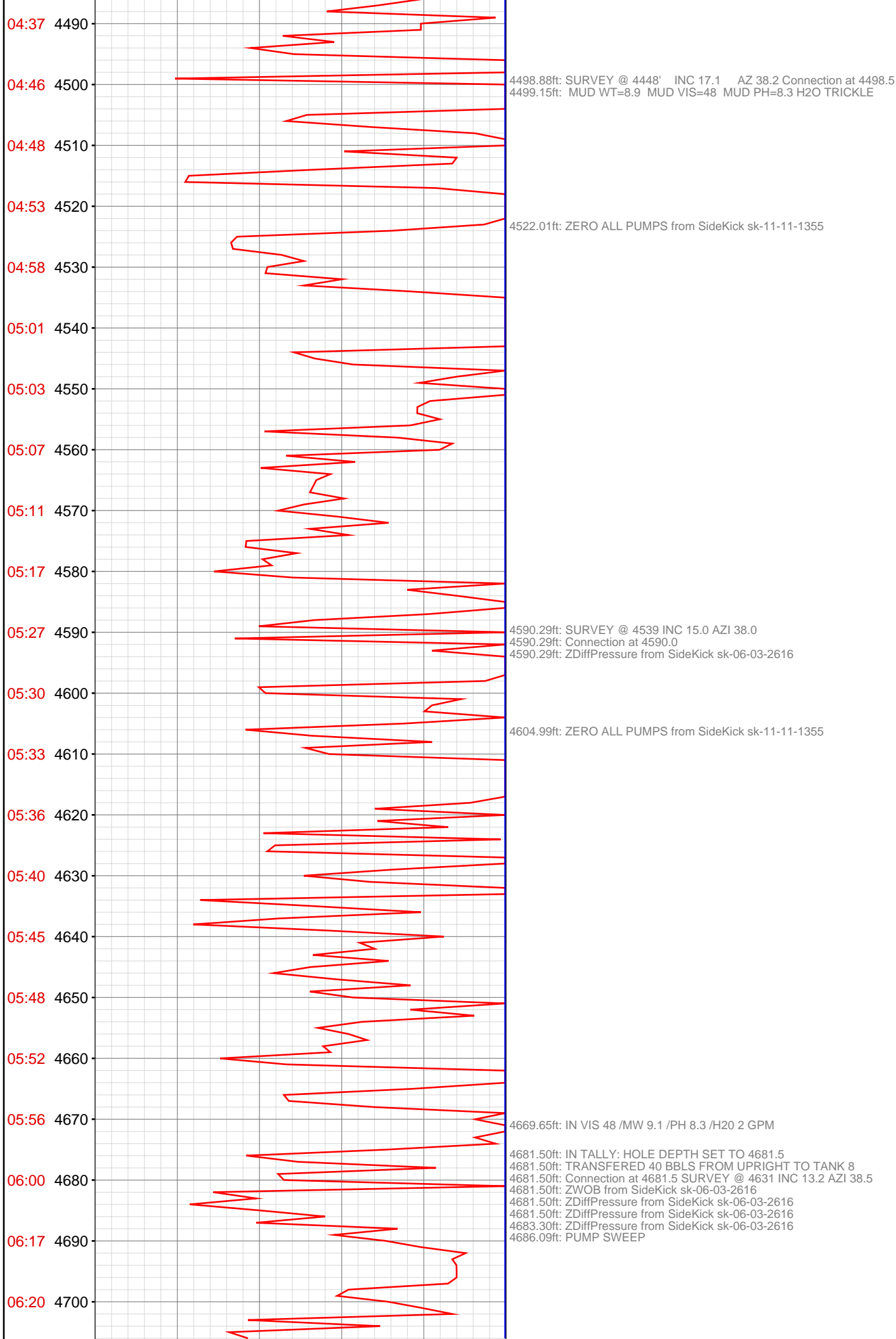


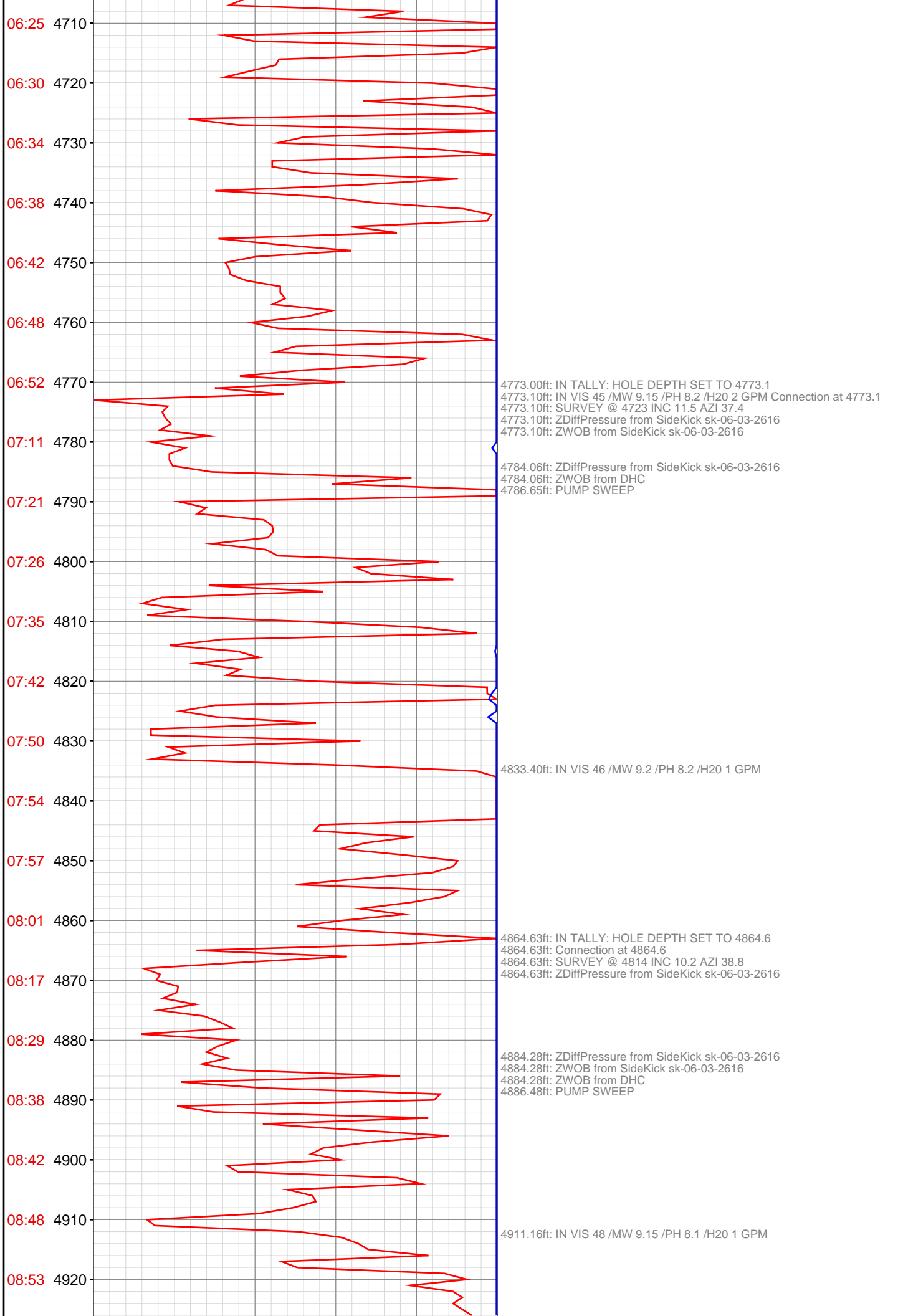


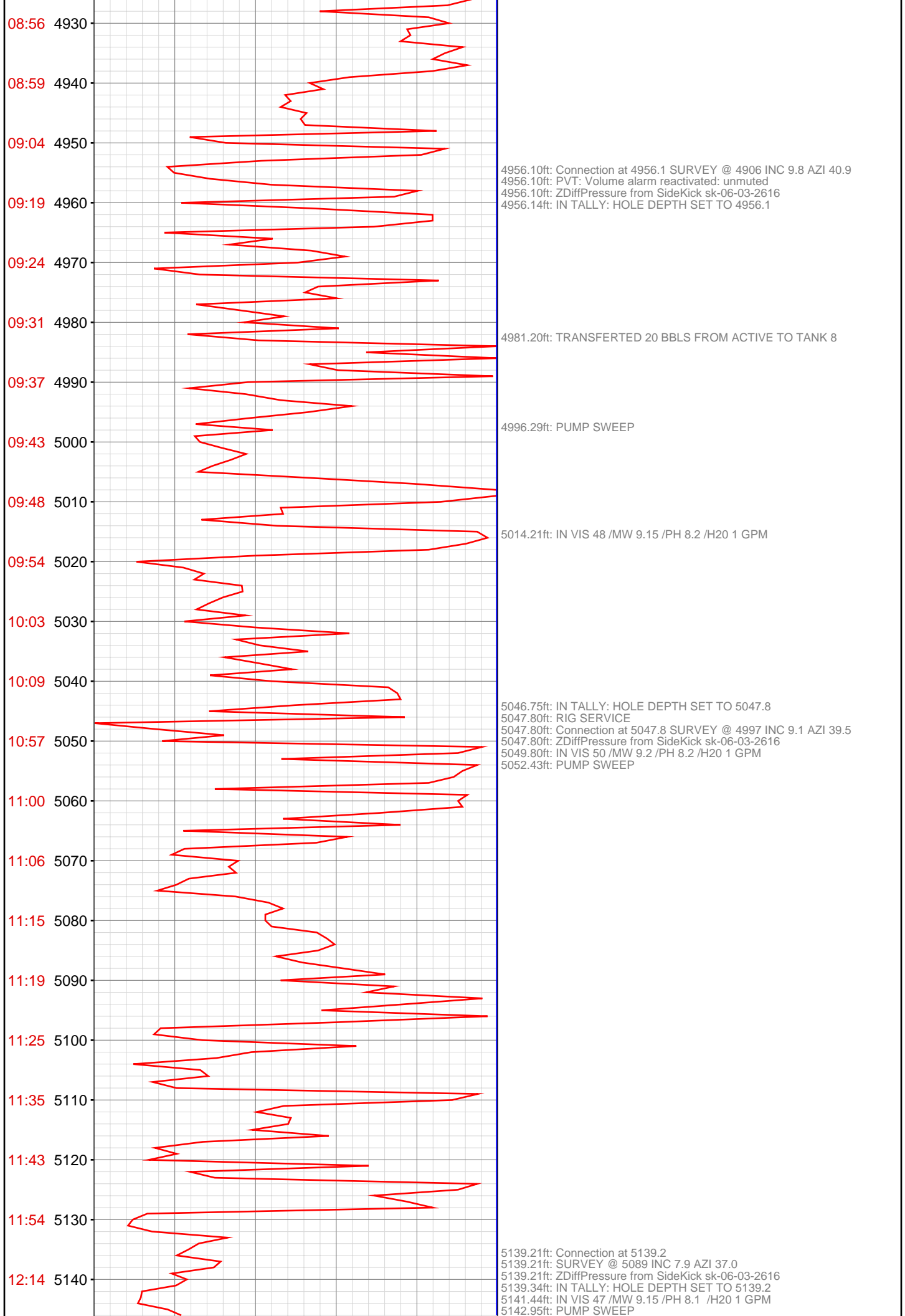












5145.28ft: TRANSFERED 40 BBLS FROM UPRIGHT TO TANK 8

5196.56ft: IN OUT VIS 50/50 /MW 9.15/9.05 /PH 8.1/8.2 /H2O 1 GPM

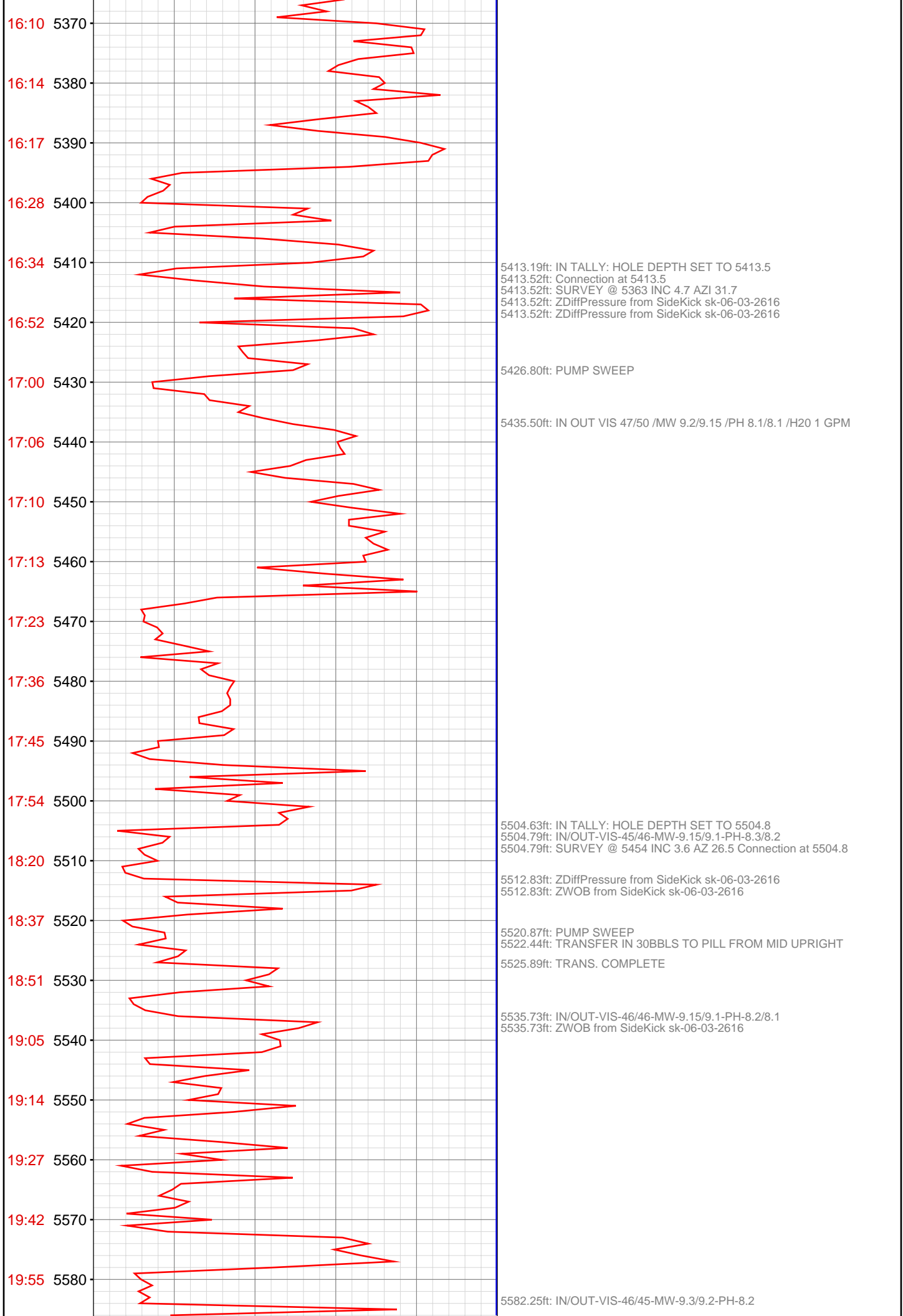
5230.54ft: Connection at 5230.5 SURVEY @ 5180 INC 6.9 AZI 36.2
5230.54ft: ZDiffPressure from SideKick sk-06-03-2616
5230.71ft: IN TALLY: HOLE DEPTH SET TO 5230.5
5236.16ft: PUMP SWEEP

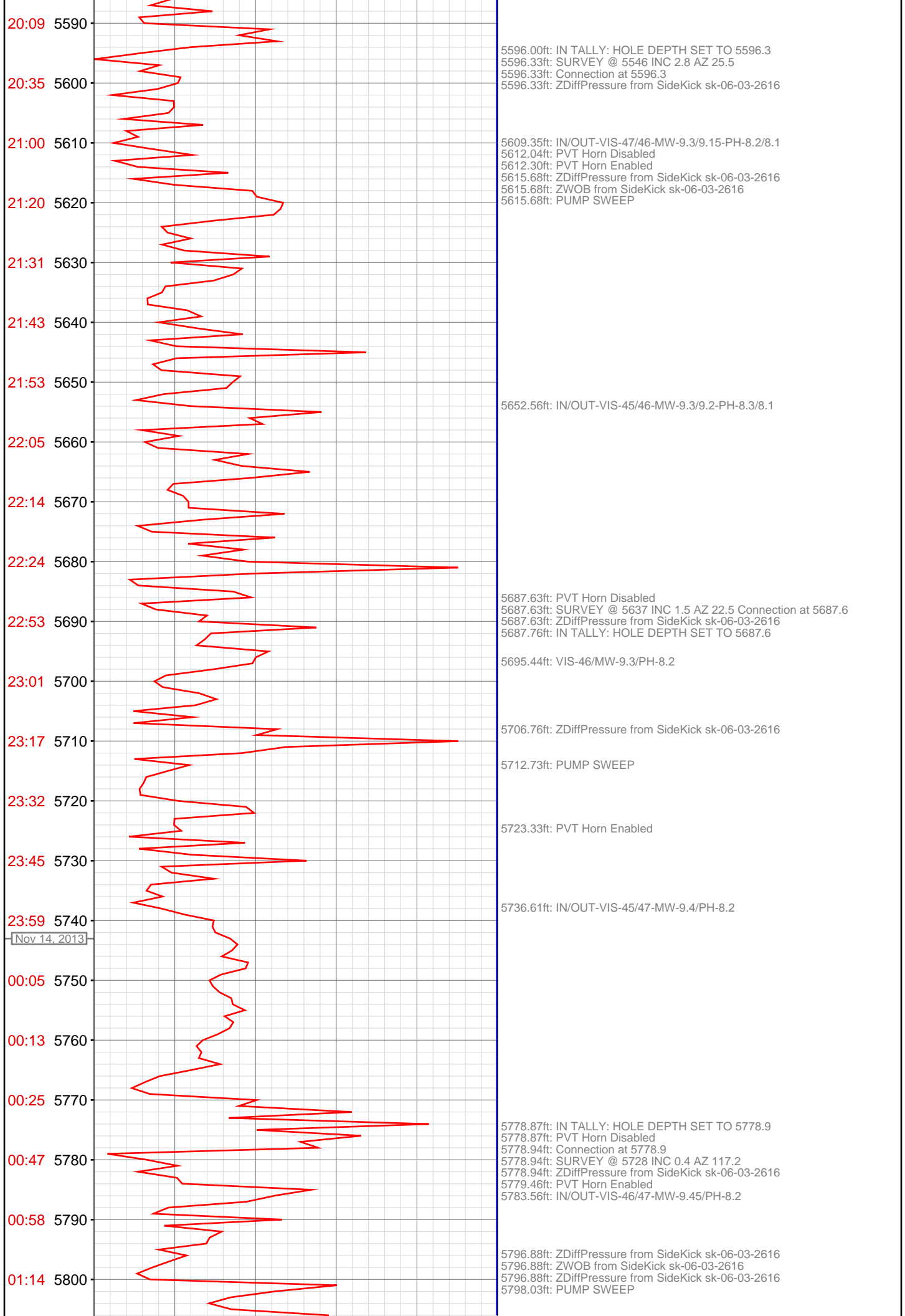
5254.82ft: IN OUT VIS 50/50 / MW 9.15/9.15 / PH 8.1/8.1 / H2O 1 GPM

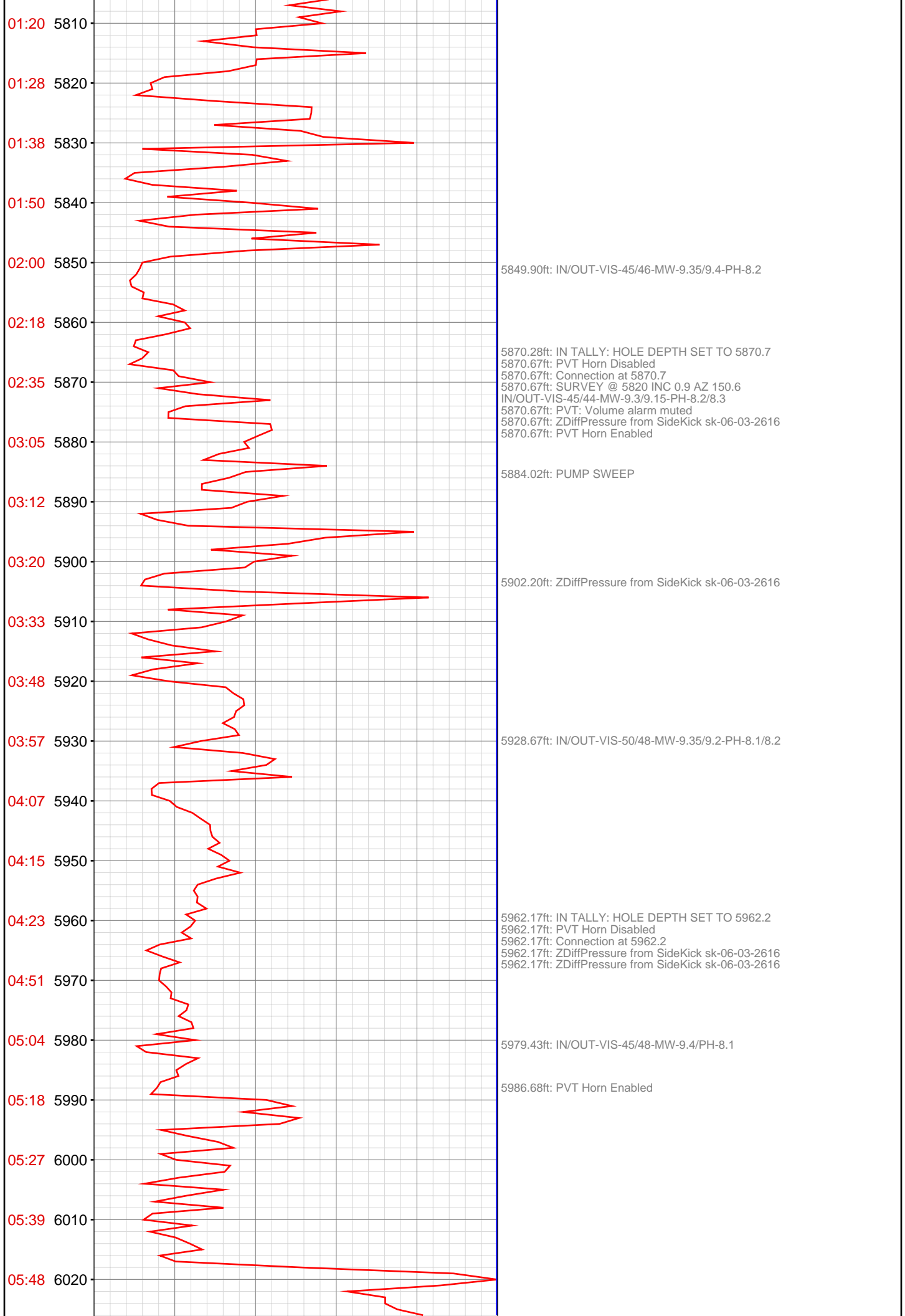
5303.54ft: PUMP SWEEP

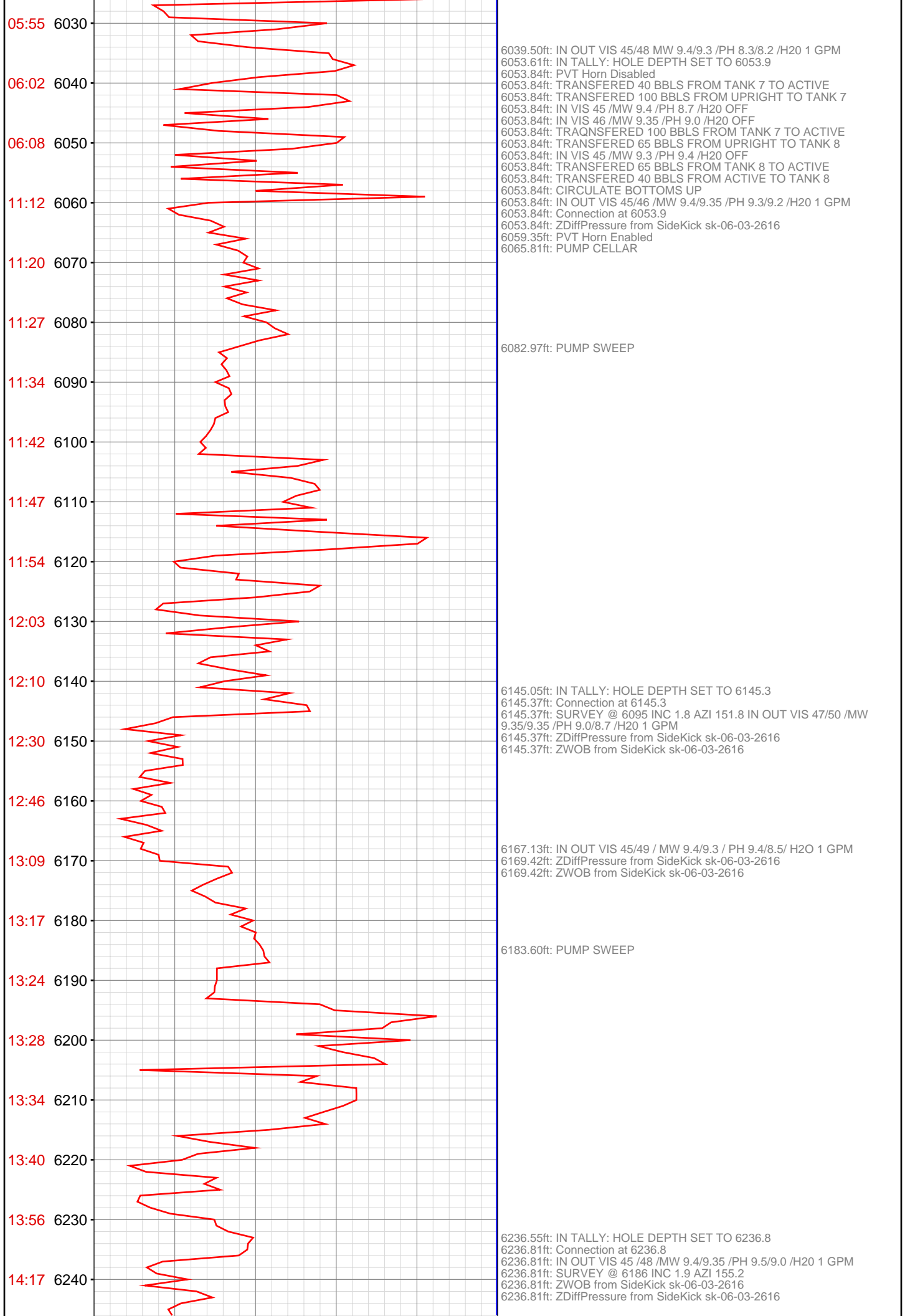
5322.01ft: IN TALLY: HOLE DEPTH SET TO 5322.1
5322.08ft: IN OUT VIS 47/50 /MW 9.15/9.05 /PH 8.1/8.1 /H2O 1 GPM
Connection at 5322.1
5322.08ft: SURVEY @ 5272 INC 5.6 AZI 33.6
5322.08ft: ZDiffPressure from SideKick sk-06-03-2616
5322.87ft: PUMP SWEEP

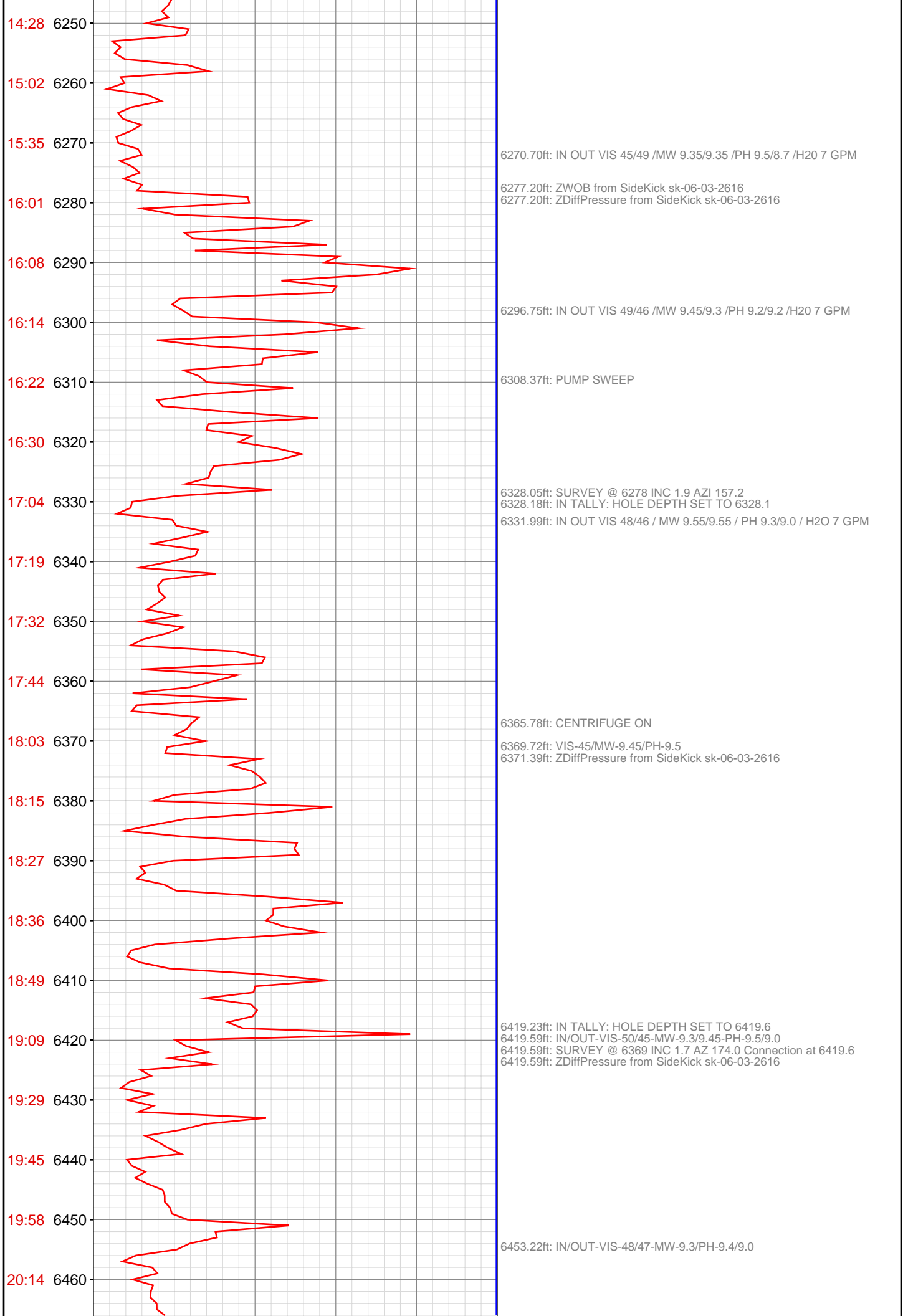
5356.33ft: IN OUT VIS 50/50 /MW 9.1/9.1 /PH 8.1/8.2 /H2O 1 GPM











20:30 6470

6471.52ft: ZWOB from SideKick sk-06-03-2616
6471.52ft: ZDiffPressure from SideKick sk-06-03-2616
6473.79ft: PUMP SWEEP

20:46 6480

20:54 6490

6490.42ft: IN/OUT-VIS-49/46-MW-9.35/9.3-PH-9.5/9.3

20:59 6500

21:07 6510

6511.06ft: IN TALLY: HOLE DEPTH SET TO 6511.2
6511.22ft: PVT Horn Disabled
6511.22ft: Connection at 6511.2 SURVEY @ 6461 INC 1.5 AZ 178.2
6511.22ft: ZDiffPressure from SideKick sk-06-03-2616
6513.55ft: PVT Horn Enabled

21:37 6520

22:06 6530

6526.90ft: IN/OUT-VIS-50/45-MW-9.35/9.25-PH-9.5/9.1

22:27 6540

22:46 6550

6553.94ft: IN/OUT-VIS-46/44-MW-9.3/9.25-PH-9.4/9.0
6556.33ft: ZWOB from SideKick sk-06-03-2616
6556.33ft: PUMP SWEEP

23:05 6560

23:14 6570

23:25 6580

23:30 6590

23:35 6600

6602.56ft: IN TALLY: HOLE DEPTH SET TO 6602.8
6602.76ft: PVT Horn Disabled
6602.76ft: Connection at 6602.8 SURVEY @ 6552 INC 1.1 AZ 22.9
6602.76ft: VIS-47/MW-9.35/PH-9.5

Nov 15, 2013

00:08 6610

00:30 6620

6619.29ft: PVT Horn Enabled
6619.59ft: ZDiffPressure from SideKick sk-06-03-2616
6619.65ft: PUMP SWEEP

00:43 6630

00:52 6640

00:58 6650

6647.31ft: VIS-45/MW-9.3/PH-9.4

01:05 6660

01:12 6670

01:24 6680

