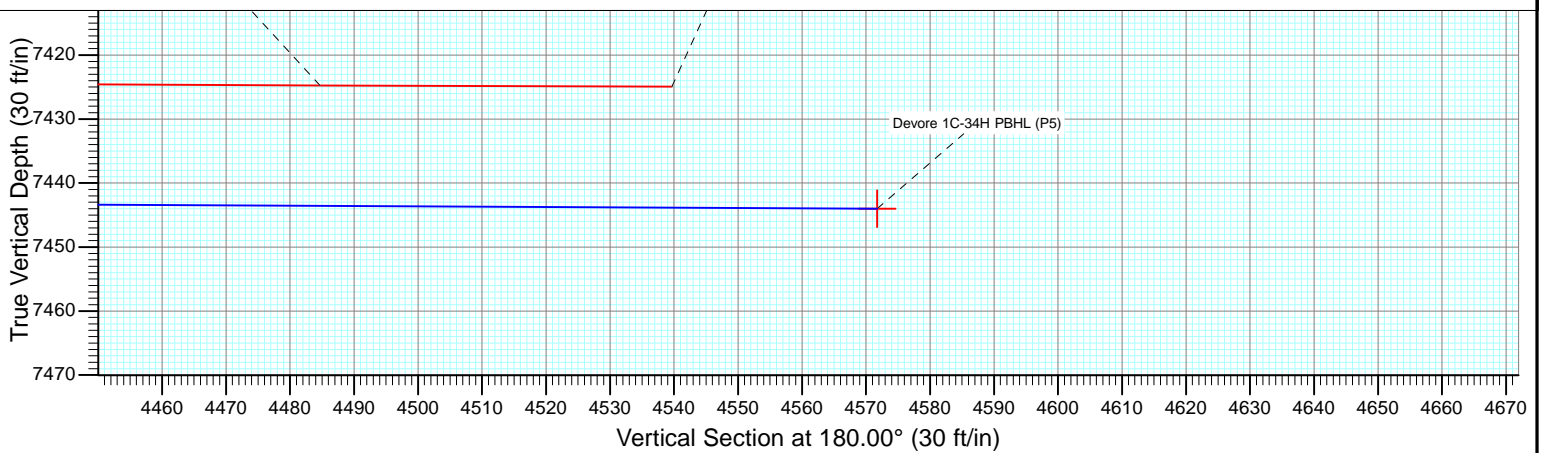
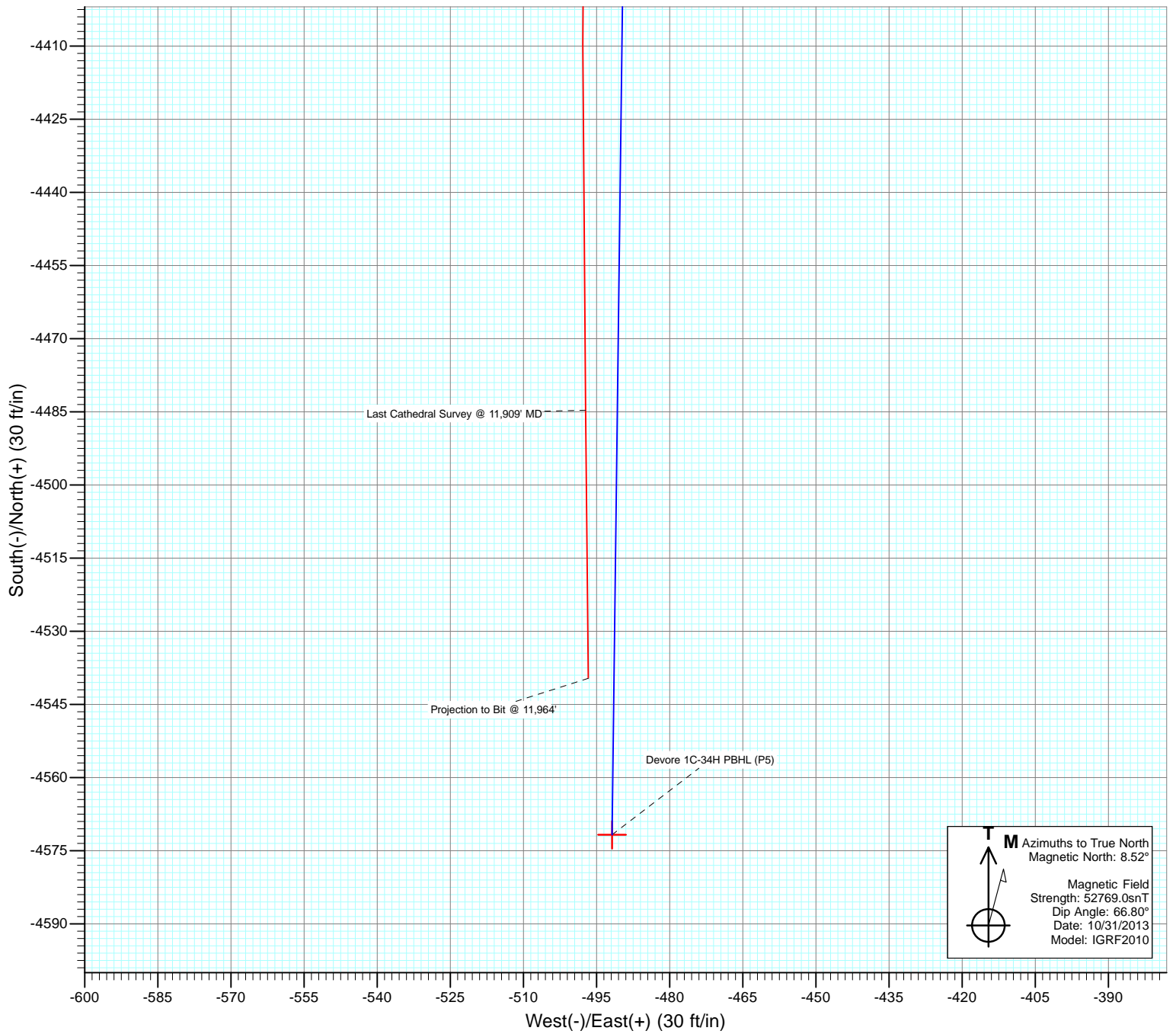




Project: DJ Wattenberg  
Site: S34-T3N-R66W (Devore)  
Well: Devore 1C-34H  
Wellbore: Hz  
Design: FINAL



# Cathedral Energy Services

## Survey Report

<b>Company:</b>	EnCana Oil & Gas (USA) Inc	<b>Local Co-ordinate Reference:</b>	Well Devore 1C-34H
<b>Project:</b>	DJ Wattenberg	<b>TVD Reference:</b>	KB @ 4990.0ft (Patterson 272)
<b>Site:</b>	S34-T3N-R66W (Devore)	<b>MD Reference:</b>	KB @ 4990.0ft (Patterson 272)
<b>Well:</b>	Devore 1C-34H	<b>North Reference:</b>	True
<b>Wellbore:</b>	Hz	<b>Survey Calculation Method:</b>	Minimum Curvature
<b>Design:</b>	FINAL	<b>Database:</b>	USA EDM 5000 Multi Users DB

<b>Project</b>	DJ Wattenberg		
<b>Map System:</b>	US State Plane 1983	<b>System Datum:</b>	Mean Sea Level
<b>Geo Datum:</b>	North American Datum 1983		
<b>Map Zone:</b>	Colorado Northern Zone		

Site		S34-T3N-R66W (Devore)			
Site Position:		Northing:	1,307,711.17 ft	Latitude:	40.175660
From:	Lat/Long	Easting:	3,207,971.22 ft	Longitude:	-104.755750
Position Uncertainty:	0.0 ft	Slot Radius:	13.200 in	Grid Convergence:	0.48 °

Well	Devore 1C-34H					
Well Position	+N/-S	0.0 ft	Northing:	1,312,279.64 ft	Latitude:	40.188220
	+E/-W	0.0 ft	Easting:	3,207,128.23 ft	Longitude:	-104.758630
Position Uncertainty		0.0 ft	Wellhead Elevation:	ft	Ground Level:	4,961.0 ft

<b>Wellbore</b>	Hz				
<b>Magnetics</b>	<b>Model Name</b>	<b>Sample Date</b>	<b>Declination (°)</b>	<b>Dip Angle (°)</b>	<b>Field Strength (nT)</b>
	IGRF2010	10/31/2013	8.52	66.80	52,769

<b>Design</b>	FINAL				
<b>Audit Notes:</b>					
<b>Version:</b>	1.0	<b>Phase:</b>	ACTUAL	<b>Tie On Depth:</b>	0.0
<b>Vertical Section:</b>	<b>Depth From (TVD)</b>	<b>+N/-S</b>	<b>+E/-W</b>	<b>Direction</b>	
	(ft)	(ft)	(ft)	(°)	
	0.0	0.0	0.0	180.00	

<b>Survey Program</b>	<b>Date</b>	11/6/2013			
<b>From (ft)</b>	<b>To (ft)</b>	<b>Survey (Wellbore)</b>	<b>Tool Name</b>	<b>Description</b>	
260.0	11,964.0	Survey #1 (Hz)	Geolink MWD	Geolink MWD	

<b>Survey</b>										
<b>Measured Depth (ft)</b>	<b>Inclination (°)</b>	<b>Azimuth (°)</b>	<b>Vertical Depth (ft)</b>	<b>+N/-S (ft)</b>	<b>+E/-W (ft)</b>	<b>Vertical Section (ft)</b>	<b>Dogleg Rate (°/100ft)</b>	<b>Build Rate (°/100ft)</b>	<b>Formations / Comments</b>	
0.0	0.00	0.00	0.0	0.0	0.0	0.0	0.00	0.00		
260.0	0.10	43.70	260.0	0.2	0.2	-0.2	0.04	0.04		
354.0	0.30	76.00	354.0	0.3	0.5	-0.3	0.24	0.21		
447.0	1.20	289.80	447.0	0.7	-0.2	-0.7	1.57	0.97		
541.0	2.10	281.30	541.0	1.3	-2.8	-1.3	0.99	0.96		
635.0	3.60	289.00	634.8	2.6	-7.3	-2.6	1.64	1.60		
728.0	4.20	284.70	727.6	4.5	-13.4	-4.5	0.72	0.65		
822.0	4.50	280.90	821.3	6.0	-20.3	-6.0	0.44	0.32		
916.0	5.20	285.80	915.0	7.9	-28.0	-7.9	0.86	0.74		
985.0	5.80	286.20	983.7	9.7	-34.4	-9.7	0.87	0.87		
1,108.0	7.10	298.60	1,105.9	15.1	-47.0	-15.1	1.54	1.06		
1,201.0	7.80	296.20	1,198.1	20.6	-57.8	-20.6	0.82	0.75		
1,295.0	9.50	296.30	1,291.1	26.9	-70.4	-26.9	1.81	1.81		

# Cathedral Energy Services

## Survey Report

<b>Company:</b>	EnCana Oil & Gas (USA) Inc	<b>Local Co-ordinate Reference:</b>	Well Devore 1C-34H
<b>Project:</b>	DJ Wattenberg	<b>TVD Reference:</b>	KB @ 4990.0ft (Patterson 272)
<b>Site:</b>	S34-T3N-R66W (Devore)	<b>MD Reference:</b>	KB @ 4990.0ft (Patterson 272)
<b>Well:</b>	Devore 1C-34H	<b>North Reference:</b>	True
<b>Wellbore:</b>	Hz	<b>Survey Calculation Method:</b>	Minimum Curvature
<b>Design:</b>	FINAL	<b>Database:</b>	USA EDM 5000 Multi Users DB

### Survey

Measured Depth (ft)	Inclination (°)	Azimuth (°)	Vertical Depth (ft)	+N/-S (ft)	+E/-W (ft)	Vertical Section (ft)	Dogleg Rate (°/100ft)	Build Rate (°/100ft)	Formations / Comments
1,388.0	9.50	298.80	1,382.8	34.0	-84.0	-34.0	0.44	0.00	
1,482.0	10.80	293.10	1,475.3	41.2	-98.9	-41.2	1.75	1.38	
1,576.0	9.60	298.20	1,567.8	48.3	-113.9	-48.3	1.60	-1.28	
1,669.0	11.30	296.50	1,659.3	56.1	-128.9	-56.1	1.86	1.83	
1,763.0	12.60	289.10	1,751.3	63.5	-146.9	-63.5	2.14	1.38	
1,856.0	13.50	282.10	1,841.9	69.1	-167.1	-69.1	1.95	0.97	
1,950.0	12.90	279.00	1,933.4	73.1	-188.2	-73.1	0.99	-0.64	
2,044.0	13.10	281.30	2,025.0	76.8	-209.0	-76.8	0.59	0.21	
2,139.0	13.20	285.10	2,117.5	81.7	-230.0	-81.7	0.92	0.11	
2,233.0	14.20	289.60	2,208.8	88.4	-251.2	-88.4	1.55	1.06	
2,328.0	13.90	293.30	2,301.0	96.8	-272.7	-96.8	1.00	-0.32	
2,422.0	13.50	291.90	2,392.3	105.4	-293.2	-105.4	0.55	-0.43	
2,516.0	12.90	289.90	2,483.8	113.0	-313.3	-113.0	0.80	-0.64	
2,611.0	12.10	295.70	2,576.6	121.0	-332.2	-121.0	1.57	-0.84	
2,705.0	11.60	294.00	2,668.5	129.1	-349.7	-129.1	0.65	-0.53	
2,800.0	11.00	293.70	2,761.7	136.6	-366.8	-136.6	0.63	-0.63	
2,894.0	12.30	294.00	2,853.8	144.3	-384.1	-144.3	1.38	1.38	
2,989.0	11.90	292.90	2,946.7	152.2	-402.4	-152.2	0.49	-0.42	
3,083.0	11.40	291.70	3,038.7	159.4	-419.9	-159.4	0.59	-0.53	
3,178.0	11.00	291.10	3,131.9	166.1	-437.1	-166.1	0.44	-0.42	
3,272.0	10.20	289.30	3,224.3	172.1	-453.4	-172.1	0.92	-0.85	
3,367.0	9.70	287.80	3,317.9	177.4	-468.9	-177.4	0.59	-0.53	
3,461.0	7.90	292.60	3,410.8	182.3	-482.4	-182.3	2.07	-1.91	
3,556.0	7.40	292.00	3,504.9	187.1	-494.1	-187.1	0.53	-0.53	
3,650.0	7.10	300.40	3,598.2	192.3	-504.7	-192.3	1.17	-0.32	
3,745.0	5.50	302.90	3,692.6	197.7	-513.6	-197.7	1.71	-1.68	
3,839.0	3.60	301.90	3,786.3	201.7	-519.9	-201.7	2.02	-2.02	
3,934.0	2.20	271.80	3,881.2	203.3	-524.3	-203.3	2.13	-1.47	
4,028.0	0.80	258.00	3,975.1	203.3	-526.7	-203.3	1.53	-1.49	
4,123.0	1.00	253.60	4,070.1	202.9	-528.2	-202.9	0.22	0.21	
4,217.0	1.10	256.20	4,164.1	202.4	-529.8	-202.4	0.12	0.11	
4,311.0	1.60	128.40	4,258.1	201.4	-529.7	-201.4	2.59	0.53	
4,406.0	1.50	128.80	4,353.1	199.8	-527.7	-199.8	0.11	-0.11	
4,501.0	1.40	123.40	4,448.0	198.4	-525.7	-198.4	0.18	-0.11	
4,595.0	1.20	125.60	4,542.0	197.2	-524.0	-197.2	0.22	-0.21	
4,690.0	1.00	131.10	4,637.0	196.1	-522.5	-196.1	0.24	-0.21	
4,784.0	0.90	129.80	4,731.0	195.1	-521.3	-195.1	0.11	-0.11	
4,879.0	0.70	143.40	4,826.0	194.1	-520.4	-194.1	0.29	-0.21	
4,973.0	0.90	143.60	4,920.0	193.1	-519.6	-193.1	0.21	0.21	
5,067.0	0.70	355.70	5,014.0	193.0	-519.2	-193.0	1.64	-0.21	
5,162.0	0.70	351.60	5,109.0	194.2	-519.4	-194.2	0.05	0.00	
5,256.0	0.70	351.90	5,202.9	195.3	-519.5	-195.3	0.00	0.00	
5,350.0	0.60	356.70	5,296.9	196.4	-519.7	-196.4	0.12	-0.11	
5,445.0	0.70	0.00	5,391.9	197.5	-519.7	-197.5	0.11	0.11	
5,539.0	0.60	344.70	5,485.9	198.5	-519.8	-198.5	0.21	-0.11	
5,634.0	0.50	314.40	5,580.9	199.3	-520.2	-199.3	0.32	-0.11	
5,728.0	0.70	311.80	5,674.9	200.0	-521.0	-200.0	0.21	0.21	
5,823.0	0.60	319.00	5,769.9	200.7	-521.7	-200.7	0.14	-0.11	
5,917.0	0.60	321.40	5,863.9	201.5	-522.3	-201.5	0.03	0.00	
6,011.0	0.40	329.10	5,957.9	202.1	-522.8	-202.1	0.22	-0.21	
6,106.0	0.50	339.60	6,052.9	202.8	-523.1	-202.8	0.14	0.11	
6,200.0	0.30	32.20	6,146.9	203.4	-523.1	-203.4	0.42	-0.21	
6,295.0	0.50	25.50	6,241.9	204.0	-522.8	-204.0	0.22	0.21	

# Cathedral Energy Services

## Survey Report

<b>Company:</b>	EnCana Oil & Gas (USA) Inc	<b>Local Co-ordinate Reference:</b>	Well Devore 1C-34H
<b>Project:</b>	DJ Wattenberg	<b>TVD Reference:</b>	KB @ 4990.0ft (Patterson 272)
<b>Site:</b>	S34-T3N-R66W (Devore)	<b>MD Reference:</b>	KB @ 4990.0ft (Patterson 272)
<b>Well:</b>	Devore 1C-34H	<b>North Reference:</b>	True
<b>Wellbore:</b>	Hz	<b>Survey Calculation Method:</b>	Minimum Curvature
<b>Design:</b>	FINAL	<b>Database:</b>	USA EDM 5000 Multi Users DB

Survey									
Measured Depth (ft)	Inclination (°)	Azimuth (°)	Vertical Depth (ft)	+N/-S (ft)	+E/-W (ft)	Vertical Section (ft)	Dogleg Rate (°/100ft)	Build Rate (°/100ft)	Formations / Comments
6,390.0	0.60	50.50	6,336.9	204.7	-522.3	-204.7	0.27	0.11	
6,484.0	0.30	82.80	6,430.9	205.0	-521.7	-205.0	0.41	-0.32	
6,579.0	0.60	83.50	6,525.9	205.1	-520.9	-205.1	0.32	0.32	
6,673.0	0.70	62.80	6,619.9	205.4	-519.9	-205.4	0.27	0.11	
6,767.0	0.70	52.30	6,713.9	206.0	-518.9	-206.0	0.14	0.00	
6,862.0	0.50	39.80	6,808.9	206.7	-518.2	-206.7	0.25	-0.21	
6,893.0	2.20	169.60	6,839.9	206.2	-518.0	-206.2	8.22	5.48	
6,925.0	6.30	174.60	6,871.8	203.9	-517.8	-203.9	12.85	12.81	
6,956.0	10.00	175.70	6,902.4	199.5	-517.4	-199.5	11.95	11.94	
6,987.0	13.20	177.30	6,932.8	193.3	-517.0	-193.3	10.37	10.32	
7,019.0	14.60	180.90	6,963.9	185.6	-516.9	-185.6	5.14	4.37	
7,050.0	17.90	182.30	6,993.6	176.9	-517.2	-176.9	10.72	10.65	
7,082.0	19.60	186.90	7,023.9	166.7	-518.0	-166.7	7.04	5.31	
7,113.0	22.20	183.70	7,052.9	155.7	-519.0	-155.7	9.16	8.39	
7,145.0	25.50	181.50	7,082.2	142.8	-519.6	-142.8	10.68	10.31	
7,176.0	30.10	182.50	7,109.6	128.3	-520.1	-128.3	14.91	14.84	
7,208.0	33.10	184.10	7,136.8	111.6	-521.1	-111.6	9.73	9.37	
7,239.0	35.60	184.00	7,162.4	94.1	-522.3	-94.1	8.07	8.06	
7,271.0	37.90	183.90	7,188.1	75.0	-523.6	-75.0	7.19	7.19	
7,302.0	41.30	181.70	7,211.9	55.3	-524.6	-55.3	11.86	10.97	
7,333.0	43.90	180.90	7,234.8	34.3	-525.0	-34.3	8.57	8.39	
7,365.0	46.70	179.50	7,257.3	11.6	-525.1	-11.6	9.29	8.75	
7,396.0	49.30	178.50	7,278.0	-11.5	-524.7	11.5	8.72	8.39	
7,428.0	52.00	178.50	7,298.3	-36.2	-524.1	36.2	8.44	8.44	
7,459.0	55.70	178.50	7,316.6	-61.2	-523.4	61.2	11.94	11.94	
7,491.0	58.00	179.20	7,334.1	-88.0	-522.9	88.0	7.42	7.19	
7,522.0	58.40	178.30	7,350.4	-114.3	-522.3	114.3	2.78	1.29	
7,554.0	60.50	177.50	7,366.7	-141.9	-521.3	141.9	6.91	6.56	
7,585.0	65.20	176.70	7,380.8	-169.4	-519.9	169.4	15.33	15.16	
7,617.0	69.60	176.10	7,393.1	-198.9	-518.0	198.9	13.86	13.75	
7,648.0	73.90	176.10	7,402.8	-228.3	-516.0	228.3	13.87	13.87	
7,680.0	77.30	177.10	7,410.8	-259.2	-514.2	259.2	11.05	10.62	
7,711.0	81.50	177.40	7,416.5	-289.6	-512.7	289.6	13.58	13.55	
7,773.0	89.30	178.20	7,421.4	-351.3	-510.4	351.3	12.65	12.58	
7,867.0	89.90	178.20	7,422.1	-445.3	-507.4	445.3	0.64	0.64	
7,962.0	88.80	179.20	7,423.2	-540.2	-505.3	540.2	1.56	-1.16	
8,056.0	90.00	179.00	7,424.2	-634.2	-503.8	634.2	1.29	1.28	
8,151.0	89.60	180.50	7,424.5	-729.2	-503.4	729.2	1.63	-0.42	
8,245.0	89.90	182.90	7,424.9	-823.2	-506.2	823.2	2.57	0.32	
8,340.0	91.90	181.10	7,423.4	-918.1	-509.5	918.1	2.83	2.11	
8,434.0	89.80	181.80	7,422.0	-1,012.0	-511.8	1,012.0	2.35	-2.23	
8,529.0	89.60	181.50	7,422.5	-1,107.0	-514.6	1,107.0	0.38	-0.21	
8,623.0	89.90	181.60	7,422.9	-1,201.0	-517.1	1,201.0	0.34	0.32	
8,717.0	90.20	181.40	7,422.8	-1,294.9	-519.6	1,294.9	0.38	0.32	
8,812.0	90.10	181.70	7,422.6	-1,389.9	-522.2	1,389.9	0.33	-0.11	
8,906.0	90.10	181.00	7,422.4	-1,483.9	-524.4	1,483.9	0.74	0.00	
9,001.0	88.20	177.90	7,423.8	-1,578.8	-523.5	1,578.8	3.83	-2.00	
9,096.0	88.00	177.20	7,427.0	-1,673.7	-519.4	1,673.7	0.77	-0.21	
9,190.0	87.90	175.20	7,430.4	-1,767.4	-513.2	1,767.4	2.13	-0.11	
9,284.0	89.60	176.70	7,432.4	-1,861.2	-506.5	1,861.2	2.41	1.81	
9,379.0	89.80	177.40	7,432.9	-1,956.0	-501.7	1,956.0	0.77	0.21	
9,473.0	90.50	178.10	7,432.7	-2,050.0	-498.0	2,050.0	1.05	0.74	
9,567.0	90.80	178.20	7,431.6	-2,143.9	-494.9	2,143.9	0.34	0.32	

# Cathedral Energy Services

## Survey Report

<b>Company:</b>	EnCana Oil & Gas (USA) Inc	<b>Local Co-ordinate Reference:</b>	Well Devore 1C-34H
<b>Project:</b>	DJ Wattenberg	<b>TVD Reference:</b>	KB @ 4990.0ft (Patterson 272)
<b>Site:</b>	S34-T3N-R66W (Devore)	<b>MD Reference:</b>	KB @ 4990.0ft (Patterson 272)
<b>Well:</b>	Devore 1C-34H	<b>North Reference:</b>	True
<b>Wellbore:</b>	Hz	<b>Survey Calculation Method:</b>	Minimum Curvature
<b>Design:</b>	FINAL	<b>Database:</b>	USA EDM 5000 Multi Users DB

### Survey

Measured Depth (ft)	Inclination (°)	Azimuth (°)	Vertical Depth (ft)	+N/-S (ft)	+E/-W (ft)	Vertical Section (ft)	Dogleg Rate (°/100ft)	Build Rate (°/100ft)	Formations / Comments
9,662.0	91.30	178.20	7,429.8	-2,238.9	-491.9	2,238.9	0.53	0.53	
9,756.0	91.50	178.20	7,427.6	-2,332.8	-489.0	2,332.8	0.21	0.21	
9,851.0	91.80	178.70	7,424.8	-2,427.7	-486.4	2,427.7	0.61	0.32	
9,945.0	91.00	178.10	7,422.5	-2,521.6	-483.8	2,521.6	1.06	-0.85	
10,039.0	89.30	176.70	7,422.3	-2,615.5	-479.5	2,615.5	2.34	-1.81	
10,134.0	90.40	177.30	7,422.5	-2,710.4	-474.6	2,710.4	1.32	1.16	
10,228.0	89.90	178.10	7,422.3	-2,804.3	-470.8	2,804.3	1.00	-0.53	
10,323.0	89.30	179.30	7,422.9	-2,899.3	-468.6	2,899.3	1.41	-0.63	
10,417.0	89.00	178.90	7,424.3	-2,993.3	-467.2	2,993.3	0.53	-0.32	
10,511.0	88.90	180.20	7,426.1	-3,087.3	-466.4	3,087.3	1.39	-0.11	
10,606.0	90.20	181.50	7,426.8	-3,182.2	-467.8	3,182.2	1.94	1.37	
10,701.0	90.60	181.10	7,426.1	-3,277.2	-470.0	3,277.2	0.60	0.42	
10,795.0	91.20	180.60	7,424.7	-3,371.2	-471.4	3,371.2	0.83	0.64	
10,890.0	90.50	181.80	7,423.3	-3,466.2	-473.4	3,466.2	1.46	-0.74	
10,984.0	90.50	181.50	7,422.4	-3,560.1	-476.1	3,560.1	0.32	0.00	
11,079.0	90.60	180.30	7,421.5	-3,655.1	-477.6	3,655.1	1.27	0.11	
11,173.0	90.70	181.50	7,420.5	-3,749.1	-479.0	3,749.1	1.28	0.11	
11,268.0	90.30	181.00	7,419.6	-3,844.0	-481.1	3,844.0	0.67	-0.42	
11,362.0	90.10	182.00	7,419.3	-3,938.0	-483.6	3,938.0	1.08	-0.21	
11,456.0	89.50	183.70	7,419.6	-4,031.9	-488.2	4,031.9	1.92	-0.64	
11,551.0	89.00	182.20	7,420.9	-4,126.8	-493.1	4,126.8	1.66	-0.53	
11,645.0	89.10	181.00	7,422.4	-4,220.7	-495.8	4,220.7	1.28	0.11	
11,739.0	89.40	180.90	7,423.7	-4,314.7	-497.3	4,314.7	0.34	0.32	
11,834.0	89.70	179.70	7,424.4	-4,409.7	-497.8	4,409.7	1.30	0.32	
11,909.0	89.80	179.40	7,424.7	-4,484.7	-497.2	4,484.7	0.42	0.13	<b>Last Cathedral Survey @ 11,909' MD</b>
11,964.0	89.80	179.40	7,424.9	-4,539.7	-496.7	4,539.7	0.00	0.00	<b>Projection to Bit @ 11,964'</b>

# Cathedral Energy Services

## Survey Report

<b>Company:</b>	EnCana Oil & Gas (USA) Inc	<b>Local Co-ordinate Reference:</b>	Well Devore 1C-34H
<b>Project:</b>	DJ Wattenberg	<b>TVD Reference:</b>	KB @ 4990.0ft (Patterson 272)
<b>Site:</b>	S34-T3N-R66W (Devore)	<b>MD Reference:</b>	KB @ 4990.0ft (Patterson 272)
<b>Well:</b>	Devore 1C-34H	<b>North Reference:</b>	True
<b>Wellbore:</b>	Hz	<b>Survey Calculation Method:</b>	Minimum Curvature
<b>Design:</b>	FINAL	<b>Database:</b>	USA EDM 5000 Multi Users DB

Targets									
Target Name	Dip Angle	Dip Dir.	TVD	+N/-S	+E/-W	Northing	Easting	Latitude	Longitude
- hit/miss target	(°)	(°)	(ft)	(ft)	(ft)	(ft)	(ft)		
- Shape									
Devore 1C-34H PBHL (F	0.00	0.00	7,450.0	-4,571.7	-491.8	1,307,703.97	3,206,674.67	40.175670	-104.760390
- actual wellpath misses target center by 41.0ft at 11964.0ft MD (7424.9 TVD, -4539.7 N, -496.7 E)									
- Point									
Devore 1C-34H TGT 2 (I	0.00	0.00	7,442.0	-3,000.0	-474.8	1,309,275.78	3,206,678.53	40.179985	-104.760329
- actual wellpath misses target center by 19.2ft at 10424.0ft MD (7424.5 TVD, -3000.3 N, -467.0 E)									
- Point									
Devore 1C-34H TGT 1 (I	0.00	0.00	7,428.0	-1,500.0	-519.9	1,310,775.35	3,206,620.89	40.184102	-104.760491
- actual wellpath misses target center by 7.3ft at 8922.2ft MD (7422.4 TVD, -1500.1 N, -524.6 E)									
- Point									
Devore 1C-34H TGT 1 (I	0.00	0.00	7,434.0	-1,500.0	-519.9	1,310,775.35	3,206,620.89	40.184102	-104.760491
- actual wellpath misses target center by 12.5ft at 8922.3ft MD (7422.4 TVD, -1500.2 N, -524.6 E)									
- Point									
Devore 1C-34H TGT 2 (I	0.00	0.00	7,436.0	-3,000.0	-474.8	1,309,275.78	3,206,678.53	40.179985	-104.760329
- actual wellpath misses target center by 13.9ft at 10423.9ft MD (7424.5 TVD, -3000.1 N, -467.0 E)									
- Point									
Devore 1C-34H PBHL (F	0.00	0.00	7,444.0	-4,571.7	-491.8	1,307,703.97	3,206,674.67	40.175670	-104.760390
- actual wellpath misses target center by 37.6ft at 11964.0ft MD (7424.9 TVD, -4539.7 N, -496.7 E)									
- Point									
Devore 1C-34H PBHL	0.00	0.00	7,404.0	-4,571.7	-491.8	1,307,703.97	3,206,674.67	40.175670	-104.760390
- actual wellpath misses target center by 38.6ft at 11964.0ft MD (7424.9 TVD, -4539.7 N, -496.7 E)									
- Point									

Design Annotations				
Measured Depth	Vertical Depth	Local Coordinates		Comment
(ft)	(ft)	+N/-S (ft)	+E/-W (ft)	
11,909.0	7,424.7	-4,484.7	-497.2	Last Cathedral Survey @ 11,909' MD
11,964.0	7,424.9	-4,539.7	-496.7	Projection to Bit @ 11,964'

Checked By: \_\_\_\_\_ Approved By: \_\_\_\_\_ Date: \_\_\_\_\_