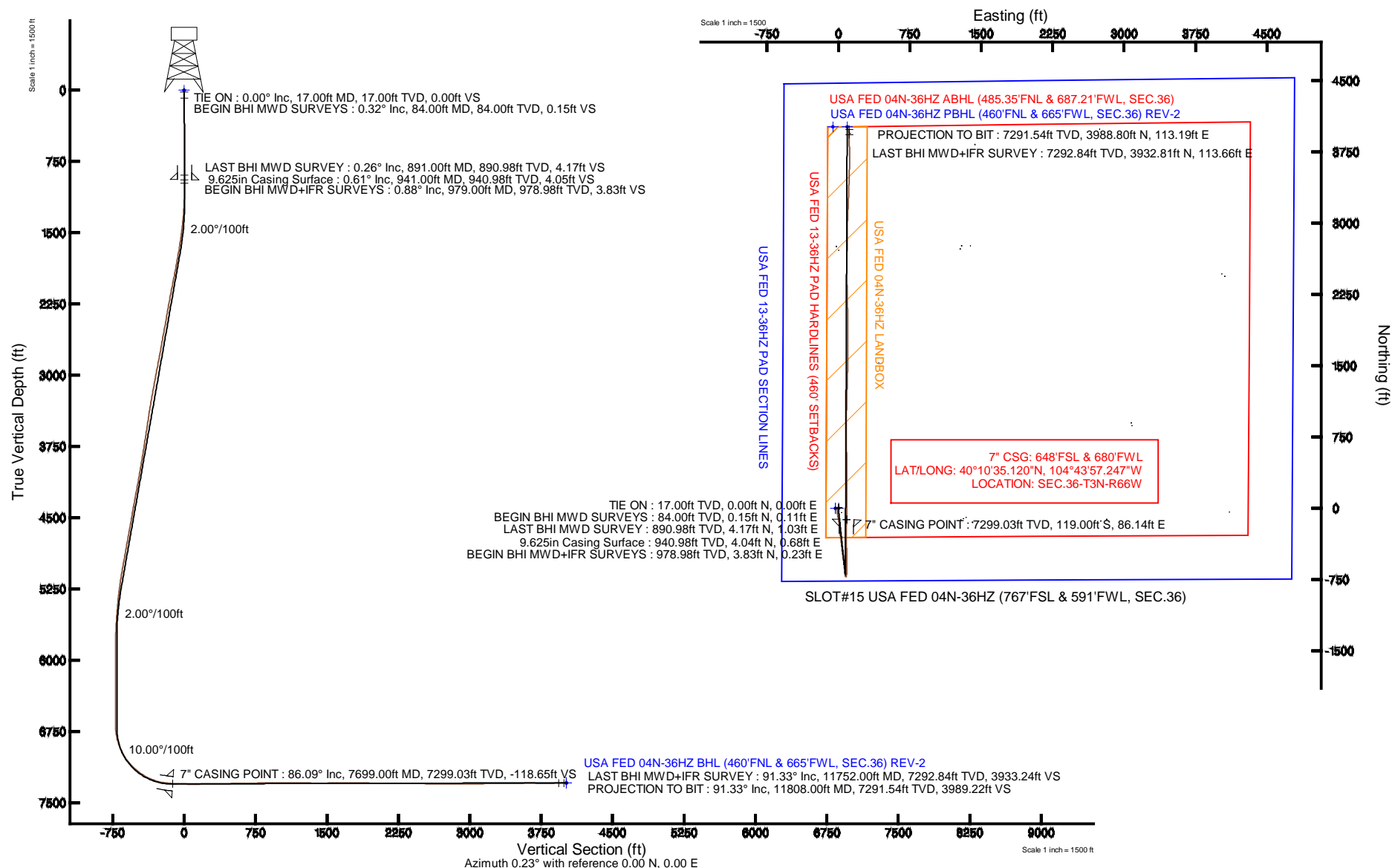


# KERR-MCGEE OIL & GAS ONSHORE LP

Location: COLORADO Slot: SLOT#15 USA FED 04N-36HZ (767'FSL & 591'FWL, SEC.36)  
 Field: WELD COUNTY (KERR MCGEE) Well: USA FED 04N-36HZ  
 Facility: SEC.36-T3N-R66W Wellbore: USA FED 04N-36HZ PWB

Plot reference wellpath is USA FED 04N-36HZ (REV-B.0) PWP

True vertical depths are referenced to XTREME 8 (RKB)	Grid System: NAD83 / Lambert Colorado SP, Northern Zone (501), US feet
Measured depths are referenced to XTREME 8 (RKB)	North Reference: True north
XTREME 8 (RKB) to Mean Sea Level: 5041 feet	Scale: True distance
Mean Sea Level to Mud line (At Slot: SLOT#15 USA FED 04N-36HZ (767'FSL & 591'FWL, SEC.36)): 0 feet	Depths are in feet
Coordinates are in feet referenced to Slot	Created by: robale01 on 19/Nov/2013





# Actual Wellpath Report

USA FED 04N-36HZ AWP

Page 1 of 7



## REFERENCE WELLPATH IDENTIFICATION

Operator	KERR-MCGEE OIL & GAS ONSHORE LP	Slot	SLOT#15 USA FED 04N-36HZ (767'FSL & 591'FWL, SEC.36)
Area	COLORADO	Well	USA FED 04N-36HZ
Field	WELD COUNTY (KERR MCGEE)	Wellbore	USA FED 04N-36HZ AWP
Facility	SEC.36-T3N-R66W		

## REPORT SETUP INFORMATION

Projection System	NAD83 / Lambert Colorado SP, Northern Zone (501), US feet	Software System	WellArchitect® 4.0.0
North Reference	True	User	Robiale01
Scale	0.999958	Report Generated	19/Nov/2013 at 14:31
Convergence at slot	n/a	Database/Source file	WellArchitectDB/USA_FED_04N-36HZ_AWP.xml

## WELLPATH LOCATION

	Local coordinates		Grid coordinates		Geographic coordinates	
	North[ft]	East[ft]	Easting[US ft]	Northing[US ft]	Latitude	Longitude
Slot Location	-2754.50	23.21	3214352.61	1308159.67	40°10'36.296"N	104°43'58.357"W
Facility Reference Pt			3214305.57	1310913.74	40°11'03.516"N	104°43'58.656"W
Field Reference Pt			3197771.84	1268891.29	40°04'09.600"N	104°47'36.000"W

## WELLPATH DATUM

Calculation method	Minimum curvature	XTREME 8 (RKB) to Facility Vertical Datum	5041.00ft
Horizontal Reference Pt	Slot	XTREME 8 (RKB) to Mean Sea Level	5041.00ft
Vertical Reference Pt	XTREME 8 (RKB)	XTREME 8 (RKB) to Mud Line at Slot (SLOT#15 USA FED 04N-36HZ (767'FSL & 591'FWL, SEC.36))	5041.00ft
MD Reference Pt	XTREME 8 (RKB)	Section Origin	N 0.00, E 0.00 ft
Field Vertical Reference	Mean Sea Level	Section Azimuth	0.23°

# Actual Wellpath Report

USA FED 04N-36HZ AWP

Page 2 of 7

## REFERENCE WELLPATH IDENTIFICATION

Operator	KERR-MCGEE OIL & GAS ONSHORE LP	Slot	SLOT#15 USA FED 04N-36HZ (767'FSL & 591'FWL, SEC.36)
Area	COLORADO	Well	USA FED 04N-36HZ
Field	WELD COUNTY (KERR MCGEE)	Wellbore	USA FED 04N-36HZ AWP
Facility	SEC.36-T3N-R66W		

## WELLPATH DATA (144 stations) † = interpolated/extrapolated station

MD [ft]	Inclination [°]	Azimuth [°]	TVD [ft]	Vert Sect [ft]	North [ft]	East [ft]	Latitude	Longitude	DLS [°/100ft]	Comments
0.00†	0.000	35.450	0.00	0.00	0.00	0.00	40°10'36.296"N	104°43'58.357"W	0.00	
17.00	0.000	35.450	17.00	0.00	0.00	0.00	40°10'36.296"N	104°43'58.357"W	0.00	TIE ON
84.00	0.320	35.450	84.00	0.15	0.15	0.11	40°10'36.298"N	104°43'58.356"W	0.48	BEGIN BHI MWD SURVEYS
172.00	0.530	344.460	172.00	0.75	0.74	0.14	40°10'36.303"N	104°43'58.355"W	0.47	
267.00	0.530	11.300	266.99	1.60	1.60	0.11	40°10'36.312"N	104°43'58.356"W	0.26	
360.00	0.400	33.520	359.99	2.29	2.29	0.37	40°10'36.319"N	104°43'58.352"W	0.24	
452.00	0.460	36.610	451.99	2.86	2.86	0.77	40°10'36.324"N	104°43'58.347"W	0.07	
544.00	0.240	17.550	543.99	3.34	3.34	1.05	40°10'36.329"N	104°43'58.343"W	0.27	
637.00	0.340	73.500	636.99	3.61	3.60	1.37	40°10'36.332"N	104°43'58.339"W	0.31	
730.00	0.320	32.140	729.98	3.91	3.90	1.78	40°10'36.335"N	104°43'58.334"W	0.25	
823.00	0.520	275.720	822.98	4.17	4.16	1.49	40°10'36.337"N	104°43'58.338"W	0.78	
891.00	0.260	261.130	890.98	4.17	4.17	1.03	40°10'36.337"N	104°43'58.344"W	0.41	LAST BHI MWD SURVEY
979.00	0.880	243.340	978.98	3.83	3.83	0.23	40°10'36.334"N	104°43'58.354"W	0.72	BEGIN BHI MWD+IFR SURVEYS
1071.00	0.960	249.270	1070.96	3.24	3.24	-1.12	40°10'36.328"N	104°43'58.371"W	0.14	
1163.00	2.260	214.750	1162.93	1.47	1.48	-2.87	40°10'36.311"N	104°43'58.394"W	1.70	
1255.00	4.060	204.110	1254.78	-3.00	-2.98	-5.24	40°10'36.267"N	104°43'58.424"W	2.05	
1345.00	5.550	203.150	1344.47	-9.93	-9.89	-8.25	40°10'36.198"N	104°43'58.463"W	1.66	
1437.00	6.660	197.700	1435.94	-19.11	-19.07	-11.62	40°10'36.108"N	104°43'58.507"W	1.36	
1529.00	8.130	181.610	1527.19	-30.71	-30.65	-13.43	40°10'35.993"N	104°43'58.530"W	2.75	
1620.00	8.530	172.690	1617.23	-43.83	-43.78	-12.75	40°10'35.863"N	104°43'58.521"W	1.48	
1712.00	10.090	169.510	1708.02	-58.52	-58.47	-10.41	40°10'35.718"N	104°43'58.491"W	1.78	
1804.00	9.800	168.200	1798.63	-74.09	-74.06	-7.35	40°10'35.564"N	104°43'58.452"W	0.40	
1896.00	11.220	168.620	1889.09	-90.52	-90.50	-3.98	40°10'35.402"N	104°43'58.408"W	1.55	
1988.00	11.520	166.790	1979.28	-108.22	-108.22	-0.11	40°10'35.227"N	104°43'58.358"W	0.51	
2080.00	11.230	171.200	2069.48	-126.00	-126.02	3.36	40°10'35.051"N	104°43'58.314"W	1.00	
2171.00	10.910	170.420	2158.78	-143.24	-143.27	6.15	40°10'34.880"N	104°43'58.278"W	0.39	
2262.00	10.520	170.400	2248.20	-159.91	-159.95	8.97	40°10'34.715"N	104°43'58.242"W	0.43	
2354.00	9.570	168.300	2338.78	-175.67	-175.72	11.92	40°10'34.560"N	104°43'58.203"W	1.11	
2445.00	9.990	178.250	2428.47	-190.96	-191.02	13.69	40°10'34.408"N	104°43'58.181"W	1.91	
2537.00	10.940	179.260	2518.94	-207.66	-207.72	14.05	40°10'34.243"N	104°43'58.176"W	1.05	
2628.00	10.390	179.480	2608.37	-224.50	-224.56	14.23	40°10'34.077"N	104°43'58.174"W	0.61	
2719.00	9.810	180.290	2697.95	-240.46	-240.52	14.27	40°10'33.919"N	104°43'58.173"W	0.66	
2811.00	10.930	177.770	2788.45	-257.01	-257.07	14.57	40°10'33.756"N	104°43'58.169"W	1.31	
2896.00	10.820	166.540	2871.93	-272.82	-272.89	16.74	40°10'33.599"N	104°43'58.141"W	2.49	
2981.00	10.830	166.790	2955.42	-288.33	-288.42	20.42	40°10'33.446"N	104°43'58.094"W	0.06	
3066.00	10.650	173.580	3038.94	-303.90	-304.00	23.13	40°10'33.292"N	104°43'58.059"W	1.50	
3152.00	10.340	174.770	3123.50	-319.48	-319.58	24.72	40°10'33.138"N	104°43'58.039"W	0.44	
3237.00	10.440	172.410	3207.10	-334.70	-334.81	26.43	40°10'32.987"N	104°43'58.017"W	0.51	
3322.00	9.700	172.370	3290.79	-349.43	-349.54	28.40	40°10'32.842"N	104°43'57.991"W	0.87	
3408.00	9.090	174.840	3375.64	-363.37	-363.49	29.97	40°10'32.704"N	104°43'57.971"W	0.85	
3493.00	8.900	172.890	3459.59	-376.57	-376.70	31.39	40°10'32.573"N	104°43'57.953"W	0.42	
3578.00	8.250	171.000	3543.64	-389.11	-389.25	33.16	40°10'32.449"N	104°43'57.930"W	0.83	
3663.00	8.570	173.540	3627.73	-401.42	-401.57	34.82	40°10'32.328"N	104°43'57.908"W	0.58	
3748.00	8.560	176.950	3711.78	-414.03	-414.18	35.87	40°10'32.203"N	104°43'57.895"W	0.60	
3833.00	9.550	174.890	3795.72	-427.37	-427.52	36.84	40°10'32.071"N	104°43'57.882"W	1.23	

REFERENCE WELLPATH IDENTIFICATION			
Operator	KERR-MCGEE OIL & GAS ONSHORE LP	Slot	SLOT#15 USA FED 04N-36HZ (767'FSL & 591'FWL, SEC.36)
Area	COLORADO	Well	USA FED 04N-36HZ
Field	WELD COUNTY (KERR MCGEE)	Wellbore	USA FED 04N-36HZ AWP
Facility	SEC.36-T3N-R66W		

WELLPATH DATA (144 stations)										
MD [ft]	Inclination [°]	Azimuth [°]	TVD [ft]	Vert Sect [ft]	North [ft]	East [ft]	Latitude	Longitude	DLS [°/100ft]	Comments
3919.00	9.740	175.180	3880.51	-441.72	-441.87	38.08	40°10'31.929"N	104°43'57.866"W	0.23	
4004.00	9.360	168.560	3964.33	-455.65	-455.81	40.06	40°10'31.792"N	104°43'57.841"W	1.37	
4089.00	10.090	168.410	4048.11	-469.70	-469.88	42.93	40°10'31.653"N	104°43'57.804"W	0.86	
4175.00	10.300	169.670	4132.75	-484.64	-484.83	45.82	40°10'31.505"N	104°43'57.767"W	0.36	
4260.00	11.040	174.150	4216.28	-500.20	-500.40	48.01	40°10'31.351"N	104°43'57.739"W	1.31	
4345.00	10.610	175.210	4299.77	-516.09	-516.29	49.49	40°10'31.194"N	104°43'57.719"W	0.56	
4430.00	9.900	170.590	4383.41	-531.09	-531.30	51.34	40°10'31.046"N	104°43'57.696"W	1.28	
4515.00	9.760	169.720	4467.17	-545.37	-545.60	53.82	40°10'30.904"N	104°43'57.664"W	0.24	
4601.00	10.620	168.850	4551.81	-560.31	-560.54	56.65	40°10'30.757"N	104°43'57.627"W	1.02	
4686.00	10.350	172.040	4635.39	-575.55	-575.79	59.23	40°10'30.606"N	104°43'57.594"W	0.75	
4771.00	10.070	175.570	4719.04	-590.51	-590.76	60.86	40°10'30.458"N	104°43'57.573"W	0.81	
4856.00	10.490	172.530	4802.68	-605.59	-605.84	62.44	40°10'30.309"N	104°43'57.553"W	0.81	
4941.00	10.010	171.500	4886.32	-620.56	-620.82	64.54	40°10'30.161"N	104°43'57.526"W	0.60	
5027.00	10.440	174.340	4970.96	-635.69	-635.97	66.41	40°10'30.011"N	104°43'57.501"W	0.77	
5112.00	10.180	176.820	5054.59	-650.85	-651.13	67.59	40°10'29.861"N	104°43'57.486"W	0.61	
5197.00	8.290	174.850	5138.48	-664.45	-664.74	68.55	40°10'29.727"N	104°43'57.474"W	2.25	
5283.00	7.280	175.120	5223.69	-676.05	-676.34	69.57	40°10'29.612"N	104°43'57.461"W	1.18	
5368.00	6.930	173.790	5308.03	-686.51	-686.80	70.59	40°10'29.509"N	104°43'57.448"W	0.45	
5453.00	5.390	172.450	5392.54	-695.56	-695.86	71.66	40°10'29.419"N	104°43'57.434"W	1.82	
5538.00	4.620	170.510	5477.22	-702.89	-703.19	72.75	40°10'29.347"N	104°43'57.420"W	0.93	
5624.00	4.140	168.430	5562.97	-709.35	-709.65	73.95	40°10'29.283"N	104°43'57.404"W	0.59	
5709.00	3.020	165.950	5647.80	-714.52	-714.83	75.11	40°10'29.232"N	104°43'57.389"W	1.33	
5794.00	1.920	157.060	5732.72	-718.00	-718.31	76.21	40°10'29.198"N	104°43'57.375"W	1.37	
5879.00	0.970	115.170	5817.69	-719.61	-719.93	77.41	40°10'29.182"N	104°43'57.360"W	1.60	
5965.00	0.760	47.550	5903.68	-719.53	-719.86	78.49	40°10'29.182"N	104°43'57.346"W	1.14	
6135.00	0.090	263.210	6073.68	-718.78	-719.11	79.19	40°10'29.190"N	104°43'57.337"W	0.49	
6390.00	0.830	157.070	6328.67	-720.51	-720.84	79.71	40°10'29.173"N	104°43'57.330"W	0.34	
6475.00	0.140	332.430	6413.67	-720.98	-721.31	79.90	40°10'29.168"N	104°43'57.328"W	1.14	
6646.00	0.460	106.520	6584.67	-720.99	-721.32	80.46	40°10'29.168"N	104°43'57.320"W	0.33	
6731.00	1.530	35.690	6669.65	-720.16	-720.50	81.45	40°10'29.176"N	104°43'57.308"W	1.70	
6816.00	4.630	9.100	6754.52	-715.84	-716.19	82.66	40°10'29.219"N	104°43'57.292"W	3.92	
6858.00	10.470	6.020	6796.14	-710.37	-710.71	83.33	40°10'29.273"N	104°43'57.284"W	13.93	
6901.00	15.760	6.720	6838.01	-700.67	-701.02	84.42	40°10'29.369"N	104°43'57.269"W	12.31	
6944.00	19.460	4.900	6878.98	-687.73	-688.08	85.72	40°10'29.496"N	104°43'57.253"W	8.70	
6986.00	22.480	1.520	6918.20	-672.72	-673.08	86.53	40°10'29.645"N	104°43'57.242"W	7.74	
7029.00	25.870	1.560	6957.42	-655.12	-655.48	87.00	40°10'29.819"N	104°43'57.236"W	7.88	
7072.00	28.560	0.030	6995.66	-635.46	-635.82	87.26	40°10'30.013"N	104°43'57.233"W	6.46	
7114.00	33.060	359.580	7031.72	-613.95	-614.31	87.18	40°10'30.225"N	104°43'57.234"W	10.73	
7157.00	38.190	359.300	7066.66	-588.92	-589.27	86.93	40°10'30.473"N	104°43'57.237"W	11.94	
7200.00	43.640	359.560	7099.15	-560.77	-561.12	86.66	40°10'30.751"N	104°43'57.241"W	12.68	
7242.00	47.410	359.660	7128.57	-530.81	-531.16	86.45	40°10'31.047"N	104°43'57.243"W	8.98	
7285.00	50.350	359.930	7156.84	-498.42	-498.77	86.34	40°10'31.367"N	104°43'57.245"W	6.85	
7328.00	52.650	358.920	7183.61	-464.77	-465.12	86.00	40°10'31.700"N	104°43'57.249"W	5.66	
7370.00	56.490	357.850	7207.95	-430.57	-430.92	85.03	40°10'32.038"N	104°43'57.262"W	9.38	
7413.00	61.550	356.860	7230.08	-393.77	-394.11	83.32	40°10'32.401"N	104°43'57.284"W	11.93	

REFERENCE WELLPATH IDENTIFICATION			
Operator	KERR-MCGEE OIL & GAS ONSHORE LP	Slot	SLOT#15 USA FED 04N-36HZ (767'FSL & 591'FWL, SEC.36)
Area	COLORADO	Well	USA FED 04N-36HZ
Field	WELD COUNTY (KERR MCGEE)	Wellbore	USA FED 04N-36HZ AWP
Facility	SEC.36-T3N-R66W		

WELLPATH DATA (144 stations) † = interpolated/extrapolated station										
MD [ft]	Inclination [°]	Azimuth [°]	TVD [ft]	Vert Sect [ft]	North [ft]	East [ft]	Latitude	Longitude	DLS [°/100ft]	Comments
7455.00	66.620	357.560	7248.43	-356.06	-356.39	81.48	40°10'32.774"N	104°43'57.307"W	12.16	
7498.00	71.600	359.630	7263.76	-315.91	-316.24	80.51	40°10'33.171"N	104°43'57.320"W	12.42	
7540.00	75.960	2.200	7275.49	-275.60	-275.93	81.17	40°10'33.569"N	104°43'57.311"W	11.93	
7583.00	79.030	1.930	7284.80	-233.65	-233.99	82.68	40°10'33.984"N	104°43'57.292"W	7.17	
7625.00	81.860	1.750	7291.77	-192.25	-192.59	84.01	40°10'34.393"N	104°43'57.275"W	6.75	
7662.00	84.760	1.710	7296.08	-155.52	-155.87	85.12	40°10'34.756"N	104°43'57.260"W	7.84	
7699.00†	86.092	1.466	7299.03	-118.65	-119.00	86.14	40°10'35.120"N	104°43'57.247"W	3.66	7" CASING POINT
7782.00	89.080	0.920	7302.52	-35.74	-36.10	87.86	40°10'35.939"N	104°43'57.225"W	3.66	
7867.00	89.230	0.180	7303.78	49.24	48.89	88.68	40°10'36.779"N	104°43'57.215"W	0.89	
7952.00	90.520	0.230	7303.96	134.24	133.88	88.98	40°10'37.619"N	104°43'57.211"W	1.52	
8037.00	90.650	359.580	7303.10	219.24	218.88	88.84	40°10'38.459"N	104°43'57.212"W	0.78	
8122.00	90.710	359.630	7302.09	304.22	303.87	88.26	40°10'39.299"N	104°43'57.220"W	0.09	
8208.00	91.450	359.720	7300.47	390.20	389.85	87.77	40°10'40.149"N	104°43'57.226"W	0.87	
8293.00	90.770	359.310	7298.82	475.18	474.83	87.05	40°10'40.988"N	104°43'57.236"W	0.93	
8378.00	91.640	358.610	7297.03	560.14	559.80	85.51	40°10'41.828"N	104°43'57.255"W	1.31	
8463.00	90.990	359.020	7295.08	645.09	644.76	83.75	40°10'42.668"N	104°43'57.278"W	0.90	
8549.00	90.620	358.820	7293.87	731.06	730.73	82.13	40°10'43.517"N	104°43'57.299"W	0.49	
8634.00	89.910	0.090	7293.48	816.05	815.73	81.32	40°10'44.357"N	104°43'57.309"W	1.71	
8719.00	90.120	0.930	7293.46	901.05	900.72	82.08	40°10'45.197"N	104°43'57.300"W	1.02	
8804.00	89.940	1.220	7293.41	986.04	985.71	83.67	40°10'46.037"N	104°43'57.279"W	0.40	
8889.00	90.400	1.380	7293.16	1071.02	1070.68	85.60	40°10'46.877"N	104°43'57.254"W	0.57	
8975.00	89.910	1.180	7292.93	1157.01	1156.66	87.52	40°10'47.726"N	104°43'57.229"W	0.62	
9060.00	90.060	1.730	7292.95	1241.99	1241.64	89.68	40°10'48.566"N	104°43'57.202"W	0.67	
9145.00	89.110	1.320	7293.57	1326.96	1326.60	91.94	40°10'49.405"N	104°43'57.172"W	1.22	
9230.00	90.220	1.840	7294.06	1411.94	1411.57	94.29	40°10'50.245"N	104°43'57.142"W	1.44	
9315.00	90.280	0.970	7293.69	1496.92	1496.54	96.37	40°10'51.085"N	104°43'57.115"W	1.03	
9401.00	90.590	0.750	7293.04	1582.91	1582.53	97.66	40°10'51.935"N	104°43'57.099"W	0.44	
9486.00	90.340	359.330	7292.35	1667.90	1667.52	97.72	40°10'52.774"N	104°43'57.098"W	1.70	
9571.00	89.630	359.780	7292.37	1752.90	1752.52	97.06	40°10'53.614"N	104°43'57.107"W	0.99	
9656.00	89.970	359.930	7292.67	1837.89	1837.52	96.84	40°10'54.454"N	104°43'57.109"W	0.44	
9741.00	89.290	359.490	7293.22	1922.89	1922.51	96.41	40°10'55.294"N	104°43'57.115"W	0.95	
9826.00	89.540	359.540	7294.09	2007.88	2007.51	95.69	40°10'56.134"N	104°43'57.124"W	0.30	
9911.00	90.250	359.300	7294.24	2092.87	2092.50	94.83	40°10'56.974"N	104°43'57.135"W	0.88	
9997.00	89.850	359.330	7294.17	2178.86	2178.49	93.81	40°10'57.824"N	104°43'57.148"W	0.47	
10082.00	89.140	358.540	7294.92	2263.83	2263.48	92.23	40°10'58.664"N	104°43'57.169"W	1.25	
10167.00	89.260	358.410	7296.10	2348.78	2348.44	89.96	40°10'59.503"N	104°43'57.198"W	0.21	
10253.00	89.200	359.070	7297.26	2434.74	2434.41	88.07	40°11'00.353"N	104°43'57.222"W	0.77	
10338.00	89.080	359.650	7298.53	2519.73	2519.39	87.12	40°11'01.193"N	104°43'57.234"W	0.70	
10423.00	89.410	1.410	7299.65	2604.71	2604.38	87.91	40°11'02.033"N	104°43'57.224"W	2.11	
10508.00	89.450	0.700	7300.50	2689.70	2689.36	89.48	40°11'02.872"N	104°43'57.204"W	0.84	
10593.00	89.660	0.230	7301.16	2774.70	2774.35	90.16	40°11'03.712"N	104°43'57.195"W	0.61	
10679.00	89.480	0.580	7301.80	2860.69	2860.35	90.77	40°11'04.562"N	104°43'57.187"W	0.46	
10764.00	90.460	2.000	7301.85	2945.68	2945.32	92.69	40°11'05.402"N	104°43'57.163"W	2.03	
10849.00	90.740	0.930	7300.96	3030.65	3030.29	94.86	40°11'06.241"N	104°43'57.135"W	1.30	
10934.00	91.260	2.880	7299.48	3115.60	3115.23	97.68	40°11'07.081"N	104°43'57.098"W	2.37	

# Actual Wellpath Report

USA FED 04N-36HZ AWP

Page 5 of 7

## REFERENCE WELLPATH IDENTIFICATION

Operator	KERR-MCGEE OIL & GAS ONSHORE LP	Slot	SLOT#15 USA FED 04N-36HZ (767'FSL & 591'FWL, SEC.36)
Area	COLORADO	Well	USA FED 04N-36HZ
Field	WELD COUNTY (KERR MCGEE)	Wellbore	USA FED 04N-36HZ AWP
Facility	SEC.36-T3N-R66W		

## WELLPATH DATA (144 stations)

MD [ft]	Inclination [°]	Azimuth [°]	TVD [ft]	Vert Sect [ft]	North [ft]	East [ft]	Latitude	Longitude	DLS [°/100ft]	Comments
11019.00	91.390	2.810	7297.51	3200.48	3200.10	101.90	40°11'07.919"N	104°43'57.044"W	0.17	
11105.00	90.520	2.110	7296.08	3286.41	3286.01	105.59	40°11'08.768"N	104°43'56.996"W	1.30	
11190.00	91.140	1.820	7294.85	3371.36	3370.95	108.51	40°11'09.608"N	104°43'56.959"W	0.81	
11275.00	89.750	1.970	7294.19	3456.32	3455.90	111.32	40°11'10.447"N	104°43'56.923"W	1.64	
11360.00	90.650	1.640	7293.89	3541.28	3540.85	113.99	40°11'11.287"N	104°43'56.888"W	1.13	
11445.00	90.150	0.190	7293.30	3626.27	3625.84	115.35	40°11'12.127"N	104°43'56.871"W	1.80	
11531.00	89.170	359.660	7293.81	3712.27	3711.83	115.24	40°11'12.976"N	104°43'56.872"W	1.30	
11752.00	91.330	359.520	7292.84	3933.24	3932.81	113.66	40°11'15.160"N	104°43'56.893"W	0.98	LAST BHI MWD+IFR SURVEY
11808.00	91.330	359.520	7291.54	3989.22	3988.80	113.19	40°11'15.713"N	104°43'56.899"W	0.00	PROJECTION TO BIT

## HOLE & CASING SECTIONS - Ref Wellbore: USA FED 04N-36HZ AWP Ref Wellpath: USA FED 04N-36HZ AWP

String/Diameter	Start MD [ft]	End MD [ft]	Interval [ft]	Start TVD [ft]	End TVD [ft]	Start N/S [ft]	Start E/W [ft]	End N/S [ft]	End E/W [ft]
13.5in Open Hole	17.00	941.00	924.00	17.00	940.98	0.00	0.00	4.04	0.68
9.625in Casing Surface	17.00	941.00	924.00	17.00	940.98	0.00	0.00	4.04	0.68
8.75in Open Hole	941.00	7710.00	6769.00	940.98	7299.74	4.04	0.68	-108.03	86.41
7in Casing Intermediate	17.00	7699.00	7682.00	17.00	7299.03	0.00	0.00	-119.00	86.14
6.125in Open Hole	7710.00	11808.00	4098.00	7299.74	7291.54	-108.03	86.41	3988.80	113.19



### REFERENCE WELLPATH IDENTIFICATION

Operator	KERR-MCGEE OIL & GAS ONSHORE LP	Slot	SLOT#15 USA FED 04N-36HZ (767'FSL & 591'FWL, SEC.36)
Area	COLORADO	Well	USA FED 04N-36HZ
Field	WELD COUNTY (KERR MCGEE)	Wellbore	USA FED 04N-36HZ AWP
Facility	SEC.36-T3N-R66W		

### TARGETS

Name	MD [ft]	TVD [ft]	North [ft]	East [ft]	Grid East [US ft]	Grid North [US ft]	Latitude	Longitude	Shape
USA FED 13-36HZ PAD SECTION LINES		0.00	-0.30	-30.19	3214322.42	1308159.11	40°10'36.293"N	104°43'58.746"W	polygon
USA FED 04N-36HZ BHL (460'FNL & 665'FWL, SEC.36) REV-2		7291.00	4014.57	90.98	3214408.85	1312174.70	40°11'15.968"N	104°43'57.185"W	point
USA FED 04N-36HZ BHL ON PLAT (460'FNL & 515'FWL, SEC.36) REV-1		7291.00	4014.57	-58.98	3214258.90	1312173.40	40°11'15.968"N	104°43'59.117"W	point
USA FED 04N-36HZ LANDBOX		7291.00	0.00	0.00	3214352.61	1308159.67	40°10'36.296"N	104°43'58.357"W	polygon
USA FED 13-36HZ PAD HARDLINES (460' SETBACKS)		7440.00	-0.30	-30.19	3214322.42	1308159.11	40°10'36.293"N	104°43'58.746"W	polygon

### WELLPATH COMPOSITION - Ref Wellbore: USA FED 04N-36HZ AWP Ref Wellpath: USA FED 04N-36HZ AWP

Start MD [ft]	End MD [ft]	Positional Uncertainty Model	Log Name/Comment	Wellbore
17.00	891.00	NaviTrak (MagCorr)	BHI MWD SURVEYS 13 1/2" HOLE <84-891>	USA FED 04N-36HZ AWP
891.00	7662.00	NaviTrak (MAGCORR,IFR)	BHI NAVITRAK MWD+IFR 8 3/4" <979-7662>	USA FED 04N-36HZ AWP
7662.00	11752.00	NaviTrak (MAGCORR,IFR)	BHI NAVITRAK MWD+IFR 6 1/8" <7782-11752>	USA FED 04N-36HZ AWP
11752.00	11808.00	Blind Drilling (std)	Projection to bit	USA FED 04N-36HZ AWP

# Actual Wellpath Report

USA FED 04N-36HZ AWP

Page 7 of 7

## REFERENCE WELLPATH IDENTIFICATION

Operator	KERR-MCGEE OIL & GAS ONSHORE LP	Slot	SLOT#15 USA FED 04N-36HZ (767'FSL & 591'FWL, SEC.36)
Area	COLORADO	Well	USA FED 04N-36HZ
Field	WELD COUNTY (KERR MCGEE)	Wellbore	USA FED 04N-36HZ AWP
Facility	SEC.36-T3N-R66W		

## WELLPATH COMMENTS

MD [ft]	Inclination [°]	Azimuth [°]	TVD [ft]	Comment
17.00	0.000	35.450	17.00	TIE ON
84.00	0.320	35.450	84.00	BEGIN BHI MWD SURVEYS
891.00	0.260	261.130	890.98	LAST BHI MWD SURVEY
979.00	0.880	243.340	978.98	BEGIN BHI MWD+IFR SURVEYS
7699.00	86.092	1.466	7299.03	7" CASING POINT
11752.00	91.330	359.520	7292.84	LAST BHI MWD+IFR SURVEY
11808.00	91.330	359.520	7291.54	PROJECTION TO BIT