

**ANADARKO PETROLEUM CORP - EBUS
DO NOT MAIL - PO BOX 4995
THE WOODLANDS, Texas**

USA Fed 29N-36HZ

Xtreme 8

Post Job Summary **Cement Surface Casing**

Prepared for:
Date Prepared: 9/26/2013
Version: 1

Service Supervisor: BULINSKI, MATTHEW

Submitted by: FINNEY, SEAN

HALLIBURTON

Wellbore Geometry

Job Tubulars					MD		Shoe Joint Length ft
Type	Description	Size in	ID in	Wt lbm/ft	Top ft	Bottom ft	
Casing	9 5/8" Surface Casing	9.63	8.921	36.00	0.00	940.00	42.00
Open Hole Section	13 1/2" Open Hole Section		13.500		0.00	940.00	0.00

HALLIBURTON

Pumping Schedule

Stage /Plug #	Fluid #	Fluid Type	Fluid Name	Surface Density lbm/gal	Avg Rate bbl/min	Surface Volume	Downhole Volume
1	1	Spacer	Fresh Water Spacer	8.33	0.00	10.0 bbl	10.0 bbl
1	2	Spacer	Mud Flush	8.40	0.00	12.0 bbl	12.0 bbl
1	3	Cement Slurry	SwiftCem B2	14.20		360.0 sacks	360.0 sacks

Fluids Pumped

Stage/Plug # 1 Fluid 1: Fresh Water Spacer
DUMMY MUD / FLUSH / SPACER SBC MATERIAL

Fluid Density: 8.33 lbm/gal
Fluid Volume: 10.00 bbl
Pump Rate: 0.00 bbl/min

Stage/Plug # 1 Fluid 2: Mud Flush
DUMMY MUD / FLUSH / SPACER SBC MATERIAL
42 gal/bbl Mud Flush III
3.5 lbm/bbl Mud Flush III

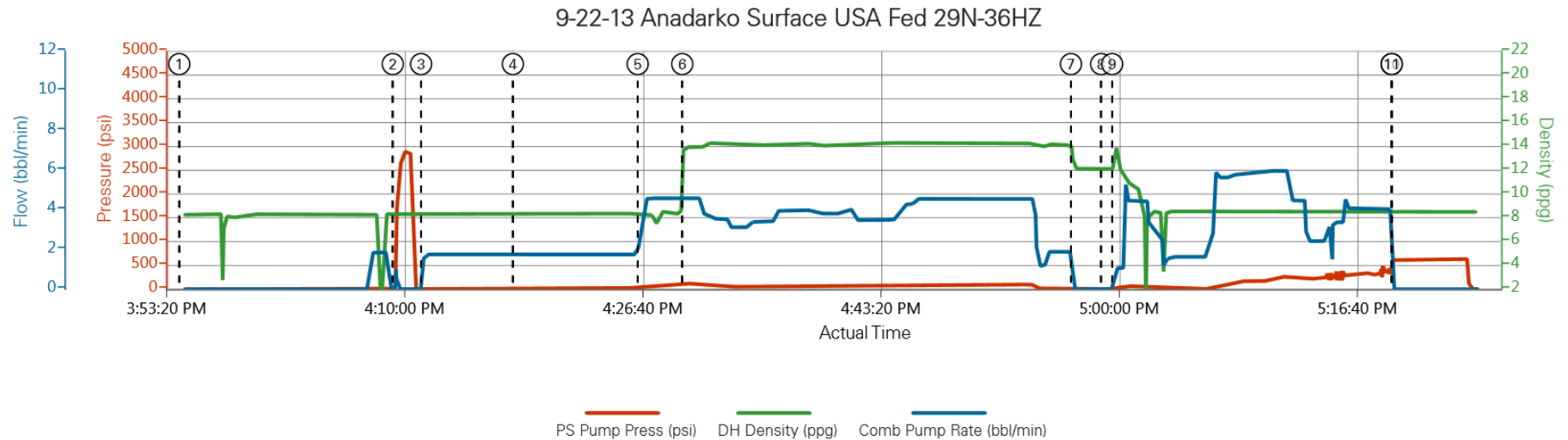
Fluid Density: 8.40 lbm/gal
Fluid Volume: 12.00 bbl
Pump Rate: 0.00 bbl/min

Stage/Plug # 1 Fluid 3: SwiftCem B2
SWIFTCEM (TM) SYSTEM

Fluid Weight: 14.20 lbm/gal
Slurry Yield: 1.55 ft³/sack
Total Mixing Fluid: 7.68 Gal
Surface Volume: 360.0 sacks
Sacks: 360.0 sacks
Calculated Fill: 900.00 ft
Calculated Top of Fluid: 0.00 ft

HALLIBURTON

Data Acquisition



- ① Start Job
- ② Test Lines
- ③ Pump Spacer 1
- ④ Pump Spacer 2
- ⑤ Pump spacer 1
- ⑥ Pump Cement
- ⑦ Shutdown
- ⑧ Drop Top Plug
- ⑨ Pump Displacement
- ⑩ Bump Plug
- ⑪ End Job

▼ Halliburton | iCem Service®

Created: 2013-09-22 15:51:06 , Version: 1.4.96

Edit

Customer: ANADARKO PETROLEUM CORP -
EBUS

Representative: M. Bulinski

Job Date: 9/22/2013 3:54:19 PM

Sales Order #: 900763342

Well: 29N-36HZ

HALLIBURTON

Service Supervisor Reports

Job Log

Date/Time	Chart #	Activity Code	Pump Rate	Cum Vol	Pump		Pressure (psig)		Comments
09/22/2013 11:45		Arrive at Location from Service Center							Arrived 1.25hrs early.. Rig is Tripping out DP.. Finished Running Csg at 14:35, Put Head & Manifold on for rig to circulate through while Casing Crew rigs down, and HES Rigs up
09/22/2013 12:00		Assessment Of Location Safety Meeting							Hazard Hunt on Location before spotting in trucks
09/22/2013 15:00		Safety Meeting - Pre Rig-Up							JSA on rigging up trucks and iron to rig
09/22/2013 15:40		Rig-Up Equipment							
09/22/2013 16:00		Rig-Up Completed							
09/22/2013 16:05		Safety Meeting - Pre Job							JSA with company man, rig hands, and HES hands on pump schedule
09/22/2013 16:16		Start Job							
09/22/2013 16:17		Test Lines							3000psi Pressure Test lines to rig floor
09/22/2013 16:18		Pump Spacer 1	2	10				45.0	10bbls H2O spacer
09/22/2013 16:25		Pump Spacer 2	2.5	12				45.0	12bbls Mudflush spacer
09/22/2013 16:32		Pump Spacer 1	5	10				50.0	10bbls H2O spacer
09/22/2013 16:36		Pump Cement	5	99.3				130.0	360sks Swiftcem, 14.2ppg, 1.55yield, 7.68gal/sk, Mixed with rig water and # verify by pressurized mud scales
09/22/2013 17:03		Shutdown							
09/22/2013 17:06		Drop Top Plug							Pre-Loaded
09/22/2013 17:07		Pump Displacement	5	68.5				230.0	H2O displacement, Good returns throughout.. 12bbls Cmt back to surface
09/22/2013 17:25		Bump Plug	3					607.0	slowed down last 20bbls to 3bbl/min to bump.. Plug landed at 343psi and brought to 607psi
09/22/2013 17:31		Check Floats							Floats held
09/22/2013 17:32		End Job							
09/22/2013 17:33		Safety Meeting - Pre Rig-Down							JSA on rigging down bulk trucks and iron from rig
09/22/2013 17:35		Rig-Down Equipment							
09/22/2013 18:15		Rig-Down Completed							
09/22/2013 18:30		Safety Meeting - Departing Location							JSA on Pre-tripping trucks and driving back to brighton yard

The Road to Excellence Starts with Safety

Sold To #: 300466	Ship To #: 3106851	Quote #:	Sales Order #: 900763342
Customer: ANADARKO PETROLEUM CORP - EBUS		Customer Rep: Bell, Duaine	
Well Name: USA Fed		Well #: 29N-36HZ	API/UWI #:
Field:	City (SAP): PLATTEVILLE	County/Parish: Weld	State: Colorado
Contractor: Xtreme		Rig/Platform Name/Num: Xtreme 8	
Job Purpose: Cement Surface Casing			
Well Type: Development Well		Job Type: Cement Surface Casing	
Sales Person: FLING, MATTHEW	Srv Supervisor: BULINSKI, MATTHEW		MBU ID Emp #: 483865

Job Personnel

HES Emp Name	Exp Hrs	Emp #	HES Emp Name	Exp Hrs	Emp #	HES Emp Name	Exp Hrs	Emp #
BULINSKI, MATTHEW J	0.0	483865	CARPENTER, JACOB P	0.0	499500	VIATOR, JASON R.	0.0	550394

Equipment

HES Unit #	Distance-1 way	HES Unit #	Distance-1 way	HES Unit #	Distance-1 way	HES Unit #	Distance-1 way
11338223	15 mile	11542778	15 mile	11605598	15 mile	11764052	15 mile

Job Hours

Date	On Location Hours	Operating Hours	Date	On Location Hours	Operating Hours	Date	On Location Hours	Operating Hours
TOTAL			Total is the sum of each column separately					

Job

Job Times

Formation Name						Date	Time	Time Zone
Formation Depth (MD)	Top		Bottom		Called Out	22 - Sep - 2013	08:30	MST
Form Type			BHST		On Location	22 - Sep - 2013	11:45	MST
Job depth MD	940. ft		Job Depth TVD	940. ft	Job Started	22 - Sep - 2013	16:16	MST
Water Depth			Wk Ht Above Floor		Job Completed	22 - Sep - 2013	17:32	MST
Perforation Depth (MD)	From		To		Departed Loc	22 - Sep - 2013	18:30	MST

Well Data

Description	New / Used	Max pressure psig	Size in	ID in	Weight lbm/ft	Thread	Grade	Top MD ft	Bottom MD ft	Top TVD ft	Bottom TVD ft
13 1/2" Open Hole Section				13.5				.	940.		
9 5/8" Surface Casing	Unknown		9.625	8.921	36.		J-55	.	940.		

Sales/Rental/3rd Party (HES)

Description	Qty	Qty uom	Depth	Supplier
CMT CASING EQUIPMENT BOM	1	JOB		
MILEAGE FOR CEMENTING CREW,ZI	30	MI		
ZI FUEL SURCHG-CARS/PICKUPS<1 1/2TON	30	MI		
KIT,HALL WELD-A	1	EA		
CNTRLZR, 9 5/8x13 3/4,#500-0963-1375	6	EA		
PLUG,CMTG,TOP,9 5/8,HWE,8.16 MIN/9.06 MA	1	EA		
COLLAR-STOP-9 5/8"-FRICTION-HINGED	2	EA		
Description	Qty	Qty uom	Depth	Supplier

BASKET - CEMENT - 9-5/8 CSG X 12-1/4						1	EA		
Fluid Data									
Stage/Plug #: 1									
Fluid #	Stage Type	Fluid Name	Qty	Qty uom	Mixing Density lbm/gal	Yield ft ³ /sk	Mix Fluid Gal/sk	Rate bbl/min	Total Mix Fluid Gal/sk
1	Fresh Water Spacer		10.00	bbl	8.33	.0	.0	.0	
2	Mud Flush		12.00	bbl	8.4	.0	.0	.0	
42 gal/bbl		MUD FLUSH III - SBM (528788)							
3.5 lbm/bbl		MUD FLUSH III, 40 LB SACK (101633304)							
3	SwiftCem B2	SWIFTCM (TM) SYSTEM (452990)	360.0	sacks	14.2	1.55	7.68		7.68
7.68 Gal		FRESH WATER							
Calculated Values		Pressures		Volumes					
Displacement		Shut In: Instant		Lost Returns		Cement Slurry		Pad	
Top Of Cement		5 Min		Cement Returns		Actual Displacement		Treatment	
Frac Gradient		15 Min		Spacers		Load and Breakdown		Total Job	
Rates									
Circulating		Mixing		Displacement		Avg. Job			
Cement Left In Pipe		Amount	42 ft	Reason	Shoe Joint				
Frac Ring # 1 @	ID	Frac ring # 2 @	ID	Frac Ring # 3 @	ID	Frac Ring # 4 @	ID		
The Information Stated Herein Is Correct				Customer Representative Signature					

