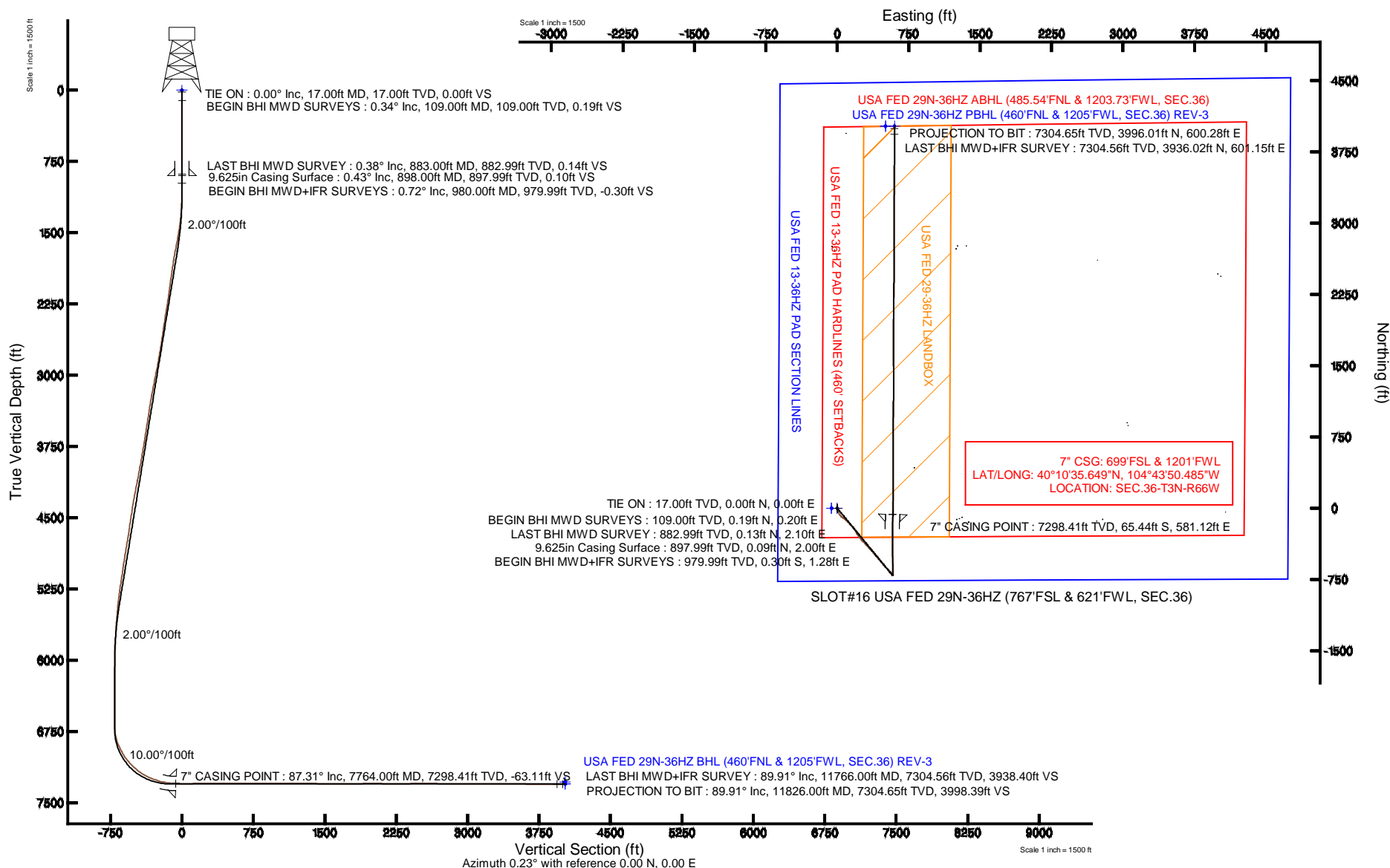


KERR-MCGEE OIL & GAS ONSHORE LP

Location: COLORADO Slot: SLOT#16 USA FED 29N-36HZ (767'FSL & 621'FWL, SEC.36)
 Field: WELD COUNTY (KERR MCGEE) Well: USA FED 29N-36HZ
 Facility: SEC.36-T3N-R66W Wellbore: USA FED 29N-36HZ PWB

Plot reference wellpath is USA FED 29N-36HZ (REV-A.0) PWP

True vertical depths are referenced to XTREME 8 (RKB)	Grid System: NAD83 / Lambert Colorado SP, Northern Zone (501), US feet
Measured depths are referenced to XTREME 8 (RKB)	North Reference: True north
XTREME 8 (RKB) to Mean Sea Level: 5041 feet	Scale: True distance
Mean Sea Level to Mud line (At Slot: SLOT#16 USA FED 29N-36HZ (767'FSL & 621'FWL, SEC.36)): 0 feet	Depths are in feet
Coordinates are in feet referenced to Slot	Created by: robale01 on 19/Nov/2013





Actual Wellpath Report

USA FED 29N-36HZ AWP

Page 1 of 7



REFERENCE WELLPATH IDENTIFICATION

Operator	KERR-MCGEE OIL & GAS ONSHORE LP	Slot	SLOT#16 USA FED 29N-36HZ (767'FSL & 621'FWL, SEC.36)
Area	COLORADO	Well	USA FED 29N-36HZ
Field	WELD COUNTY (KERR MCGEE)	Wellbore	USA FED 29N-36HZ AWP
Facility	SEC.36-T3N-R66W		

REPORT SETUP INFORMATION

Projection System	NAD83 / Lambert Colorado SP, Northern Zone (501), US feet	Software System	WellArchitect® 4.0.0
North Reference	True	User	Robiale01
Scale	0.999958	Report Generated	19/Nov/2013 at 15:15
Convergence at slot	n/a	Database/Source file	WellArchitectDB/USA_FED_29N-36HZ_AWP.xml

WELLPATH LOCATION

	Local coordinates		Grid coordinates		Geographic coordinates	
	North[ft]	East[ft]	Easting[US ft]	Northing[US ft]	Latitude	Longitude
Slot Location	-2754.50	53.09	3214382.49	1308159.93	40°10'36.296"N	104°43'57.972"W
Facility Reference Pt			3214305.57	1310913.74	40°11'03.516"N	104°43'58.656"W
Field Reference Pt			3197771.84	1268891.29	40°04'09.600"N	104°47'36.000"W

WELLPATH DATUM

Calculation method	Minimum curvature	XTREME 8 (RKB) to Facility Vertical Datum	5041.00ft
Horizontal Reference Pt	Slot	XTREME 8 (RKB) to Mean Sea Level	5041.00ft
Vertical Reference Pt	XTREME 8 (RKB)	XTREME 8 (RKB) to Mud Line at Slot (SLOT#16 USA FED 29N-36HZ (767'FSL & 621'FWL, SEC.36))	5041.00ft
MD Reference Pt	XTREME 8 (RKB)	Section Origin	N 0.00, E 0.00 ft
Field Vertical Reference	Mean Sea Level	Section Azimuth	0.23°

Actual Wellpath Report

USA FED 29N-36HZ AWP

Page 2 of 7

REFERENCE WELLPATH IDENTIFICATION			
Operator	KERR-MCGEE OIL & GAS ONSHORE LP	Slot	SLOT#16 USA FED 29N-36HZ (767'FSL & 621'FWL, SEC.36)
Area	COLORADO	Well	USA FED 29N-36HZ
Field	WELD COUNTY (KERR MCGEE)	Wellbore	USA FED 29N-36HZ AWP
Facility	SEC.36-T3N-R66W		

WELLPATH DATA (145 stations) † = interpolated/extrapolated station										
MD [ft]	Inclination [°]	Azimuth [°]	TVD [ft]	Vert Sect [ft]	North [ft]	East [ft]	Latitude	Longitude	DLS [°/100ft]	Comments
0.00†	0.000	46.650	0.00	0.00	0.00	0.00	40°10'36.296"N	104°43'57.972"W	0.00	
17.00	0.000	46.650	17.00	0.00	0.00	0.00	40°10'36.296"N	104°43'57.972"W	0.00	TIE ON
109.00	0.340	46.650	109.00	0.19	0.19	0.20	40°10'36.298"N	104°43'57.969"W	0.37	BEGIN BHI MWD SURVEYS
234.00	0.220	104.900	234.00	0.38	0.38	0.70	40°10'36.300"N	104°43'57.963"W	0.23	
327.00	0.430	77.870	327.00	0.41	0.41	1.21	40°10'36.300"N	104°43'57.956"W	0.27	
419.00	0.380	81.660	418.99	0.53	0.52	1.85	40°10'36.301"N	104°43'57.948"W	0.06	
511.00	0.130	101.800	510.99	0.56	0.55	2.26	40°10'36.301"N	104°43'57.943"W	0.28	
603.00	0.160	130.880	602.99	0.45	0.44	2.46	40°10'36.300"N	104°43'57.940"W	0.09	
695.00	0.040	201.710	694.99	0.34	0.33	2.54	40°10'36.299"N	104°43'57.939"W	0.16	
787.00	0.090	241.380	786.99	0.27	0.26	2.47	40°10'36.299"N	104°43'57.940"W	0.07	
883.00	0.380	251.530	882.99	0.14	0.13	2.10	40°10'36.297"N	104°43'57.945"W	0.30	LAST BHI MWD SURVEY
980.00	0.720	237.480	979.99	-0.30	-0.30	1.28	40°10'36.293"N	104°43'57.956"W	0.37	BEGIN BHI MWD+IFR SURVEYS
1072.00	0.800	241.340	1071.98	-0.92	-0.92	0.23	40°10'36.287"N	104°43'57.969"W	0.10	
1164.00	1.500	143.480	1163.97	-2.20	-2.20	0.38	40°10'36.274"N	104°43'57.967"W	1.95	
1256.00	4.230	142.780	1255.84	-5.86	-5.87	3.15	40°10'36.238"N	104°43'57.931"W	2.97	
1346.00	6.300	158.980	1345.46	-13.09	-13.12	6.93	40°10'36.166"N	104°43'57.883"W	2.81	
1437.00	8.430	161.880	1435.71	-24.08	-24.12	10.80	40°10'36.058"N	104°43'57.833"W	2.38	
1529.00	9.890	169.480	1526.54	-38.24	-38.30	14.34	40°10'35.918"N	104°43'57.787"W	2.06	
1621.00	12.370	160.560	1616.80	-55.29	-55.37	19.06	40°10'35.749"N	104°43'57.726"W	3.27	
1680.00	12.870	150.910	1674.39	-66.97	-67.07	24.36	40°10'35.633"N	104°43'57.658"W	3.67	
1735.00	13.440	136.000	1727.96	-76.89	-77.02	31.78	40°10'35.535"N	104°43'57.563"W	6.24	
1805.00	13.600	128.280	1796.02	-87.80	-87.97	43.89	40°10'35.427"N	104°43'57.407"W	2.59	
1897.00	12.650	127.860	1885.62	-100.61	-100.86	60.34	40°10'35.299"N	104°43'57.195"W	1.04	
1988.00	13.160	131.540	1974.32	-113.54	-113.84	75.96	40°10'35.171"N	104°43'56.993"W	1.06	
2080.00	12.050	129.040	2064.10	-126.47	-126.84	91.26	40°10'35.043"N	104°43'56.796"W	1.34	
2172.00	11.830	131.820	2154.11	-138.75	-139.17	105.74	40°10'34.921"N	104°43'56.610"W	0.67	
2263.00	11.770	134.430	2243.19	-151.41	-151.89	119.32	40°10'34.795"N	104°43'56.435"W	0.59	
2355.00	12.950	140.570	2333.06	-165.89	-166.42	132.57	40°10'34.651"N	104°43'56.264"W	1.92	
2446.00	11.530	137.360	2421.99	-180.41	-180.99	145.21	40°10'34.507"N	104°43'56.101"W	1.73	
2537.00	10.970	134.860	2511.24	-193.15	-193.79	157.51	40°10'34.381"N	104°43'55.943"W	0.82	
2628.00	11.250	144.360	2600.55	-206.43	-207.11	168.82	40°10'34.249"N	104°43'55.797"W	2.03	
2719.00	11.120	143.970	2689.82	-220.70	-221.42	179.15	40°10'34.108"N	104°43'55.664"W	0.17	
2811.00	10.690	149.200	2780.16	-235.17	-235.93	188.74	40°10'33.965"N	104°43'55.541"W	1.17	
2896.00	11.570	153.680	2863.56	-249.55	-250.34	196.56	40°10'33.822"N	104°43'55.440"W	1.45	
2981.00	13.240	149.390	2946.57	-265.53	-266.36	205.29	40°10'33.664"N	104°43'55.327"W	2.24	
3067.00	14.050	144.170	3030.15	-282.43	-283.30	216.42	40°10'33.496"N	104°43'55.184"W	1.71	
3152.00	13.740	143.010	3112.66	-298.81	-299.73	228.53	40°10'33.334"N	104°43'55.028"W	0.49	
3237.00	13.160	145.320	3195.33	-314.78	-315.75	240.11	40°10'33.176"N	104°43'54.879"W	0.93	
3322.00	12.520	136.950	3278.21	-329.42	-330.44	251.91	40°10'33.031"N	104°43'54.727"W	2.31	
3407.00	11.140	136.110	3361.40	-342.03	-343.09	263.89	40°10'32.906"N	104°43'54.572"W	1.64	
3493.00	12.540	134.690	3445.57	-354.53	-355.64	276.29	40°10'32.782"N	104°43'54.413"W	1.66	
3578.00	12.750	134.020	3528.51	-367.48	-368.65	289.59	40°10'32.653"N	104°43'54.241"W	0.30	
3663.00	11.930	137.600	3611.55	-380.44	-381.66	302.26	40°10'32.524"N	104°43'54.078"W	1.32	
3748.00	12.260	140.290	3694.66	-393.82	-395.09	313.95	40°10'32.392"N	104°43'53.927"W	0.77	
3833.00	12.590	138.250	3777.67	-407.63	-408.94	325.89	40°10'32.255"N	104°43'53.774"W	0.65	

REFERENCE WELLPATH IDENTIFICATION			
Operator	KERR-MCGEE OIL & GAS ONSHORE LP	Slot	SLOT#16 USA FED 29N-36HZ (767'FSL & 621'FWL, SEC.36)
Area	COLORADO	Well	USA FED 29N-36HZ
Field	WELD COUNTY (KERR MCGEE)	Wellbore	USA FED 29N-36HZ AWP
Facility	SEC.36-T3N-R66W		

WELLPATH DATA (145 stations)										
MD [ft]	Inclination [°]	Azimuth [°]	TVD [ft]	Vert Sect [ft]	North [ft]	East [ft]	Latitude	Longitude	DLS [°/100ft]	Comments
3918.00	13.250	138.530	3860.52	-421.79	-423.15	338.51	40°10'32.114"N	104°43'53.611"W	0.78	
4003.00	13.500	137.300	3943.21	-436.33	-437.74	351.68	40°10'31.970"N	104°43'53.441"W	0.45	
4088.00	13.940	137.650	4025.79	-451.13	-452.60	365.31	40°10'31.823"N	104°43'53.266"W	0.53	
4173.00	13.750	141.270	4108.32	-466.52	-468.05	378.53	40°10'31.671"N	104°43'53.096"W	1.04	
4259.00	13.930	142.400	4191.82	-482.65	-484.22	391.24	40°10'31.511"N	104°43'52.932"W	0.38	
4344.00	13.540	141.320	4274.39	-498.47	-500.09	403.70	40°10'31.354"N	104°43'52.771"W	0.55	
4429.00	11.960	137.900	4357.30	-512.72	-514.40	415.82	40°10'31.213"N	104°43'52.615"W	2.06	
4515.00	12.330	139.030	4441.37	-526.22	-527.94	427.82	40°10'31.079"N	104°43'52.461"W	0.51	
4599.00	11.650	137.920	4523.54	-539.24	-541.01	439.38	40°10'30.950"N	104°43'52.312"W	0.85	
4685.00	9.910	138.050	4608.02	-551.15	-552.96	450.15	40°10'30.832"N	104°43'52.173"W	2.02	
4770.00	11.600	141.870	4691.52	-563.27	-565.12	460.32	40°10'30.711"N	104°43'52.042"W	2.16	
4855.00	12.950	138.300	4774.58	-577.06	-578.96	471.93	40°10'30.575"N	104°43'51.892"W	1.82	
4940.00	12.670	139.710	4857.46	-591.23	-593.18	484.29	40°10'30.434"N	104°43'51.733"W	0.49	
5025.00	11.530	138.070	4940.57	-604.61	-606.61	496.00	40°10'30.301"N	104°43'51.582"W	1.40	
5110.00	11.410	137.410	5023.88	-617.08	-619.12	507.37	40°10'30.178"N	104°43'51.436"W	0.21	
5196.00	11.270	134.800	5108.20	-629.21	-631.30	519.09	40°10'30.057"N	104°43'51.285"W	0.62	
5281.00	11.930	138.820	5191.46	-641.63	-643.77	530.76	40°10'29.934"N	104°43'51.134"W	1.23	
5366.00	10.980	140.070	5274.77	-654.41	-656.59	541.74	40°10'29.808"N	104°43'50.993"W	1.16	
5451.00	8.990	133.860	5358.48	-665.18	-667.40	551.73	40°10'29.701"N	104°43'50.864"W	2.66	
5536.00	7.190	139.630	5442.63	-673.80	-676.05	559.96	40°10'29.615"N	104°43'50.758"W	2.32	
5621.00	5.980	141.270	5527.07	-681.28	-683.56	566.18	40°10'29.541"N	104°43'50.678"W	1.44	
5706.00	5.090	144.000	5611.67	-687.77	-690.07	571.17	40°10'29.477"N	104°43'50.614"W	1.09	
5792.00	3.910	143.360	5697.40	-693.19	-695.51	575.16	40°10'29.423"N	104°43'50.562"W	1.37	
5877.00	3.380	142.260	5782.23	-697.48	-699.81	578.42	40°10'29.380"N	104°43'50.520"W	0.63	
5962.00	2.540	141.300	5867.12	-700.93	-703.26	581.13	40°10'29.346"N	104°43'50.486"W	0.99	
6048.00	1.980	140.720	5953.05	-703.55	-705.90	583.27	40°10'29.320"N	104°43'50.458"W	0.65	
6133.00	1.800	144.530	6038.00	-705.77	-708.12	584.97	40°10'29.298"N	104°43'50.436"W	0.26	
6218.00	0.870	176.060	6122.98	-707.50	-709.86	585.79	40°10'29.281"N	104°43'50.426"W	1.36	
6303.00	0.220	338.480	6207.98	-707.99	-710.35	585.77	40°10'29.276"N	104°43'50.426"W	1.27	
6559.00	0.220	197.800	6463.98	-708.00	-710.36	585.44	40°10'29.276"N	104°43'50.430"W	0.16	
6729.00	0.250	158.530	6633.98	-708.66	-711.01	585.48	40°10'29.270"N	104°43'50.430"W	0.09	
6772.00	0.110	43.690	6676.98	-708.72	-711.07	585.54	40°10'29.269"N	104°43'50.429"W	0.73	
6815.00	3.420	357.380	6719.95	-707.40	-709.76	585.51	40°10'29.282"N	104°43'50.429"W	7.78	
6858.00	8.710	0.740	6762.69	-702.86	-705.22	585.50	40°10'29.327"N	104°43'50.429"W	12.32	
6900.00	13.130	3.700	6803.92	-694.92	-697.28	585.84	40°10'29.405"N	104°43'50.425"W	10.60	
6943.00	17.780	3.530	6845.36	-683.48	-685.84	586.56	40°10'29.518"N	104°43'50.416"W	10.81	
6985.00	22.400	3.280	6884.79	-669.08	-671.45	587.42	40°10'29.661"N	104°43'50.405"W	11.00	
7028.00	26.040	1.200	6924.00	-651.46	-653.82	588.08	40°10'29.835"N	104°43'50.396"W	8.69	
7071.00	28.440	358.670	6962.23	-631.78	-634.15	588.04	40°10'30.029"N	104°43'50.396"W	6.20	
7113.00	31.910	356.260	6998.54	-610.70	-613.06	587.09	40°10'30.238"N	104°43'50.409"W	8.75	
7156.00	36.580	355.850	7034.07	-586.58	-588.93	585.42	40°10'30.476"N	104°43'50.430"W	10.87	
7198.00	40.240	354.500	7066.98	-560.59	-562.94	583.21	40°10'30.733"N	104°43'50.459"W	8.94	
7241.00	43.620	355.900	7098.96	-531.97	-534.31	580.82	40°10'31.016"N	104°43'50.490"W	8.16	
7284.00	46.560	358.140	7129.32	-501.57	-503.90	579.25	40°10'31.316"N	104°43'50.510"W	7.77	
7326.00	50.540	359.780	7157.12	-470.11	-472.44	578.69	40°10'31.627"N	104°43'50.517"W	9.92	

Actual Wellpath Report

USA FED 29N-36HZ AWP

Page 4 of 7

REFERENCE WELLPATH IDENTIFICATION			
Operator	KERR-MCGEE OIL & GAS ONSHORE LP	Slot	SLOT#16 USA FED 29N-36HZ (767'FSL & 621'FWL, SEC.36)
Area	COLORADO	Well	USA FED 29N-36HZ
Field	WELD COUNTY (KERR MCGEE)	Wellbore	USA FED 29N-36HZ AWP
Facility	SEC.36-T3N-R66W		

WELLPATH DATA (145 stations) † = interpolated/extrapolated station										
MD [ft]	Inclination [°]	Azimuth [°]	TVD [ft]	Vert Sect [ft]	North [ft]	East [ft]	Latitude	Longitude	DLS [°/100ft]	Comments
7369.00	55.450	359.950	7182.99	-435.78	-438.11	578.61	40°10'31.967"N	104°43'50.518"W	11.42	
7411.00	60.670	359.800	7205.20	-400.15	-402.48	578.54	40°10'32.319"N	104°43'50.519"W	12.43	
7454.00	64.460	359.880	7225.01	-362.00	-364.32	578.43	40°10'32.696"N	104°43'50.520"W	8.82	
7497.00	67.480	359.410	7242.52	-322.73	-325.05	578.18	40°10'33.084"N	104°43'50.523"W	7.09	
7539.00	71.100	359.940	7257.37	-283.45	-285.78	577.96	40°10'33.472"N	104°43'50.526"W	8.70	
7582.00	74.110	0.370	7270.22	-242.42	-244.75	578.08	40°10'33.877"N	104°43'50.525"W	7.06	
7625.00	76.880	0.500	7280.99	-200.80	-203.12	578.39	40°10'34.289"N	104°43'50.521"W	6.45	
7667.00	81.110	1.000	7289.01	-159.58	-161.91	578.93	40°10'34.696"N	104°43'50.514"W	10.14	
7710.00	84.070	1.090	7294.55	-116.95	-119.28	579.71	40°10'35.117"N	104°43'50.504"W	6.89	
7728.00	85.580	1.710	7296.18	-99.03	-101.36	580.15	40°10'35.294"N	104°43'50.498"W	9.06	
7764.00†	87.312	1.401	7298.41	-63.11	-65.44	581.12	40°10'35.649"N	104°43'50.485"W	4.89	7" CASING POINT
7818.00	89.910	0.940	7299.72	-9.14	-11.47	582.23	40°10'36.183"N	104°43'50.471"W	4.89	
7946.00	91.200	2.060	7298.48	118.82	116.47	585.58	40°10'37.447"N	104°43'50.428"W	1.33	
8031.00	91.230	1.070	7296.67	203.78	201.42	587.90	40°10'38.286"N	104°43'50.398"W	1.16	
8116.00	90.860	0.340	7295.12	288.76	286.40	588.94	40°10'39.126"N	104°43'50.385"W	0.96	
8202.00	89.910	359.240	7294.55	374.75	372.39	588.63	40°10'39.976"N	104°43'50.389"W	1.69	
8287.00	90.340	359.680	7294.36	459.74	457.39	587.83	40°10'40.816"N	104°43'50.399"W	0.72	
8372.00	88.980	0.100	7294.87	544.74	542.38	587.66	40°10'41.656"N	104°43'50.401"W	1.67	
8457.00	90.650	0.320	7295.14	629.74	627.38	587.98	40°10'42.496"N	104°43'50.397"W	1.98	
8543.00	89.350	359.730	7295.14	715.73	713.38	588.01	40°10'43.346"N	104°43'50.396"W	1.66	
8628.00	90.120	0.180	7295.53	800.73	798.38	587.95	40°10'44.186"N	104°43'50.397"W	1.05	
8714.00	89.630	0.520	7295.72	886.73	884.37	588.47	40°10'45.035"N	104°43'50.390"W	0.69	
8799.00	89.410	0.920	7296.43	971.72	969.36	589.54	40°10'45.875"N	104°43'50.377"W	0.54	
8884.00	89.170	359.890	7297.49	1056.72	1054.35	590.14	40°10'46.715"N	104°43'50.369"W	1.24	
8970.00	90.520	0.560	7297.72	1142.71	1140.35	590.48	40°10'47.565"N	104°43'50.365"W	1.75	
9055.00	90.150	0.790	7297.22	1227.71	1225.34	591.48	40°10'48.405"N	104°43'50.352"W	0.51	
9141.00	89.350	0.220	7297.60	1313.71	1311.34	592.24	40°10'49.255"N	104°43'50.342"W	1.14	
9226.00	89.630	359.250	7298.35	1398.70	1396.33	591.84	40°10'50.095"N	104°43'50.347"W	1.19	
9311.00	88.210	358.300	7299.96	1483.65	1481.30	590.03	40°10'50.934"N	104°43'50.370"W	2.01	
9396.00	89.750	359.010	7301.47	1568.60	1566.26	588.03	40°10'51.774"N	104°43'50.396"W	1.99	
9481.00	91.050	359.170	7300.88	1653.58	1651.24	586.68	40°10'52.614"N	104°43'50.413"W	1.54	
9566.00	90.800	0.030	7299.50	1738.57	1736.23	586.09	40°10'53.453"N	104°43'50.421"W	1.05	
9651.00	90.000	0.870	7298.91	1823.56	1821.22	586.76	40°10'54.293"N	104°43'50.412"W	1.36	
9736.00	90.580	0.690	7298.48	1908.56	1906.21	587.91	40°10'55.133"N	104°43'50.397"W	0.71	
9822.00	89.970	1.440	7298.07	1994.55	1992.19	589.51	40°10'55.983"N	104°43'50.377"W	1.12	
9907.00	89.570	1.460	7298.41	2079.52	2077.17	591.66	40°10'56.823"N	104°43'50.349"W	0.47	
9991.00	89.570	1.100	7299.04	2163.51	2161.14	593.54	40°10'57.652"N	104°43'50.325"W	0.43	
10161.00	90.490	0.230	7298.95	2333.50	2331.13	595.51	40°10'59.332"N	104°43'50.299"W	0.74	
10247.00	90.000	0.730	7298.58	2419.50	2417.12	596.23	40°11'00.182"N	104°43'50.290"W	0.81	
10417.00	90.060	0.370	7298.49	2589.49	2587.12	597.87	40°11'01.862"N	104°43'50.269"W	0.21	
10502.00	89.780	0.600	7298.61	2674.49	2672.11	598.59	40°11'02.702"N	104°43'50.260"W	0.43	
10587.00	89.720	359.700	7298.98	2759.49	2757.11	598.81	40°11'03.542"N	104°43'50.257"W	1.06	
10673.00	89.880	0.340	7299.28	2845.49	2843.11	598.84	40°11'04.392"N	104°43'50.256"W	0.77	
10843.00	90.060	359.830	7299.37	3015.49	3013.11	599.09	40°11'06.072"N	104°43'50.253"W	0.32	
10929.00	90.150	359.660	7299.21	3101.49	3099.11	598.71	40°11'06.921"N	104°43'50.258"W	0.22	

REFERENCE WELLPATH IDENTIFICATION

Operator	KERR-MCGEE OIL & GAS ONSHORE LP	Slot	SLOT#16 USA FED 29N-36HZ (767'FSL & 621'FWL, SEC.36)
Area	COLORADO	Well	USA FED 29N-36HZ
Field	WELD COUNTY (KERR MCGEE)	Wellbore	USA FED 29N-36HZ AWP
Facility	SEC.36-T3N-R66W		

WELLPATH DATA (145 stations)

MD [ft]	Inclination [°]	Azimuth [°]	TVD [ft]	Vert Sect [ft]	North [ft]	East [ft]	Latitude	Longitude	DLS [°/100ft]	Comments
11014.00	89.820	0.410	7299.24	3186.48	3184.11	598.76	40°11'07.761"N	104°43'50.257"W	0.96	
11099.00	89.910	0.250	7299.44	3271.48	3269.11	599.25	40°11'08.601"N	104°43'50.251"W	0.22	
11184.00	89.290	0.980	7300.03	3356.48	3354.10	600.16	40°11'09.441"N	104°43'50.239"W	1.13	
11269.00	89.230	0.950	7301.13	3441.47	3439.08	601.59	40°11'10.281"N	104°43'50.221"W	0.08	
11355.00	88.950	0.720	7302.49	3527.45	3525.06	602.85	40°11'11.131"N	104°43'50.204"W	0.42	
11440.00	89.510	0.820	7303.64	3612.44	3610.04	603.99	40°11'11.970"N	104°43'50.190"W	0.67	
11525.00	90.060	359.560	7303.95	3697.43	3695.04	604.27	40°11'12.810"N	104°43'50.186"W	1.62	
11610.00	89.750	359.210	7304.10	3782.43	3780.03	603.36	40°11'13.650"N	104°43'50.198"W	0.55	
11766.00	89.910	359.170	7304.56	3938.40	3936.02	601.15	40°11'15.192"N	104°43'50.226"W	0.11	LAST BHI MWD+IFR SURVEY
11826.00	89.910	359.170	7304.65	3998.39	3996.01	600.28	40°11'15.785"N	104°43'50.237"W	0.00	PROJECTION TO BIT

HOLE & CASING SECTIONS - Ref Wellbore: USA FED 29N-36HZ AWP Ref Wellpath: USA FED 29N-36HZ AWP

String/Diameter	Start MD [ft]	End MD [ft]	Interval [ft]	Start TVD [ft]	End TVD [ft]	Start N/S [ft]	Start E/W [ft]	End N/S [ft]	End E/W [ft]
13.5in Open Hole	17.00	898.00	881.00	17.00	897.99	0.00	0.00	0.09	2.00
9.625in Casing Surface	17.00	898.00	881.00	17.00	897.99	0.00	0.00	0.09	2.00
8.75in Open Hole	898.00	7775.00	6877.00	897.99	7298.87	0.09	2.00	-54.46	581.38
7in Casing Intermediate	17.00	7764.00	7747.00	17.00	7298.41	0.00	0.00	-65.44	581.12
6.125in Open Hole	7775.00	11826.00	4051.00	7298.87	7304.65	-54.46	581.38	3996.01	600.28

REFERENCE WELLPATH IDENTIFICATION			
Operator	KERR-MCGEE OIL & GAS ONSHORE LP	Slot	SLOT#16 USA FED 29N-36HZ (767'FSL & 621'FWL, SEC.36)
Area	COLORADO	Well	USA FED 29N-36HZ
Field	WELD COUNTY (KERR MCGEE)	Wellbore	USA FED 29N-36HZ AWP
Facility	SEC.36-T3N-R66W		

TARGETS									
Name	MD [ft]	TVD [ft]	North [ft]	East [ft]	Grid East [US ft]	Grid North [US ft]	Latitude	Longitude	Shape
USA FED 13-36HZ PAD SECTION LINES		0.00	-0.30	-60.08	3214322.42	1308159.11	40°10'36.293"N	104°43'58.746"W	polygon
USA FED 29N-36HZ BHL ON PLAT (460'FNL & 1110'FWL, SEC.36) REV-1		7279.00	4021.55	506.01	3214853.67	1312185.53	40°11'16.037"N	104°43'51.452"W	point
USA FED 29-36HZ LANDBOX		7301.00	0.00	0.00	3214382.49	1308159.93	40°10'36.296"N	104°43'57.972"W	polygon
USA FED 29N-36HZ BHL (460'FNL & 1205'FWL, SEC.36) REV-3		7301.00	4021.55	601.01	3214948.66	1312186.36	40°11'16.037"N	104°43'50.228"W	point
USA FED 29N-36HZ BHL ON PLAT (460'FNL & 1110'FWL, SEC.36) REV-2		7301.00	4021.55	506.01	3214853.67	1312185.53	40°11'16.037"N	104°43'51.452"W	point
USA FED 13-36HZ PAD HARDLINES (460' SETBACKS)		7440.00	-0.30	-60.08	3214322.42	1308159.11	40°10'36.293"N	104°43'58.746"W	polygon

WELLPATH COMPOSITION - Ref Wellbore: USA FED 29N-36HZ AWP Ref Wellpath: USA FED 29N-36HZ AWP				
Start MD [ft]	End MD [ft]	Positional Uncertainty Model	Log Name/Comment	Wellbore
17.00	883.00	NaviTrak (MAGCORR,IFR)	BHI MWD+IFR SURVEYS 13 1/2" HOLE <109-883>	USA FED 29N-36HZ AWP
883.00	7728.00	NaviTrak (MAGCORR,IFR)	BHI MWD+IFR SURVEYS 8 3/4" HOLE <980-7728>	USA FED 29N-36HZ AWP
7728.00	11766.00	NaviTrak (MAGCORR,IFR)	BHI MWD+IFR SURVEYS 6 1/8" HOLE <7818-11766>	USA FED 29N-36HZ AWP
11766.00	11826.00	Blind Drilling (std)	Projection to bit	USA FED 29N-36HZ AWP



Actual Wellpath Report

USA FED 29N-36HZ AWP

Page 7 of 7



REFERENCE WELLPATH IDENTIFICATION

Operator	KERR-MCGEE OIL & GAS ONSHORE LP	Slot	SLOT#16 USA FED 29N-36HZ (767'FSL & 621'FWL, SEC.36)
Area	COLORADO	Well	USA FED 29N-36HZ
Field	WELD COUNTY (KERR MCGEE)	Wellbore	USA FED 29N-36HZ AWP
Facility	SEC.36-T3N-R66W		

WELLPATH COMMENTS

MD [ft]	Inclination [°]	Azimuth [°]	TVD [ft]	Comment
17.00	0.000	46.650	17.00	TIE ON
109.00	0.340	46.650	109.00	BEGIN BHI MWD SURVEYS
883.00	0.380	251.530	882.99	LAST BHI MWD SURVEY
980.00	0.720	237.480	979.99	BEGIN BHI MWD+IFR SURVEYS
7764.00	87.312	1.401	7298.41	7" CASING POINT
11766.00	89.910	359.170	7304.56	LAST BHI MWD+IFR SURVEY
11826.00	89.910	359.170	7304.65	PROJECTION TO BIT