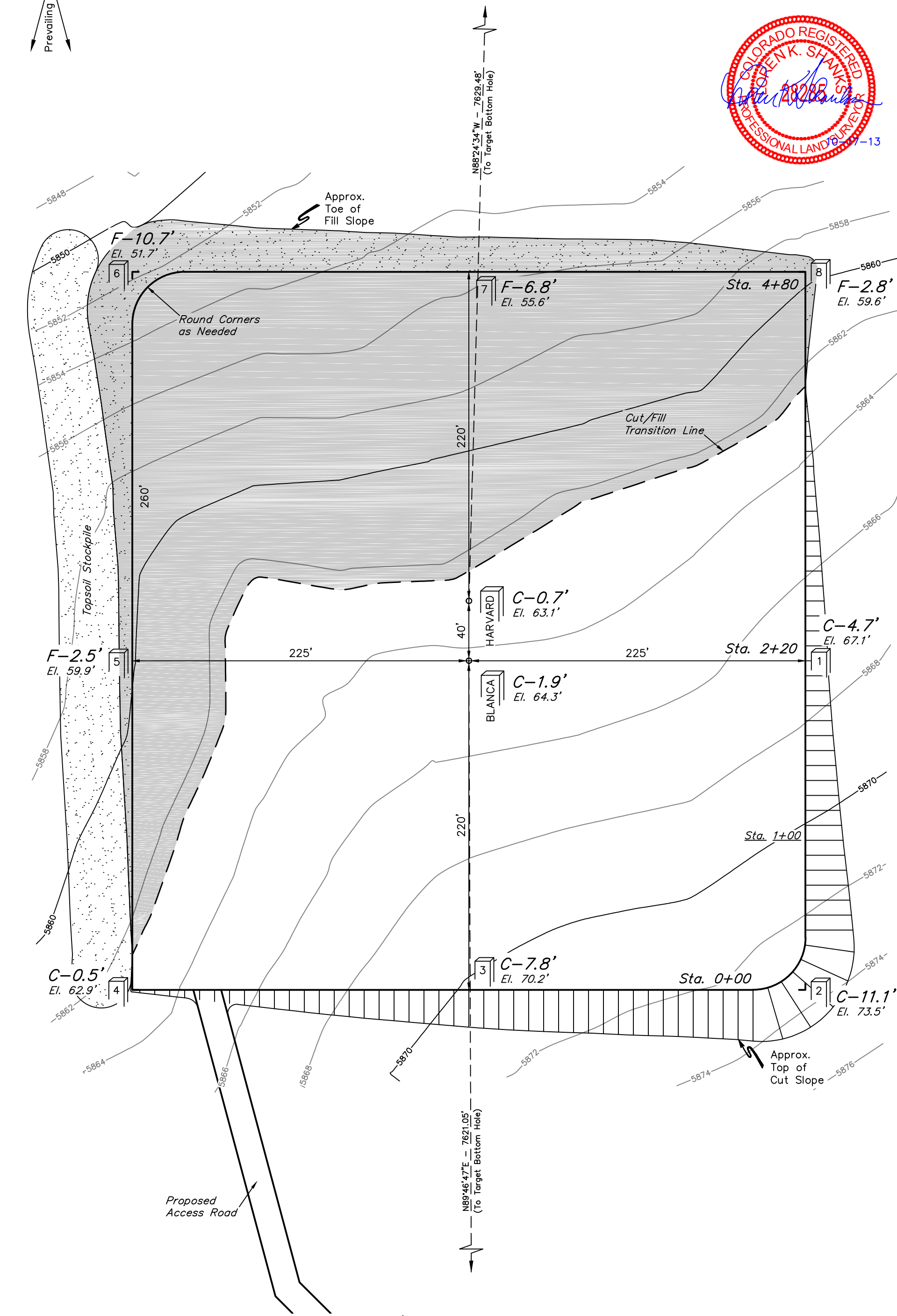


ConocoPhillips Company  
CONSTRUCTION LAYOUT FOR  
STATE BLANCA-1H & STATE HARVARD-1H  
SECTION 12, T5S, R65W, 6th P.M.  
NW 1/4 NE 1/4

FIGURE #1

SCALE: 1" = 60'  
DATE: 09-13-13  
DRAWN BY: A.D.  
REV: 10-17-13



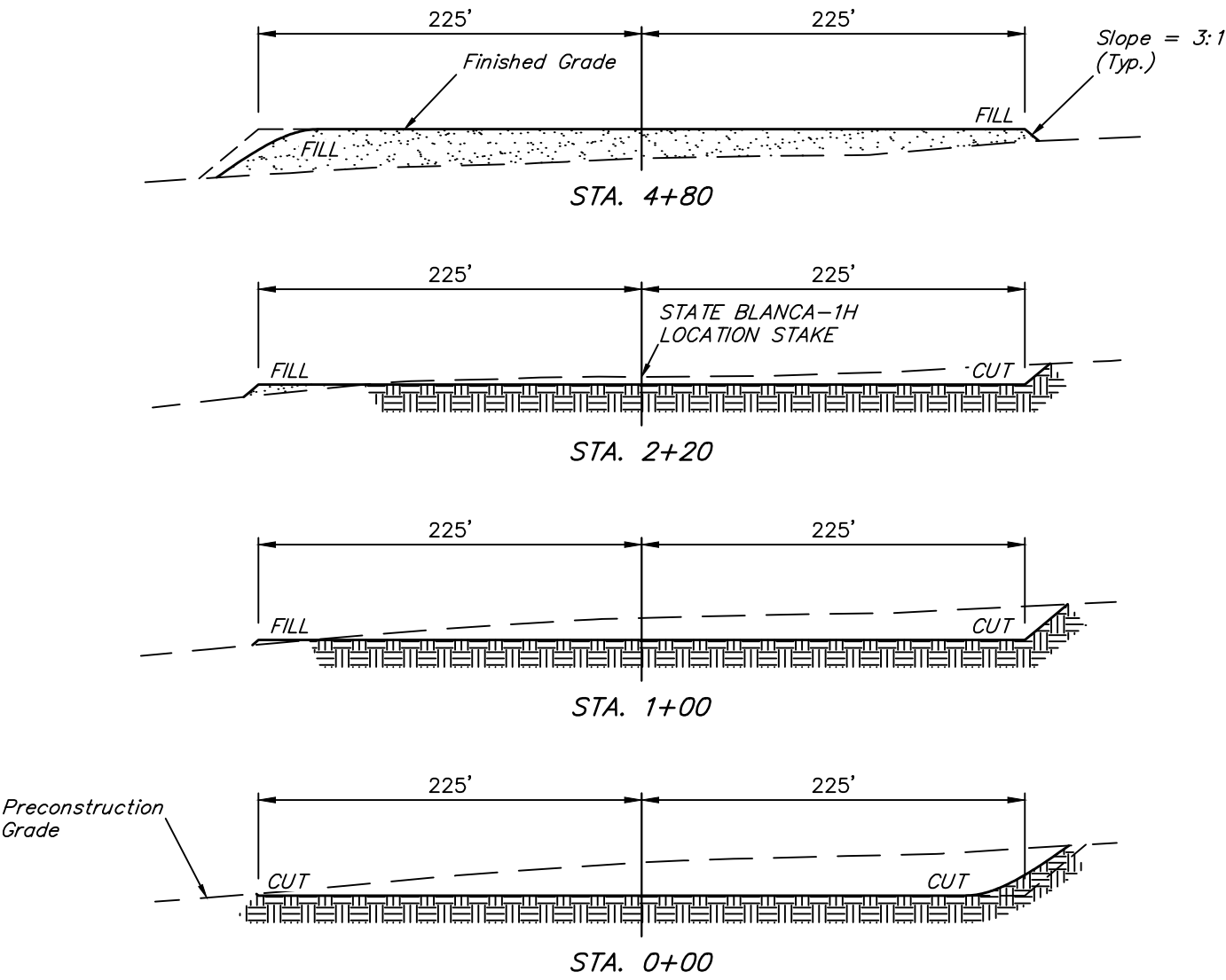
Elev. Ungraded Ground At STATE BLANCA-1H Loc. Stake = 5864.3'  
FINISHED GRADE ELEV. AT STATE BLANCA-1H LOC. STAKE = 5862.4'

UINTAH ENGINEERING & LAND SURVEYING  
85 So. 200 East \* Vernal, Utah 84078 \* (435) 789-1017

1" = 40'  
X-Section  
Scale  
1" = 100'  
DATE: 09-13-13  
DRAWN BY: A.D.

ConocoPhillips Company  
CONSTRUCTION LAYOUT CROSS SECTIONS FOR  
STATE BLANCA-1H & STATE HARVARD-1H  
SECTION 12, T5S, R65W, 6th P.M.  
NW 1/4 NE 1/4

FIGURE #2



NOTE:  
Topsoil should not be  
Stripped Below Finished  
Grade on Substructure Area.

\* NOTE:  
FILL QUANTITY INCLUDES  
5% FOR COMPACTION

APPROXIMATE YARDAGES

(6") Topsoil Stripping	=	4,640 Cu. Yds.
Remaining Location	=	17,110 Cu. Yds.
TOTAL CUT	=	21,750 CU. YDS.
FILL	=	17,110 CU. YDS.

EXCESS MATERIAL	=	4,640 Cu. Yds.
Topsoil	=	4,640 Cu. Yds.
EXCESS UNBALANCE (After Interim Rehabilitation)	=	0 Cu. Yds.

APPROXIMATE ACREAGE

WELL SITE DISTURBANCE	= ± 6.215 ACRES
ACCESS ROAD DISTURBANCE	= ± 0.829 ACRES
TOTAL	= ± 7.044 ACRES