

WELL LOCATION PLAT T5S, R65W, 6th P.M.

ConocoPhillips Company

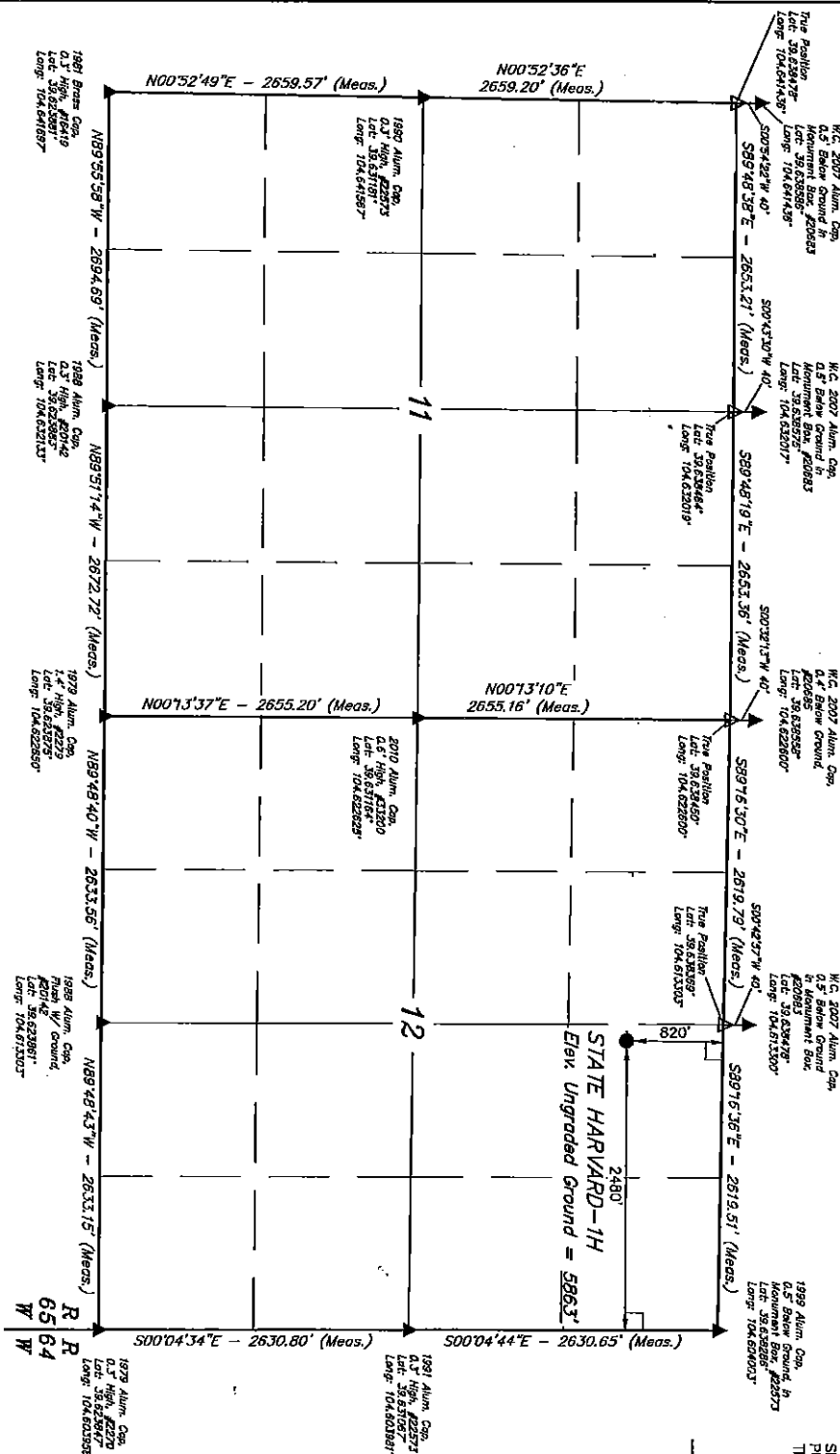
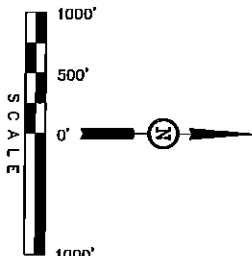
Well location, STATE HARVARD-1H, located as shown in the NW 1/4 NE 1/4 of Section 12, T5S, R65W, 6th P.M., Archapohoe County, Colorado.

BASIS OF ELEVATION

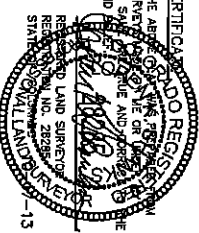
BENCHMARK 374 LOCATED ON THE SECTION LINE BETWEEN SECTIONS 12 & 13, T5S, R64W, 5th P.M., TAKEN FROM 1988 PUBLISHED DATUM BY THE UNITED STATES DEPARTMENT OF THE INTERIOR, GEOLOGICAL SURVEY AS BEING 5054.61 FEET.

BASIS OF BEARINGS

BASIS OF BEARINGS IS A G.P.S. OBSERVATION.



REVISED: 10-17-13



THIS IS TO CERTIFY THAT THE ABOVE IS A TRUE AND CORRECT COPY OF THE ORIGINAL SURVEY RECORDS AND THAT THE SAME HAVE BEEN EXAMINED AND FOUND TO BE THE BEST OF MY KNOWLEDGE AND BELIEF.

UTAH ENGINEERING & LAND SURVEYING
86 SOUTH 200 EAST - VERNAL, UTAH 84078
(435) 789-1017

SCALE	DATE SURVEYED	DATE DRAWN
1" = 1000'	09-09-13	09-13-13
PARTY	REFERENCES	
J.H. C.M. A.D.	G.L.O. PLAT	
WEATHER	FILE	
HOT	ConocoPhillips Company	

- LEGEND:
- = 90° SYMBOL
 - = PROPOSED WELL HEAD.
 - ▲ = SECTION CORNERS LOCATED.
 - △ = SECTION CORNERS RE-ESTABLISHED. (Not Set on Ground.)

SECTION BREAKDOWN T5S, R65W, 6th P.M.

ConocoPhillips Company

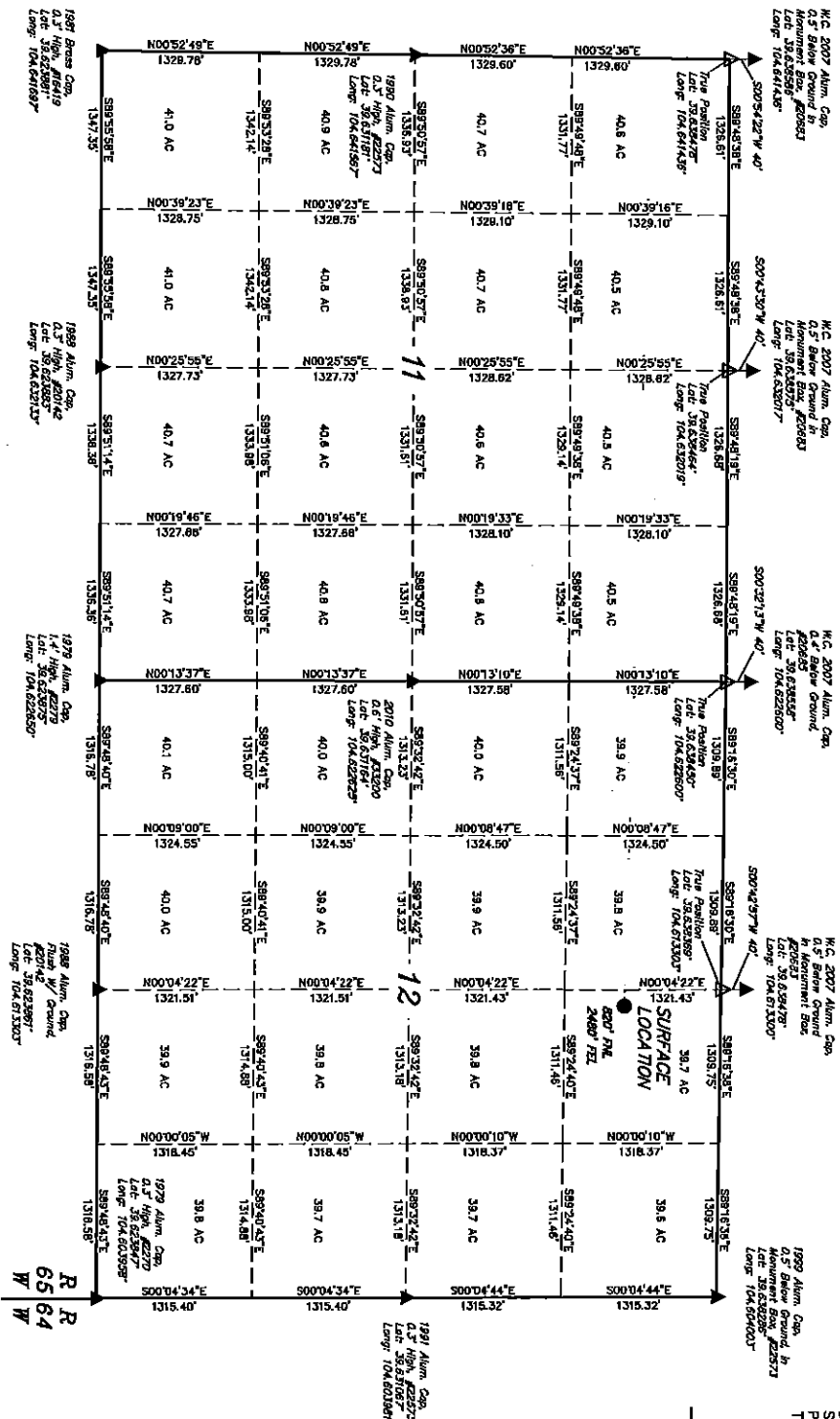
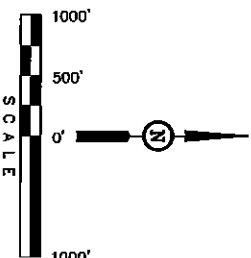
Well location, STATE HARVARD-1H, located as shown in the NW 1/4 NE 1/4 of Section 12, T5S, R65W, 6th P.M., Arapahoe County, Colorado.

BASIS OF ELEVATION

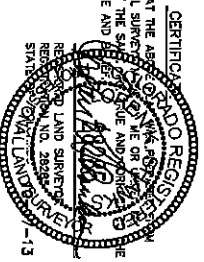
BENCHMARK 374 LOCATED ON THE SECTION LINE BETWEEN SECTIONS 12 & 13, T5S, R64W, 8th P.M. TAKEN FROM 1988 PUBLISHED DATUM BY THE UNITED STATES DEPARTMENT OF THE INTERIOR, GEOLOGICAL SURVEY AS BEING 6084.61 FEET.

BASIS OF BEARINGS

BASIS OF BEARINGS IS A G.P.S. OBSERVATION.



REVISED: 10-17-13



UTAH ENGINEERING & LAND SURVEYING
85 SOUTH 200 EAST - VERNAL, UTAH 84078
(435) 788-1017

LEGEND:

- = 90° SYMBOL
- = PROPOSED WELL HEAD.
- ▲ = SECTION CORNERS LOCATED.
- △ = SECTION CORNERS RE-ESTABLISHED. (Not Set on Ground.)

SCALE
1" = 1000'

PDOP = 1.4

DATE SURVEYED:	DATE DRAWN:
09-09-13	09-13-13

PARTY
J.H. C.M. A.D.

REFERENCES
G.L.O. PLAT

FILE
ConocoPhillips Company

THIS IS TO CERTIFY THAT THE ABOVE DESCRIBED SURVEY WAS MADE BY ME OR UNDER MY CLOSE PERSONAL SUPERVISION AND THAT THE SAME IS ACCORDING TO THE BEST OF MY KNOWLEDGE AND BELIEF IN ACCORDANCE WITH THE REQUIREMENTS OF THE STATUTES OF THE STATE OF UTAH.

CERTIFICATE OF RECORDING
RECORDED IN BOOK NO. 2309
PAGE 104.600000
STATE OF COLORADO
10-13