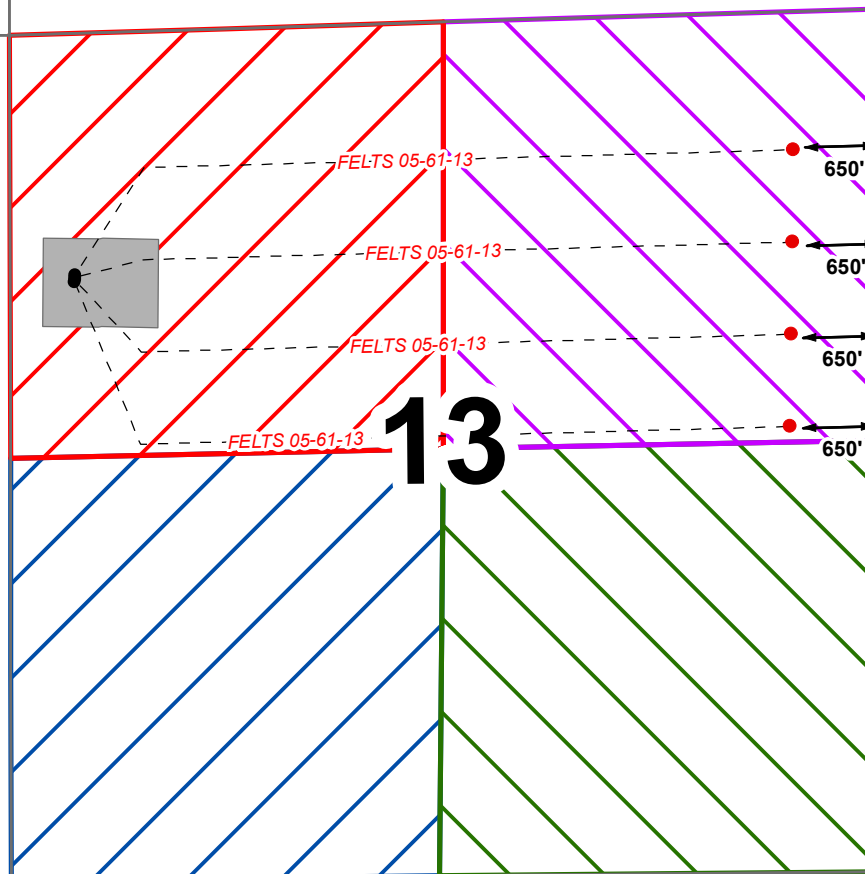


# 14

# 13

# 18



## Bill Barrett Corporation Lease Boundary Map

Felts 5-61-13 Pad  
NW, Section 13, T5N R61W  
Weld County, Colorado

### Legend

- Surface Hole Locations
- Bottom Hole Locations
- Directional Lines
- PAD
- Lessor**
- JEANNIE HORNER MUELLER TST (ETAL-1)
- NANCY A OREM POWELL (ETAL-22)
- RUFUS HENRY FELTS (ETAL-2)
- THOMAS MCDOWELL WILSON (ETAL-2)

### Lease Boundaries

JEANNIE HORNER MUELLER TST (ETAL-1)  
T.5N., R.61W. 6th P.M  
Sec 13; SW  
Sec 14; SE  
320.00 Acres

NANCY A OREM POWELL (ETAL-22)  
T.5N, R.61W. 6th P.M  
Sec 13; SE  
160.00 Acres

RUFUS HENRY FELTS (ETAL-2)  
T.5N, R.61W. 6th P.M  
Sec 13; NW  
160.00 Acres

THOMAS MCDOWELL WILSON (ETAL-2)  
T.5N, R.61W. 6th P.M  
Sec 13; NE  
160 Acres



0 500 1,000  
Feet